



2 & 3 BHK LIFESTYLE LIVING

IT'S YOUR LIFE  
LIVE IT FREELY





IT'S TIME TO ENJOY  
**REAL FREEDOM**

Cities are bound to take our freedom away from us, but if you are still yearning for it, here is a chance to reclaim your freedom!

V.N Skyline, a 2 and 3 bhk project offering lifestyle living, is designed to give you a chance to live the way you want. Though it is perched within the city, it offers unmatched relaxation.





**A reflection of real estate excellence**

V.N Skyline is a project being developed by renowned real estate group V.N Developer. With an array of successful projects to its credit, the group has earned accolades for its quality and trustworthiness.

Set in one of the most promising and happening areas of the city, V.N Skyline is all set to redefine the standards of luxurious living.

an icon of pure,  
Pleasant living experiences





24hr SECURITY WITH CCTV



24 HOURS WATER SUPPLY



2 LIFTS IN EACH BLOCK



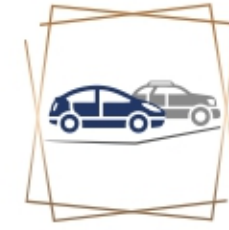
LANDSCAPE GARDEN



CHILDREN PLAY AREA



GAZEBO SITTING



CAR PARKING

CLOSE TO NATURE,  
YET WELL WITHIN THE CITY







2 & 3 BHK LIFESTYLE LIVING

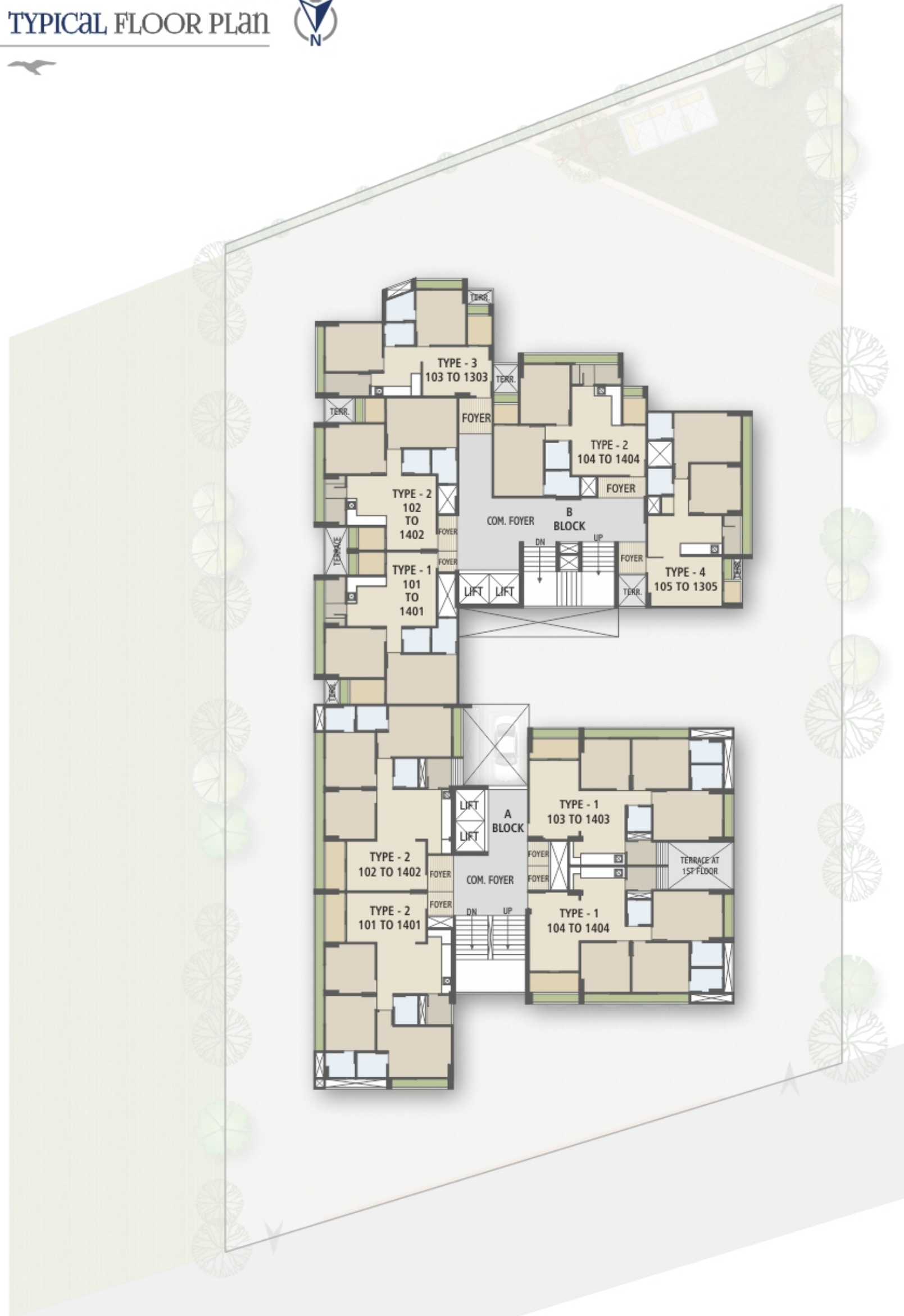
# GROUND FLOOR PLAN







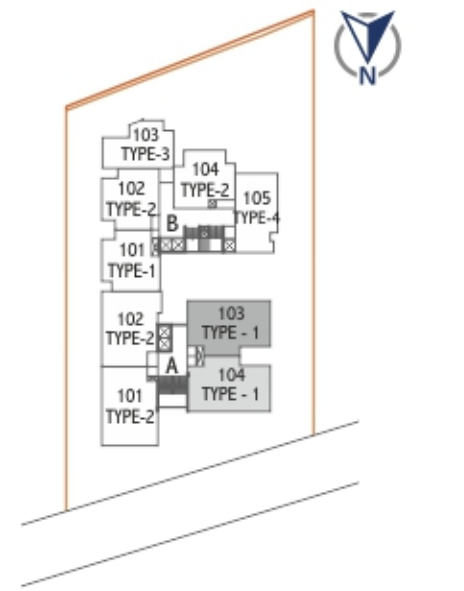
# TYPICAL FLOOR PLAN



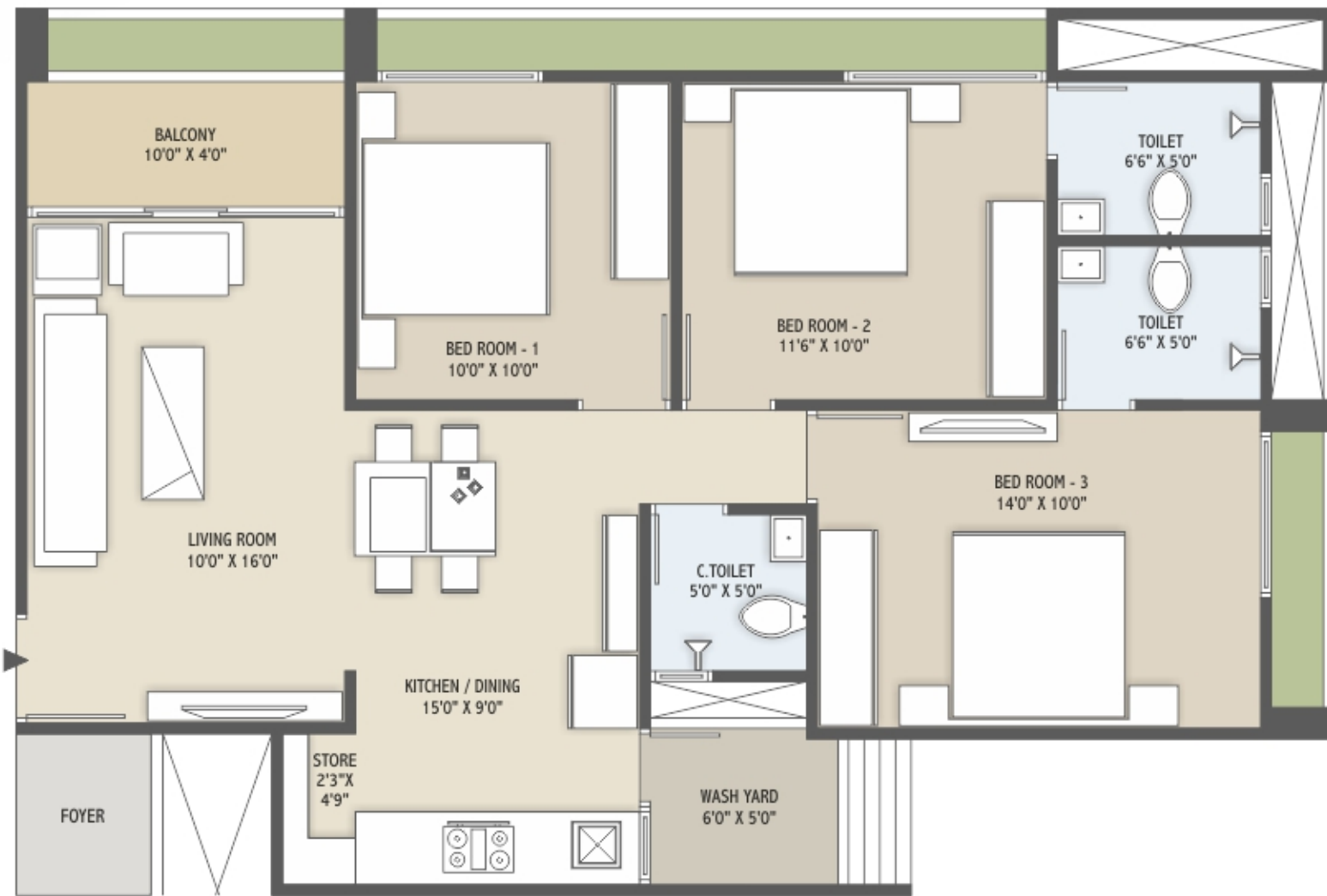
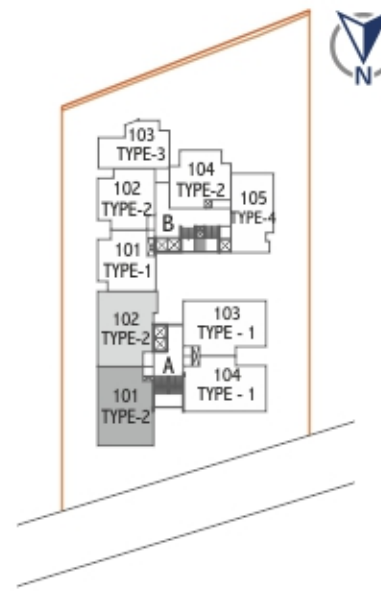




BLOCK - A | TYPE - 1

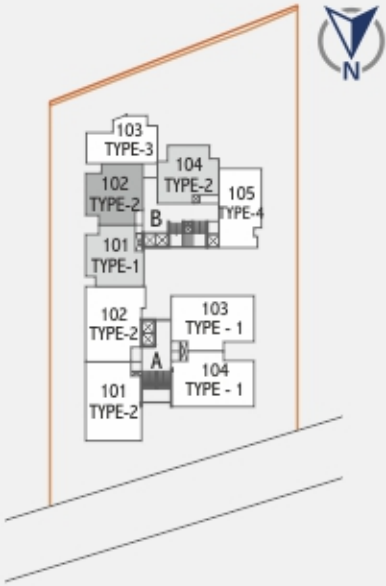


BLOCK - A | TYPE - 2

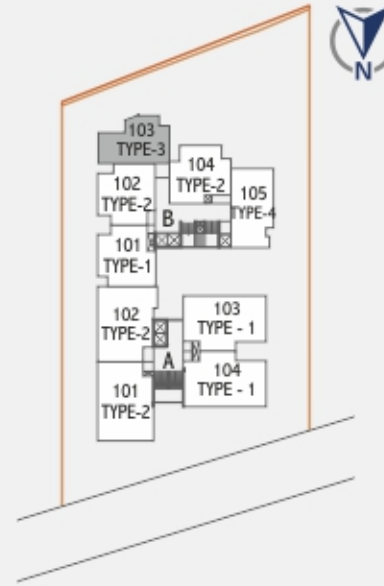




BLOCK - B | TYPE - 2

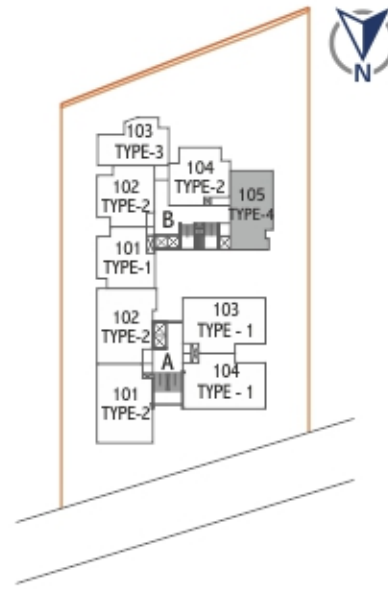


BLOCK - B | TYPE - 3





BLOCK - B | TYPE - 4



SET YOUR GOALS HIGHER  
AND START FLYING!





## SPECIFICATIONS



### Structure

Earthquake resistant R.C.C. frame structure.



### Flooring

Unique premium quality 2'X2' vitrified tiles in Entire apartment. China mosaic for heat reflection in terrace. Rustic tiles in balcony & wash.



### Kitchen

Granite top platform with S.S. Sink & Glazed tiles dado up to lintel level.



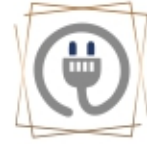
### Doors & Windows

Decorative main door. All other doors are flush door with wooden frame & good quality fittings. Powder coated aluminium sliding window with marble stone seal.



### Wall Finish

Internal single coat mala plaster with putty finish. External Texture Paint as per elevation detail with double coat sand face plaster and good quality acrylic paint.



### Electrification

Concealed copper wiring with Modular Switches & sufficient number of points with MCB distribution panel. AC & Geyser points.



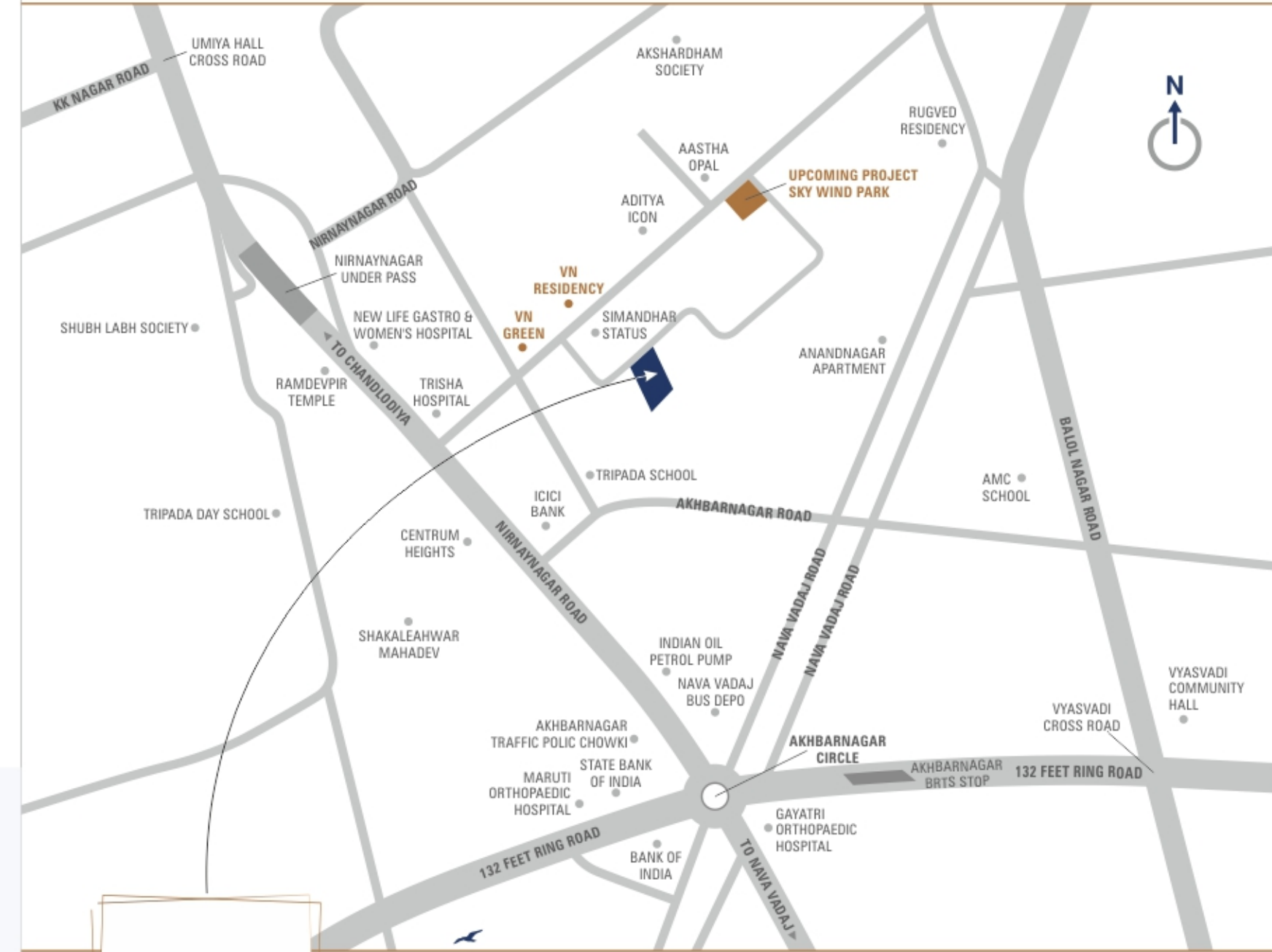
### Security

Whole Scheme monitors under the CCTV Surveillance System.



### Toilet & Plumbing

Designer glazed tiles up to lintel level. Jaquar or equivalent bath fittings & Branded sanitary fittings.



2 & 3 BHK LIFESTYLE LIVING

Scan For Location



B/h. Simandhar Status,  
Nr. Trisha Hospital, Akharnagar Circle  
Nava Vadaj, Ahmedabad.

Scan For Brochure



RERA No.: PR/GJ/AHMEDABAD/AHMEDABAD CITY/AUDA/00000000/000000

Website: [www.gujrera.gujarat.gov.in](http://www.gujrera.gujarat.gov.in)

### Special Notes:

- Expenses like legal charges, stamp duty, Registration, AMC, Torrent Power, Drainage Charge, GST Charges, Narmada Facility charge shall be borne by the member.
- Any additional liabilities due to the change in the Laws, Stamp duty, Govt. Laws, shall be borne by member.
- Maintenance Deposit shall be paid separately by all members.
- Extra work & Internal changes shall be done with prior permission subject to Architect & Structural Designer's approval and shall be charged extra in advance.
- Any changes in the external elevation shall not be permitted.
- All right reserved by the developer for alteration / modification/ improvement in specifications and changes in dimensions, planning and elevation shall binding to all.
- Any member who so ever fails to pay the regular installments is liable to loose the membership and no explanation shall be entertained there after.
- Details & dimensions in brochure are indicative & for the tentative representation only. Dimensions in Brochure are structural dimensions without finishes. Actual dimension may reduces after finishing work like plaster, paint & tiling.
- This brochure is not a legal document. It is only for easy display of the project.
- Possession of the unit shall be given only after receiving BU permission from AMC & full payment from member.
- Subject to Ahmedabad Jurisdiction.

HERE IS A HOME THAT HELPS YOU  
ENJOY LIFE FULLY





DEVELOPER  
  
SKYLINE LLP

Call: 70433 74664  
vninfraspacellp839@gmail.com

ARCHITECT  
**S.MEVADA**  
ARCHITECTS  
Ahmedabad

STRUCTURE  
**VIJAY A. MEHTA**  
Ahmedabad

MEP CONSULTANT  
  
**Pushpnanan**  
Consultancy  
Ahmedabad