

Prideful Homes, Limitless Possibilities...

अतुल्य Pride

DEVELOPER

ATULYA DEVELOPERS

Site Address: Atulya Pride

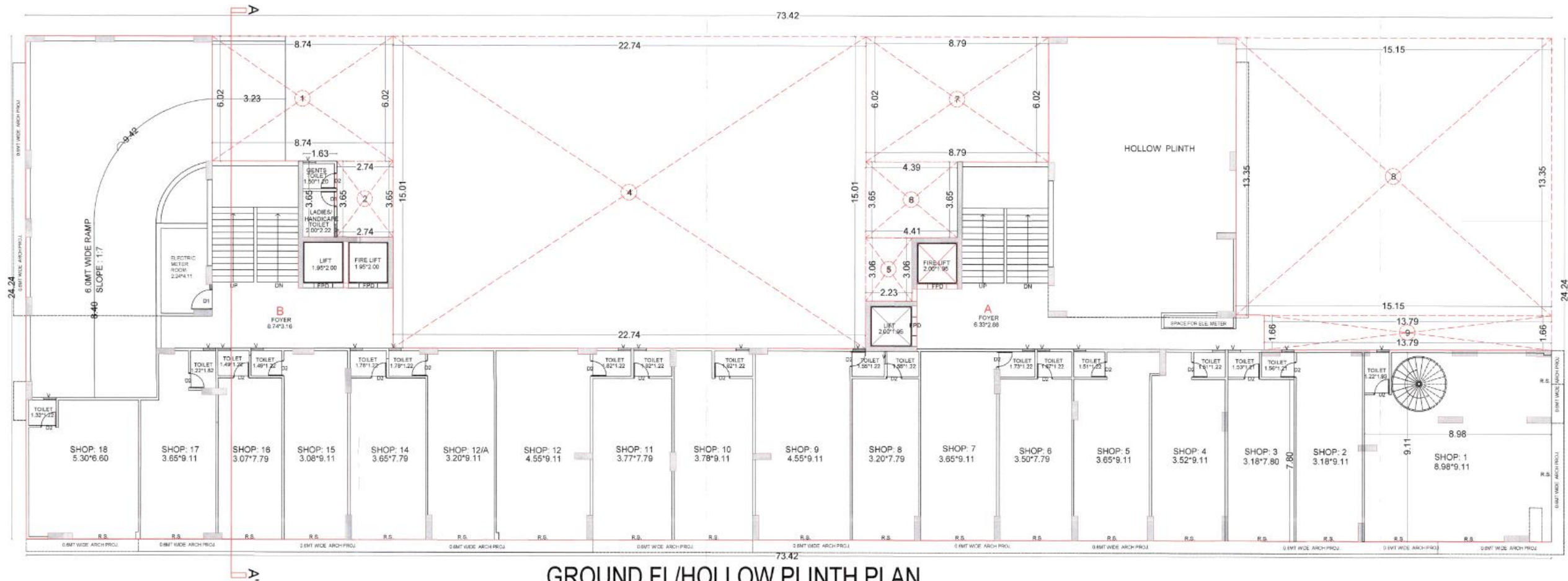
Opp. Sahajanad Sky, Near SBI, Vavol, Gandhinagar.

For More Information: 86 86 02 02 89

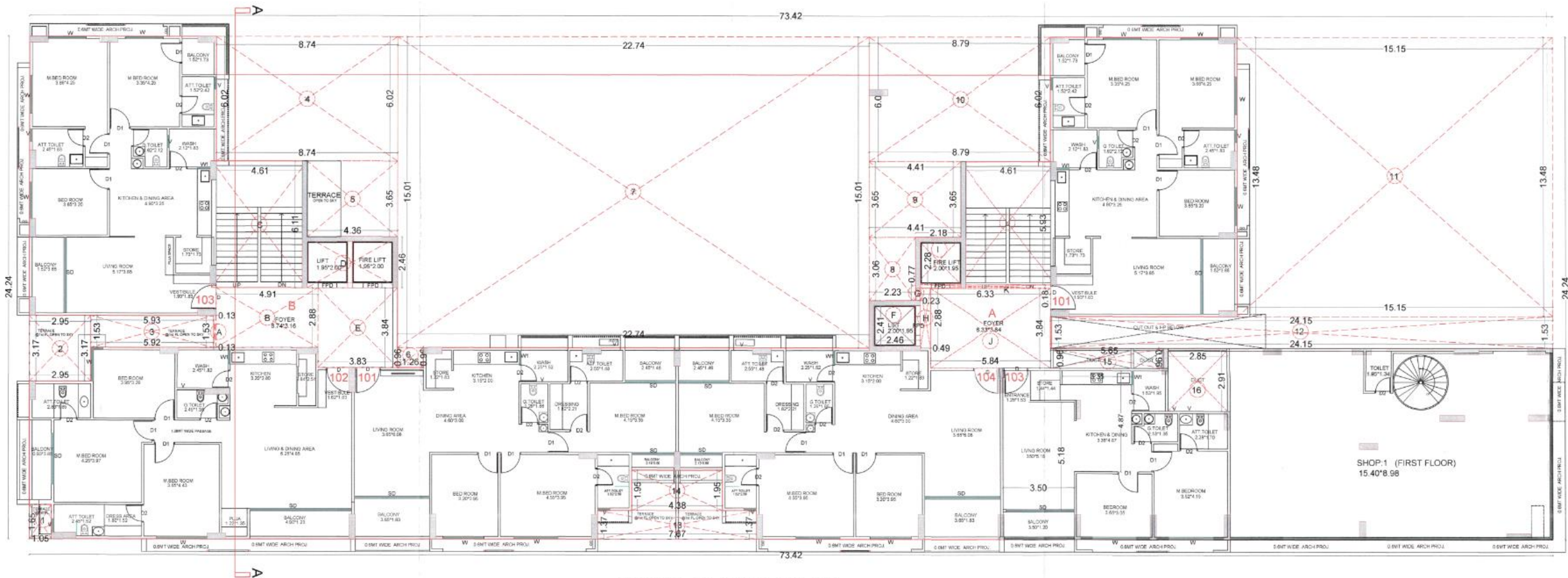




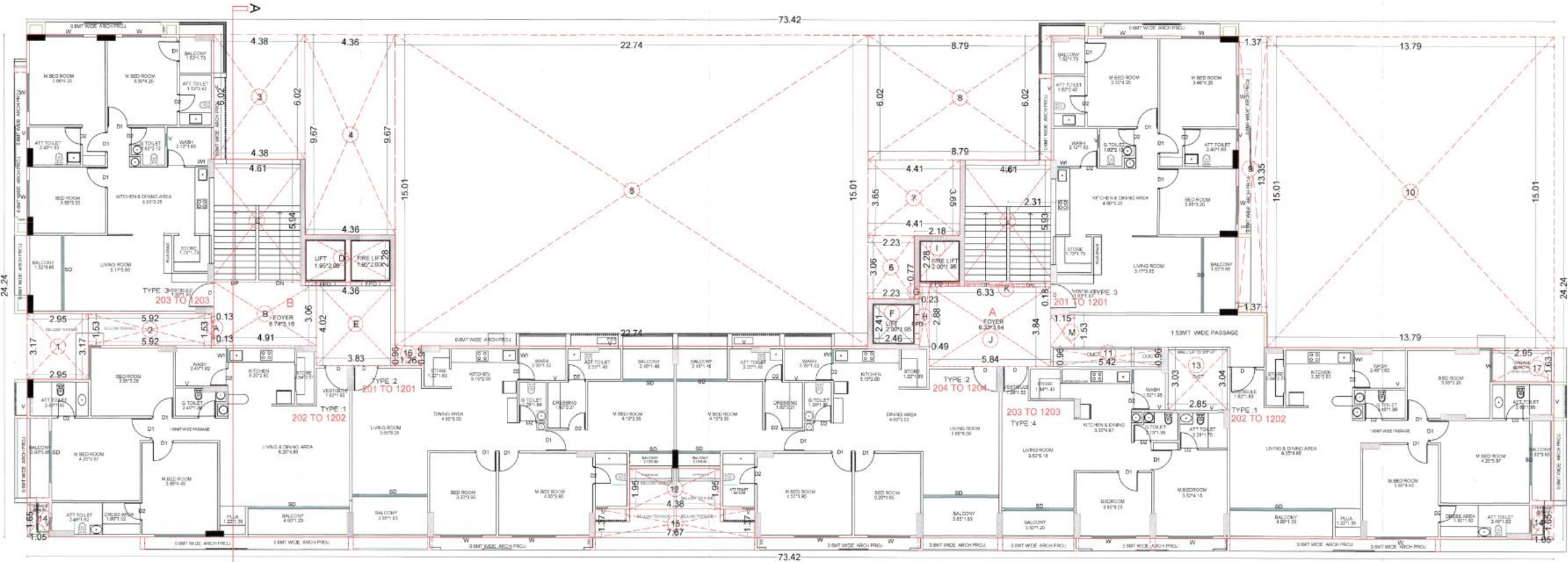




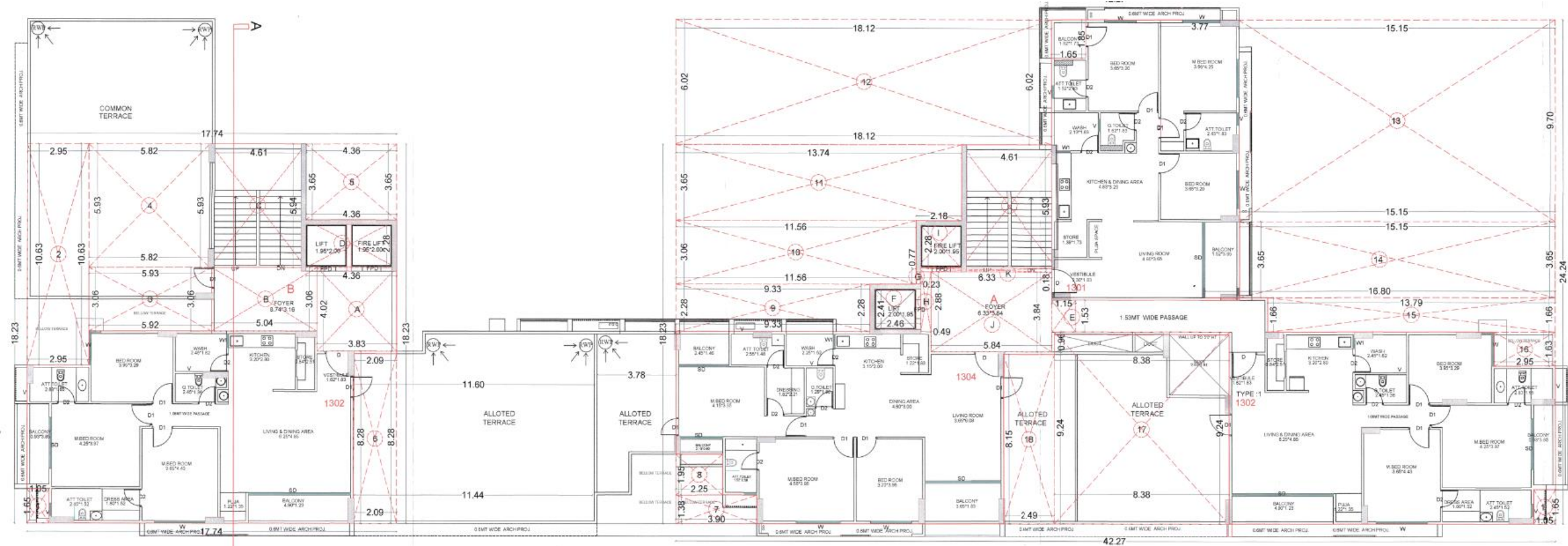
Ground Floor Plan



First Floor Plan



2nd To 12th Floor Plan



13th Floor Plan

SPECIFICATION

STRUCTURE	R.C.C. Earthquake resistance frame structure.
FLOORING	Premium quality vitrified tiles flooring in all rooms. KITCHEN : Granite platform with dado of designer glaze tiles up to lintel level with S. S. Sink.
TOILET	Designer glazed tiles dado up to lintel level with premium quality bath fitting, Pipe fitting and sanitary wares, Water proofing in all toilet.
WALL & PLASTER	Brick masonry wall, internal mala plaster with putty finished, External double coat sand face plaster with acrylic water proof paint.
DOORS & WINDOWS	Attractive main entrance door with wooden frame. All other internal door flush type with wooden frame with good quality fitting. Fully glazed powder coated aluminum section sliding windows with natural stone revile.
ELECTRIFICATION	Single phase concealed copper wiring with adequate number of points in all rooms. MCB Provision in main distribution board. Modular switches as per architects details.



Site Address: Atulya Pride

Opp. Sahajanad Sky, Near
SBI, Vavol, Gandhinagar.

For More Information: 86 86 02 02 89

