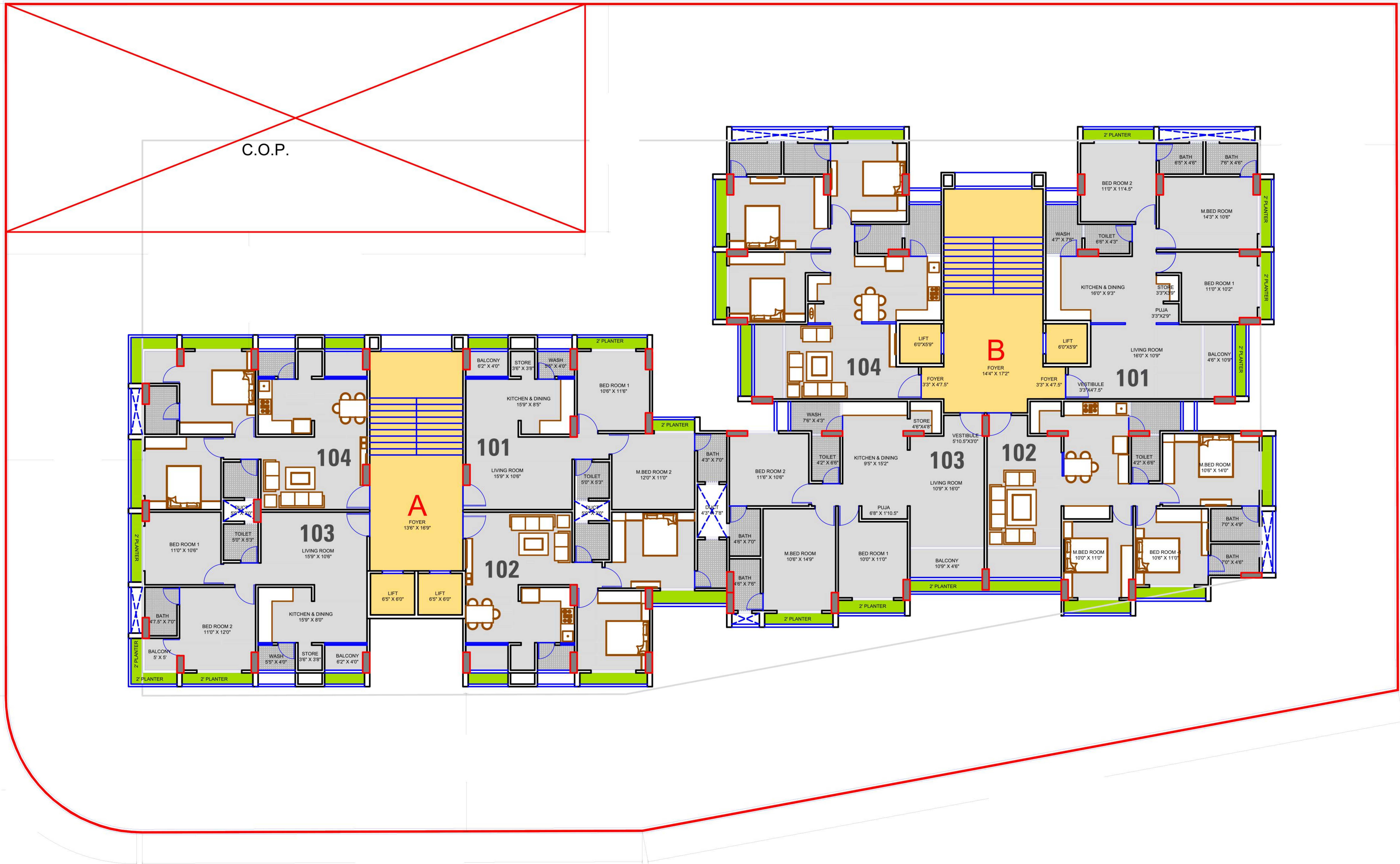


AASTHA
PRiDE

2 & 3 BHK LIVING SPACE

TYPICAL FLOOR PLAN



18 MTS WIDE ROAD (THIRTEEN FLOOR)

BASMENT PLAN



U.G.W.T
15' X 30' X 11'

BORE

18 MTS WIDE ROAD

15'-2" WIDE DRIVE WAY

22'-8" WIDE DRIVE WAY

14'-0" WIDE DRIVE WAY

13'-0" WIDE DRIVE WAY

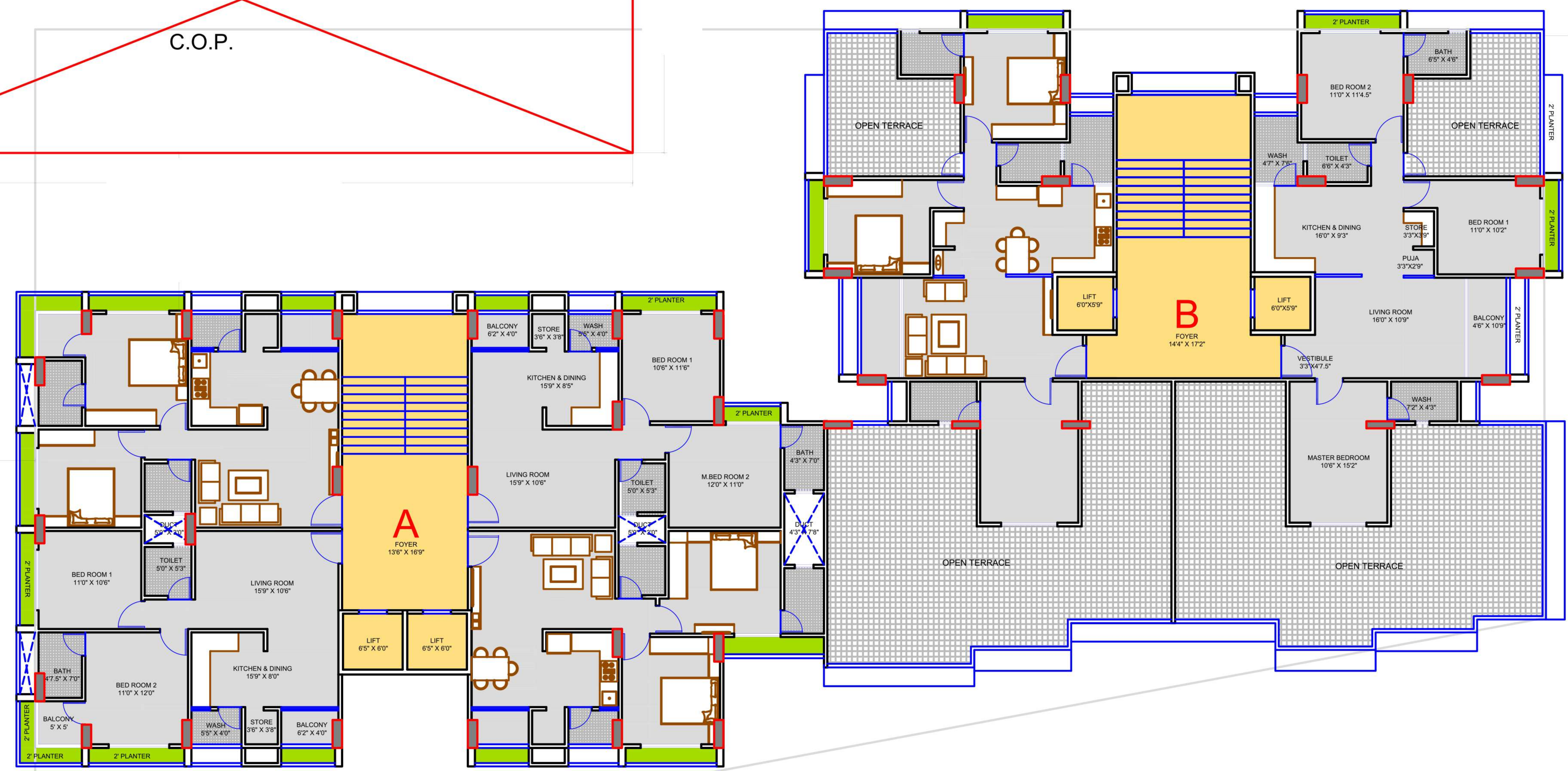
15'-5" WIDE DRIVE WAY

19'-9" WIDE DRIVE WAY

15'-3" WIDE DRIVE WAY

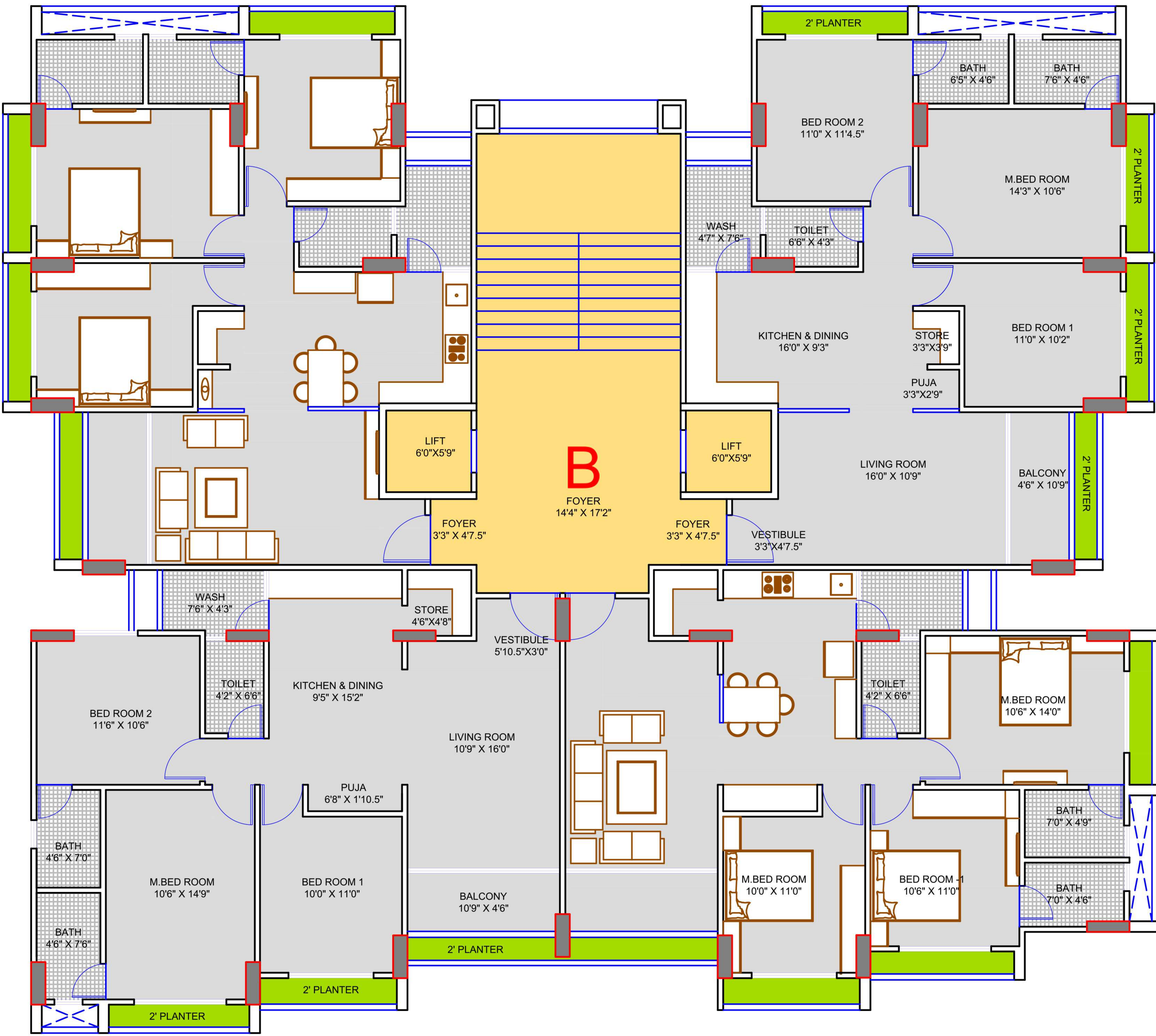
13TH FLOOR PLAN

C.O.P.

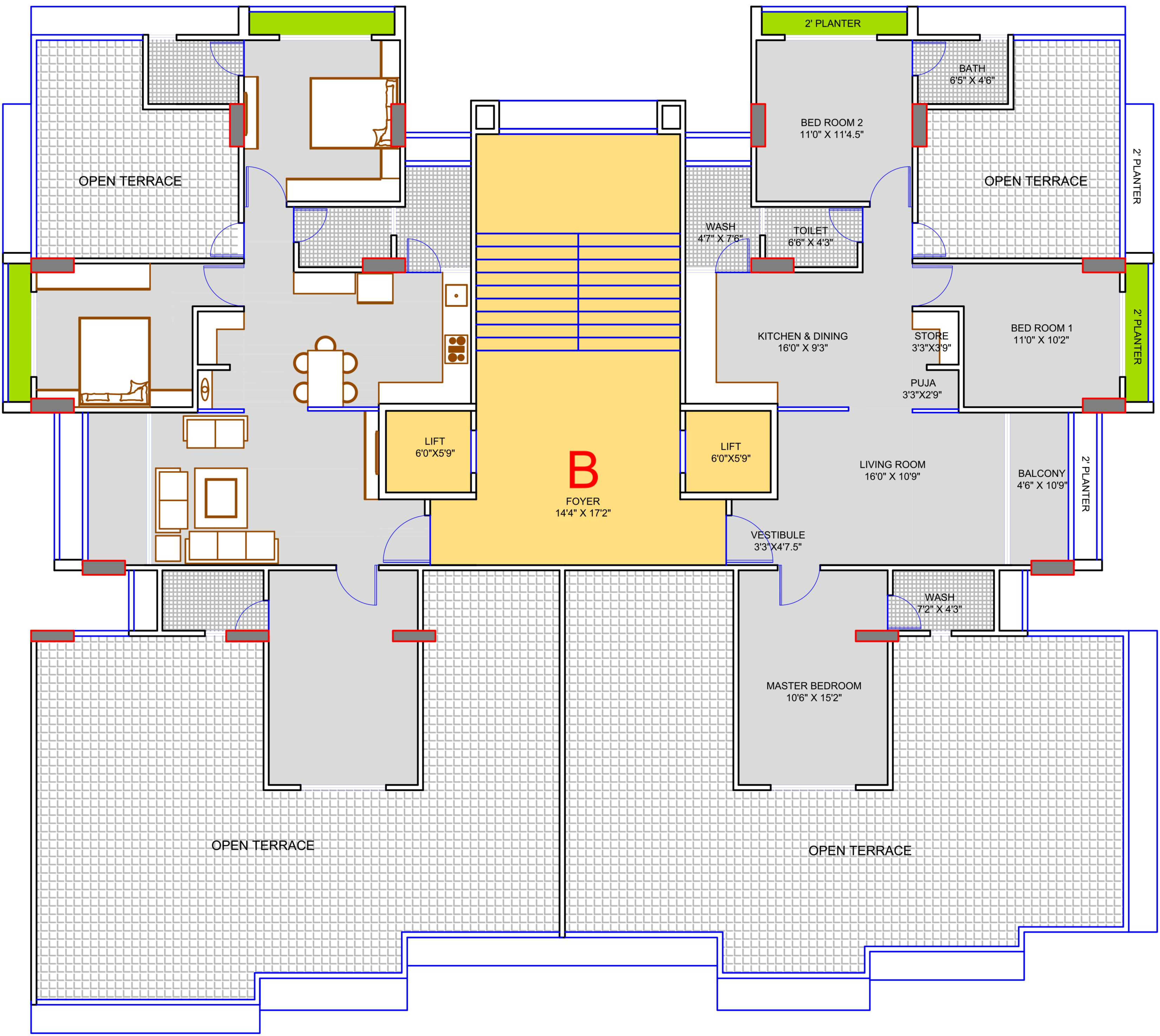


18 MTS WIDE ROAD

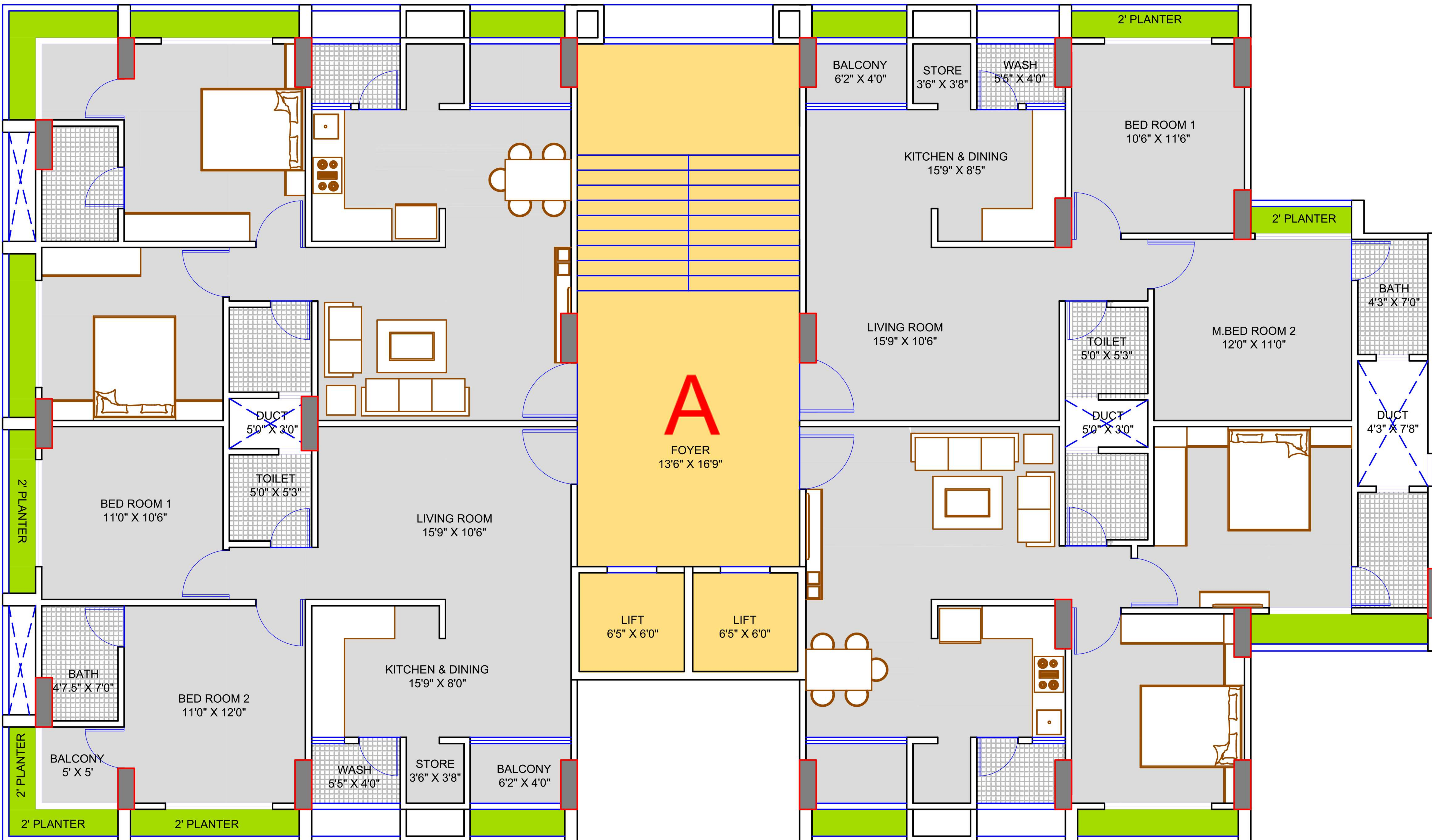
BLOCK-B



BLOCK-B - (13 FLOOR)



BLOCK - A





AASTHA PRIDE

SPECIFICATION :

FLOORING

Mirror polished vitrified tiles flooring in entire flat

KITCHEN

Black Granite platform with S.S. sink & tiles dado up to lintel level in kitchen

DOORS & WINDOWS

Wooden frame with decorative main door & flush door inside All windows with fully glazed shutter with in aluminium section

BATHROOMS & TOILETS

Glazed tiles dado up to lintel level in all bathrooms. Concealed plumbing with good quality fittings

WALL FINISH

External double coat sand face plaster & Internal mala plaster with wall putty

ELECTRIFICATION

Concealed copper wiring with standard accessories

TERRACE

China mosaic flooring with water proofing

STRUCTURE

RCC frame structure work with brick masonry wall

**AASTHA
PRIDE**

K Rd, Sector 26, Gandhinagar,
Gujarat 382027

Project By :-



॥ श्री शक्ति ॥
CORPORATION

