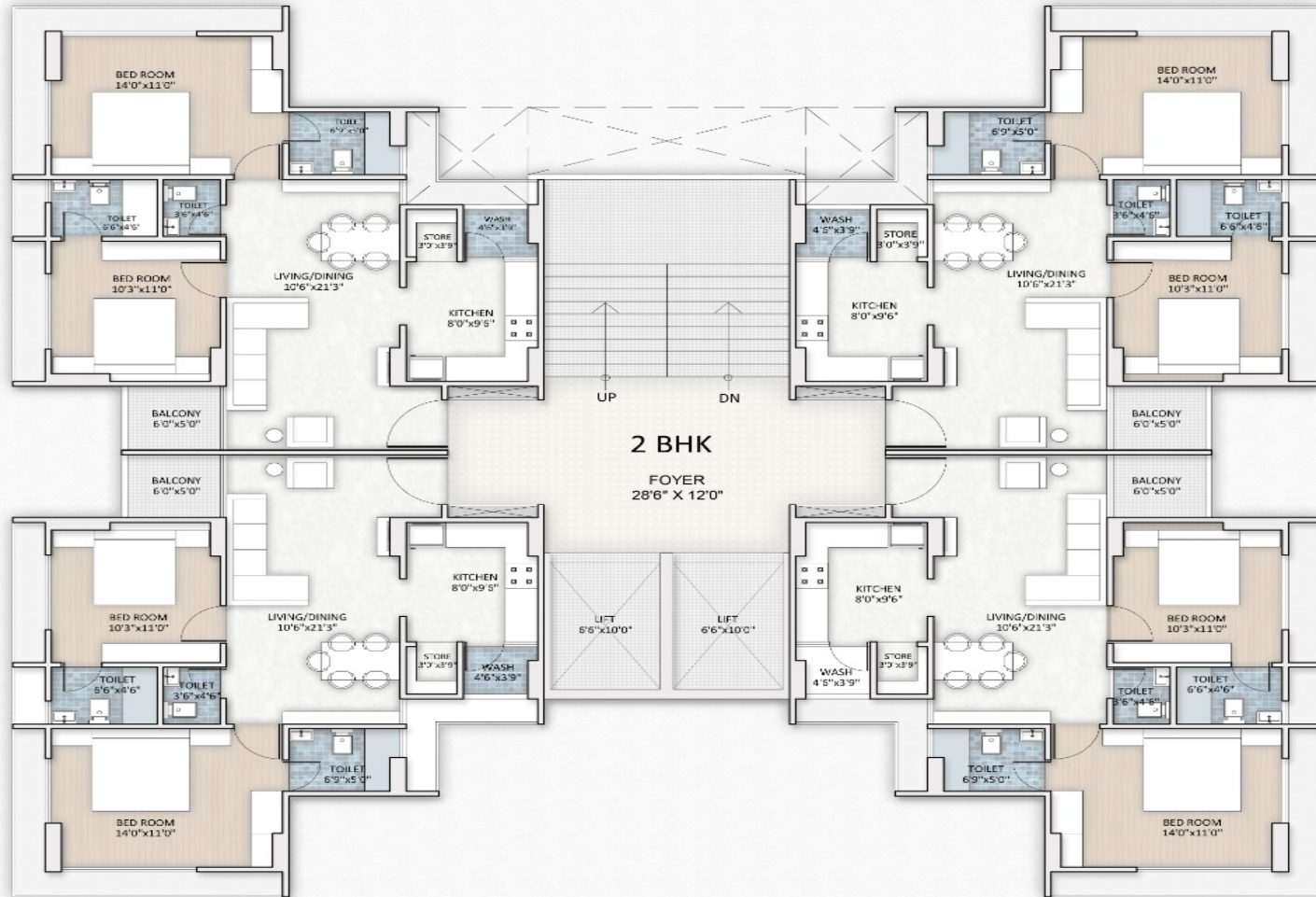


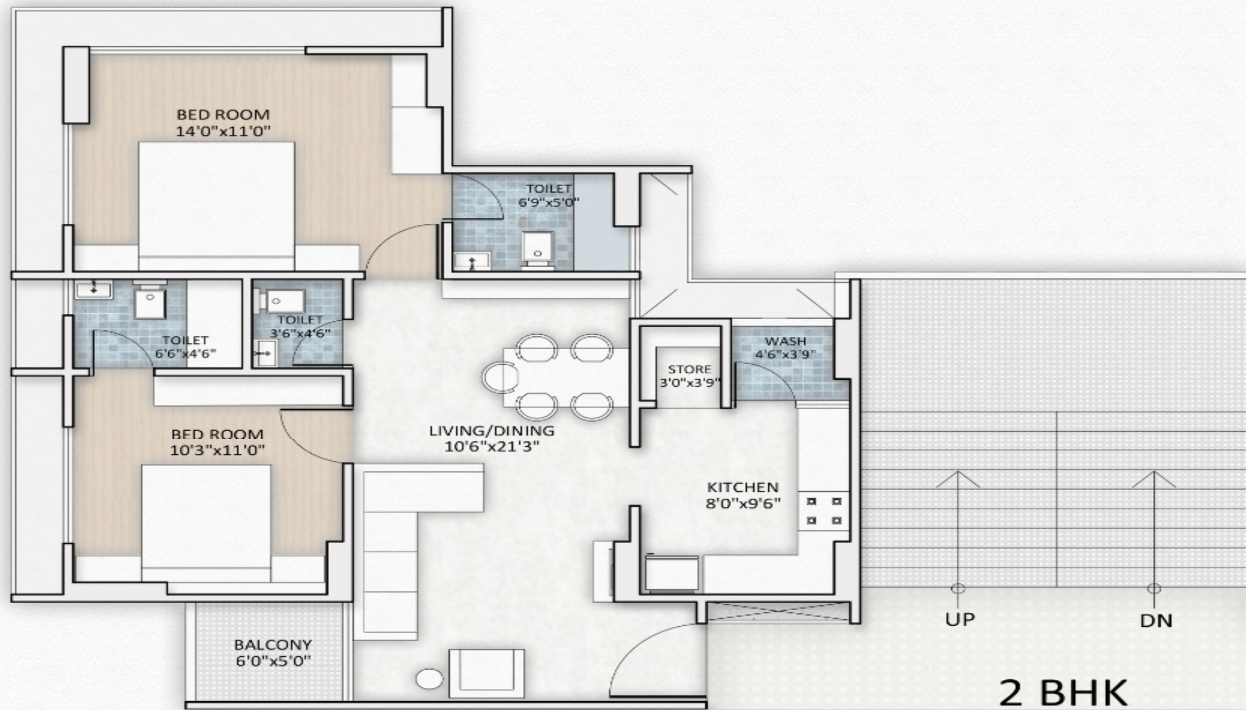
# PROPOSED RESIDENTIAL BUILDING @ RIVER FRONT, PALDI

DEVELOPER :-





2 B.H.K. S.B AREA 147 SQ.YDS





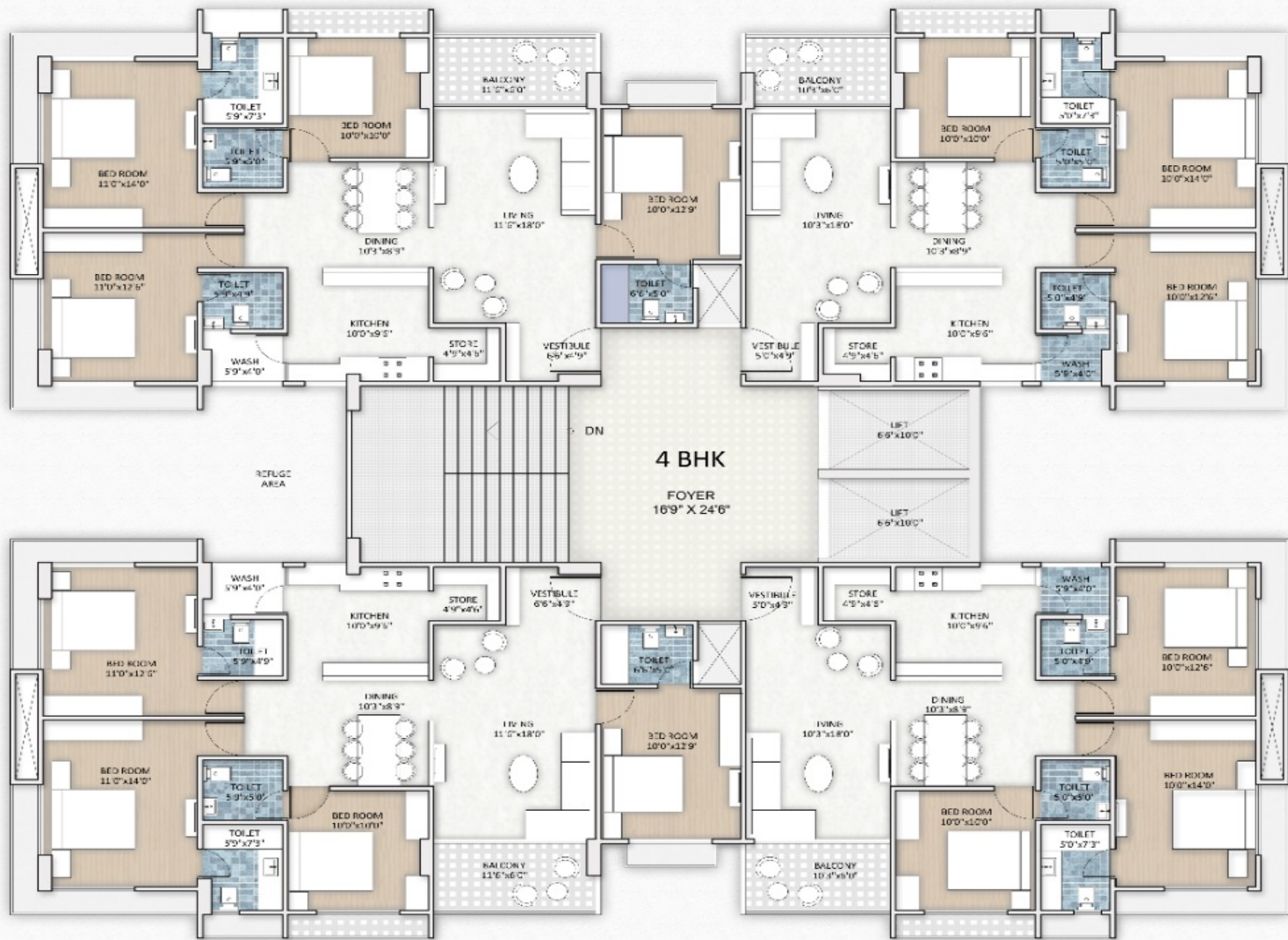




3 B.H.K. S.B AREA 201 SQ.YDS







**TYPICAL FLOOR PLAN**

3 B.H.K. S.B AREA 201 SQ.YDS  
 4 B.H.K. S.B AREA 245 SQ.YDS

## **SPECIFICATIONS**

### **FLOORING -**

600 X 600 Double charged vitrified tiles in entire flat.

### **FINISHES -**

Internal single mala plaster including putty finish on wall, external double coat sand face plaster.

### **KITCHEN -**

Kitchen platform granite top with mirror polish.

Ceramic tiles dado on kitchen counter up to full level with stainless steel sink & R.O. point.

### **TOILET -**

Premium designer tiles, dado up to full level with standard ISI fittings.

### **DOORS -**

Decorative laminated main door with wooden frame , All internal doors are flush door.

### **ELECTRIFICATION -**

Branded ISI modular switches 3-phase concealed copper ISI wiring with adequate number of points.

MCB distribution panel with ELCB.

### **PLUMBING -**

ISI CPVC and UPVC pipes for water supply, PVC & SWR pipes for solid waste and drainage systems.

Percolation recharge well as per the norms. Branded CP Fittings.

### **WINDOWS -**

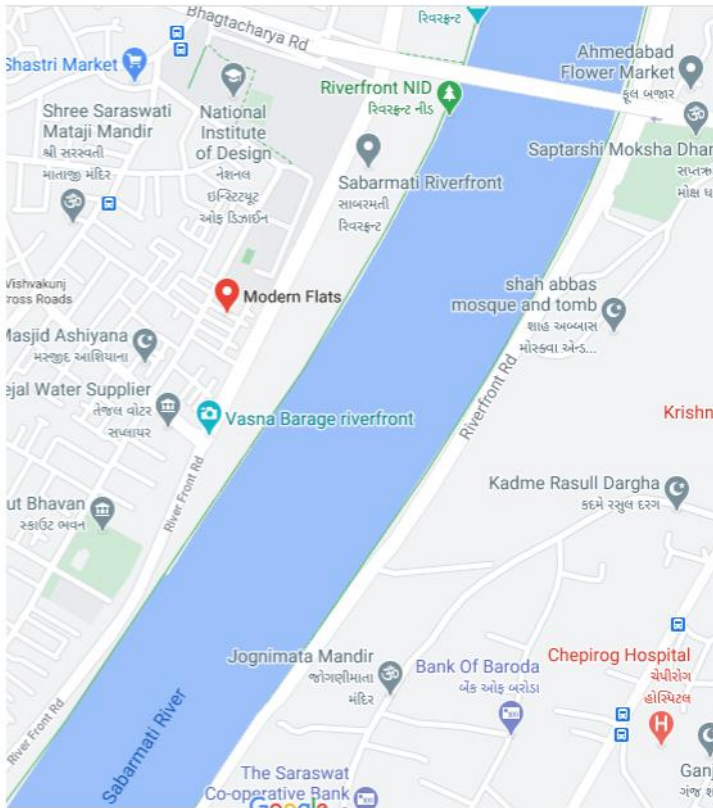
Powder coated Aluminum sliding windows with glass finishing with stone jamb.

### **TERRACE -**

Brick-bat concrete with china mosaic for heat reflection and thermal insulation.



# KEY PLAN :-



## SITE ADDRESS :-

**MODERN FLATS, Rajpath Society,  
Near NID, Paldi, Ahmedabad, 380007**

**Inquiry : +91 99240 11115  
+91 98240 87771**