



ACCESS
TO THE DELIGHTS
OF THE CITY
IN UNDER
5 MINUTES



GARDEN



MALL



MULTI PLEX



SUPER MARKET



HOSPITAL



SCHOOL



TEMPLE



WHERE CITY & PARK MEET



CHHADAVAD
POLICE CHOWKI

PARIMAL GARDEN

PARIMAL
CROSS ROAD

DEV
COMPLEX

KALYAN
JEWELLERS

WAGHBAKRI
HOUSE

UNIPATH
PATHOLOGY

JMC
HOUSE

ANAM-1

AMBUJA
HOUSE

RBL
BANK

GUJARAT
GAS

KALUPUR
BANK

PRERNA ARCADE
DCB BANK

DIVA EYE
HOSPITAL

ANAND
MANGAL 3

MUNICIPAL
SCHOOL

JAIN
UPASHRAY

PARIMAL
JAIN TEMPLE

AMIJYOT
APARTMENTS

AKSHAT
APARTMENT

TODI
BHAVAN

PARIMAL
FLATS

PARIMAL UNDER PASS

C.B. ROAD

TO PARIMAL UNDER PASS

TO PARIMAL GARDEN

POSITIVE
VIBES ALWAYS
COME FROM A
PERFECT
HOME



THE MOST MODERN
CONCEPT HOMES

KALA

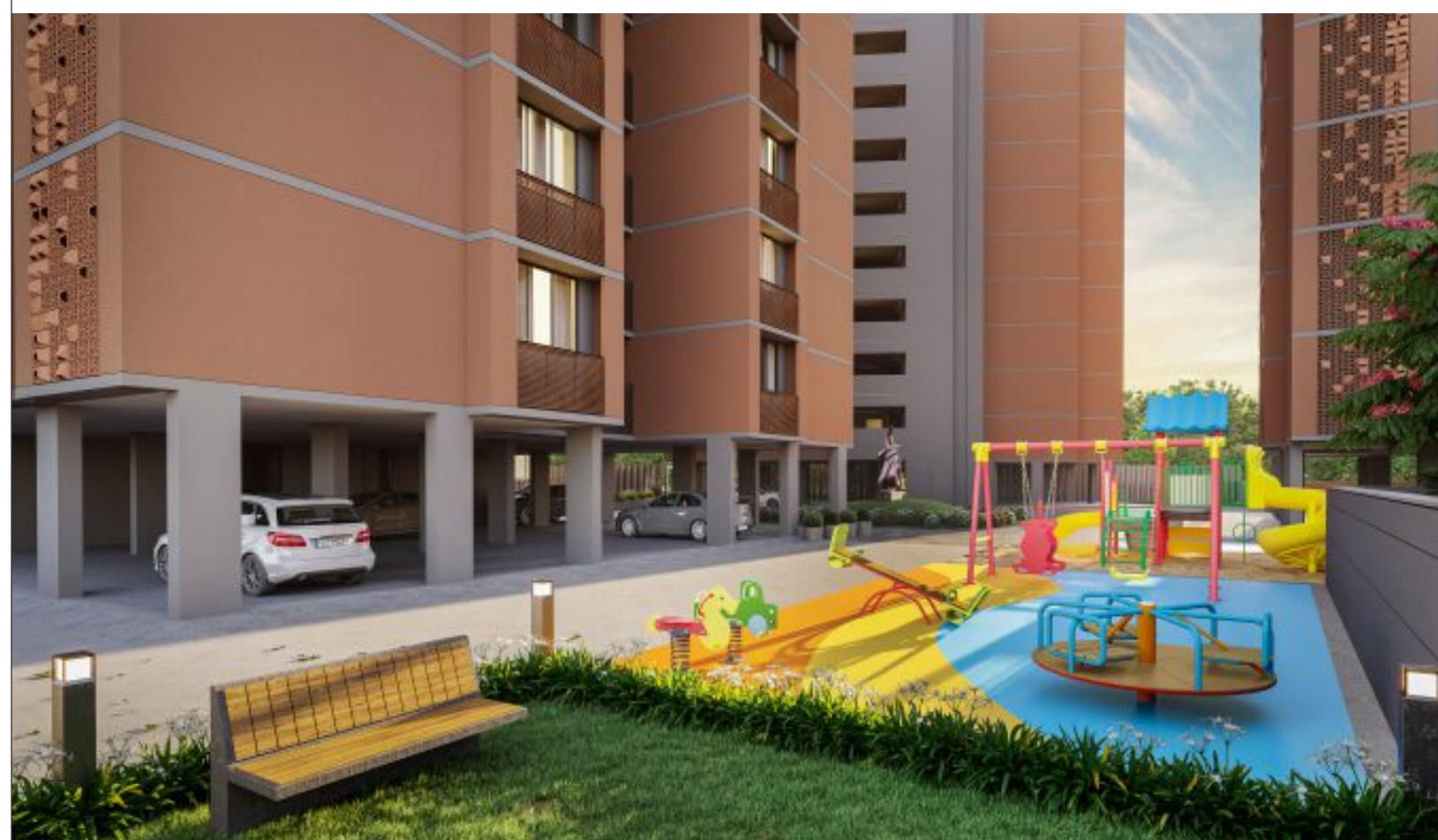




A FRESH, GREEN, STYLISHLY
LANDSCAPED ENVIRONMENT



CONNECT
WITH GOOD
TIME...



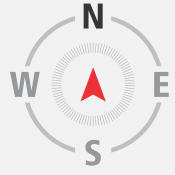
PROJECT FEATURES

 CLUB HOUSE & INDOOR GAMES	 DEVELOPED GYMNASIUM	 HOME THEATER
 SENIOR CITIZEN SIT-OUT	 CHILDREN PLAY AREA	 PARTY LAWN
 YOGA DECK	 2 AUTOMATIC BRANDED ELEVATORS IN EACH BLOCK	 BALCONY IN EACH UNIT
 ENERGY EFFICIENT COMMON LED LIGHTING	 SOLAR POWER SYSTEM FOR COMMON LIGHTS	 24 X 7 SECURITY
 24 X 7 WATER SUPPLY FROM AMC & BORE WELL	 FIRE FIGHTING SYSTEM AS PER AMC NORMS	 AMPLE CAR PARKING ON GROUND FLOOR & BASEMENT
 CCTV SURVEILLANCE FOR COMMON AREA	 INTERCOM FACILITY CONNECTED TO EACH FLAT	 ELEGANT ENTRANCE FOYER
 ELEGANT PAVING / TREMIX ROAD IN MARGIN AREA	 INTERNET PROVISION	 DTH / LAND LINE PROVISIONS
 RAIN WATER HARVESTING	 D.G. SET POWER BACKUP FOR COMMON AREAS	 VEHICLE ACCESS CONTROL

BASEMENT PLAN



TOWARDS PARIMAL GARDEN ▶



12.20 MT. WIDE ROAD

TOWARDS PARIMAL UNDERPASS ▶

GROUND FLOOR

- 01 SECURITY CABIN
- 02 PEDESTRIAN ENTRY
- 03 EVENT / PARTY LAWN
- 04 D.G. SET FOR POWER BACK-UP
- 05 YOGA DECK
- 06 INDOOR GAMES
- 07 GYMNASIUM
- 08 HOME THEATER
- 09 TODDLERS PLAY AREA / SAND PIT
- 10 KIDS PLAY AREA



12.20 MT. WIDE ROAD

TOWARDS PARIMAL UNDERPASS

3 BLOCK
G+10 FLOORS
HI-END
4-BHK
FLATS



TYPICAL FLOOR



TYPICAL UNIT PLAN





SPECIFICATIONS

● STRUCTURE

- Earthquake resistant RCC Frame Structure.
- Basement and hollow plinth for ample parking.
- Professionally water-proofed terrace with china mosaic for thermal insulation.

● WALL FINISHES

- Internal Plaster (with Birla / J.K. Putty)
- External Walls With a Mala/Sand Face Plaster with Acrylic Paint.

● FLOORING

- Good quality Vitrified Tiles (800 x 800 mm) Flooring in Drawing Room, Bedroom, Kitchen & Dining Area.
- Wooden tile in Balcony & Verandah.
- Good quality Designer Glaze Wall Tiles (24" x 12") Up to Lintel Level in Bathrooms.

● DOORS AND WINDOWS

- Decorative main door with Laminate Finish.
- Fully laminated internal wooden flush doors with Imported wooden frame & SS hardware.
- High quality powder coated /Anodized Aluminium Sliding windows (Jindal make) with clear glass 5mm.

● ELECTRICAL

- 3 phase (10 KW) concealed electrical copper wires (IS) with ample electrical points (Polycab / RR Cable)
- Premium quality Modular switches (Schneider make)
- Provision for Land Line Internet and DTH connections
- Geyser points in all bathrooms.

● PLUMBING AND SANITATION

- Premium quality sanitary ware (CERA) and CP fittings in all bathrooms. (Jaquar / Plumber) Heavy duty.
- High quality UPVC/CPVC plumbing line (Supreme / Astral / Prince)

● KITCHEN

- Premium quality granite kitchen platform with SS sink.
- Premium quality glazed tiles upto lintel level.
- Provision for convenient water Purifier installation, Chimney, Refrigerator Points.



A REDEVELOPMENT PROJECT BY

KALA
INFRASTRUCTURE

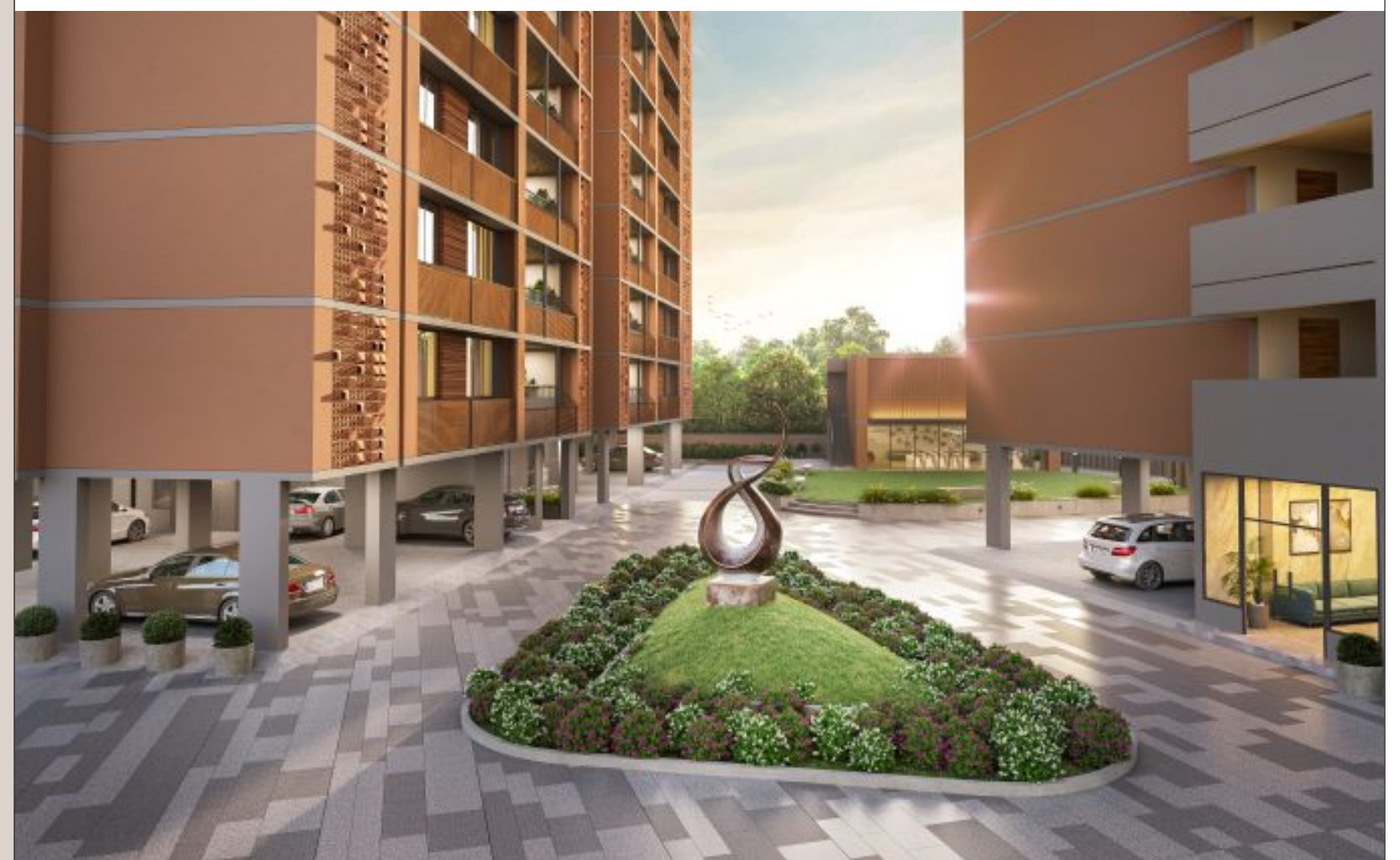
OFFICE : B-BLOCK, FIRST FLOOR,
KALA TIRTH COMPLEX, NR. PRERNATIRTH
DERASAR, JODHPUR, SATELLITE,
AHMEDABAD - 380 015. GUJARAT, INDIA

PHONE : + 91 - 79 - 2692 3423
MOBILE : + 91 - 99254 72278, 94260 01681
E-MAIL : KALA_PROJECTS@YAHOO.CO.IN
WEBSITE : www.kalagroup.co.in



SCAN FOR LOCATION

SITE : **KALA SAMARTHESHWAR**, OPP. AMIYOT APARTMENTS, BH. JMC HOUSE, PARIMAL GARDEN, AMBAWADI, AHMEDABAD - 380006.



KALA.

ARCHITECT

 HM ARCHITECTS

LEGAL ADVISOR

R.J.DAVE
(ADVOCATE HIGH COURT)

RERA - PROJECT REGISTRATION NUMBER :

PR / GJ / AHMEDABAD / AHMEDABAD CITY / AUDA / RAA08366 / 220421
Website : www.gujrera.gujarat.gov.in

