

*Take your first step
towards happy beginnings*



**SANKALP
Residency**





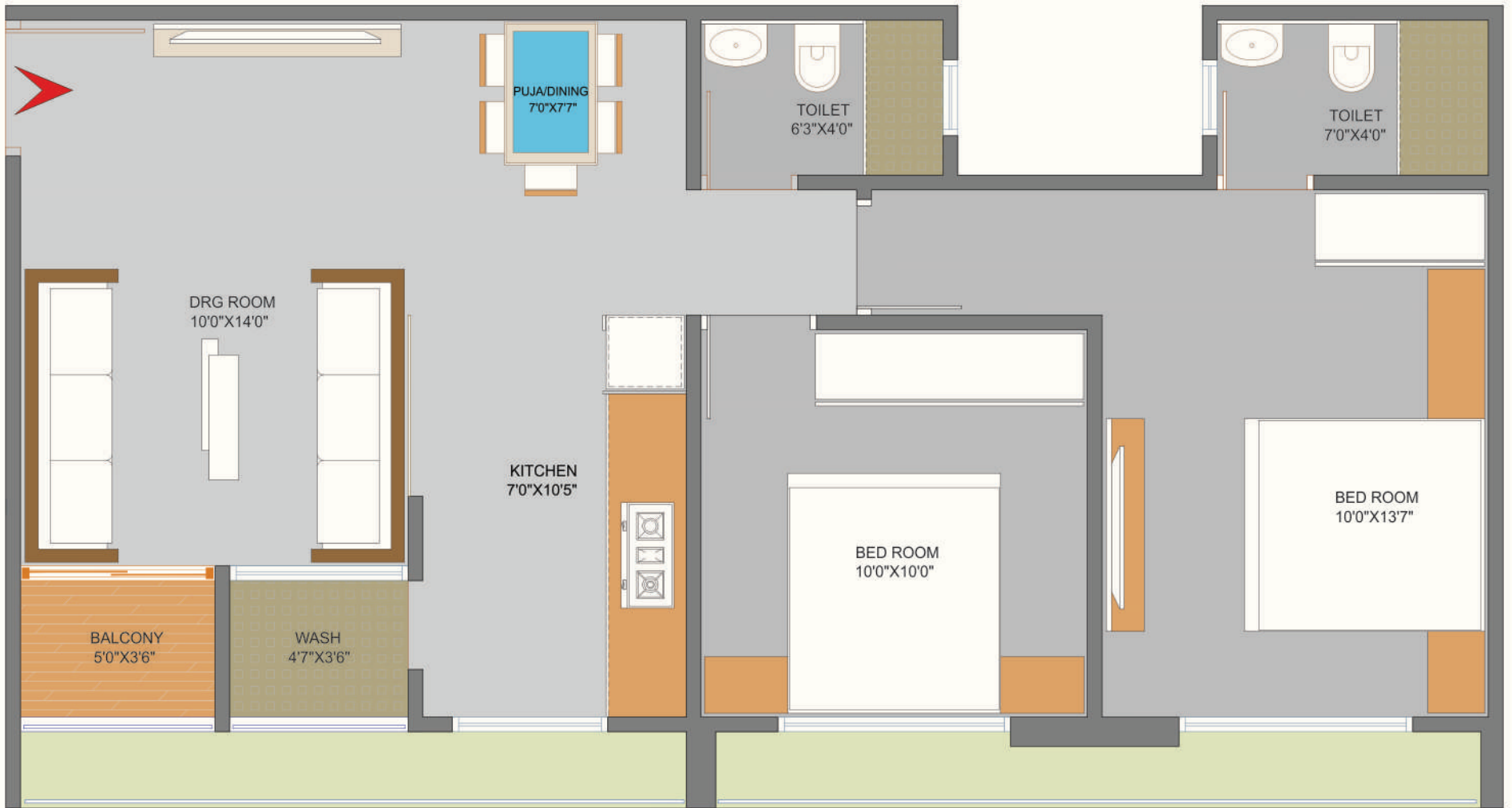


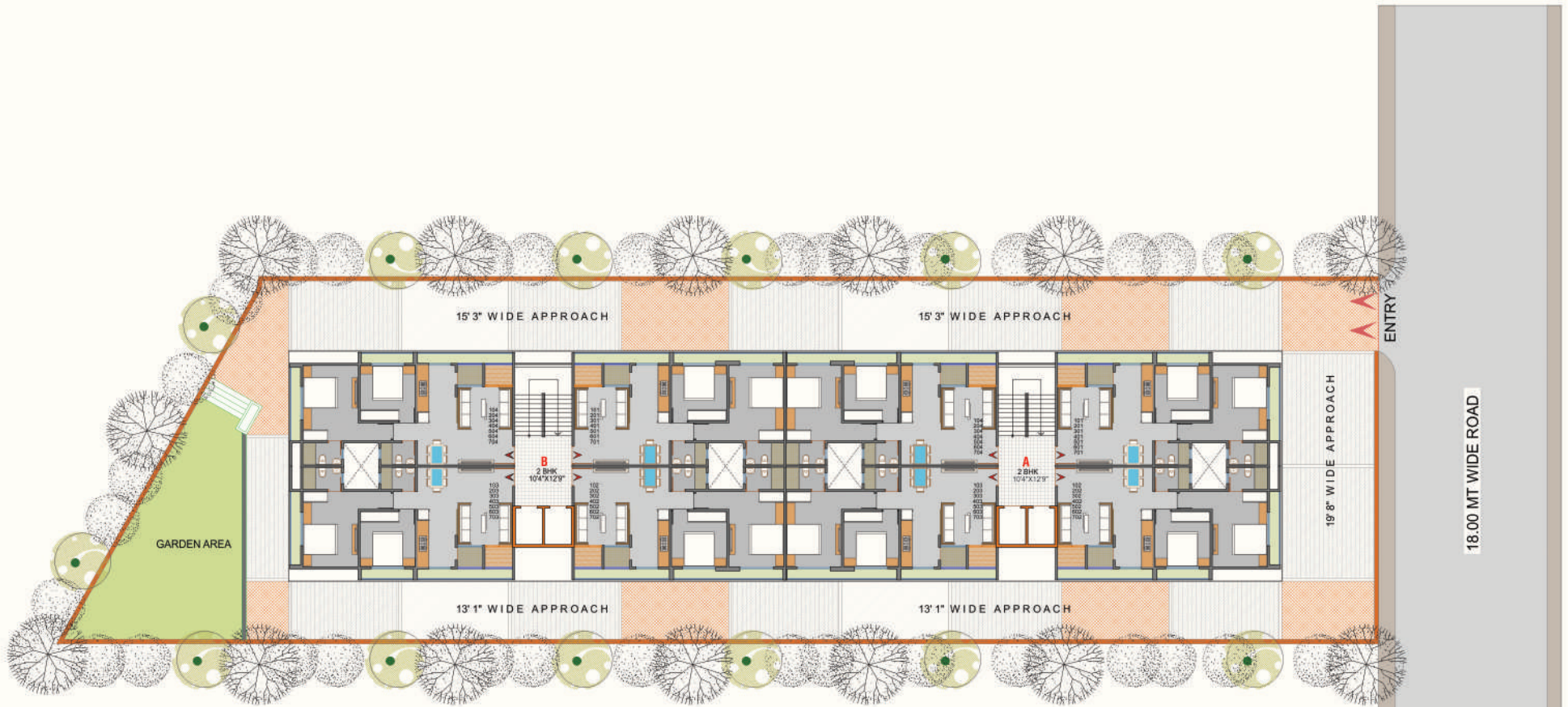
2 BHK PREMIUM HOMES

Fine Residential Living Space
Situated Amidst a Serene
Landscape and Flourishing Neighborhood

PURELY RESIDENTIAL PROJECT







1 TO 7 FLOORS PLAN

AND GROUND FLOOR IS FOR COMMON PARKING



LIFESTYLE AMENITIES



SPECIFICATIONS



FLOORING

Double charge vitrified tiles flooring in entire flat.



KITCHEN

Granite platform with S.S. sink & tiles dado up to lintel level.



DOORS

Wooden / Stone frame with decorative main door & flush door inside.



WINDOWS

All windows with fully glazed shutter with in aluminium section.



BATHROOMS & PLUMBING

Glazed tiles dado up to lintel level in all bathrooms. Concealed plumbing with good quality fittings.



ELECTRIFICATION

Single Phase Concealed I.S.I. copper wiring with standard accessories.



STRUCTURE

Earthquake resistance RCC frame structure work.



WALL FINISH

External double coat sand face plaster & outside texture with acrylic paint Internal mala plaster with wall putty.



TERRACE

China mosaic flooring with water proofing.

ARCHITECT

SHAPERS360

A PROJECT BY :

RAJSWA
INFRASTRUCTURE LLP



Site Address : Hathijan Circle, Opp. Sadguru Heritage,
 Nr. Kautilya School, New Maninagar (Vinzol), Ahmedabad-382445.
REG. RERA NO.: 00