

|| श्री निलय ||
Avenue



|| श्री निलय ||[®]
Group

www.shreenilaygroup.com • e-mail : info@shreenilaygroup.com

SITE :

SHREE NILAY AVENUE

Mansa - Itadara Rad, Nr. Dhanvir Hanuman Temple, Mansa - 382845.

CONTACT :

MANUBHAI PATEL
+91 98981 34653

SANI M. PATEL
+91 88441 34653

RASHMIN PATEL
+91 84010 22622

DEVELOPERS :



ARCHITECT :



98250 06842

|| श्री निलय ||
Avenue

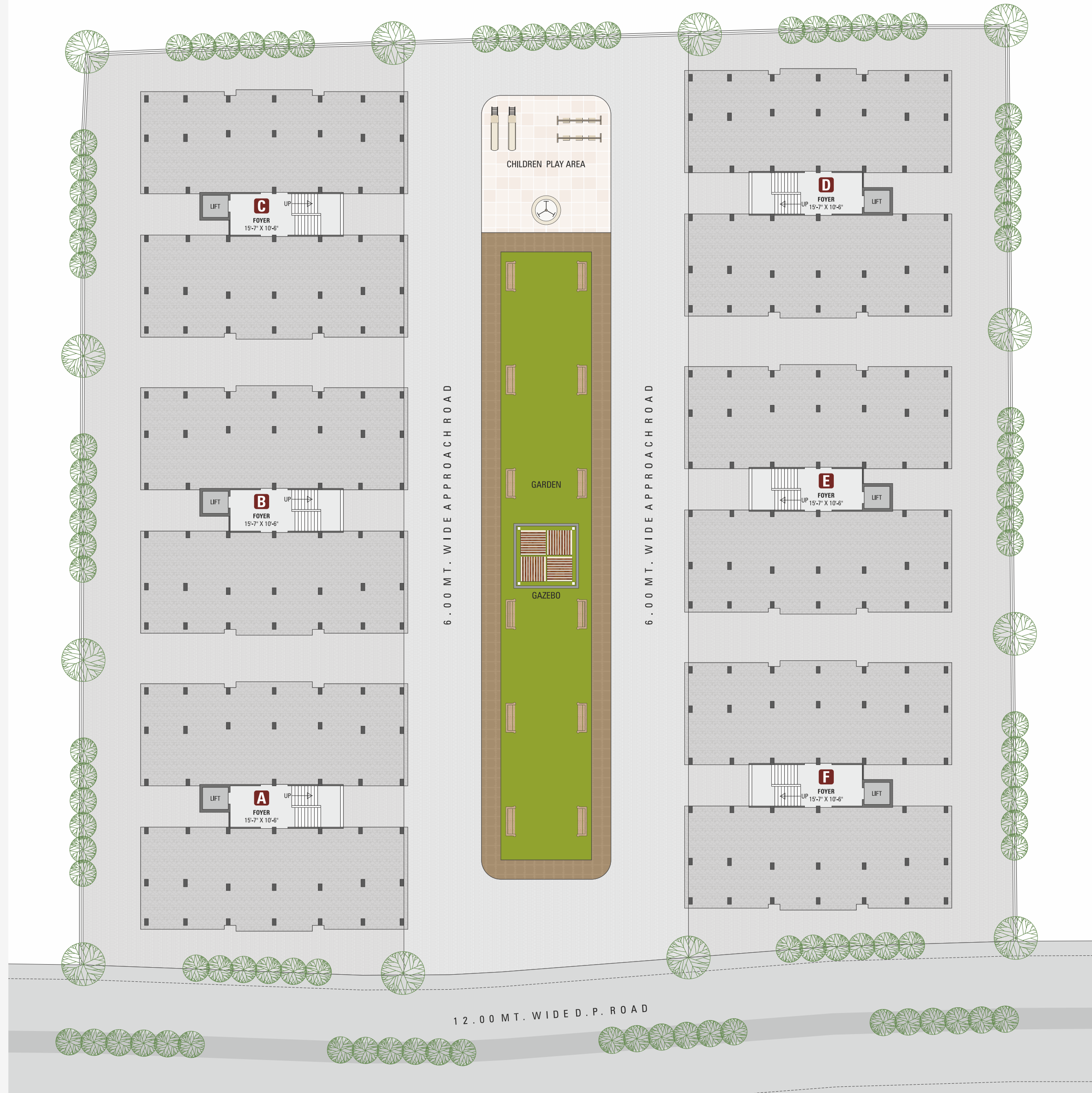
2 BHK A PREMIUM LIVING APARTMENTS



Where life is all about living your dream...

|| श्री निलय ||
Avenue

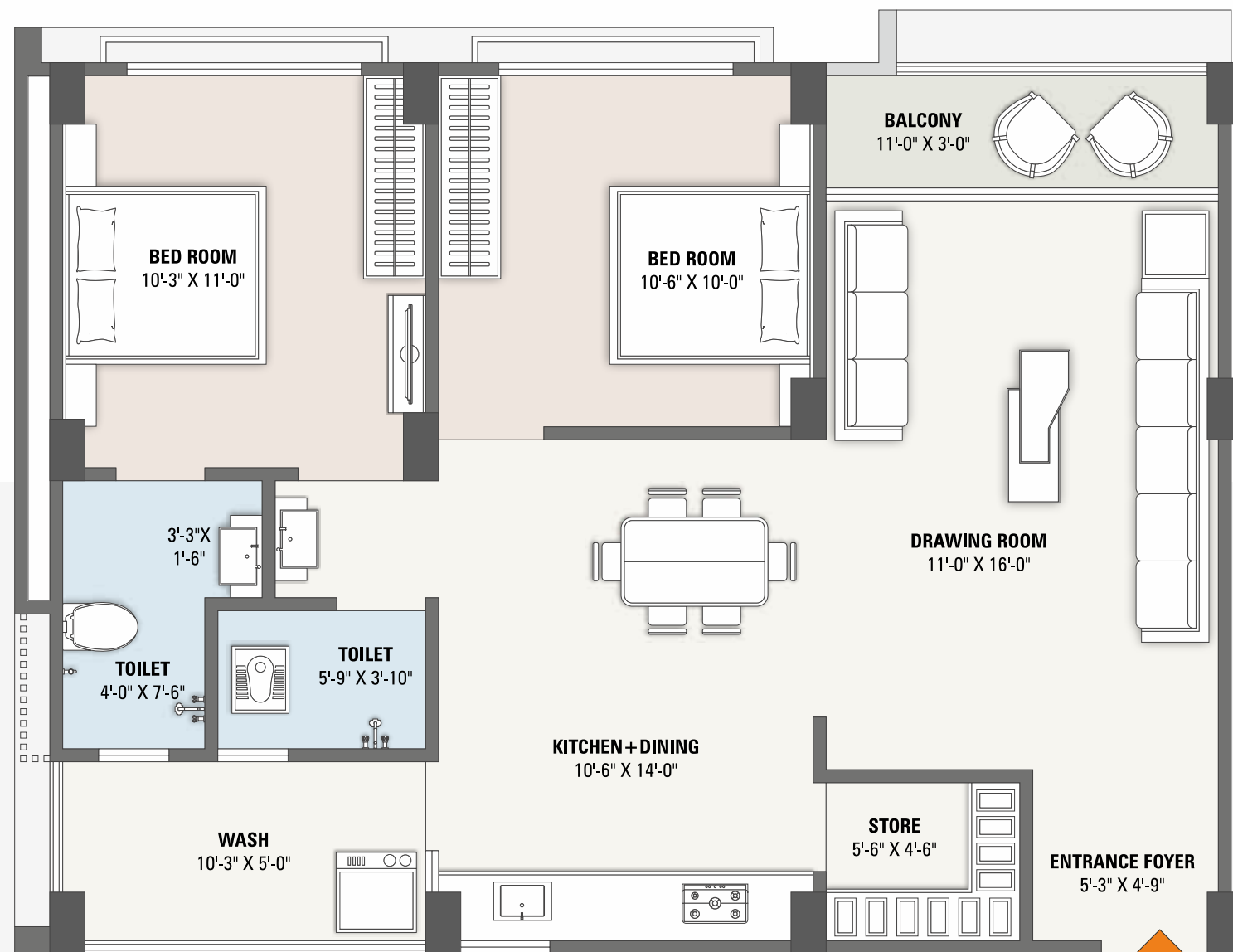
GROUND
FLOOR PLAN



TYPICAL
FLOOR PLAN



2 BHK
UNIT PLAN
For Block
A,B,C,D,E,F



SPECIFICATION

■ STRUCTURE

Earthquake resistant RCC frame structure designed for seismic condition as per regulations and coeds.



■ WALL FINISH

Internal wall mala plaster with putty finish
External wall double coat plaster.



■ FLOORING

Vitrified flooring in all bedrooms. Tiles in balcony
flooring in wash area. Tiles in bathroom.



■ KITCHEN

Kitchen Platform with granite stone with SS / Quartz sink
Tiling on kitchen wall up-to beam bottom level & Lintel level.



■ DOORS

Decorative main door with MS framing. Flush doors
in internal area with MS / Marble framing. Toilet & Bath Marble Frame.



■ WINDOWS

Powder coated aluminum windows of
medium section large window size for better air ventilation.



■ ELECTRICAL

Concealed ISI wiring with premium switches with ELCB / MCB.
2 way use of fan and light points in bedrooms.
AC electrical points in Master bedroom.



■ GENERAL

Decorative name plates, numbers &
CCTV camera provision common parking.



NOTE : • Good environment is the main Feature of the Society. • This Brochure is just for an easy presentation of the project and should not be treated as a legal document. • The entire dimensions given are approximate & unfinished. • Irregular payment cause for cancellation of the booking, refund would be given only after the said apartment has been resold (payment received form new purchaser & that to after deducting the cancellation charge.) • The details, facts specification & figures mentioned are compliance for information purpose only and are subject to modification / compliance require as Rera act. • Applicable stamp duty, registration charges, legal expenses, GST at applicable rate or any taxes levied by the government authority are to be borne by members. • Subject to Mansa Jurisdiction. • Total payment by Cheque / DD of NEFT or RTGS in favour of "SHREE NILAY GROUP"