



KESHAVAM
SAAVI



3 BHK PREMIUM APARTMENTS



KESHAVAM
SPAN

GJ-1-RA-3130

18.00 MT. WIDE ROAD

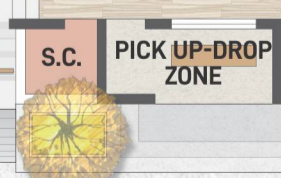
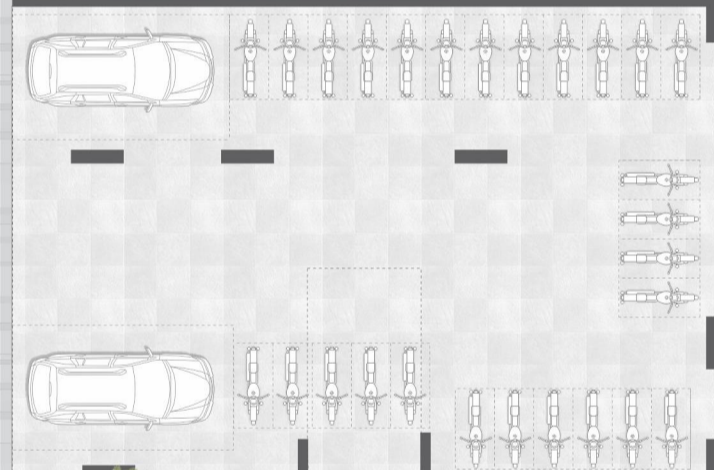
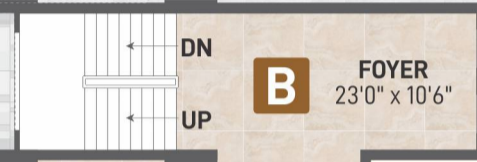
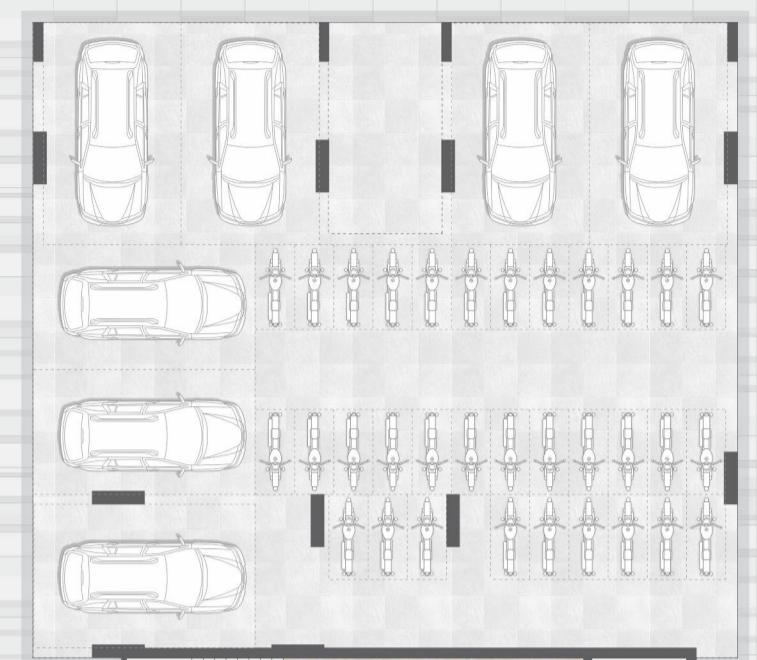
ELE. SUB

6.00 MT. WIDE ROAD

6.00 MT. WIDE ROAD

6.00 MT. WIDE ROAD

18.00 MT. WIDE ROAD



ENTRY



LAYOUT
 GROUND FLOOR



**TYPICAL
 FLOOR**

18.00 MT. WIDE ROAD

6.00 MT. WIDE ROAD

6.00 MT. WIDE ROAD

6.00 MT. WIDE ROAD

18.00 MT. WIDE ROAD

ELE. SUB

103 TO 703

104 TO 704

102 TO 702

101 TO 701

A FOYER
 22'10" x 10'6"

LIFT

LIFT

UP

DN

101 TO 701

102 TO 702

104 TO 704

103 TO 703

B FOYER
 23'0" x 10'6"

LIFT

LIFT

DN

UP

BASKET BALL

CHESS

GARDEN

CHI. PLAY AREA

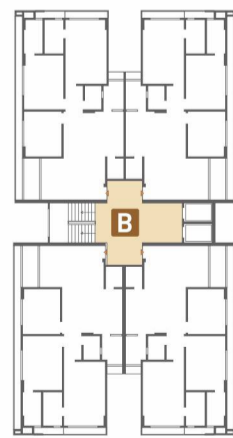
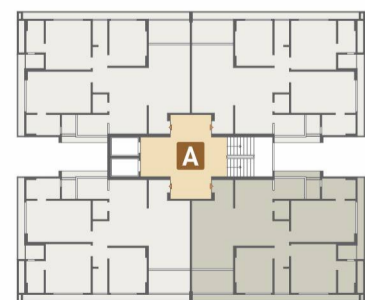
GAZEBO

S.C. PICK UP-DROP ZONE

ENTRY



TYPE : 01
BLOCK : A
UNIT NO:
 101 TO 701,
 102 TO 702,
 103 TO 703,
 104 TO 704

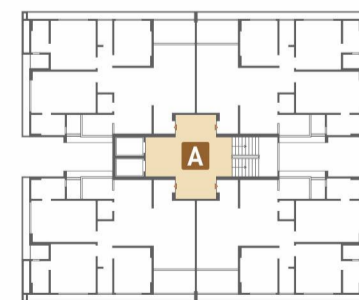


3 BHK FLOOR PLAN

TYPE : 02

BLOCK : B

UNIT NO:
 101 TO 701,
 102 TO 702,
 103 TO 703,
 104 TO 704





SPECIFICATIONS

- **STRUCTURE**
R. C. C. frame Structure. Structure design as per IS code considering earthquake resistance.
- **WALL**
All internal walls will be finished with putty over mala plaster. All external wall will be finished with mala Plaster with texture finish.
- **PLUMBING**
Concealed plumbing with premium quality pipes and fittings, Common bore well for continuous water supply.
- **FLOOR FINISH**
Premium quality designer vitrified tiles in drawing room dining area with kitchen and all bedroom area.
- **TOILETS**
Full covered elegantly designed toilets with designer tiles and colour coordinated sanitary ware.
- **ELECTRIFICATION**
Concealed copper wiring with adequate number of electrical points & branded modular switches.
TV point in drawing room & TV & AC Points in bedrooms.
- **KITCHEN**
Ready to use granite finished platform with SS sink, Designer Glazed tiles with dado up to beam level.
Plumbing and electrical provisions for water purifier & washing Machine, Kota stones self in store room.
- **DOORS & WINDOWS**
Decorative wooden polished main entrance door with brass fitting and fixtures.
All other doors are flush doors. Fully/ Glazed aluminum Windows with stone sill.
- **TERRACE**
Open terrace finished with suitable water proofing with China - mosaic flooring for heat reflection.



Notes: Stamp Duty, Registration Charges, Legal Documentation Charges, Advance Maintenance, Fix Maintenance Charges, GUDA & Electrical Co. Charges including cable and sub-station cost shall be borne by the purchaser. • GST, Any Additional charges, taxes, cess or duties levied by the Government / Local authorities prior, during or after the completion of the scheme will be borne by the purchaser. • In the interest of the continual developments in design and quality of construction, the developer reserve all rights to make suitable changes in the scheme and all the purchasers shall abide by such changes. • Changes / Alteration of the any natural, including the elevation, exterior colour scheme of the apartments or any other change affecting the overall design concept and the outlook of the scheme are strictly not permitted during or after the completion of the scheme. • This brochure is intended only to convey the essential design and technical features of the project and shall not be construed form part of the legal document. Agreement for sale shall be final and binding to the purchaser. • All elements, objects, treatments, materials, equipment and colour schemes shown are artist's impression. Actual may be different as per architect's design. • All dimension shown here are unfinished to unfinished wall and the longest measure of the area. • Subject to Gandhinagar Jurisdiction



PROJECT BY
KESHAV
INFRA

Site : Keshavam Saavi, Opp. Shreeji Bunglows,
Gandhinagar- Mansa Highway , Randheja, Gandhinagar- 382620
For more information +91 97250 02989

ARCHITECT



STRUCTURAL



KESHAVAM
SAAVI

