

SHIVAM *revanta*

LUXURIOUS 3BHK APARTMENT  
& PREMIUM SHOPS



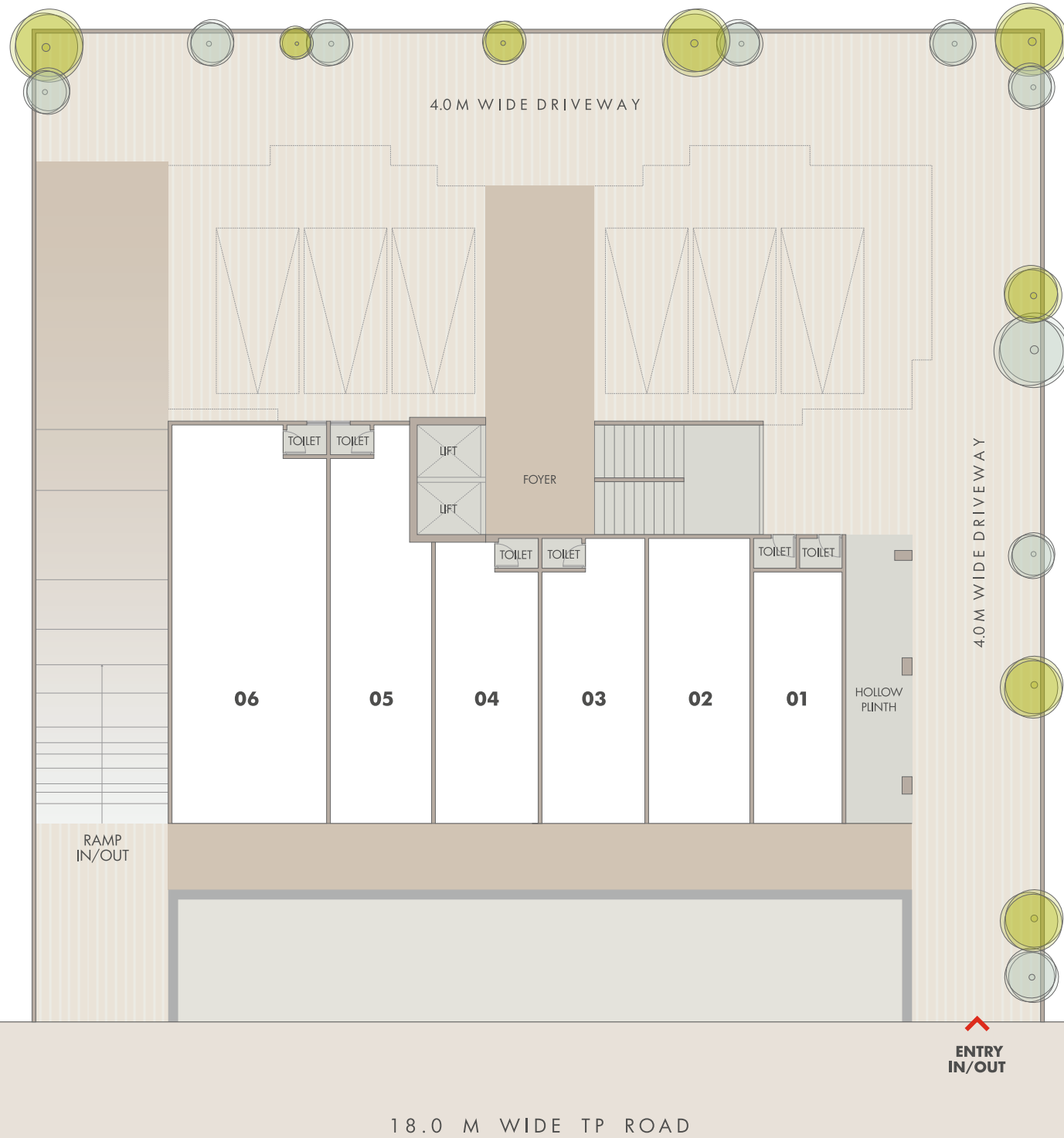
SHIVAM *revanta*

SHIVAM *revanta*



# GROUND FLOOR PLAN

SHOWROOM - 1	8'9" X 24'9"
SHOWROOM - 2	10'0" X 28'3"
SHOWROOM - 3	10'3" X 28'3"
SHOWROOM - 4	10'3" X 28'3"
SHOWROOM - 5	10'0" X 39'6"
SHOWROOM - 5	15'3" X 39'6"

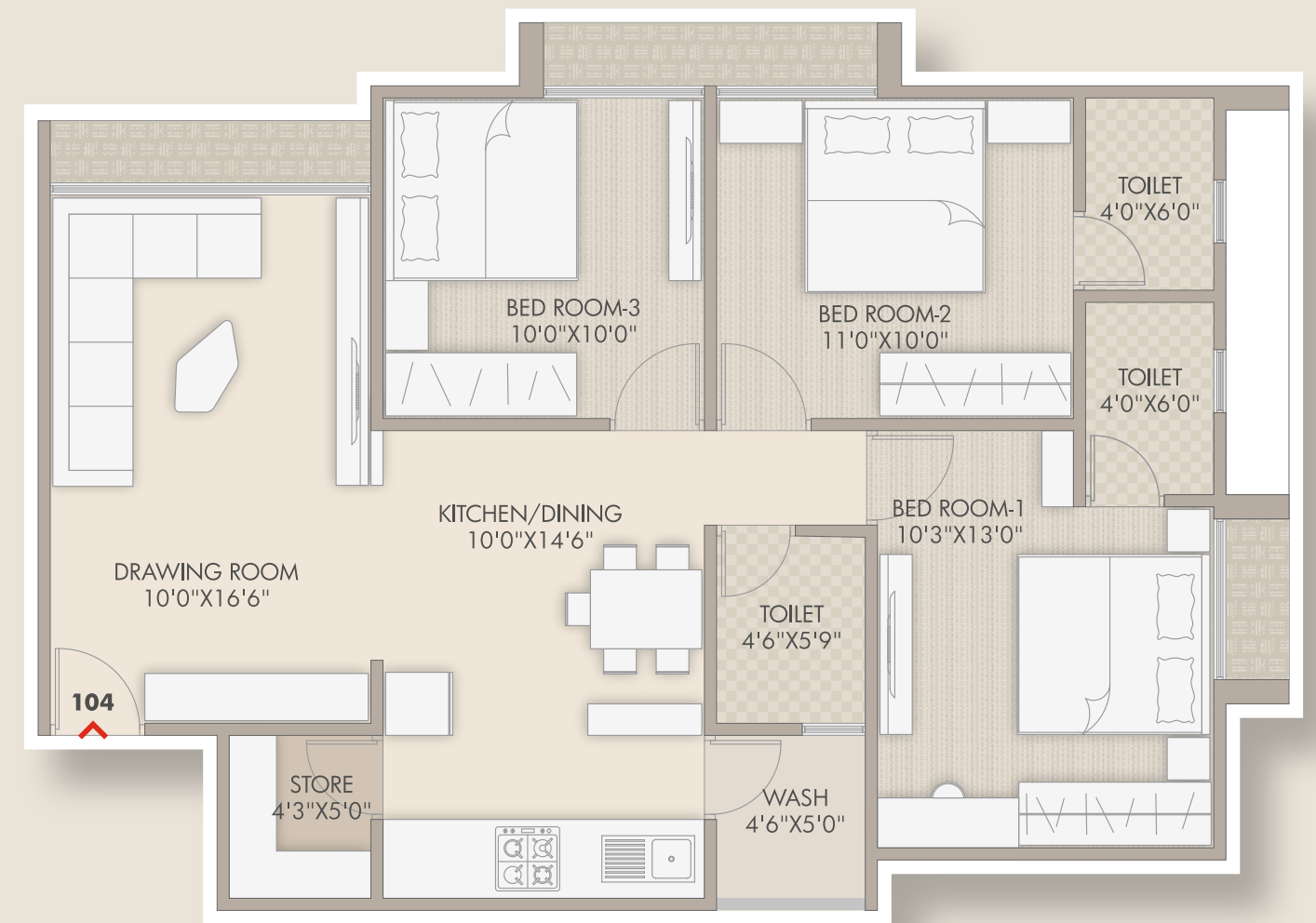


# TYPICAL FLOOR PLAN

1ST FLOOR TO 7TH FLOOR



# 3BHK TYPICAL UNIT





## SPECIFICATIONS

- STRUCTURE : Earthquake Resistant R.C.C Frame Structure & Block work
- WINDOWS : Premium Quality aluminum section windows
- ELECTRIFICATION : Adequate electrical points and individual distribution board in all units including AC points
- FLOORING : Quality Vitrified tiles
- LIFT : Two lifts of well known brand
- DOOR : Main Door - Good Quality Wooden Door & Internal Door - Flush Door

## AMENITIES



CCTV  
SURVEILLANCE



2 AUTOMATIC  
ELEVATORS



BASEMENT  
PARKING AREA

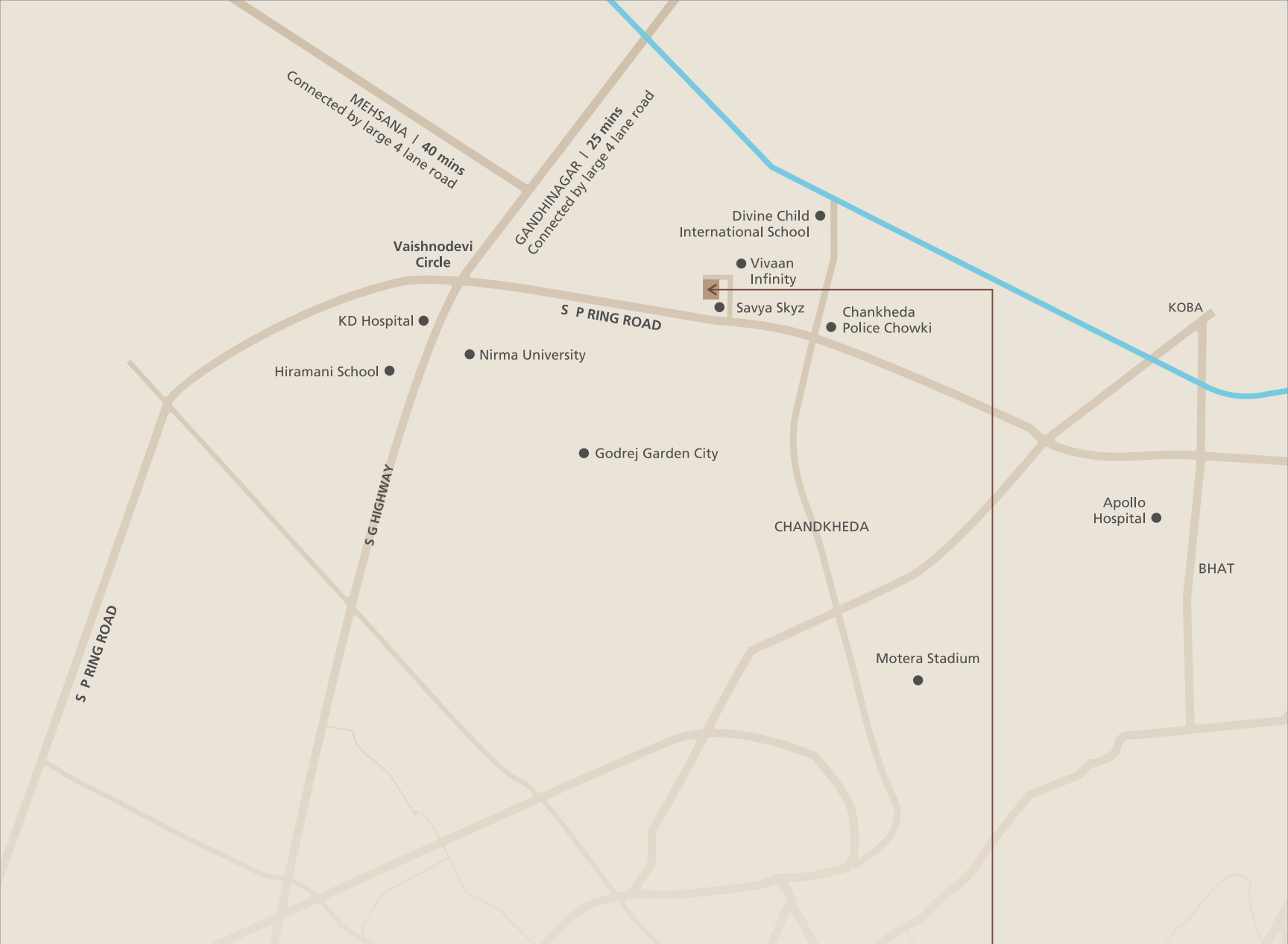


FIRE  
SAFETY



U.G. WATER TANK  
& BORE WELL





A Project By:  
**ANANTA INFRASPACE**

For Inquiry:  
**70699 06000**

Architect :  
**La Dementia' Architects**

Structural Engineer :  
**Shreeji Structural**

**Notes :**

- All rights reserved to developer for any changes in plan & specifications.
- Irregular payment shall cause cancellation of booking.
- In case of cancellation of unit 10% of payment received will be deducted as a management services charges and balance amount will be returned only after the resell of the unit.
- Electricity, AUDA, Stamp duty, Legal charges, GST, Registration fees & Other Tax will be levied extra.
- Detail & dimensions in model and brochure are indicative & for the tentative representation only which should not be treated as legal documents.
- Any additional charges or duties levied by the Govt. / Local authorities during or after the completion of the scheme will be borne by the purchaser.
- Subject to Ahmedabad Jurisdiction.