



2 & 3 BHK PREMIUM APARTMENTS & SHOPS







Second
Floor Plan

ENTRY

18 MT. WIDE ROAD



Third
Floor Plan

ENTRY

18 MT. WIDE ROAD



Typical
Floor Plan



Pent House
Floor Plan

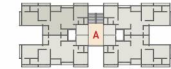
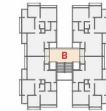
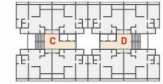
14Th Floor

14Th Floor

13Th Floor

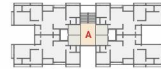
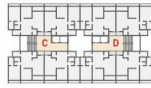
3
BHK
Type - A

Block - A
101 & 104, 201 & 204,
301 To 1201, 302 To 1202,
303 To 1203, 304 To 1204



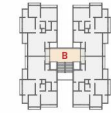
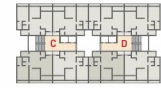
3
BHK
Type - B

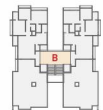
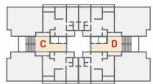
Block - B
101 To 1301, 102 To 1302,
103 To 1303, 104 To 1304



2
BHK
Type - A

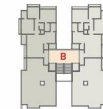
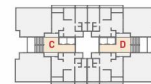
Block - C & D
101 To 1301, 102 To 1302,
103 To 1303, 104 To 1304





3
BHK
Pent House
Type - A

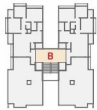
Block - A
1301 & 1304



3
BHK
Pent House
Type - B

Block - B
1402 & 1403





2
 BHK
 Pent House
 Type - A

Block - C & D
 1402 & 1403




 Basement - 01

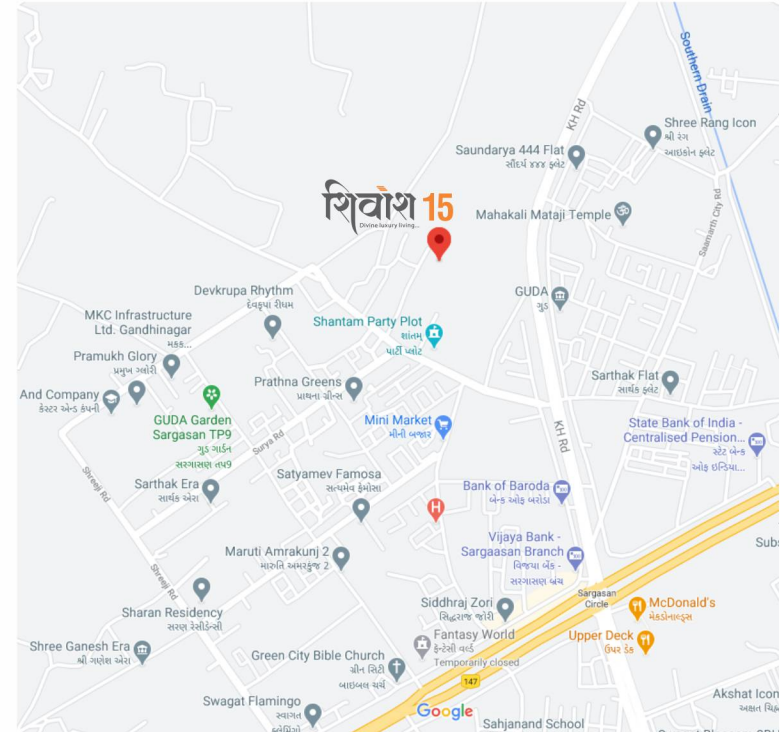



 Basement - 02

SPECIFICATIONS

- **STRUCTURE** : R. C. C. frame Structure. Structure design as per IS code considering earthquake resistance.
- **WALL** : All internal walls will be finished with putty over mala plaster.
: All external wall will be finished with double coat mala Plaster with texture finish.
- **PLUMBING** : Concealed plumbing with premium quality pipes and fittings. For continuous water supply, a common borewell.
- **FOORING** : Premium quality designer vitrified tiles in drawing room dining area with kitchen and all bedroom area.
: Hollow Plinth Area-paved With Designer Tiles / Blocks Or Natural Stone
- **TOILETS** : Full covered elegantly designed toilets with designer tiles and colour coordinated sanitary ware.
- **ELECTRICAL** : Concealed copper wiring with adequate number of electrical points & branded modular switches.
: TV point in drawing room & TV & AC Points in bedrooms.
- **KITCHEN** : Ready to use granite finished platform with SS sink. Designer glazed tiles with dado up to beam level.
: Plumbing and electrical provisions for water purifier & washing Machine. Kota stones self in store room.
- **DOORS** : Decorative wooden polished main entrance door with brass fitting and fixtures.
- **WINDOWS** : All other doors are flush doors, Fully / Galzed aluminum W/indows with stone revile.
- **TERRACE** : Open terrace finished with suitable water proofing with China - mosaic flooring for heat reflection.

PLEASE NOTES : Stamp Duty, Registration Charges, Legal Charges, GST, GUDA Charges & Ele. Co. Charges for Cable and sub-station Cost etc shall be borne by the purchaser • Any additional charges or duties levied by the Government / Local authorities during or after the completion of the project will be born by the purchaser • Changes / Alteration of any nature including the elevation, Exterior colour scheme of the building or any other change affecting the overall design concept and outlook of the project strictly NOT PERMITTED during or after the completion of the project • Membership of member will be cancelled automatically who will be unable to make payment in-time and deposited amount will be refunded only after new booking with 20% deduction of unit cost as an administration charges • This brochure is intended only for easy display and information of the scheme only.



F.P.No.12, Block No.15, Near Shantam Party Plot, B/H Pramukh Abode, Behind Nilkanth Mahadev Mandir, Vasna Hadmatiya, Gandhinagar – 382006.

DEVELOPERS



F.P.No. 12, Block No. 15, Near Shantam Party Plot,
B/H Pramukh Abode, Behind Nilkanth Mahadev Mandir,
Vasna Hadmatiya, Gandhinagar – 382006.

For more details
+91 9510555935



ARCHITECT

STRUCTURE

Spline Design
ARCHITECTS & INTERIOR DESIGNERS

Amee Associates
STRUCTURAL CONSULTANT

RERA REG. NO. :

Web : www.gujrera.gujarat.gov.in