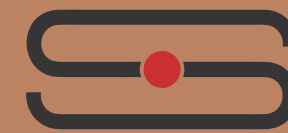


A PROJECT BY



**SHIVALA DEVELOPER**



A PROJECT BY



**SHIVALA DEVELOPER**

*Crafted For Peaceful Ambience*

**SHIVALA SADBHAV**

3 BHK LIVING SPACE | SHOPS

# SHIVALA SADBHAV

3 BHK LIVING SPACE | SHOPS

## WELCOME TO HOME

It is a world where exquisiteness radiates a feeling of warmth, comfort and happiness to foster peace and tranquility of mind. But most importantly it is a feeling of uniqueness that transcends above the general idea of lavishness.

It is also an environment of form space and design. Created to reflect the best in luxury living, for the privileged few.

Living at **SHIVALA SADBHAV**. You have the lifestyle of plush spaces, the advantage of best-in-class comforts and amenities.



**PRIDE**  
OF POSSESSION



**PEACE**  
OF MIND



**PLEASURE**  
OF LIVING



# SHIVALA SADBHAV

3 BHK LIVING SPACE | SHOPS

## MAKE THEM STOP AND STARE

Classy and sophisticated, **SHIVALA SADBHAV** is crafted for attention. The very premium and contemporary architecture unveils the luxuries that await you inside.

The 14 storeyed four towers cast lasting first impressions of ingenious design and impeccable quality. The simple interplay of glass and concrete emphasize the abundance of natural air and light. Created to be in timeless harmony with the surrounding the magnificent campus will simply make them **STOP AND STARE**.



This is not an actual image or photo

# DETAILS DO MATTER

We know that homes are made of more than just brick and mortar. They are made of dreams, love and a lifetime of longing. At **SHIVALA SADBHAV**, we go that extra mile to ensure that every inch of your prized possessions is of top quality.

Right from structural strength to aesthetic value, from planning to layouts, from finishes to fittings and fixtures everything is handpicked to be superlative in form and function.



This is not an actual image or photo

# SHIVALA SADBHAV

3 BHK LIVING SPACE | SHOPS



This is not an actual image or photo



This is not an actual image or photo

# THE LUSH OUTDOORS

Shivala Sadbhav is surrounded by nature all around. Now, your morning walk and evening meditation sessions can take place in the midst of lush green nature sprinkled with freshness.

A perfect balcony view that shall transform the lives of its residents and provide a refreshing change to your lifestyle.



This is not an actual image or photo

## SHIVALA **SADBHAV**

3 BHK LIVING SPACE | SHOPS

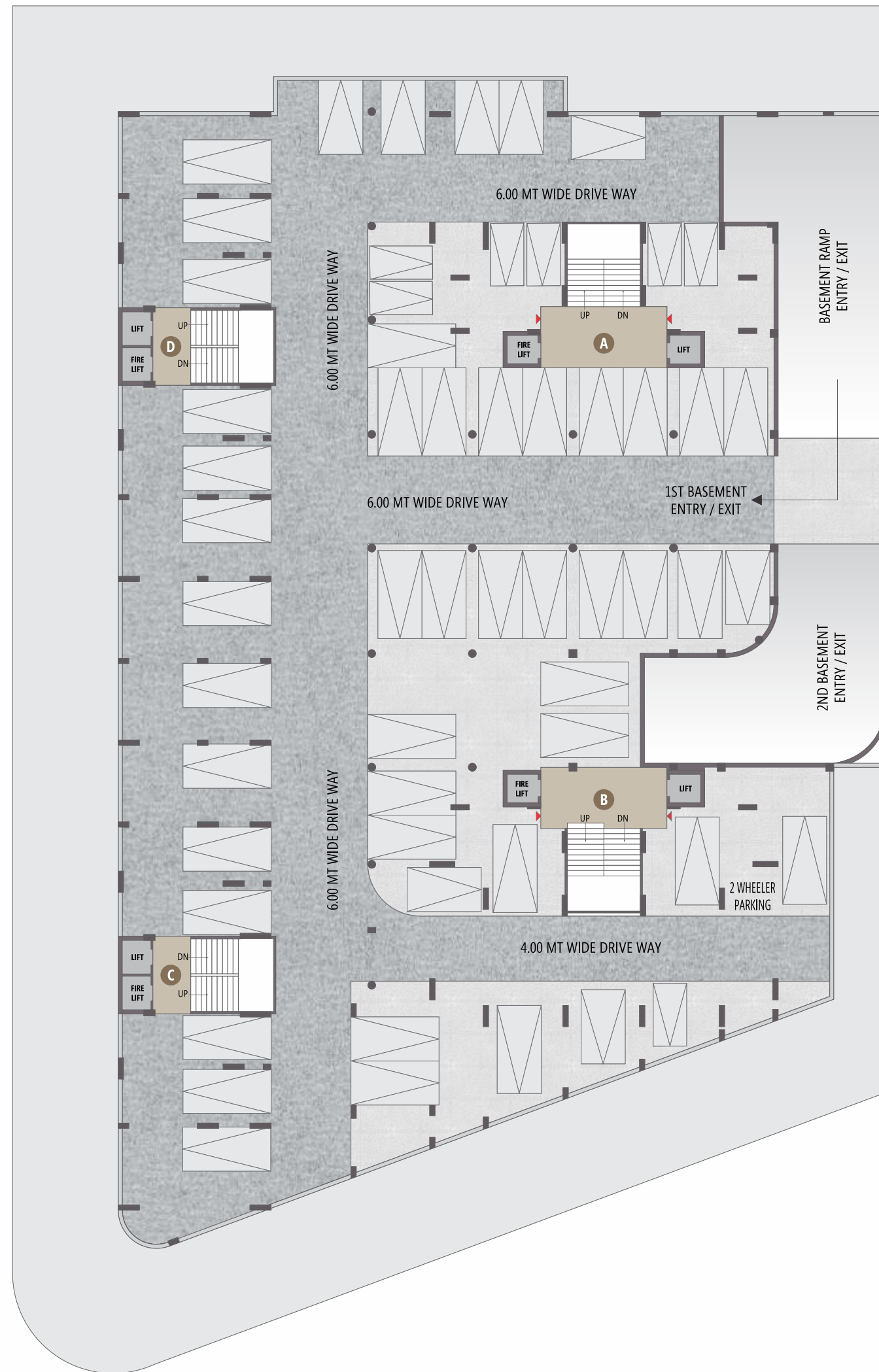


This is not an actual image or photo

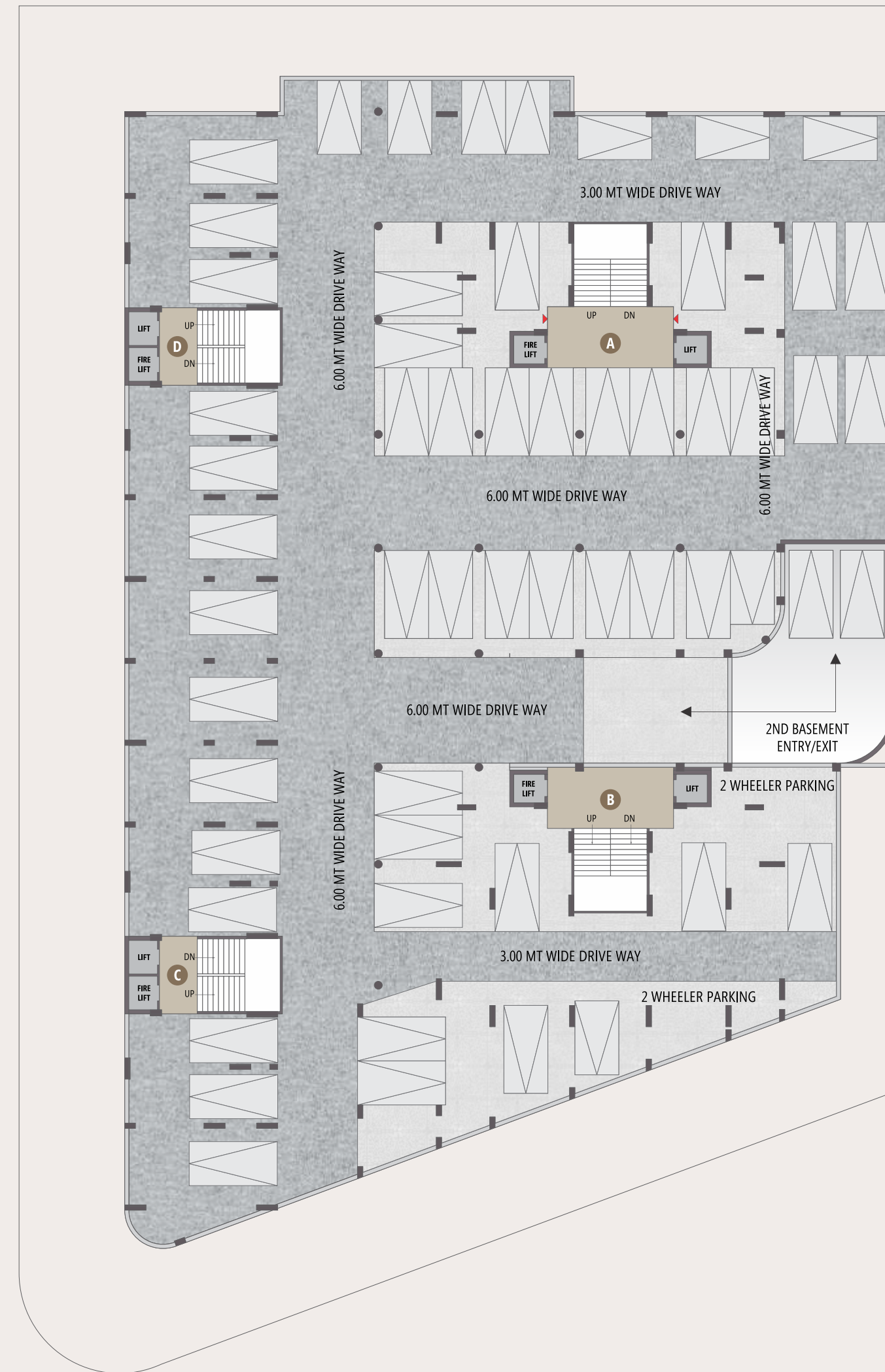


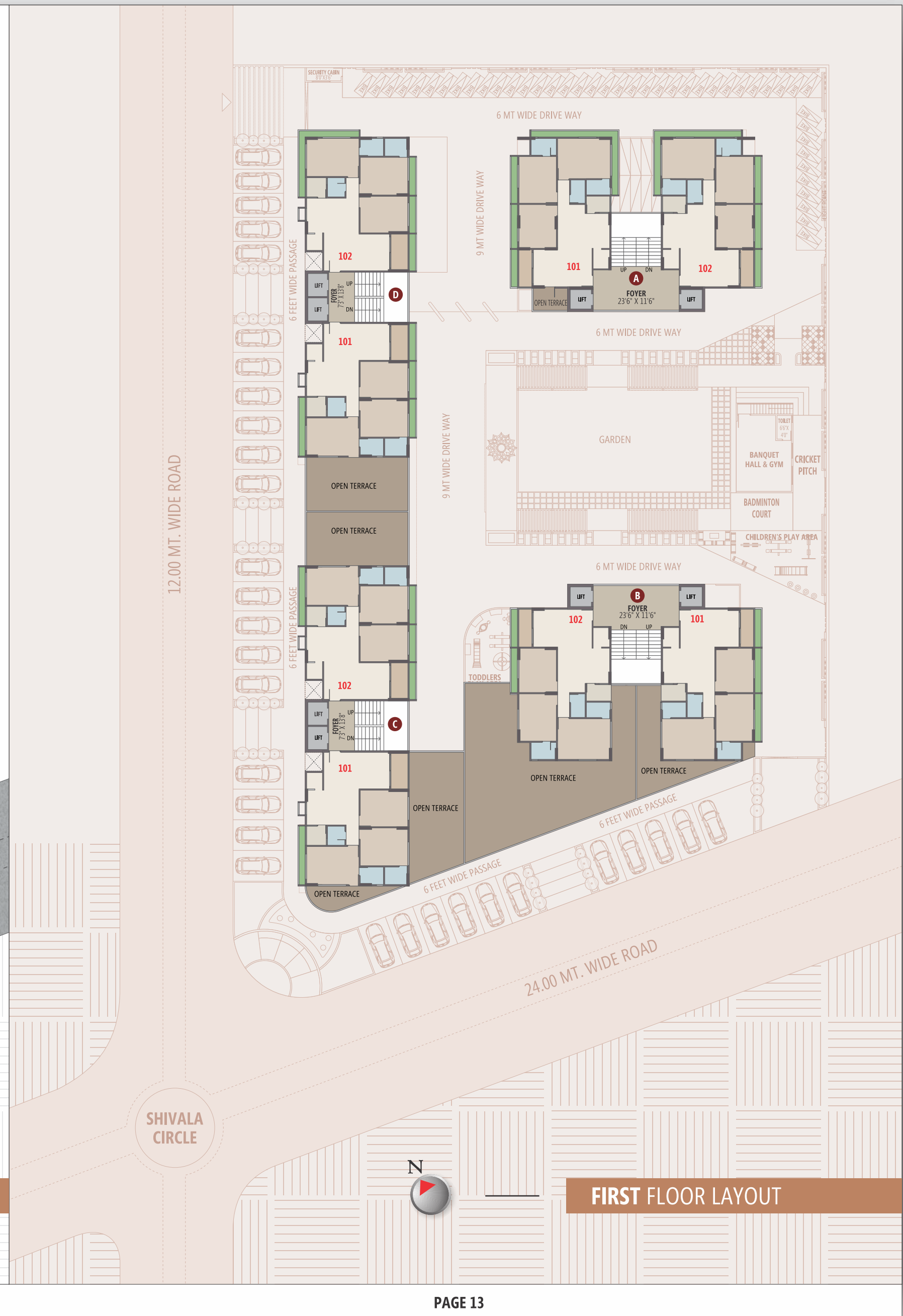
This is not an actual image or photo

FIRST BASEMENT PLAN



SECOND BASEMENT PLAN







SHIVALA CIRCLE



TYPICAL FLOOR LAYOUT

# SHIVALA SADBHAV

3 BHK LIVING SPACE | SHOPS

## SUPERIOR SIGNATURE OF NATURE

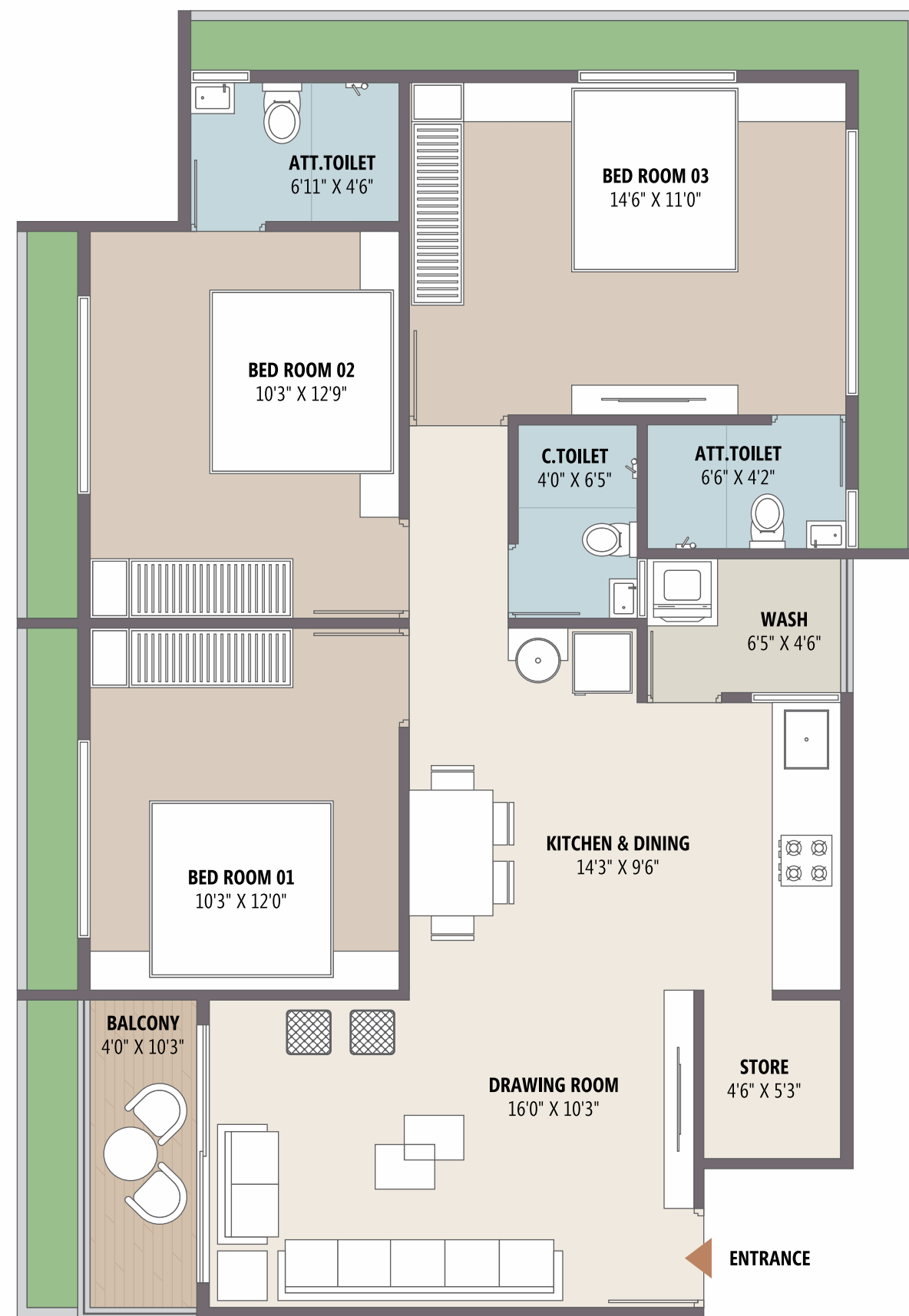
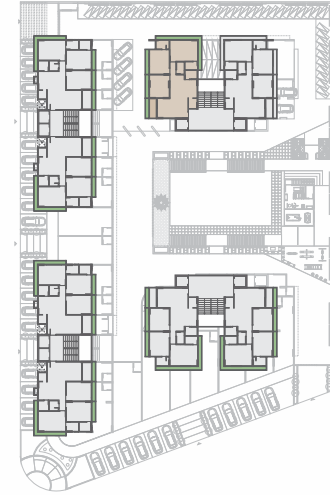
Amidst lush green legacies of nature and where you hear your mind think true **SHIVALA SADBHAV.**

Nothing short of picturesque beauty and dreams capes

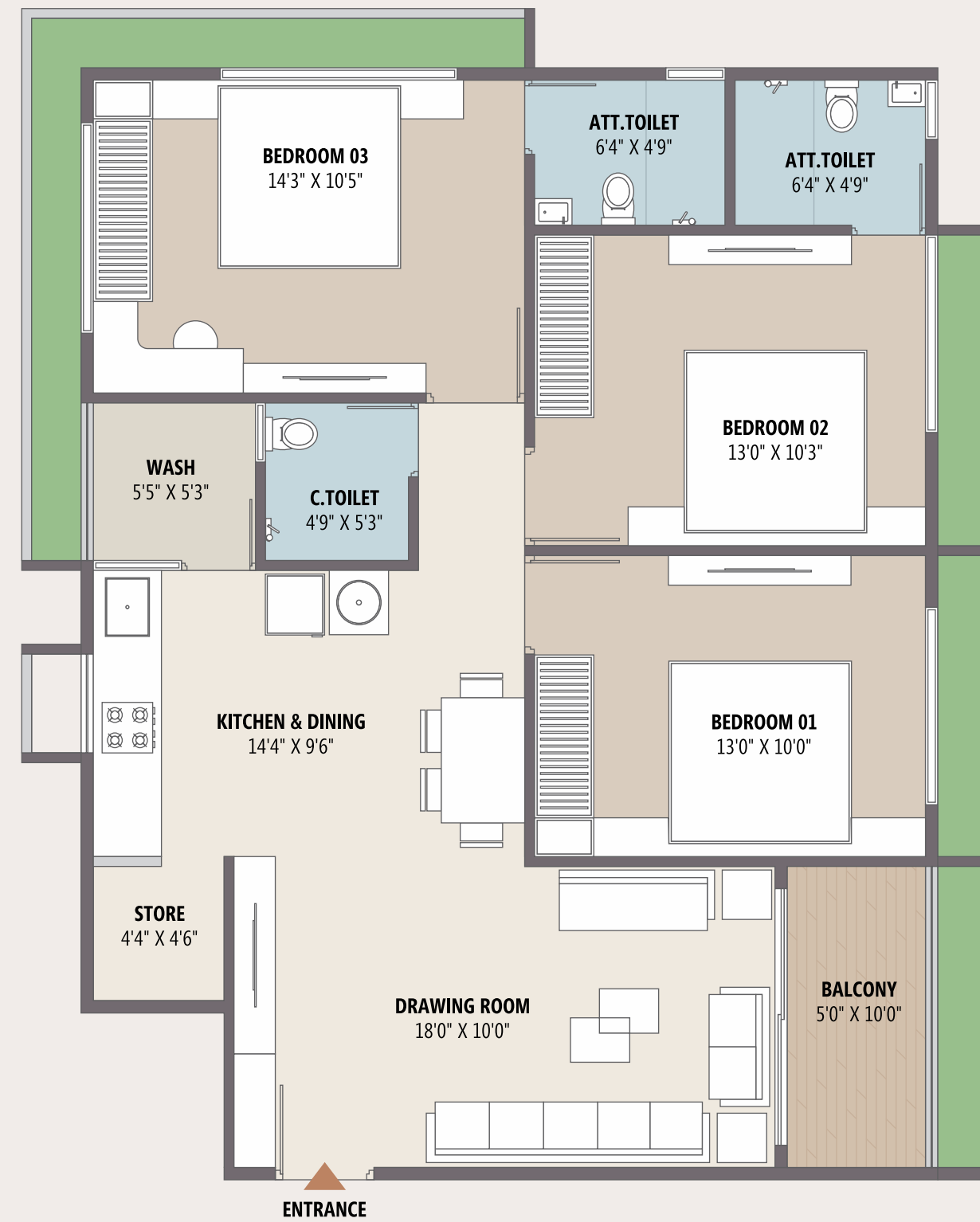
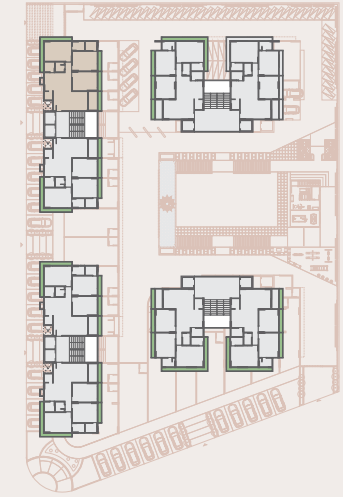




3 BHK | UNIT PLAN | TYPE - A & B



3 BHK | UNIT PLAN | TYPE - C & D





This is not an actual image or photo



This is not an actual image or photo

**SHIVALA SADBHAV**  
3 BHK LIVING SPACE | SHOPS

EXCEPTIONAL  
WARMTH  
ENORMOUS EMBRACE

An abundance of dreamlike  
privileges makes your  
living experience here like a fairy tale.  
It doesn't get more delightful than this.



This is not an actual image or photo



This is not an actual image or photo



This is not an actual image or photo



## WORK OUT THE BEST IN YOUR EVERYDAY

At the **SHIVALA SADBHAV**  
with the latest equipment find you spiritual filling with

- GYMNASIUM
- INDOOR GAMES
- YOGA / MEDITATION HALL
- LIBRARY
- CO-WORKING SPACE
- BANQUET HALL
- TEMPLE
- FOYER AREA
- TERRACE GARDEN
- KIDS PLAY AREA
- TODDLER PLAY AREA
- BOX CRICKET PITCH
- BADMINTON COURT
- LANDSCAPE GARDEN WITH PLANTATION
- GAZEBO WITH SEATING
- WALKING TRACK
- WATER BODY
- VIDEO DOOR BELL
- INTERCOM SYSTEM
- SENSOR BARRIER GATE
- CCTV SURVEILLANCE
- FIRE SAFETY



# SHIVALA SADBHAV

3 BHK LIVING SPACE | SHOPS

## IN THE HEART OF EVERYTHING

Imagine a space so connected that you will rarely feel like you are away from home. A world that is so central that it will become the hub of cosmopolitan living.

## SPECIFICATION

### FLOORING

Vitrified tiles in all entire area.

### WALL FINISH / ELEVATION

Internal Mala plaster with white finished birla putty.  
Attractive external elevation with texture finished with Acrylic paints.

### DOOR & WINDOWS

Decorative main door and internal flush door / aluminium section windows.

### KITCHEN

Mirror polished granite platform with standard sink & designer tiles in platform wall area.

### ELECTRIFICATION

Three phase concealed copper standard wiring with modular switches and adequate number of points. MCB distribution panel in each unit

### PLUMBING

Standard CPVC and UPVC pipes fittings of standard company.  
PVC & SWR pipes for solid waste and standard C.P. fittings and Sanitaryware.

### TOILET

Designer tiles in floor and wall tiles upto lintel level.  
Geyser point and exhaust point in each bathrooms.

### TERRACE :

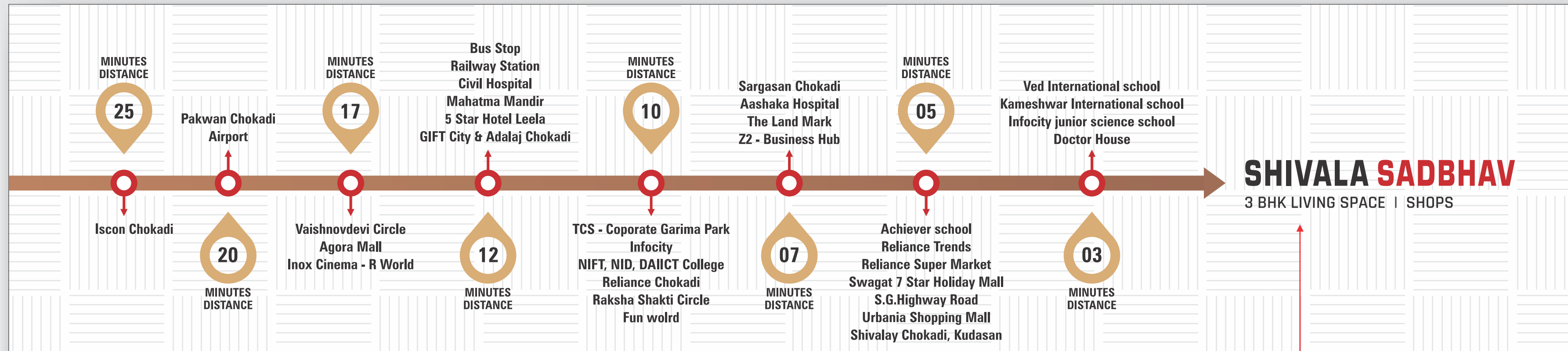
China mosaic on terrace for heat reflection.

### WATER SUPPLY

24 Hrs. water supply with necessary pressure system.



This is not an actual image or photo



**SHIVALA SADBHAV**  
3 BHK LIVING SPACE | SHOPS

Site Address :  
**SHIVALA DEVELOPERS**  
 Sr. No.194/1/001 + 114/2  
 F.P. No.68 & 69,  
 Nr. Shreerang Nano City, Thakkar's Farm Road, Sargasan - Kudasan Road,  
 Sargasan, Gandhinagar, Gujarat-382421.

Contact : **99090 11291, 8160673940**

REG. RERA NO. :  
 PR/GJ/GANDHINAGAR/GANDHINAGAR/Gandhinagar Municipal Corporation/MN66AA09966/070622  
 Website: [www.gujrera.gujarat.gov.in](http://www.gujrera.gujarat.gov.in)

A Project By :  
  
**SHIVALA DEVELOPER**

Architect  <b>AGA</b> Akash Gajjar 90990 34875	Structural Engineer  <b>S&amp;S</b> SHAH & SANGHVI ASSOCIATES	Mep Consultant  <b>TORQUE</b> ELECTRICAL Jignesh Patel
--	--	--

- Commencement and timely execution of the project is subject to all necessary approvals from relevant govt. authorities, occurrence of natural calamities or any other external beyond developer's control. • The dimensions shown in the brochure are approximate.
- The developer reserves the right to change, revise or make any modification, addition, omission or alteration in the scheme as a whole or part thereof, at their sole discretion.
- The brochure is only for illustration & private circulation purpose & is not a legal document or a binding one. • Government levies like stamp duty, registration charges, legal charges, GST and other additional charges are to be borne by the member. • Subject to Gandhinagar Jurisdiction. • Payment in favour of "SHIVALA DEVELOPER"

