

DE

DILIP EXOTICA

Live the Contemporary Life

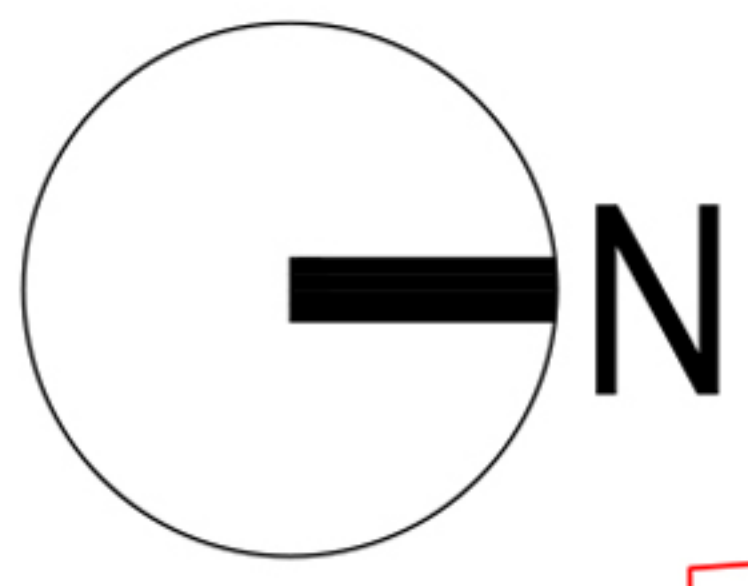


3BHK LUXURIOUS APARTMENTS

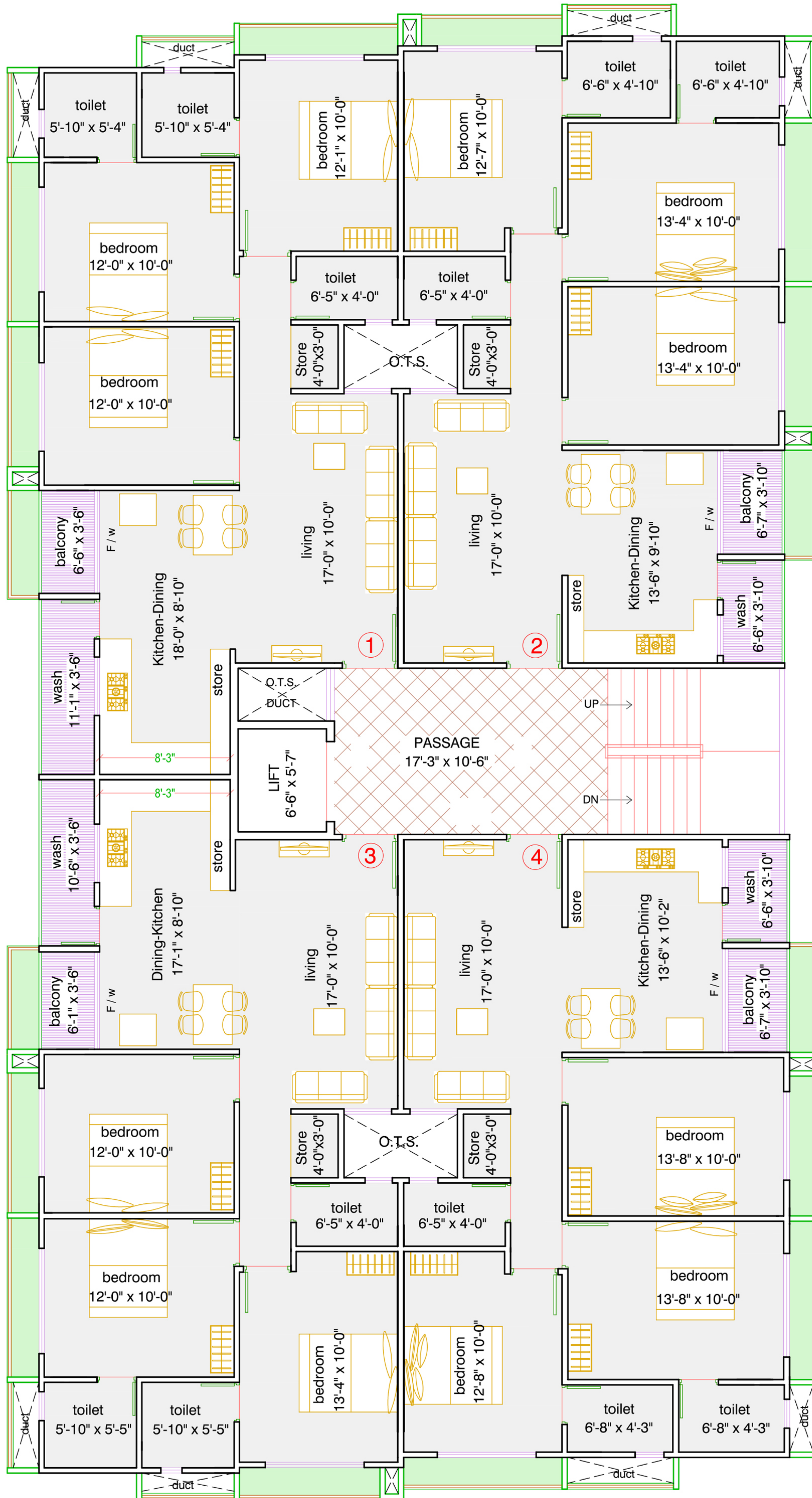


living in luxurious
lifestyle



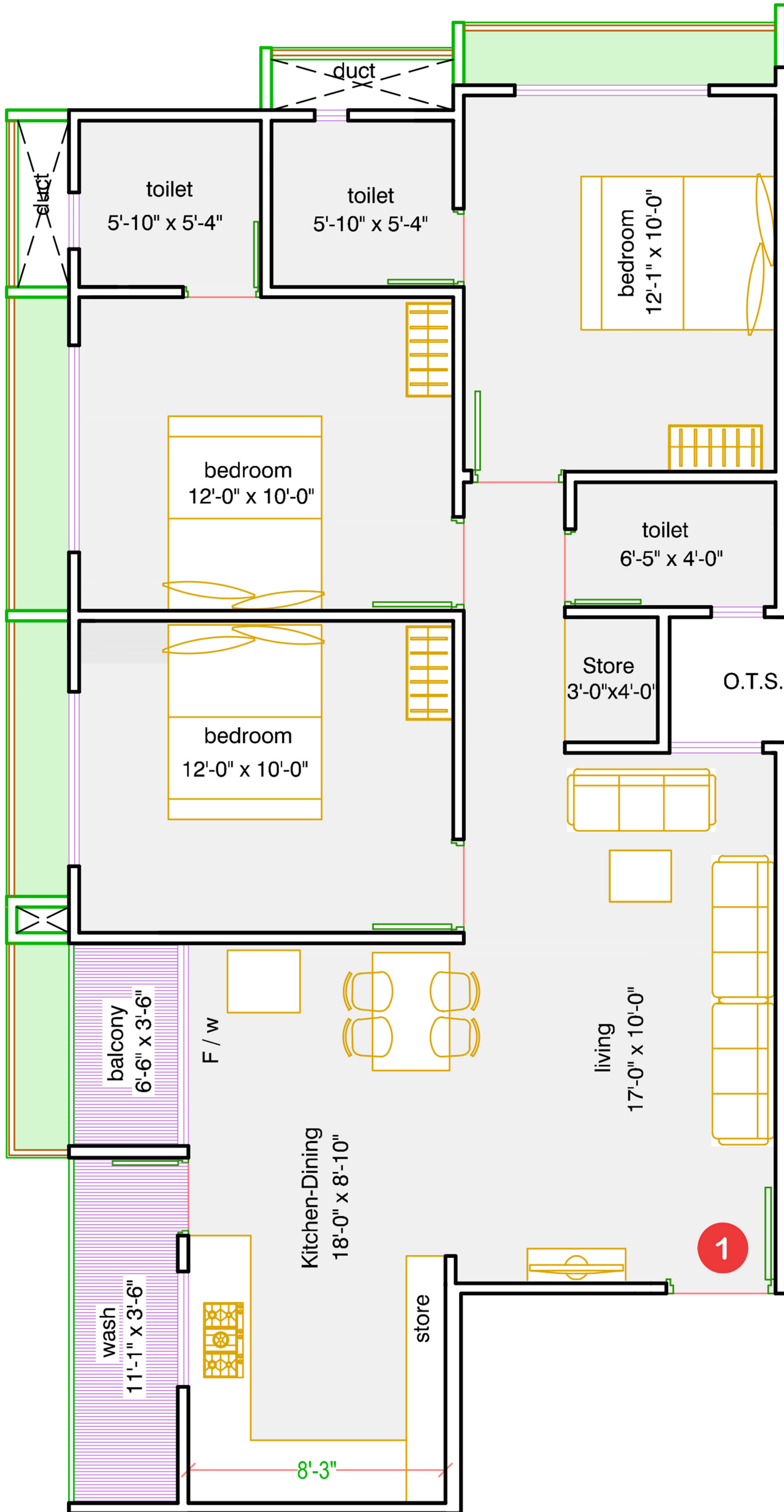


TYPICAL floor plan

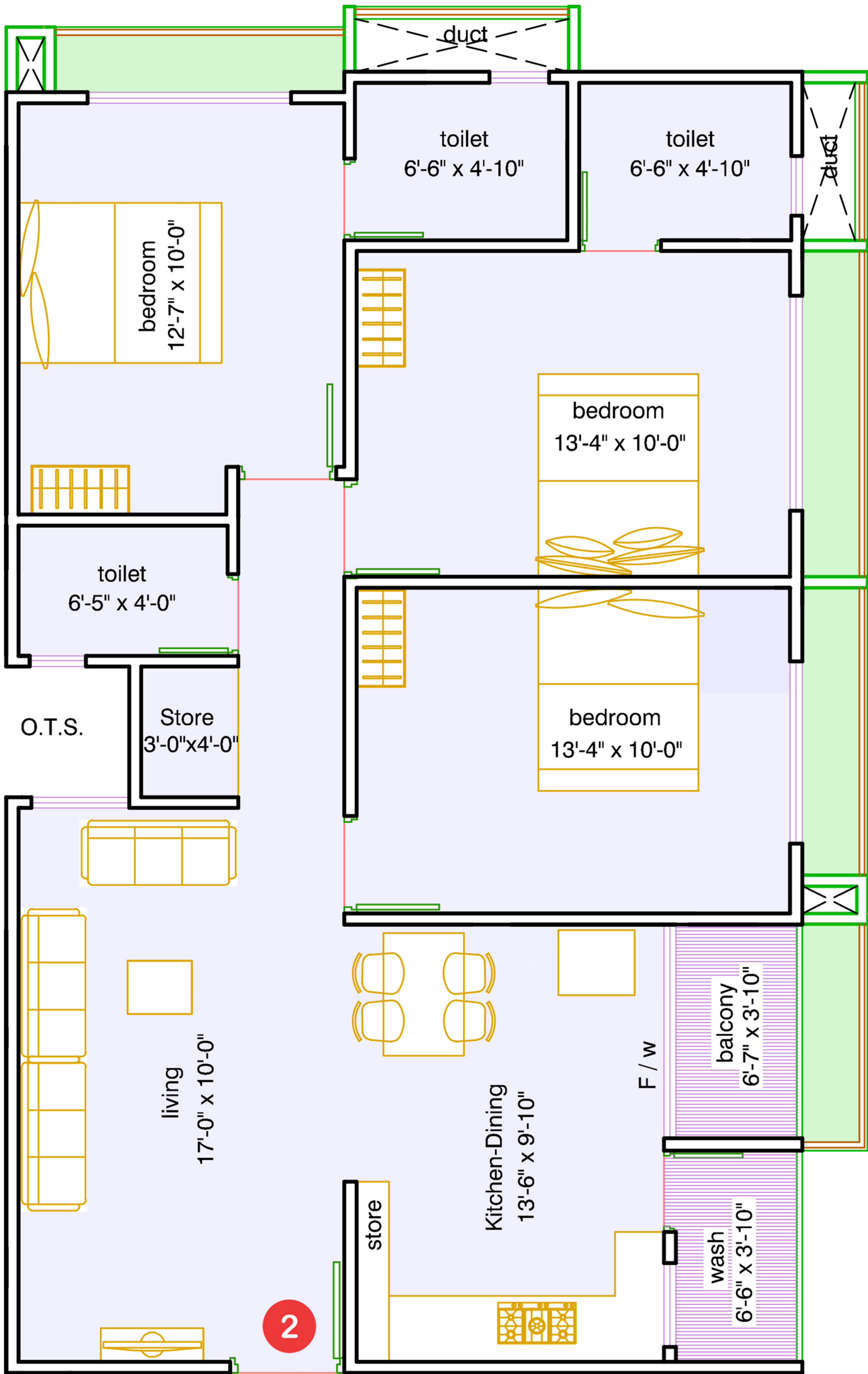


← 9.15 mt wide Road →

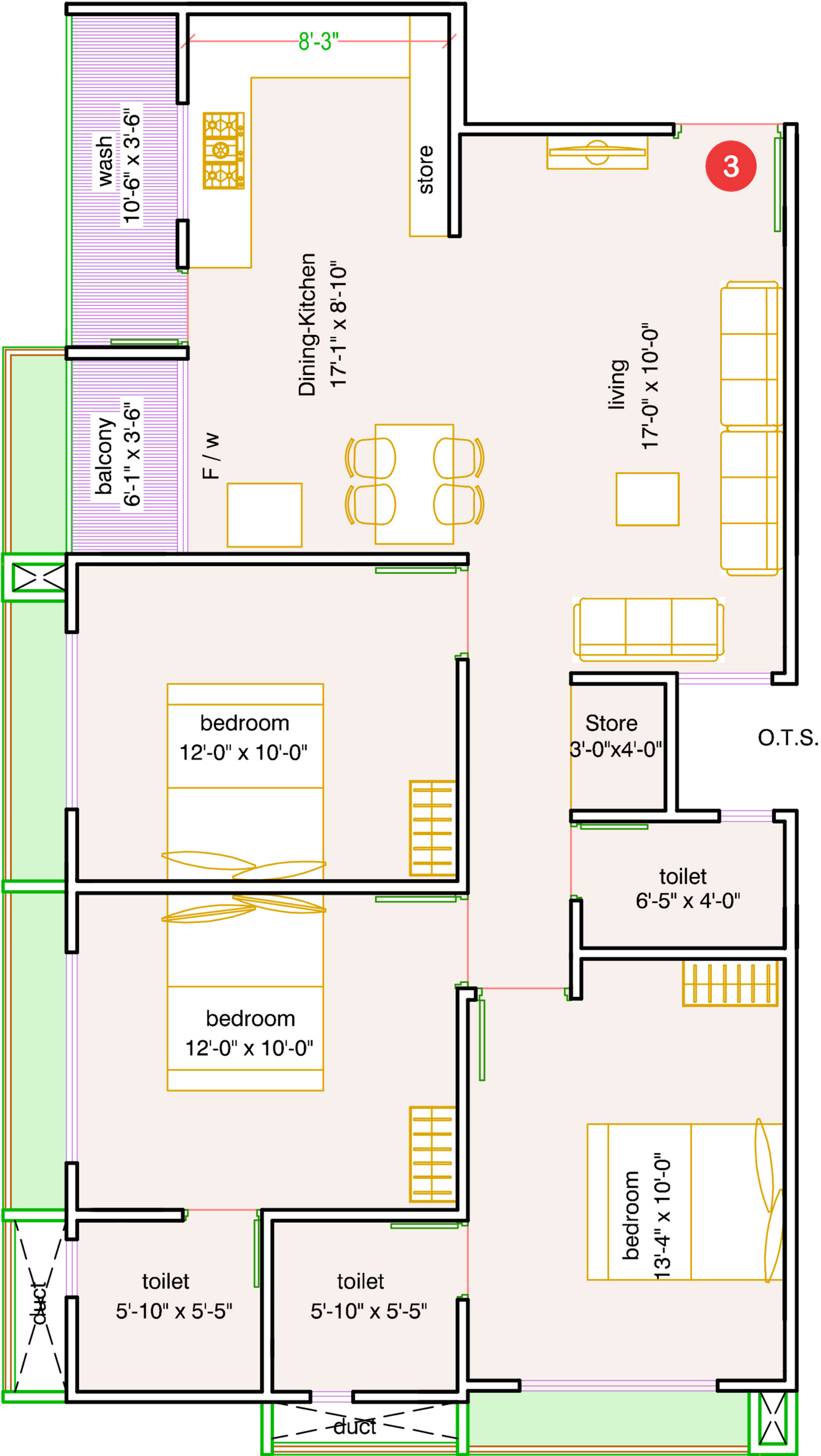
3BHK UNIT PLAN



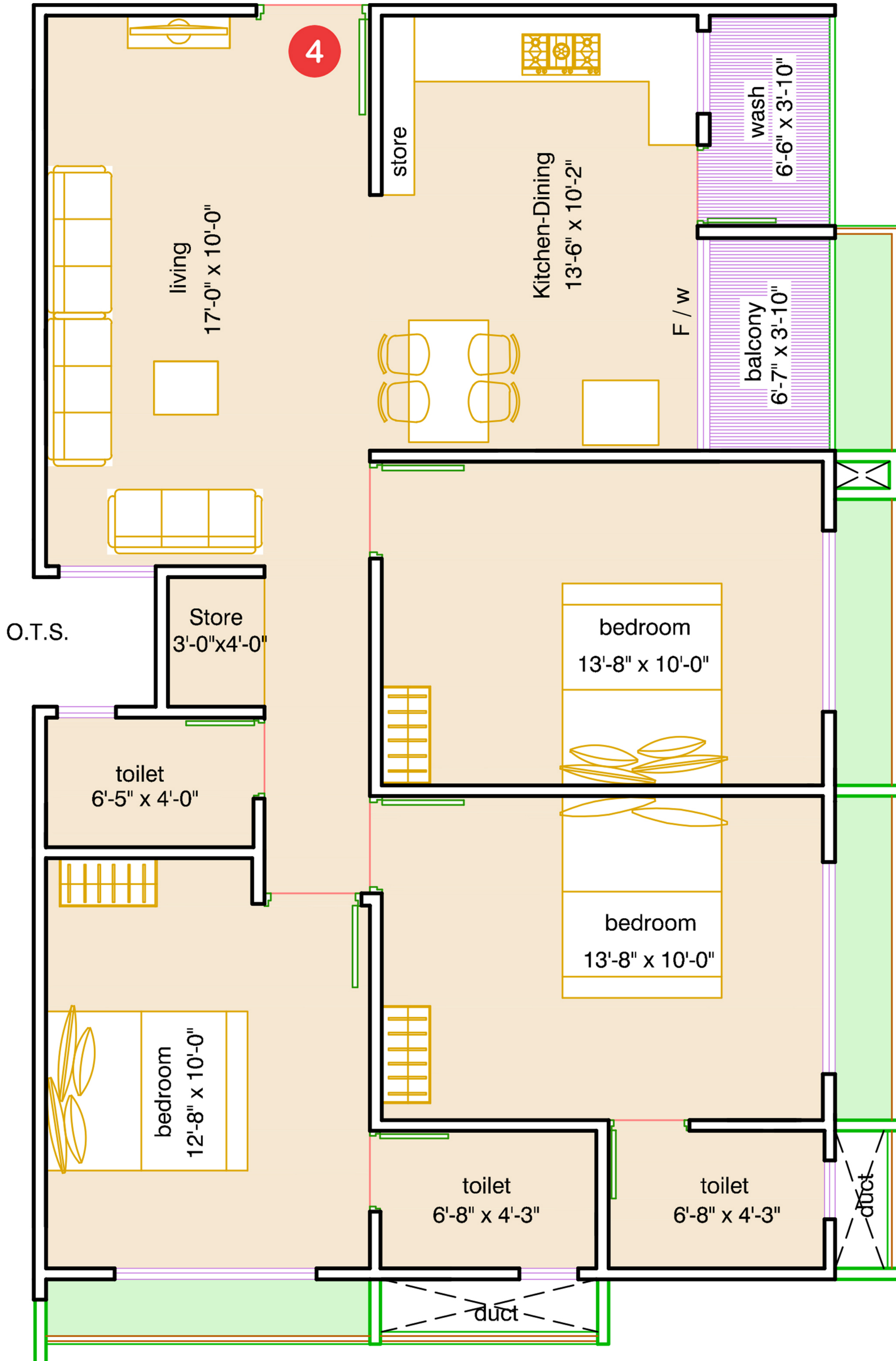
3BHK UNIT PLAN



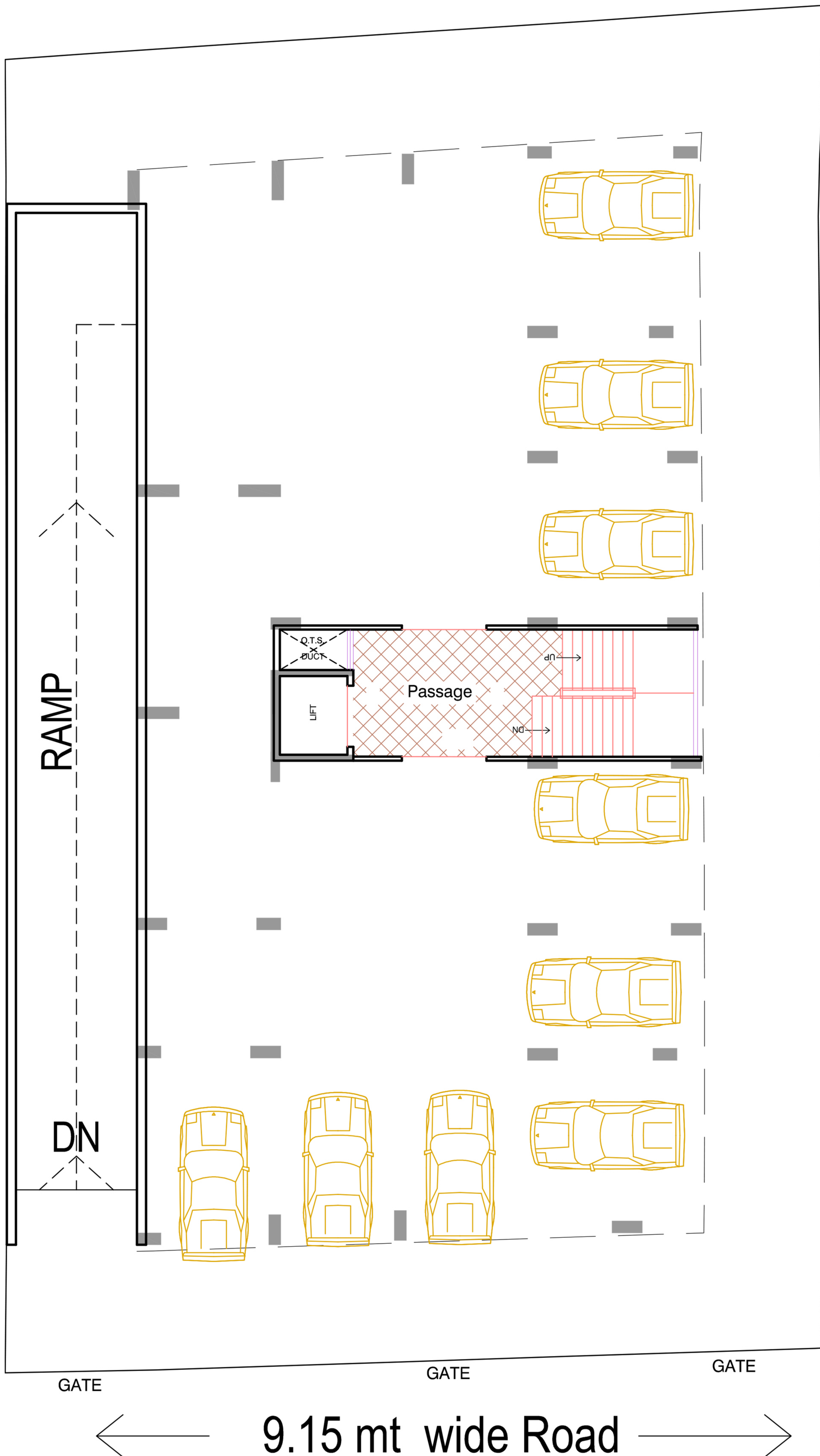
3BHK UNIT PLAN



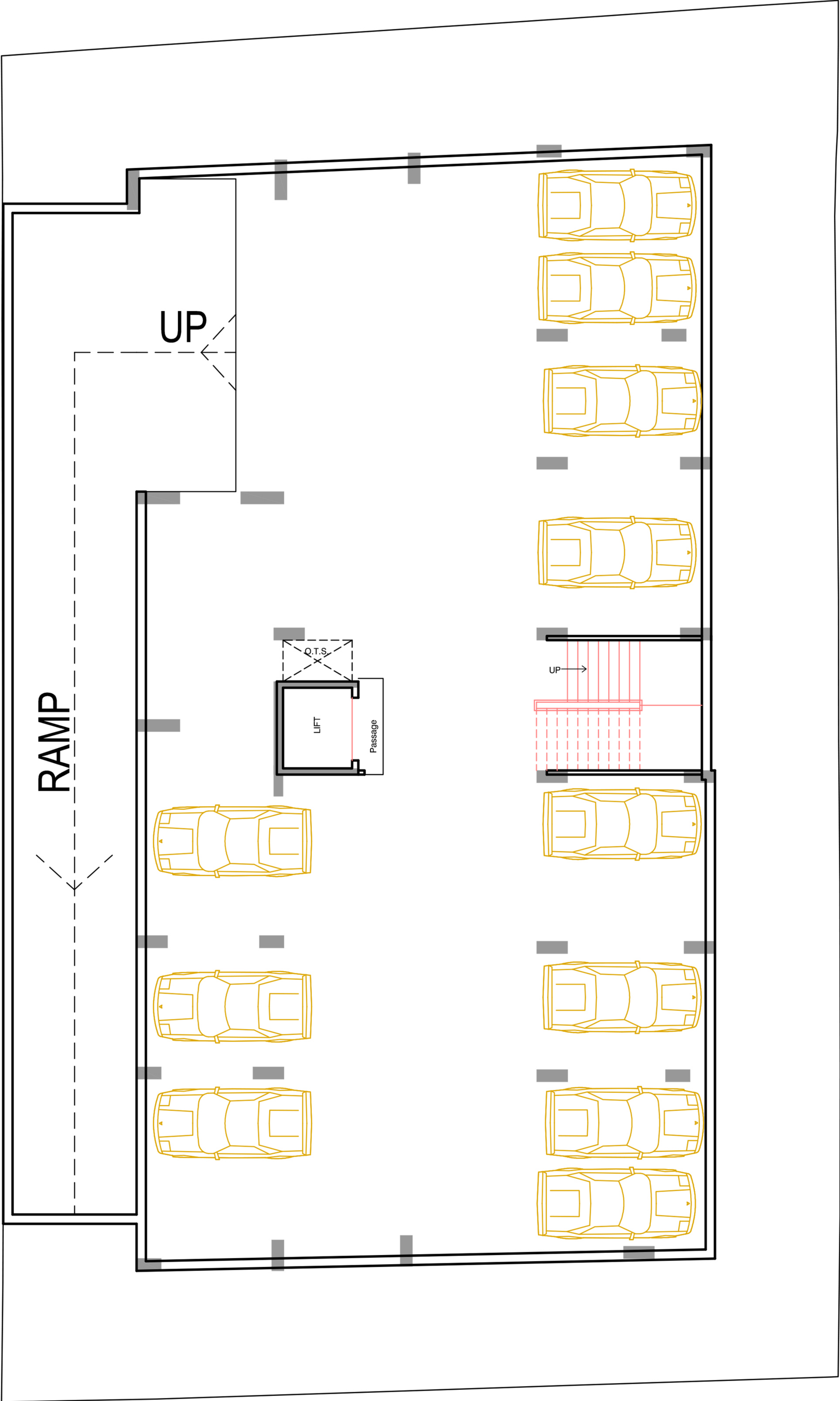
3BHK UNIT PLAN



GROUND FLOOR PARKING



BASEMENT PARKING



← 9.15 mt wide Road →



Gateway to bigger
better and beautiful
living space

Everybody happy
everyone has a room



APARTMENT FEATURES



Structure

- Earth-Quack Resistance for zone - I R.C.C. Frame structure
- CC Retaining Wall at Basement Level
- Light Weight Concrete Blocks (Eco Bricks) or Bricks for all walls



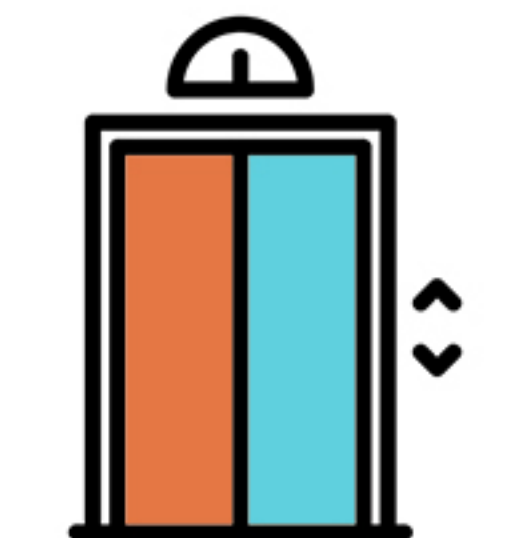
Entrance & Foyer

- Decorative Entry Gate with Security cabin.
- Designer Compound wall with decorative Light Fixers.
- Decorative Entrance Foyer.
- Staircase with Marble Stone / Granite



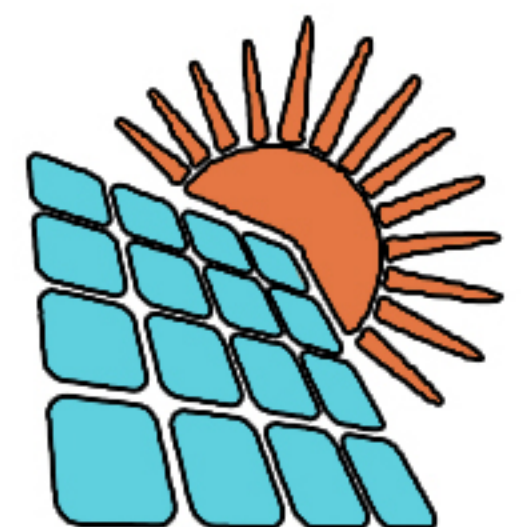
Parking

- Parking: Tiles or Rough Kota Stone
- One free Allotted Car Parking to each flat at Ground Level or Basement
- Common Toilet for Security, Driver, Sweeper etc.
- Car/Wash Facility / Common Car wash Area
- Seating Arrangement at Entry Foyer
- Charging point for Electric Vehical at Parking Area



Elevator

- 6 Person Capacity Hi speed Lift



Terrace Development

- Black Granite Mirror Polish Platform with S. S. Sink
- Artificial Garden Area with seating provision
- Providing solar panel for saving common Electric Power



Security Provision

- Round the Clock Security by Professional Agency
- 24X7 CCTV Surveillance at Main Entrance Gate, Basement Entry, Lift and Exit



Water Supply

- Corporation & Back-up Bore-well Supply up to 350 Rft
- Percolation well
- Underground Water Tank 50,000 liter capacity with inside Tiled
- Overhead Water Tank 10,000 Liter capacity with Inside Tiled
- Automation System for Under Ground and Overhead Water Tank.
- Submersible Pump and motor for overhead water Lifting



Paint & Finish

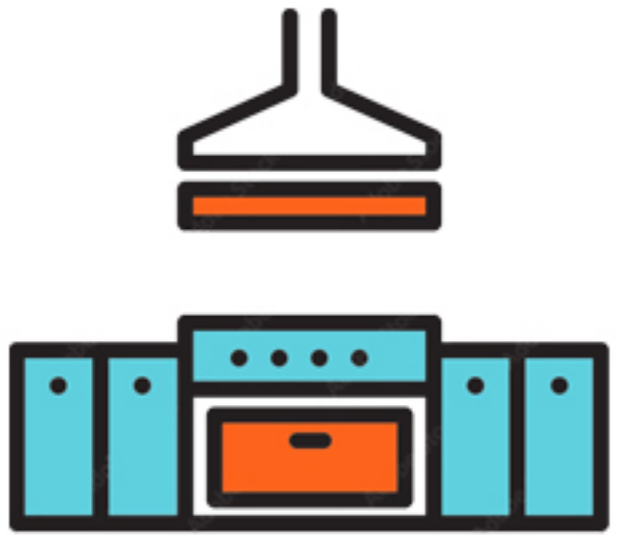
- External : Double Coat Plaster with Texture / Acrylic Paint Nerolac, Asian or Equivalent

PROJECT HIGHLIGHTS



Flooring

- 39" X 39" Double Charged Vitrified tiles in Drawing room
- 24" X24" in other rooms



Kitchen

- Telephonic Black Granite Mirror Polish Kitchen Platform with S.S sink
- Kota Stone in Wash Area with Washing Machine point
- Electronic chimney provision
- Provide ADANI PNG Connection



Bathroom & Toilet

- Designer Tiles for Flooring & Dado up to Lintel Level
- Designer Range of Vessels & Faucets: Cera
- High Quality Plumbing Fixture : Jaquar hot & cold water supply line with CPVC pipes of ASTRAL
- WallHung EWC with Flush Tank or Flush Cock
- Provide ADANI PNG Connection in one toilet
- Common gas geyser point



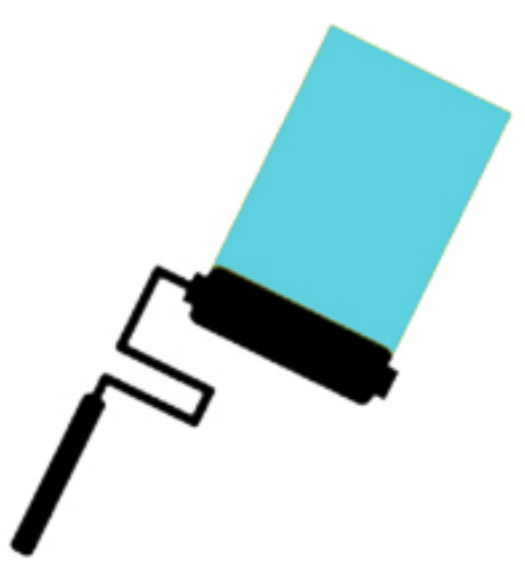
Door & Window

- Entrance Door : 35mm Thick Veneer Flush Door with Quality Lock set : EUROPA/GODREJ
- Internal Door : 32mm Thick with Oil Paint colour
- Anodized Aluminum Glass Sliding Window with Stone Revil Granite



Electric Work

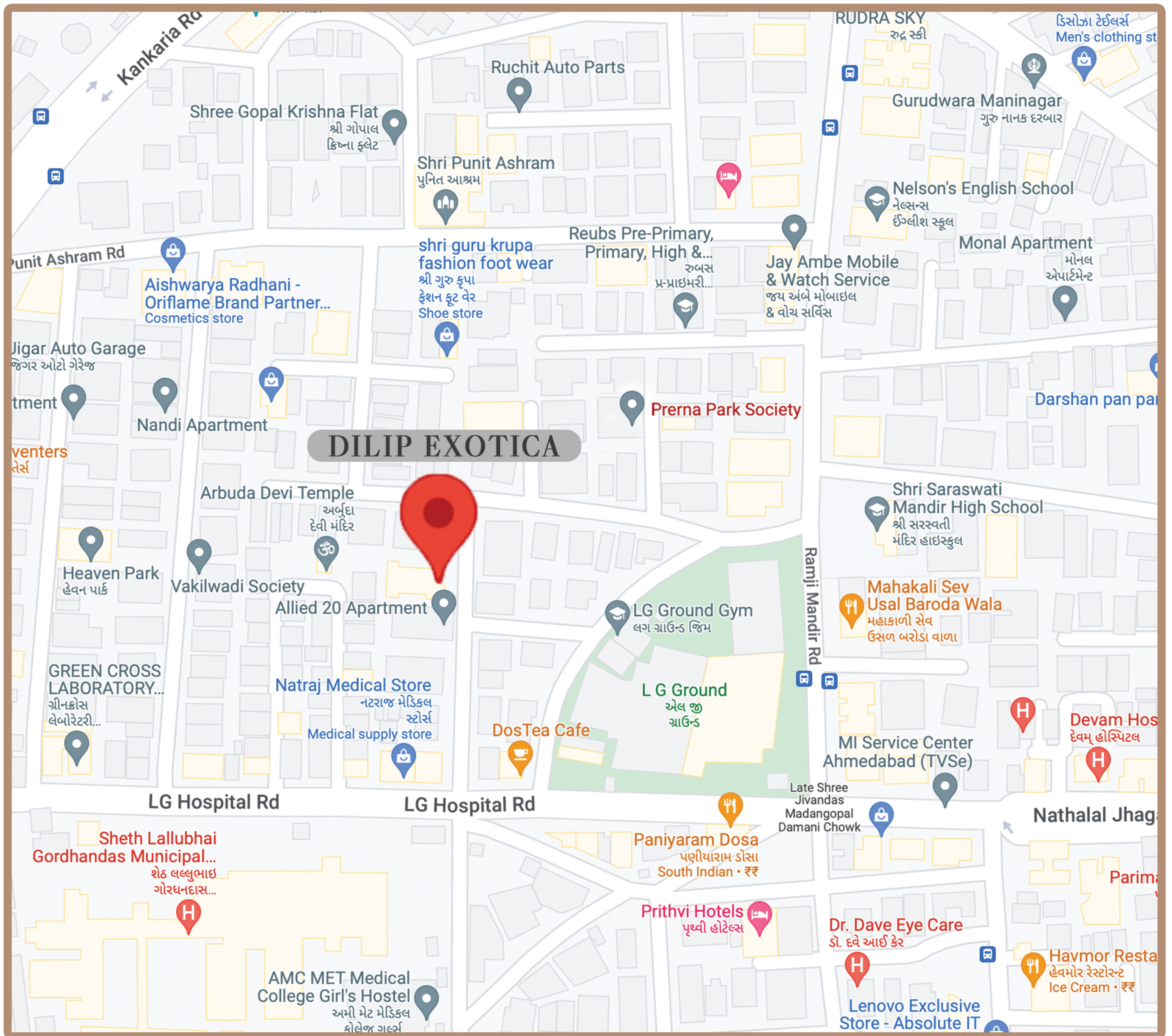
- 3-Phase Concealed Conduits with Copper Wiring : Finolex / R. R. Cabel Or Equivalent Brand
- Video Doorbell at Main Entry door.
- Modular Switches & Switch Board : Anchor / Northwest
- Provision for TV/Cable and Telephonic Point in all Rooms
- Protective MCB/ELCB for all Sockets : Indo Asian / C& S
- Switches : Anchor / Northwest or Equivalent
- Air Conditioner points in all Rooms with provision of separate drain water line.
- Adequate Number of Electrical Points



Paint & Finish

- Internal : Single Coat Mala Plaster with Birla White Putty Finish

Location and Connectivity



Site Address

Dilip Exotica, Prerna Park, Opp. L G. Hospital
.Maninagar, Ahmedabad-380008.

DEVELOPERS



+91 9825445668 ● +91 9825723855

Architect

GLORIOUS ARCHITECTS

Structure

