

LIVING
MöminSara
THE LAND IS FLOURISHING



IT IS TIME TO
HAVE YOUR
HOUSE

For Inquiry

+91 9913174482 | +91 9913354482

info@mominsara.com

www.mominsara.com

WHO WE ARE

Mominsara Living is a Stellar representation of evolution. Located in the lush green area of Sarkhej, these modern 2 & 3 BHK apartments are close to the S.G. Highway. Mominsara living affordable amenities you need to take a break from your busy lifestyle. Experience the benefits of modern amenities for your residence with Mominsara Living in the fastest growing area of the city.

49
FLATS

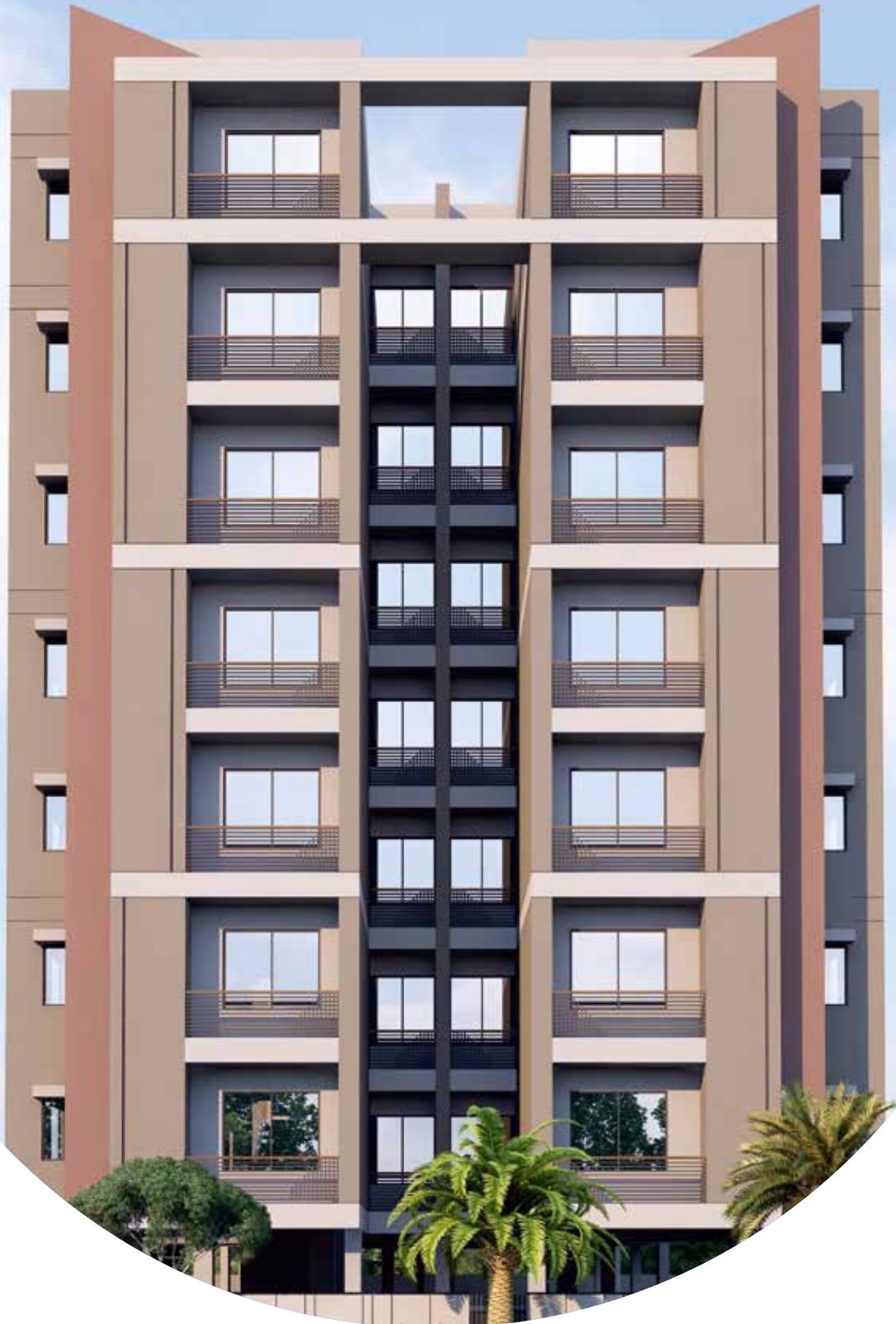
21
2BHK

28
3BHK





“THERE IS NO PLACE LIKE
HOME”

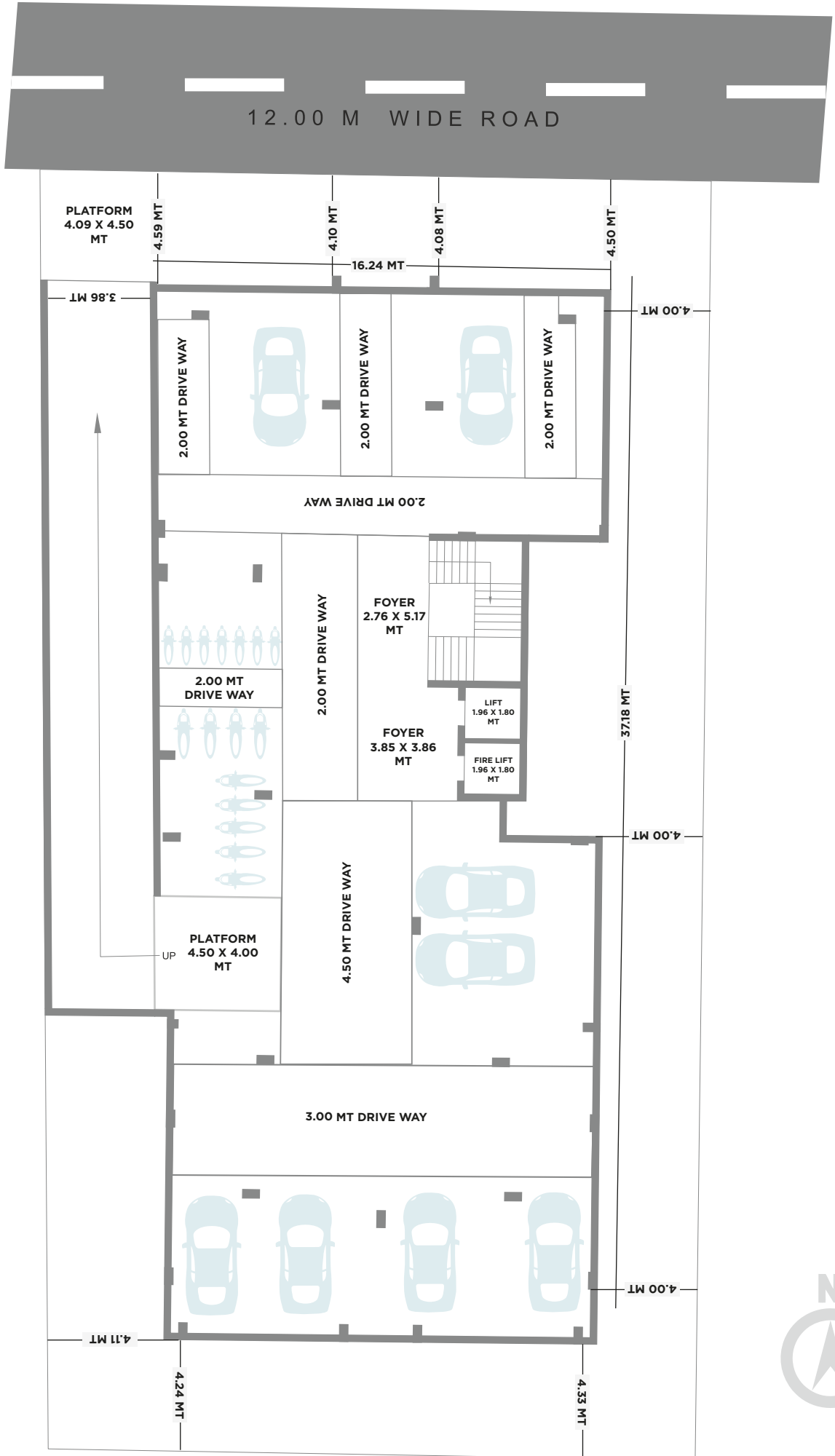


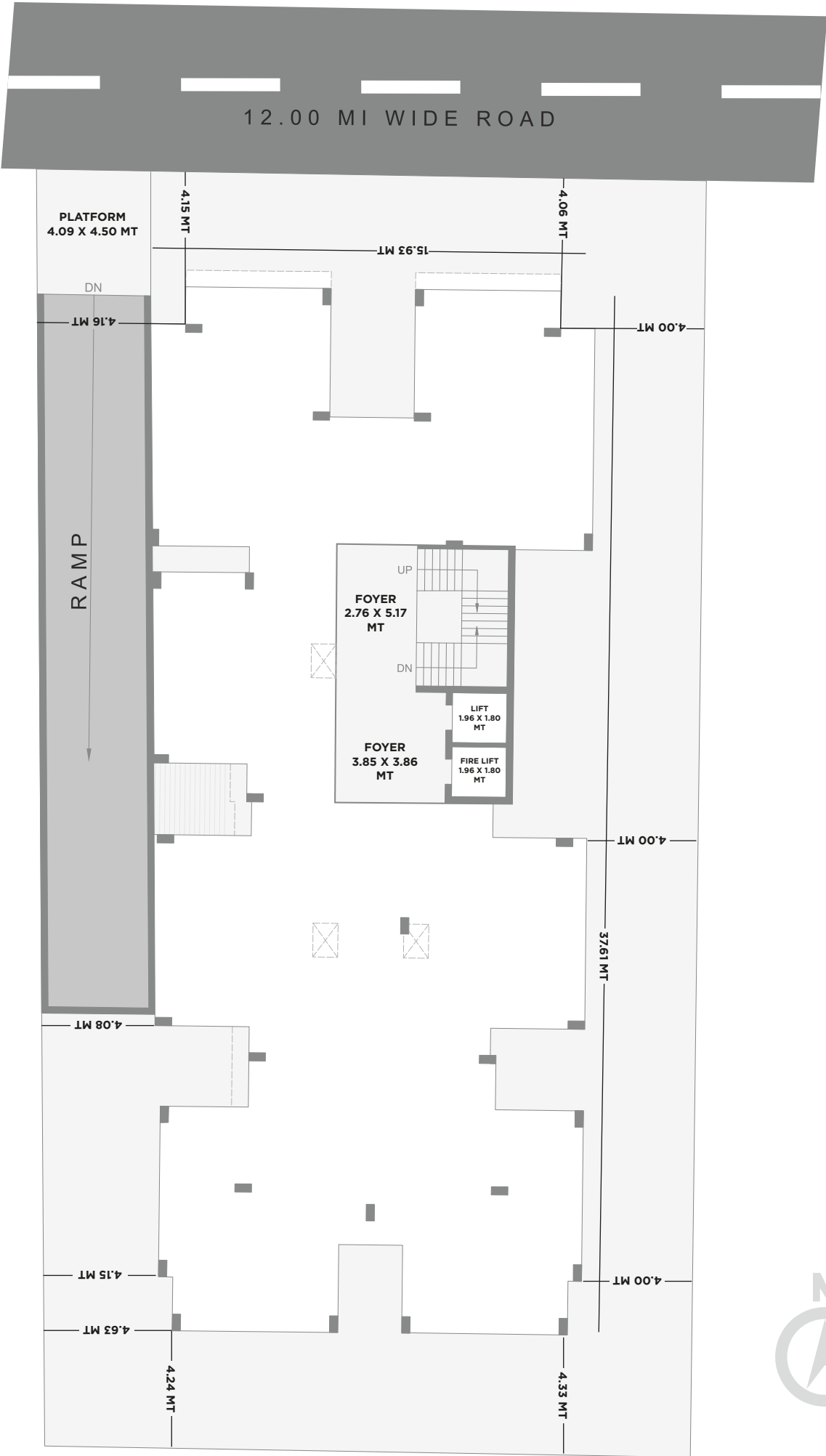
TYPICAL FLOOR PLAN

1ST TO 7TH FLOOR



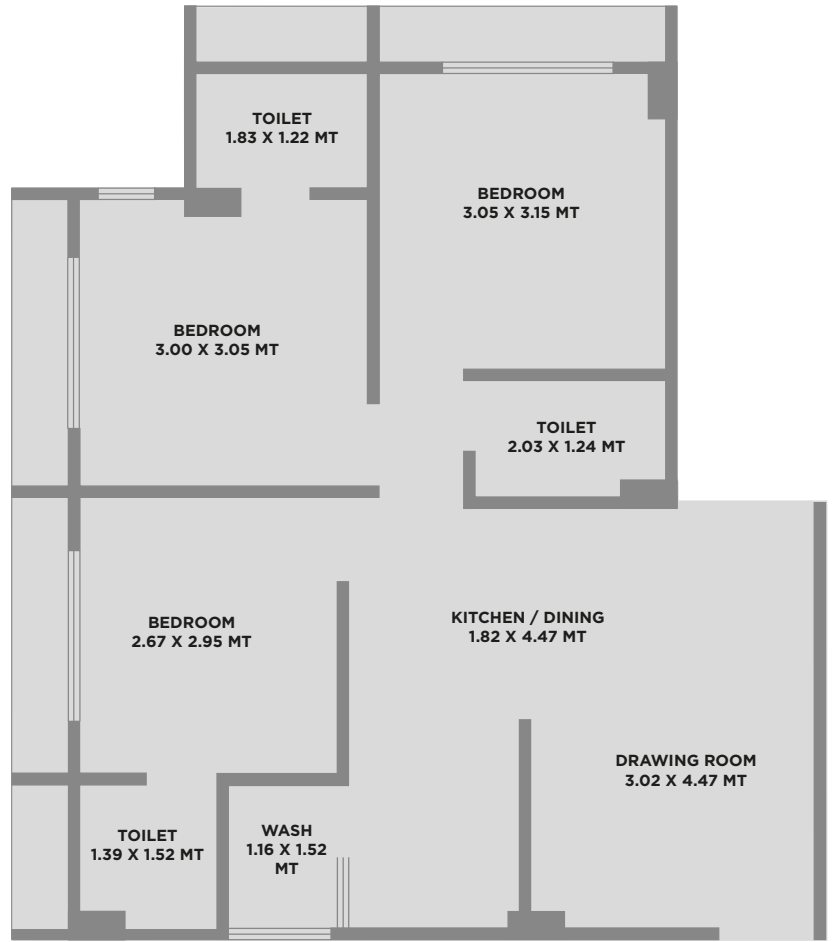
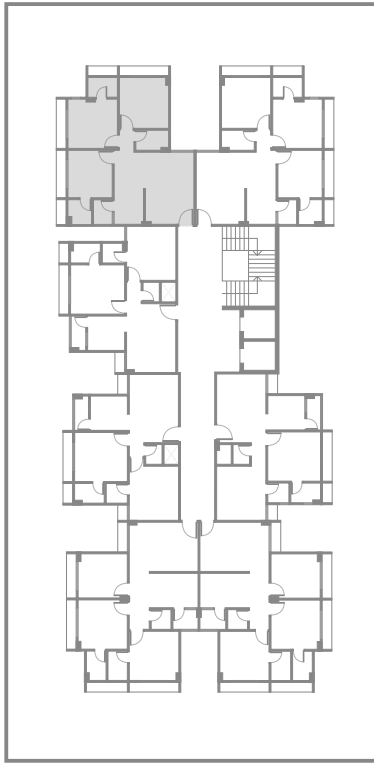
BASEMENT PLAN





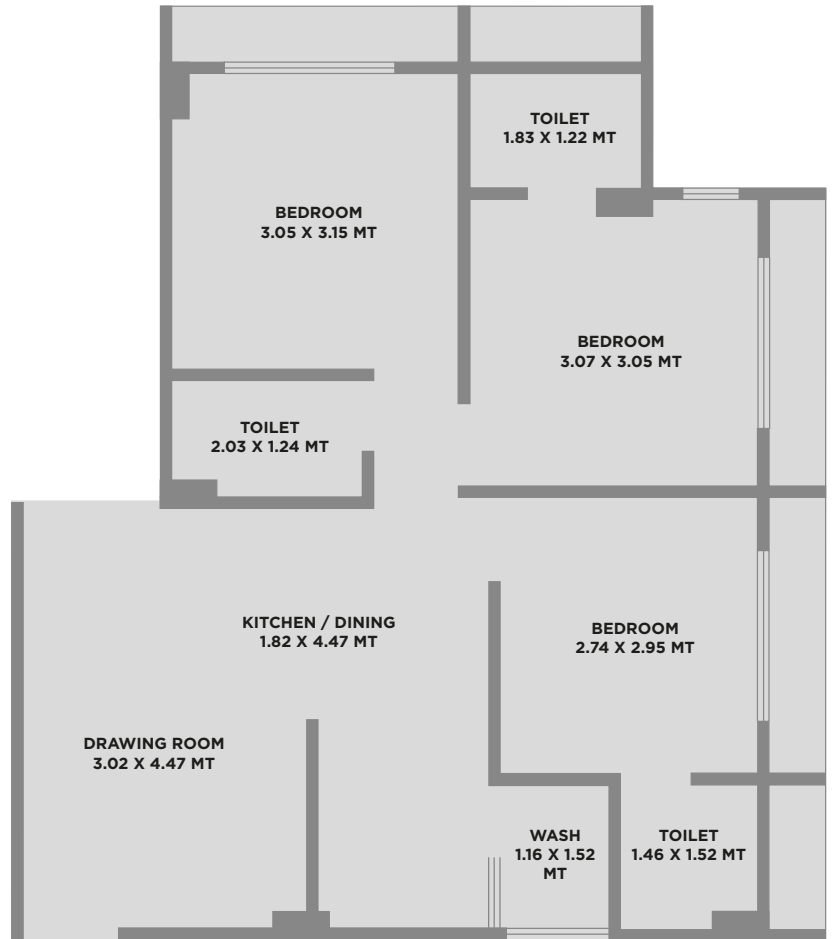
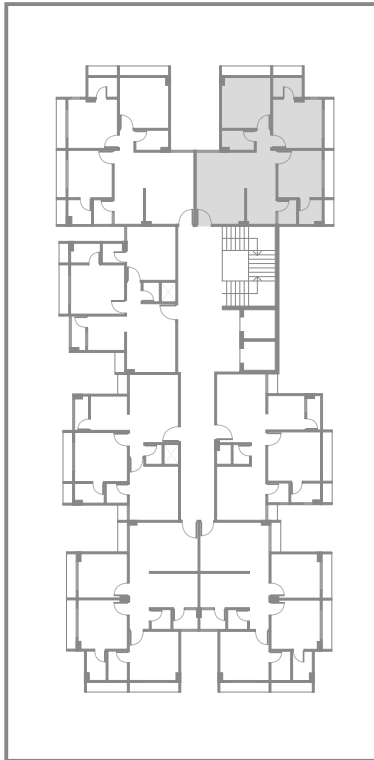
3 BHK PLAN FRONT

FLAT 106 TO 706



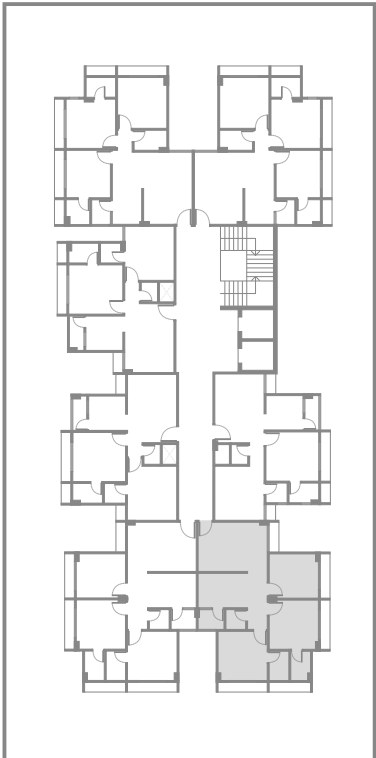
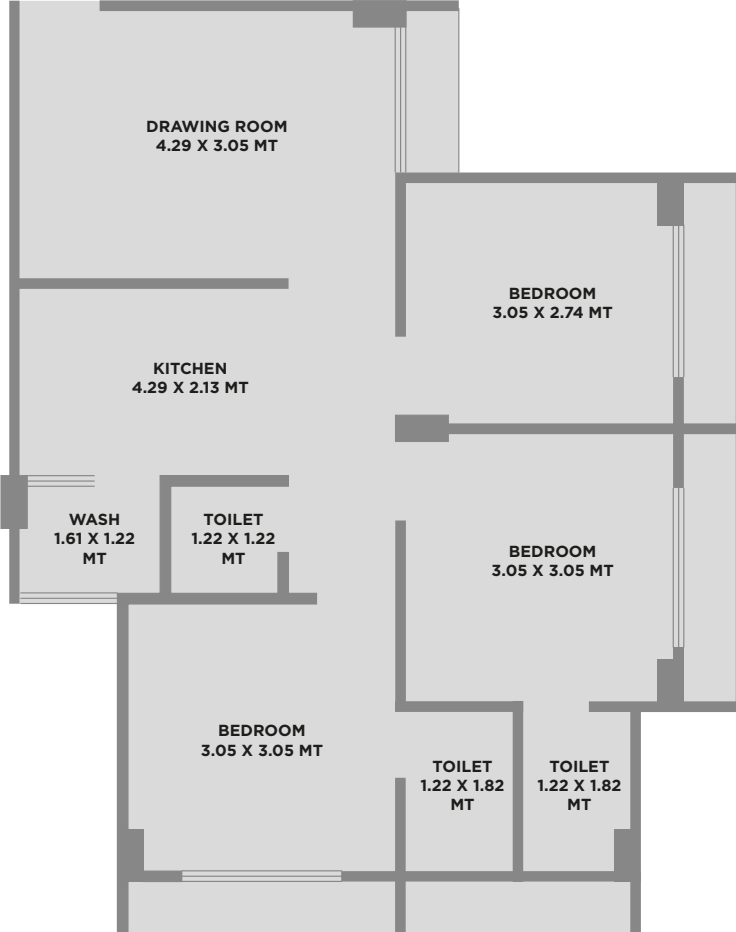
3 BHK PLAN FRONT

FLAT 107 TO 707



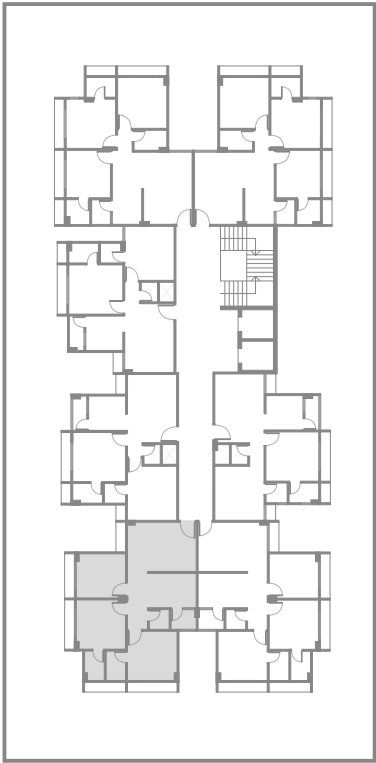
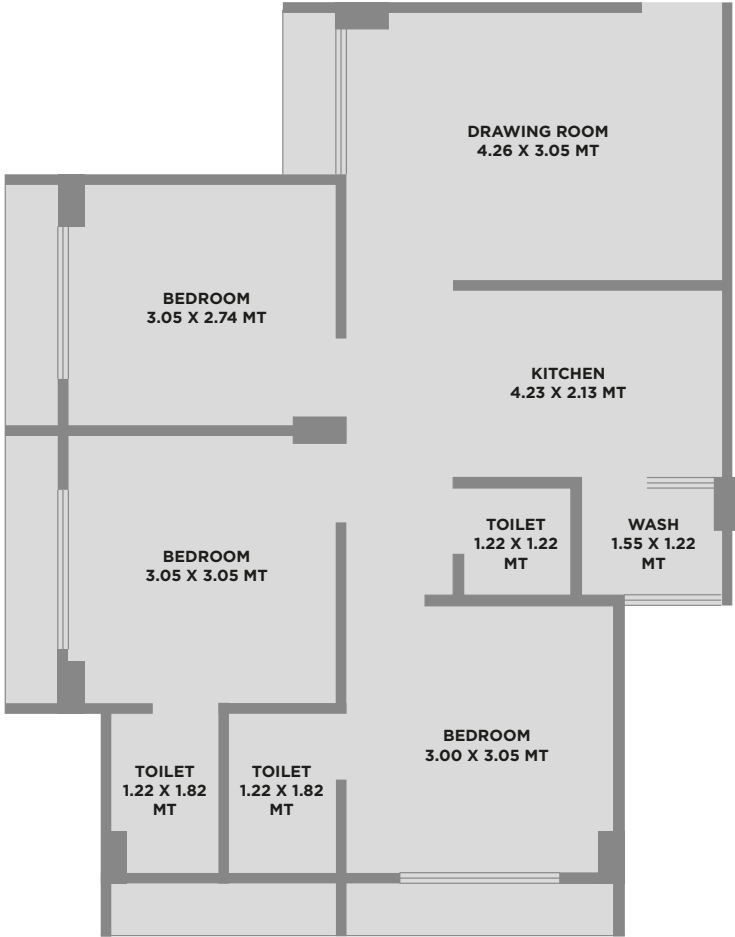
3 BHK PLAN BACK

FLAT 102 TO 702



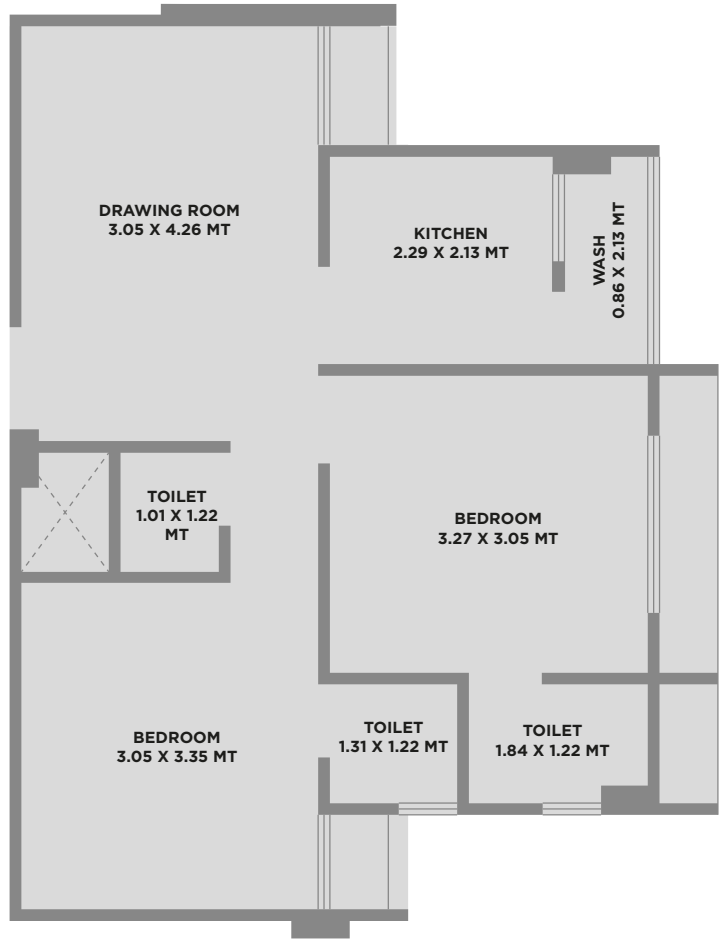
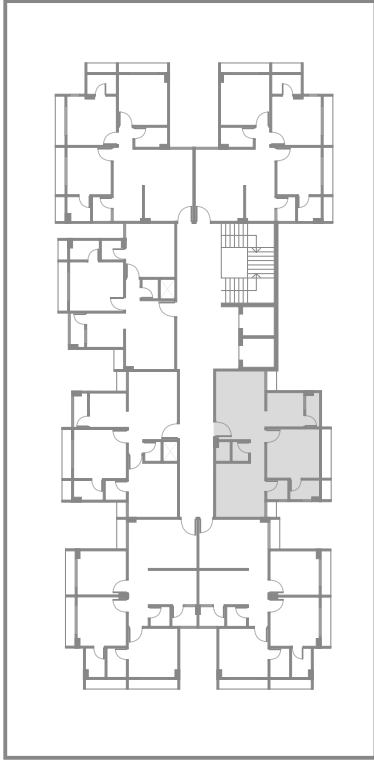
3 BHK PLAN BACK

FLAT 103 TO 703



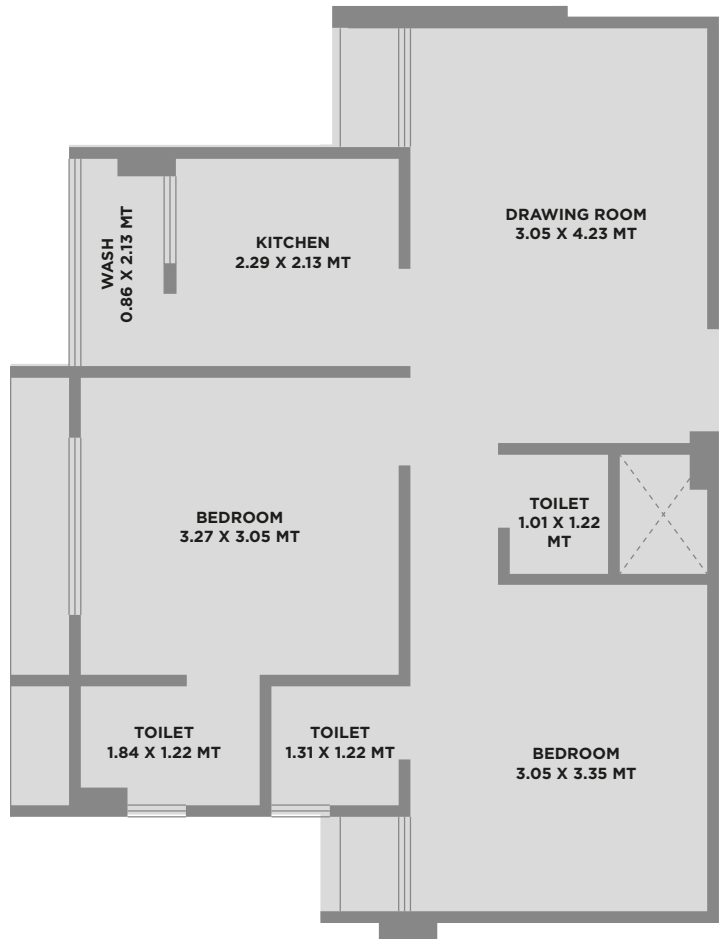
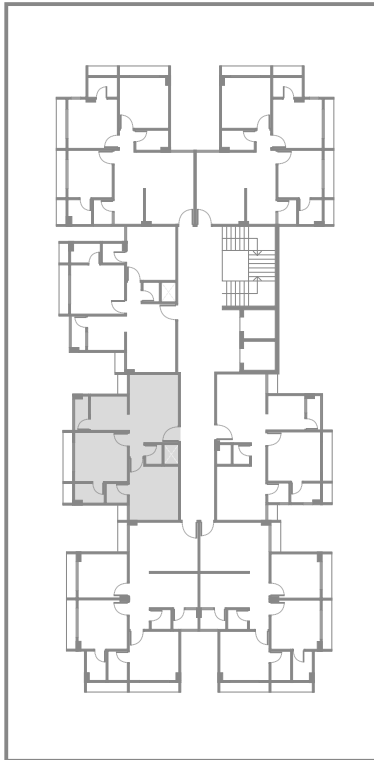
2 BHK PLAN

FLAT 101 TO 701



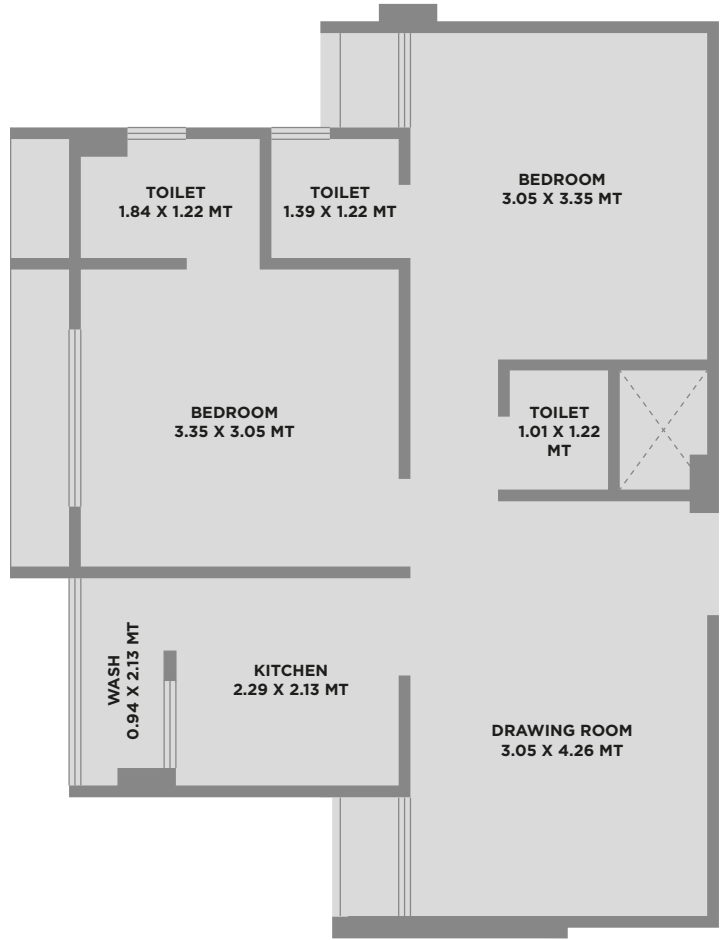
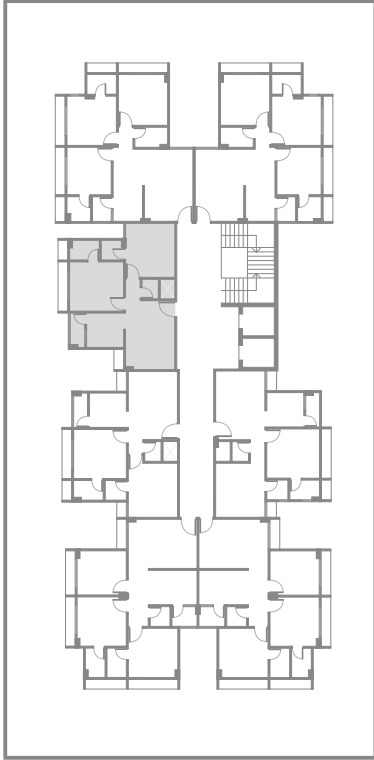
2 BHK PLAN

FLAT 104 TO 704



2 BHK PLAN

FLAT 105 TO 705



AMENITIES



CCTV



24X7 WATER
SUPPLY



EXCLUSIVE
FOYER



AUTOMATIC
LIFT



24X7
SECURITY



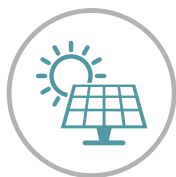
FIRE
SAFETY



COMMON
PARKING



GAS
CONNECTION



ROOF TOP
SOLAR SYSTEM

SPECIFICATION

- **STRUCTURE:** Earthquake Resistant, R.C.C. Frame Structure Designed.
- **FLOORING:** Vitrified tile flooring in Drawing, Dinning, Kitchen and all Bedrooms - Kota stone floor in wash area.
- **KITCHEN:** Granite Sandwich Platform with S.S. Sink- Designer tiles up to lintel level.
- **BATHROOM:** Lintel height designer glazed tiles in all toilets- Standard quality Sanitary ware & fitting in all toilets- Standard quality UPVC & CPVC pipes for water supply- European WC in attach Bathroom and Orissa pan in common bathroom.
- **DOOR & WINDOW:** Decorative main door wooden frame with designer laminate- Laminated flush doors in all rooms & toilet with granite frame- Standard quality hardware & handles- All windows in power coated aluminium section- Well polished granite frame.
- **ELECTRICAL:** Concealed ISI copper wiring with modular switches & MCB- A/C points in bedrooms & Drawing room- T.V. Point in Drawing room- Sufficient electric points in all rooms.
- **WALL FINISH:** Internal Wall- Smooth finish plaster with white putty- External – Double Coat mate Plaster with Acrylic Paint.

CONNECTIVITY

S. G. Highway : 3 km
Bus Stand : 1 Km
Railway Station : 12 km
Airport : 21 km
Metro Station : 4 km

- Stamp duty, Registration Charges, Legal Documentation Charges, GST, AMC & TORRENT POWER charges including cable & substation cost shall be borne by the purchaser.
- Any Additional charges or duties levied by the Government / Local authorities during or after completion of the scheme will be borne by the purchaser.
- In interest of continual developments in the design & quality of construction, the developer reserves all rights to make any changes in the scheme including and not limited to technical specifications, design, planning, layout & all purchasers shall abide by such changes.
- Changes/alteration of any nature including elevation, exterior color scheme, balcony grill or any other changes affecting the overall design concept & outlook of the scheme are strictly NOT PERMITTED during or after the completion of the scheme.
- Any RCC member (Beam, Column, Slab) must not be damaged during your interior work- Maintenance deposit will be charged Extra.
- This brochure is intended only to convey the essential design & technical features of the scheme and does not form part of legal documents.

Sameer
Physiotherapy Clinic

Masjid - e-
saiyda sakina

Gulshan-e-
mehar

LIVING
Möminsärä
THE LAND IS FLOURISHING

Western Park

Bagh-E-Fatima
Apartment

Ayman Recidency Road

Ayman
Recidency

RERA NO:

SITE ADDRESS

586/5 FP No. 38, TP 85, Nr. Amwaaj Residency,
12 mtr. Road, Sarkhej, Ahmedabad - 380055

FOR INQUIRY

+91 9913174482 | +91 9913354482

www.mominsara.com

info@mominsara.com

PROJECT BY

Mominsara developers

CONSULTING ENGINEERS

Snehal K. Ved Sneh Engineers planner,
Civil Engineer & valuer

LEGAL ADVISOR

Sheth Associate

STRUCTURAL ENGINEERS

Gaurang Dave