



Where beauty of
**NATURE AND
ARCHITECTURE
DAZZLE**

2&3

BLESSED
HOMELY
KINDRED
HOMES

POSITIVITY

BLISS

MEMORIES

WELL-BEING

vardhan

Attractive entrance gate

Landscaped garden

Leisure walk area

Common amenities for social use



Where it's the perfect place to be

2&3 **B**LESSED
HOMELY
KINDRED
HOMES

Seating area

24x7 Security

CCTV cameras

Ample parking space



POSITIVITY

vardhan

Where it's the perfect place to be

2&3 **B**LESSED
HOMELY
KINDRED
HOMES

BLISS

varadhan



First Basement Plan



POSITIVITY
BLISS
MEMORIES
WELL-BEING

vardhan

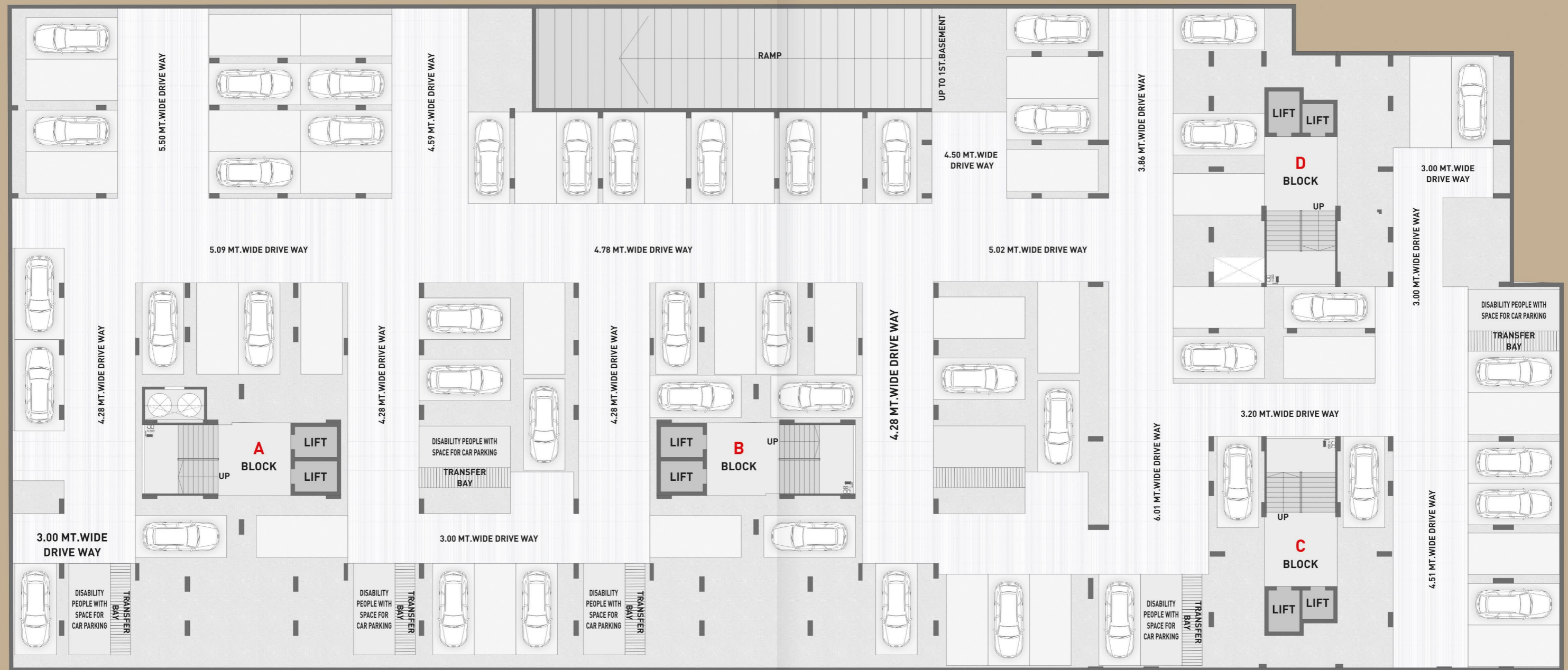


Second Basement Plan



POSITIVITY
BLISS
MEMORIES
WELL-BEING

vardhan



Ground Floor Plan



POSITIVITY
BLISS
MEMORIES
WELL-BEING

vardhan



24.00 MT WIDE T.P.S. ROAD

ENTRY

EXIT

1st Floor Plan



POSITIVITY
BLISS
MEMORIES
WELL-BEING

vardhan



2nd to 14th Floor Plan



POSITIVITY
BLISS
MEMORIES
WELL-BEING

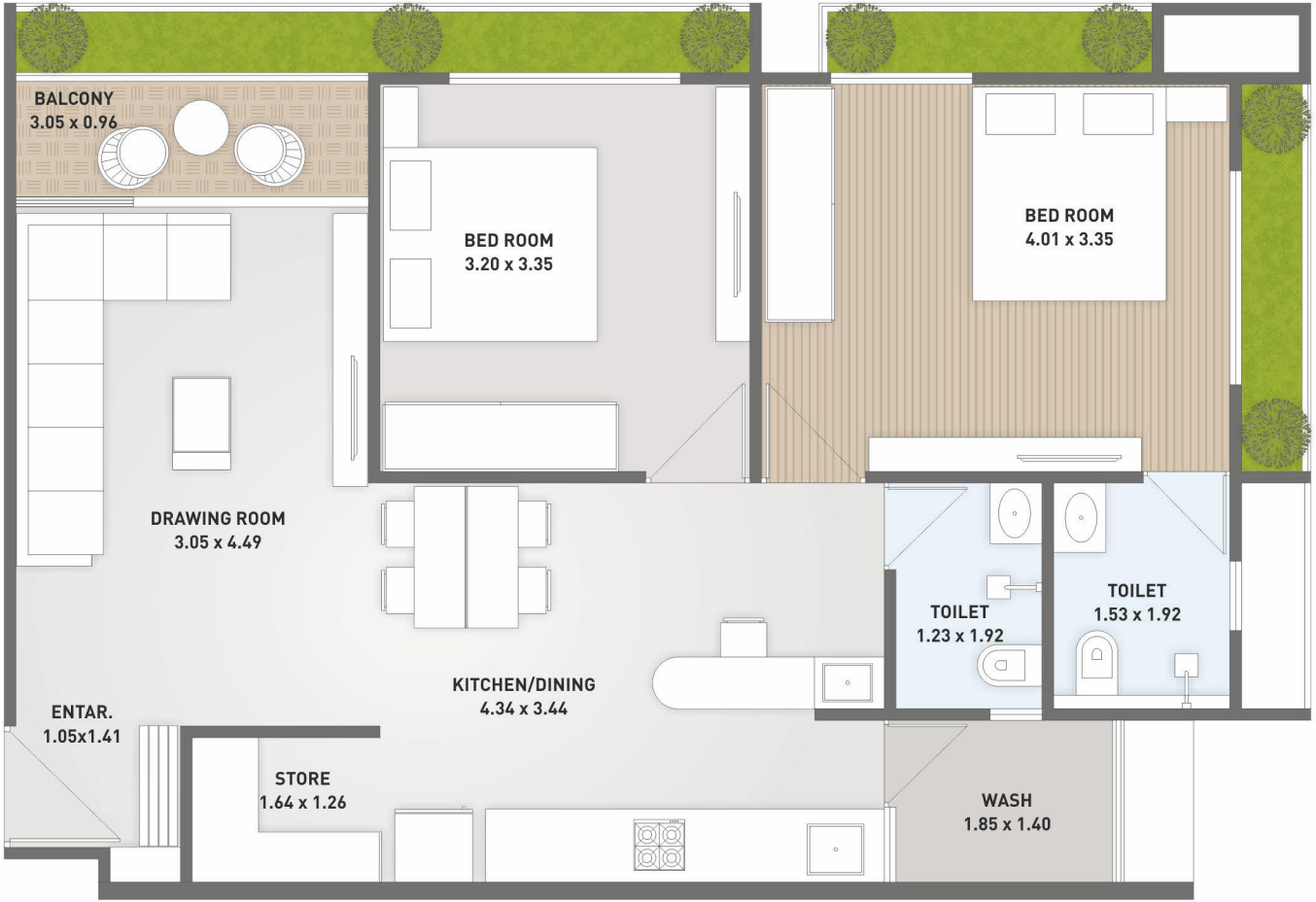
vardhan



BLOCK A + B
3 BHK TYPICAL FLOOR PLAN



BLOCK C + D
2 BHK TYPICAL FLOOR PLAN



SPECIFICATIONS



STRUCTURE

- Earthquake resistant R.C.C. frame structure (with block masonry).



EXTERNAL & INTERNAL WALL FINISHES

- All internal walls will be finished with putty over mala plaster.
- All external walls will be finished with double coat sand-faced plaster/paint/texture.



FLOORING

- Vitrified tiles in drawing, dining, kitchen and all bedrooms.
- Kota stone/ anti-skid tile flooring in wash area.
- Rustic/ wooden finish tile in balcony.
- Granite with anti-skid treatment in staircase.
- Granite/ natural stone/composite stone in foyer area.



DOOR AND WINDOWS

- Decorative main door finished with veneer/ laminate.
- All doors are flush doors with wooden frame with high quality hardware.
- Premium quality aluminum windows.
- Sill & jambs in natural stone in windows.



KITCHEN

- Granite stone counter top with stainless steel sink.
- Designer vitrified/ ceramic tiles in kitchen dado up to lintel level above granite counter.
- Electric point for microwave oven & water purifier.



TOILETS

- Anti-skid ceramic tiles for flooring.
- Designer superior quality ceramic tiles wall dado up to lintel.
- Top of the line sanitary ware and C. P. fitting of Jaquar Hindware or equivalent company.
- Gas/ electric geyser points in all washrooms.



ELECTRICAL

- All electrical wiring is concealed with PVC insulation premium wires with modular switches.
- All switches are of Anchor/ Hifi/ Pointer or equivalent.
- Power back up for common areas.



LIFTS



- Two lifts per block.
- Automatic lifts of superior company.
- Dedicated service/ material/ stretcher lift in all blocks.



SECURITY

- Gated community with round the clock security.

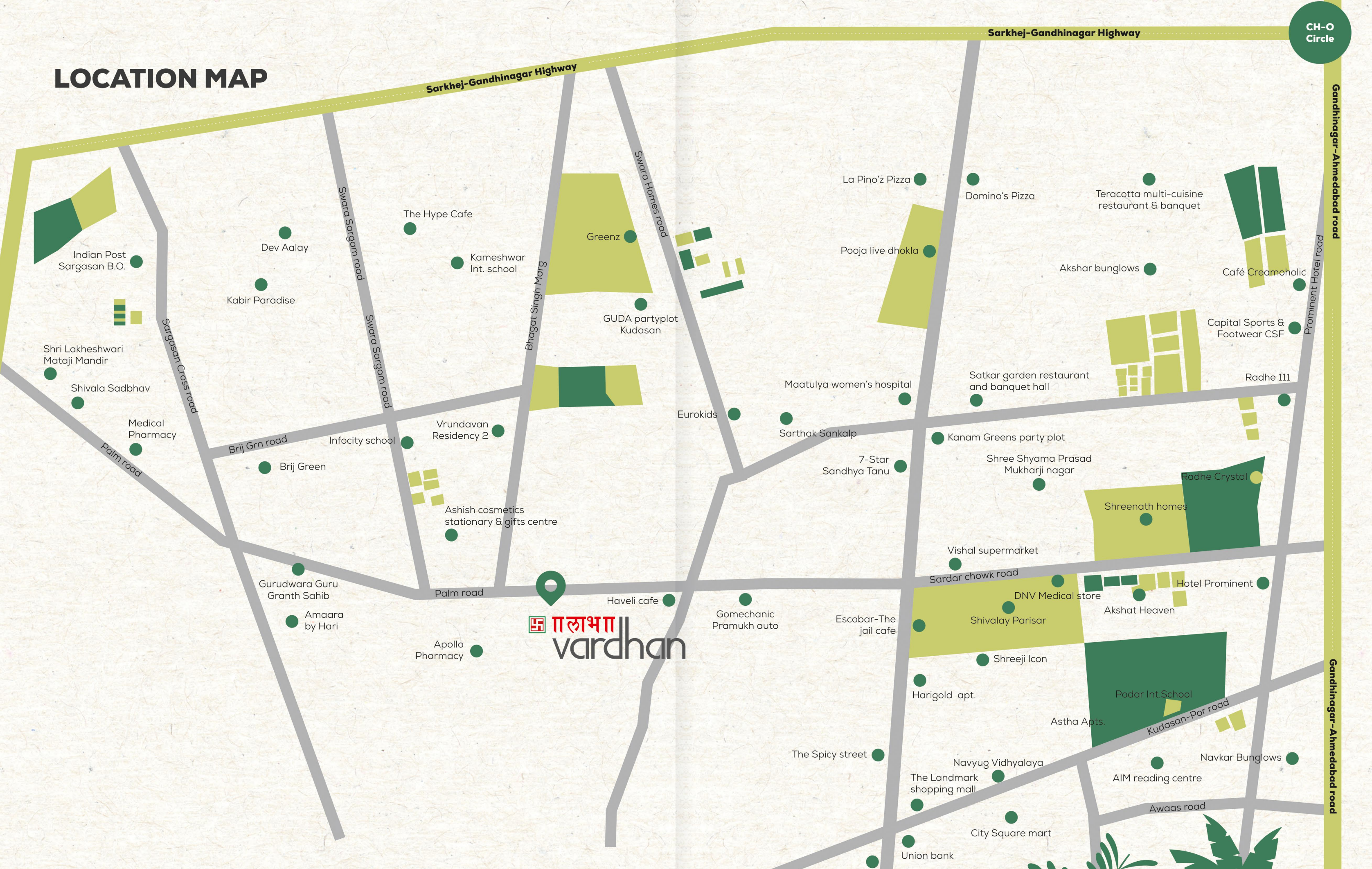


WATER

- Uninterrupted 24 hours water supply through own borewell.



LOCATION MAP



लभ
vardhan

SITE ADDRESS : Labh Vardhan, Nr. Shivalay chowkdi, Kudasan (Por), Gandhinagar, Gujarat
MOBILE : +91 98982 55283, 90999 05283, 99043 19319



A project by
LABH INFRA PROJECT

Architect



Structure Engineer



MEP



Landscaping Architect



Rendered & Designed by

