

PROJECT BY  
**YNP**  
INFRASTRURE

AMAARA BY HARI GROUP,  
Near Vrundavan Vatika Plotting, Saragasan Por Village Road,  
Gandhinagar.

---

CONTACT : +91 98797 07998

**AMAARA**  
BY HARI GROUP

4 BHK ELITE LAVISH LIVING

---





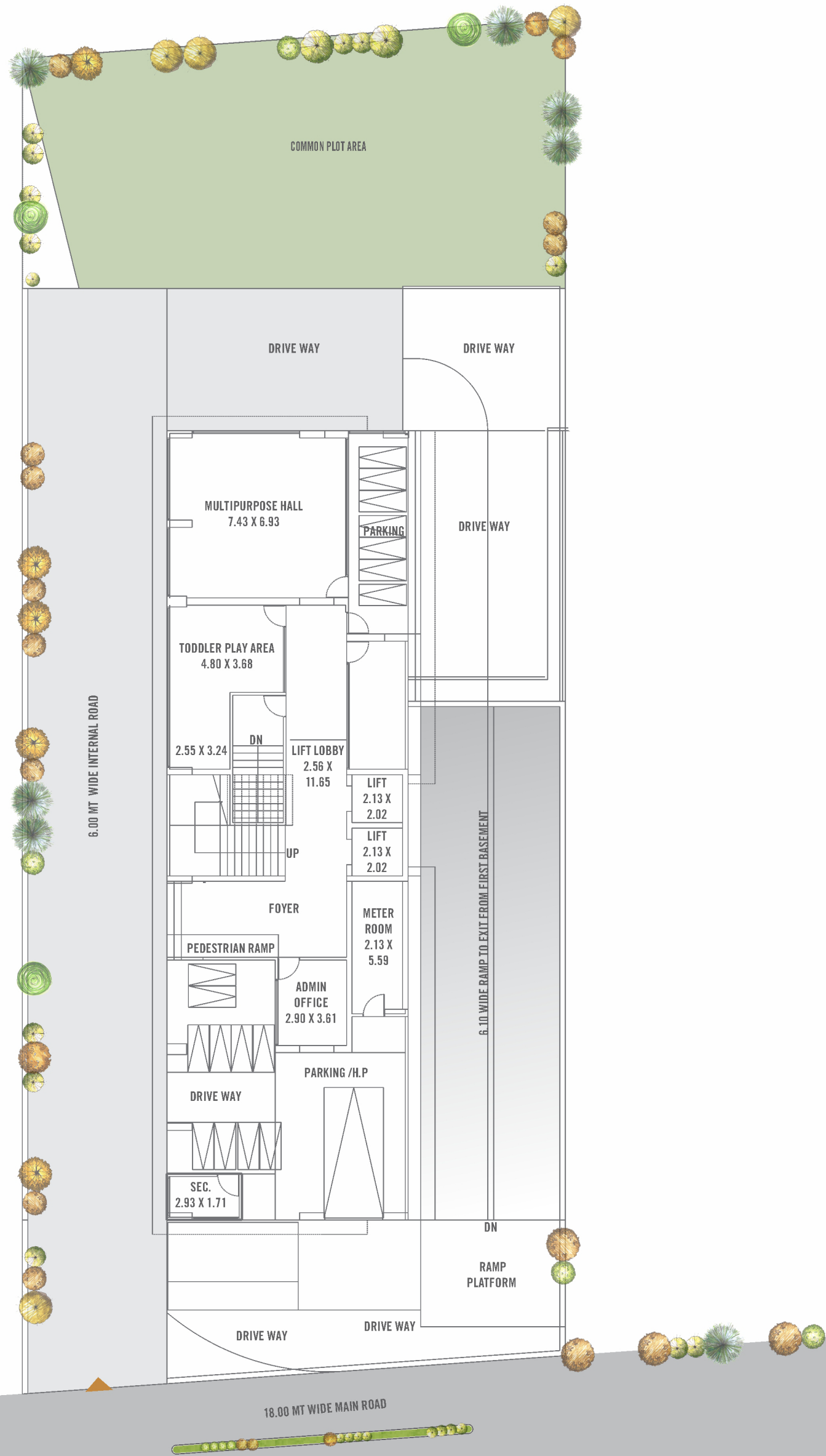
A perfect ode to  
**HARMONY IN LIFE!**

With a magnificent elevation and superlative style,  
here is an abode of your dreams

AMAARA  
BY HARI GROUP

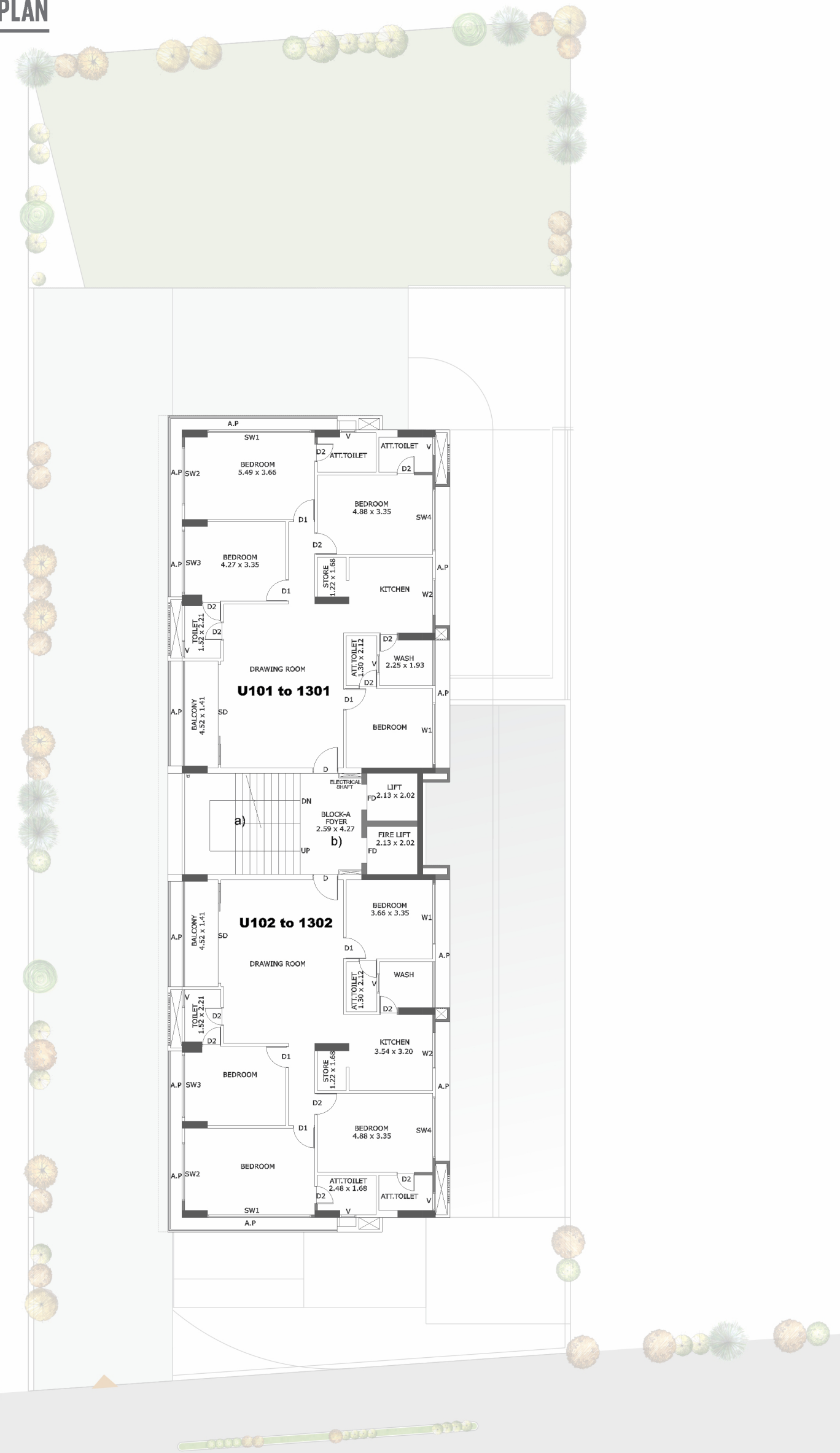


# LAYOUT PLAN



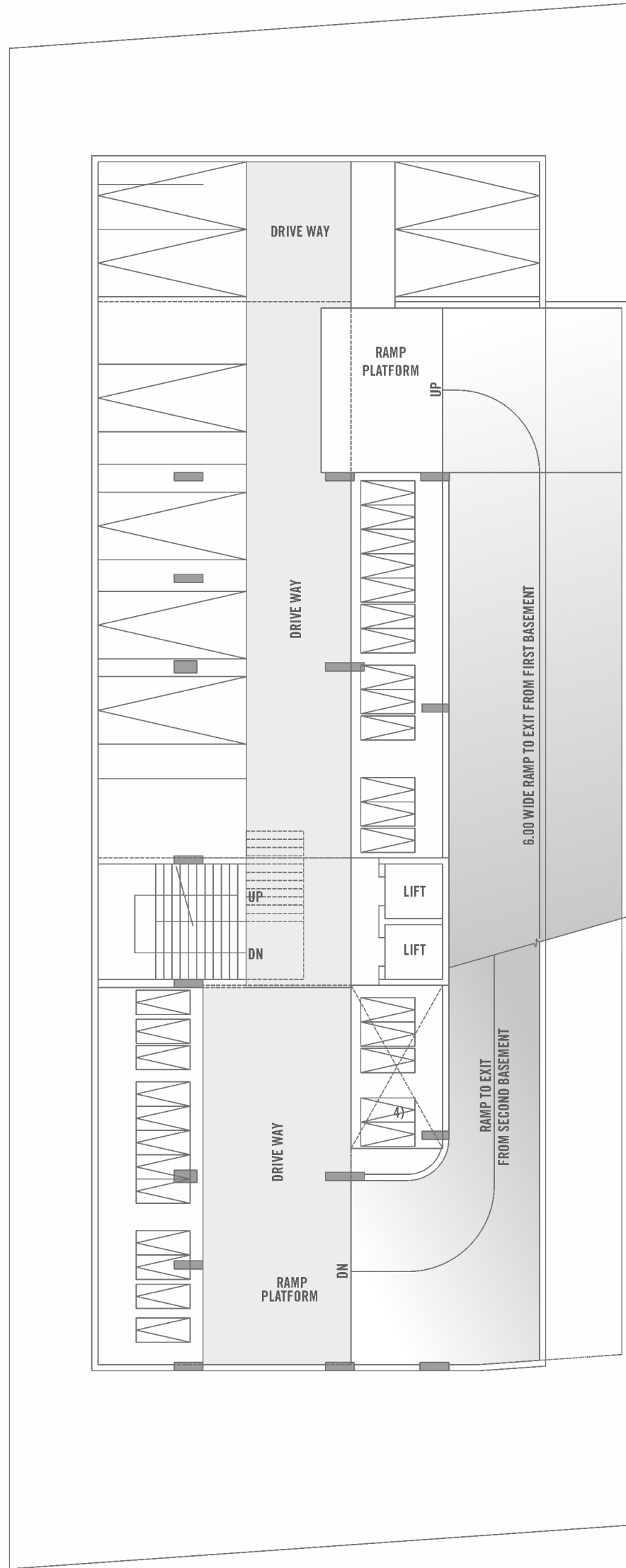
# TYPICAL FLOOR PLAN

1st To 13th

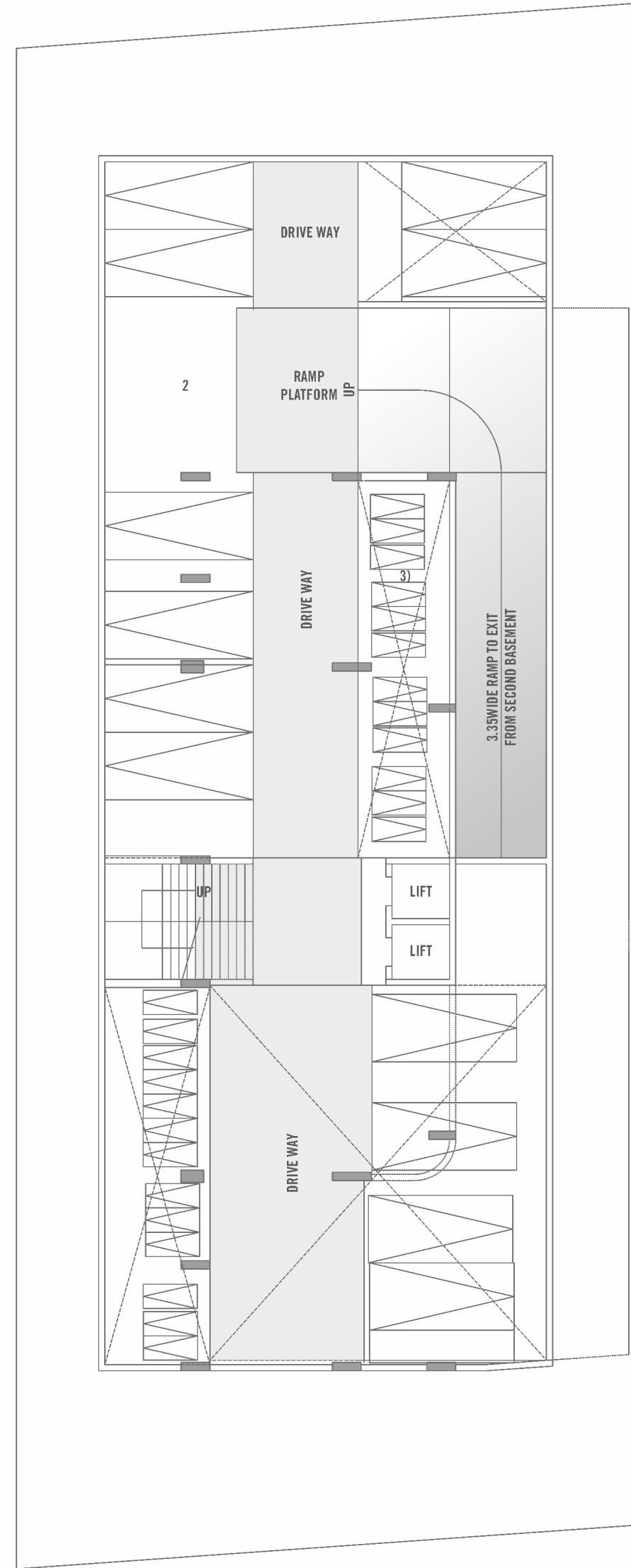




# 1ST BASEMENT PLAN

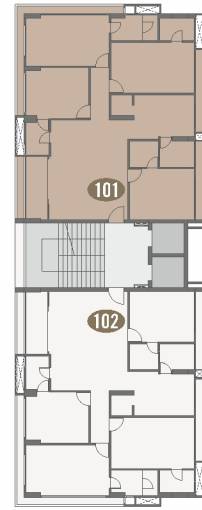


# 2ND BASEMENT PLAN





# 4 BHK UNIT PLAN



# AMENITIES



Entrance gate



CCTV camera



24 x 7 Security



Pick up zone



Stack parking



Senior citizen set out



Children play area



24 Hrs Water supply



Solar System



Garden



Power Back-up Generator



Club house



Fire safety

Get your life enriched at AMAARA, with amenities that suit your sophisticated lifestyle to the hilt while pampering your senses and meeting your needs

**AMAARA**  
BY HARI GROUP







# SPECIFICATION

## STRUCTURE

Earthquake resistant R.C.C work

## FLOORING

Unique premium quality vitrified tiles.  
China mosaic flooring in terraces.

## KITCHEN

Granite top platform with S.S sink. Designer glazed tiles dado-up to lintel level.

## DOOR & WINDOWS

Decorative main door with wooden frame.  
All other doors are flush door with wooden frame with good quality fittings.  
Aluminum sliding window with heat reflective glass.

## ELECTRIFICATION

3 phase concealed copper wiring with premium modular switches.

## WALL FINISH

Internal smooth cement plaster with putty finish.  
External double coat sand face plaster with good quality acrylic paint.

## TREATMENT

Anti termite treatment.

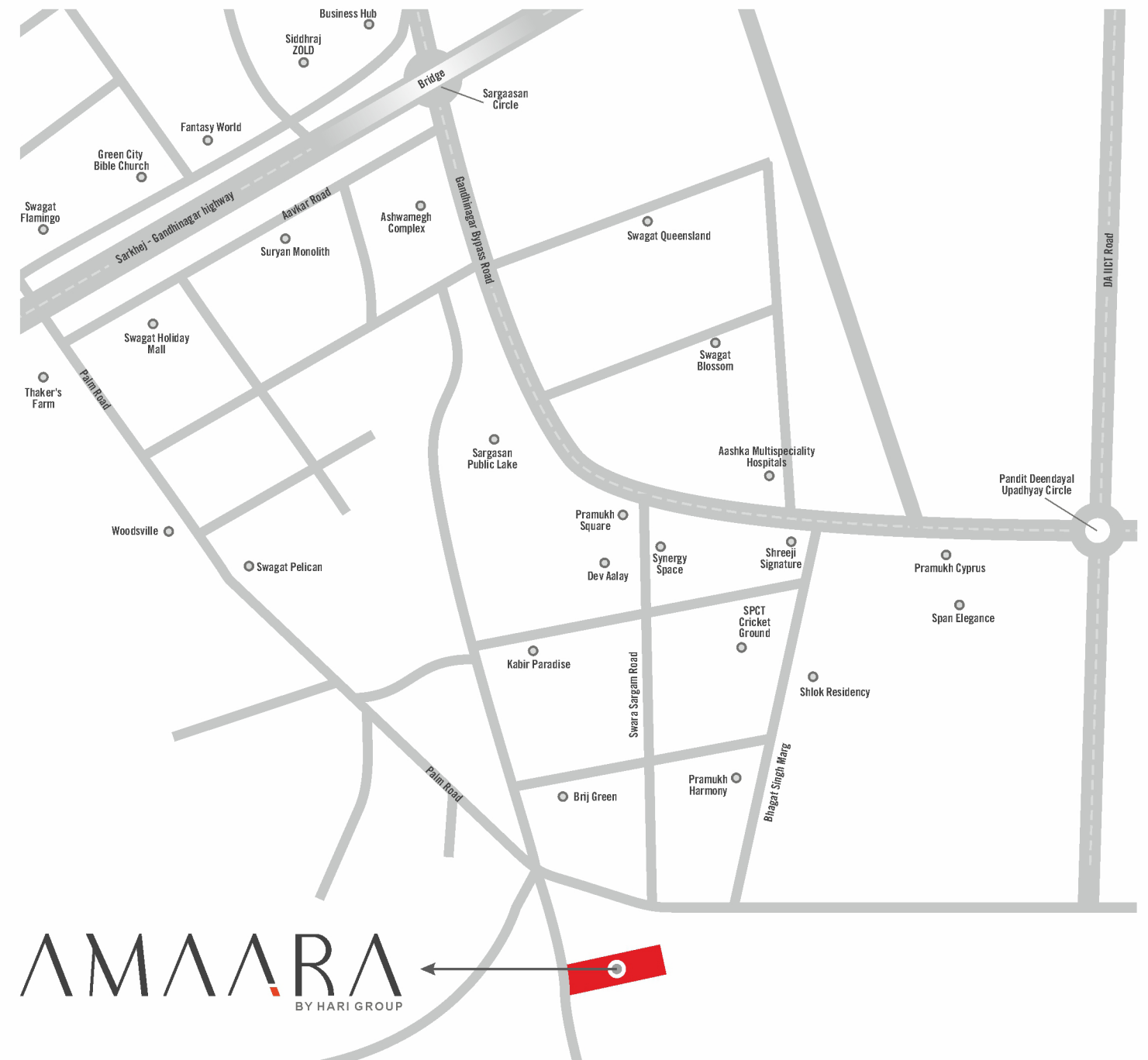
## TOILET/PLUMBING

Designer glazed tiles up to lintel level.  
Premium quality bath fitting & sanitary wares.

### NOTE :

1.) Commencement and timely execution of the project is subject to all necessary approvals from relevant govt. authorities, occurrence of natural calamities or any other external factors beyond developer's control. 2.) The dimensions shown in the brochure are approximate. 3.) The developer reserves the right to change, revise or make any modification, addition, omission or alteration in the scheme as a whole or part thereof, at their sole discretion. 4.) The brochure is only for illustration & private circulation purpose & is not a legal document or a binding one. 5.) Government levies like GUDA, UGVCL, Stamp Duty, Registration charges, Legal charges, GST and any other additional charges are to be borne by the member. 6.) Subject to Gandhinagar Jurisdiction.

## LOCATION MAP



SITE ADDRESS : AMAARA BY HARI GROUP, Near Vrundavan Vatika Plotting,  
Saragasam Por Village Road, Gandhinagar.

CONTACT : +91 98797 07998

PROJECT BY :

YNP  
INFRASTRURE

ARCHITECT :



ENGINEER :

NISARG H.PATEL  
GUDA/ENGI39010512016