

EKAANSH

RESIDENTIAL APARTMENT



EKAANSH

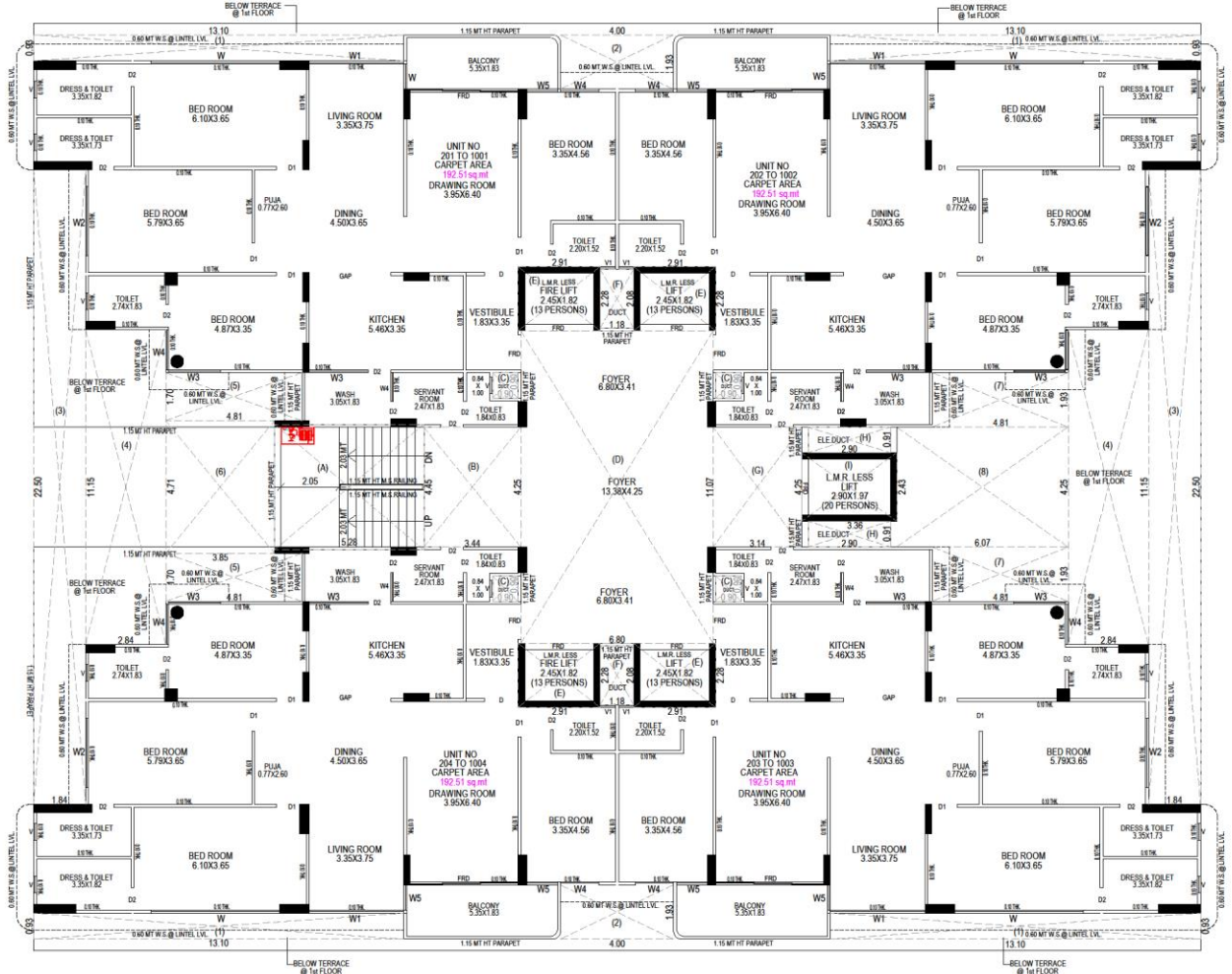
RESIDENTIAL APARTMENT



1st FLOOR PLAN

EKAANSH

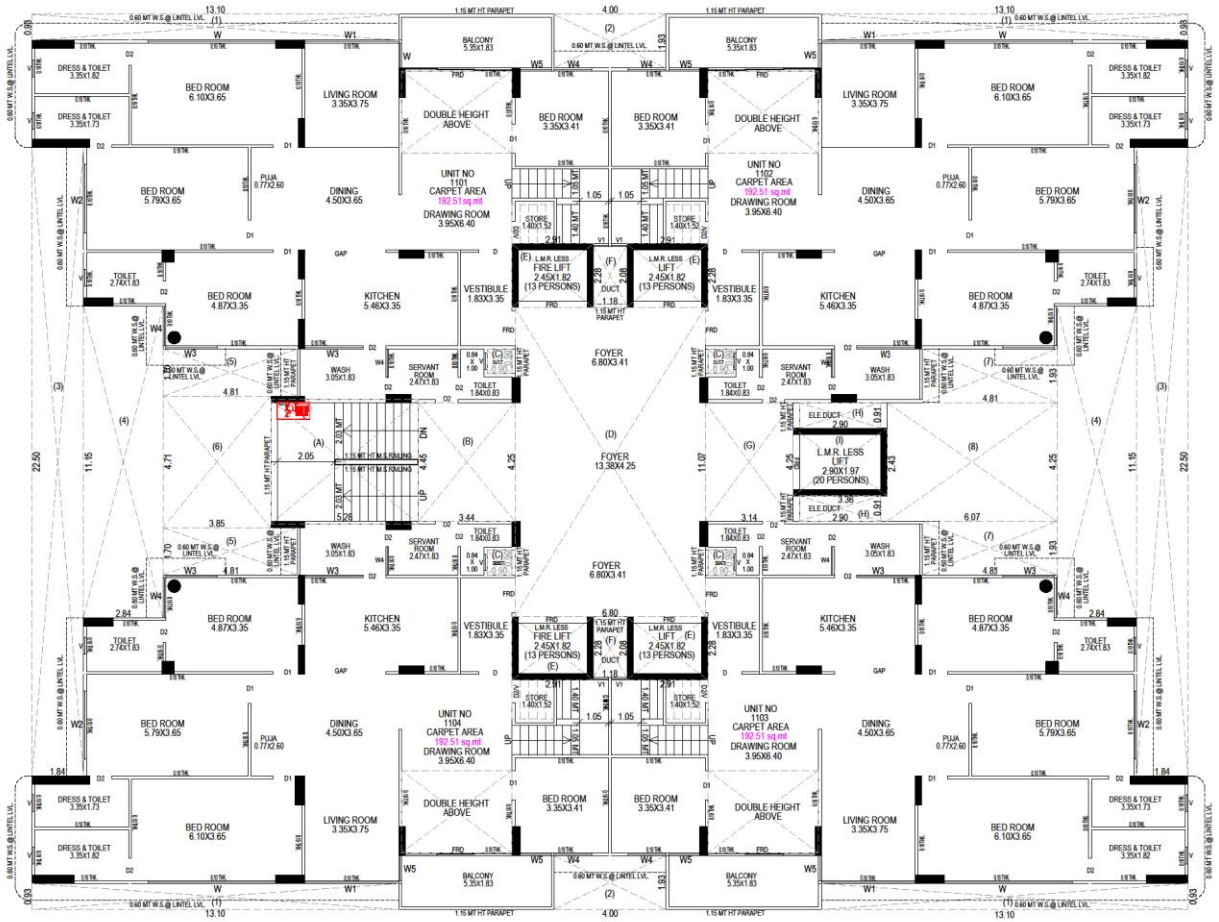
RESIDENTIAL APARTMENT



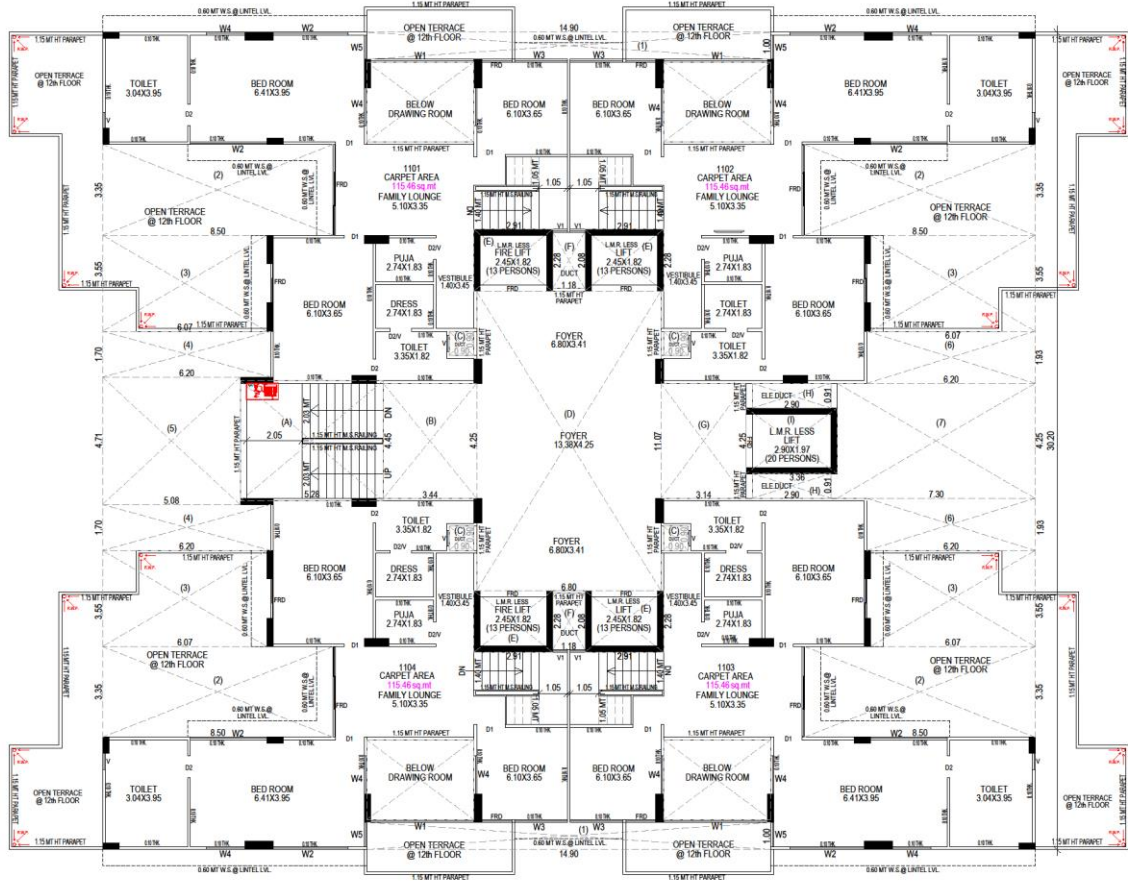
TYPICAL FLOOR PLAN
(2nd,3rd,4th,5th,6th,7th,8th,9th,10th FLOOR)

EKAANSH

RESIDENTIAL APARTMENT



11th FLOOR PLAN



12th FLOOR PLAN

**SPECIFICATIONS EKAANSH
STRUCTURE:**

R.C.C. Frame structure

FLOORING:

Vitrified Tiles in Entire Appartments

KITHCHEN:

Platform with Granite Top, Stainless Steel Sink and Glazed Tiles up to Lintel Level

TOILET:

Toilets with good quality glazed tiles up to lintel level with design concept with good sanitary ware and Quality Fittings

DOOR & WINDOWS:

Decorative main door with wooden frame and all other flush doors with wooden frames Aluminium section sliding windows with full glass & stone gems around

WALL FINISH:

Internal smooth plaster with putti finished, external double coat sand face /texture plaster with acrylic paint.

Electrification:

Concealed copper wiring with Modular Switches sufficient number of points With MCB Distribution Panel.

Developed By : Kharawala Realty
**ADDRESS : Ekaansh, Nr. HCG Hospital, opp. Maharastra Society,
Mithakhali, Ahmedabad - 380006**
RERA REG. No. :
RERA Web Site : gujrera.gujarat.gov.in