



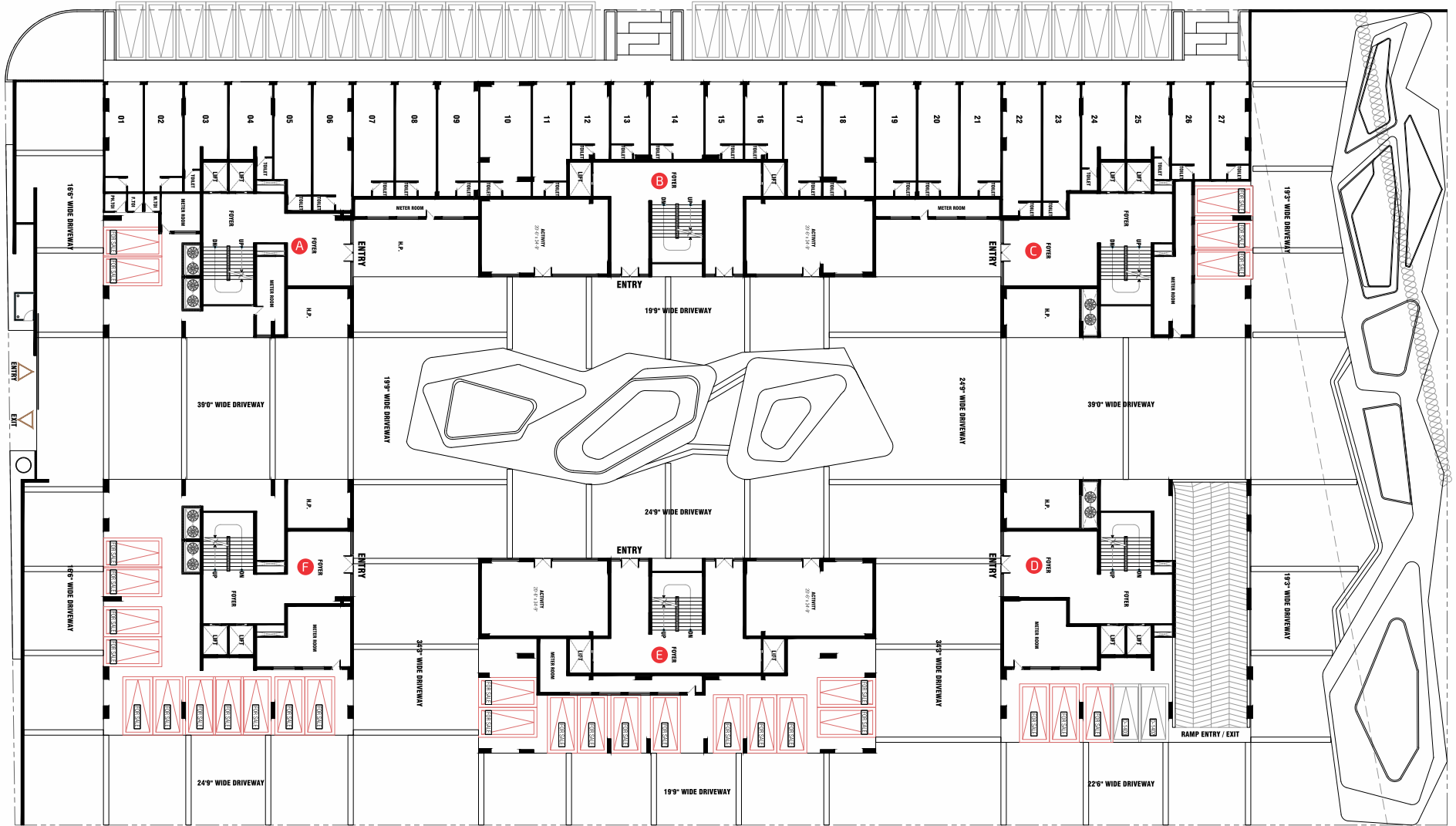




GROUND FLOOR

12.00 MT WIDE ROAD

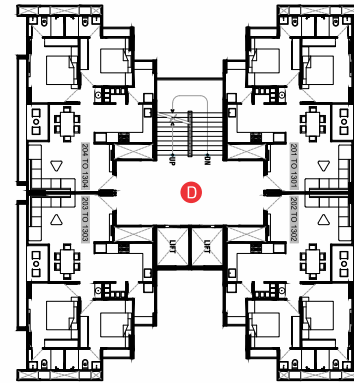
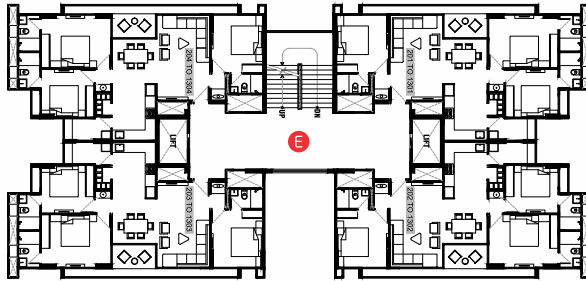
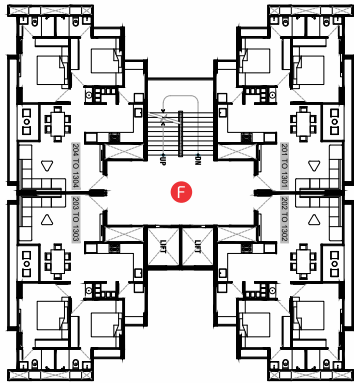
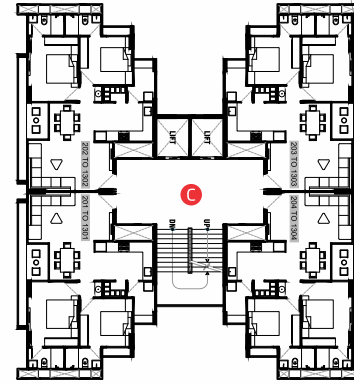
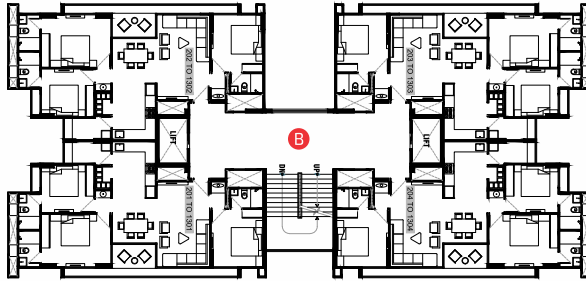
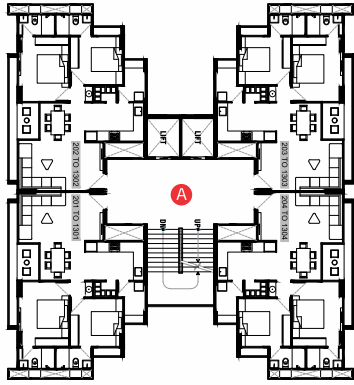
18.00 MT WIDE ROAD



TYPICAL FLOOR

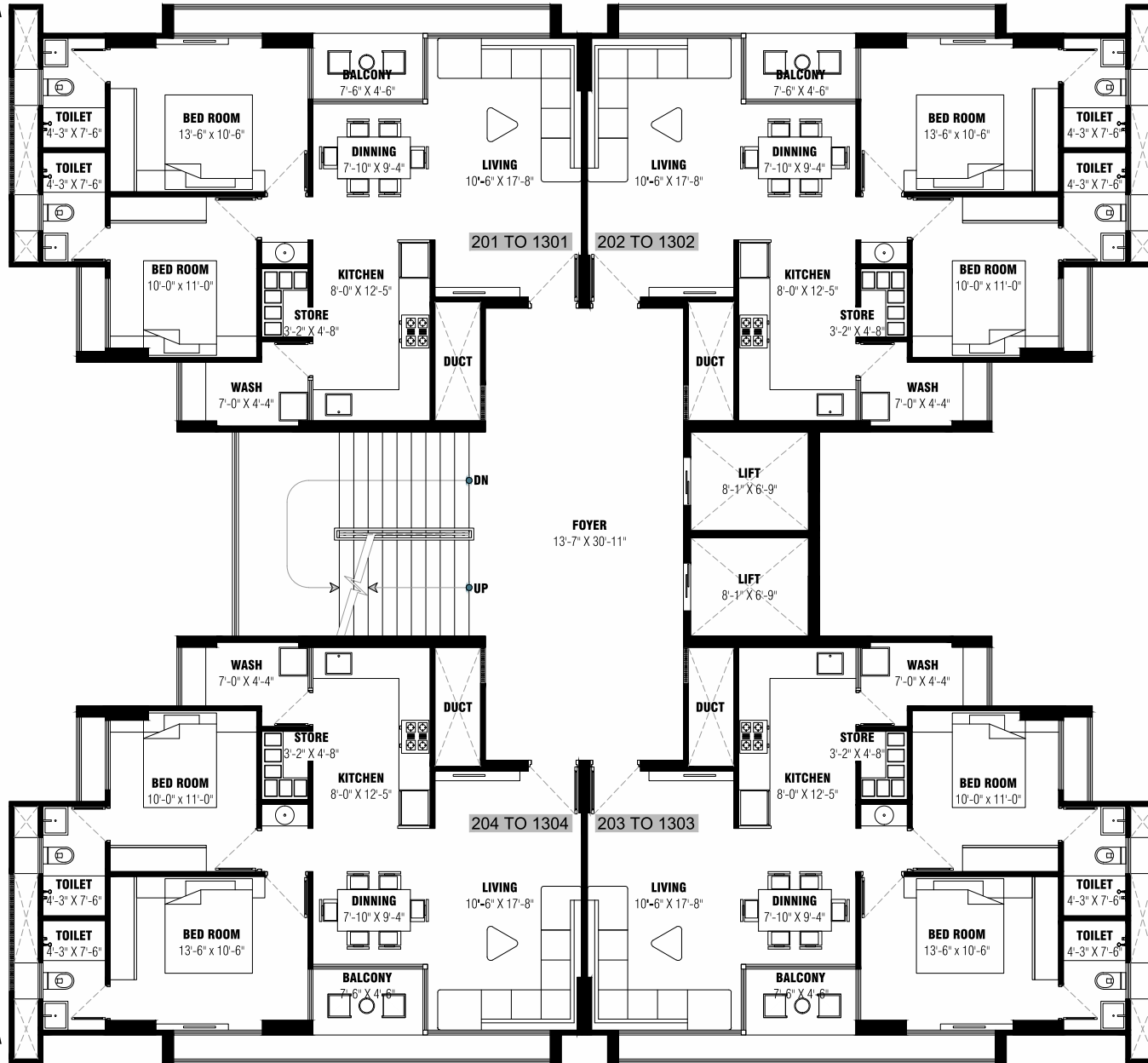
12.00 MT WIDE ROAD

18.00 MT WIDE ROAD



TYPICAL FLOOR - BLOCK A

BUILT-UP AREA
92.76 SQ.YD.



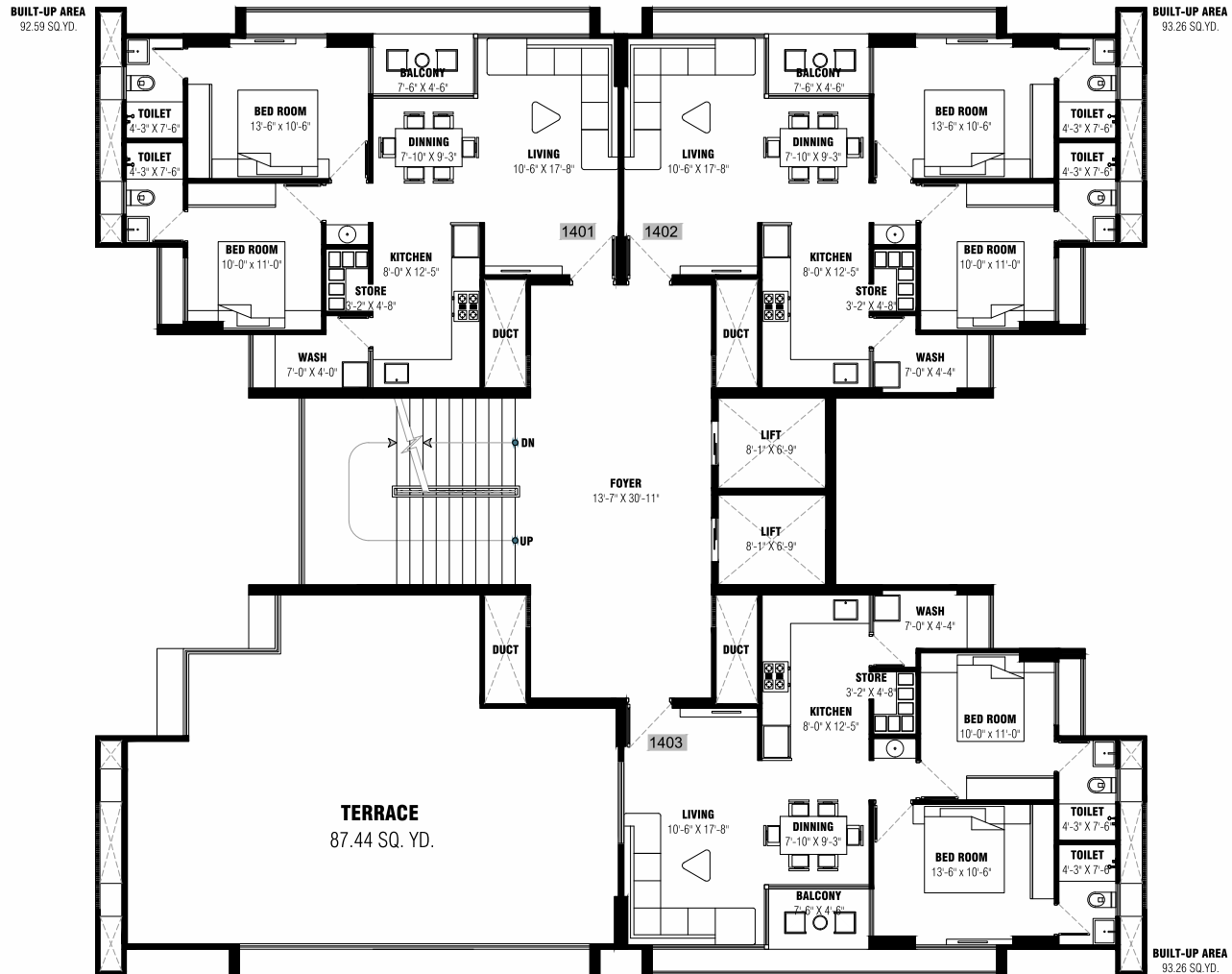
BUILT-UP AREA
93.26 SQ.YD.

BUILT-UP AREA
92.76 SQ.YD.

BUILT-UP AREA
93.26 SQ.YD.



PENTHOUSE - BLOCK A



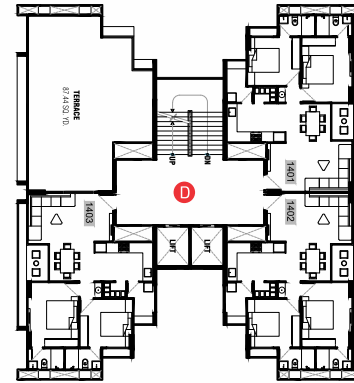
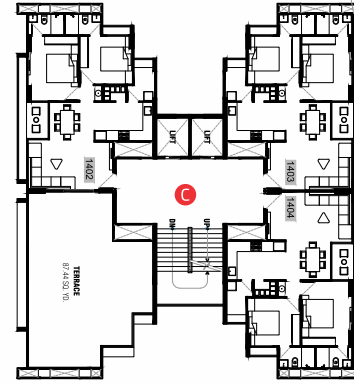
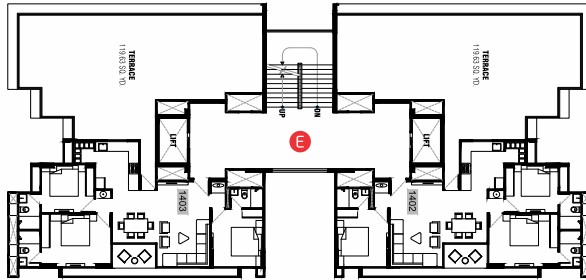
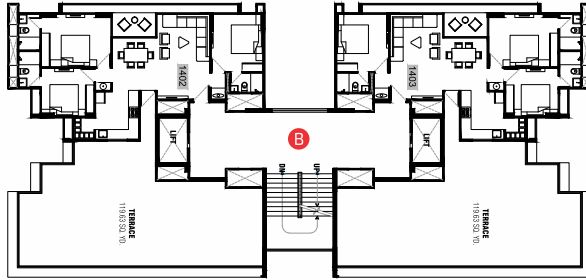
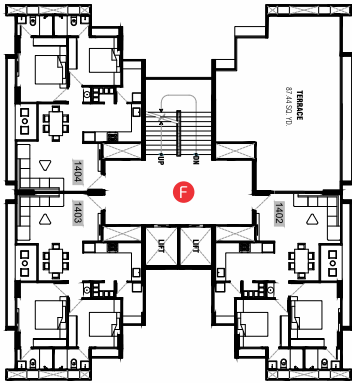
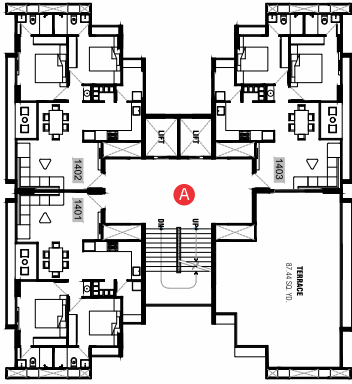
PENTHOUSE - BLOCK B & E



14TH FLOOR - LAYOUT

12.00 MT WIDE ROAD

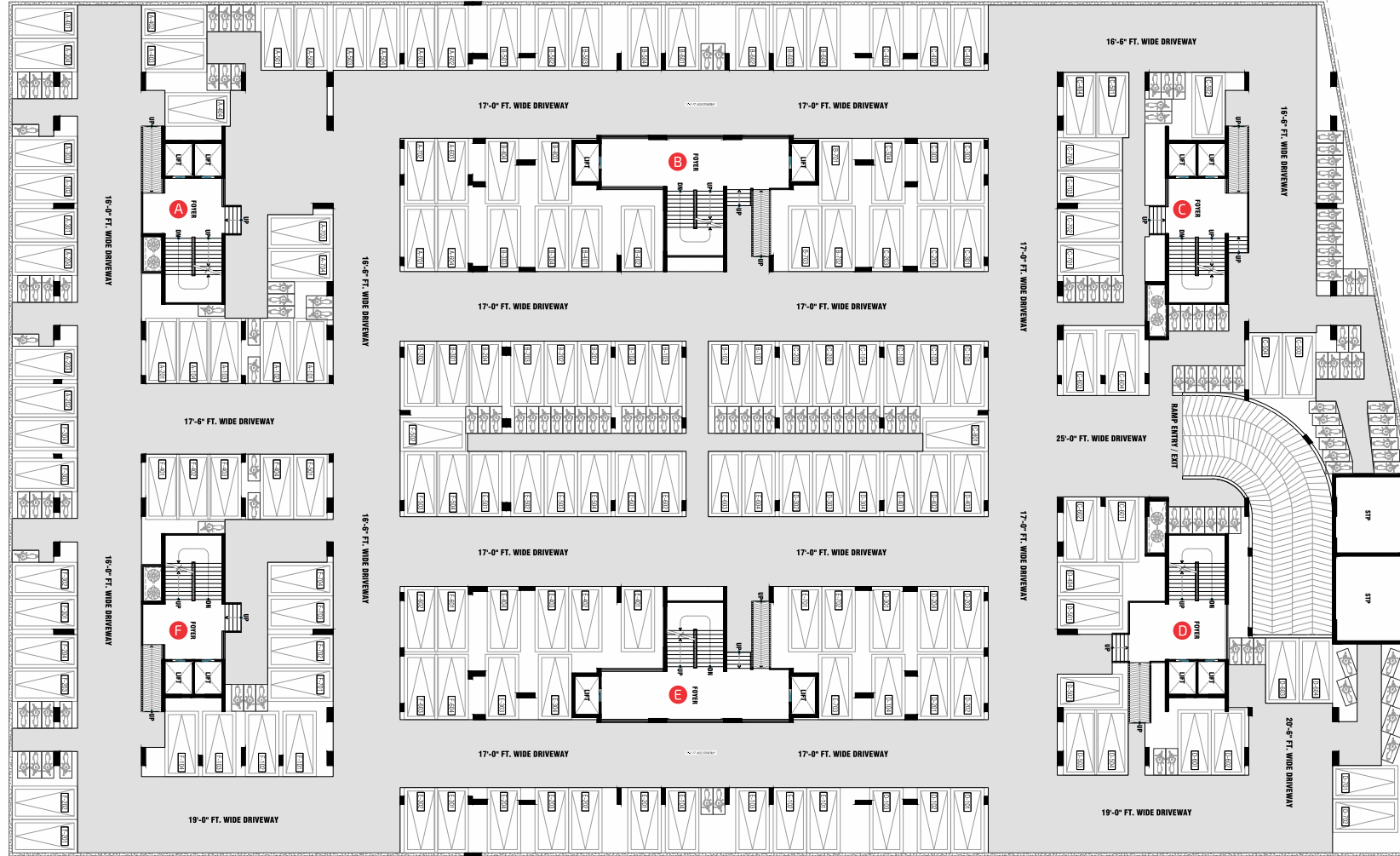
18.00 MT WIDE ROAD



BASEMENT-2

12.00 MT WIDE ROAD

18.00 MT WIDE ROAD



SPECIFICATIONS

FOYER

- Ultra-modern entrance foyer
- Best quality flooring
- Vitrified flooring

KITCHEN

- Granite platform with SS sink having drainboard
- Designer digital tiles up to lintel level
- Designer washbasin in a common area

DOOR

- Decorative main door along with a handle and safety lock
- Wooden door frames

WINDOWS

- Anodized aluminum section
- Full-size windows in living room & three bedroom for air ventilation

ROAD

- RCC road for internal campus
- Terrace double coat fully waterproofing with a china mosaic

ELECTRIFICATION

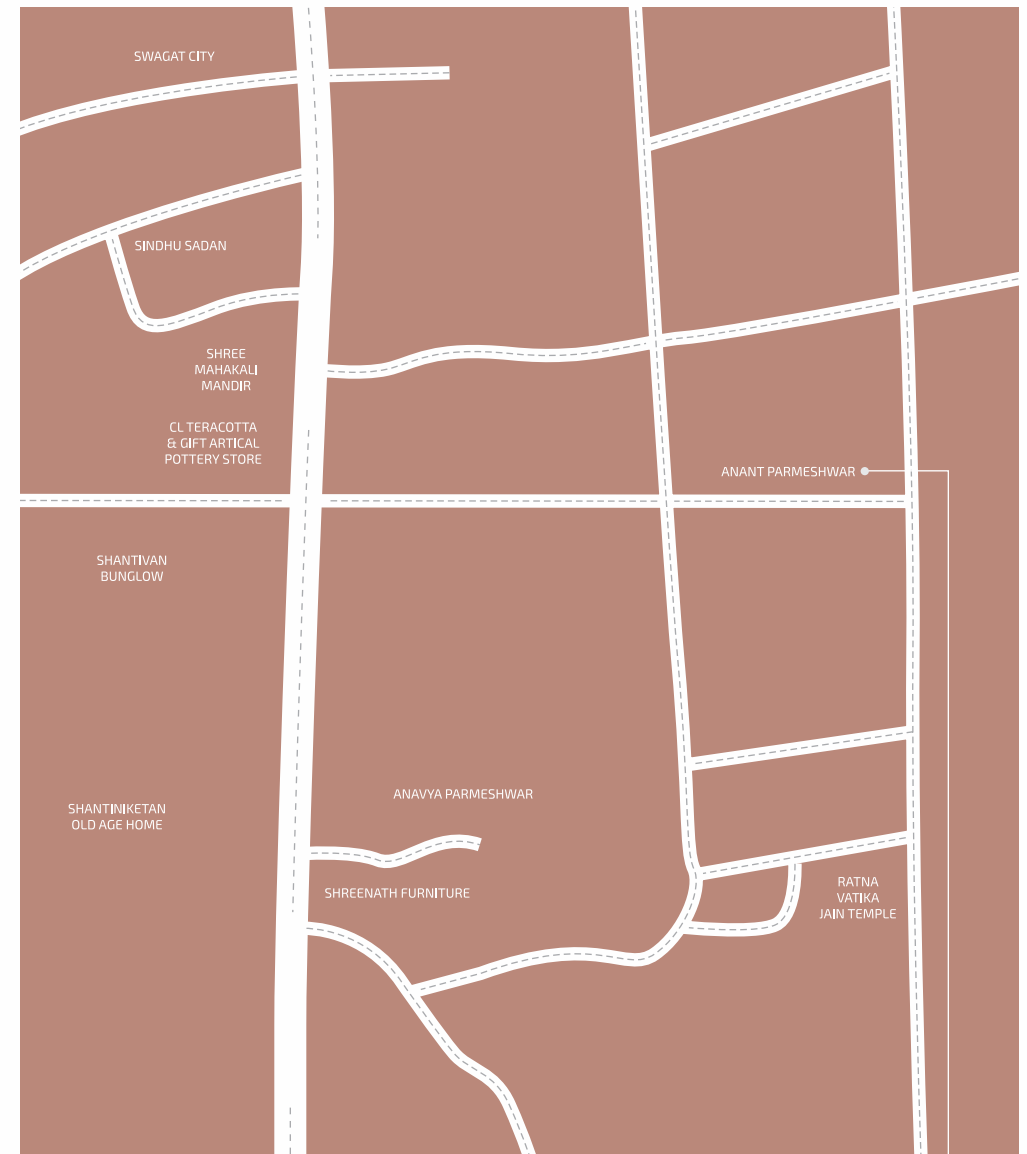
- Modular switches & concealed circuit wiring
- Sufficient points in all rooms
- MCB in individual flat for safety
- High ampere special electric point for freeze, oven, mixer, RO plant, floor mill, washing machine, TV & telephone

ENAMEL

- Acrylic water proof paint on external wall
- Acrylic color in common areas
- Well refined putty in internal walls

PLUMBING

- Concealed modern plumbing system
- ISI brand CPVC & UPVC plumbing & drainage piping
- Standard brand fitting by excellent series



Developer
Parmeshwar Reality

Structure
Achal Parikh

Architect
9th Street Architects



Opp. Anavya Parmeshwar, Nr. Water Tank,
Sabarmati - Mehsana Highway, Adalaj - 382421
Call Us : +91 9925393417
E-mail us : parmshwarreality@gmail.com