

Project by:
SHIVANTA

Developers:
SHIVANT INFRA

E-mail : shivantainfra@yahoo.com
www.shivantainfra.com

Contact
7575059797 / 7575059898



VALENCIA

Opp. Shivanta Greens,
Krish Bungalows & Dev Vatika Road,
Nr. S. P. Ring Road, Lambha,
Ahmedabad.



VALENCIA

3 & 4 BHK
ULTRA LUXURIOUS BUNGALOWS



VALENCIA

A home for everyone
HAPPINESS FOR ALL

SOMETIMES BEST THINGS IN LIFE COME AT THE SMALLEST PRICE.
Welcome to Valencia

Valencia

By Shivanta





VALENCIA

We all wish for a life full of happiness. A life that gives us ample opportunities to share and enjoy the pleasant moments with our near and dear ones.





LUXURY AMENITIES



L.E.D. Street Light



Security Cabin



School Bus
Pick-up Stand



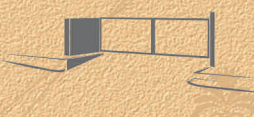
R.C.C. Road,



Landscape Garden



Senior Citizen
Sitting



Heritage Look
Entrance Gate



Indoor Games



24 Hours Security



Children Play Area



24 Hours Water
with Meter



Gazebo



Club House



Member Meeting Room



C.C.T.V. Camera



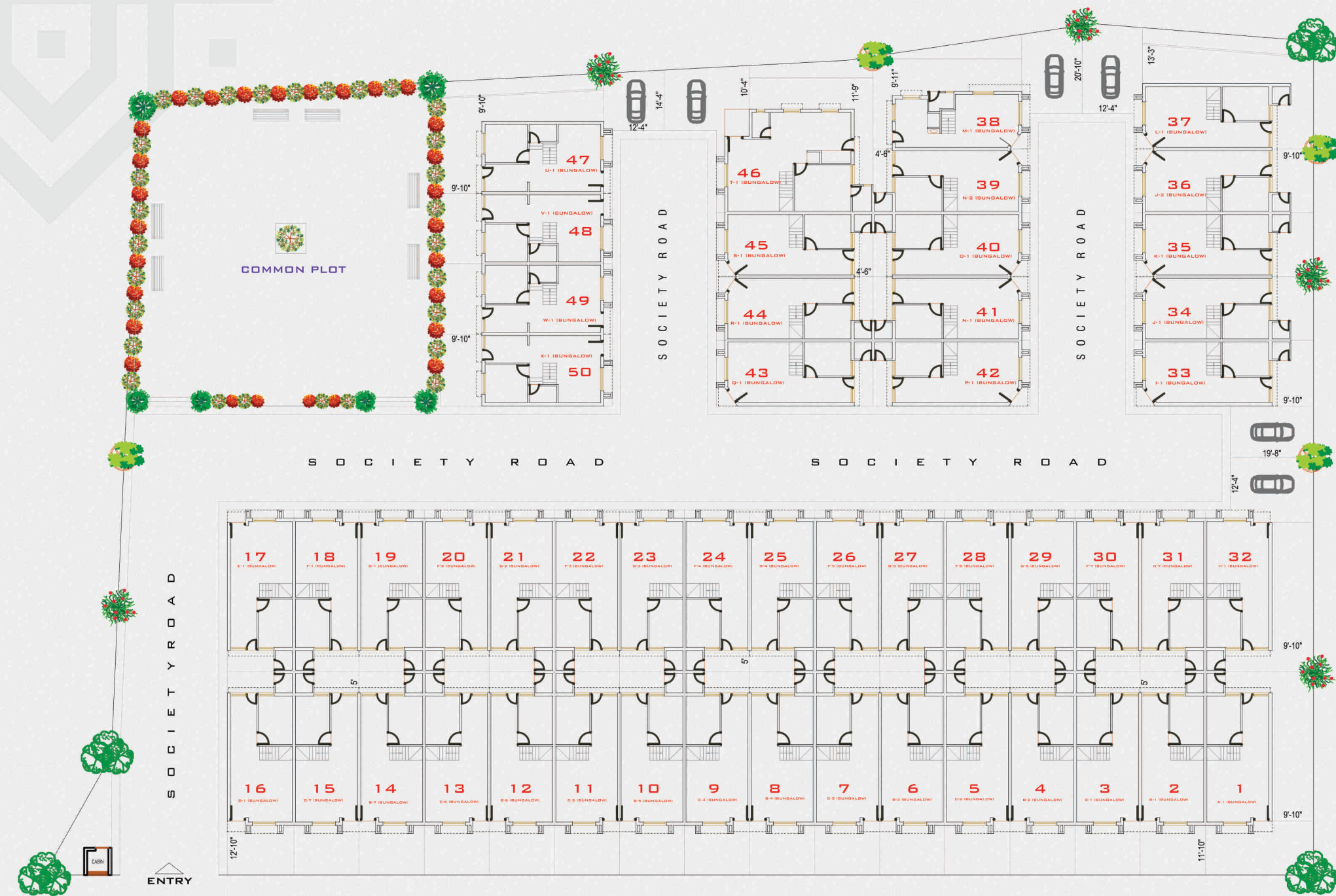
When I look below from so far above, I don't see things small or insignificant but a wonderful vast universe of my home.



VALENCIA

TYPICAL LAY OUT PLAN

3 & 4 BHK ULTRA LUXURIOUS BUNGALOWS



40' - 0" W I D E R O A D



VALENCIA

BUNGALOWS NO. 1 to 32

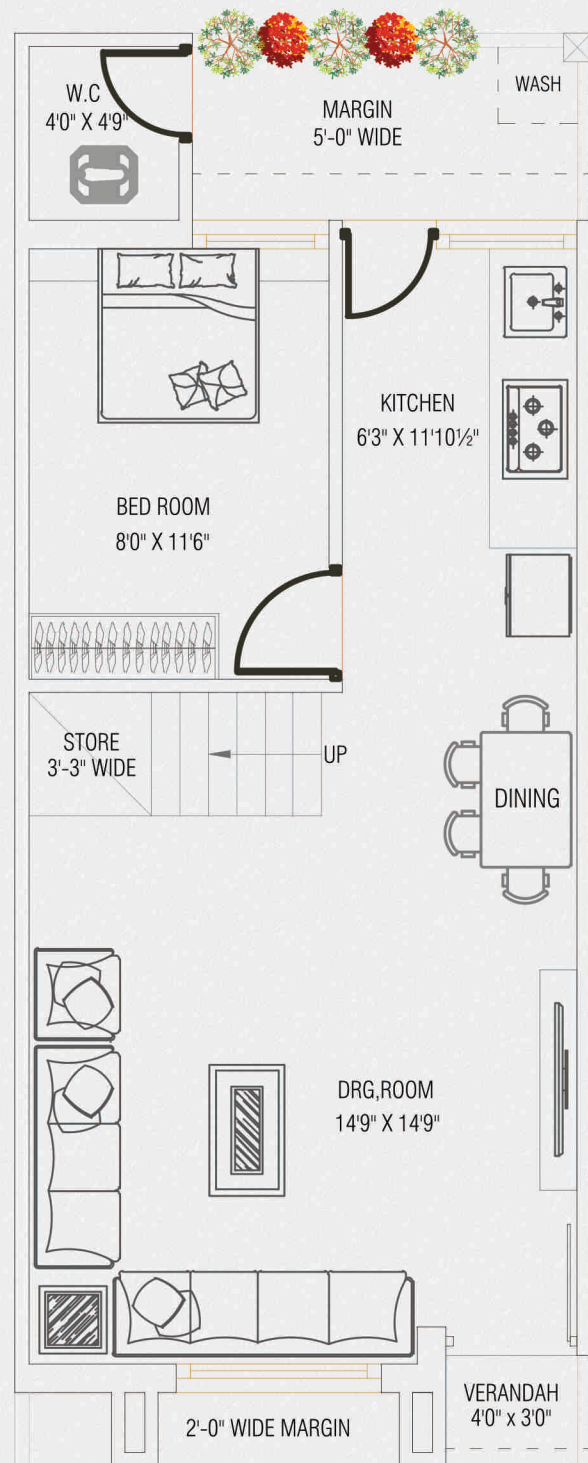
TYPE - A-1, D-1, E-1, H-1



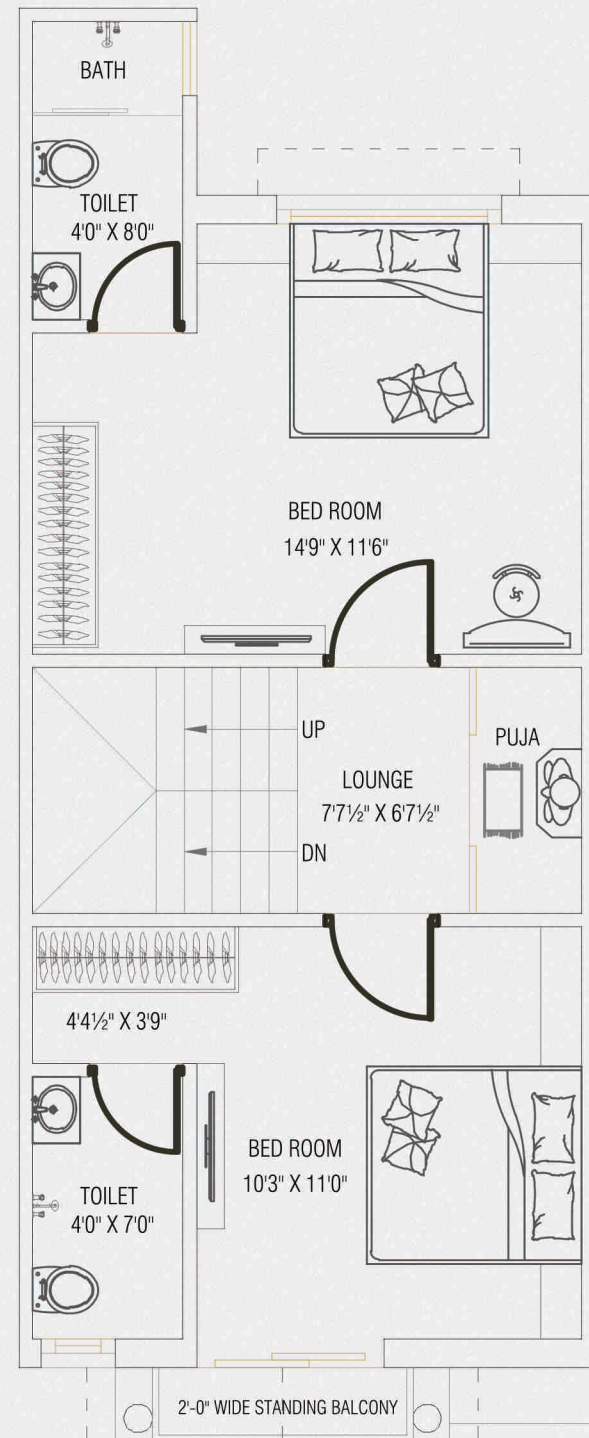
VALENCIA

BUNGALOWS NO. 1 to 32

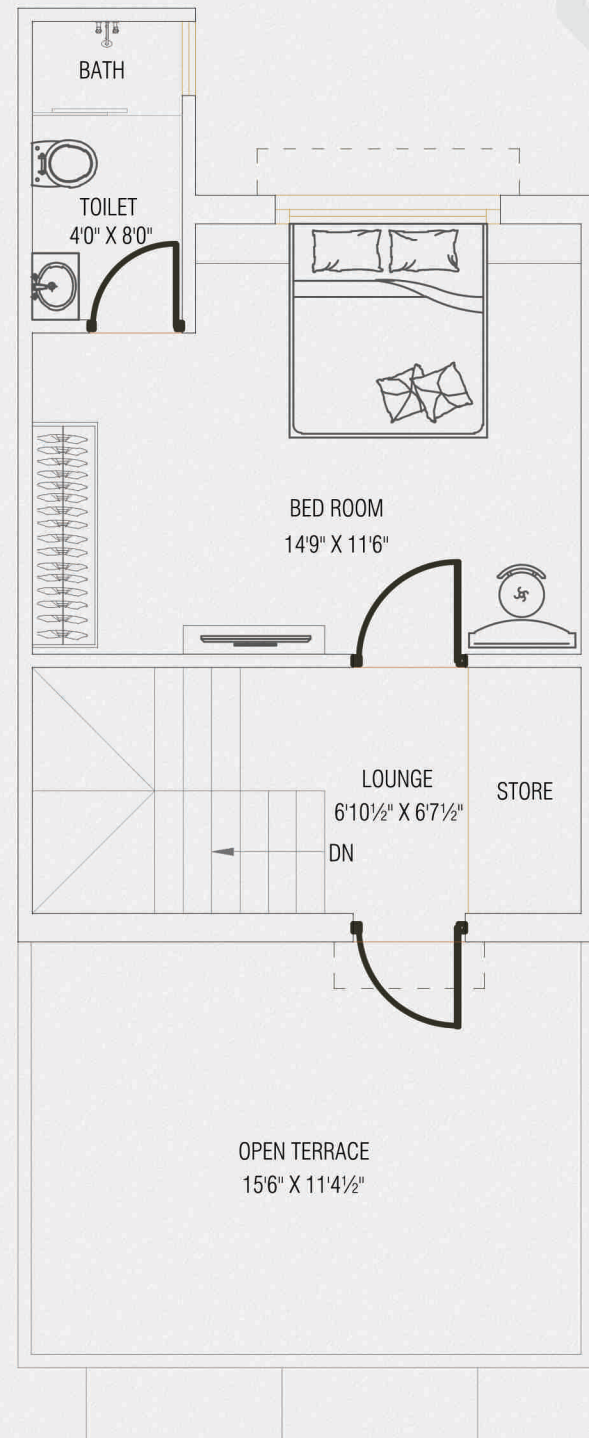
TYPE - B1 -7, D1-7, F1-7, G1-7



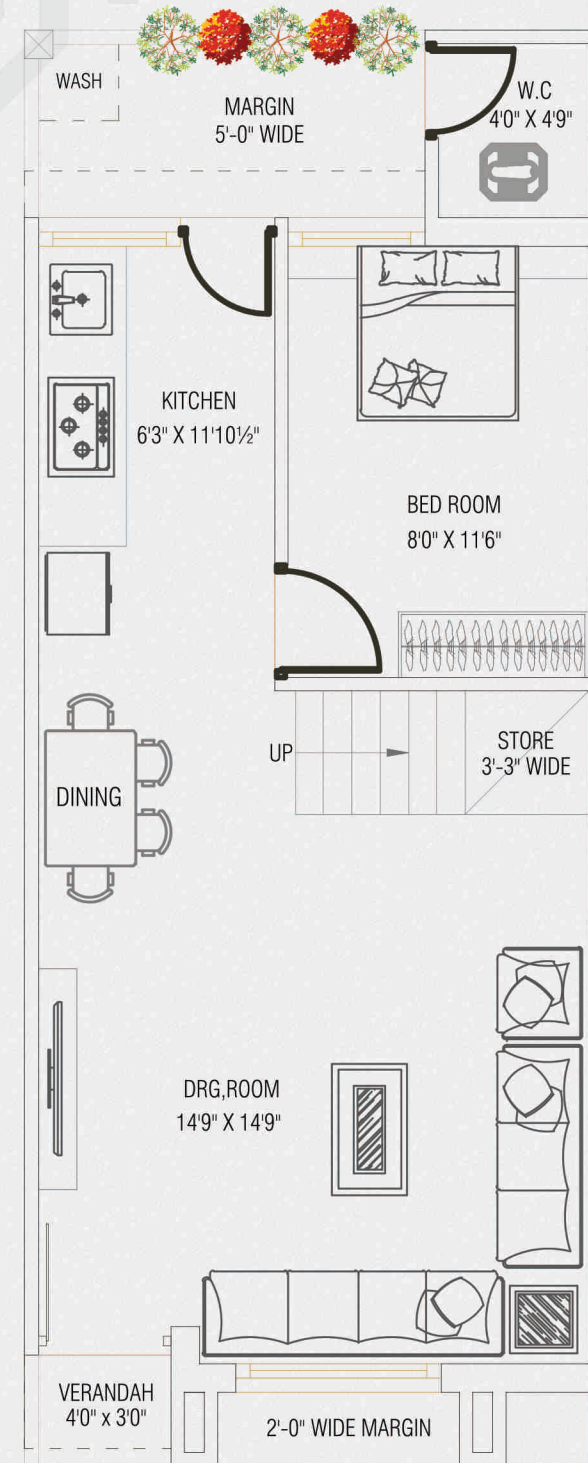
GROUND FLOOR PLAN



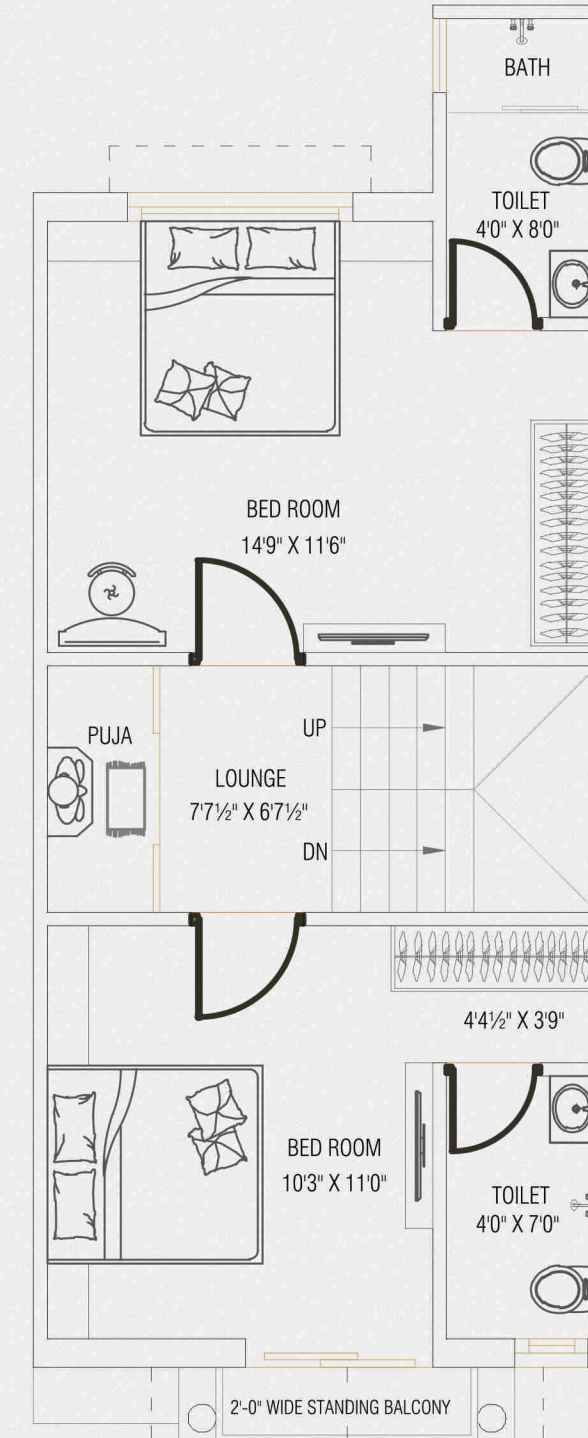
FIRST FLOOR PLAN



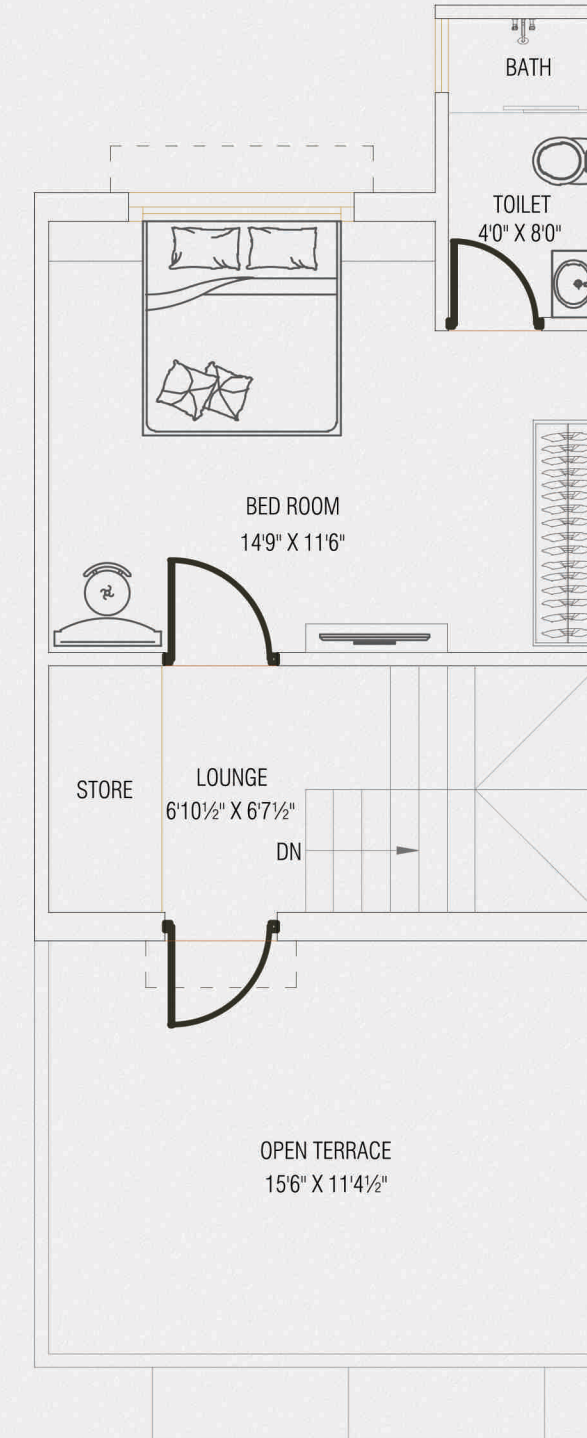
SECOND FLOOR PLAN



GROUND FLOOR PLAN



FIRST FLOOR PLAN



SECOND FLOOR PLAN



VALENCIA

BUNGALOWS NO. 33 to 37

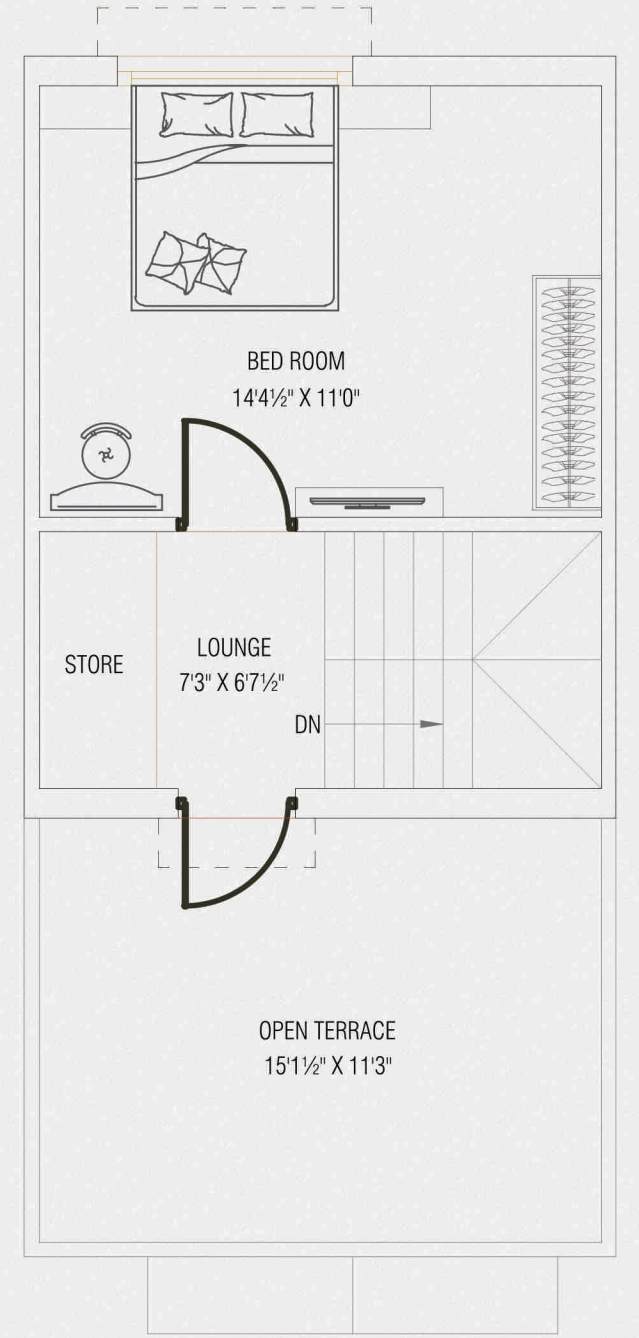
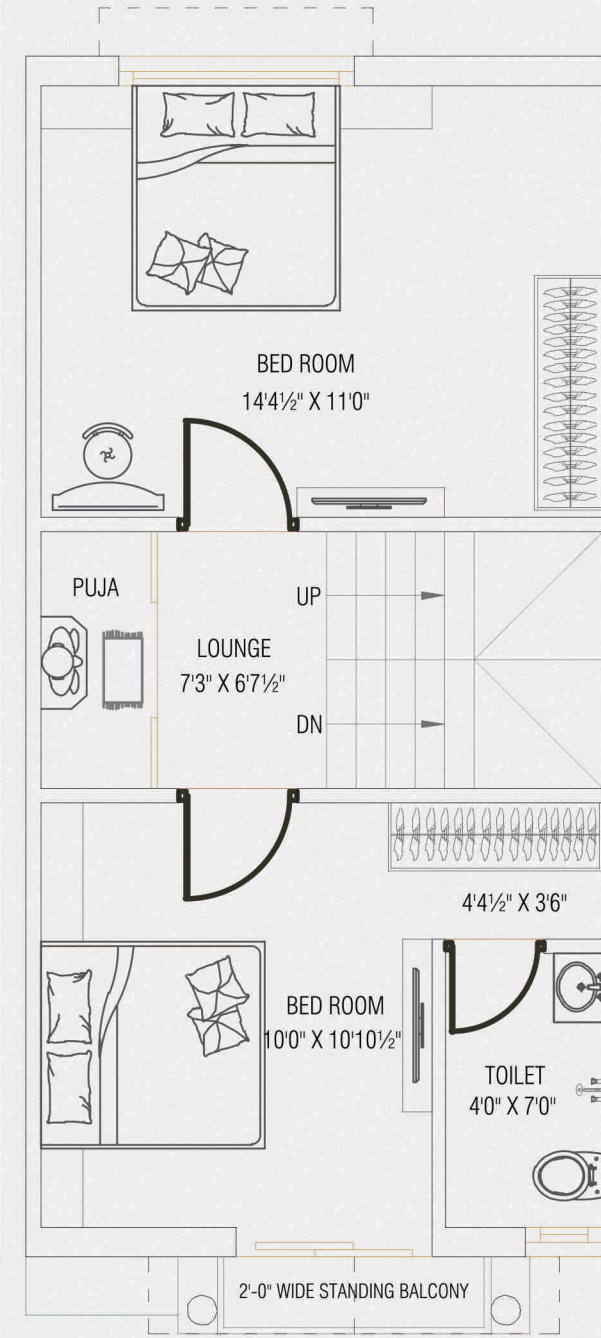
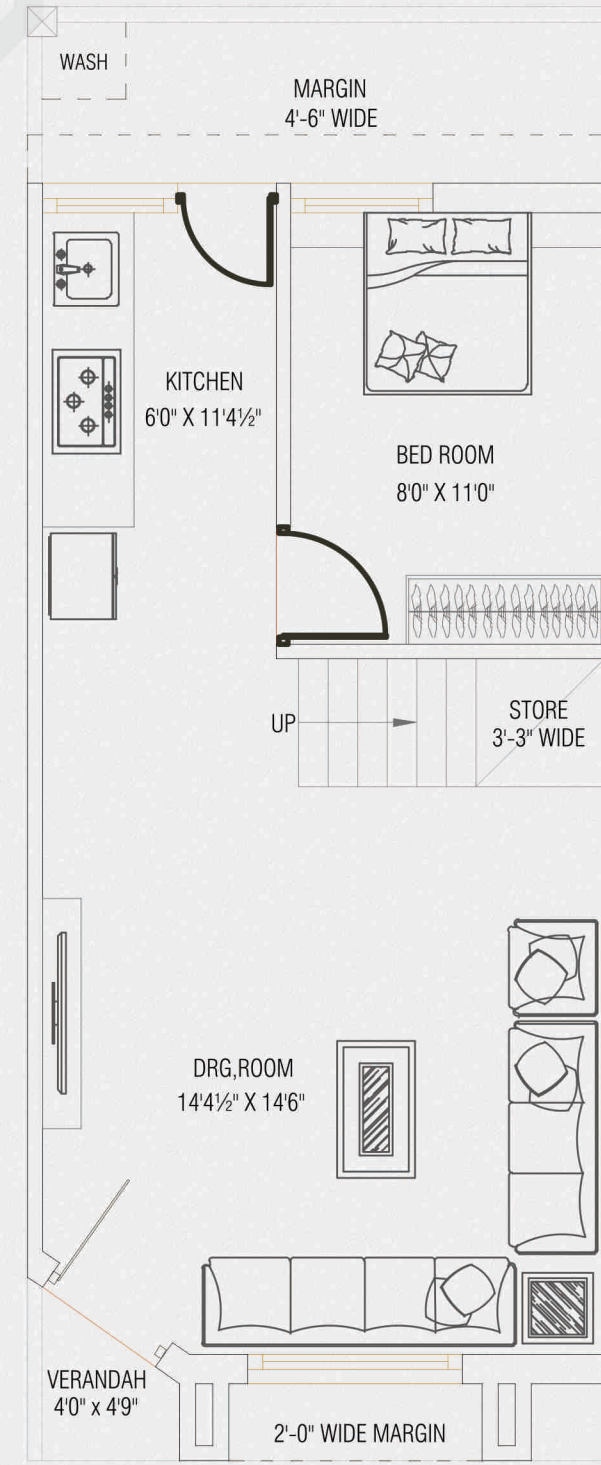
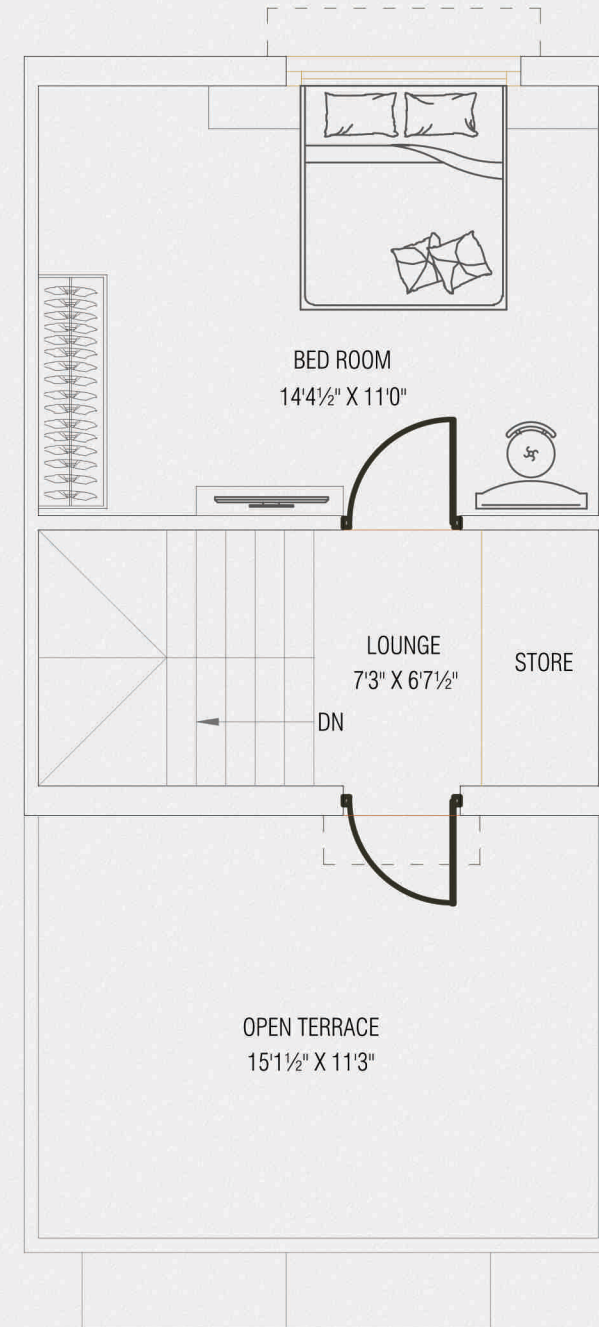
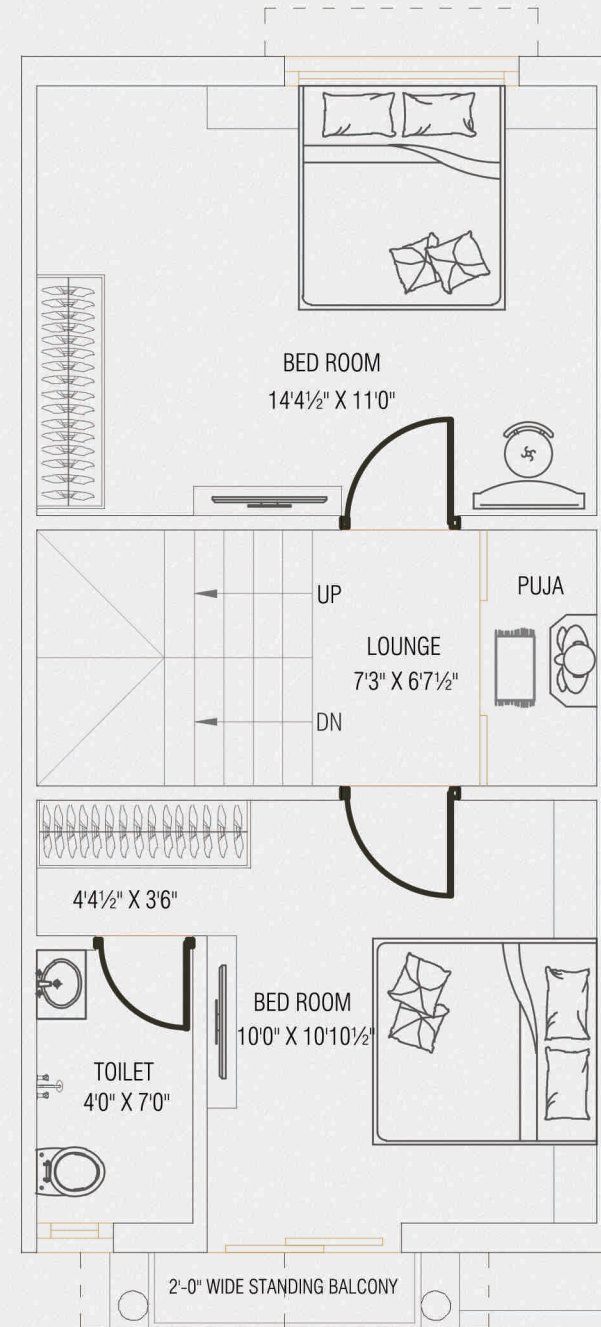
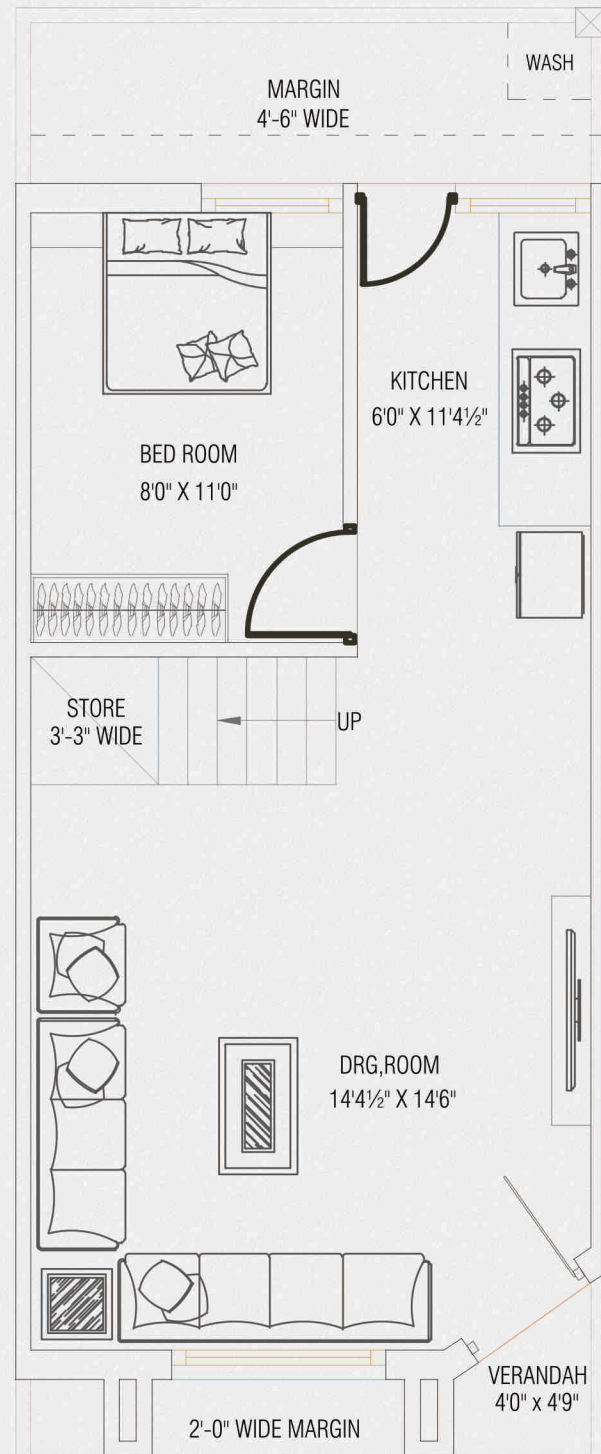
TYPE - I1, L1



VALENCIA

BUNGALOWS NO. 33 to 37

TYPE - J1 & J2, K

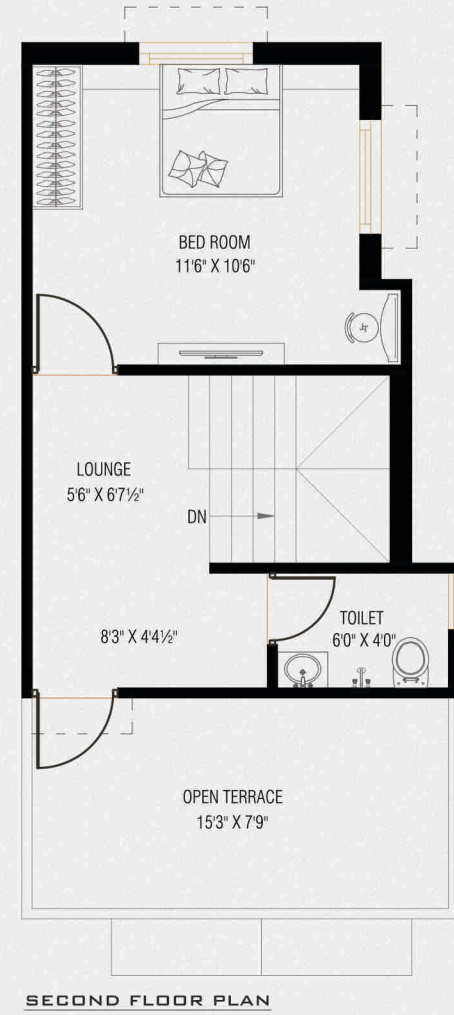
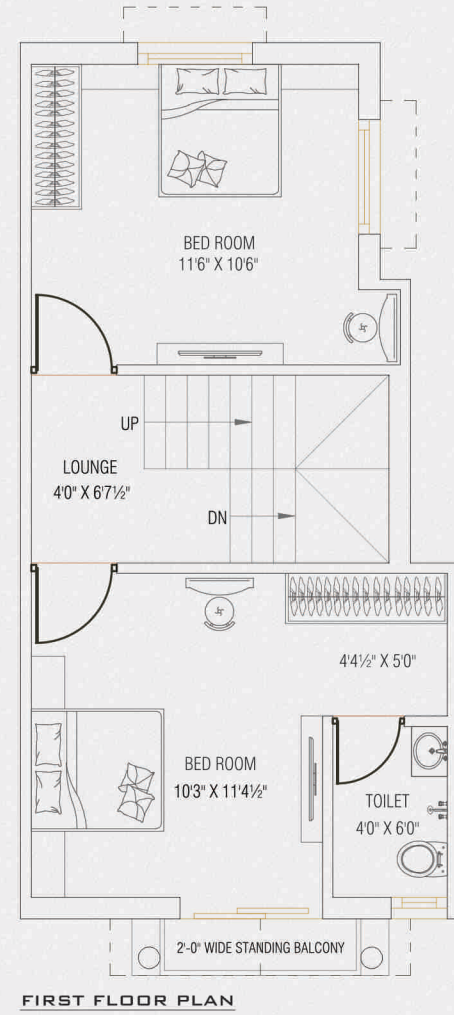
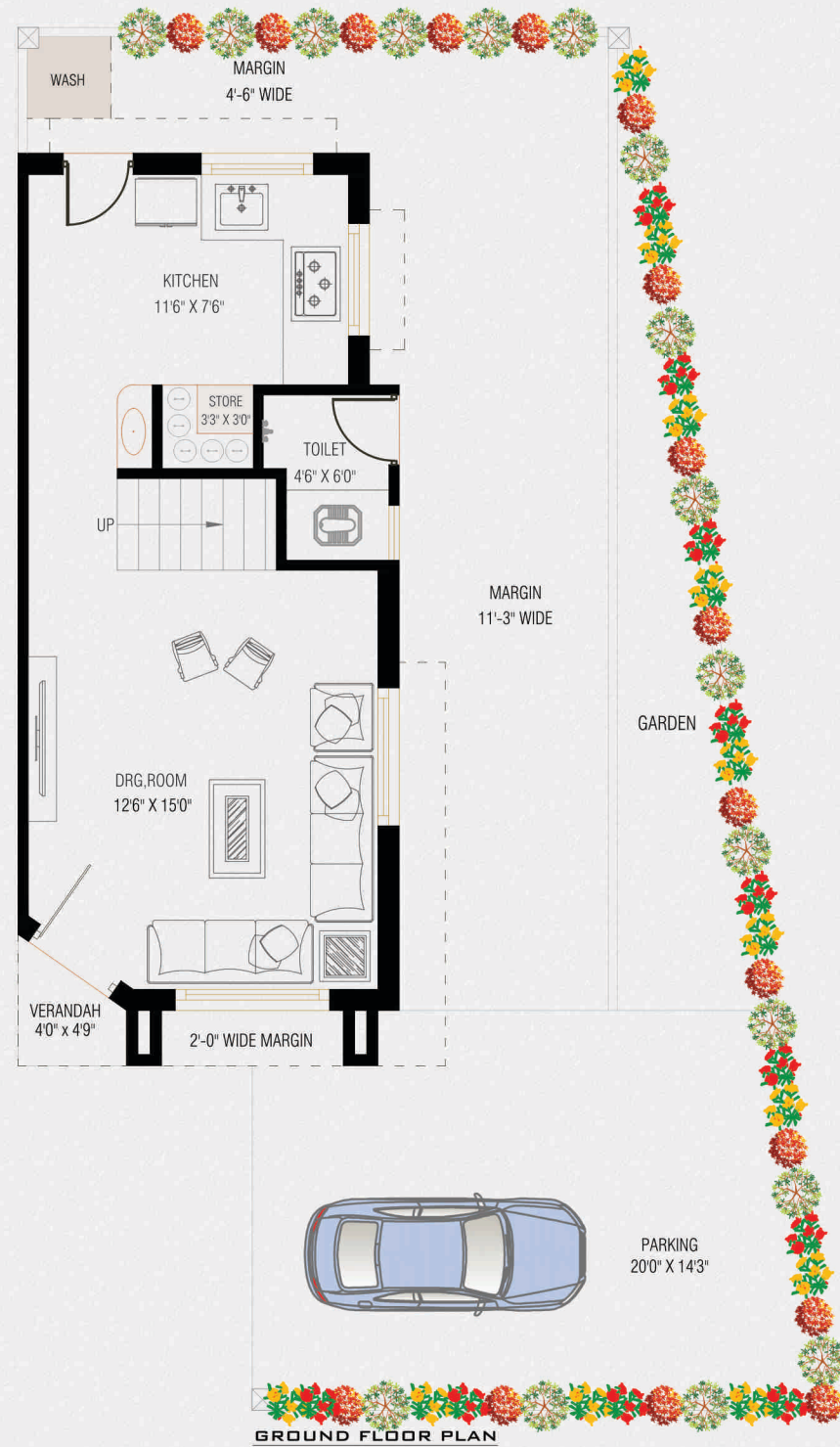




VALENCIA

BUNGALOWS NO. 38

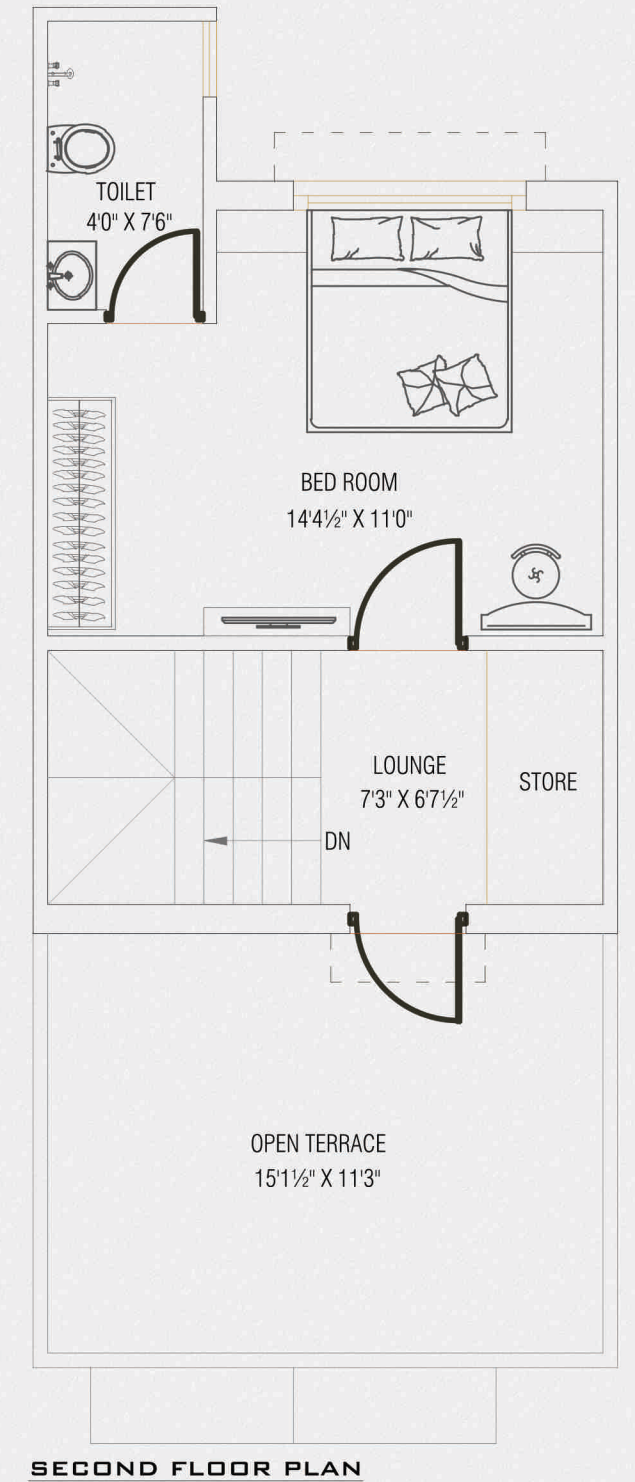
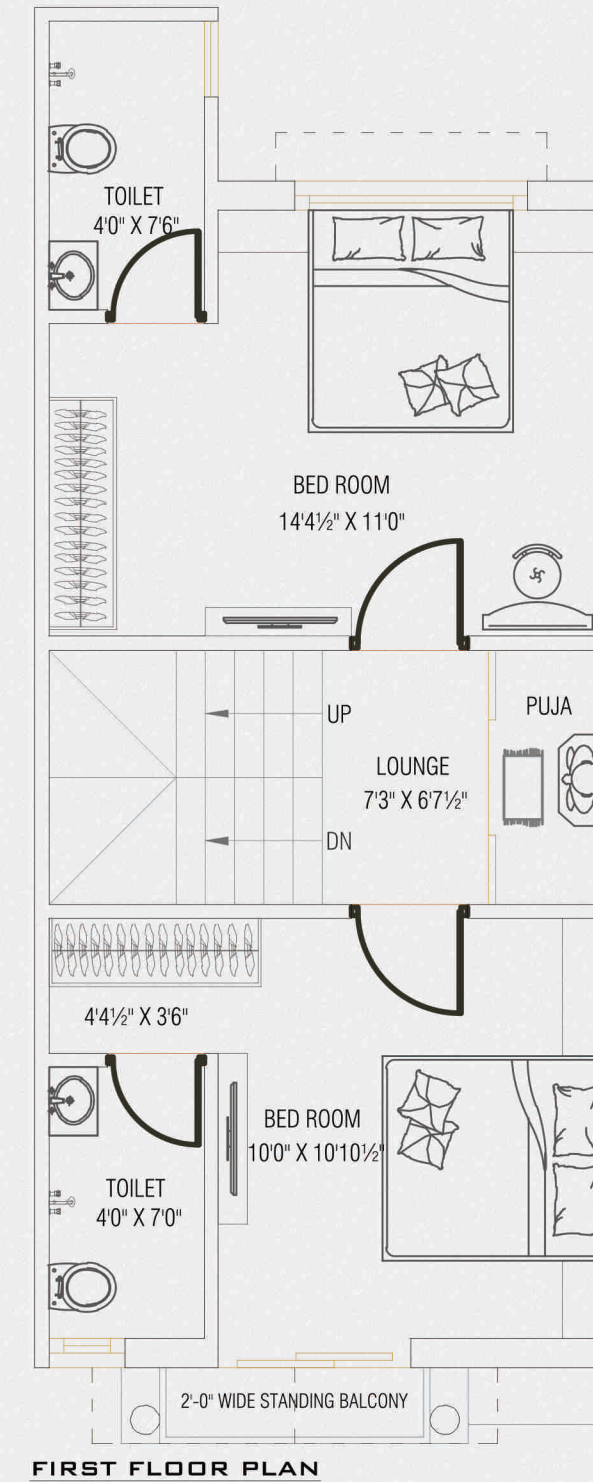
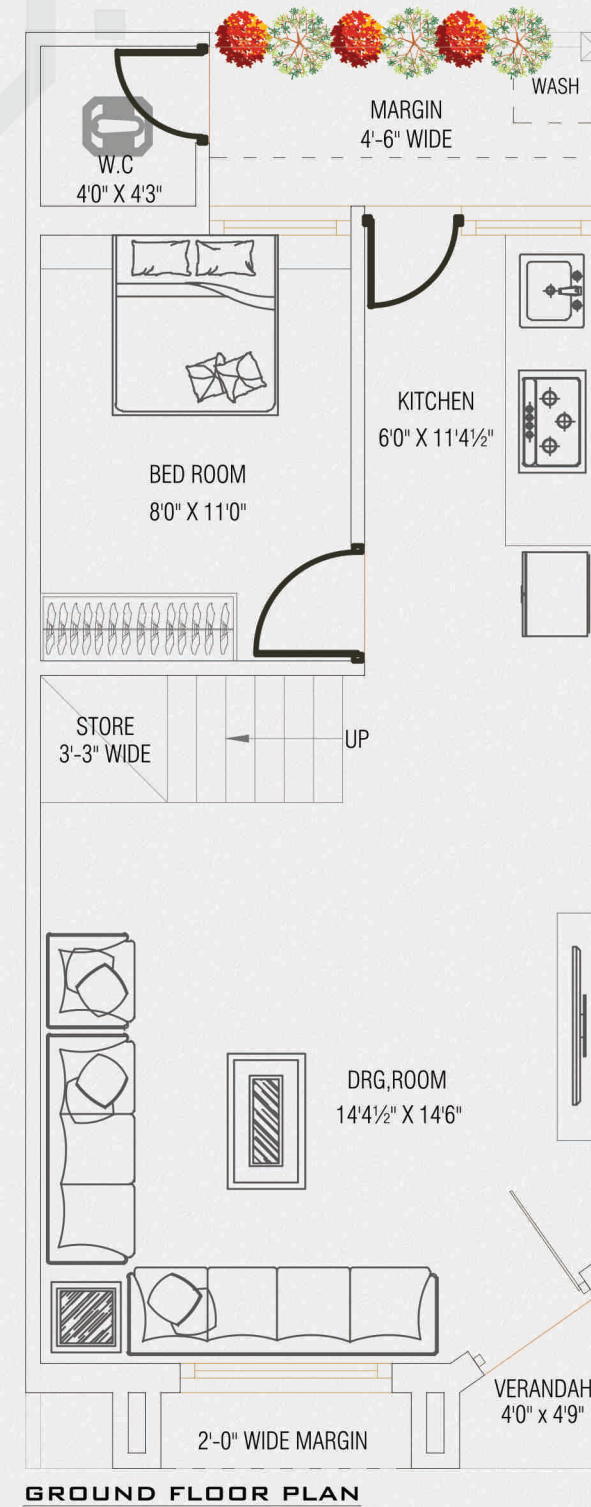
TYPE - M1



VALENCIA

BUNGALOWS NO. 39 TO 45

TYPE - N1&2, O1, R1, H1





VALENCIA

BUNGALOWS NO. 39 TO 45

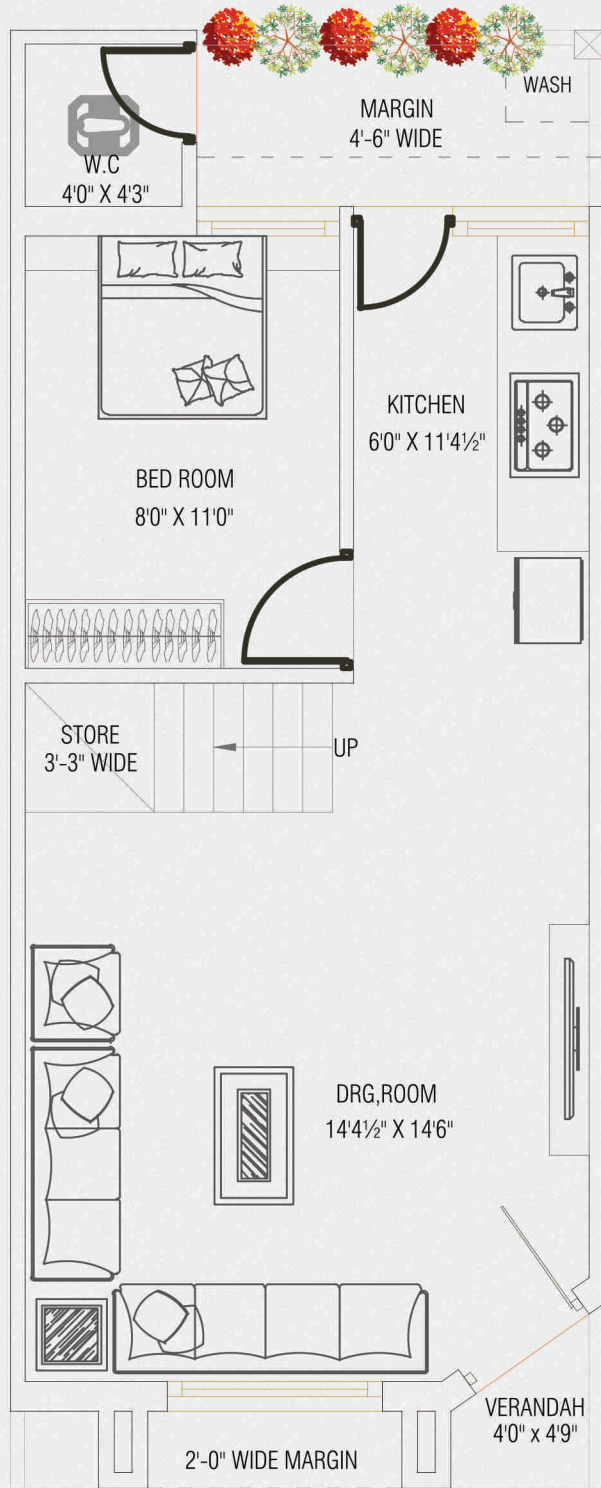
TYPE - P1, Q1



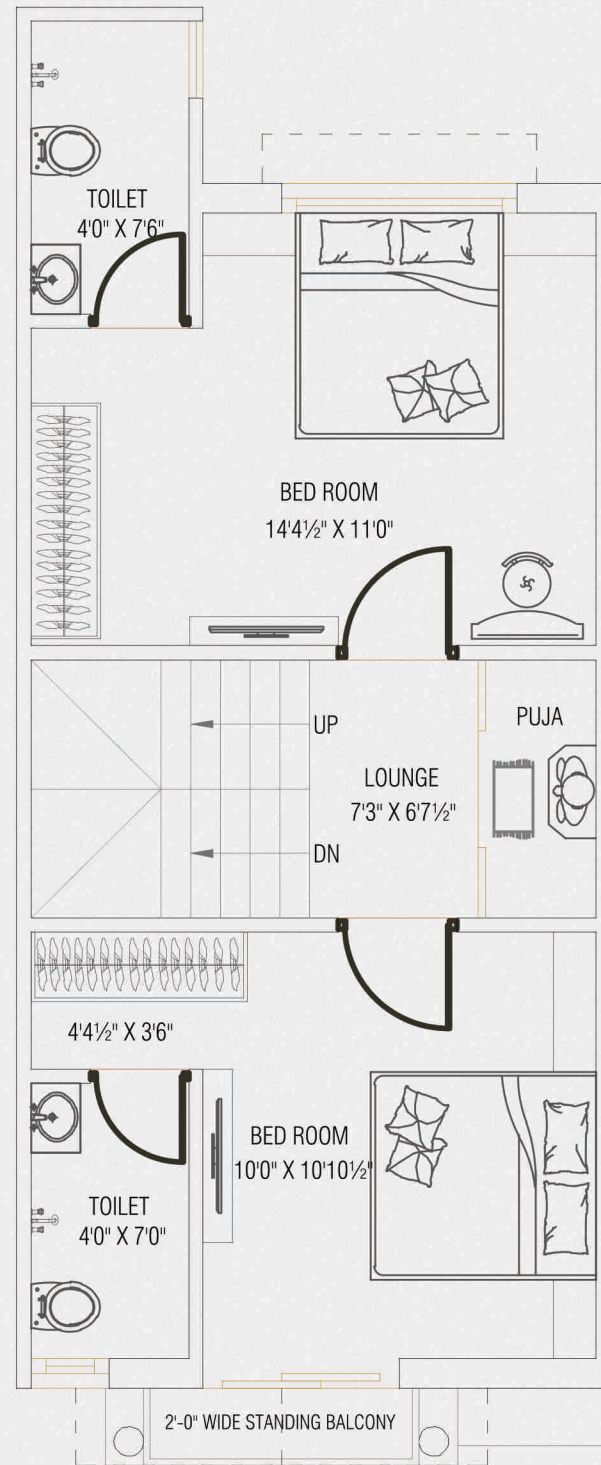
VALENCIA

BUNGALOWS NO. 46

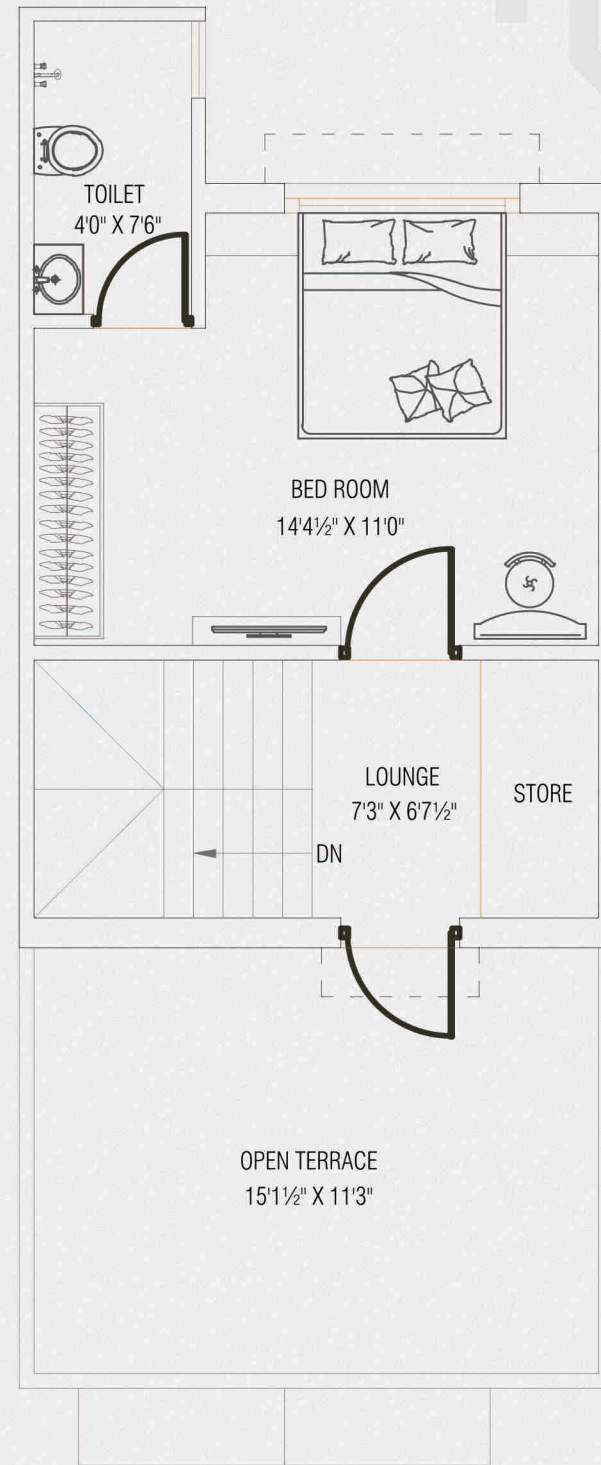
TYPE - T1



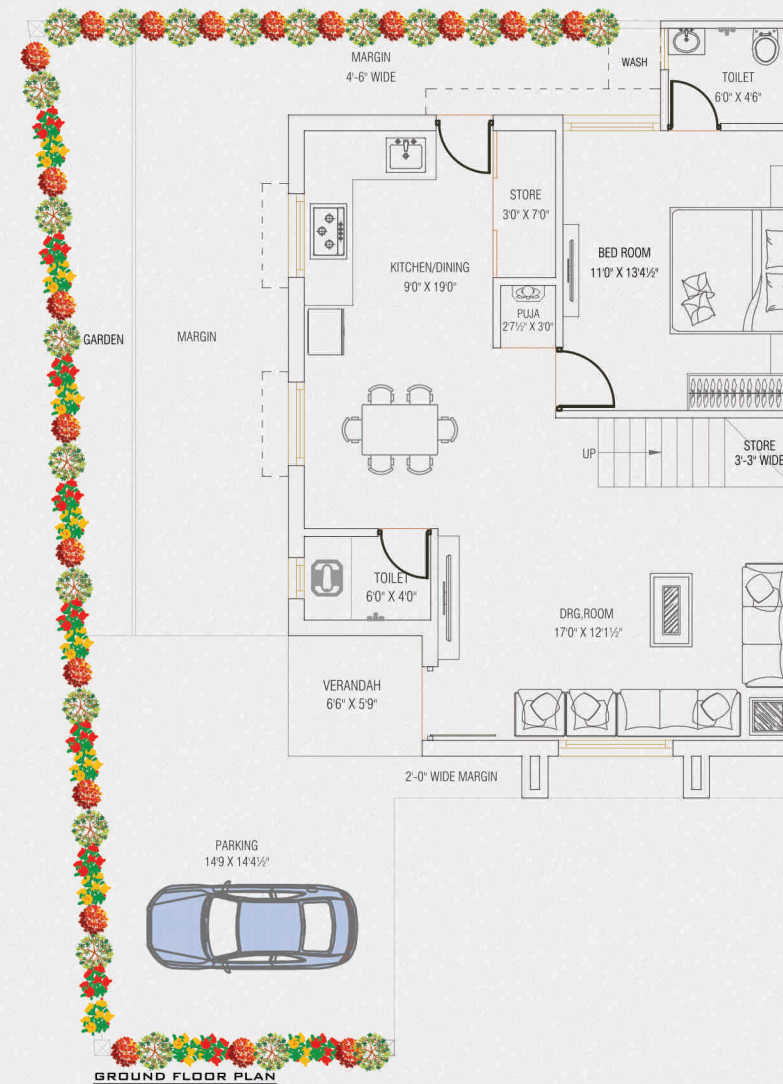
GROUND FLOOR PLAN



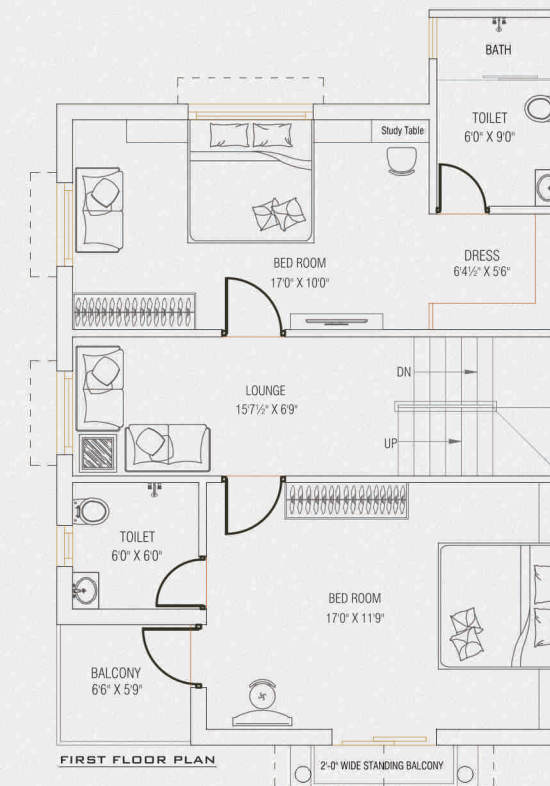
FIRST FLOOR PLAN



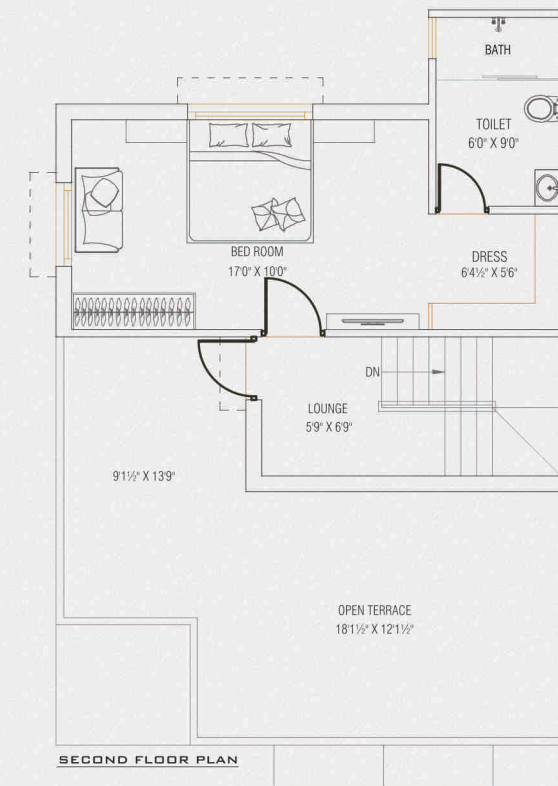
SECOND FLOOR PLAN



GROUND FLOOR PLAN



FIRST FLOOR PLAN



SECOND FLOOR PLAN



VALENCIA

BUNGALOWS NO. 47 TO 50

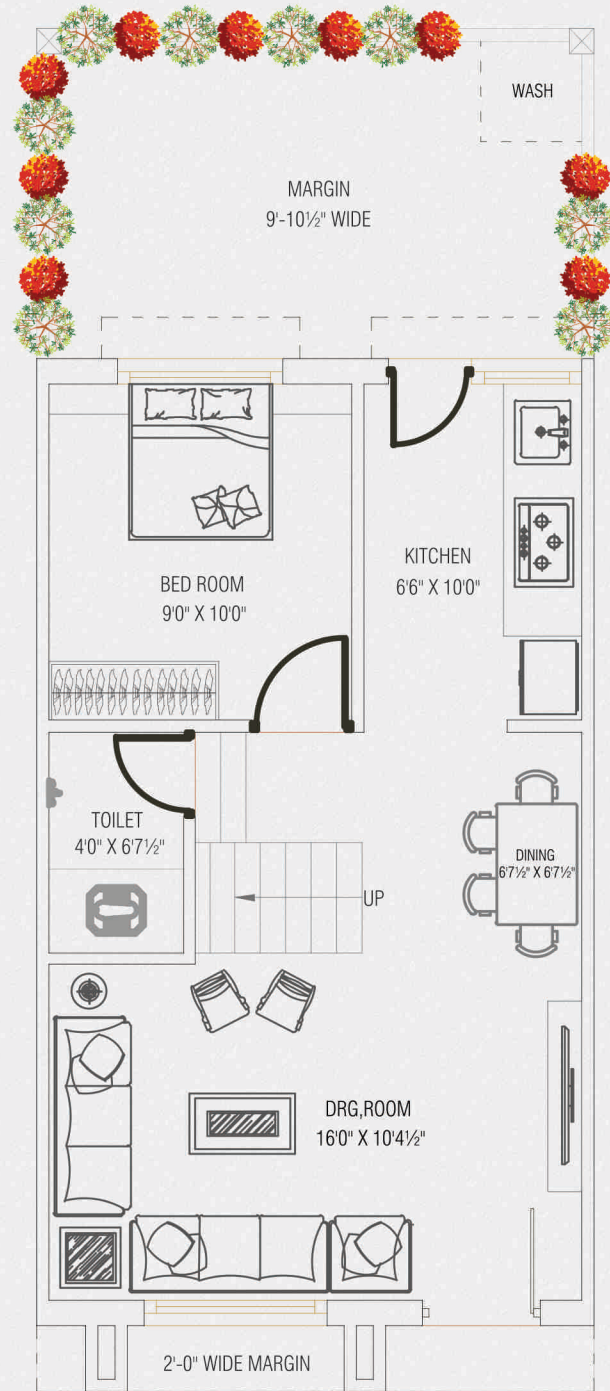
TYPE - U1 & X1



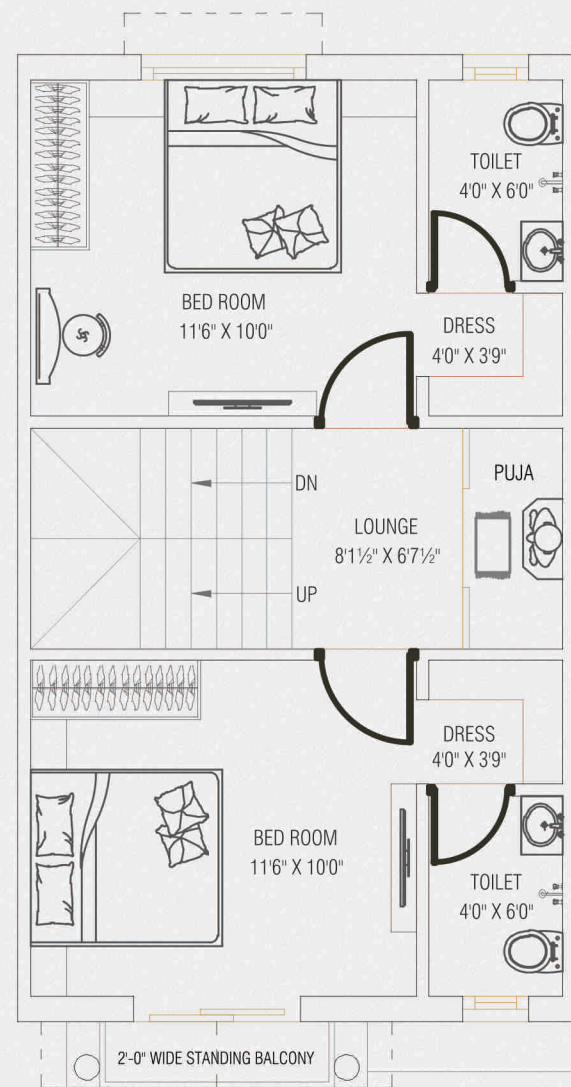
VALENCIA

BUNGALOWS NO. 47 TO 50

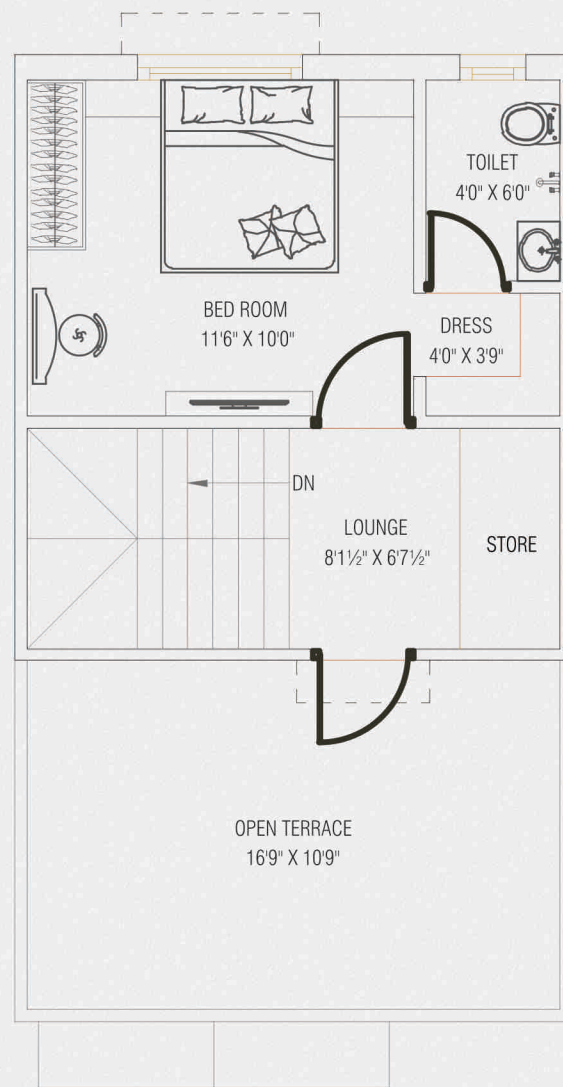
TYPE - V1 & W1



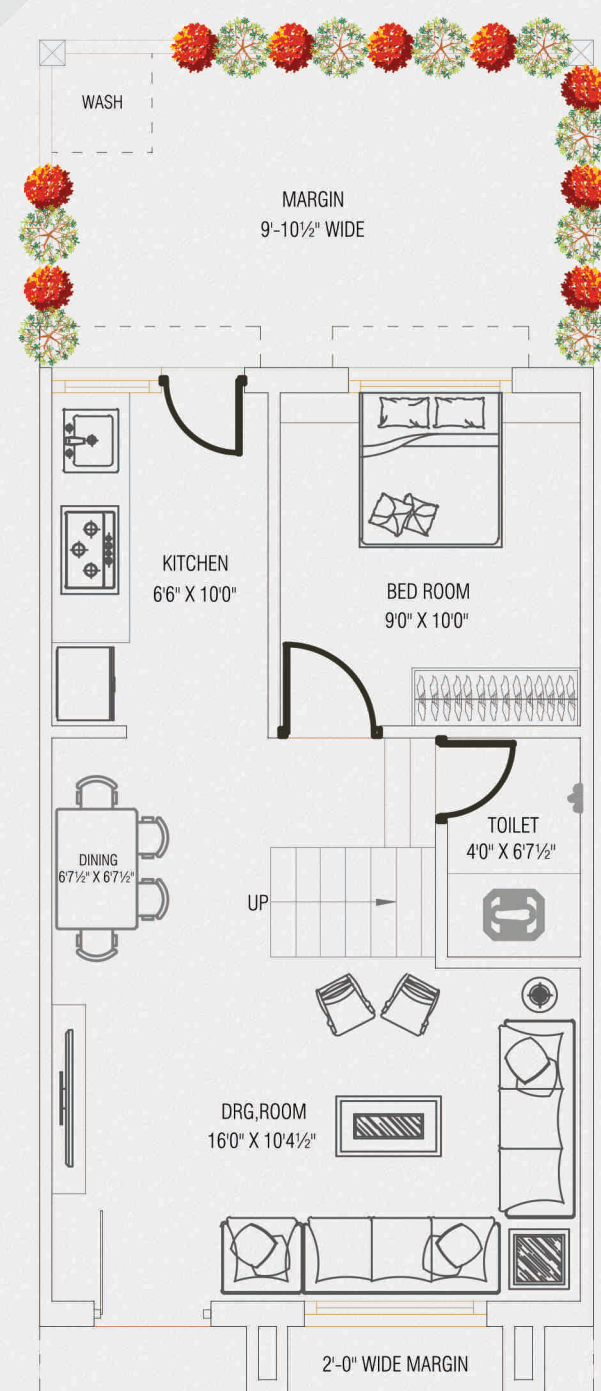
GROUND FLOOR PLAN



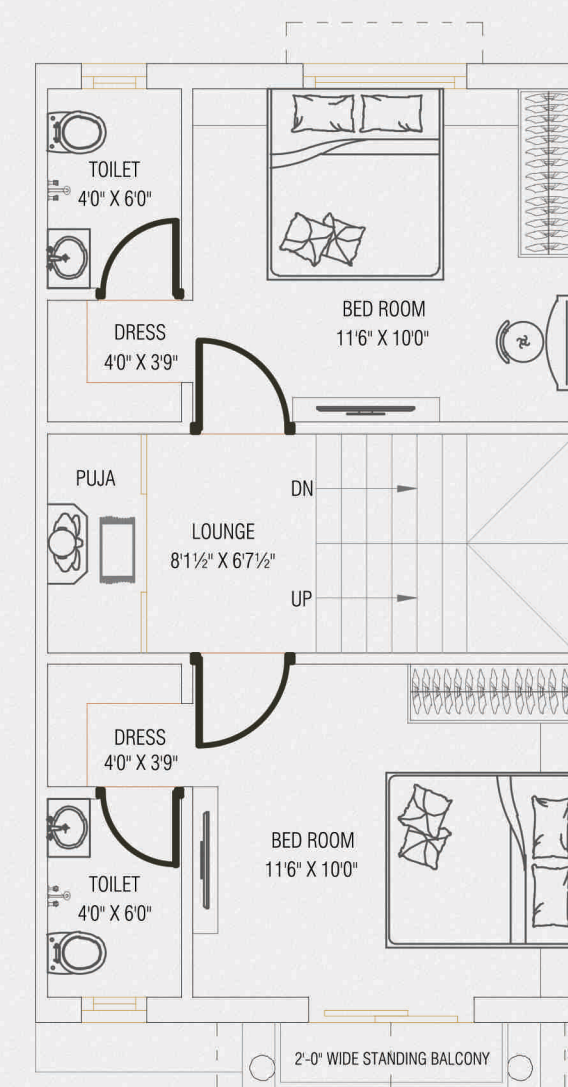
FIRST FLOOR PLAN



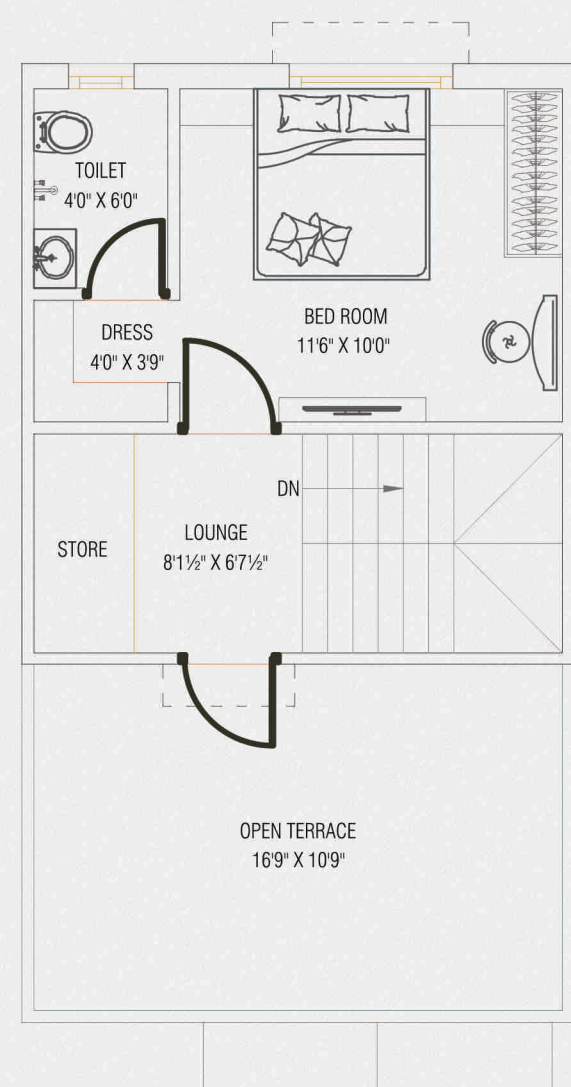
SECOND FLOOR PLAN



GROUND FLOOR PLAN



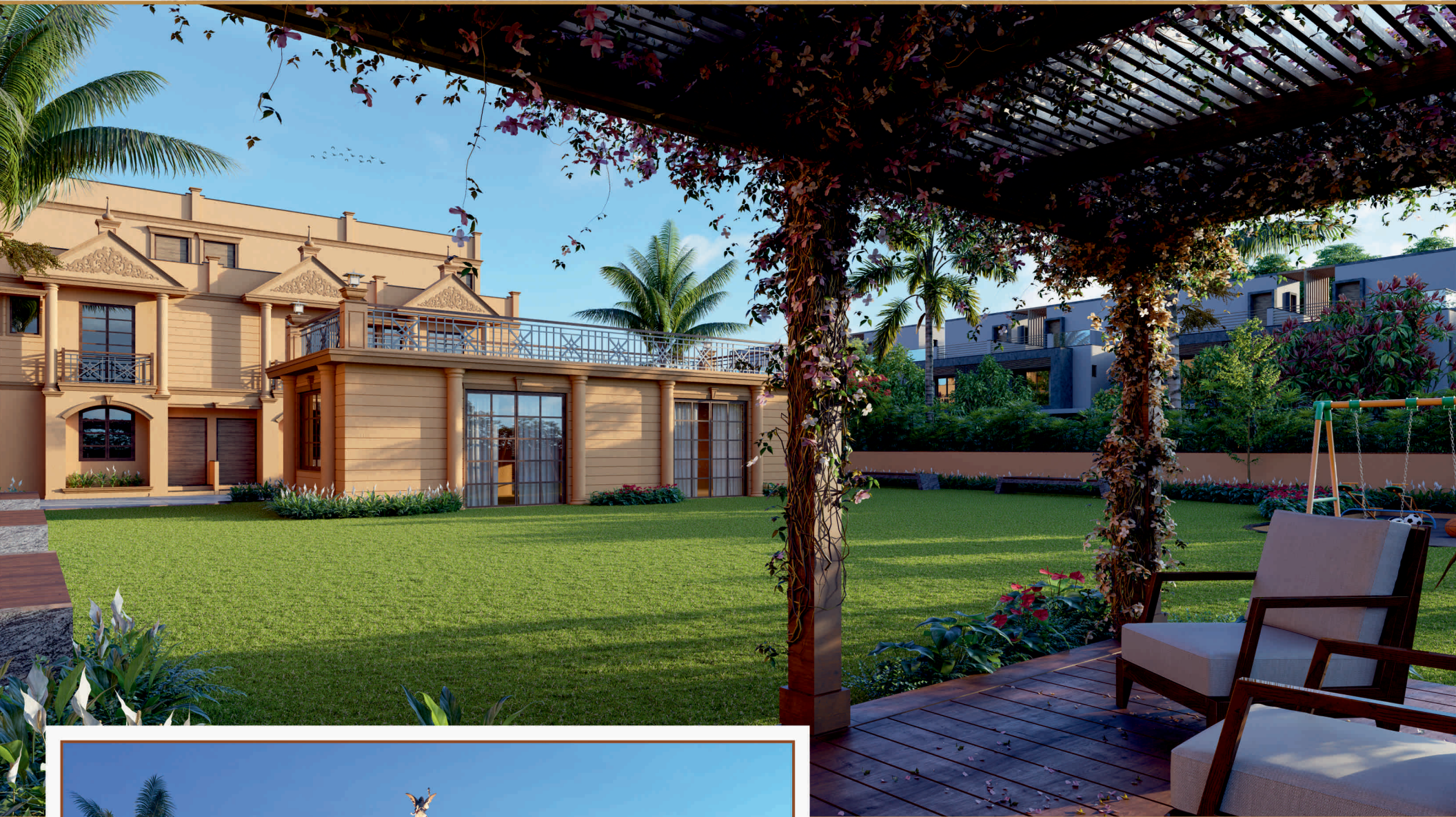
FIRST FLOOR PLAN



SECOND FLOOR PLAN

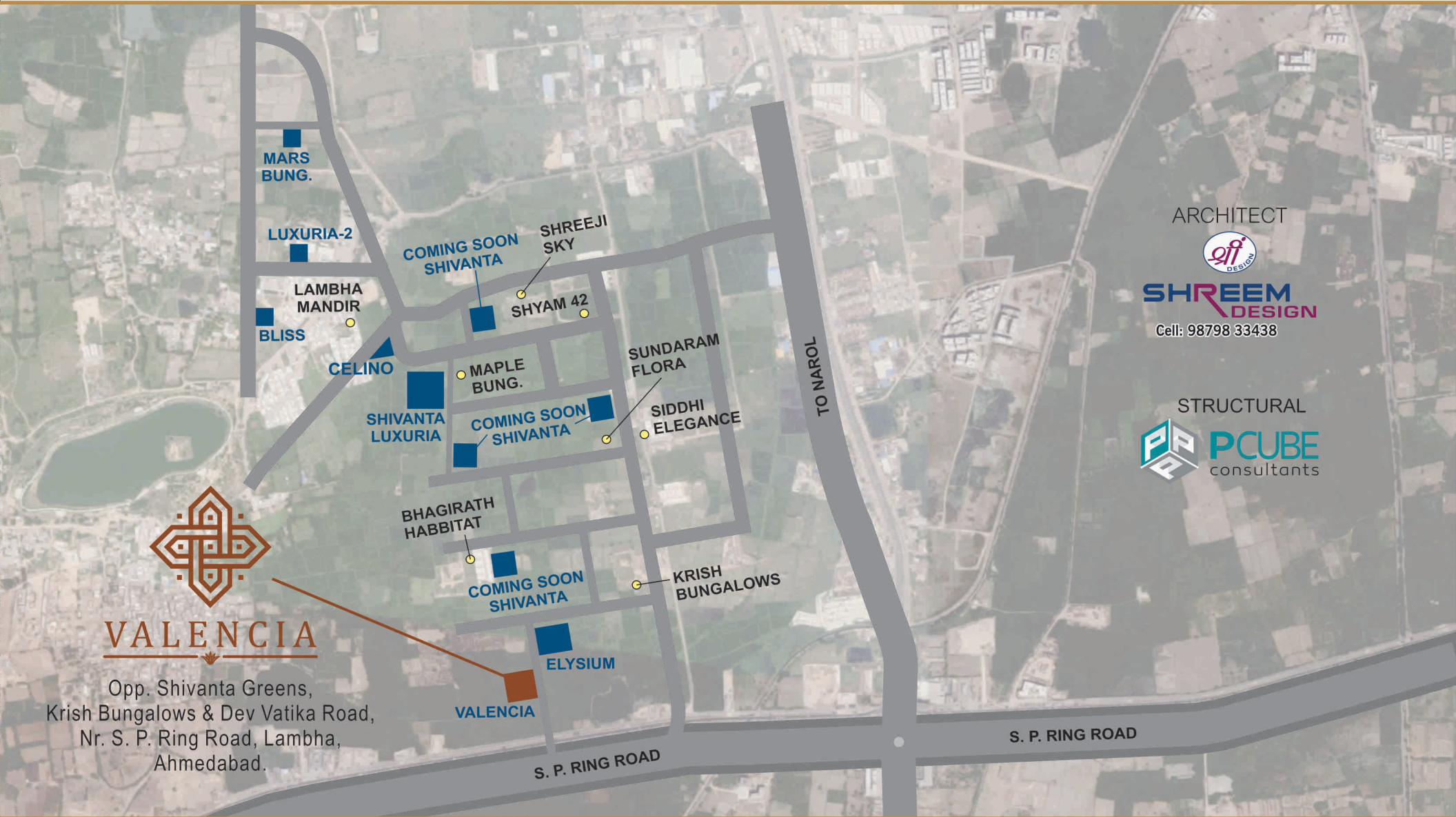


GJ 01 JV 5908



Notes

- All rights are reserved to developers for any changes in plan & specification.
- GEB, AMC, Stamp duty, Legal Charges, GST, Labourcess water connection & Initial maintenance contribution will be levied extra.
- Change in external elevation shall not be permitted.
- Internal changes shall be done only with prior permission and shall be charged extra in advance.
- Details & Dimensions in brochure are indicative & for the tentative representation only which should not be treated as legal documents.
- Possession of the Apartment shall be given only after full payment.
- Any additional charges or duties levied by the Govt./ Local authorities during of after the completion of the scheme will be borne by the purchaser.
- Irregular payment shall cause cancellation of booking. At the time of Cancellation of the booking payment shall be refunded only after the next available booking.



VALENCIA

Opp. Shivanta Greens,
Krish Bungalows & Dev Vatika Road,
Nr. S. P. Ring Road, Lambha,
Ahmedabad.

ARCHITECT
SHREEM DESIGN
Cell: 98798 33438

STRUCTURAL
PCUBE
consultants

SPECIFICATION

- FLOORING**
Vitrified tiles in flooring.
- KITCHEN**
Black granite platform with S.S. sink.
Colour galzed tiles.
- DOOR & WINDOWS**
Decorative main door & Aluminum Windows.

- BATHROOMS & TOILETS**
Glazed tiles in all bathrooms,
Concealed plumbing with good quality fittings
Water proofing treatment in all toilets and wash area.
- ELECTRIFICATION**
Concealed copper wiring with standard accessories,
TV point drawing room Water purifier & fridge point
in kitchen, Geyser point in bathroom and
AC point in 1 bed room.

- WALL FINISH**
External sand face plaster with acrylic paints,
Internal mala plaster with wall putty.
- TERRACE**
China mosaic flooring with water proofing.
- STRUCTURE**
RCC frame structure design.