

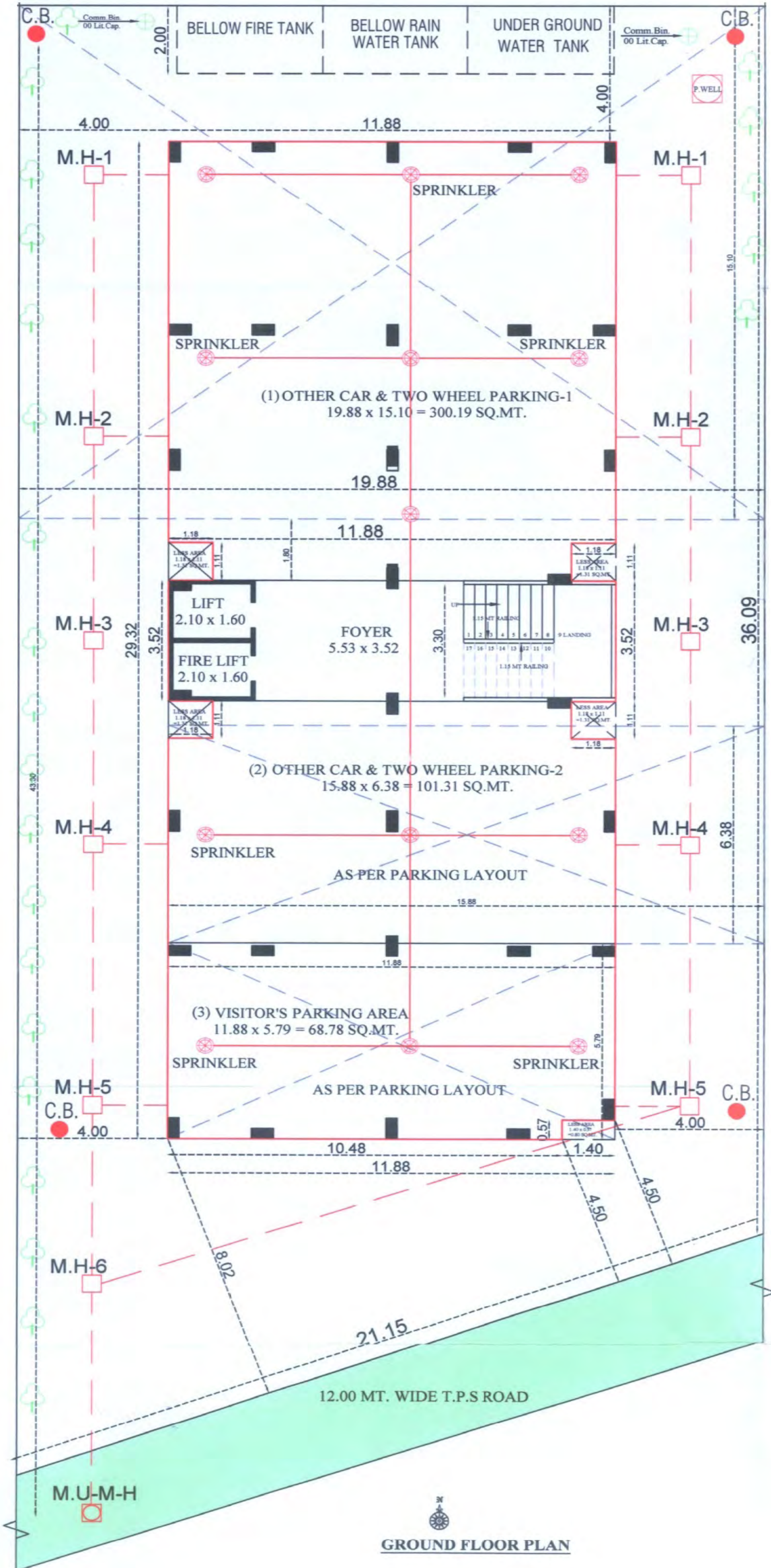
SAKET HEAVEN

DEVELOPED BY:
SAKET BUILDCON

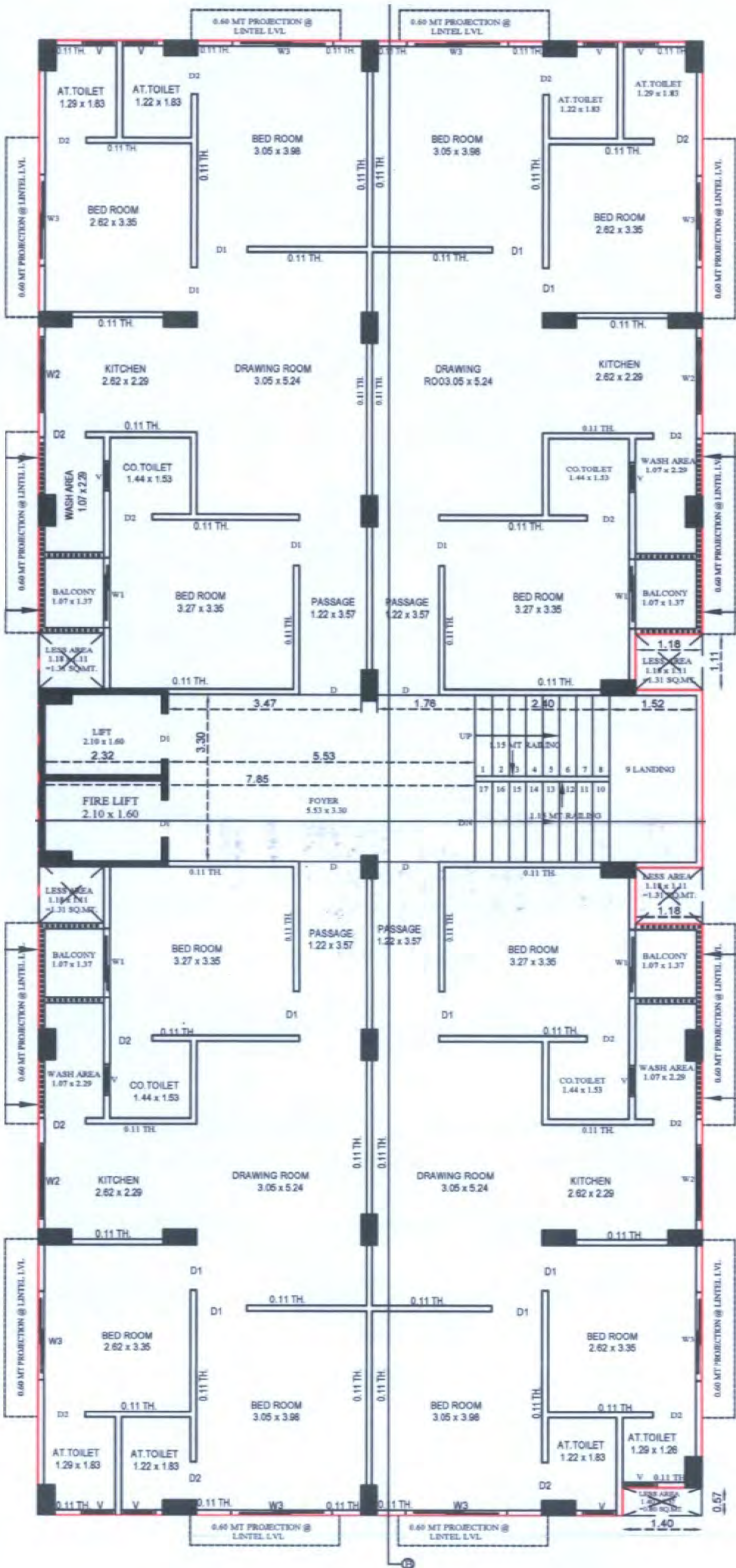


SAKET
HEAVEN





GROUND FLOOR PLAN



1st To 7th - TYPICAL FLOOR PLAN



SAKET
HEAVEN









SPECIFICATIONS



FLOORING

- Premium quality digital/vitrified tile flooring in all rooms.
 - Premium quality tiles upto lintel level in kitchen & all bathrooms with different design.
-



COLOR

- Inside Putty
 - Paint in Exterior Weather sealed
-



KITCHEN

- Premium quality granite platform with SS sink.
 - Designer tiles above platform upto beam bottom level.
-



TOILET

- Premium quality sanitary ware & fittings in all toilets.
- Designer Glazed Tiles of quality Company



DOOR

- Flush doors in internal area with wooden framing, Premium quality SS/BRASS hardware & handles.
 - Doors with high quality locking arrangements.
-



PLUMBING

- Premium quality UPVC pipes for water supply & CPVC pipes.
 - Concealed plumbing for hot & cold mixture for shower
-



ELECTRICITY

- A/C points in bed rooms.
 - 1-phase Concealed ISI copper wiring with modular switches.
-



ELEVATORS

- Stainless Steel Door Elevator with cabin Safety Sensors for Maximum safety and Reliability.

SITE ADDRESS: SAKET HEAVEN, NANA CHILODA, GANDHINAGAR

Project architect:

Hg designs
Ahmedabad

Structural consultant:

Harisingh g. ratan
Ahmedabad

Rere website: <https://gujrera.gujarat.gov.in/>

RERA No. PR/GJ/_____