



એક અનોખી “જીંદગી”  
માટે અનોખું “ઘર”

**વૈનાયક**  
RESIDENCY-2  
1 BHK Divine Living





Vitalys  
वेडिसेल २



# Flat Specifications

## STRUCTURE

R.C.C Frame Structure.

## FINISHES

**External** - Double coat Plaster with Weatherproof Paint.

**Internal** - Single coat Mala.

## FLOORING

Vitrified Tiles in Living, Dinning, Kitchen & all Bedrooms.

## KITCHEN

Granite Top, SS sink, Tiles upto Lintel Level.

## DOORS

**Main Door** - Decorative Flush Door with Frame.

**Other Doors** - Flush Doors with Frame.

## WINDOWS

Sliding Aluminum Sections windows.

## TOILETS

Tiles upto lintel level, Plumbing fitting with good quality pipes.

Bath room Accessories - Good Quality

Sanitary ware - Good Quality

## ELECTRICAL

Concealed Copper wire Fittings.

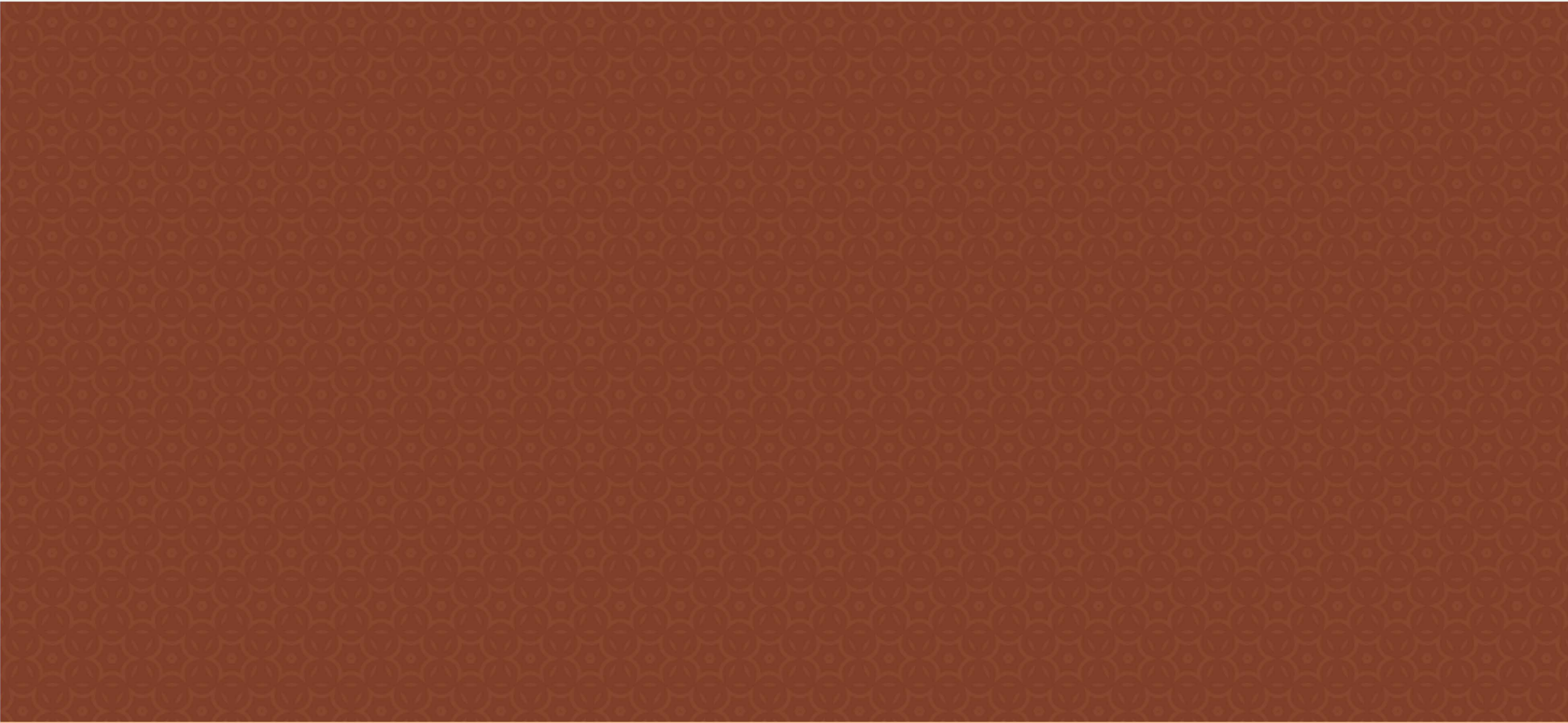
# Amenities

- Security & CCTV Surveillance on Ground Area.
- Spacious Entrance Lobby.
- Ground level Parking.
- Two Elevators in each building.
- 24 hour water supply.
- Fire Safety

# Notes

• External or Internal changes shall not be allowed. • Rights are reserved by developers to make any changes in Plan, elevation and other details there in to comply with Statutory Regulations. Which shall be binding to all Members. • GEB, Legal Expenses, Stamp duties, Registration Fees, GST or any other charges / taxes levied by Govt. / Semi Govt. or any other Authority shall be borne by Members. • Any additional liabilities due to change in Govt. bye laws, Rules, Regulations, Stamp Duties, GST or any other Taxes / Charges / Fees shall be borne by the Members. • All dues including maintenance deposit amount shall be deposited by member before hand over the possession. • Furniture & Fixtures Shown are only indicating the arrangement, not to be provided. • The dimensions shown in the brochure are approximate and calculated from unfinished surfaces and are rounded off to nearest whole number. • All Graphical images given in this brochure are for representation purpose only, it may change according to architect design. • This brochure is for information Purpose only it does not part of the agreement or any legal documents. • Subject to Ahmedabad Jurisdiction.





a project by :  
**KUSH**  
INFRA



Survey No: 1483/1 , 1483/2 , F.P No: 350/1 , 350/2  
Nr. Omshanti Bungalows, Vatva-Canal Road, Vatva, Ahmedabad-382440  
CONTACT : 81 55 88 66 11

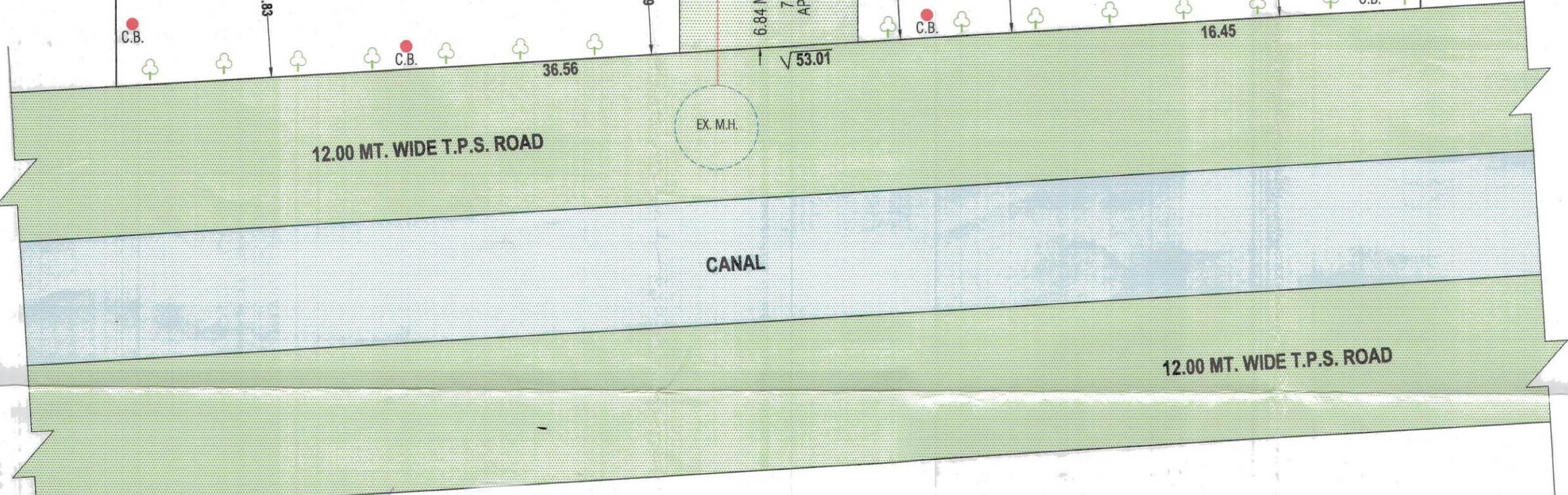
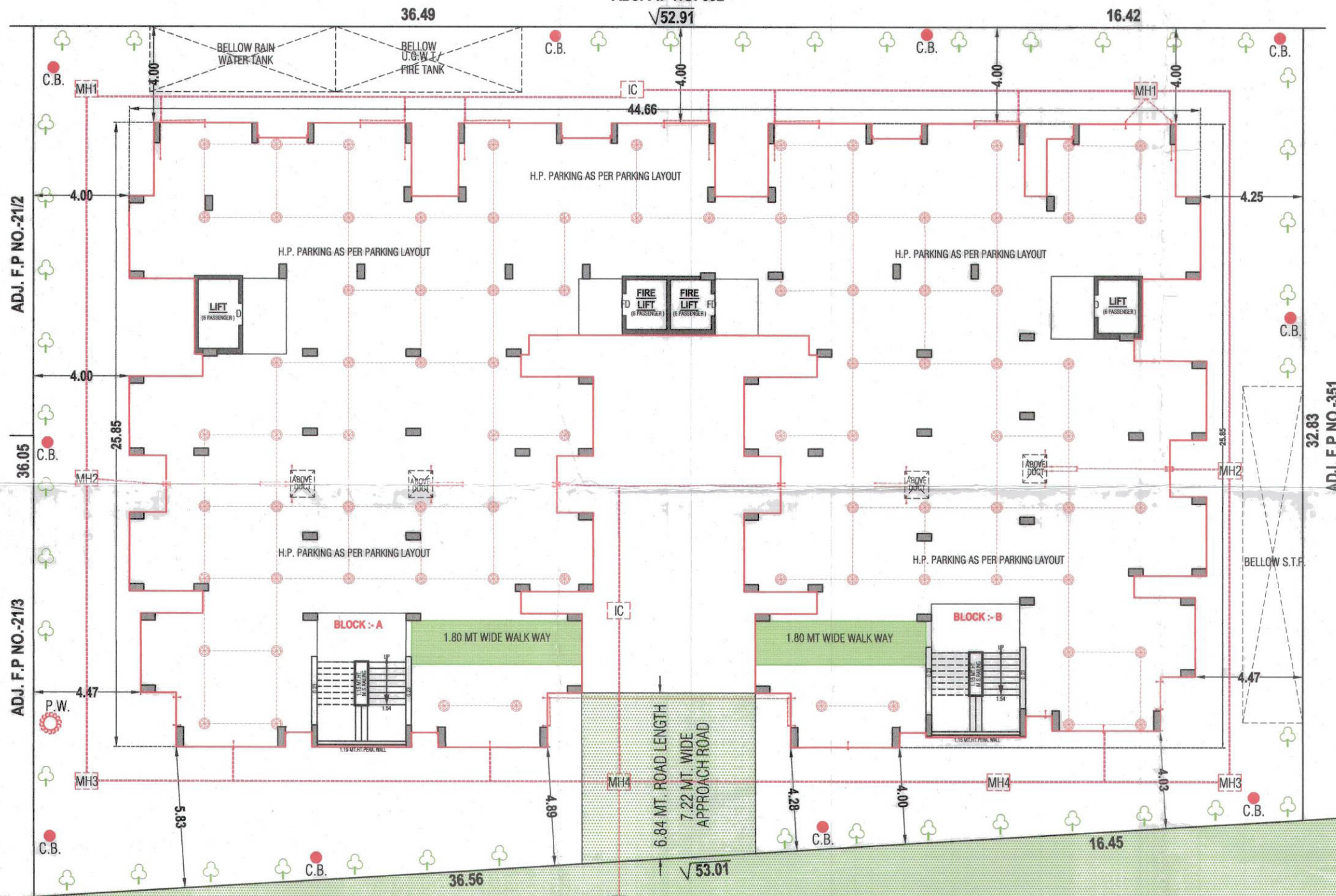


Structure  
**KANHAI ENGINEERS**



RERA:







36.49

$\sqrt{52.91}$

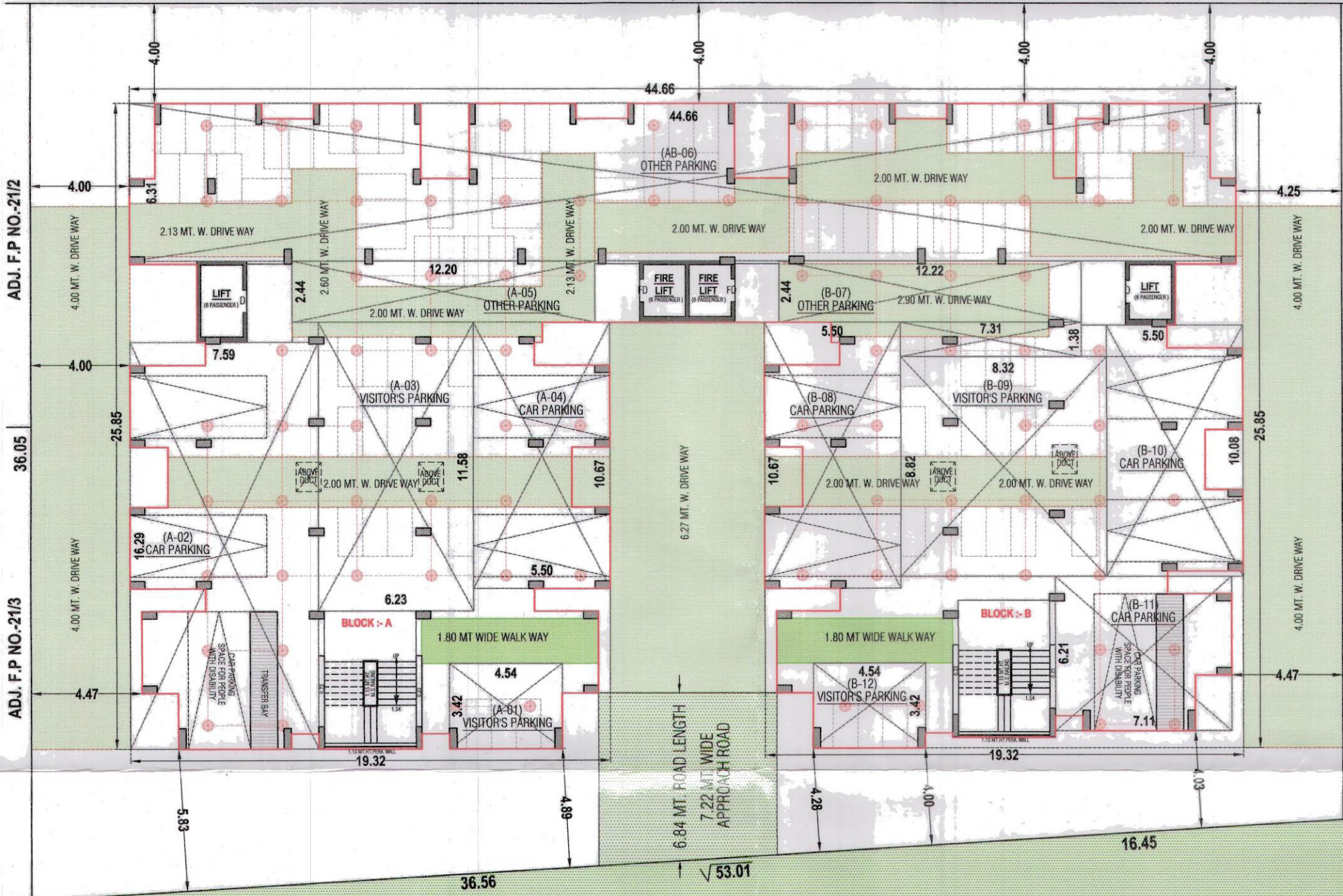
16.42

ADJ. F.P NO.-21/2

ADJ. F.P NO.-21/3

32.83

ADJ. F.P NO.-351



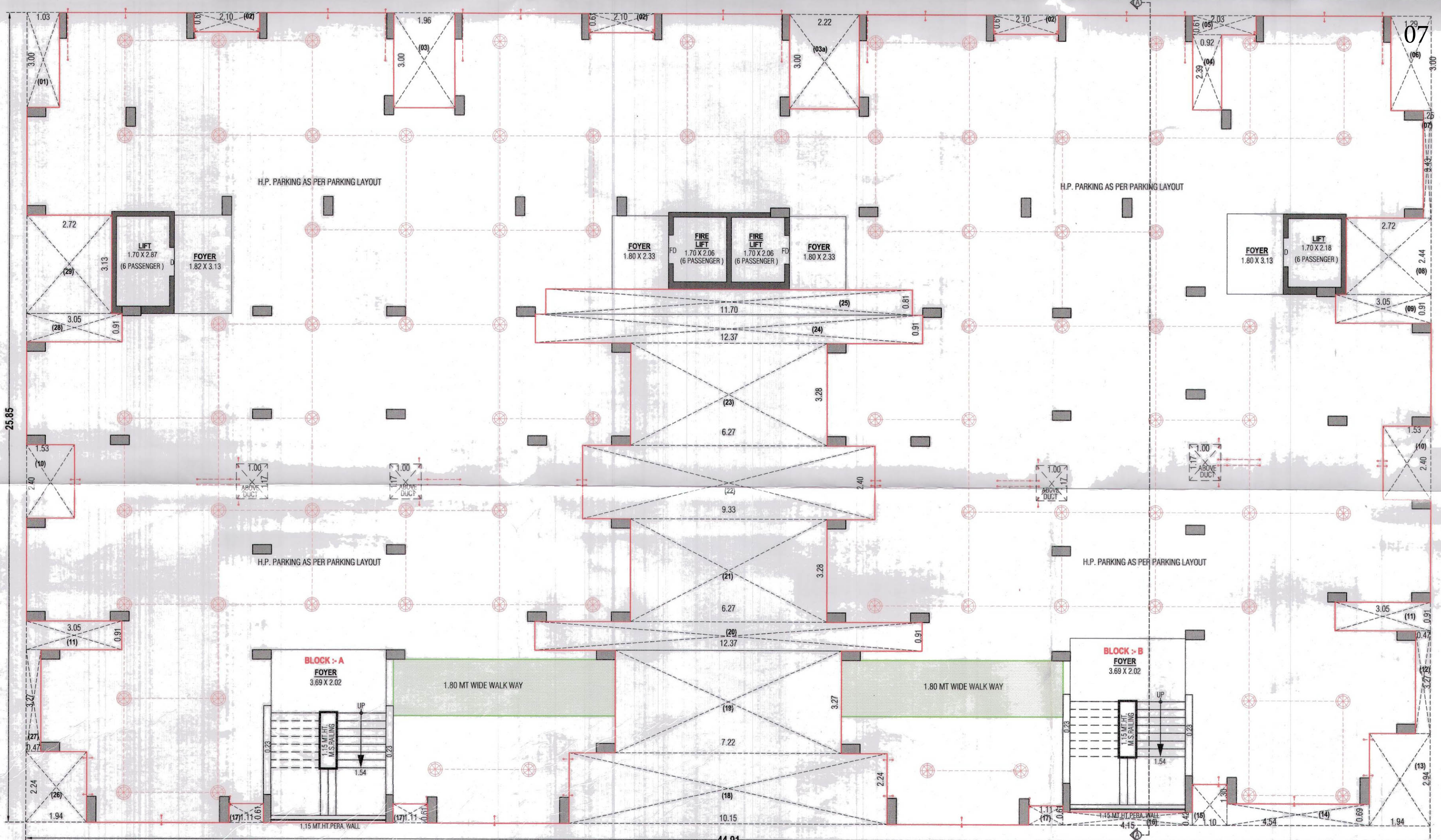
12.00 MT. WIDE T.P.S. ROAD

CANAL

12.00 MT. WIDE T.P.S. ROAD



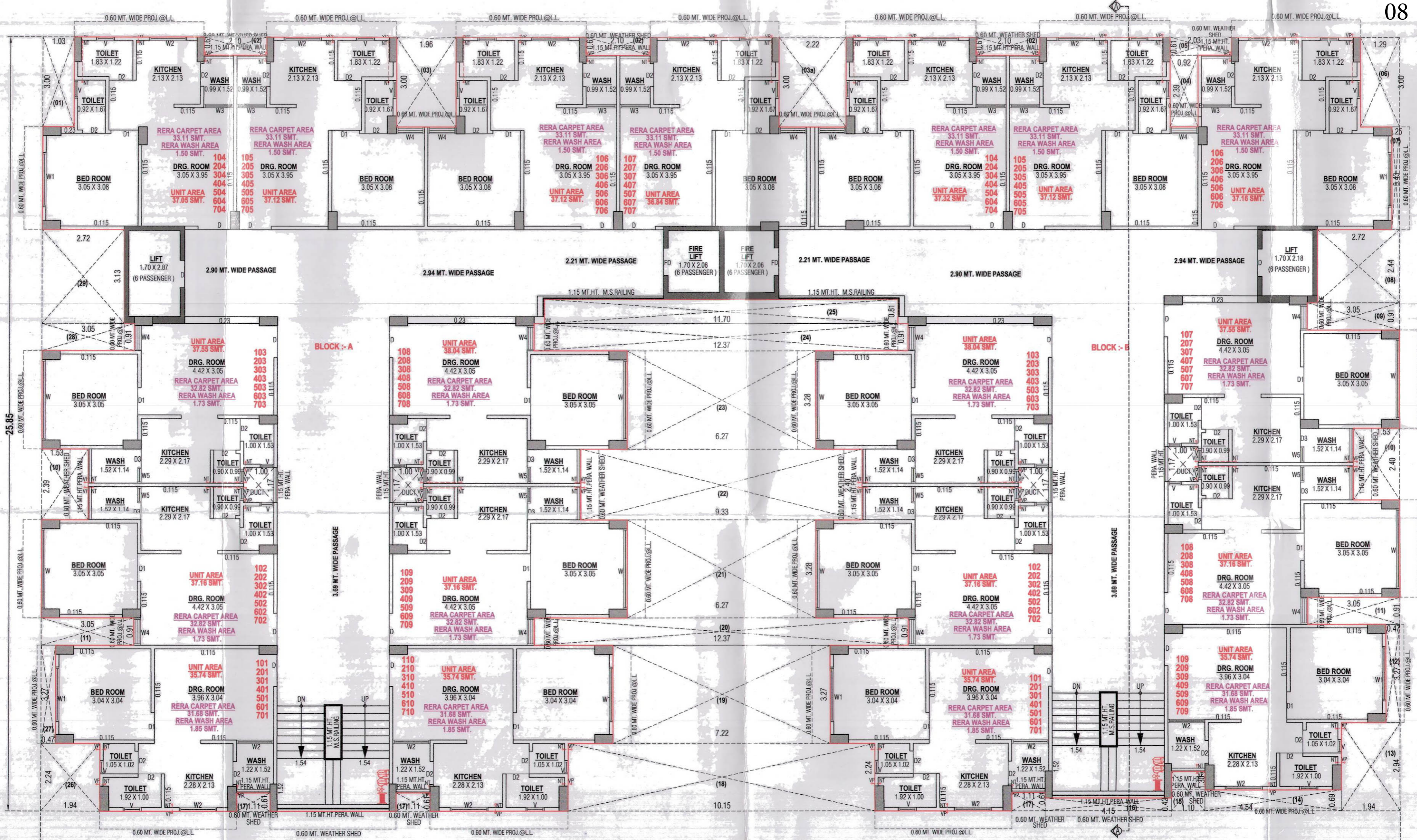




GR. FLOOR PLAN (H.P.)

44.91





1st. to 7th. FLOOR PLAN