

RERA NO. : \_\_\_\_\_  
WEBSITE : [www.gujrera.gujarat.gov.in](http://www.gujrera.gujarat.gov.in)

# રિપ્લા RESIDENCY

Site Address :

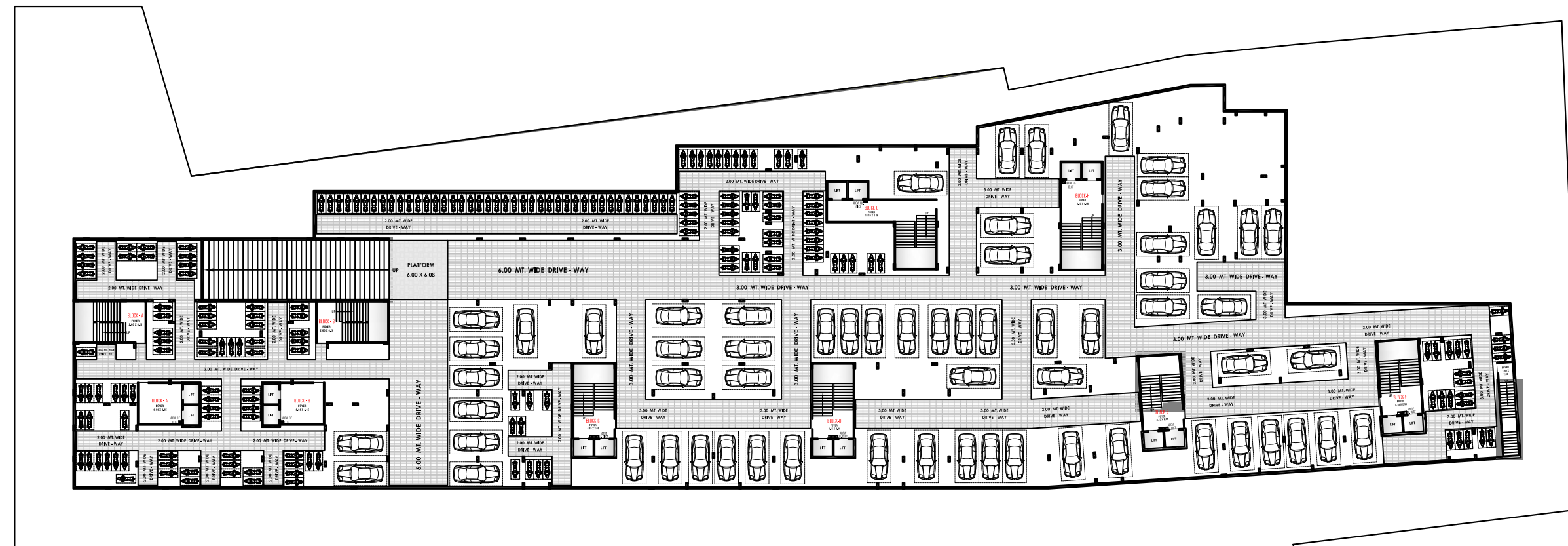
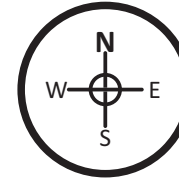
Nr. Primary School, Opp. Ramol Bus Stop Dargah, Ramol Village,  
New Maninagar, Ahmedabad - 382449

Contact No. : +91 99099 08968



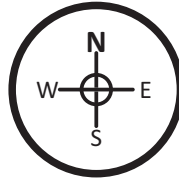


# BASEMENT FLOOR LAYOUT PLAN



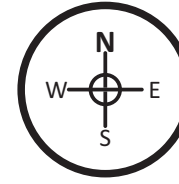
12.00 MT. WIDE ROAD

# GROUND FLOOR SHOP LAYOUT PLAN

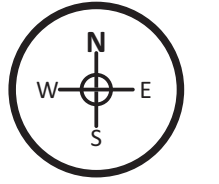


12.00 MT. WIDE ROAD

# 1ST FLOOR LAYOUT PLAN



# TYPICAL FLOOR PLAN (2ND TO 9TH)

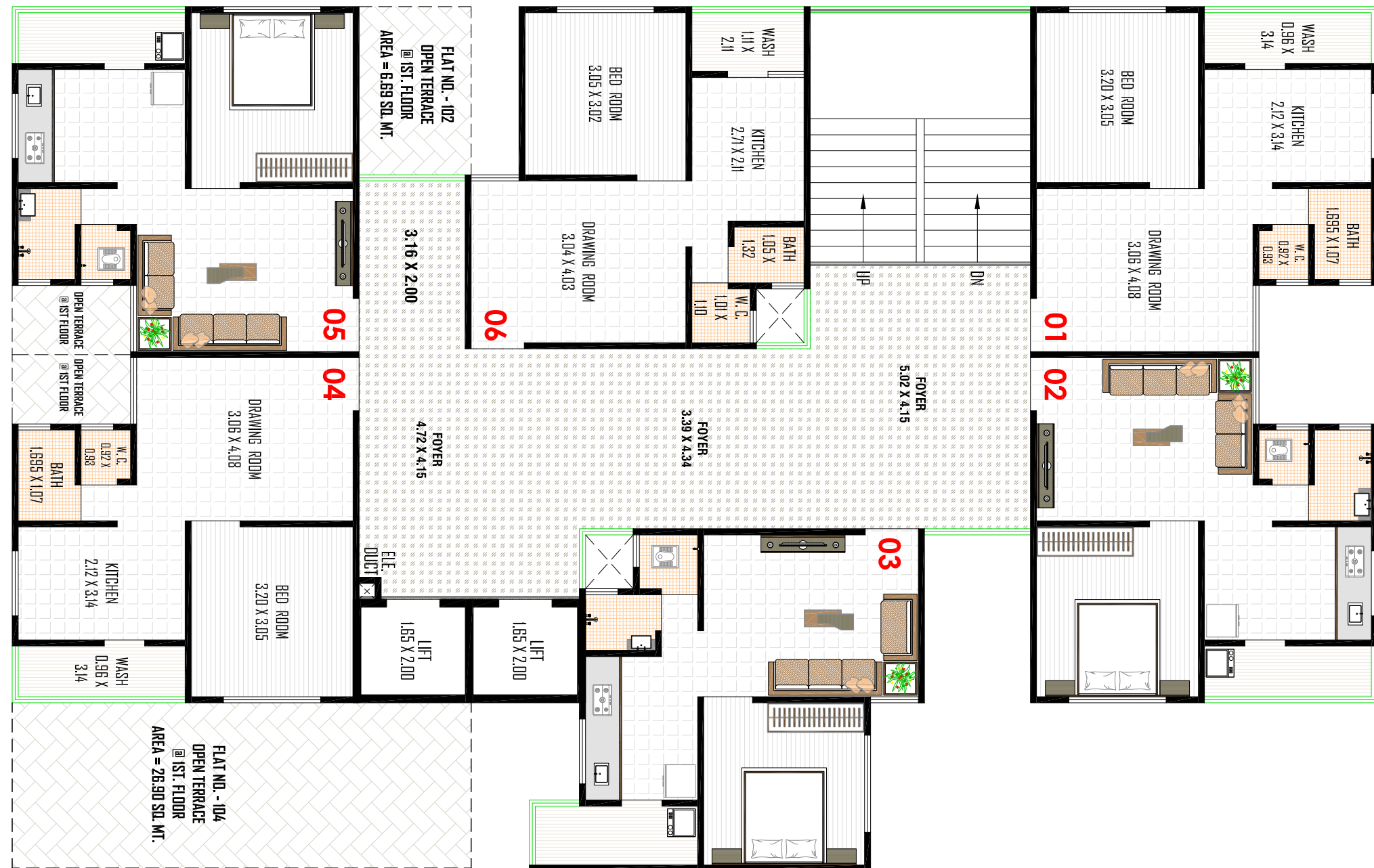
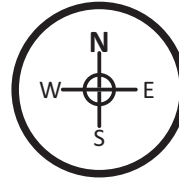


12.00 MT. WIDE ROAD

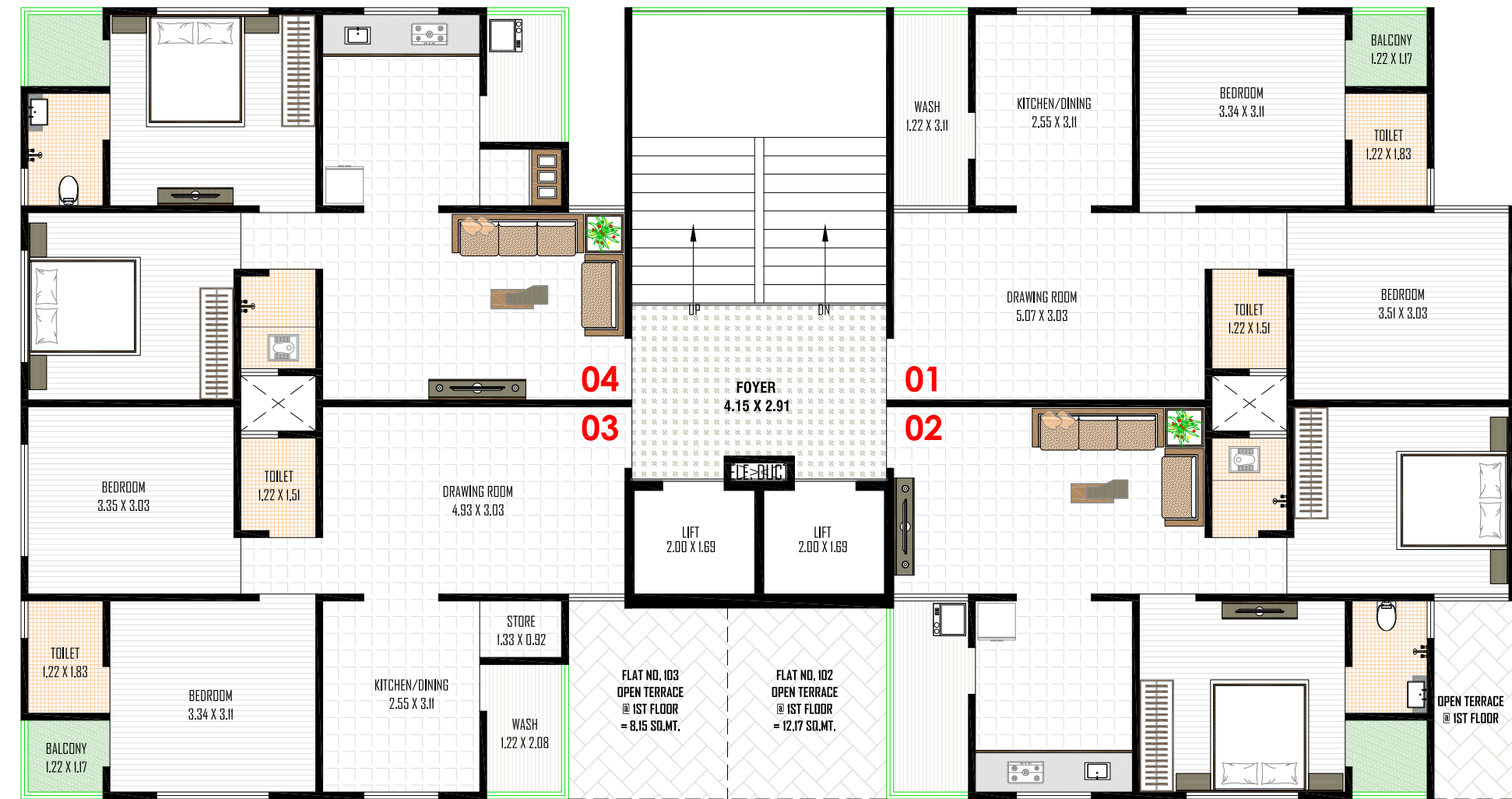
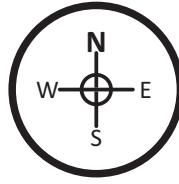


12.00 MT. WIDE ROAD

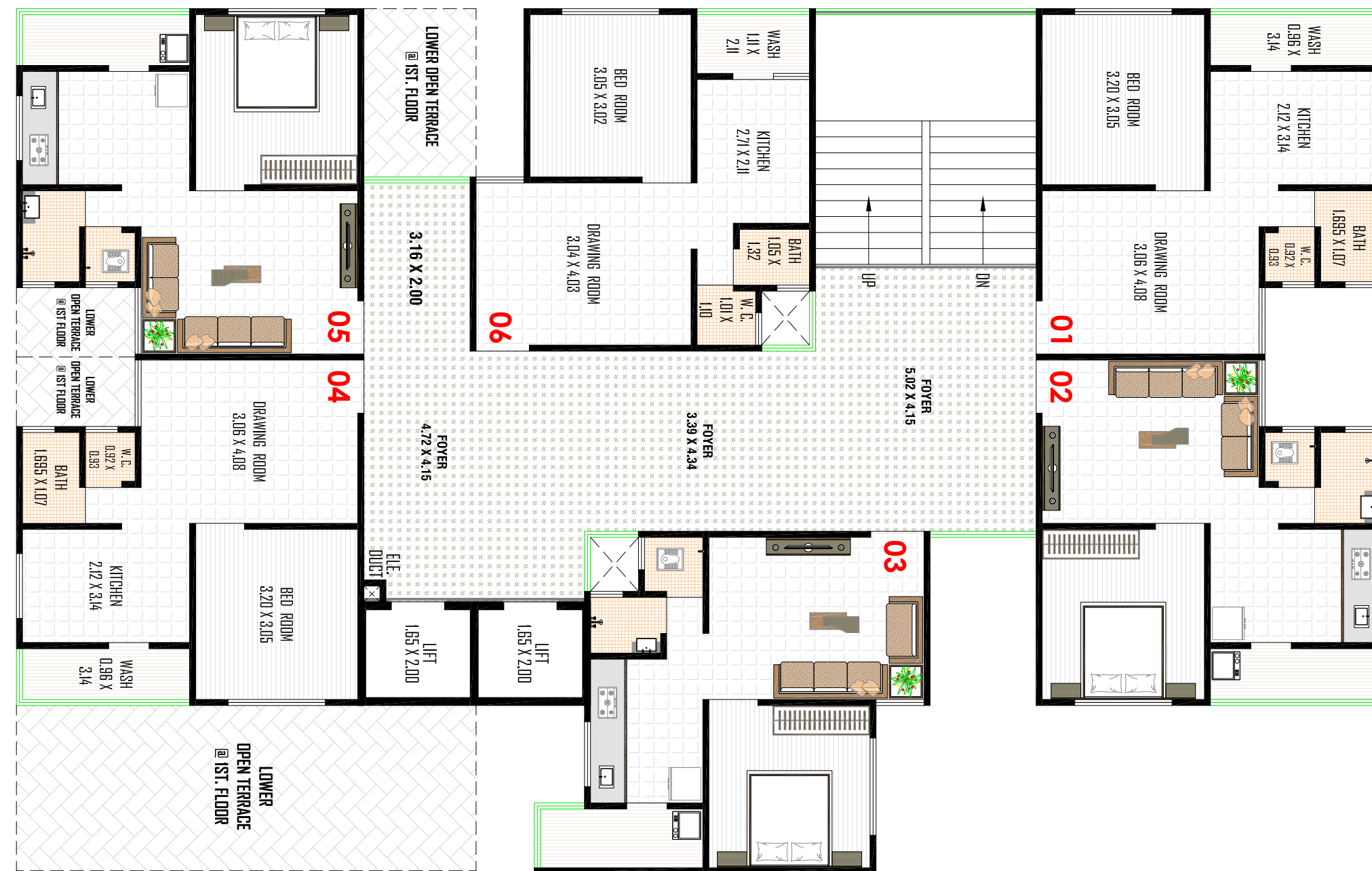
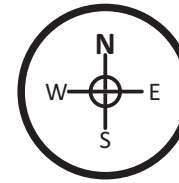
# 1ST FLOOR PLAN (BLOCK :- A,B)



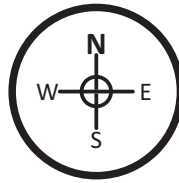
# 1ST FLOOR PLAN (BLOCK :- C,D,E,F)



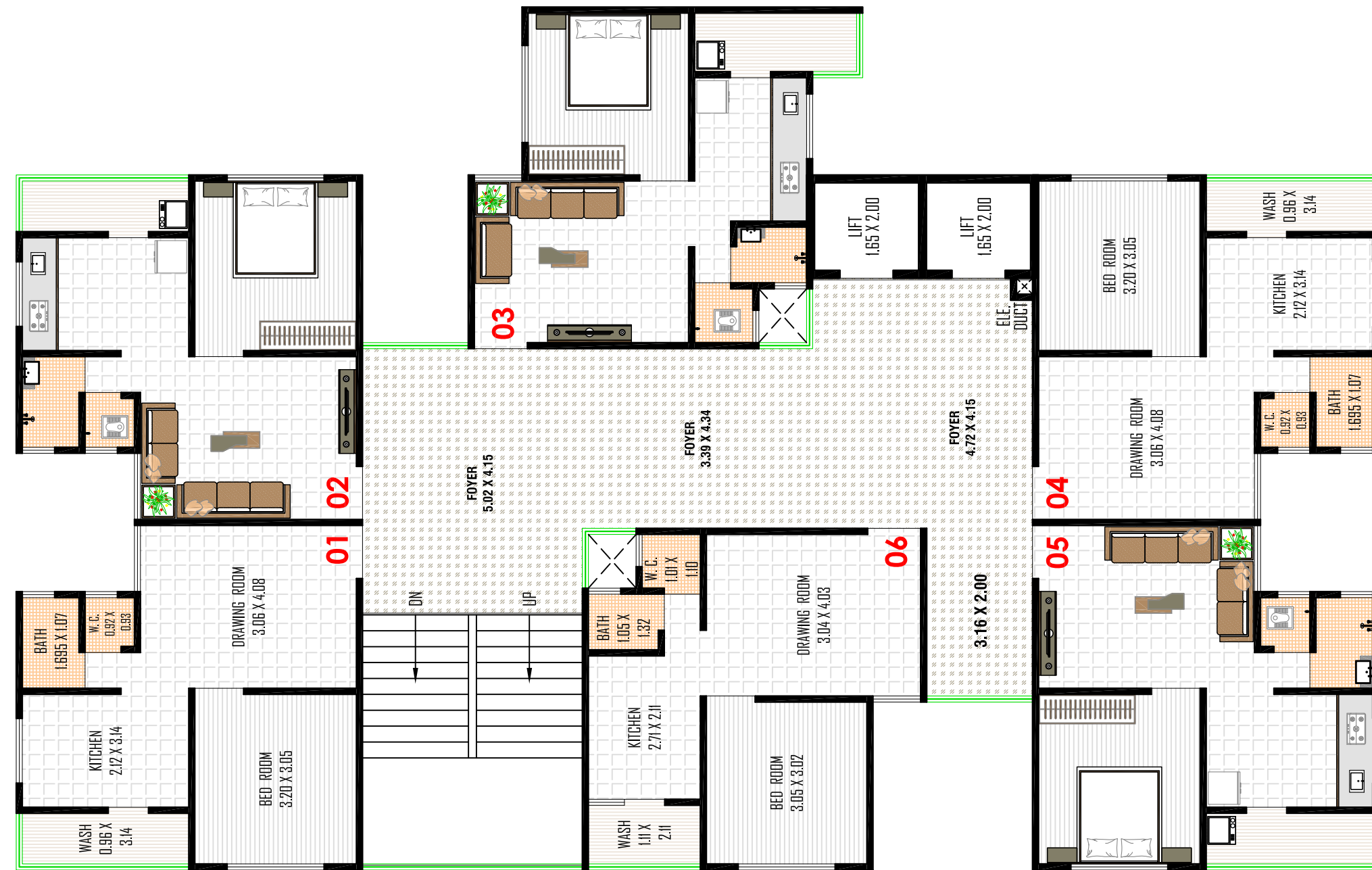
## TYPICAL FLOOR PLAN (2ND TO 9TH) (BLOCK :- A,B)



## TYPICAL FLOOR PLAN (2ND TO 9TH) (BLOCK :- C,D,E,F)



**2ND TO 9TH FLOOR PLAN  
(BLOCK :- A,B)**



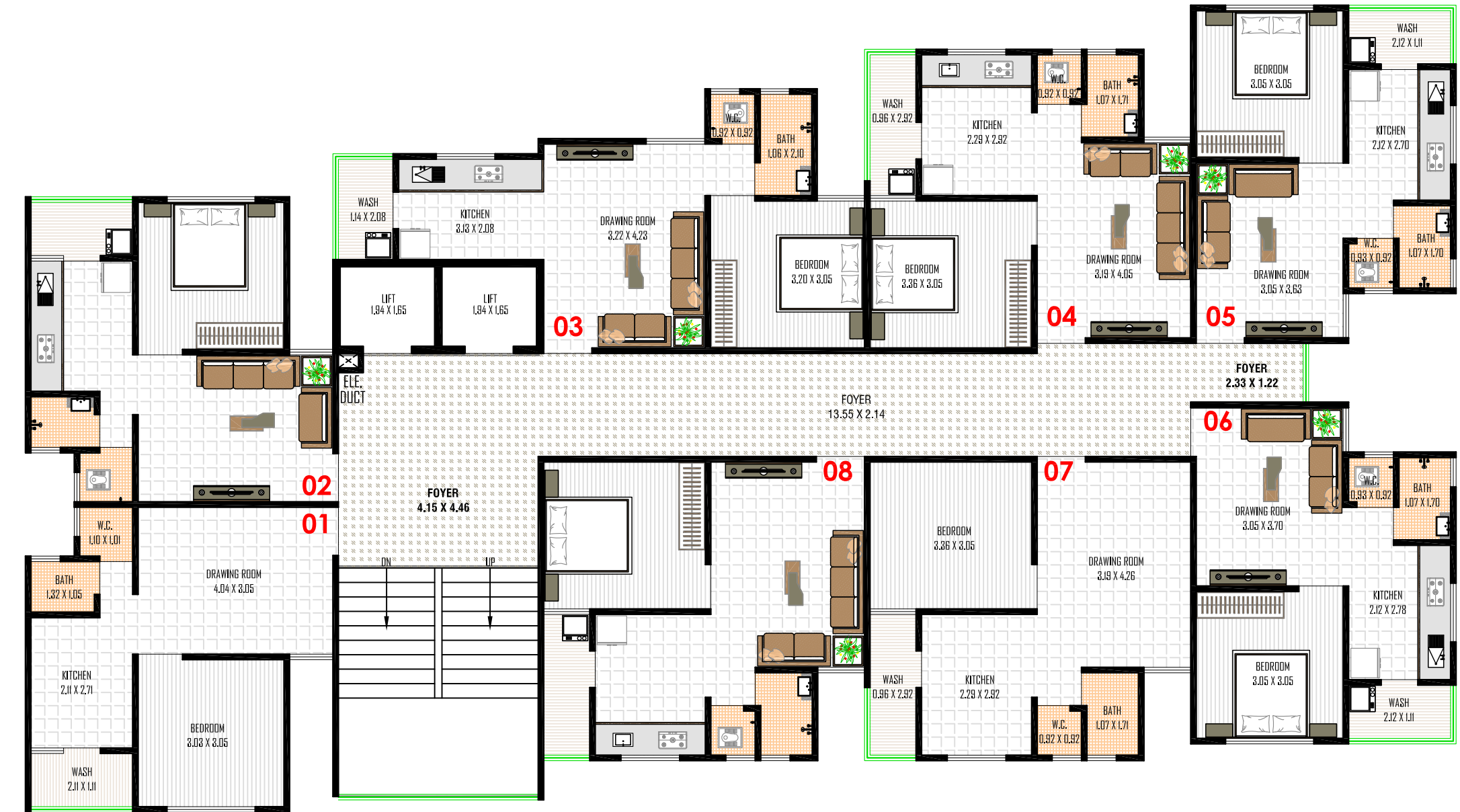
**2ND TO 9TH FLOOR PLAN  
(BLOCK :- C,D,E,F)**



**2ND TO 10TH FLOOR PLAN  
(BLOCK :- G)**



**2ND TO 10TH FLOOR PLAN  
(BLOCK :- H)**





## BUNGLOW PLANING



## SPECIFICATION



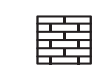
### FLOORING

Vitrified tiles for entire flooring in all apartments.



### STRUCTURE

Earth quake resistant R.C.C. frame structure as per new laws.



### WALL FINISH / ELEVATION

Internal mala plaster with finish putty, attractive external elevation with double coat sand faced plaster texture.



### KITCHEN

Mirror polished granite platform with S.S. sink, Designer glaze tiles up to lintel level.



### DOORS

Decorative main door & other flush doors.



### WINDOWS

All windows in alluminium section with granite frame, standard quality window glass.



### TOILET

Tiles on floor and walls up to lintel level. Sanitary & bath fittings.



### ELECTRIFICATION

ISI modular switches with concealed wiring and the adequate number of points



### PLUMBING

ISI CPVC/UPVC pipes for water supply, PVC & SWR pipes for solid waster and drainage systems. percolation recharge wells as per the norms branded CP Fittings.



### TERRACE

Brick-bat concrete with china mosaic for heat reflection with water proofing.



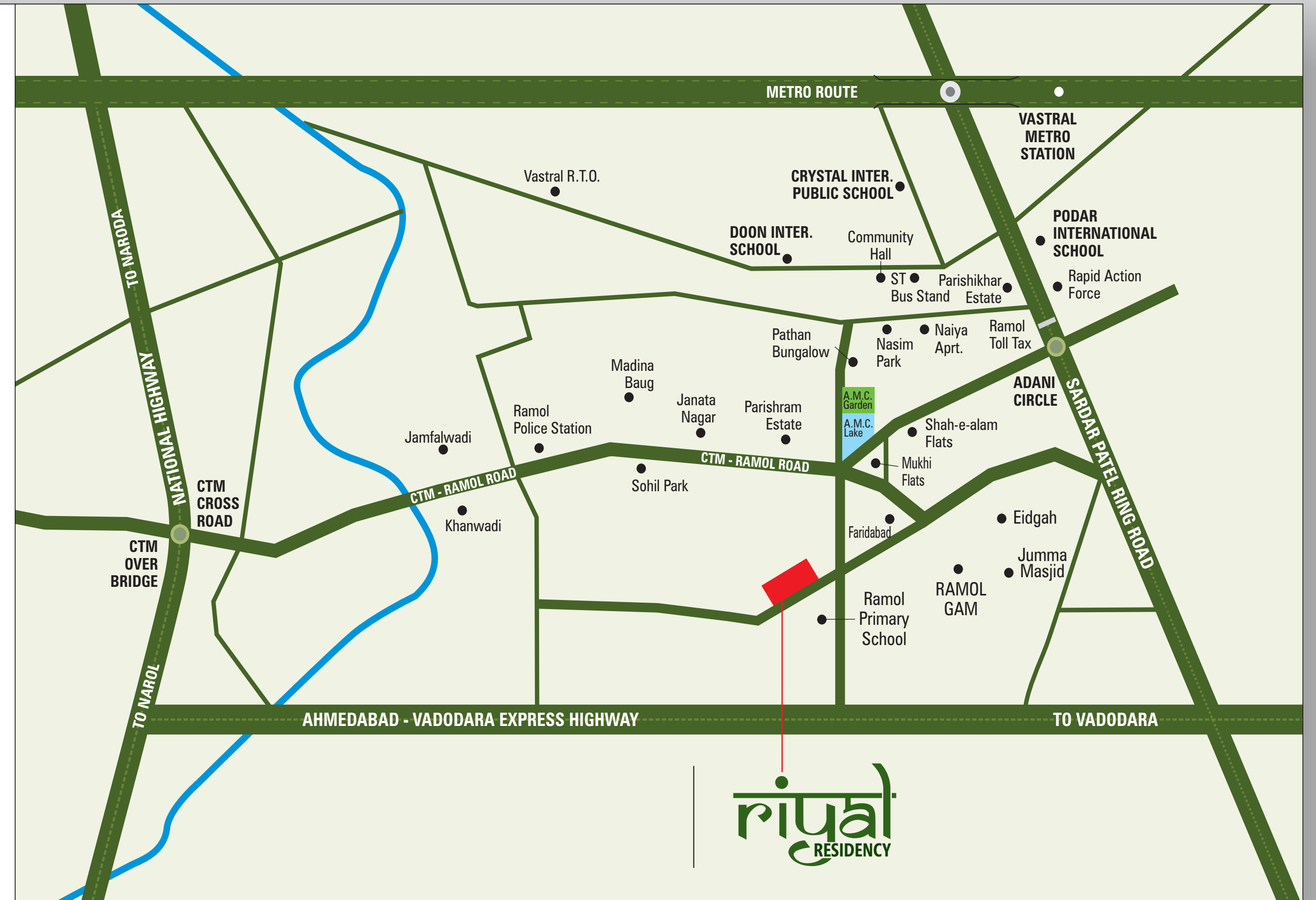
DEVELOPERS :

SITE ADDRESS :  
Nr. Primary School, Opp. Ramol Bus Stop Dargah, Ramol Village,  
New Maninagar, Ahmedabad - 382449  
Contact No. : +91 99099 08968



ARCHITECT :

SCAN FOR LOCATION



**riyat**  
RESIDENCY