

**SOLITAIRE  
SUPERB**

SOLITAIRE  
SUPERB

A PROJECT BY



**SOLITAIRE  
GROUP**

Site Address :

B/h. Ganesh Vihar Flats, Opp. Somnath Party Plot,  
Sardar Patel Road, New Nikol, Ahmedabad-382 350.

Contact :

**+91 90690 70870, 90690 70970**

RERA REG. NO. : PR/GJ/AHMEDABAD/AHMEDABAD CITY/AUDA/RAA07976/010221

Website: [www.gujrera.gujarat.gov.in](http://www.gujrera.gujarat.gov.in)



Architect :



Structural :



SHREEJI  
STRUCTURALS  
Ahmedabad

2 BHK LIVING SPACE FLATS

Architecture that  
aims at **SOLITAIRE SUPERB !**

**SOLITAIRE SUPERB** is a lifestyle. It is a way of looking at the world.

It is a constant exploration where we look for and  
find inspiration in the world around and then apply that inspiration  
to create something completely new that lasts forever.



**SOLITAIRE  
SUPERB**

Solitaire Group is being built with a vision to provide holistic living &  
ensure that all your dreams come true at an affordable price.

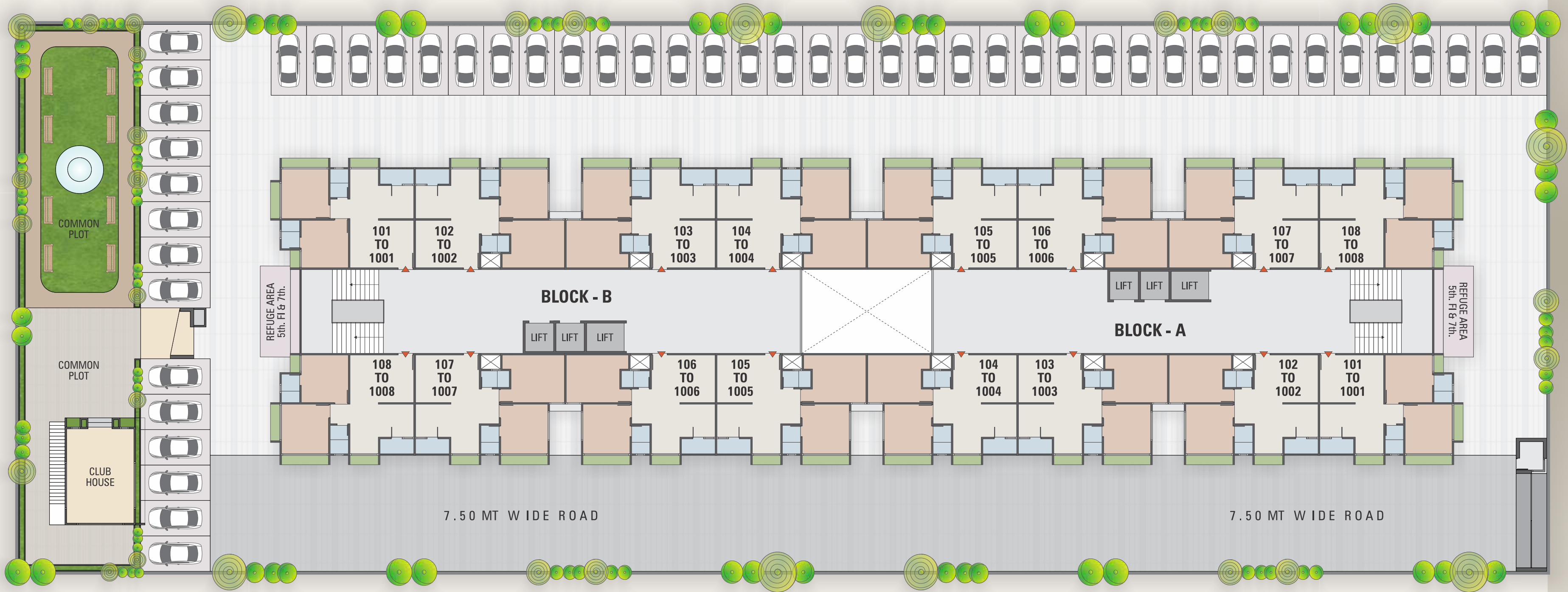
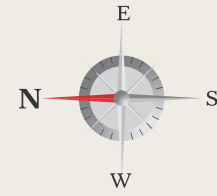


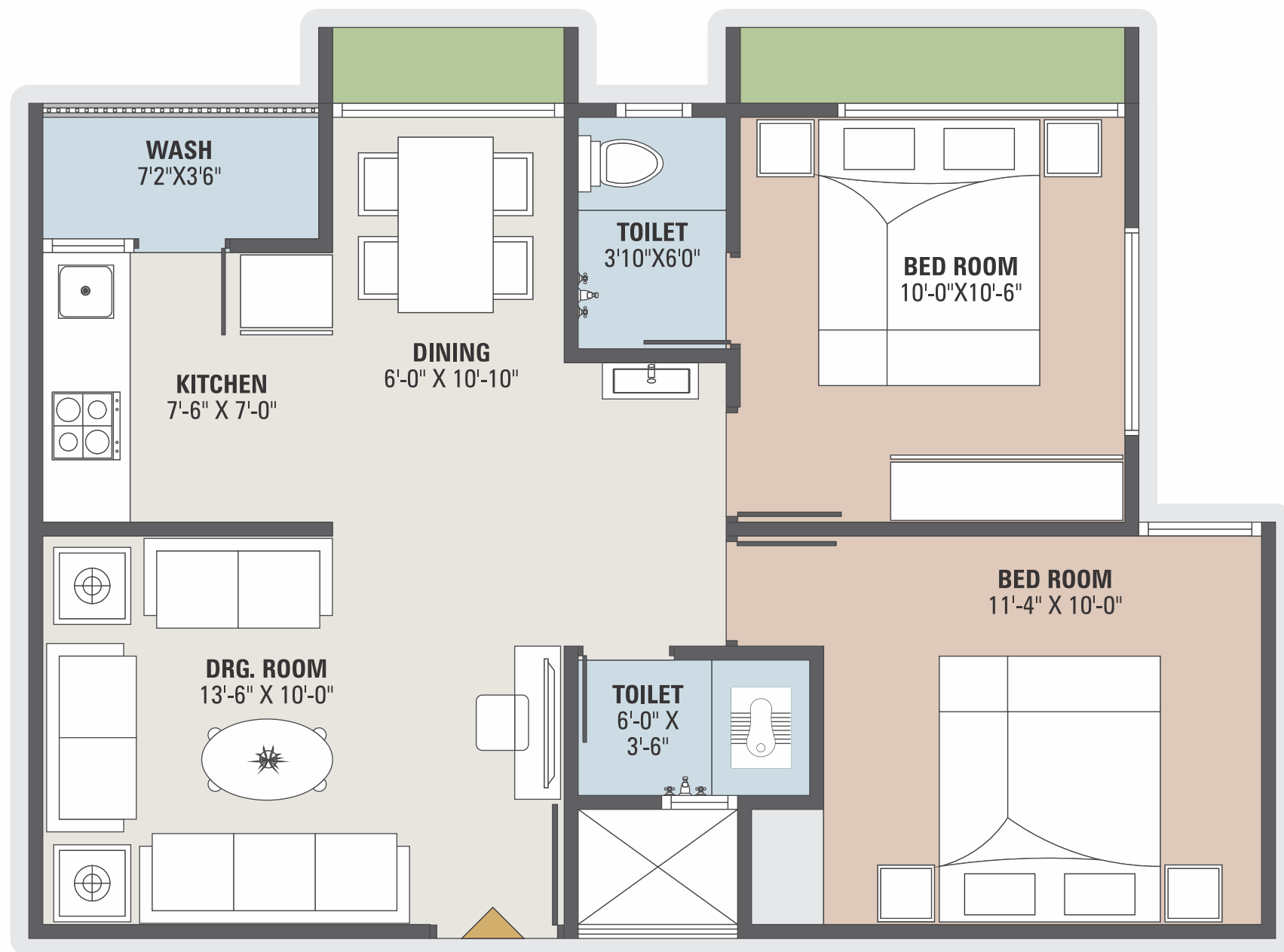
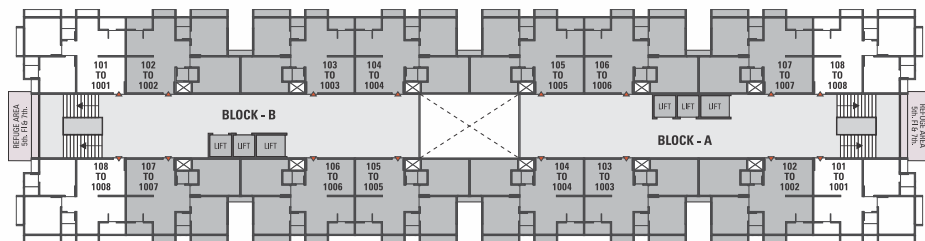
**2 BHK LIVING SPACE FLATS**



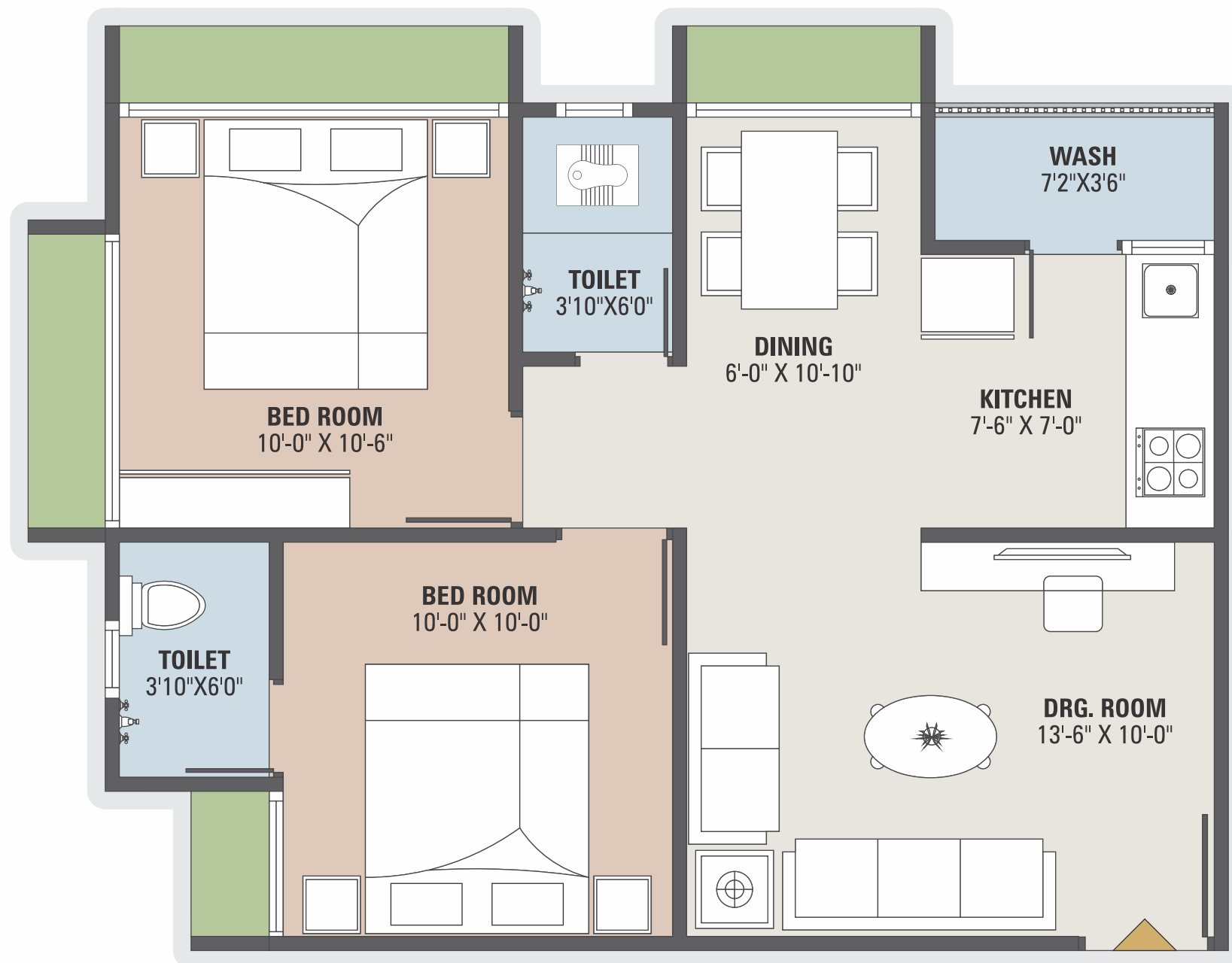
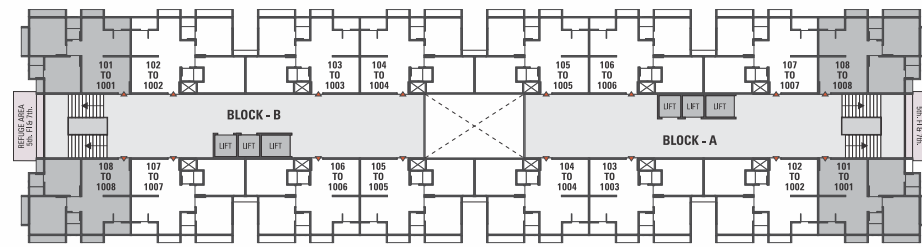


# TYPICAL LAYOUT PLAN

















A UNIQUE COMBINATION OF LUXURIOUS FACILITIES

-  Entrance Gate
-  CCTV Camera
-  Security Cabin
-  Senior Citizen Sitting Area
-  School Bus Pick-up Zone
-  Jogging Track
-  Society Office
-  Kids Play Area
-  Lush Green Garden
-  24 Hours Water Supply
-  Fire Safety System
-  Patient / Luggage Specious Lift
-  Car Parking Space
-  Solar System Common Lighting



## SPECIFICATION

-  **STRUCTURE**  
Earthquake resistant R.C.C. frame structure as per new by laws.
-  **FLOORING**  
Vitrified tiles for entire flooring in all apartments.
-  **WALL FINISH / ELEVATION**  
Internal mala plaster with white finish putty.  
Attractive external elevation with double coat sand faced plaster.
-  **DOORS & WINDOWS**  
Decorative main door & other flush doors with Wooden frame.  
All windows in sliding with plane glass with granite frame.
-  **KITCHEN**  
Mirror polished granite platform with S.S. sink,  
designer glazed tiles up to lintel level.
-  **ELECTRIFICATION**  
Branded ISI modular switches with concealed copper wiring and the adequate number of points. ISI electrical accessory with MCB distribution panel.
-  **PLUMBING**  
ISI CPVC and UPVC pipes for water supply, PVC & SWR pipes for solid waste and drainage systems. Percolation recharge wells as per the norms. Branded CP fittings.
-  **TOILET**  
Designer tiles on floor and walls up to lintel level.  
Branded sanitary & bath fittings.
-  **TERRACE**  
Brick-bat concrete with china mosaic for heat reflection and thermal insulation.

NOTE : • This brochure is not a legal part of the document but only for easy understanding of customer  
 • Irregular payment cause for cancellation of the booking • All rights are reserved by developers to make any changes in plan, scheme elevation, dimension and other details there in to comply with statutory regulation shall be binding to all the members • Subject to Ahmedabad Jurisdiction • Payments in favour of "SUPERB BUILDCON"