

RERA NO. : _____
WEBSITE : www.gujrera.gujarat.gov.in



The logo for 'RADHE SWAPNIL' features the word 'RADHE' in a large, black, serif font, with 'SWAPNIL' in a smaller, orange, sans-serif font below it. A decorative orange circular element with a leaf-like flourish at the top right encircles the text.

2 & 3 Bhk Luxurious Flats & Shops

Site Address :

Nr. 108 Call Center, Opp. Aditya International School,
Hanspura, Ahmedabad.

Developers :

BUILDCON

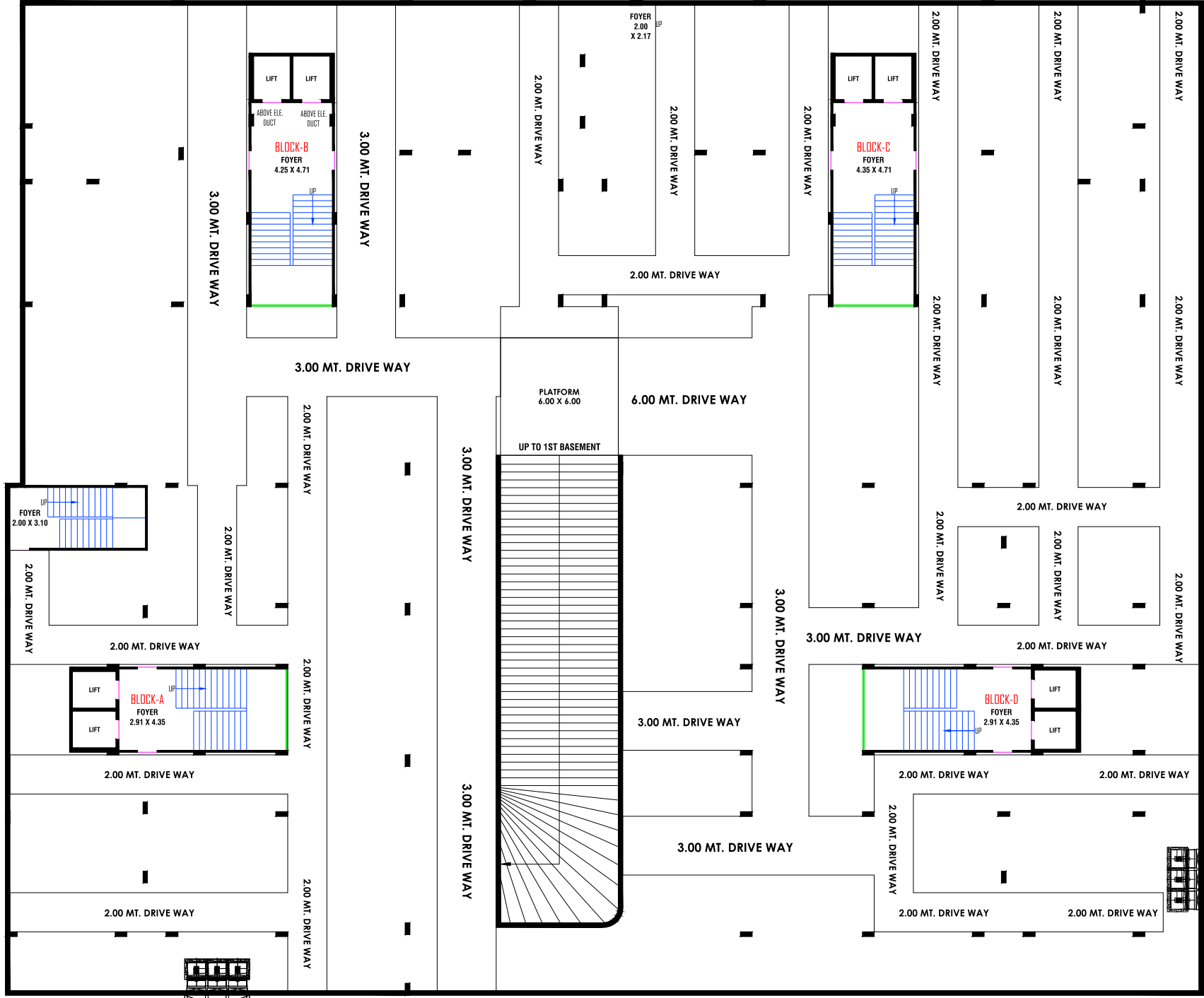
Architect :

Z-AXIS
ARCHITECTS



18.00 MT. WIDE T.P. ROAD

18.00 MT. WIDE T.P. ROAD



2ND BASEMENT PLAN



18.00 MT. WIDE T.P. ROAD

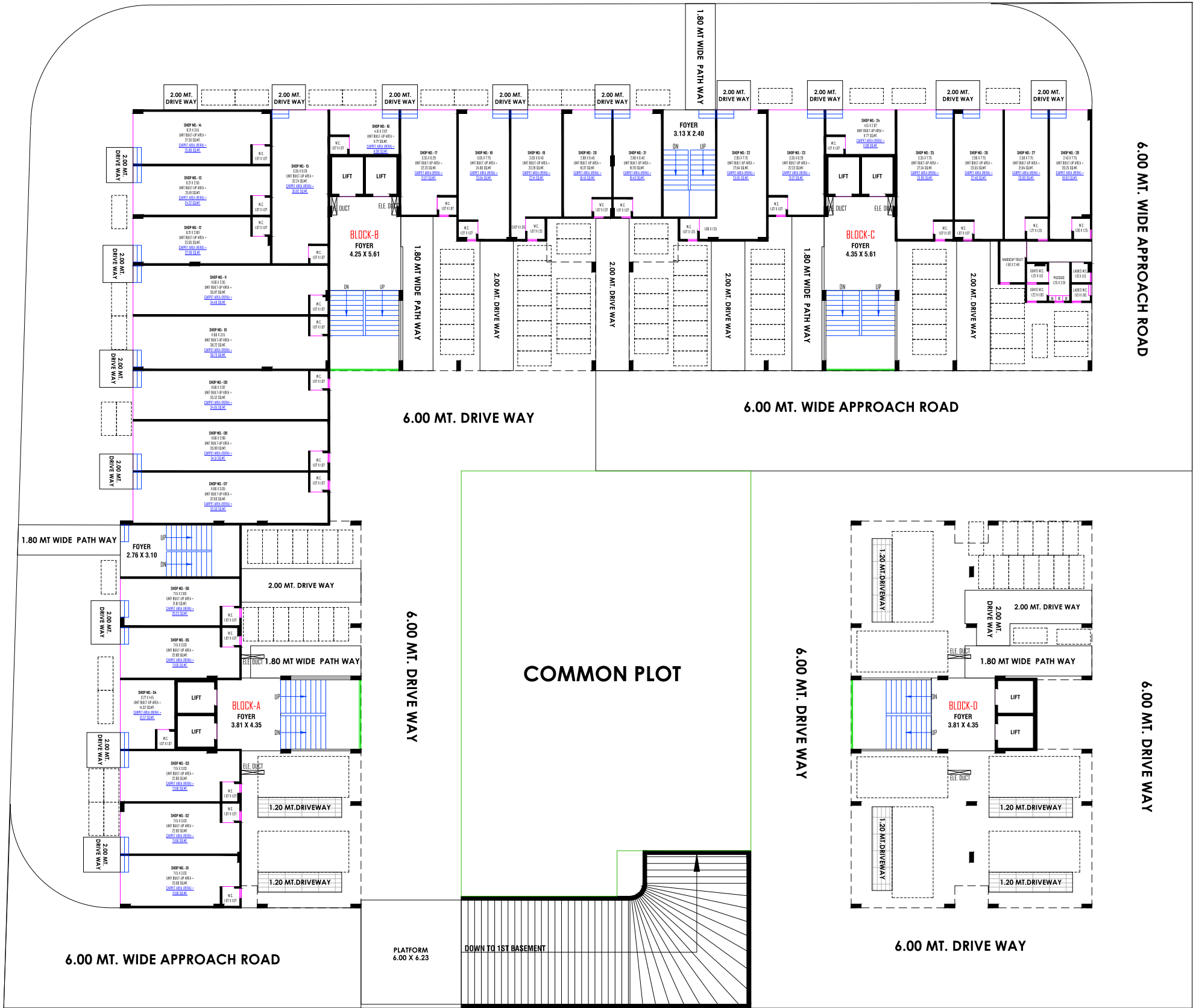
18.00 MT. WIDE T.P. ROAD



1ST BASEMENT PLAN

18.00 MT. WIDE T.P. ROAD

18.00 MT. WIDE T.P. ROAD



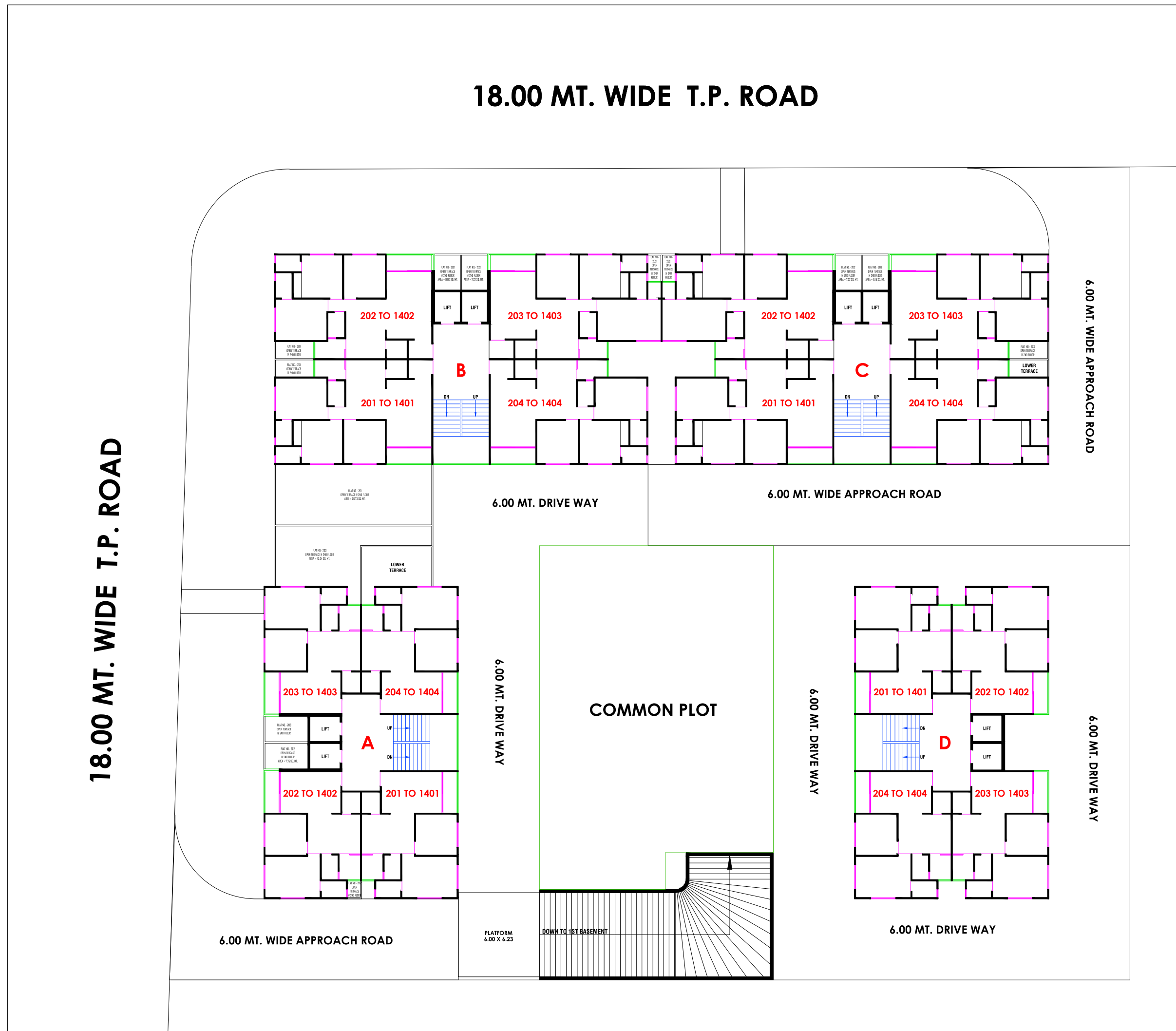
GROUND FLOOR LAYOUT PLAN

18.00 MT. WIDE T.P. ROAD

18.00 MT. WIDE T.P. ROAD



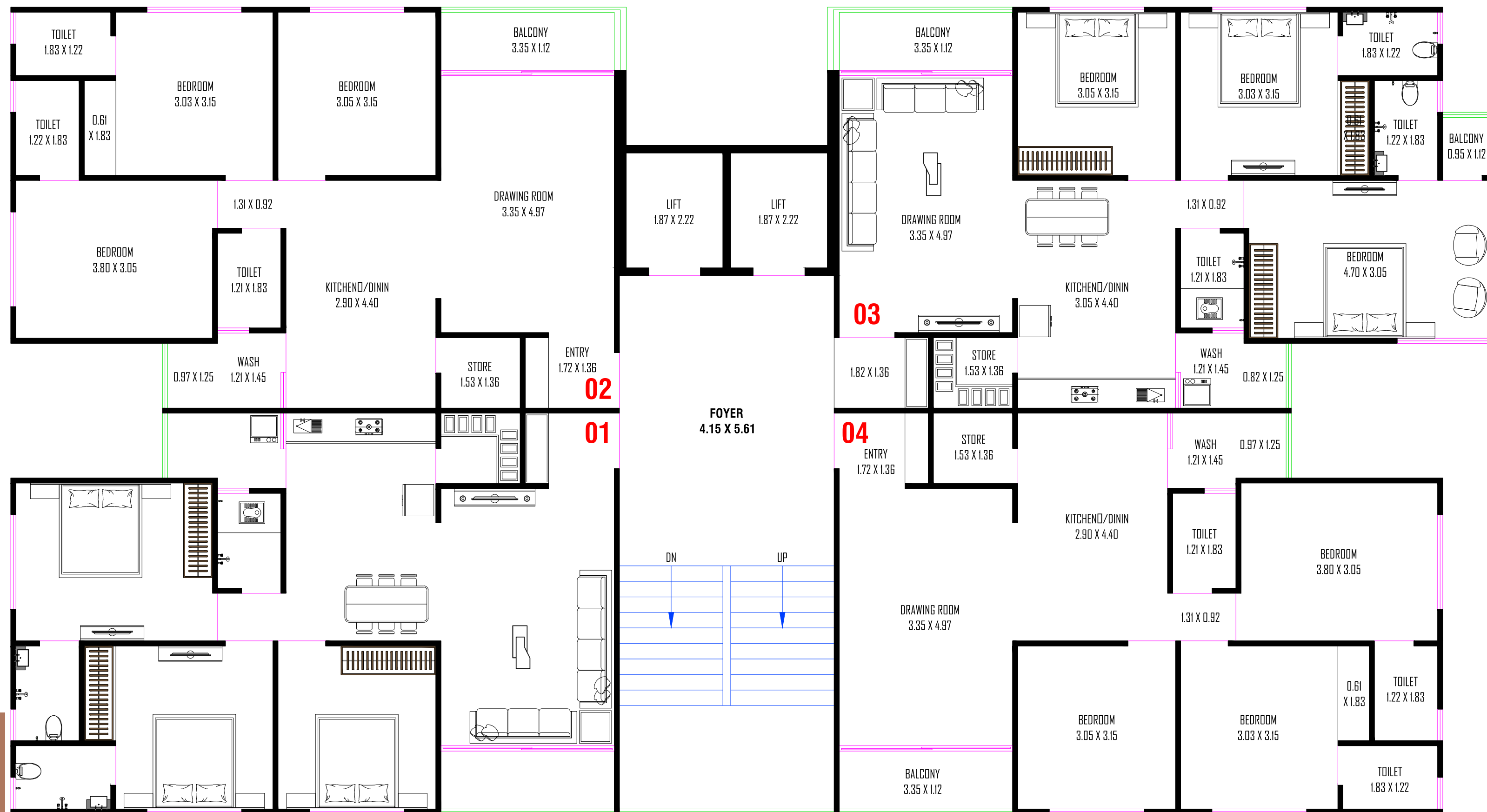
1ST FLOOR LAYOUT PLAN



TYPICAL FLOOR PLAN (2ND TO 14TH)



TYPICAL FLOOR PLAN (BLOCK :- A - 2ND TO 14TH)



TYPICAL FLOOR PLAN (BLOCK :- B,C - 2ND TO 14TH)



TYPICAL FLOOR PLAN (BLOCK :- D - 1ST TO 14TH)

SPECIFICATION

STRUCTURE

Earthquake resistant RCC frame structure.

FLOORING

Standard Vitrified tiles for entire flooring in all apartments.

DOORS & WINDOWS

Decorative Main Door And Other Flush Door & Anodized / Powder Coated Single Glazed Aluminium Windows

ELECTRIFICATION

Concealed ISI Copper Wiring With Modular Switch.

KITCHEN

Granite Platform with S.S. sink & ceramic / glazed tiles up to lintel level

WALL FINISH / ELEVATION

External - Double coat plaster with sand face finish Internal- Single coat mala plaster

PLUMBING

ISI CPVC or UPVC pipes for water supply, PVC & SWR pipes for solid waste and drainage systems.
Percolation recharge wells as per the norms. Standard CP fittings.

COLOUR

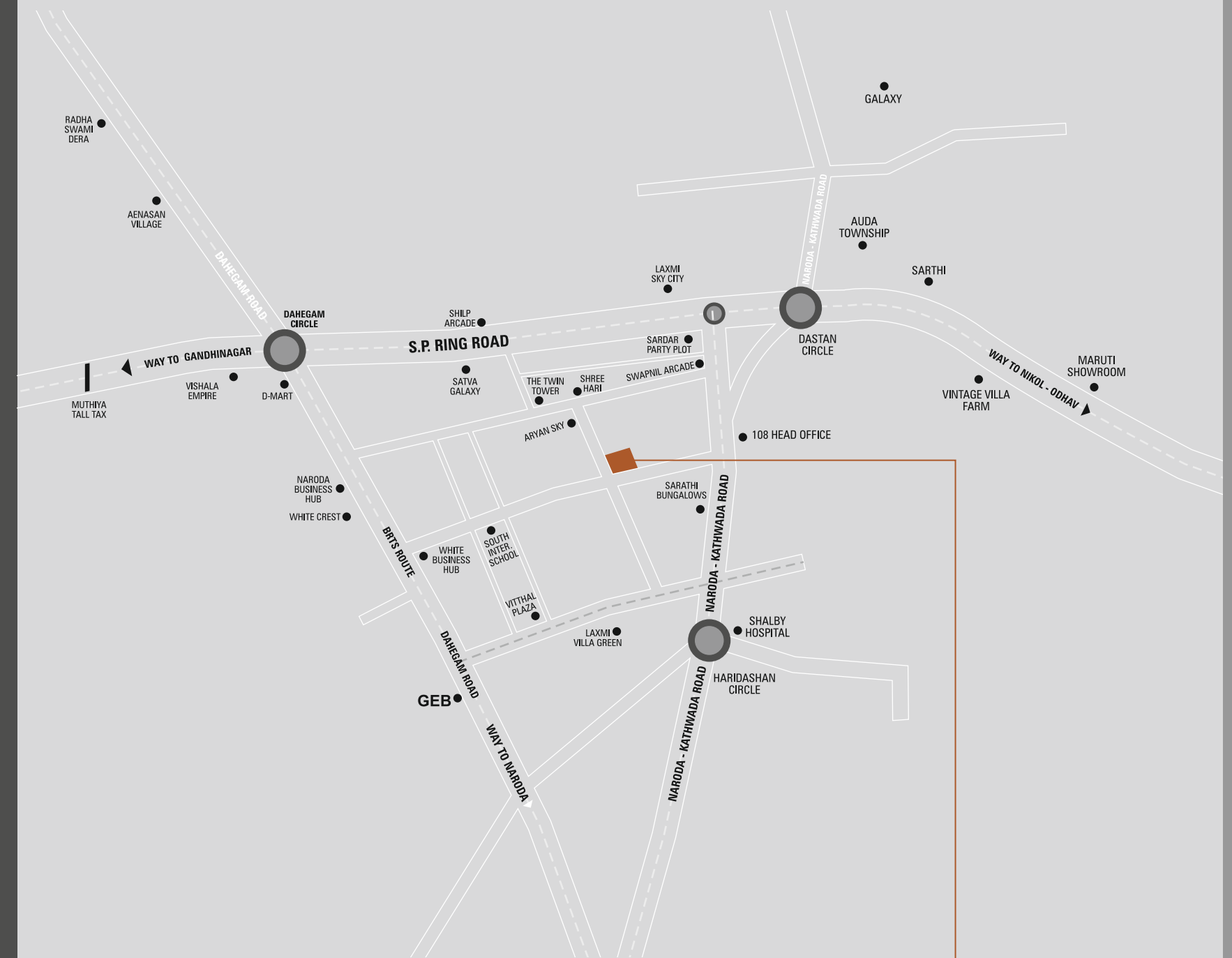
Acrylic Paint.

TOILET

Glazed / Ceramic tiles upto lintel level, Standard C.P. Brassfittings.

TERRACE

Brick-bat concrete with china mosaic for heat reflection and thermal insulation.



**RADHE
SWAPNIL**

2 & 3 Bhk Luxurious Flats & Shops

Site Address :

Nr. 108 Call Center, Opp. Aditya International School,
Hanspura, Ahmedabad.

Developers :



Architect :



Scan For Location

