

A PROJECT BY  
**SHIV DEVELOPER**

CONTACT  
**9426084123 , 9427605796**

## **PARTH AVENUE**

OPP. - SHREEJI BUNGLOW, NR. OM KARA BUNGLOW BH. D-MART,  
PANCHVATI BYE PASS ROAD , KALOL

ARCHITECT  
**MORPHALLAXIS**  
+91 8460406000

STRUCTURE ENGG.  
**PANKAJ M PATEL CONSULTANTS PVT.LTD.**  
079-27643175

RERA REG. NO.:

# Parth Avenue

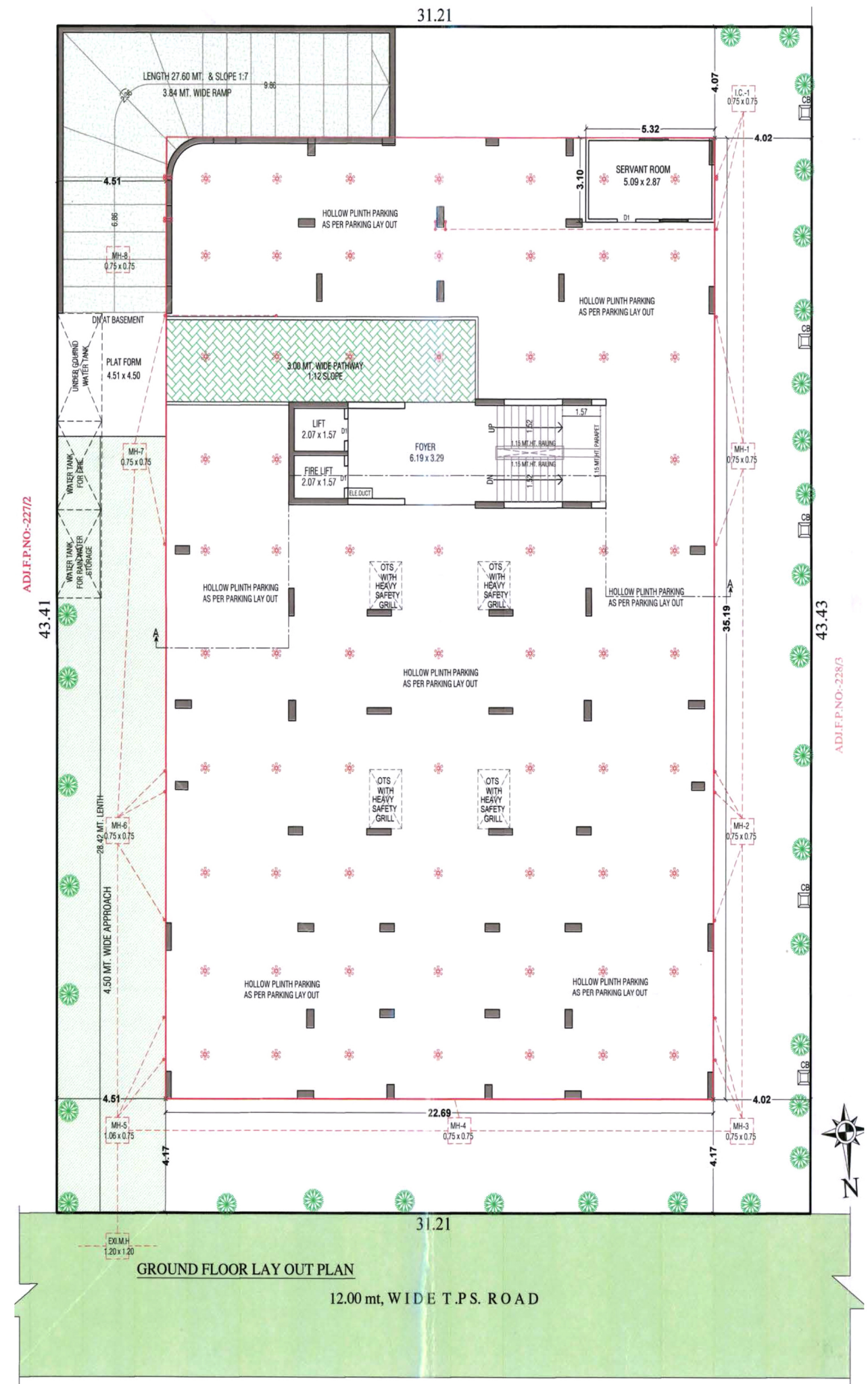




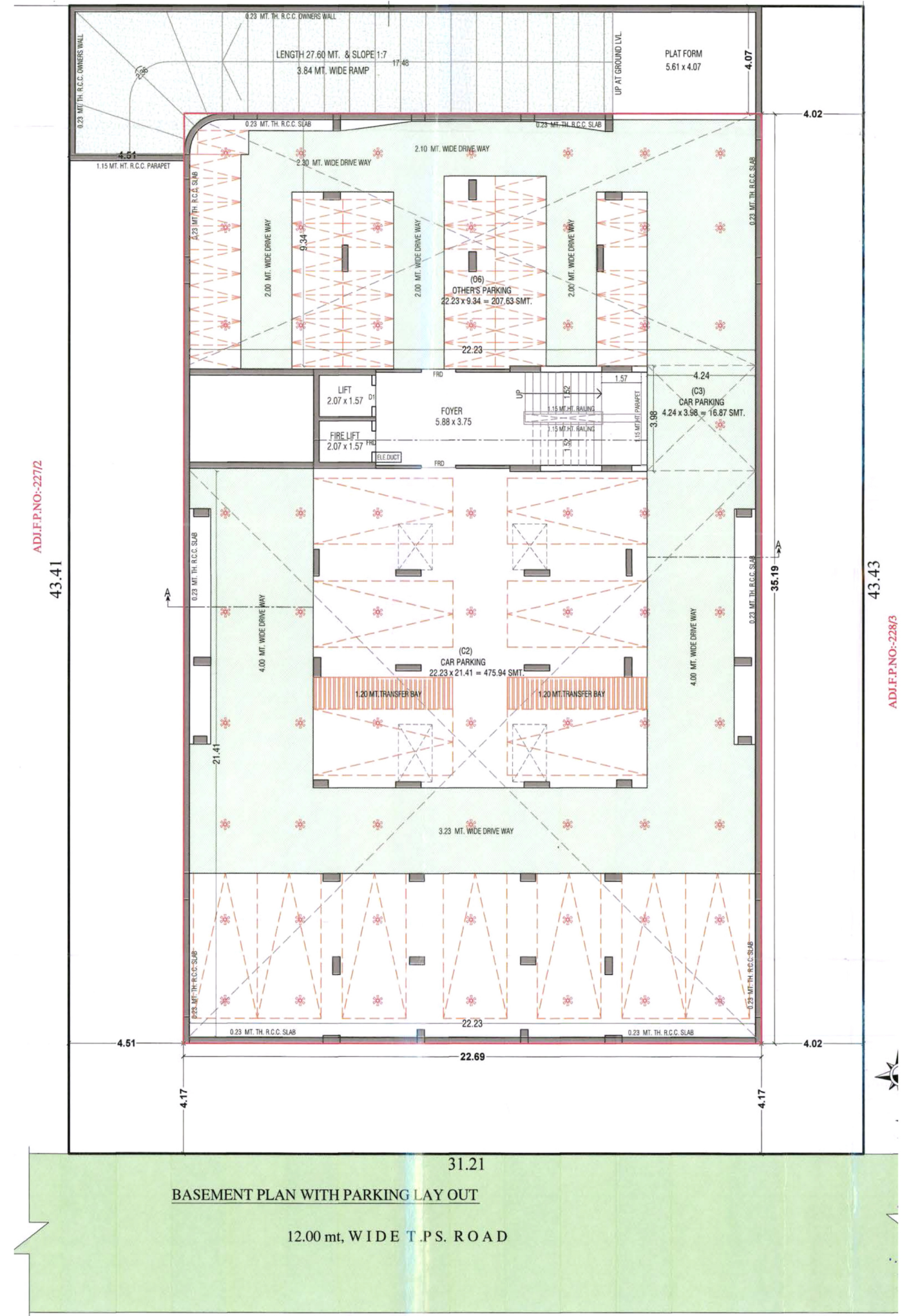
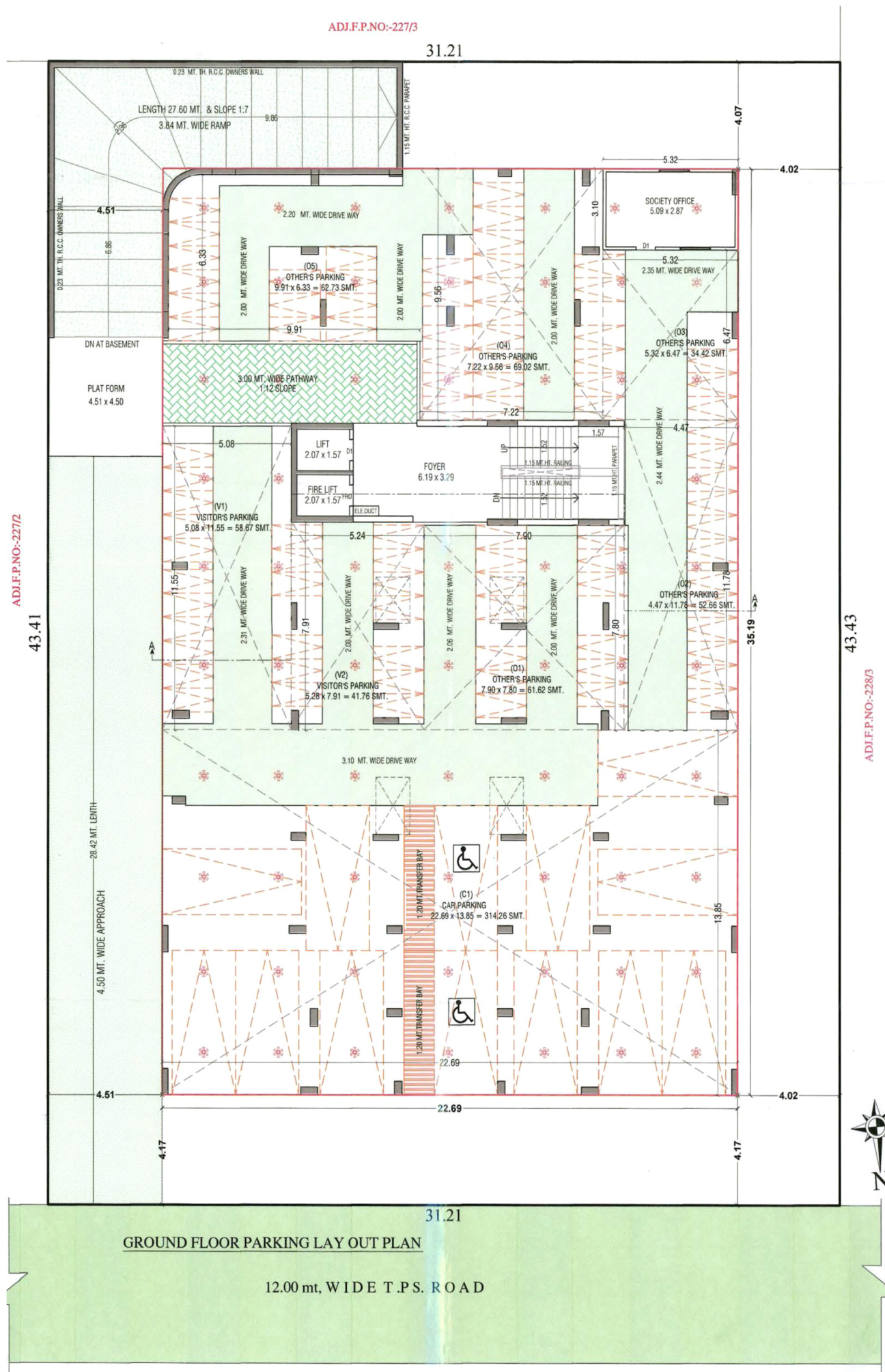
modern  
architecture

At Parth Avenue , beyond the first stunning impression lies & equally rich and gratifying living experience

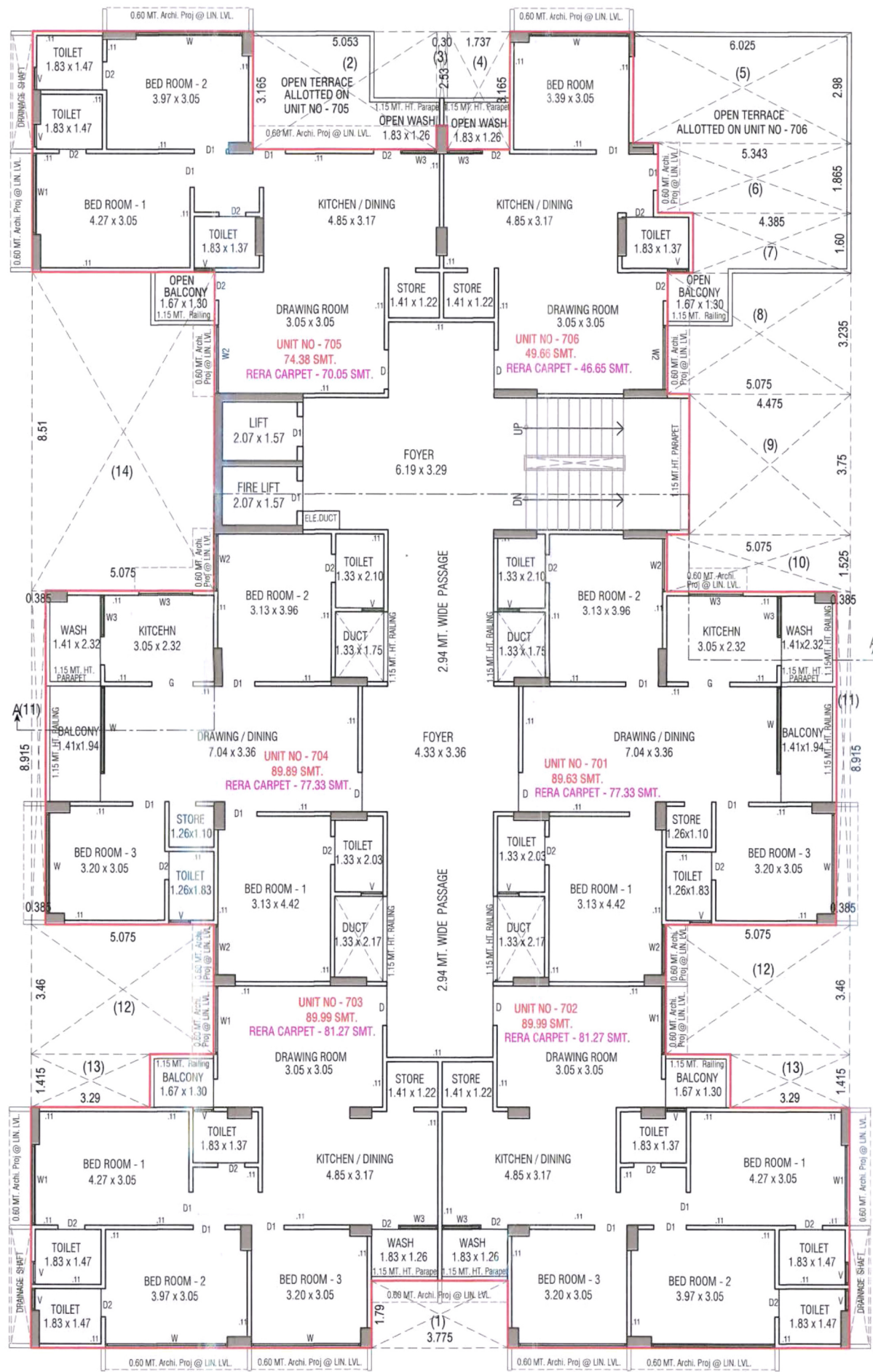
# PARTH AVENUE



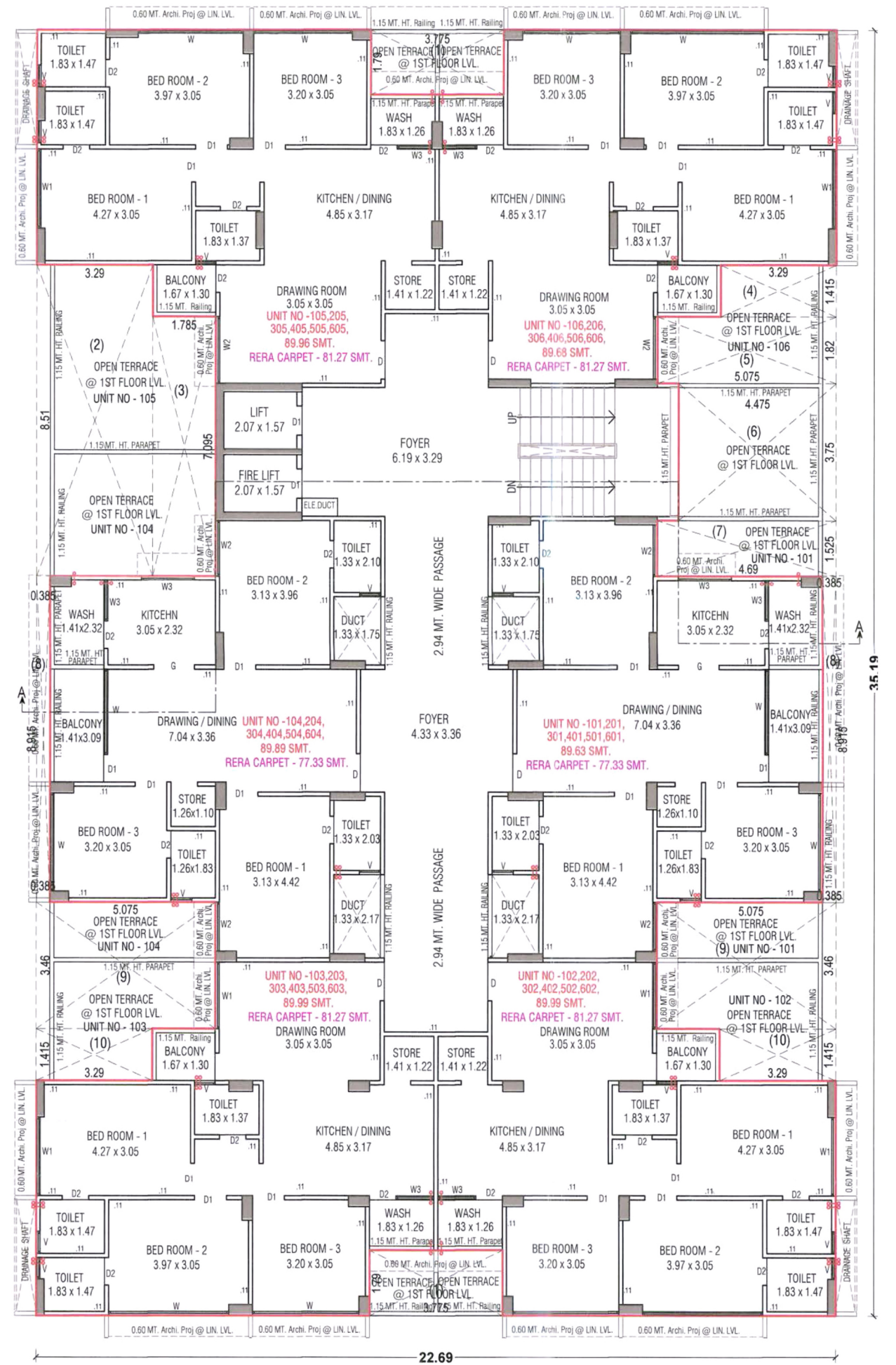






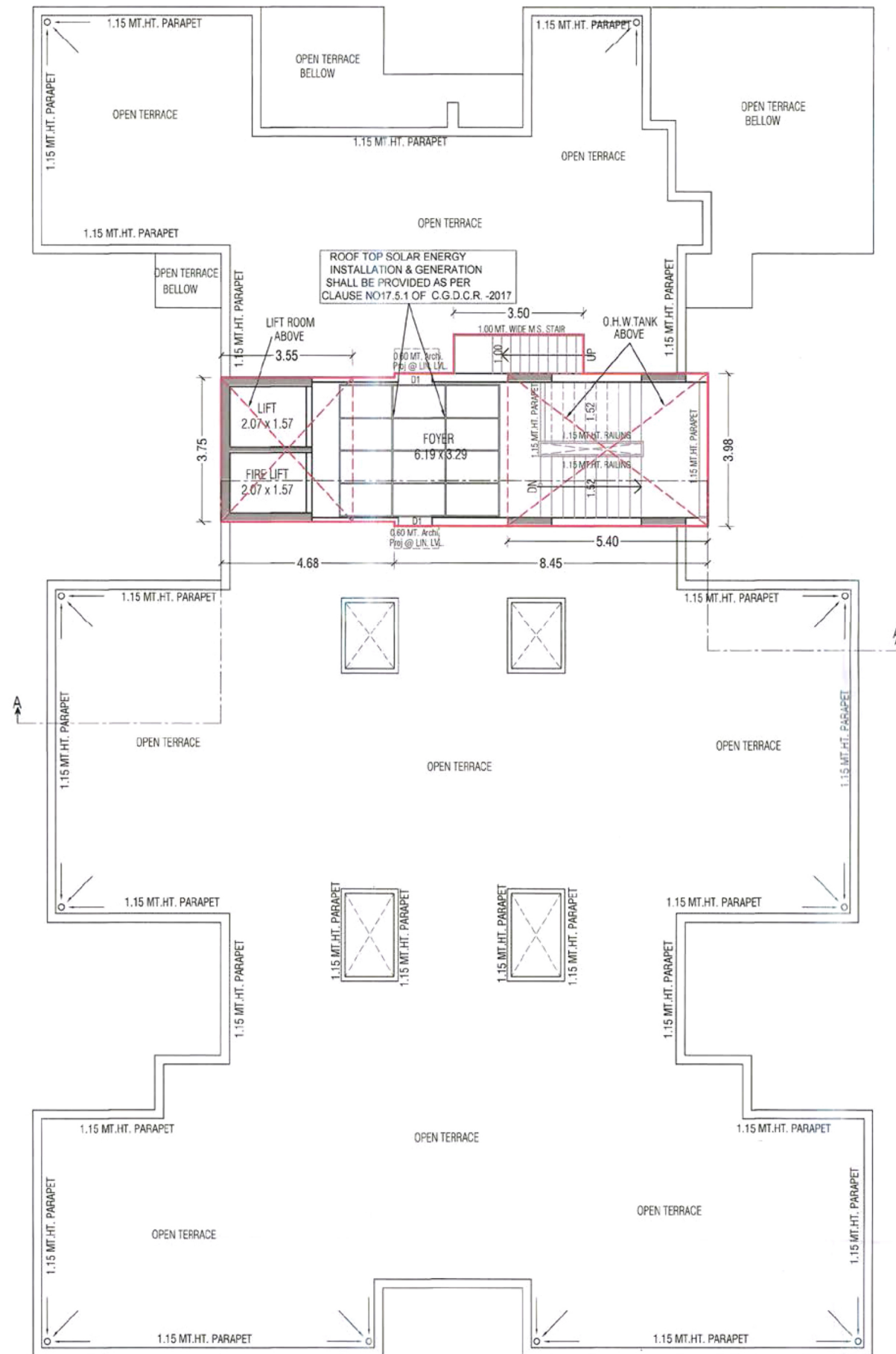


SEVENTH FLOOR PLAN



TYPICAL FLOOR PLAN  
FIRST FLOOR TO SIXTH FLOOR





**STAIR CABIN & OPEN TERRACE PLAN**

# PARTH AVENUE

## SPECIFICATIONS

### STRUCTURE

- R.C.C frame structure with partition wall.

### KITCHEN

- Granite finished platform with S.S sink, designer glazed tiles dado up to beam bottom level.
- Along with electric point for microwave oven, water purifier & freeze.

### WALLS

- All internal walls will be finished with putty over mala plaster.
- All external walls will be finished with double coat sand face plaster / texture.

### FLOORING

- Vitrified tiles in all rooms.

### DOORS & WINDOWS

- Decorative main entrance door and all the other doors are wooden framed with enamel painted flus door shutters.
- All windows will be anodized aluminium sliding with fully glazed.

### TOILETS

- Elegantly designed toilets with tiles up to lintel level, premium quality sanitary ware & fittings.

### ELECTRIFICATION

- ISI Copper flexibility wiring with adequate number of electric points & branded / ISI modular switches in all rooms.
- Centralized distribution board with MCBS for safety & protection.

### PLUMBING

- Concealed plumbing with standard pipe fitting and premium CP fitting.
- Common underground water tank and overhead water tank for continuous water supply.

### DISCLAIMER:

- Stamp duty, Registration Charges, Legal Documentation Charges, GST, ADDA & UGVCL charges including cable & substation cost shall be borne by the purchaser.
- Any additional charges or duties levied by the Government / Local authorities during or after completion of the scheme will be borne by the purchaser.
- In interest of developments in the design & quality of construction, to developer reserve all rights to make any changes in the scheme including and not limited to technical specifications, design, planning layouts & all purchasers shall abide by such changes.
- Changes / alteration of any nature including elevation, exterior color scheme, balcony grill or any other changes affecting the overall design concept & outlook of the scheme are strictly NOT PERMITTED during or after the completion of the scheme.
- Any RCC member (Beam, Column, Slab) must not be damaged during your interior work.
- This brochure is intended only to convey the essential design & technical features and does not form part of legal documents.
- For more information please refer our rera website and contact site incharge.