



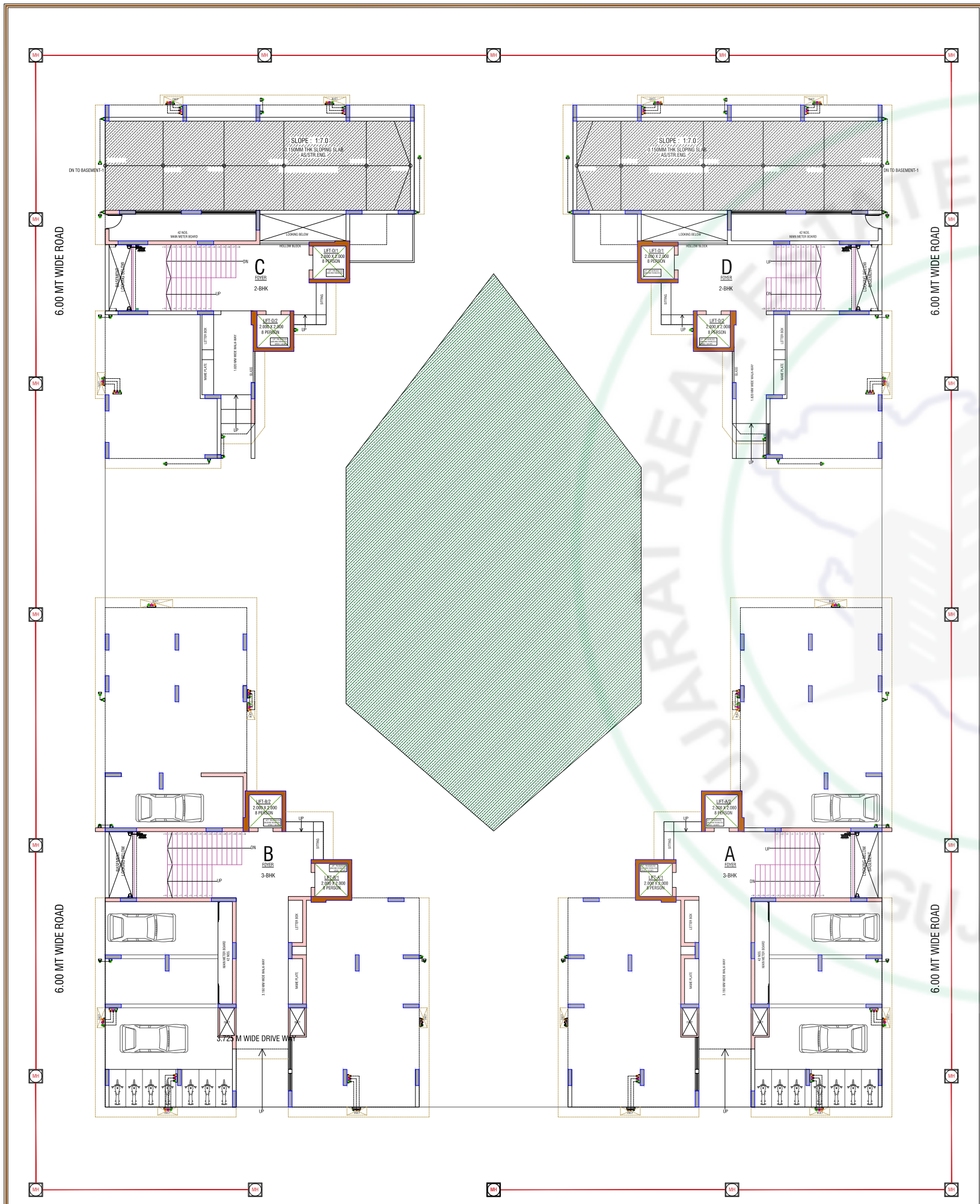
KABIR 
PARISAR

2 & 3 BHK *luxurious flats*

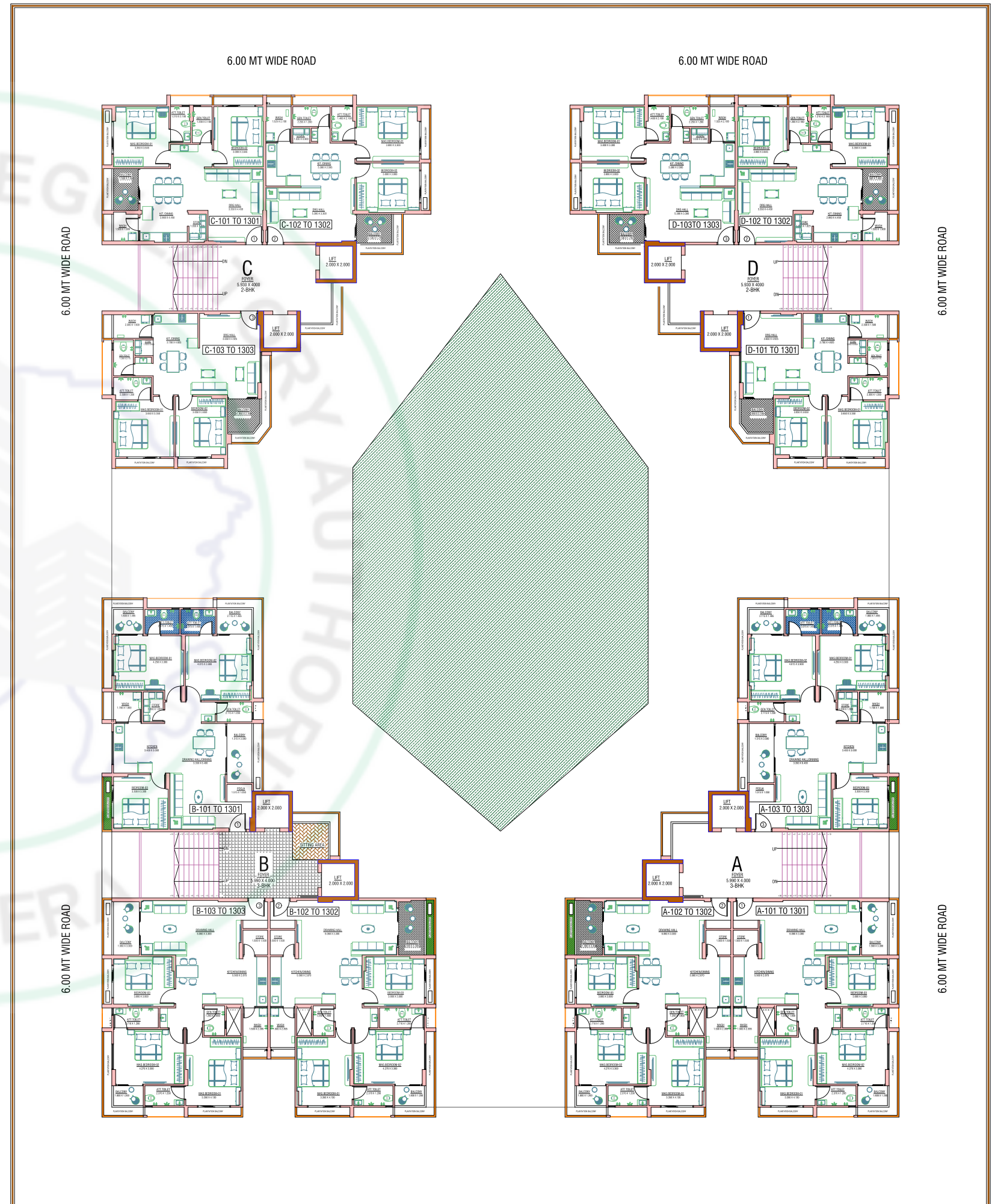




GROUND FLOOR

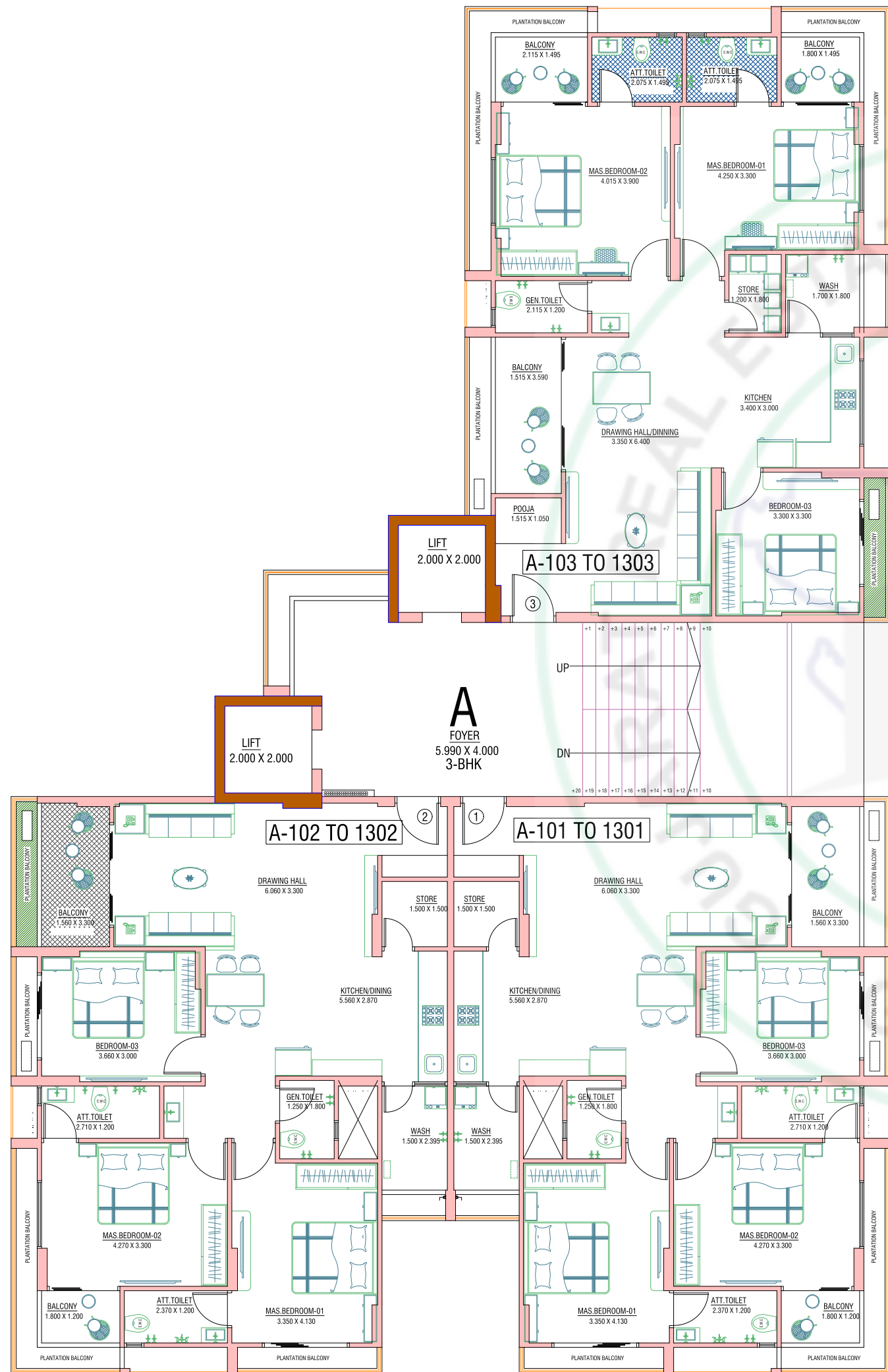


TYPICAL FLOOR

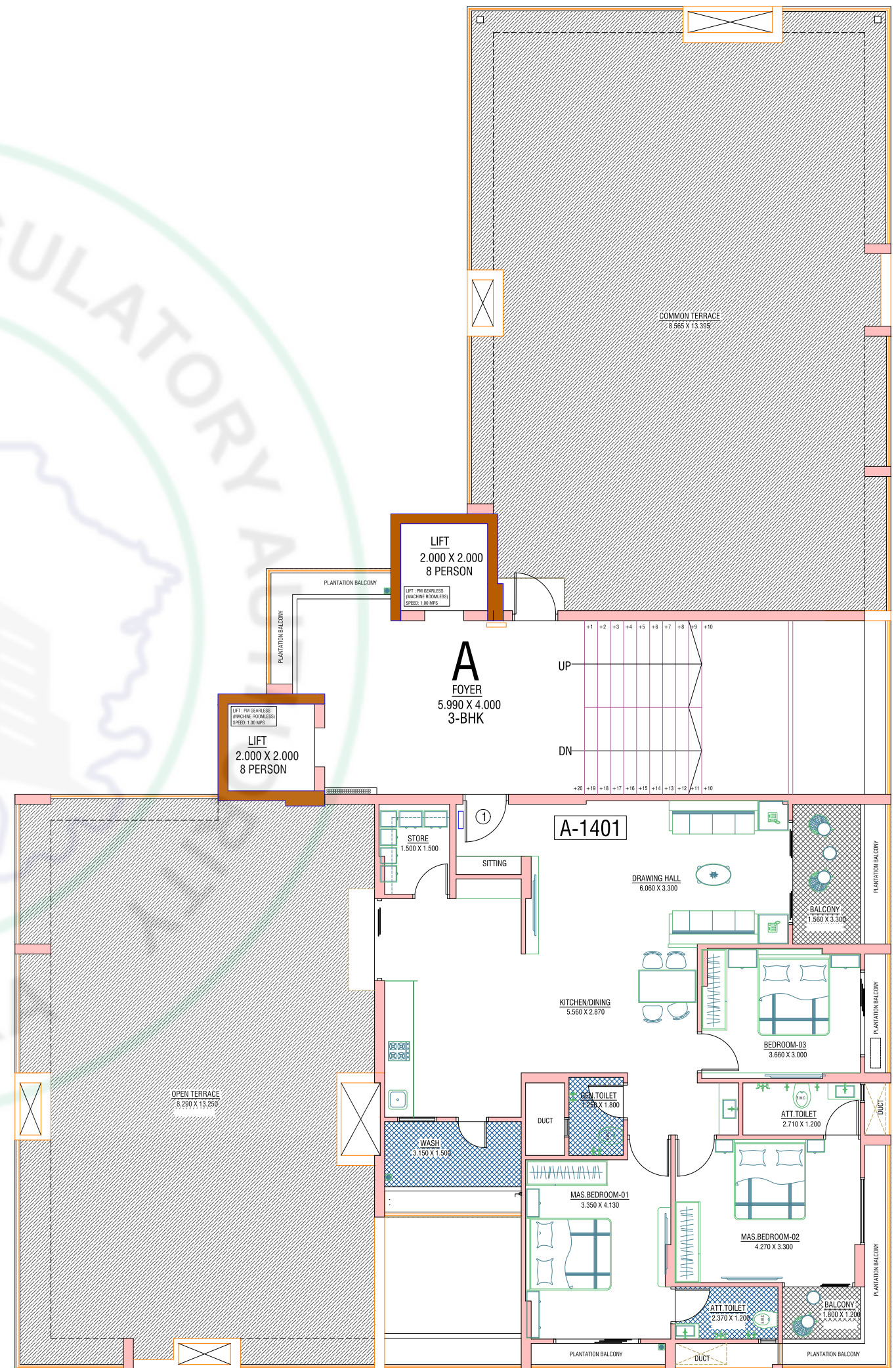




A-Block Typical Floor Plan

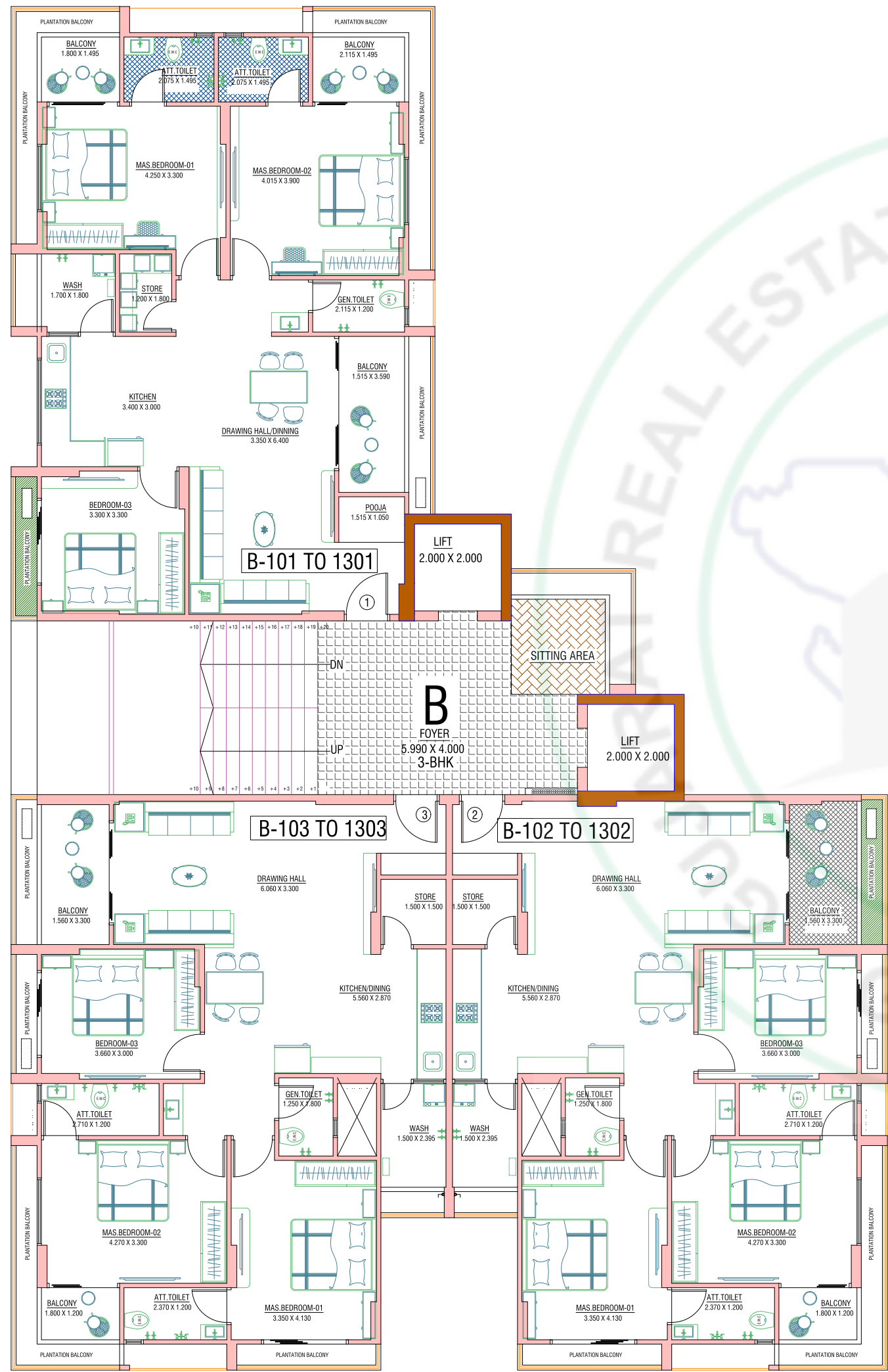


A-Block 14th Floor Plan

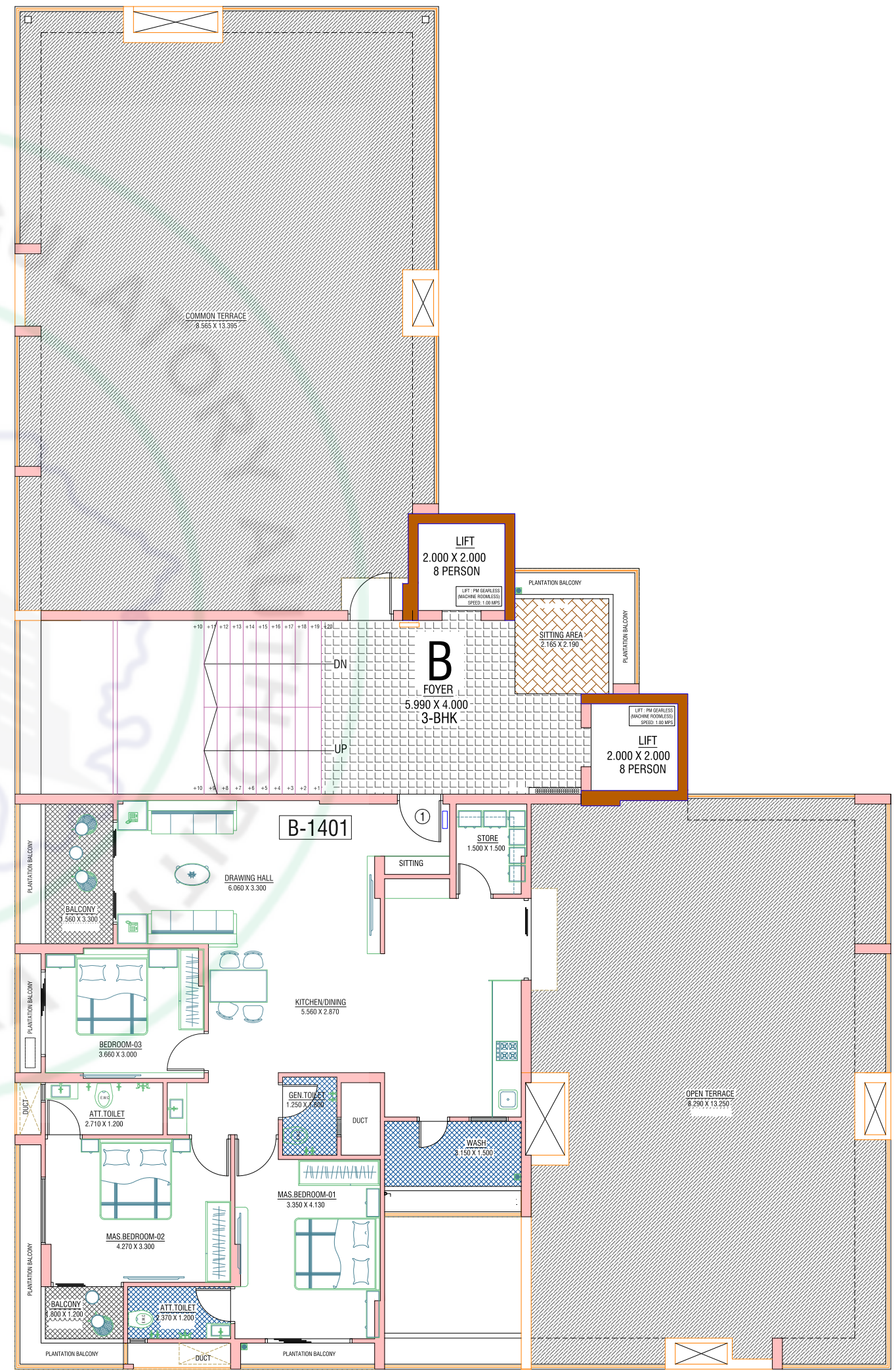




B-Block Typical Floor Plan

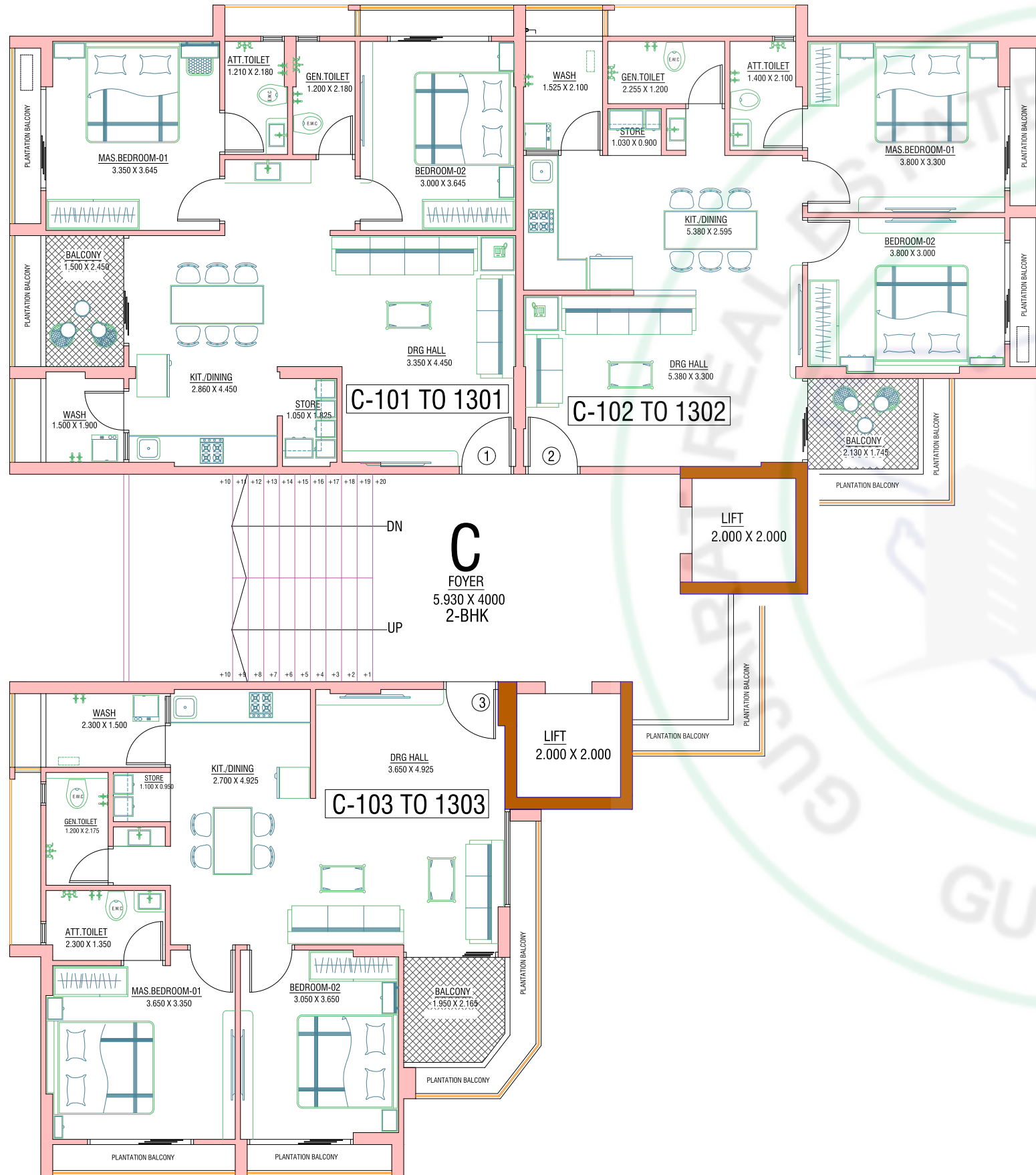


B-Block 14th Floor Plan

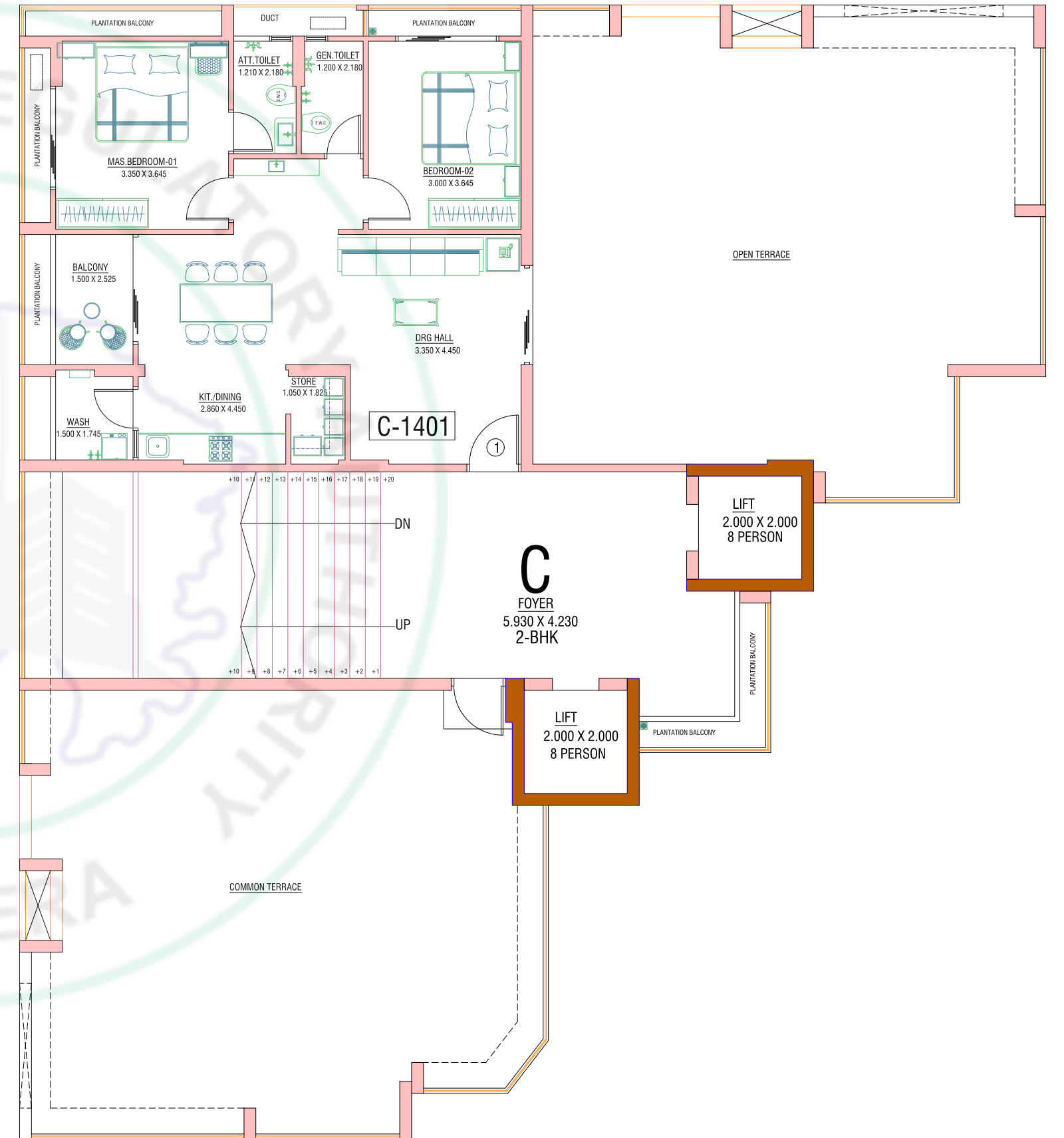




C - Block Typical Floor Plan

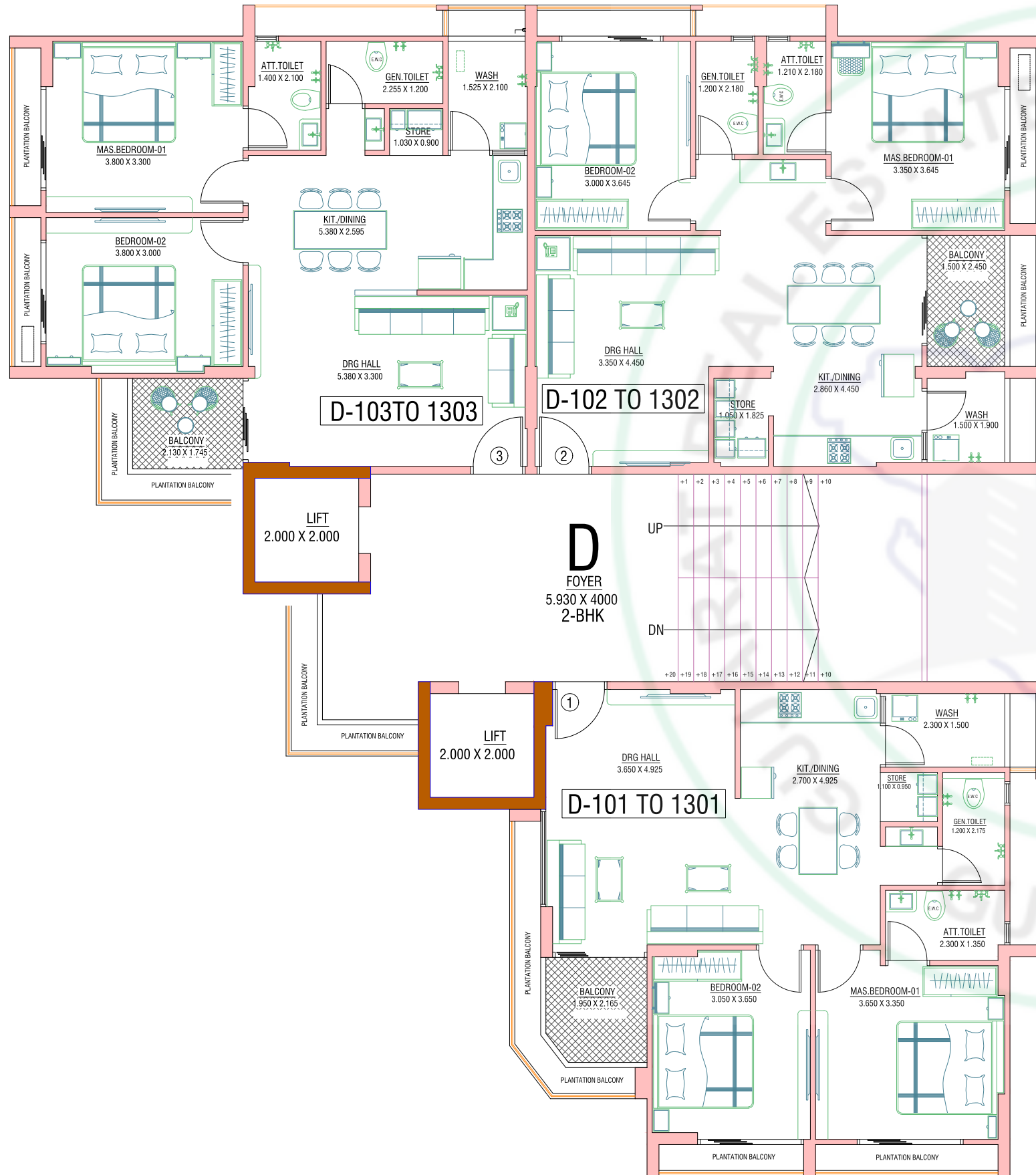


C-Block 14th Floor Plan

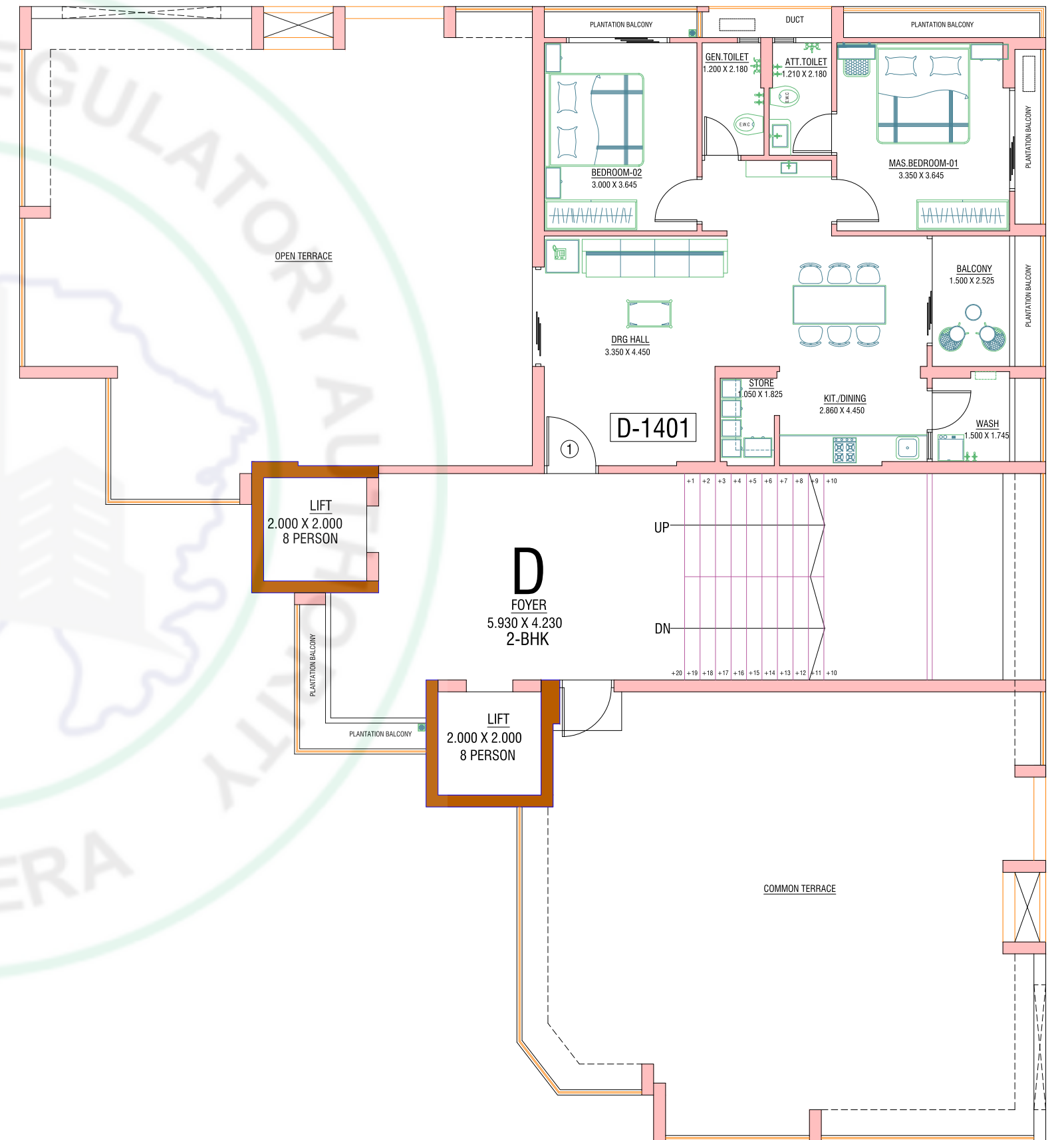




D-Block Typical Floor Plan

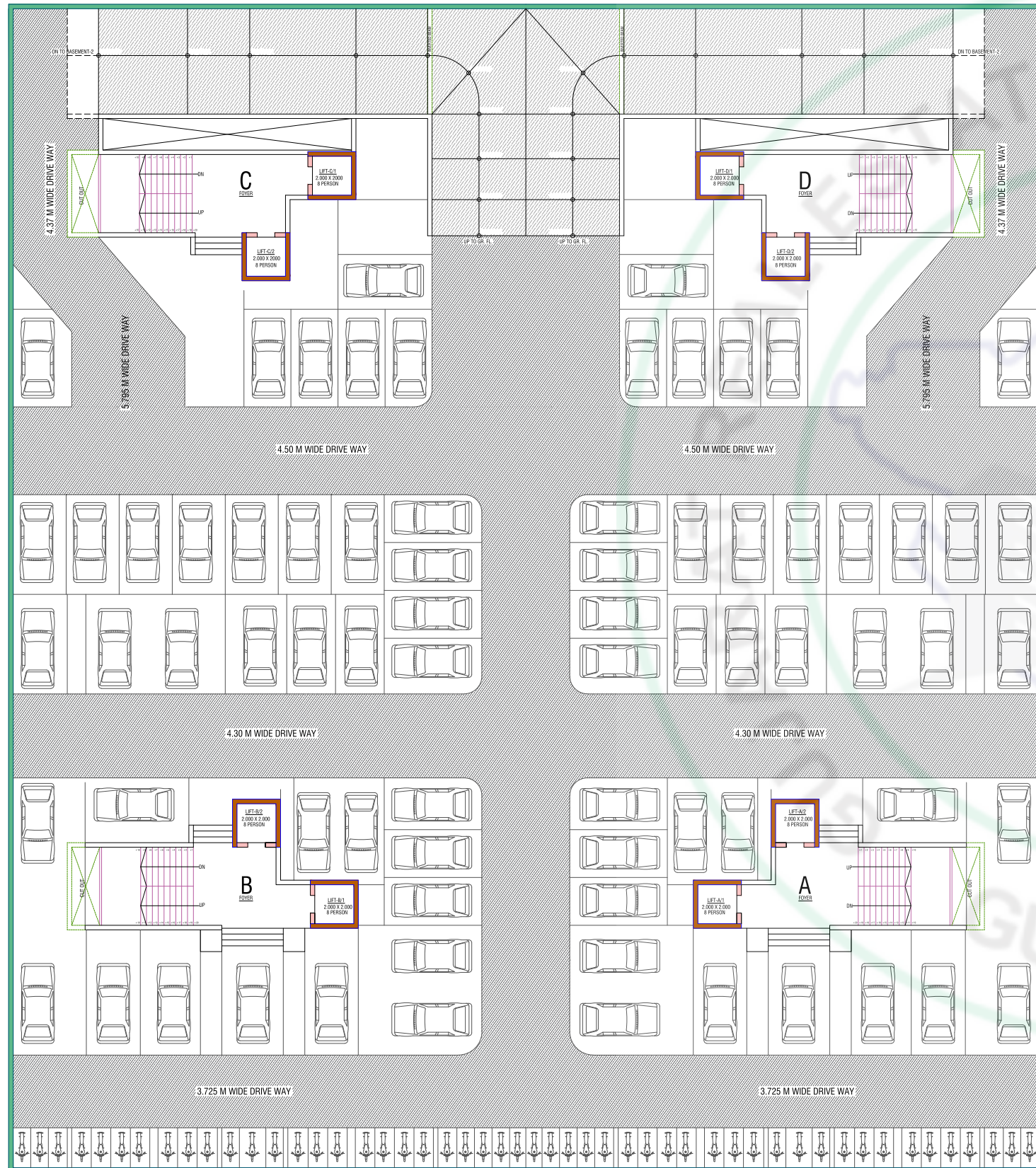


D-Block 14th Floor Plan





Basement-1 Floor Plan



Basement-2 Floor Plan

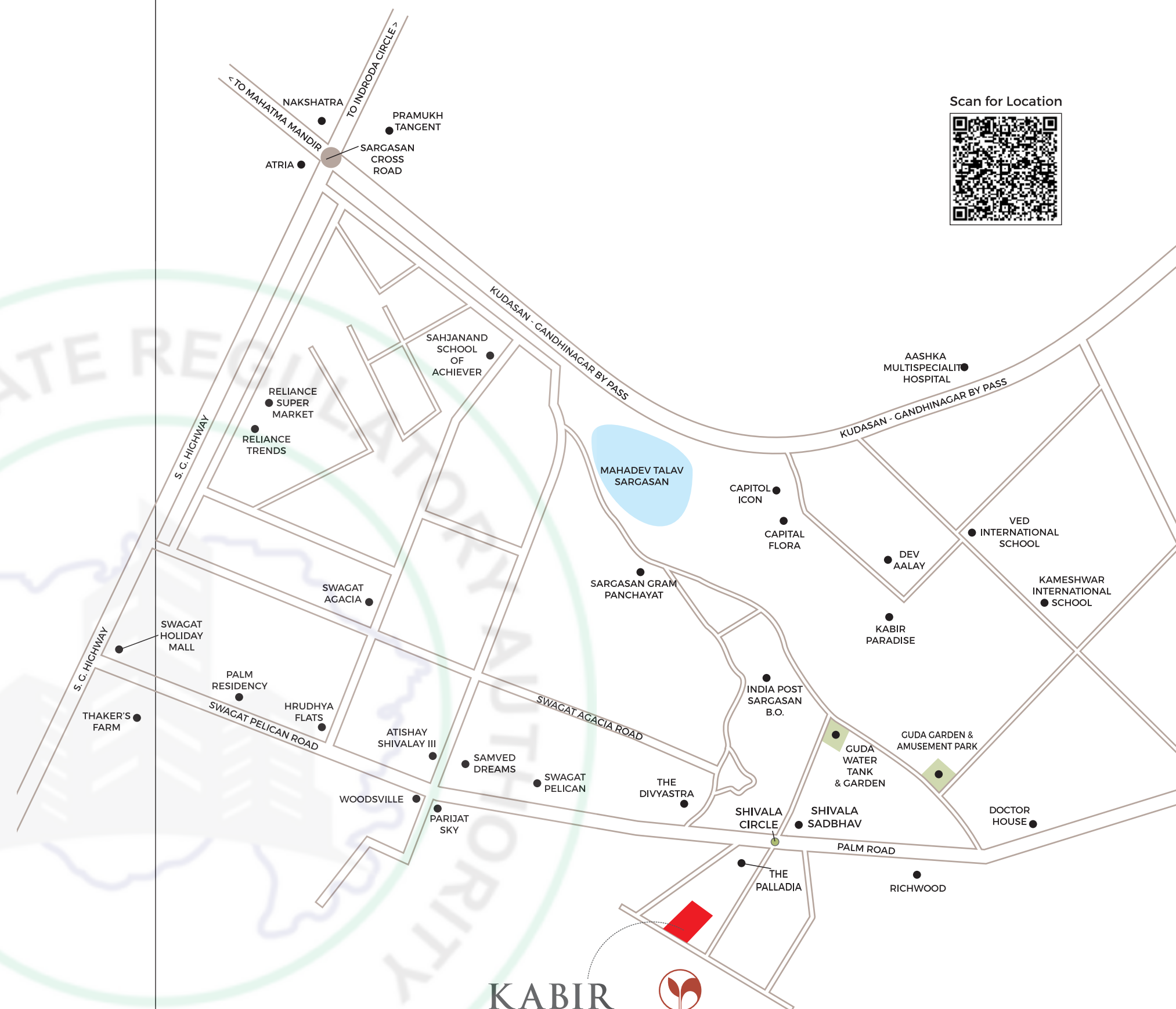




SPECIFICATION

-  **STRUCTURE**
R.C.C. frame Structure, Structure design as per IS code considering earthquake resistance.
-  **WALL FINISH**
Internal mala plaster with white finish putty. Attractive external elevation with double coat sand face plaster.
-  **WALL**
All internal walls will be finished with putty over mala plaster. All external wall will be finished with double coat mala plaster with texture with colour finish.
-  **FLOORING**
Premium quality designer vitrified tiles in drawing room dining area with kitchen and all bedroom area.
-  **DOOR & WINDOWS**
Decorative wooden polished main entrance door with brass fitting and fixtures. All other doors are flush doors. Fully / Galzed aluminum slider with stone revile.
-  **KITCHEN**
Ready to use granite finished platform with SS Sink, Designer glazed tiles with dado up to beam level. Plumbing and electrical provisions for water purifier & washing Machine
-  **ELECTRIFICATION**
Concealed copper wiring with adequate number of electrical points & branded modular switches. TV point in drawing room & AC points in all bedrooms.
-  **PLUMBING**
Concealed plumbing with premium quality pipes and fittings for continuous water supply.
-  **TOILET**
Full covered elegantly designed toilets with designer tiles and colour coordinated sanitary ware.
-  **TERRACE**
Open terrace finished with suitable water proofing with China - Mosaic Flooring for heat reflection

Scan for Location










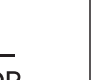
KABIR PARISAR

Site :

Survey No 207 , Opp Paladia, Near Shreerang Neno City, Palm Road, Sargasan-382421.

Contact : 98 79 30 74 37
Email : shivalaybuildcon2023@gmail.com

Abundant Amenities

- 
LANDSCAPE GARDEN
- 
SECURITY ROOM
- 
FIRE SAFETY
- 
ENTRANCE GATE
- 
BASEMENT PARKING
- 
CHILDREN PLAY AREA
- 
CCTV CAMERA
- 
ELEVATOR

Developer
SHIVALAY BUILDCON

Architect
HNS DESIGN

Structure
HNS DESIGN



Developer



Site :

Survey No 207 , Opp Paladia,
Near Shreerang Neno City, Palm Road,
Sargasan-382421.

Contact : 98 79 30 74 37
Email : shivalaybuildcon2023@gmail.com

Rera No. :

Website :