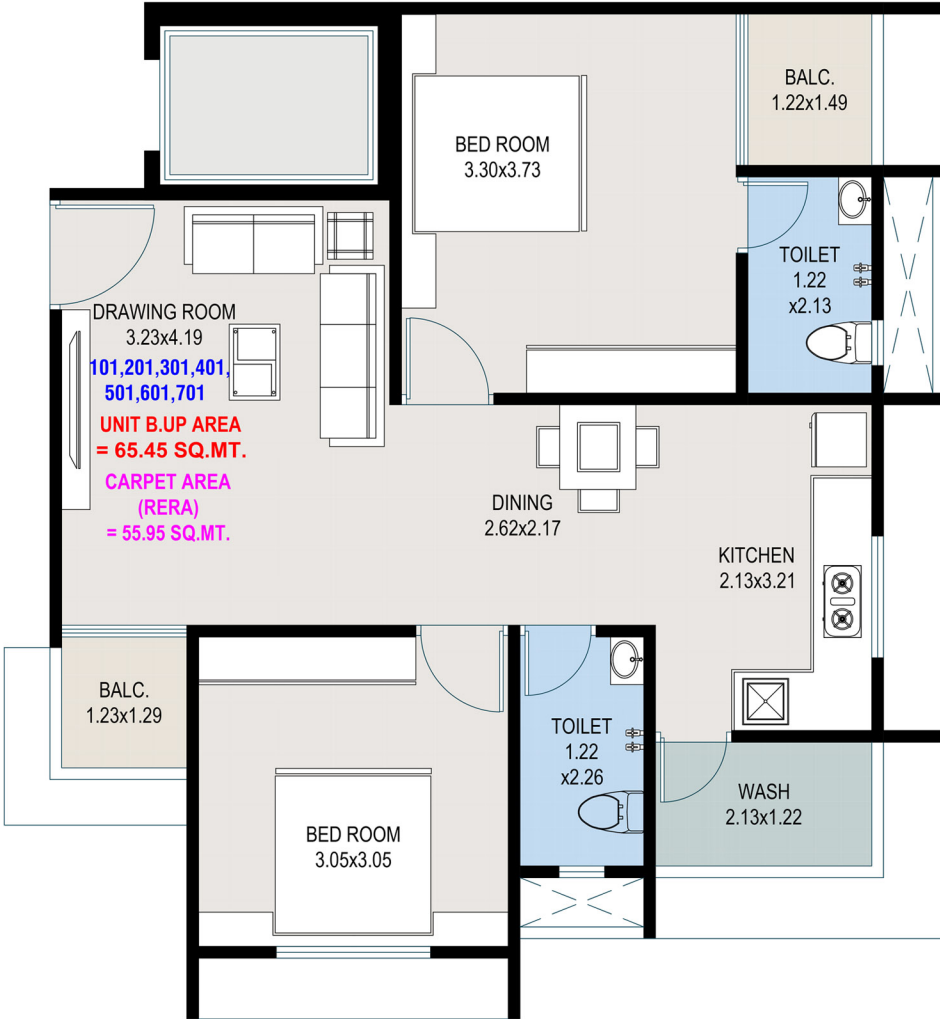


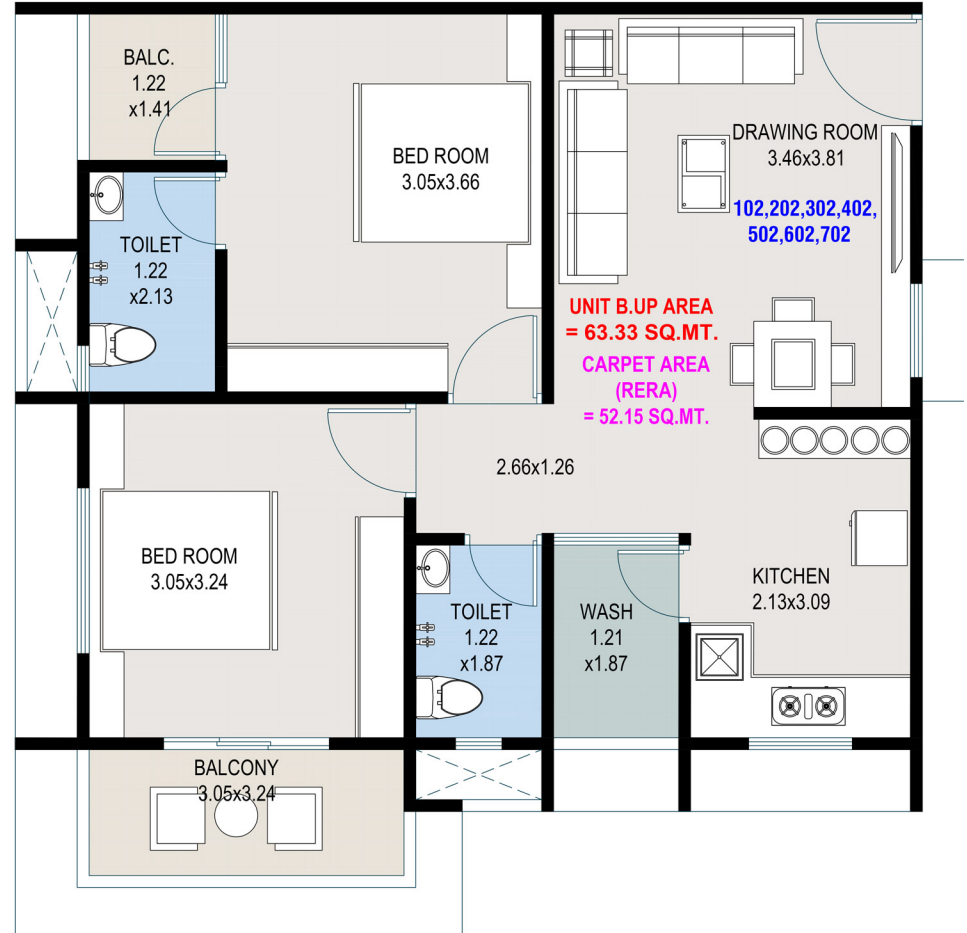
Krishna Residency @ Vastral



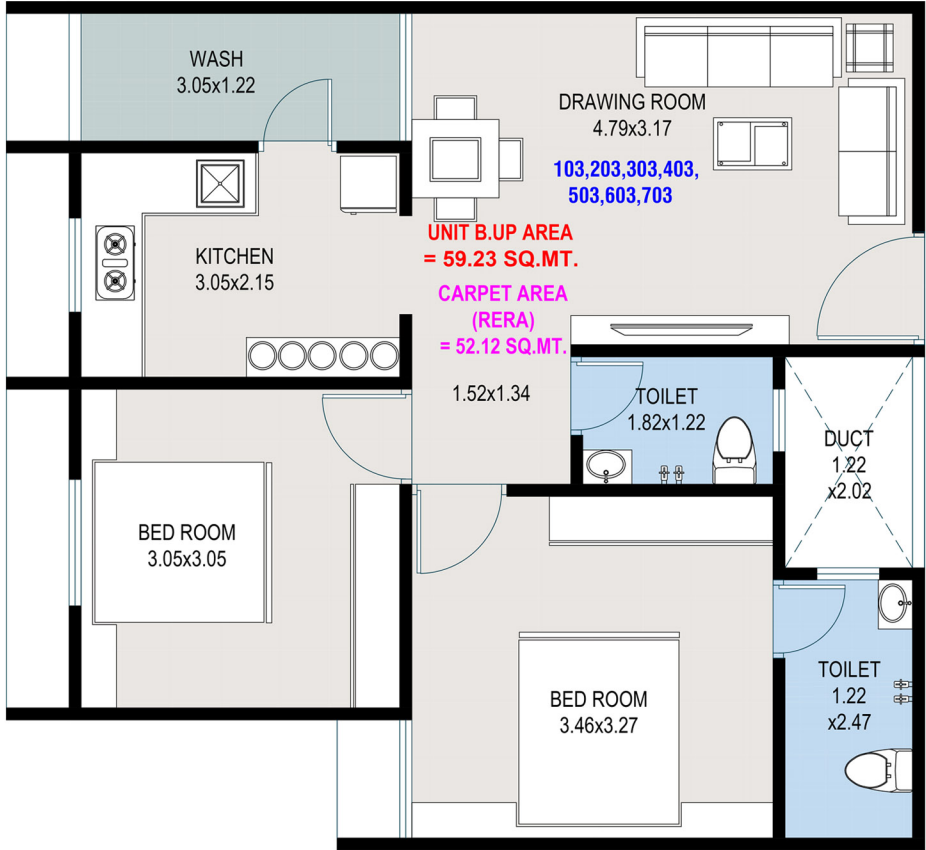
PROJECT BY : **SAVI KOVINA BUILDCON**



UNIT 101 to 701



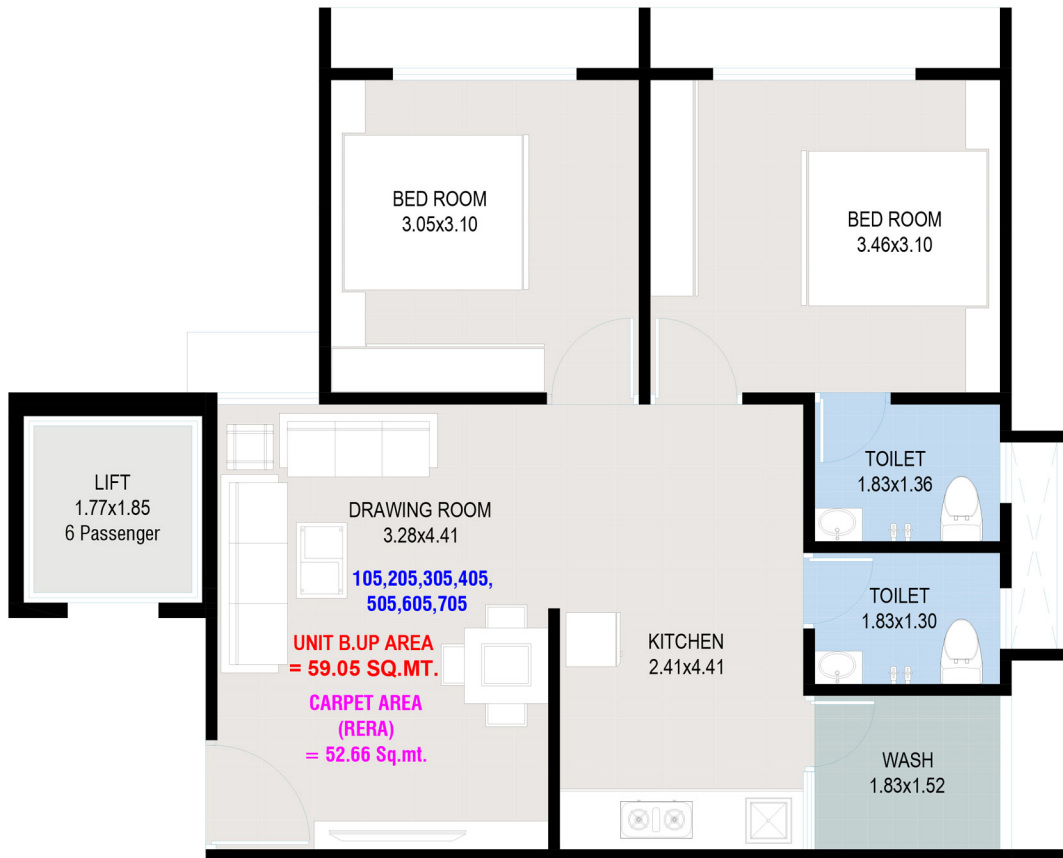
UNIT 102 to 702



UNIT 103 to 703



UNIT 104 to 704



UNIT 105 to 705

SPECIFICATIONS

FLOORING

Vitrified Tiles Flooring in drawing room and dining and ceramic tiles flooring in other area.

DOORS AND WINDOWS

Decorative main door, Wooden doors and fully glazed aluminum section windows

WALL FINISH

Internal smooth finished plaster with white putty, External Sand face plaster with acrylic paint

ELECTRIFICATION

Concealed copper wiring with sufficient electric points in all rooms

KITCHEN

Granite platform with S.S. sink and tiles upto lintel level

TOILET

Glazed tile dado up to lintel level in all toilets

NOTES

All rights reserved with the organizers to make any changes in the scheme and the members shall abide by such changes.

Stamp duty, registration charges and service taxes or any other charges and taxes if levied by the government or its body shall be borne by member

This brochure is not to be treated as part of the legal document and is for an easy display of project

Only internal changes shall be allowed with prior permission and shall be charged extra

Subject to Ahmedabad Jurisdiction only

