

UPASANA

APARTMENT

A LUXURIOUS 3BHK LIVING

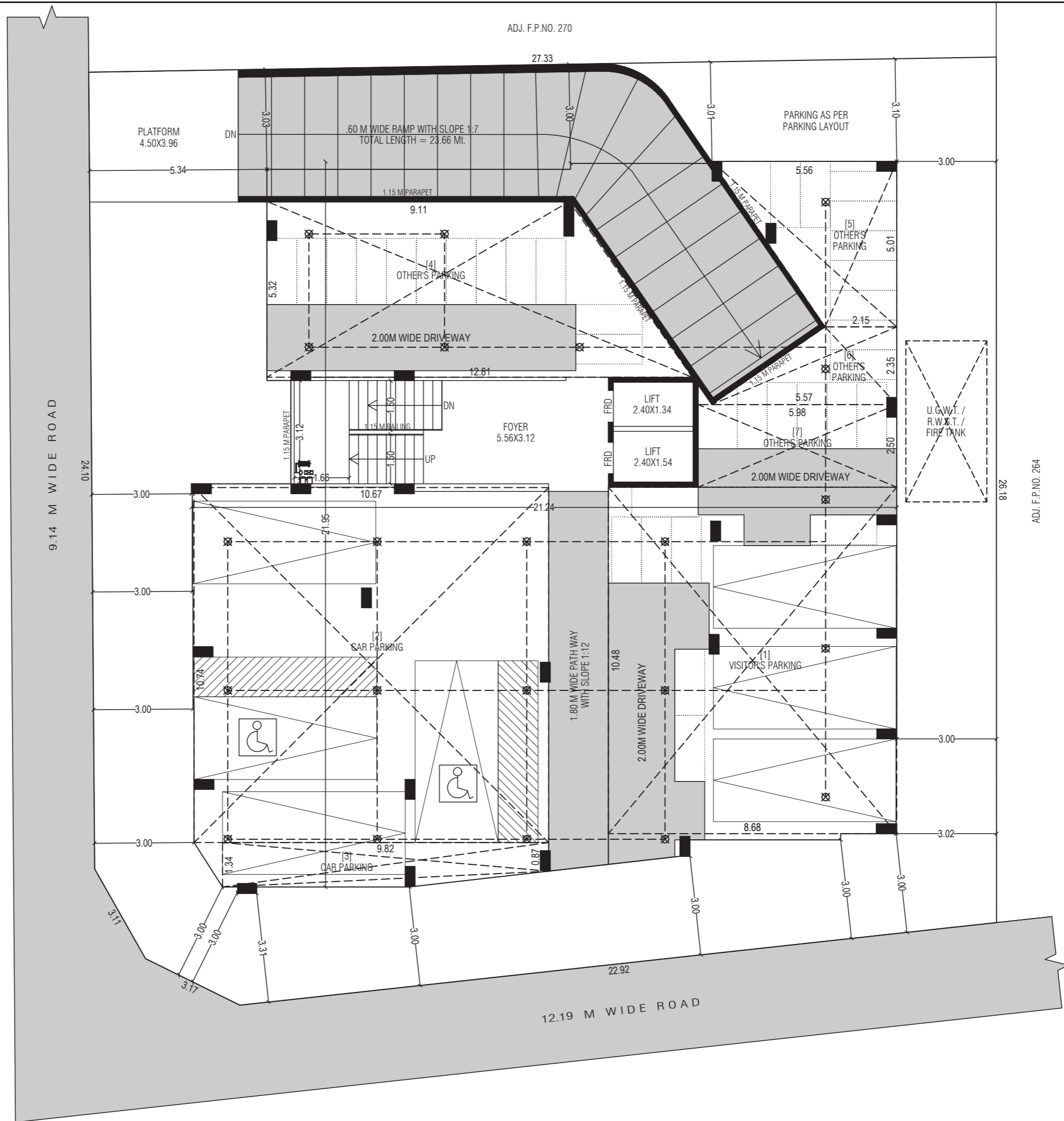
A PROJECT BY :

SGP

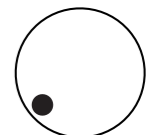
DEVELOPERS

CONTACT NO. 9913360062

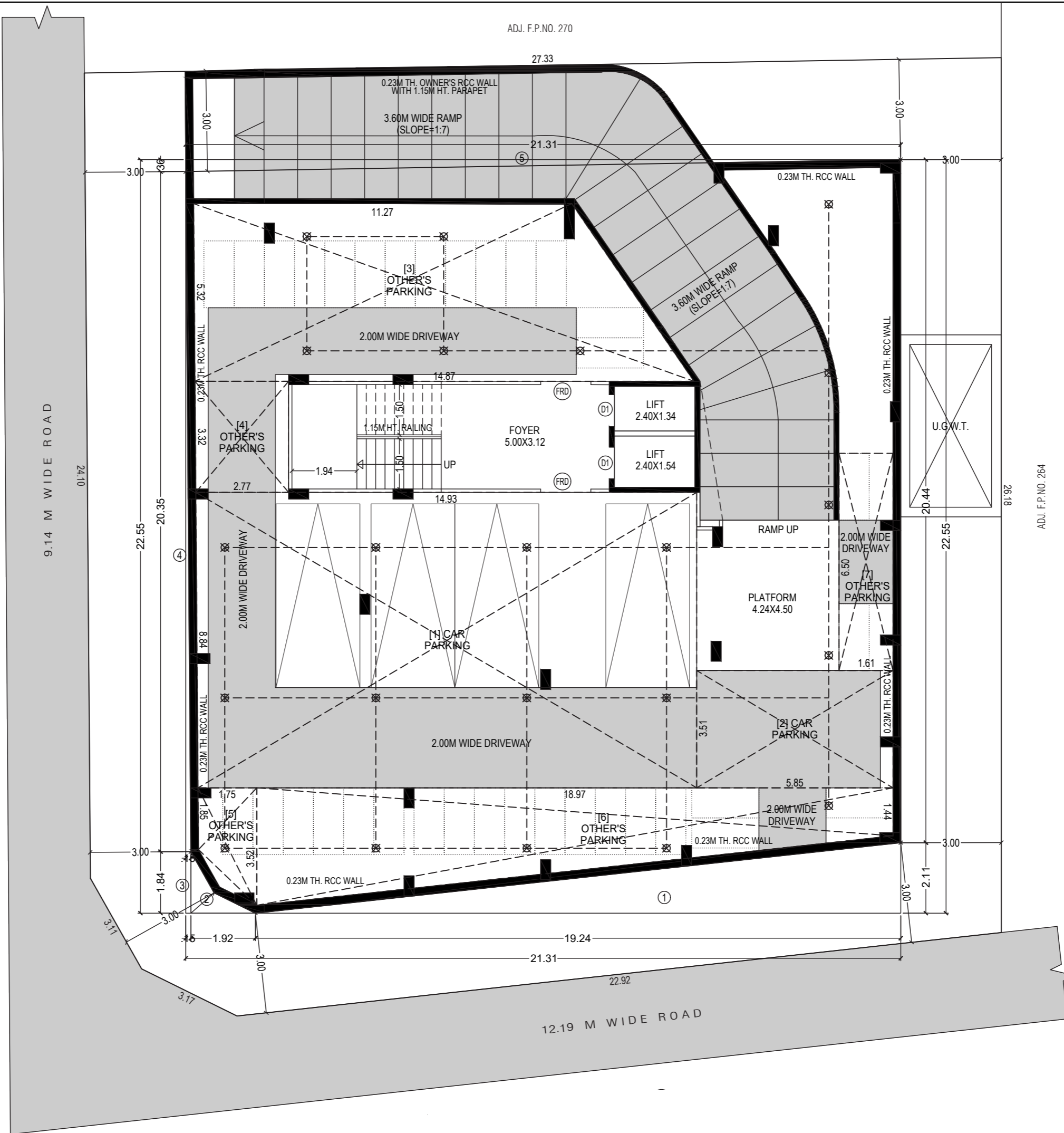




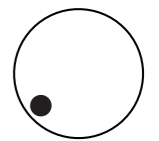
GROUND FLOOR PLAN

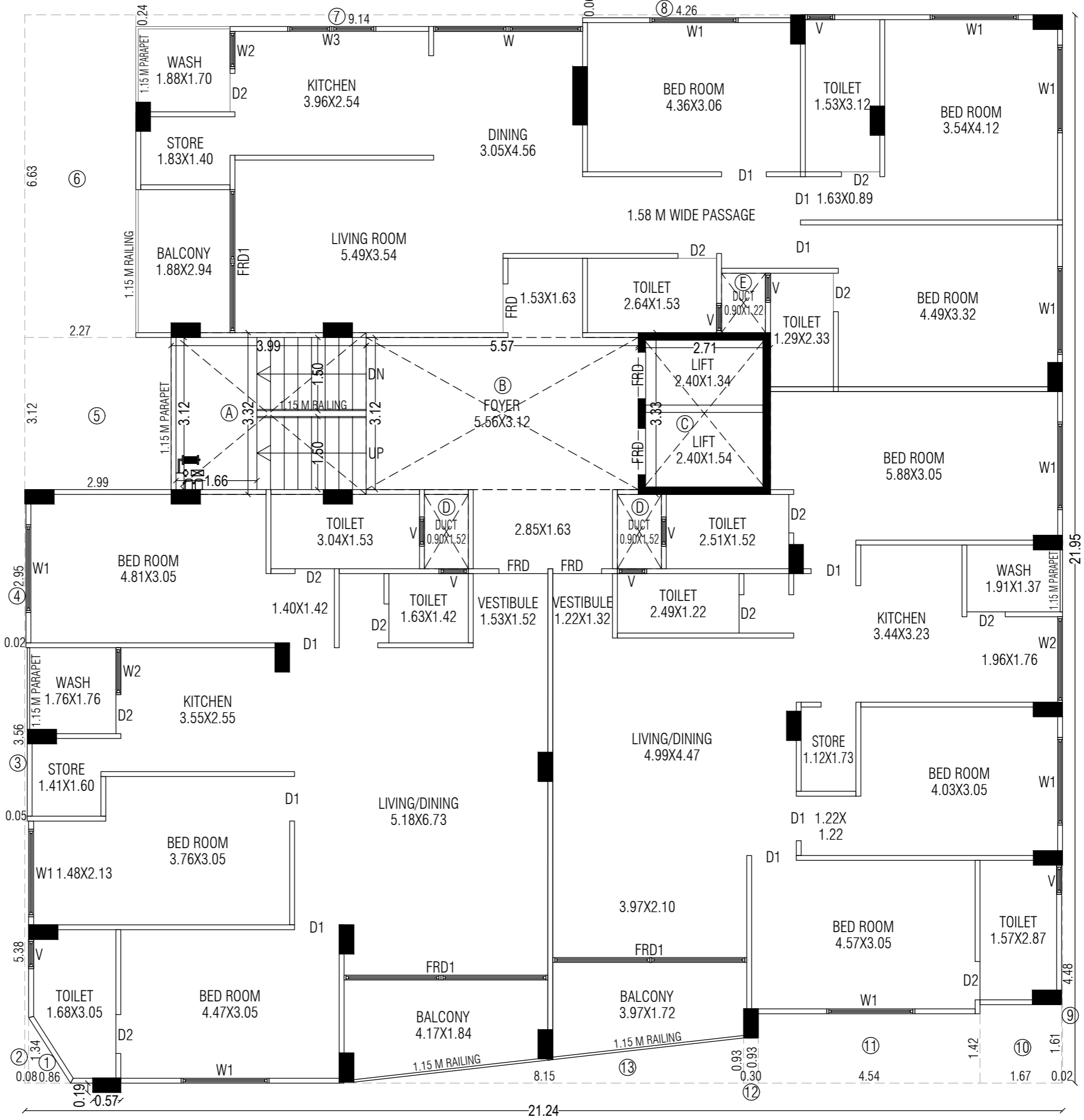


BASEMENT PLAN

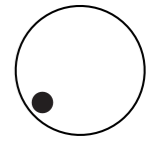


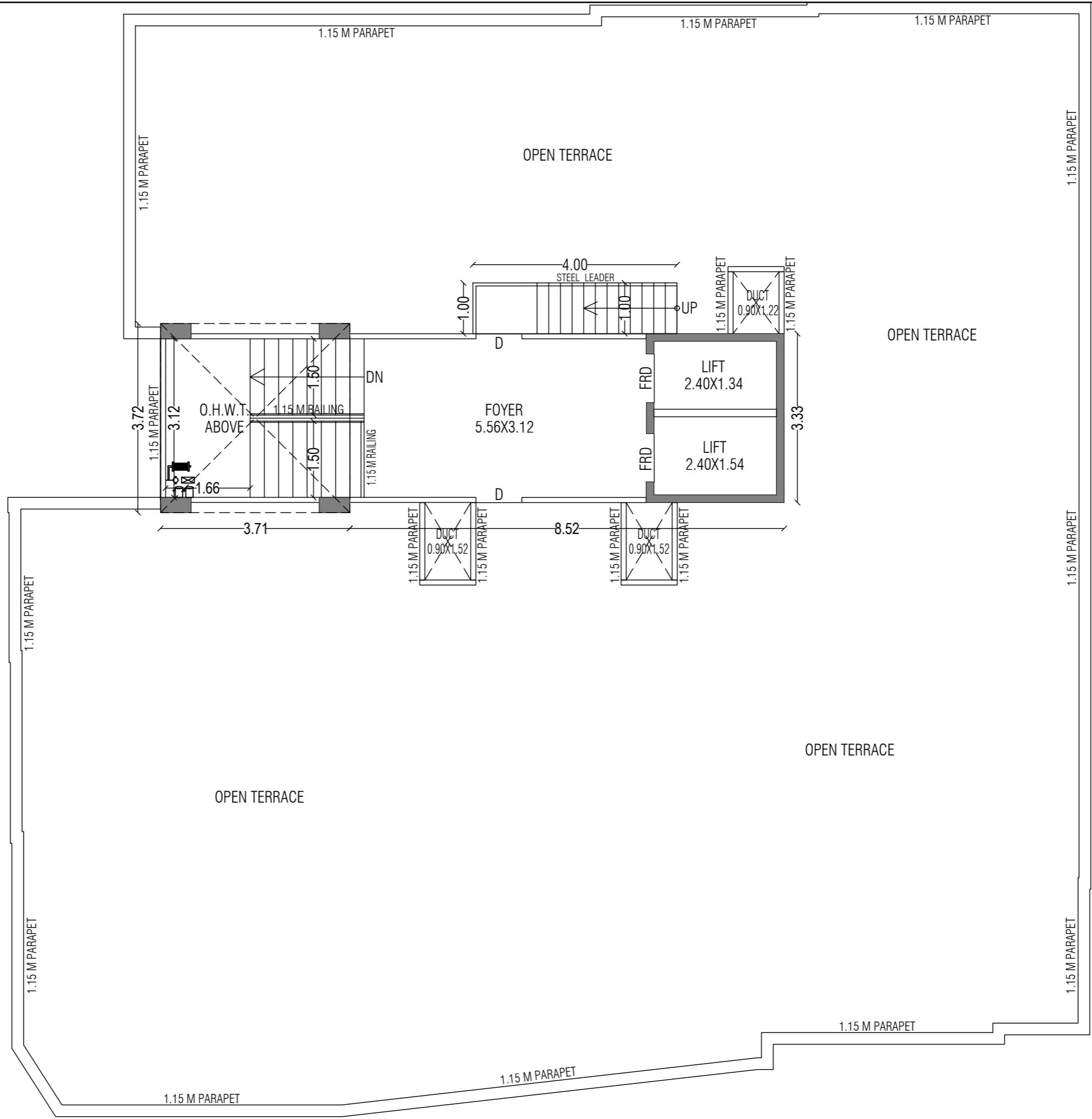
ADJ. F.P.NO. 264





TYPICAL FLOOR PLAN

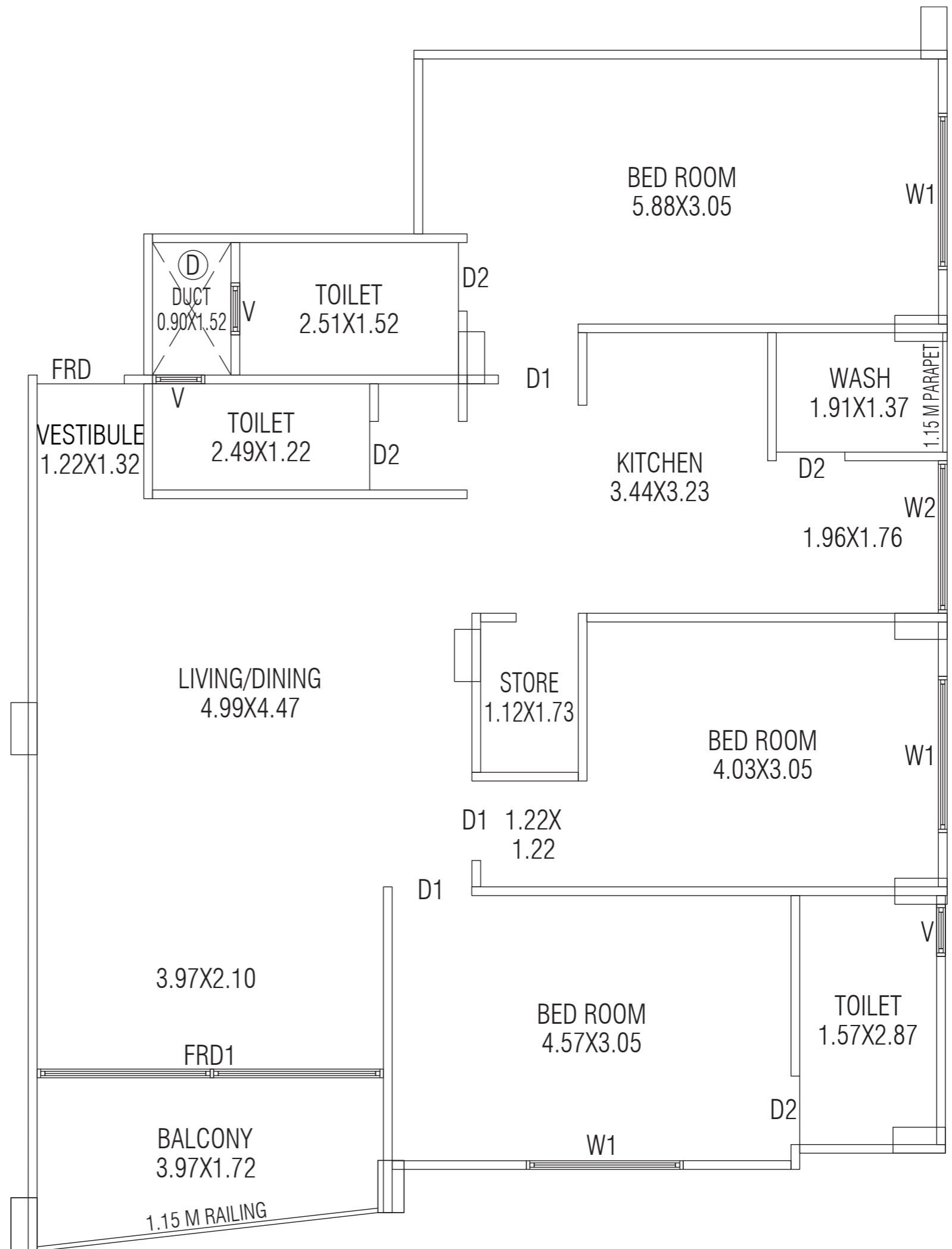
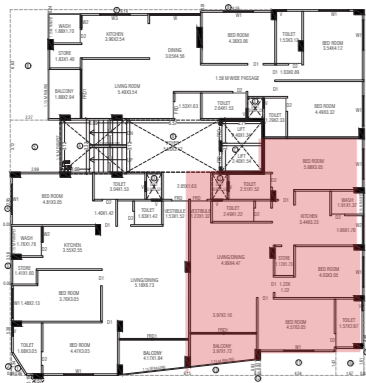


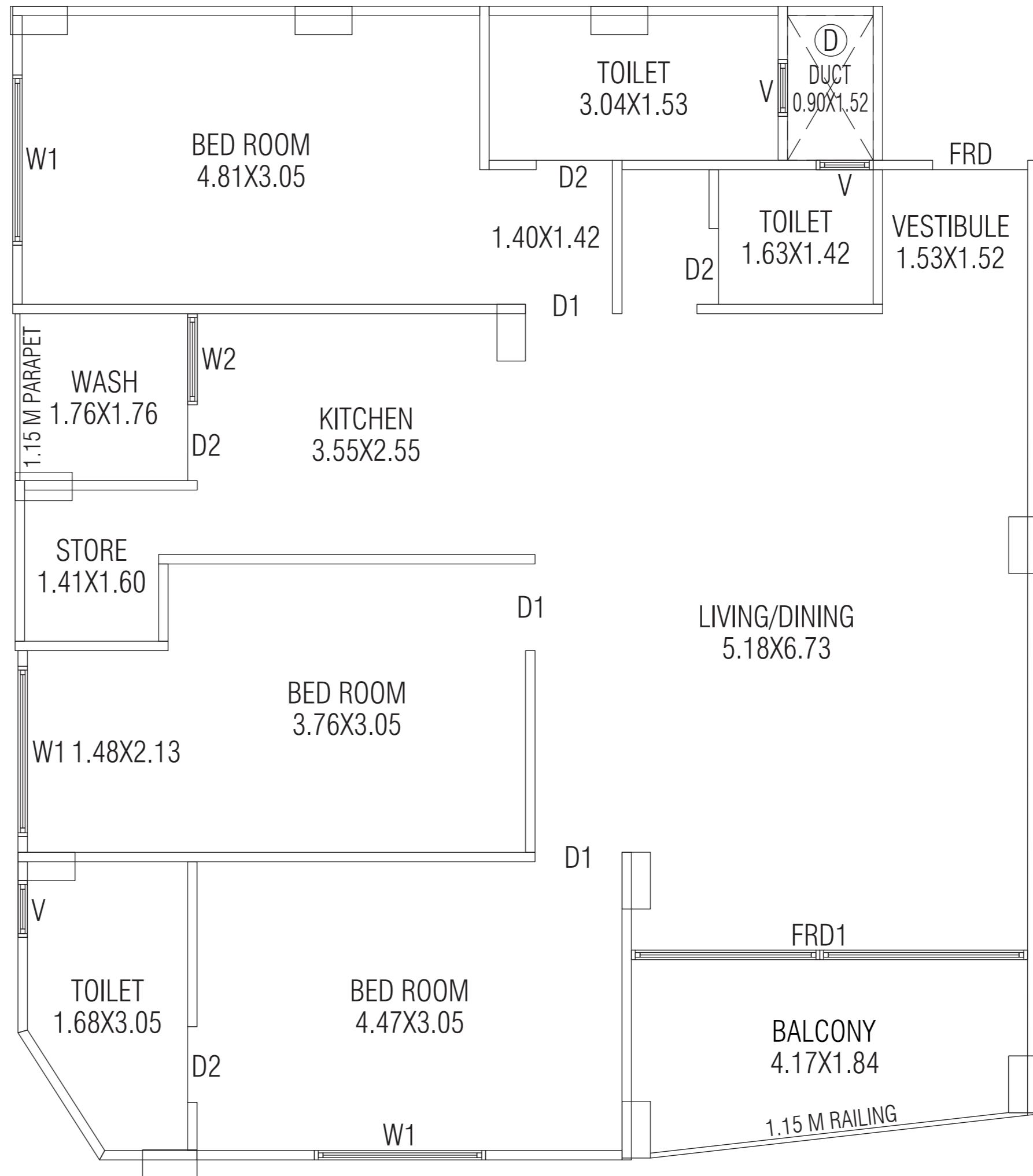


TERRACE FLOOR PLAN

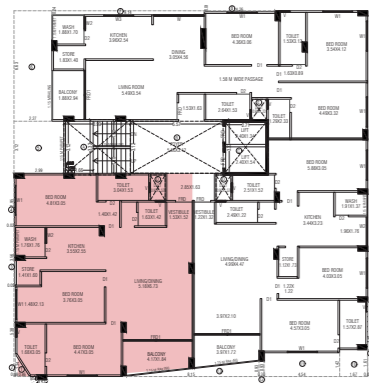
WING A

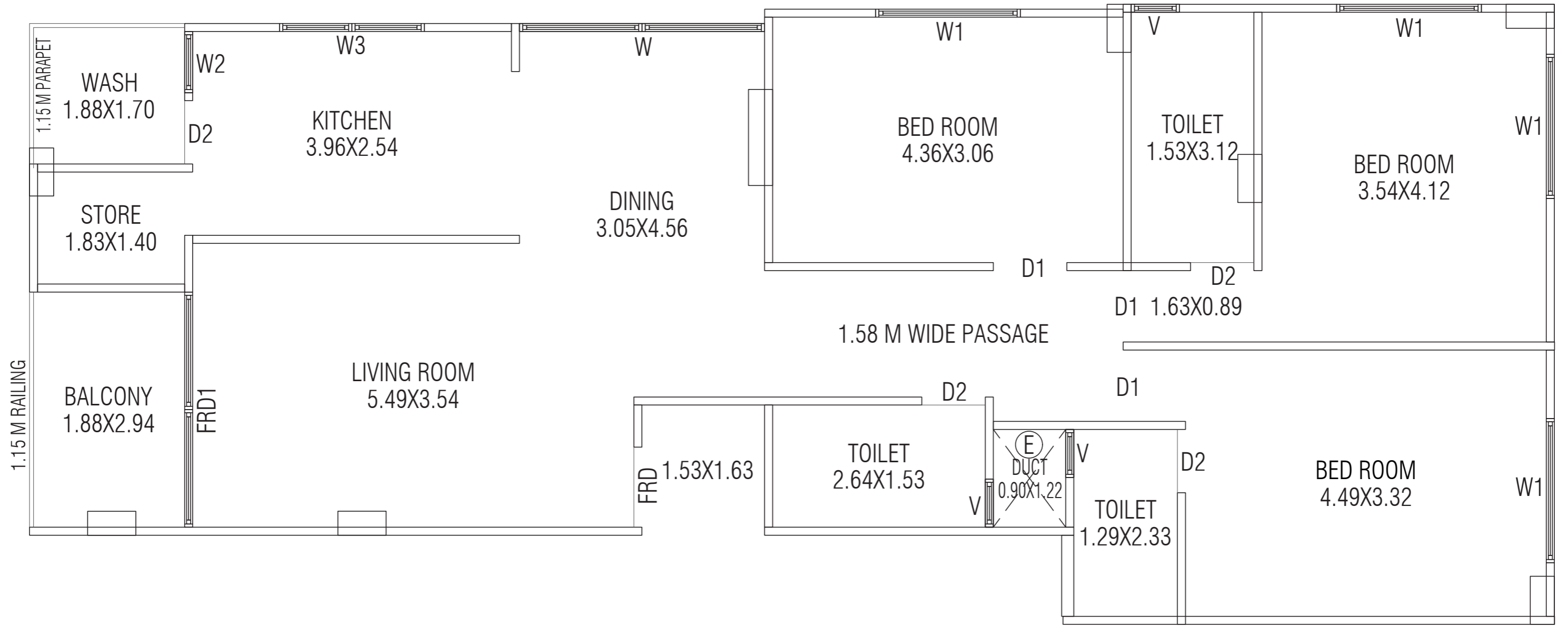
102 TO 702





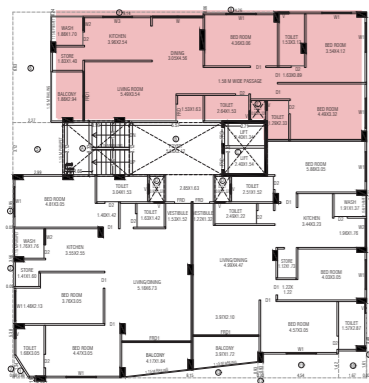
WING B
103 TO 703





WING C

101 TO 701



Specifications:

Flooring:

800 mm X 800 mm Double charged vitrified Tiles in Living, Dining and kitchen area.

600 mm X 600 mm Double charged vitrified Tiles in all the three bedrooms.

Kitchen:

Granite platform with S.S. Sink base and vitrified tiles up to lintel level.

Glazed tiles in store room and Kota shelves.

Balcony:

Balcony with Anti skid or Rustic tiles.

Bathroom:

Glazed vitrified tiles till lintel level.

Anti skid flooring tiles.

Sanitary fittings (jaguar or similar make)

Inlet and outlet pipes (Astral or similar make)

Waterproofing and damp systems in all bathroom and balcony areas.

Doors:

Main Flush door with Wooden frame and laminated on both side

All internal wooden flush door and granite frame

Windows:

Alluminium anodized sections with granite jambs.

Electrification:

3 phased Concealed ISI cable copper wiring with modular switches.
Tv points to be placed in drawing room and bedrooms, telephone point in living room and Air conditioner points in all bedrooms and Living room.

Geyser points in all bathrooms.

All other necessary points will be provided.

Services:

Bore well and municipal water connection with sensory pumps attached to pressure pump.

Adani gas pipelines in all apartments with meters.

FRONT ELEVATION



SIDE ELEVATION





SITE ADDRESS:
UPASANA FLAT, OPP. L. COLONY,
POLYTECHNIC, B/H GANDHIYA RATH,
NEHRUNAGAR, AHMEDABAD
CONTACT NO. 9913360062

ARCHITECT:
VIRAASAT
ARCHITECTS

STRUCTURE:
VIRAASAT
ARCHITECTS

PROJECT BY:
SGP
DEVELOPERS