



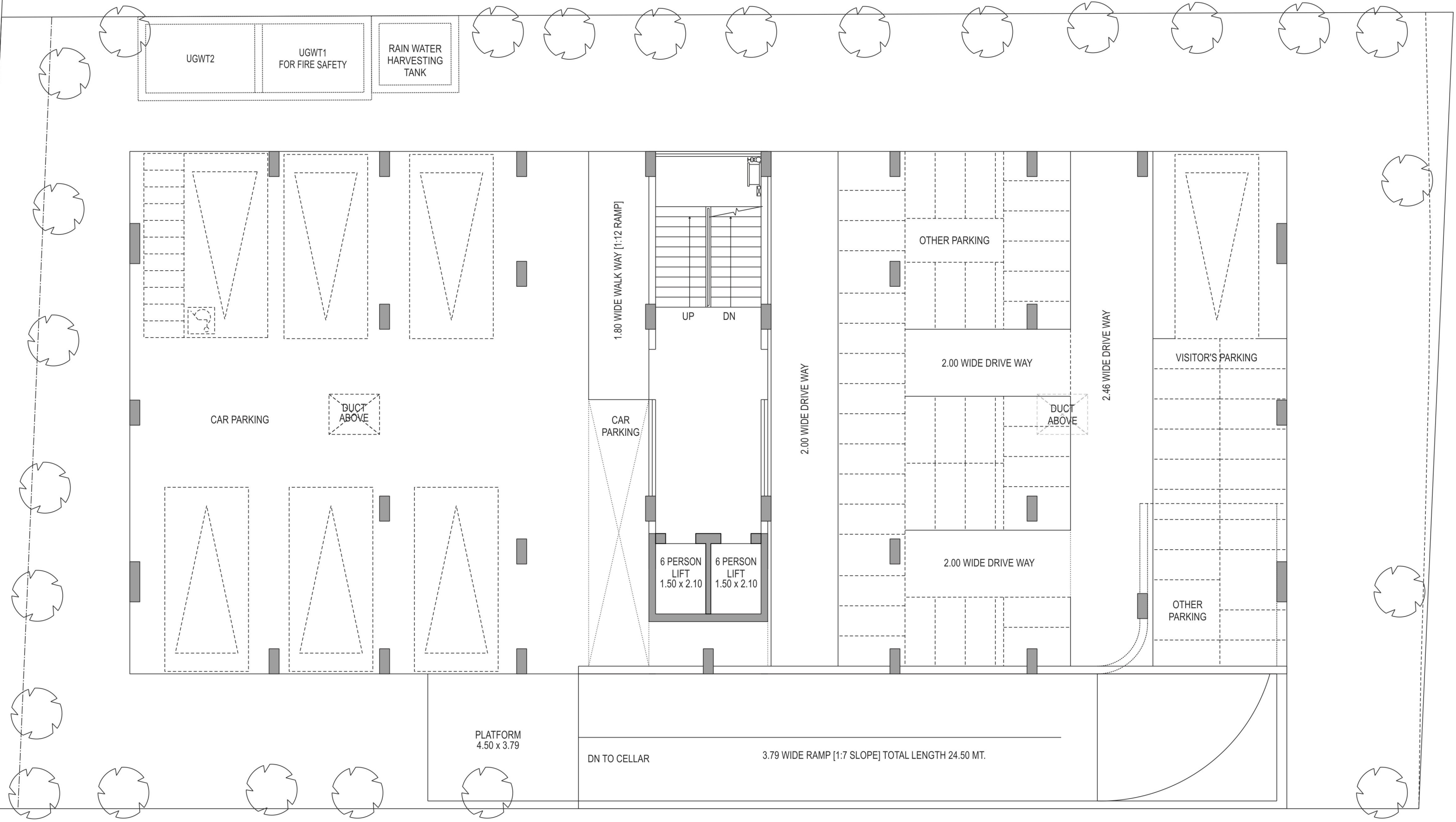
सनातन सारथी

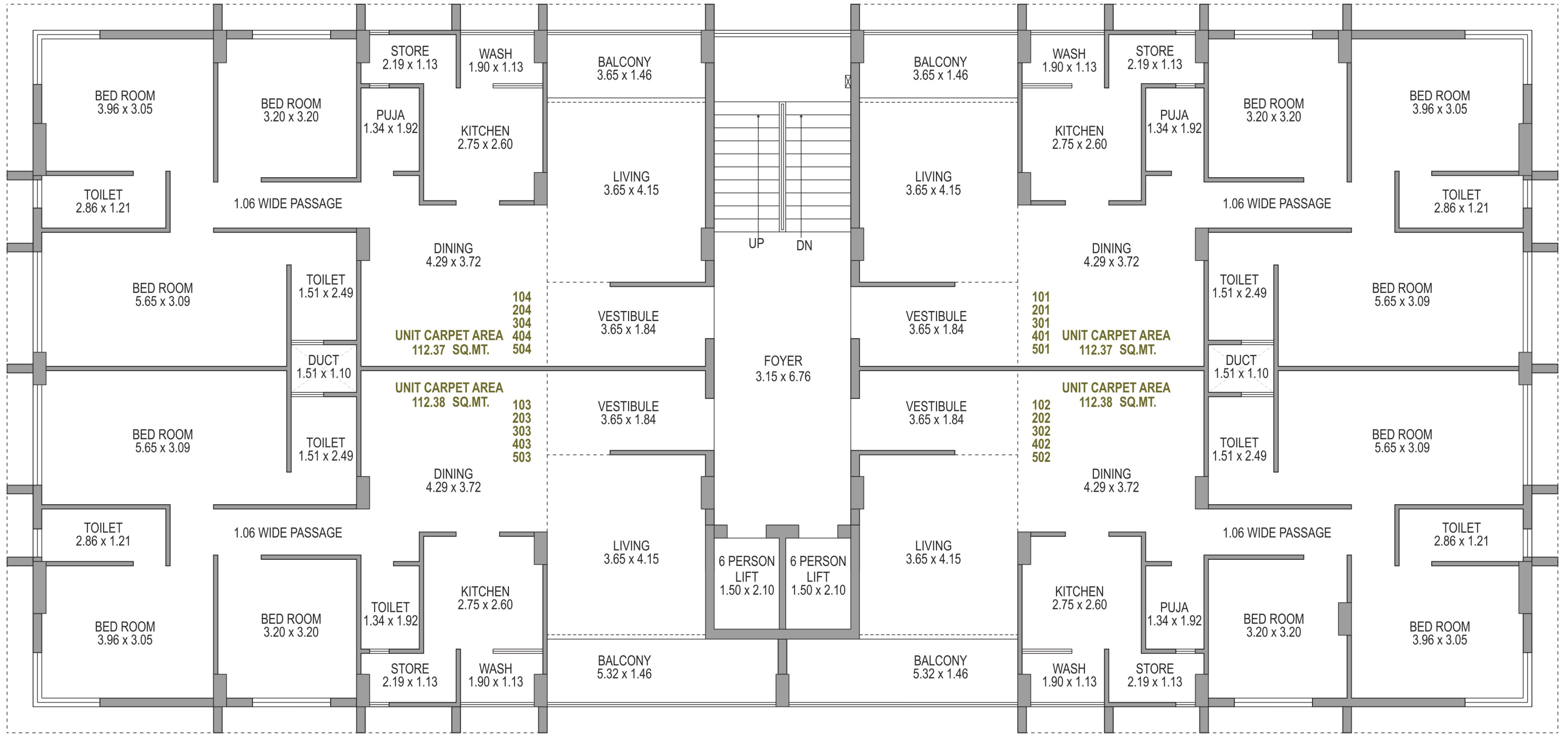




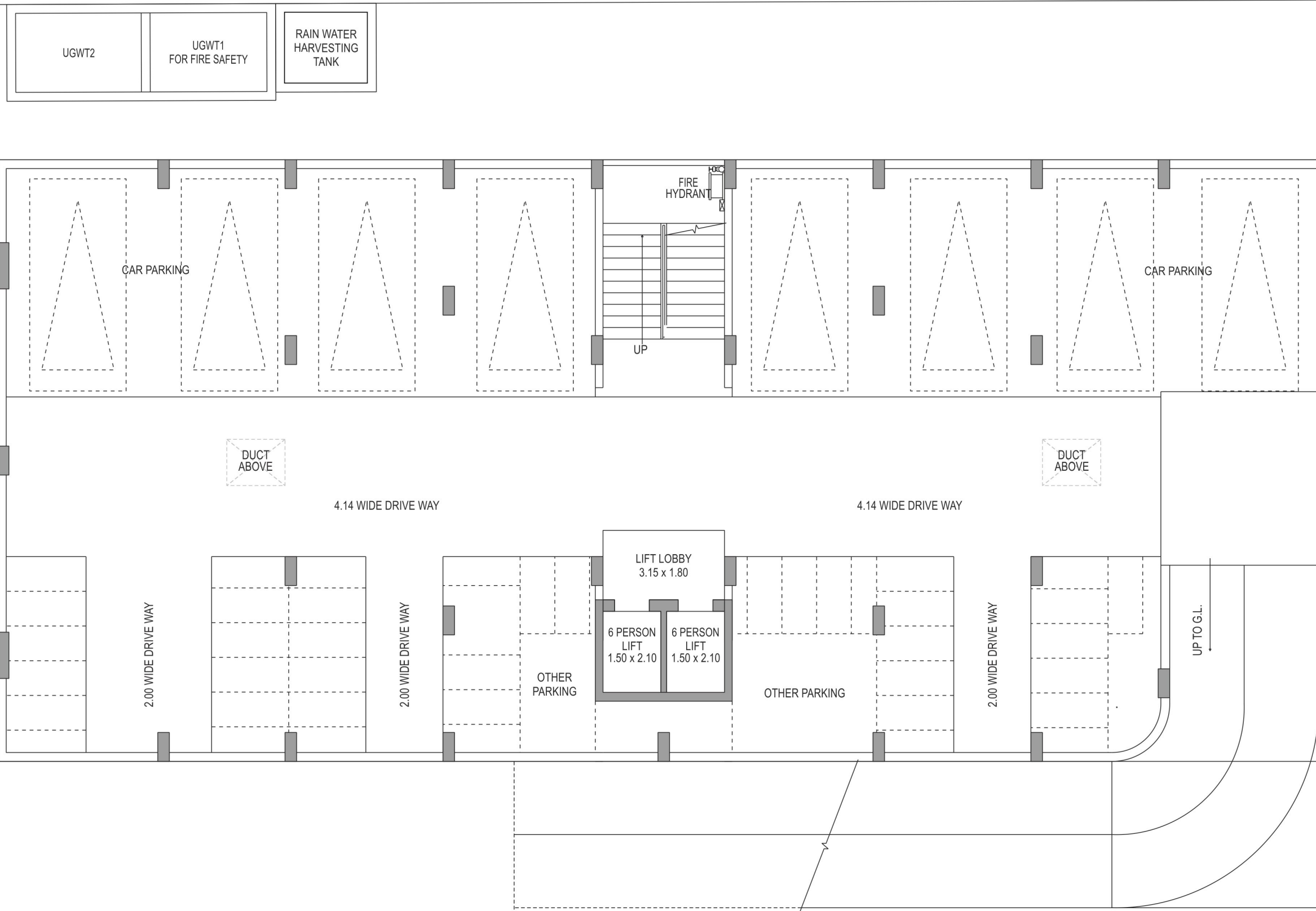
सनातन
सारथी

9.15 MT. [30'] WIDE T.P.S. ROAD





9.15 MT. [30'] WIDE T.P.S. ROAD



AMENITIES

- 24 x 7 Security
- 24 x 7 CCTV Surveillance
- Children's Play Area
- 2 level Ground & Basement Parking
- Allotted Car parking
- 2 Automatic Elevators of Kone / Schindler
- Planters all around the building
- Intercom Facility

- Solar Panel
- Provision of Air-Conditioning at designated place with concealed copper piping pre-installed with drain pipes
- Elegant Main Entrance Gate
- Fire Hydrant System on all floors
- PNG Gas Line
- Pressure Water System
- Paved roads with trimix concrete

SPECIFICATIONS

RCC STRUCTURE

- Structure designed with Earthquake resistant frame

LIVING ROOM, DINING ROOM, BEDROOMS

- Vitrified Tiles

KITCHEN

- Granite platform with S.S. Sink
- Designer glazed Tiles upto lintel level
- Premium quality C.P. Fittings
- Electric & Plumbing Points for water Purifier

STORE & UTILITY AREA

- Designer Tiles flooring
- Provision for Washing Machine & Dryer

BALCONY

- Designer Tiles / Stone Flooring / Rustic Tiles with Landscape

TOILETS

- Designer Tiles flooring & wall cladding
- Jaquar / Kohler / Duravit / Plumber or equivalent quality Sanitary & CP fittings
- Granite / Composite Marble basin counters
- Concealed Plumbing
- Wooden frames for bathroom

WINDOWS

- Jindal / Domal or equivalent quality Anodised Aluminium Glazed Sliding windows
- Natural Stone frames on window sills

DOORS

- Main Entrance Door with Wooden Door Frame
- Stainless Steel Handles & Locks
- Standard quality aluminium anodised glazed windows
- Natural Stone frames on Window sills

ELECTRICAL

- 3-Phase wiring with MCB & ELCB in distribution panel
- Provision for DTH, TV & AC points in each room
- ISI standard concealed electrification & Modular Switches in each flat
- Ample electric points in other rooms & common areas

PLUMBING

- Borewell for 24X7 Water Supply
- Underground and Overhead Water Tanks
- CPVC water supply pipes
- UPVC pipes for soil, waste & drainage systems
- Percolation Well

INTERNAL & EXTERNAL FINISHES

- Internal Walls & Ceilings - Mala Plaster & Birla Putty
- External Walls - Double Coat Textured Plaster / Brick Cladding with Weather-shield Acrylic Emulsion Paint

TERRACE

- Decorative China Mosaic flooring with Turf Grass
- Two coats of Water Proofing & Chemical treatment for Heat Reflection & Thermal Insulation



LOCATION
(NOT TO SCALE)



TERMS & CONDITIONS

All the architectural and interior images in the brochure, are merely simulated interpretations using computer graphics to enhance the customer understanding and are not factual images. • The colour and general appearance of the flooring and wall tiles, sanitary ware & fittings, walls, ceilings, windows, doors, internal roads, trees, shrubbery etc. shown in the simulated computer graphics images are taken from the object libraries for the purpose of presentation and the prospective buyers of the concerned property are advised to refer to the construction specifications mentioned in the brochure. Additional amenities and/or utilities not mentioned or shown in the brochure but may be required as per the law, should be deemed to be forming part of the project by the purchaser. • All Furniture including wardrobes, other sofa furnishings inter-alia curtains, mattresses, bed linen, upholstery etc., lights and other electrical fixtures and appliances like air conditioners, refrigerators, TV's, telephones, laptops etc., any of the equipment, household accessories inter-alia crockery and cutlery, rugs, carpets, decorative pieces and wall hangings, wall papers, utensils etc., apparels and all other consumable and movable items shown in the simulated images do not form part of the sale of any property by the developer. • All dimensions presented herein are approximate and the measurements are made from unfurnished surfaces. • All rights reserved with the developers to make any changes in the project and all the members shall abide by such changes. • GST, AMC/ AUDA charges along-with Torrent electrical charges including cable and Sub-station cost shall be borne by purchaser. • Stamp duty, registration charges, or any other charges and taxes as & when levied by government or any of its body shall be borne by purchaser/buyer/legal possession holder. • GST at applicable rate is payable on the due amount and is non refundable. • This brochure is for restricted private circulation only and is for an easy display of the project. It should not to be considered as a legal document with obligations for specific performance. It is meant for the purpose of conceptual presentation only. • Subject to Ahmedabad Jurisdiction only.

Developer

**SAMARPAYE REAL ESTATE
VENTURES LLP**

Site Address

21, Sanjivbaug,
Near Sanjeevani Ayurvedic Hospital,
New Sharda Mandir Road, Paldi,
Ahmedabad - 380007.

Contact

+91 90999 22200

Architect &
Landscape designer





Developer

**SAMARPAYE REAL ESTATE
VENTURES LLP**