

RATNA  
MOHAN | 14

3 BHK PREMIUM APARTMENTS

# RATNA MOHAN | 14

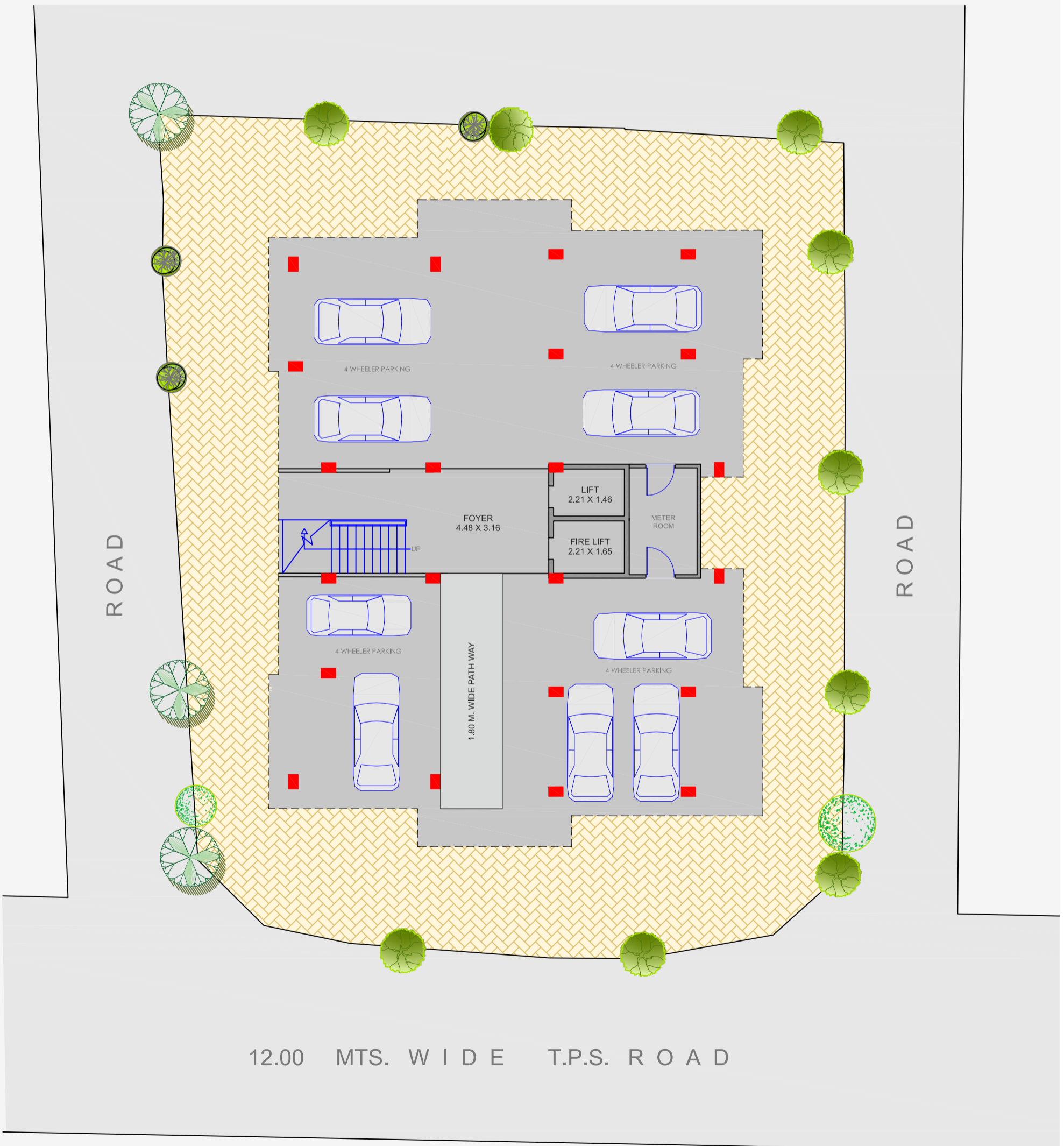


# RATNA MOHAN | 14



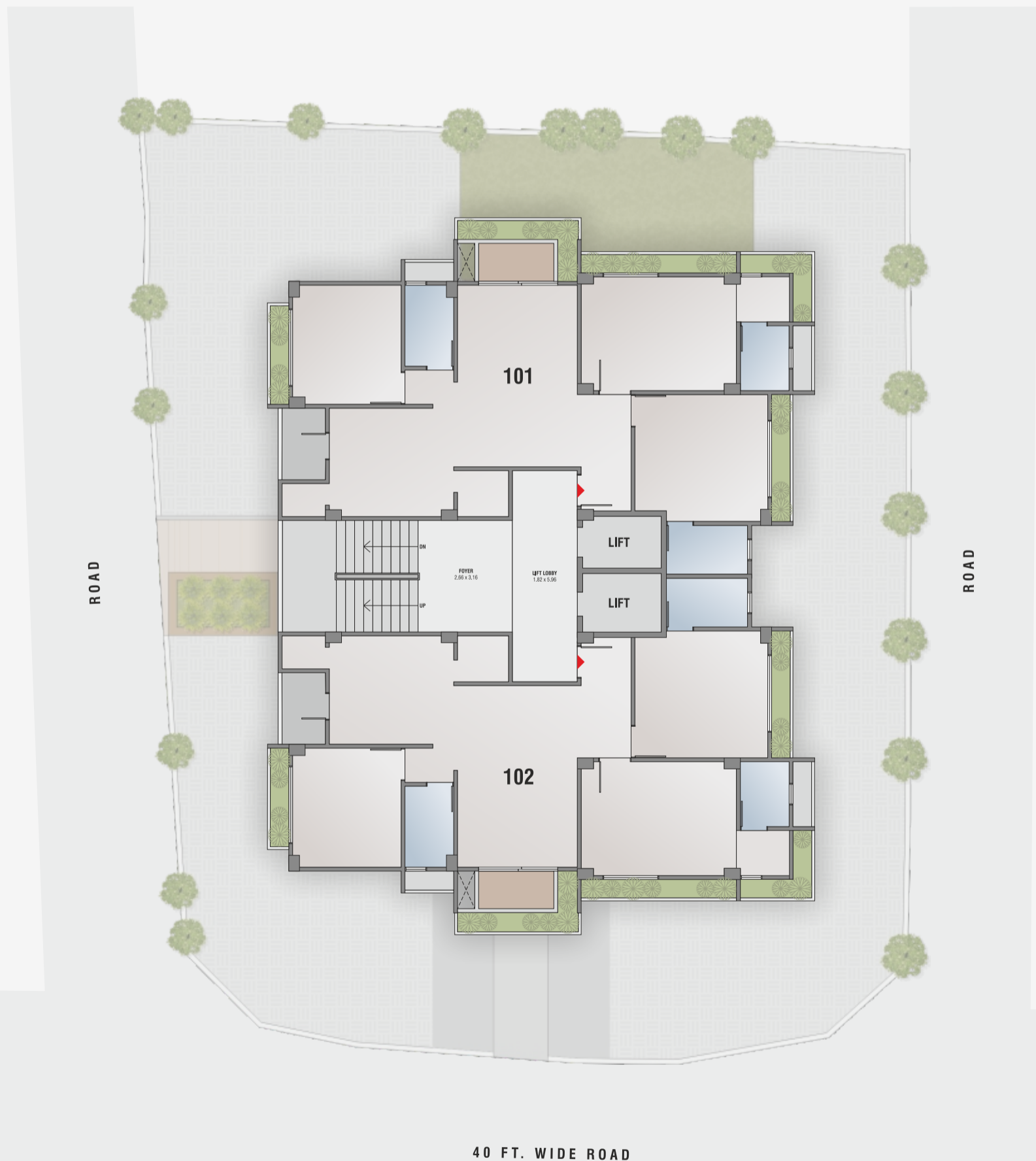


# GROUND FLOOR PLAN





# TYPICAL FLOOR PLAN





# Specifications

## STRUCTURE

Quality controlled RCC frame structure with best material components.

## WALLS

Internal chant mala plaster with double coat putty & External walls with Mala/Sand faced plaster with Acrylic paint.

## FLOORS

Premium quality vitrified tiles in entire apartment.

## DOORS & WINDIES

Laminate finish main door with Brass/S.S. fittings & all other doors are flush door. Powder coated/ Anodized aluminum sliding windows.

## BATHROOM

Premium glazed wall tiles up to lintel level. Good quality CP fittings, Sanitary ware & Accessories. Provision for Gyser.

## KITCHEN

Granite platform with S.S. sink. Designer tiles up to lintel level. Stone rack in store. Provision of Water purifier, Gas line, Microwave oven, Refrigerator points.

## PLUMBING

Corrosion free and leak proof CPVC / UPVC pipes and fittings. PVC pipes for drainage & rain water.

## WATER PROOFING

China mosaic/Ceramic tiles in terrace for water proofing & heat resistance.

## ELECTRIFICATION

3 Phase concealed copper wiring with modular fittings & ELCB / MCB. Adequate points in all rooms.

DEVELOPER

**SAIRUDRAM  
DEVCON**

ARCHITECT



STRUCTURE ENGINEER

**612 STRUCTURAL  
CONSULTANT**  
MITESH SHAH

SITE : FP 617, TP 28, SUB PLOT NO.8 , THE KESHAVNAGAR CO. OP. HOUSING SOCIETY, KESHAVNAGAR, SHUBHASBRIDGE CIRCLE, AHMEDABAD

RERA NUMBER : PR / GJ / AHMEDABAD / .....

[www.gujrera.gujarat.gov.in](http://www.gujrera.gujarat.gov.in)