



Project By: **Om Buildspace**

THE BLISS OF HARMONY



Site: "Atharva Elanza", Near Sant vihar-3, K Raheja Road, Koba, Gandhinagar. Gujarat.



Developers
Om Buildspace
+91 84011 72054
+91 92272 18450



Architect
Arcline Architects
Ahmedabad



Structure Design
Arise Structure Design
Ahmedabad

LaSpazio

Landscape
LaSpazio
Ahmedabad



MEPF
PHE
Ahmedabad



Sales
+91 84011 72054
Email
ombuildspace@gmail.com



RERA No.



EXCLUSIVE 3 BHK

Notes: • Stamp Duty, Registration Charges, Legal Documentation Charges, GST, Advance Maintenance, Fix Maintenance Charges and Electrical Co. Charges including cable and sub-station cost shall be borne by the purchaser. • Any Additional charges, taxes, cess or duties levied by the Government / Local authorities prior, during or after the completion of the scheme will be borne by the purchaser. • This brochure is intended only to convey the essential design and technical features of the scheme • All elements, objects, treatments, materials, equipment and colour schemes shown are artist's impression. Actuals may be different as per architect's design.



The harmony of bliss is the source of life itself. You see it in the union of nature and soul, in a baby's sweet smile, in a mother's loving eyes and in a father's caring hands. You experience the bliss of harmony, when your mind, body and soul are in-sync with your home. Welcome to ATHARVA ELANZA by Om Buildspace. A home where the bliss of harmony resides. More than that, it is the source of spiritual bliss with a happy community. The project offers limited inventory of 104 apartments in 13 storey tower ensuring more privacy and less density.

13 STOREYS

02 SUPER TOWER

03 BHK EXCLUSIVE

THE Sterling ABODE



TRUST



CARE



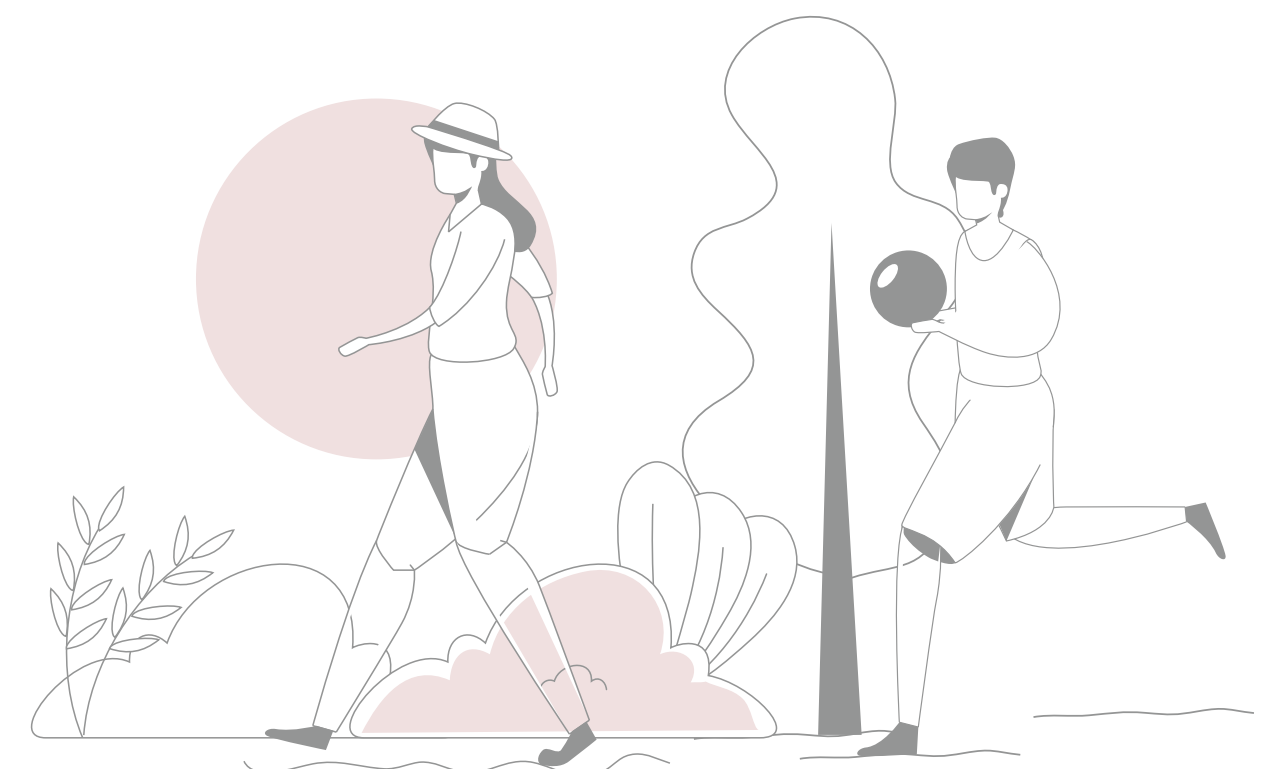
LEGACY

THE BLISS OF A COSY HOME



THE *Bliss*
OF A COZY HOME

Where old bounds are strengthened and new ones are made. The lavish lobby with its welcoming and common spaces are designed to enhance your lifestyle with every handpicked tile and windows.





A HOME THAT EXUDES HARMONY





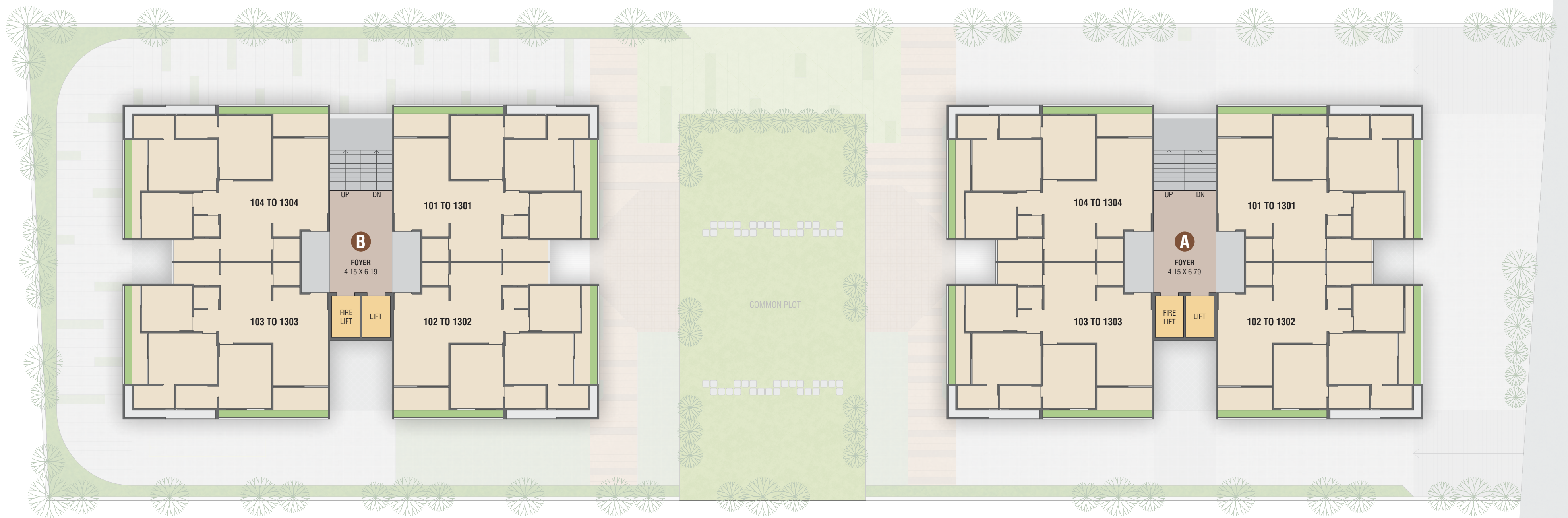
30.00 MT. T.P. ROAD



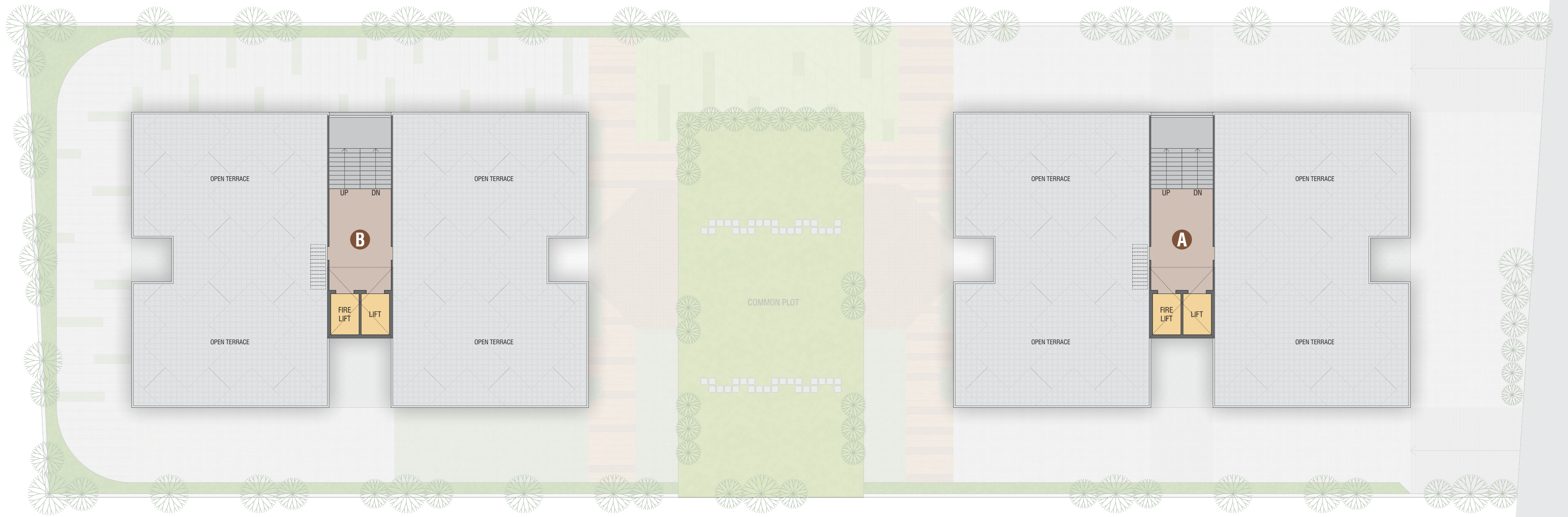
TYPICAL FLOOR



atharva
ELANZA



30.00 MT. T.P. ROAD



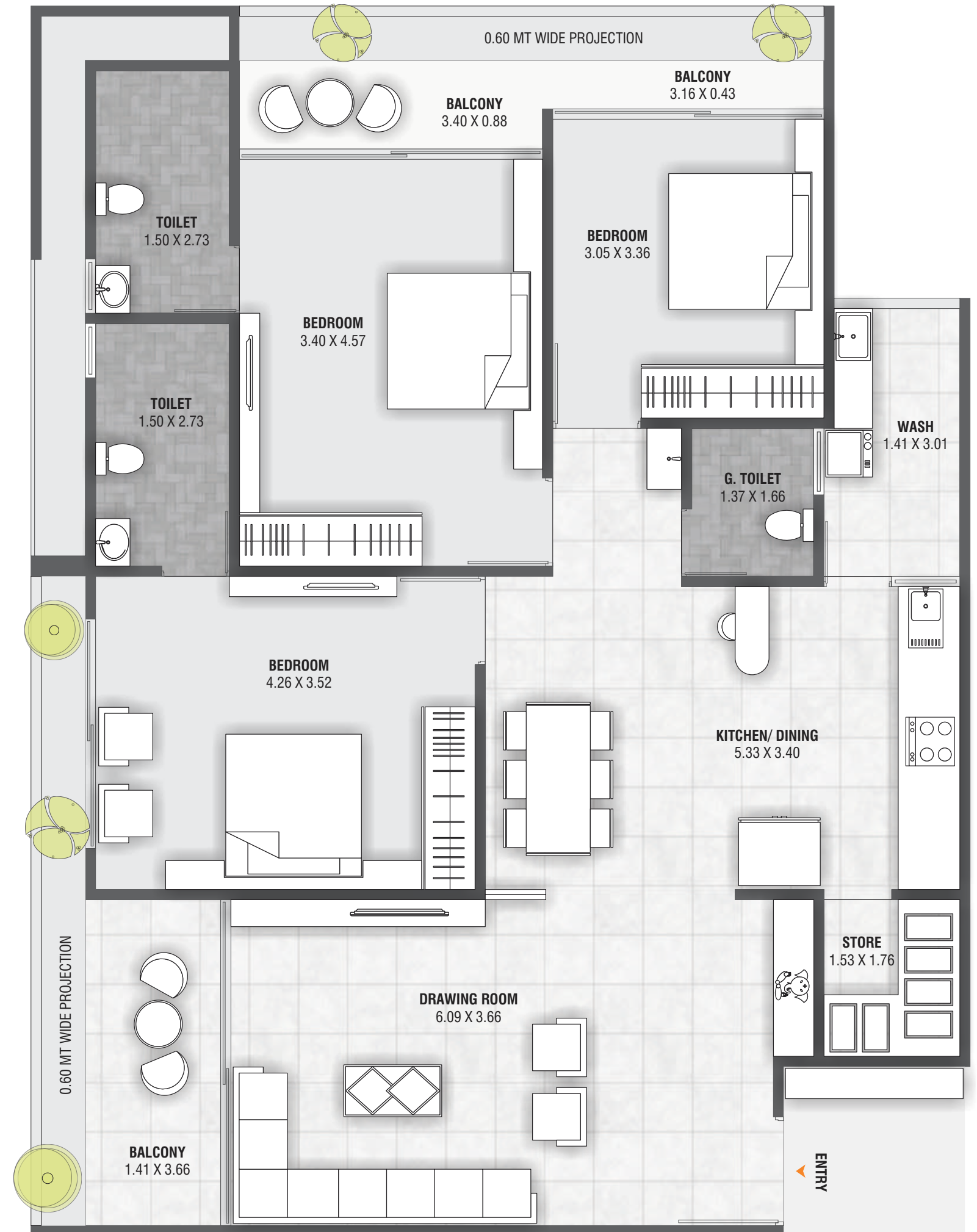
30.00 MT. T.P. ROAD



GROUND FLOOR

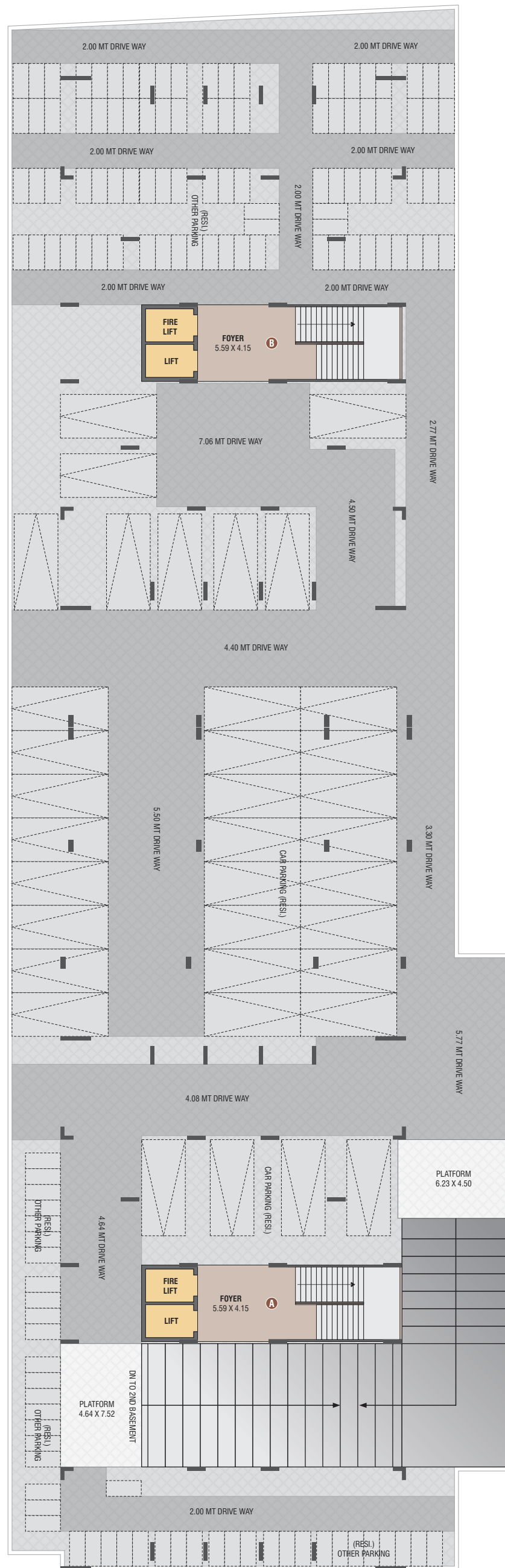


UNIT PLAN

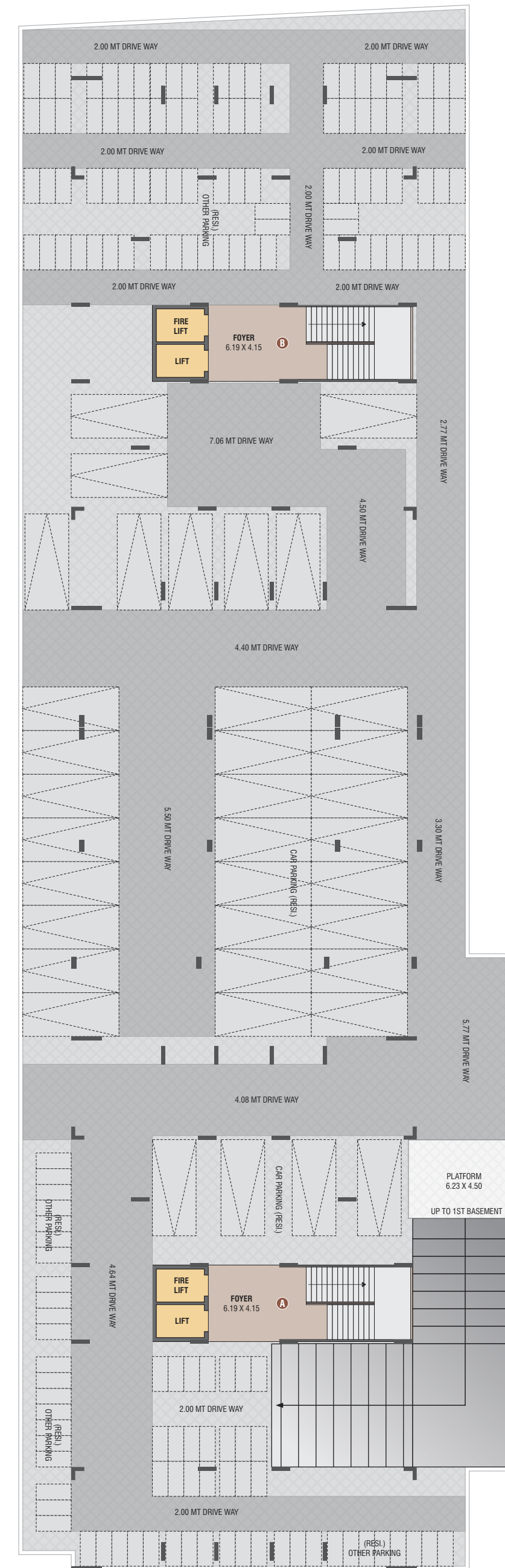




BASEMENT 1 PLAN



BASEMENT 2 PLAN



FOR THE CONNOISSEURS OF LIFE



YOUR *Picturesque* LIFESTYLE



EXCLUSIVE Specifications

- **STRUCTURE**
 - Earthquake resistance R.C.C. frame structure.
- **WALL FINISH**
 - All internal walls will be finished with putty over mala plaster.
 - All external wall will be finished with double coat male Plaster with texture finish.
- **PLUMBING**
 - Concealed plumbing with premium quality pipes and fittings.
 - For continuous water supply, a common borewell.
- **FLOOR FINISH**
 - Premium quality designer vitrified tiles in drawing room dining area with kitchen and all bedroom area.
- **ELECTRIFICATION**
 - Concealed copper flexible wiring with adequate number of electrical points & branded modular switches.
 - TV & AC points in Drawing room & Bedrooms.
- **KITCHEN**
 - Ready to use granite finished platform with SS sink, Designer glazed tiles with dado up to beam level.
 - Plumbing and electrical provisions for water purifier & washing Machine, Stones self in store room.
- **DOORS & WINDOWS**
 - Attractive entrance doors with standard safety lock.
 - All other doors are flush doors.
 - Fully/Galzed aluminum Windows with stone revile.
- **TOILETS**
 - Fully Glazed designer Tiles on Bathroom walls upto the lintel level and colour coordinated sanitary ware.
- **TERRACE**
 - Open terrace finished with suitable water proofing with China mosaic flooring for heat reflection.
- **RENEWABLE ENERGY**
 - Solar system as per rules.
- **FIRE**
 - Fire safety system as Government norms.
- **ELEVATORS**
 - Automatic elevators as per norms.

KEY PLAN



LOCATION

Advantage CONNECTIVITY & SOCIAL INFRASTRUCTURE



EDUCATION

- Delhi Public School
- PDU University
- IIT Gandhinagar
- NID



LANDMARKS

- GIFT City
- Mahatma Mandir
- Narendra Modi Stadium
- Info City
- Indroda Park



WELLNESS

- Apollo Hospitals
- SMS Multi-speciality Hospital
- SMVS Hospital
- Divine Multi-speciality Hospitals



BUSINESS

- Tata Consultancy Services
- Agora Mall
- Gujarat Assembly
- Shri Kamalam



SPIRITUAL

- Akshardham Temple
- Vaishnodevi Temple



CONNECTIVITY

- Metro Station
- International Airport
- Railway Station

A PRESTIGIOUS ADDRESS THAT OFFERS THE PERFECT WORK-LIFE BALANCE

Popularly known as K. Raheja Road is a prime location for both commercial and residential development. This fashionable address is nestled between the bustling PDU and the Raysan road. Offering excellent connectivity to the Ahmedabad-Gandhinagar Metro and the International Airport. A lively world, "Atharva Elanza" is a hub of culture, lifestyle, fashion and leisure.