



ISHA  
aagman

# आगमन

आगमन

**Aagman : Advent**

A small word. A big feeling.



Think milestone moments that define you.  
That change your life forever.  
For the better.



That mark the advent of something new.  
Something unforgettable. It's time for you to welcome  
the advent of your dream life.





# aagman

The meeting point of all things beautiful.  
The advent of a wonderful life.



संगति

# सङ्गति

## Sangati : Togetherness

Foster new bonds, safeguard old ones.  
Make every moment a collection of  
memories you cherish forever after.





Rooftop Cabana



Lounge in leisure and in style |







Community Hall



Celebrate milestones big and small





Gymnasium



Sweat it out and stay in shape

Rebo

Z R 11





शान्ति

शान्ति

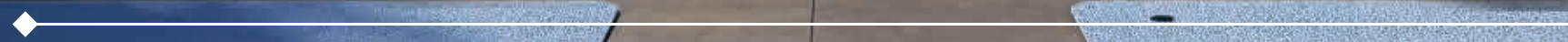
## Shaanti : Tranquility

Surround yourself by lush greens, letting serenity take over the moment you step in.





Yoga Deck



| Savour a meditative moment of peace |



Artist's impressions purely for representational purposes.



Sample Flat

आनंद

आनंद

**Aananda : Happiness**

Experience the euphoria of living  
in a space which offers more  
than you desire.







Sample Bedroom

Rest and relax just the way you love



# adgman

A boutique G+7 gated community,  
home to 2 BHK to 3.5 BHK flats  
with a host of amenities, set in the desirable  
location of Sinthi More.





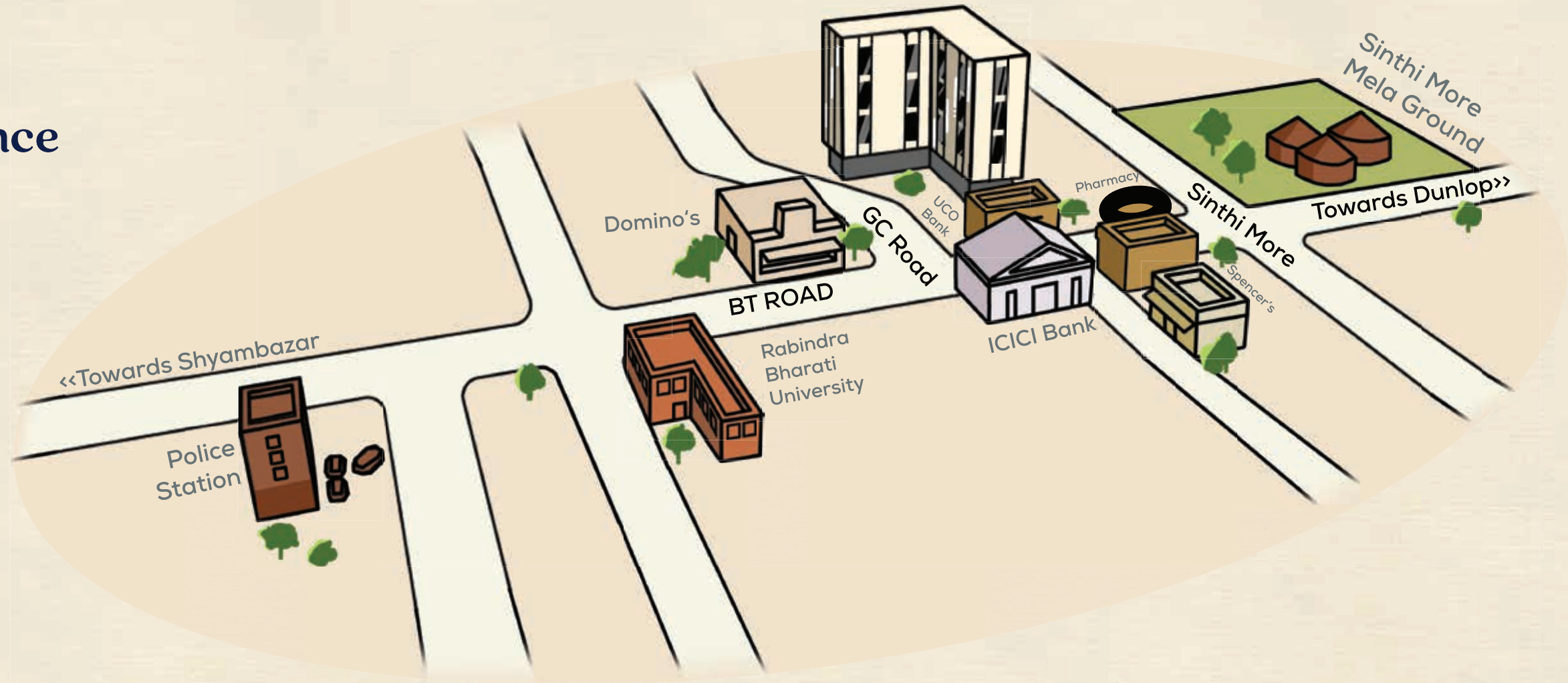
# सुविधा

सुविधा

aagman

## Suvidha : Convenience

Let a new story of unmatched convenience unfold.



### SCHOOL

Sinthi RBT Vidyapith.....	600 m
Baranagar Narendranath Vidyamandir.....	600 m
Dream Land School.....	750 m
Sinthi Ramkrishna Sangha Vidyamandir....	1.7 km
Eurokids Preschool.....	2.8 km
Adamas International School.....	4.3 km

### HOSPITAL

Aastha Polyclinic.....	750 m
Aastha Medical Services.....	750 m
North Suburban Hospital.....	800 m
Binayak Multispecialty Hospital.....	1.1 km
Paras Healthcare.....	1.4 km

### CONVENIENCES

Punjab National Bank.....	450 m
Axis Bank.....	750 m
Spencer's Neighborhood Store.....	800 m
ICICI Bank Sinthi.....	800 m
Sinthi Police Station.....	1 km
Union Bank of India.....	1.4 km

### EATERIES

Domino's.....	600 m
Chowman.....	1.1 km

### DAILY COMMUTE

South Sinthee Bus Stand.....	210 m
Dum Dum Metro Station.....	2.4 km
NSC Bose International Airport.....	8.5 km





## Sukshma : Meticulous

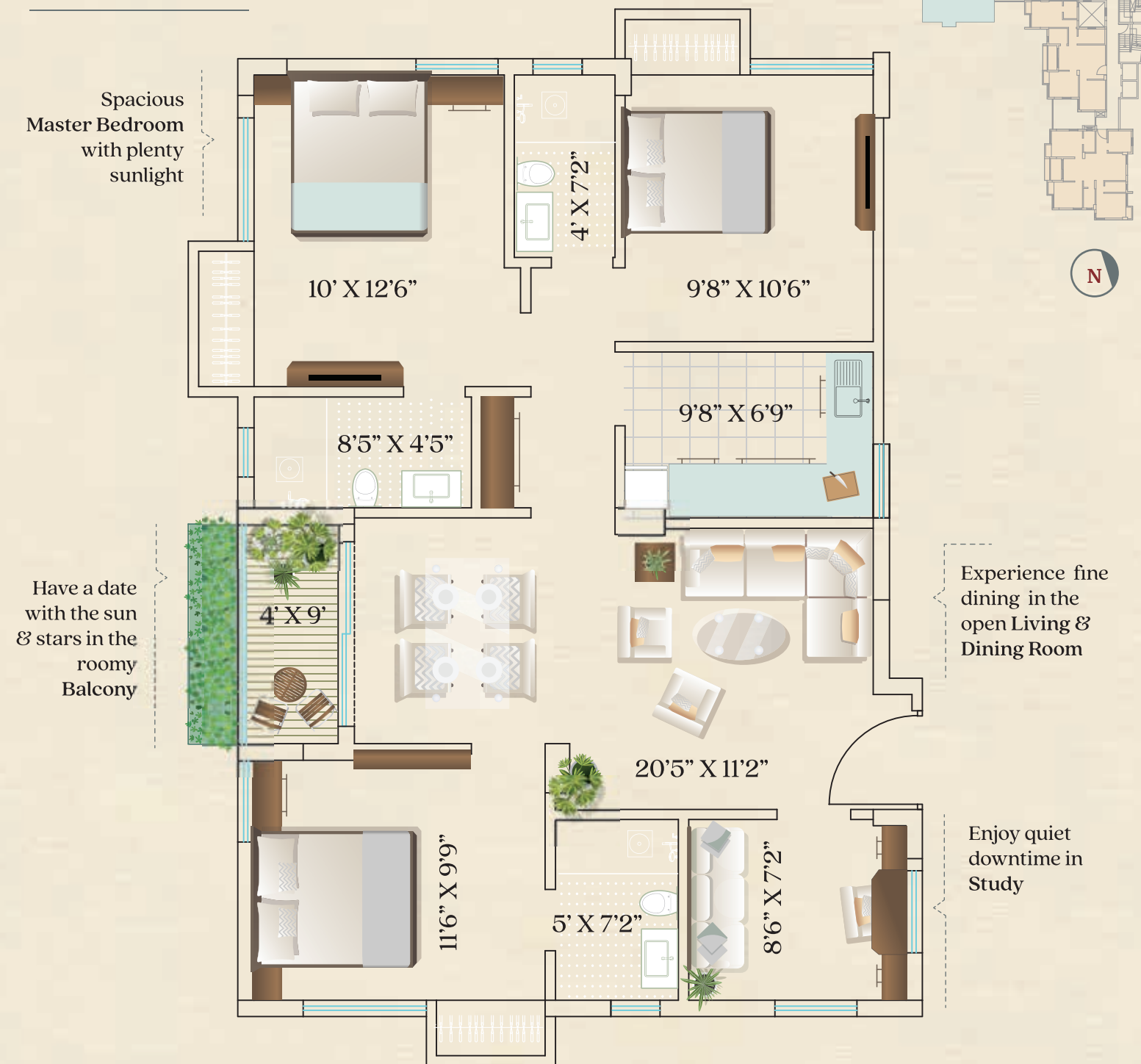
Live in a home where every corner presents a new kind of comfort.



### FLAT A

3.5 BHK

TYPICAL FLOOR PLAN 2<sup>nd</sup> to 7<sup>th</sup>



Unit	Type	CARPET AREA	BALCONY AREA	BUILT UP AREA	(in sq.ft.)
A	3.5 BHK	924	36	1,054	



# FLAT B

TYPICAL FLOOR PLAN 2<sup>nd</sup> to 5<sup>th</sup>, 7<sup>th</sup>

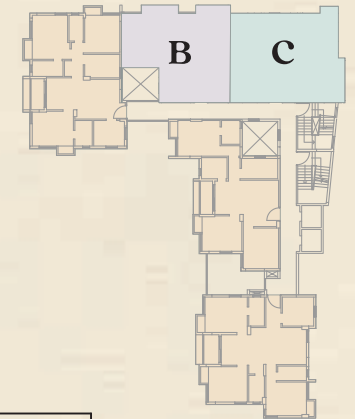
2 BHK



# FLAT C

TYPICAL FLOOR PLAN 2<sup>nd</sup> to 7<sup>th</sup>

2.5 BHK



Unit	Type	CARPET AREA	BALCONY AREA	BUILT UP AREA	(in sq.ft.)
B	2 BHK	609	36	709	
C	2.5 BHK	691	38	799	

Built up area includes carpet area of the unit, cupboard, balcony/service balcony, and the wall area covering the unit. All dimensions are indicative and clear "structural dimensions". Actual dimensions may vary due to the thickness of the plaster, skirting, ledge wall, etc.



# FLAT D

TYPICAL FLOOR PLAN 2<sup>nd</sup> to 7<sup>th</sup>

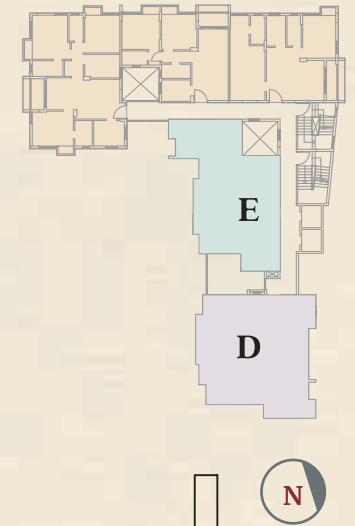
3 BHK



# FLAT E

TYPICAL FLOOR PLAN 2<sup>nd</sup> to 7<sup>th</sup>

3 BHK



Unit	Type	CARPET AREA	BALCONY AREA	BUILT UP AREA	(in sq.ft.)
D	3 BHK	889	39	1,032	
E	3 BHK	782	36	918	

Built up area includes carpet area of the unit, cupboard, balcony/service balcony, and the wall area covering the unit. All dimensions are indicative and clear "structural dimensions". Actual dimensions may vary due to the thickness of the plaster, skirting, ledge wall, etc.



# পরিপূর্ণতা

## Paripurnata : Perfection

To us, even the smallest details matter because they matter to you.



### FOUNDATION & STRUCTURE

RCC framed structure resting on a RCC pile foundation

### WALLS

Autoclave Aerated Concrete (AAC) blocks/Fly ash bricks

### ULTIMATE ROOF

Heat reflective tiles with appropriate waterproofing treatment

### WALL FINISHES

Apartment Units

Living, Dining, Bedrooms - Wall putty

Kitchen, Bathrooms - Vitrified tiles/Wall putty

Toilets - Vitrified tiles upto door height/Wall putty

### COMMON AREAS

Exterior - Textured and/or weather-shield paint finish

Interior - Paint finish

Lobby - Paint finish with vitrified tiles

Ceiling - Paint finish

### FLOORING

Rooms/Living/Dining/Kitchen - Premium Vitrified tiles

Bathroom - Anti-skid tiles

Staircases - Monolithic tiles/Natural stone

Lift Lobby - Vitrified tiles

Driveway - Natural stone or Paver block finish

### SPECIFICATIONS & FITTINGS

• Quartz/Granite kitchen counter top fitted with Stainless Steel sink

• Toilet sanitaryware & CP fittings of Grohe/Kohler/Jaguar or equivalent

### DOORS & WINDOWS

• BWR flush doors

• Powder coated aluminium sliding/casement windows

### ELECTRICALS

• Concealed multi-strand wiring in PVC conduits with modular switches

• AC points in living/dining and all rooms

• Geyser points in all bathrooms

• Provision for Cable TV/Broadband and Telephone

### SAFETY & SECURITY SYSTEMS

• Round-the-clock manned security

• CCTV and Intercom systems

• Video door phone facility\*

• Fire Detection and Suppression systems

### ELEVATOR

2 Elevators of Kone/Schindler or equivalent

### OTHER FEATURES

• Aesthetically designed roof-top lounge

• Peripheral landscaping around the driveways

• Waterproofing in all Toilets and Ultimate Roof

• DG Power Back-Up\*

\* at additional cost





Artist's impressions purely for representational purposes.



# Building a wonderful life for you

For four decades, we have been putting our heart and soul into each project, combining our years of expertise and knowhow to build homes you can spend infinity in.

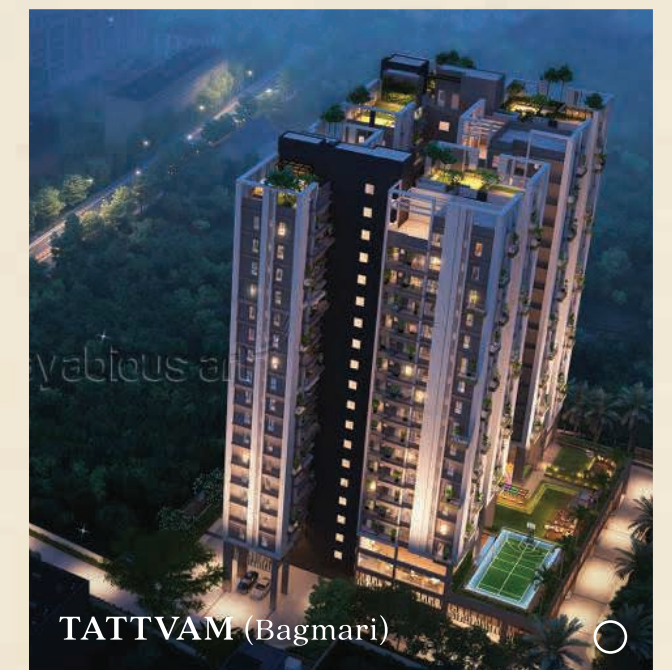
Each of our homes exemplify the spirit of happiness, enveloping you in the joys of homely bliss so you look forward to coming back home each day.

Get on the path of a wonderful life

— [www.ishagroup.com](http://www.ishagroup.com)



Some of our recent projects



- Ongoing Projects
- Completed Projects



To book your dream home,  
send us an e-mail at [marketing@ishagroup.com](mailto:marketing@ishagroup.com)

or simply call us on  
**+91 90735 40000**

[www.ishagroup.com](http://www.ishagroup.com)

**SITE ADDRESS:**

23 Gopal Chatterjee Road  
Kolkata 700002

**RERA Registration No:**

**WBRERA/P/KOL/2023/000177**

Experience the Aagman life

Scan the QR code below



**AAGMAN**

**DISCLAIMER** Please note this brochure is purely conceptual, not a legal document, and the images within are for the purpose of representation only. The company reserves the right to add, delete or alter any details and/or specifications mentioned herein.

Designed by [thealtspace.in](http://thealtspace.in)