

# મેપલ બંગ્લોઝ 2

4 BHK લક્ઝરીયસ બંગ્લોઝ



# મેપલ ગંગલોઝ 2

4 BHK લક્ઝરીયસ ગંગલોઝ





# મેપલ બંગ્લોઝ 2

4 BHK લક્ઝરીયસ બંગ્લોઝ





Entrance Gate with 24hrs. Security



CCTV Camera



Landscaped Garden



Society Approved Amenities



Sit-out Areas



Parking



24X7 Water Supply



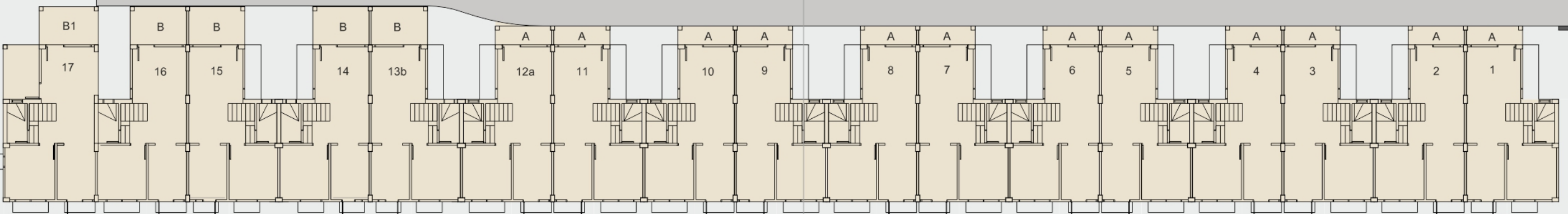
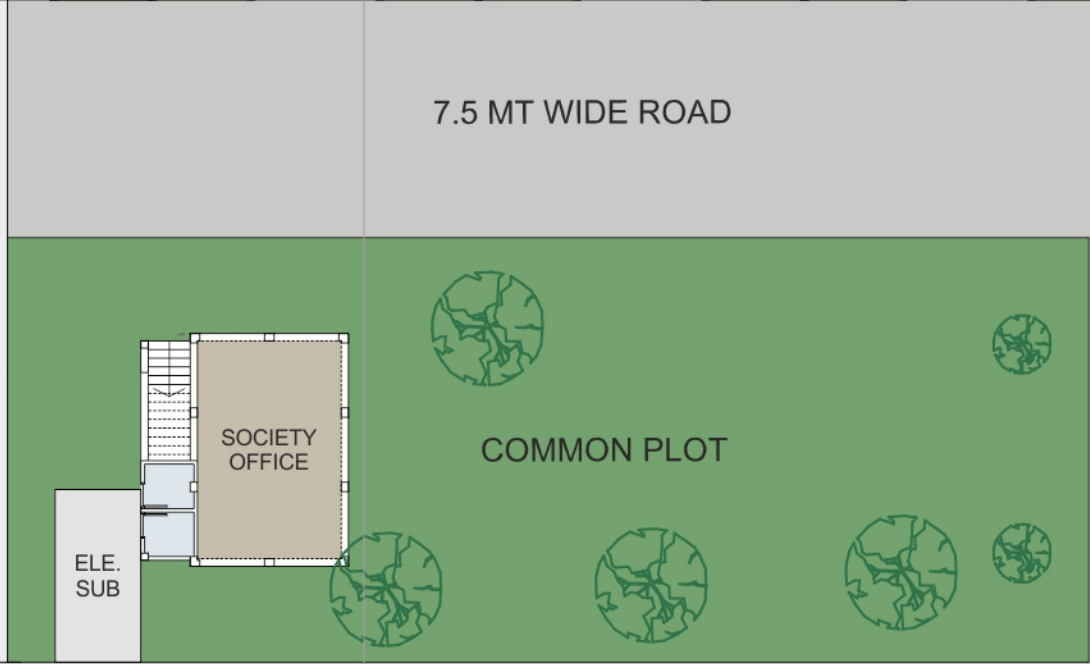
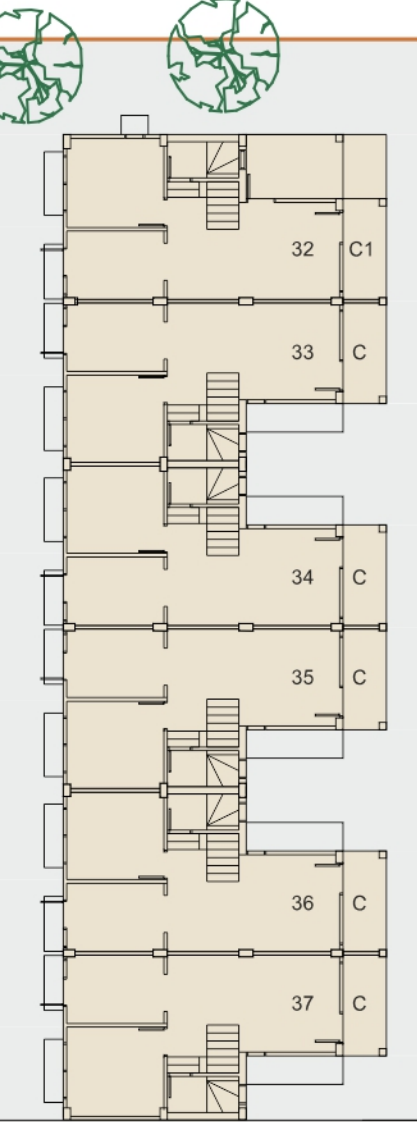
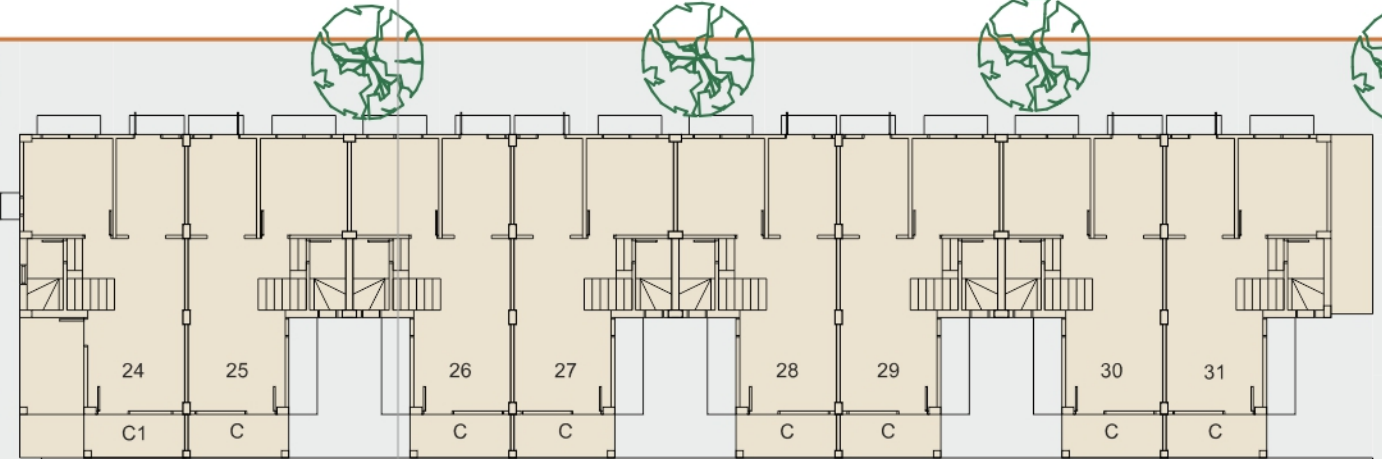
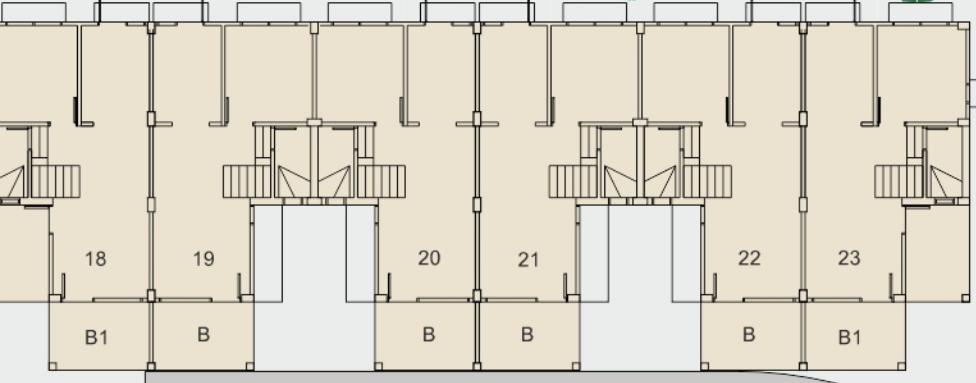
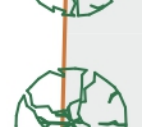
Paved Road with Street Light



Vastu Complied Planning



Termite Treatment



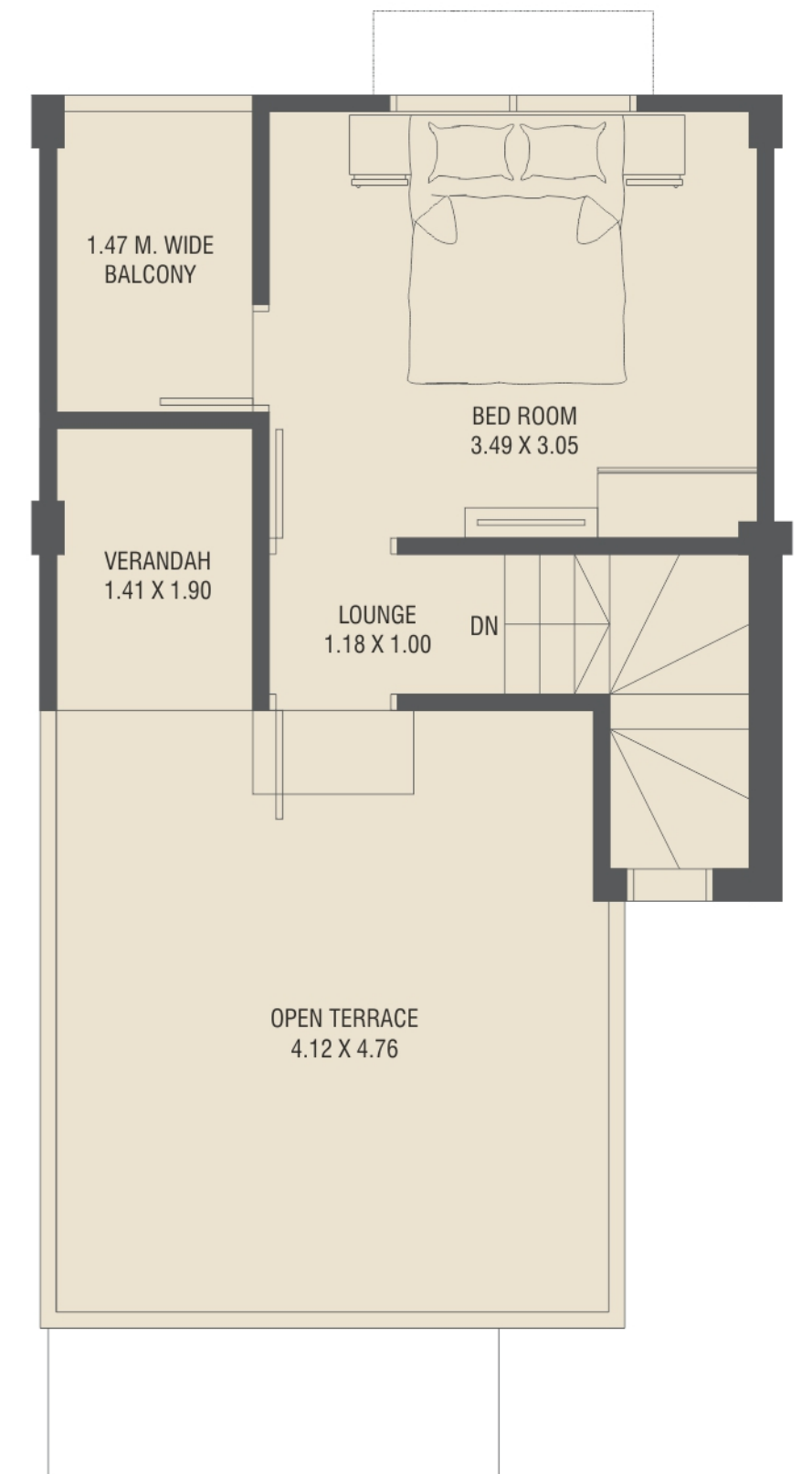
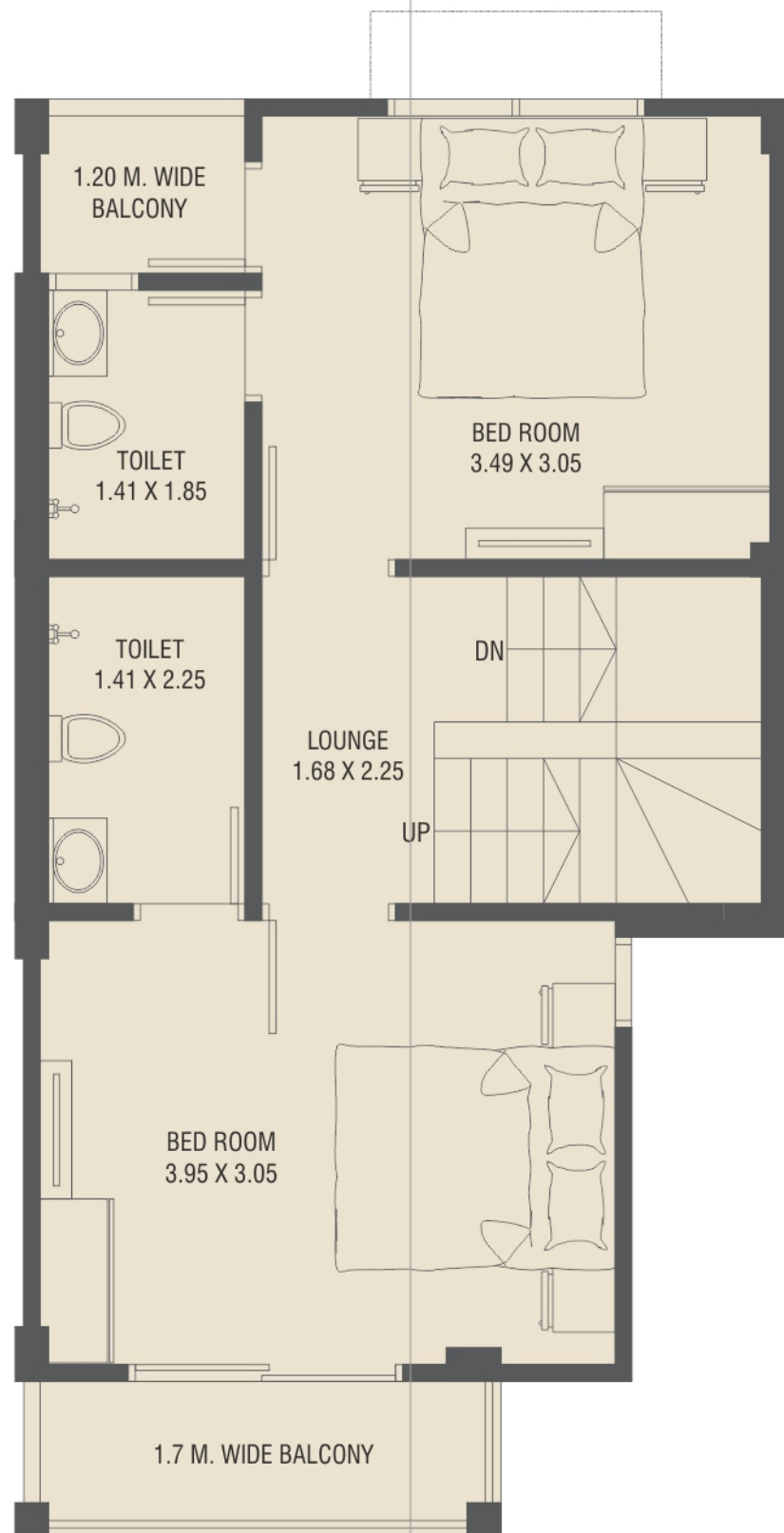
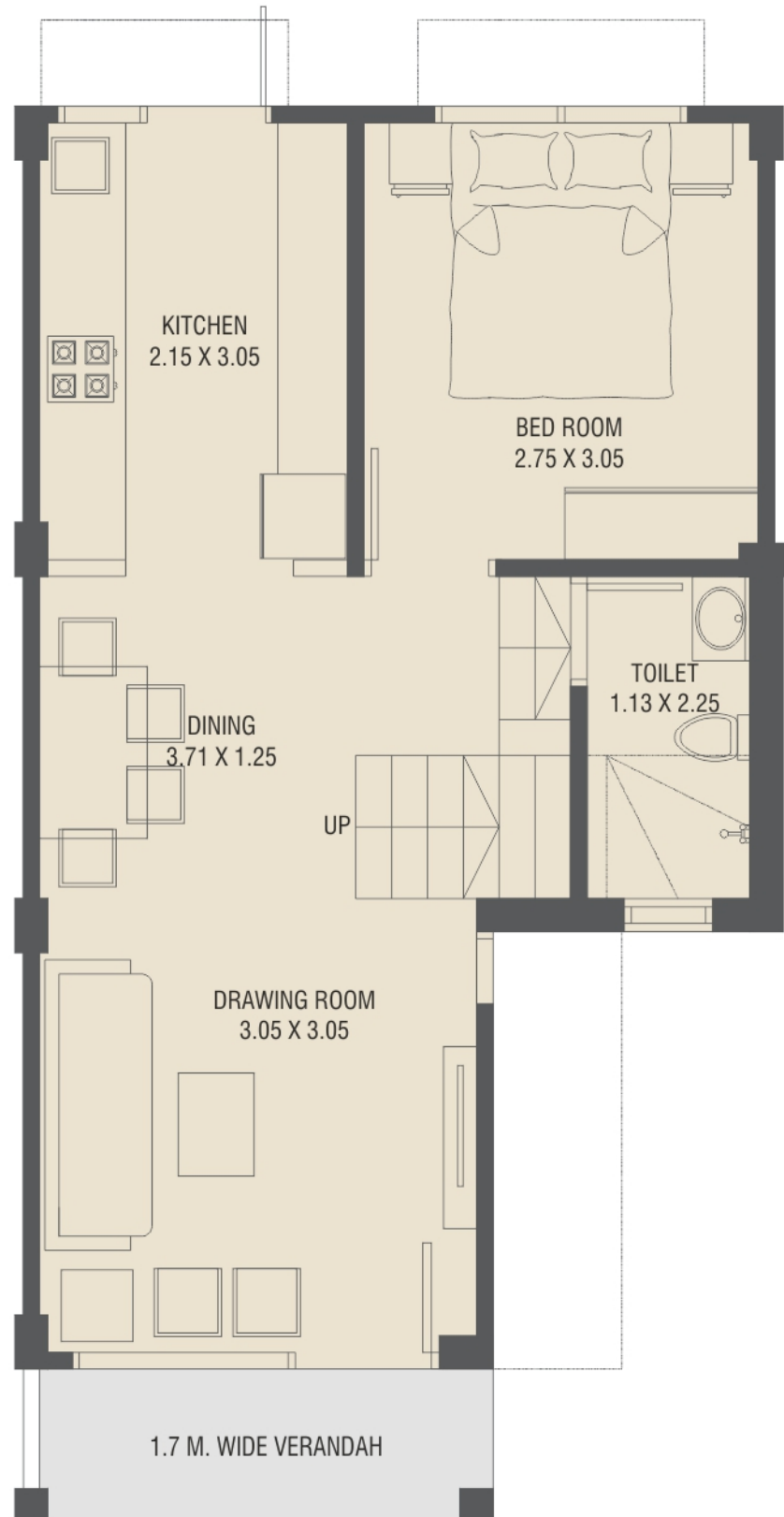
12 M WIDE ROAD

ENTRY



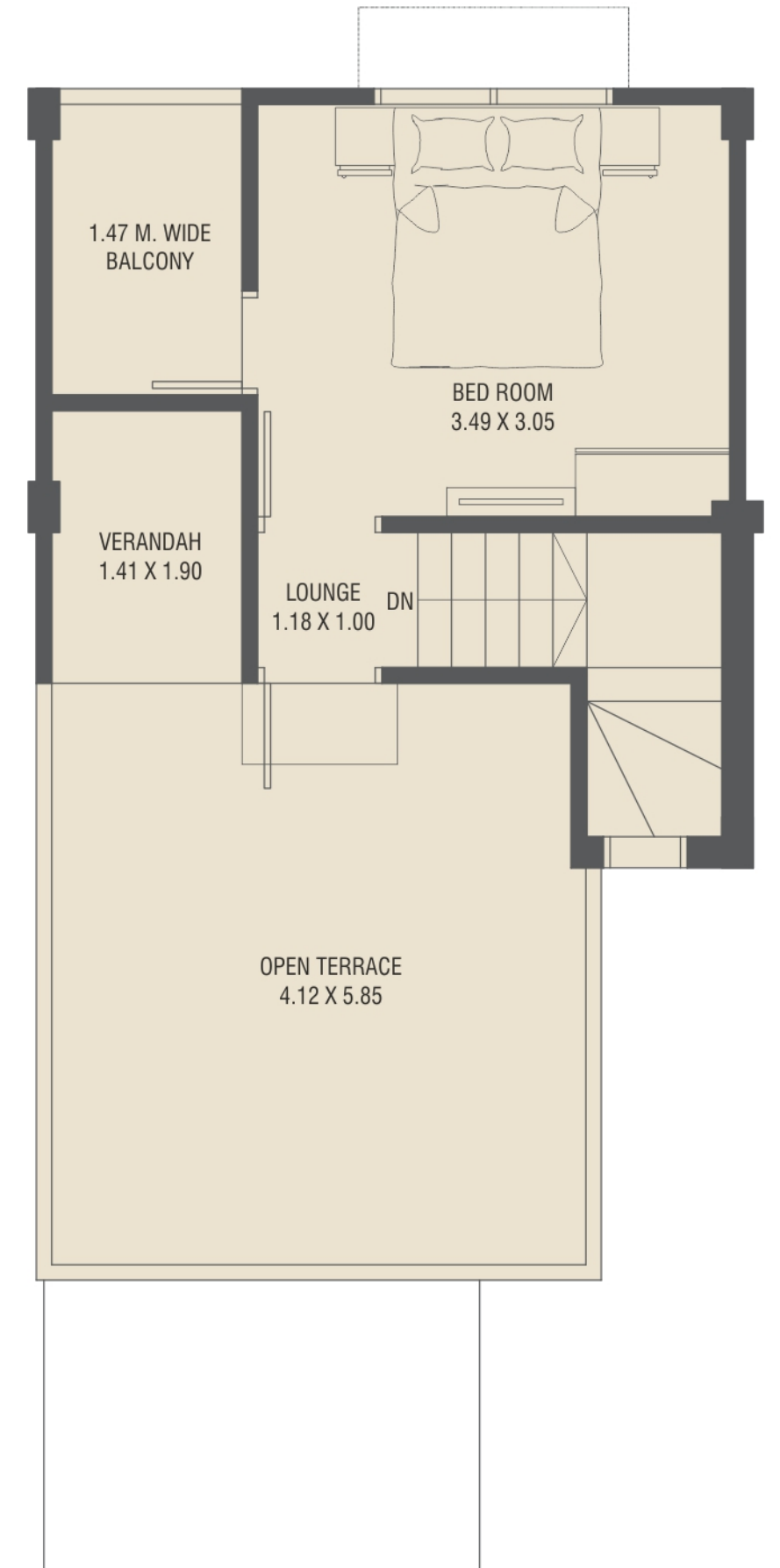
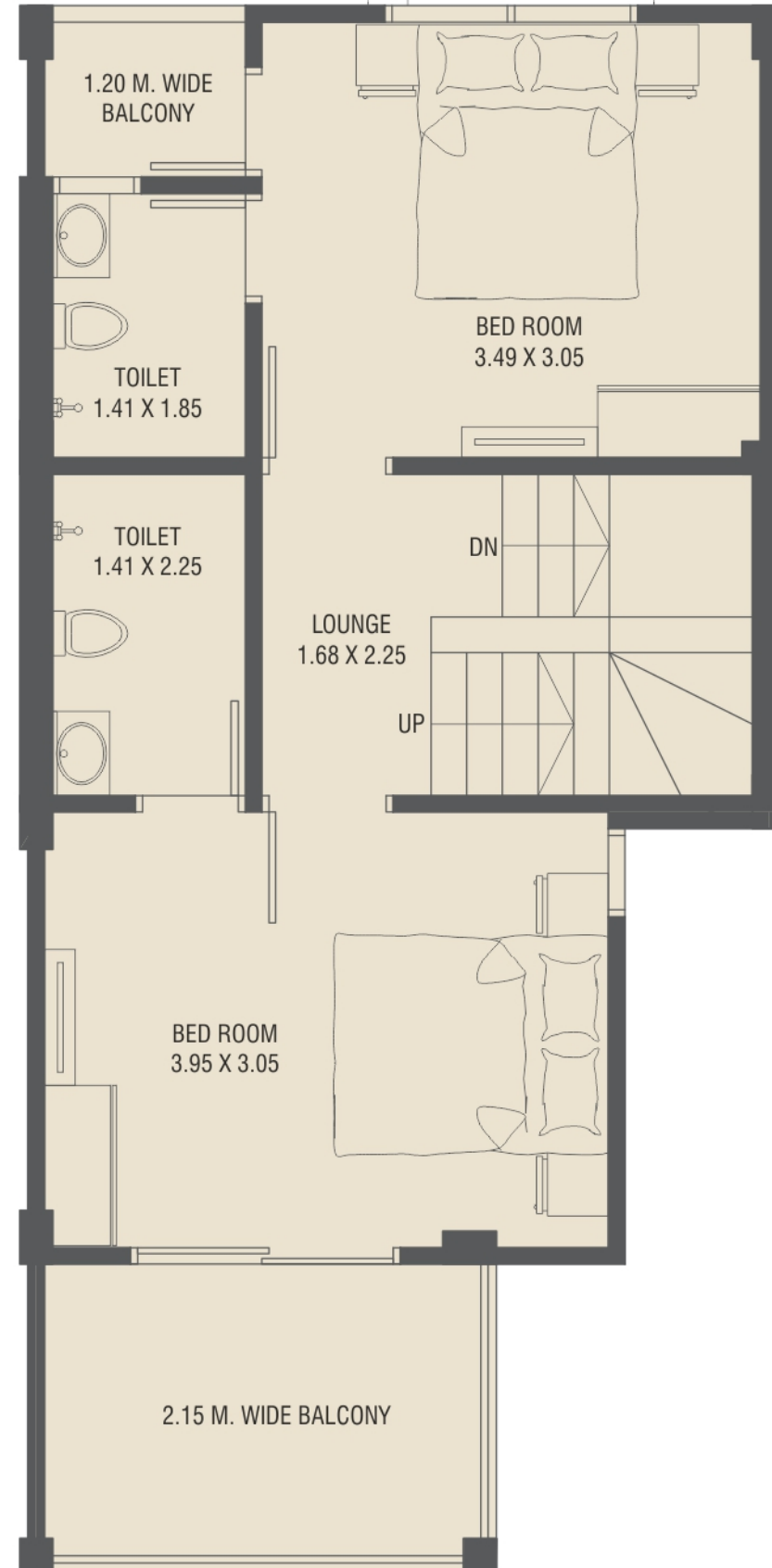
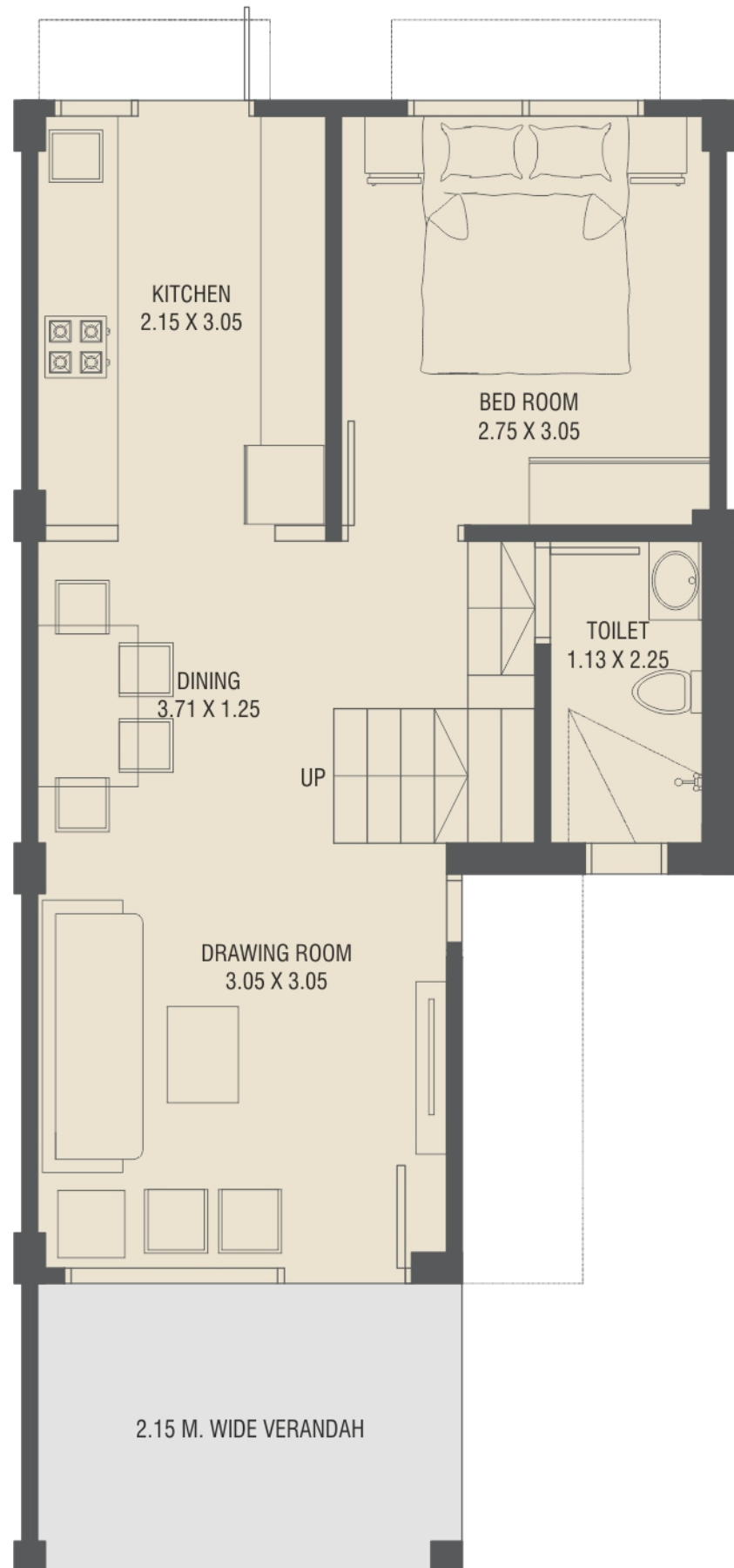
TYPE - A | 4 BHK  
Unit No - 2

मेपल बंगलोर 2  
4 BHK लक्ष्मीयस बंगलोर





**TYPE - B | 4 BHK**  
Unit No - 14

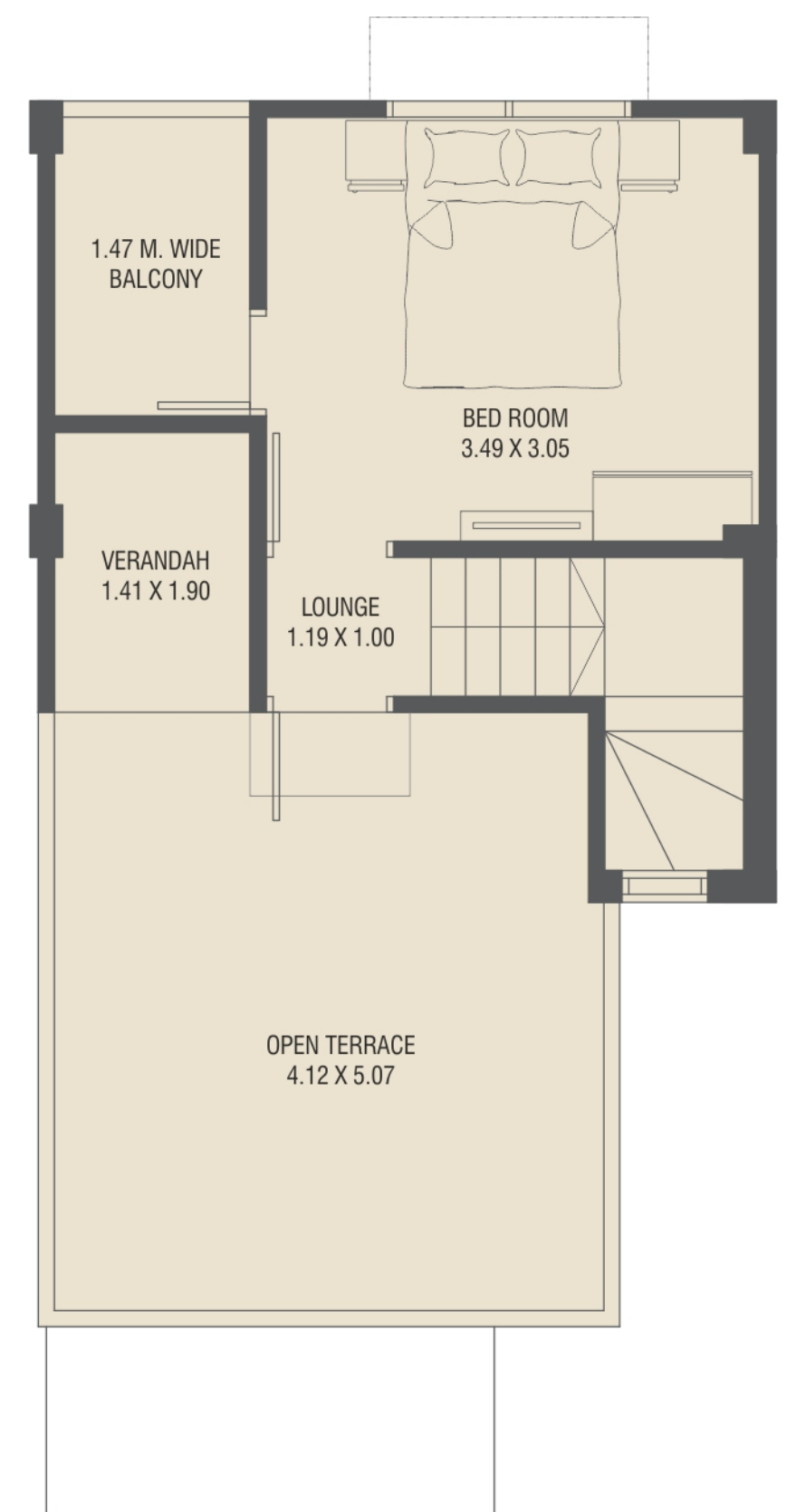
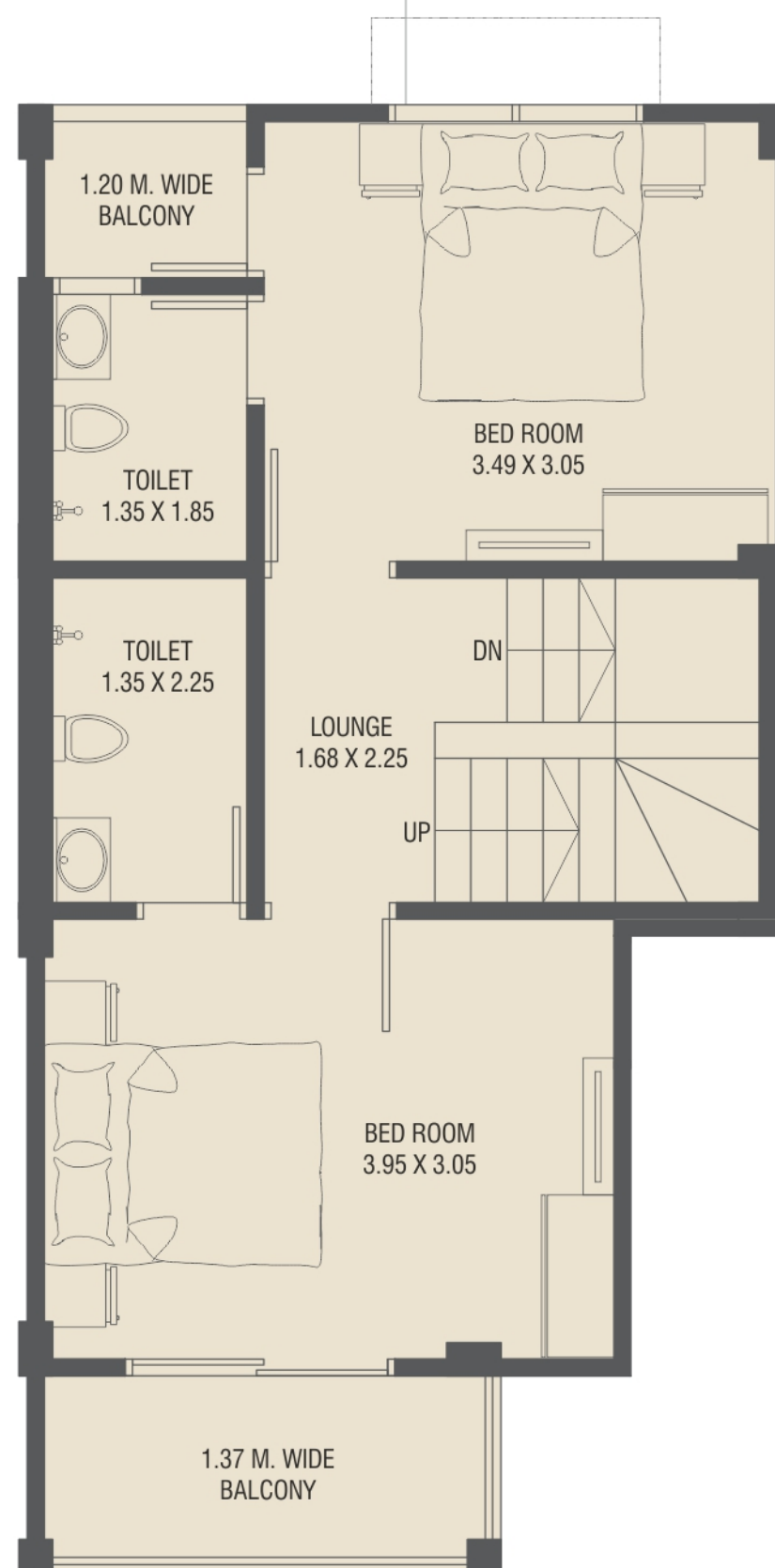
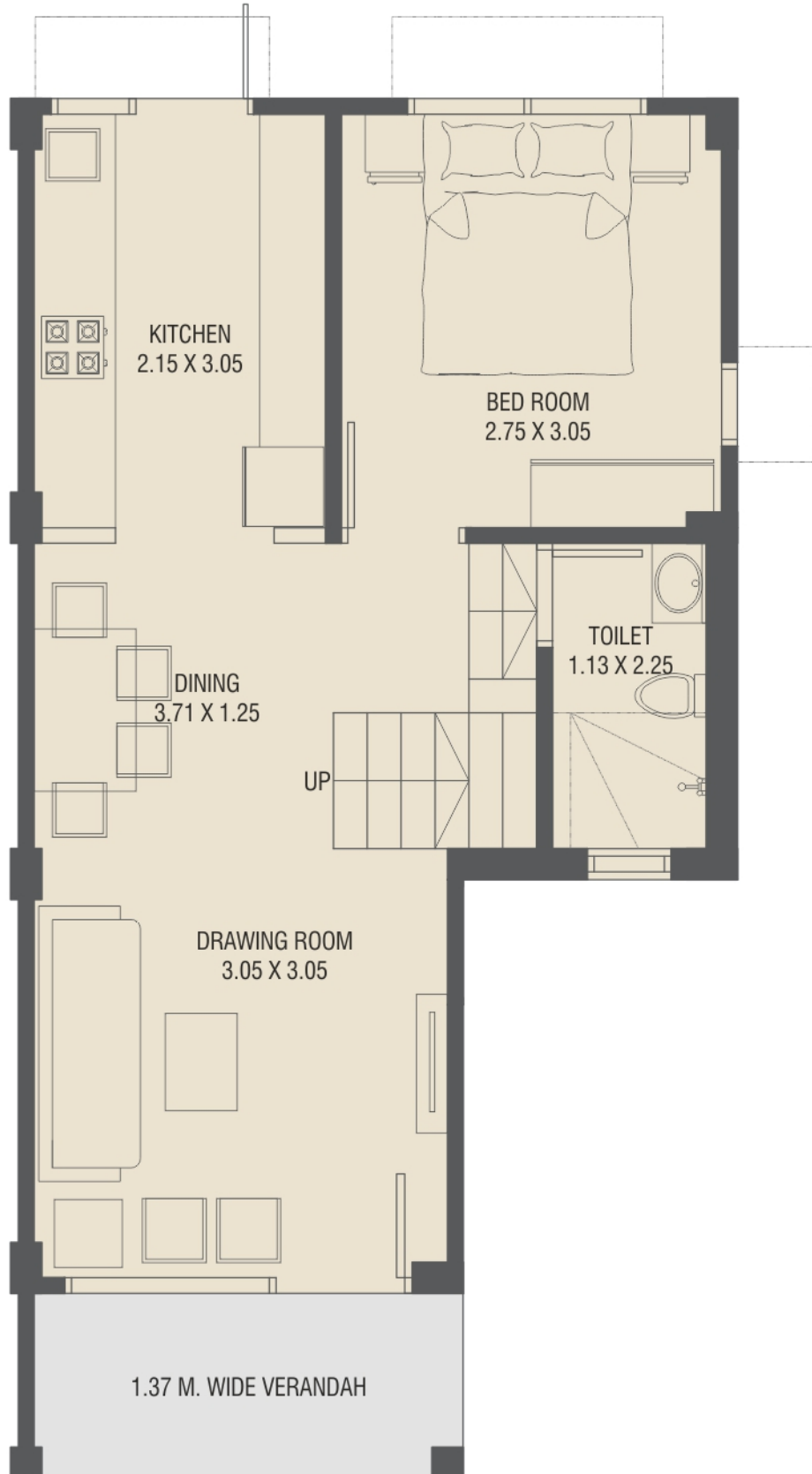




TYPE - C | 4 BHK  
Unit No - 34



મેપલ બંગ્લોઝ 2  
4 BHK લક્ઝરીયસ બંગ્લોઝ





## SPECIFICATION



**STRUCTURE**  
R.C.C frame structure.



**WALL FINISH**  
Internal smooth finish plaster with 2 coats putty.  
External double coated cement plaster with acrylic paint.



**DOORS & WINDOWS**  
Wooden doors with wooden frame fully glazed Powder coated aluminium windows.



**FLOORING**  
Vitrified flooring in all rooms, granite in stairs with SS railing.



**KITCHEN**  
Granite platform with SS sink & lintel level glazed tiles dado.



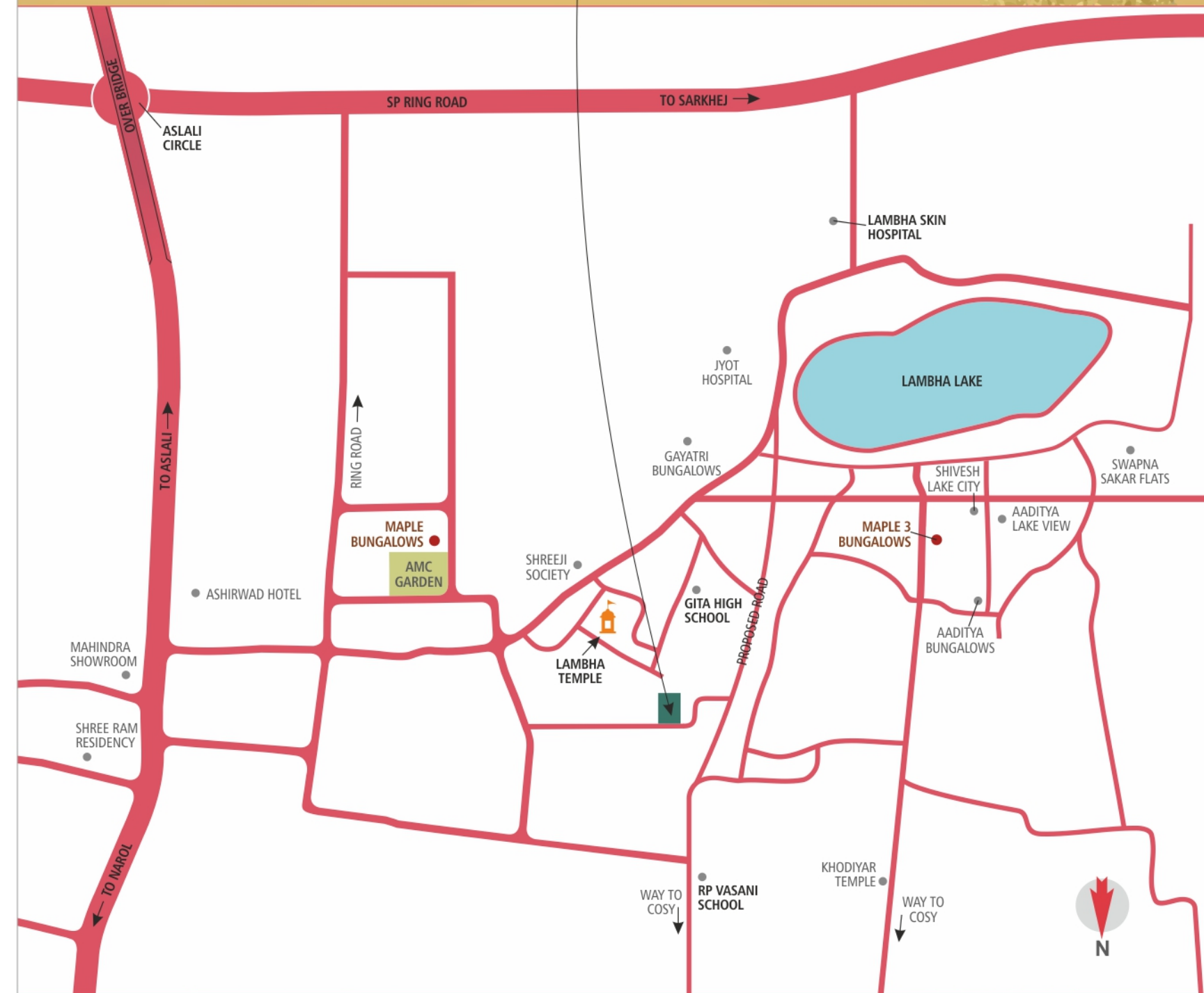
**BATH**  
Ceramic tiles dado lintel level and flooring.



**ELECTRIFICATION**  
Single phase concealed copper wiring with adequate points.

# મેપલ બંગ્લોઝ 2

4 BHK લક્ઝરીયસ બંગ્લોઝ



### Terms & Conditions

- All the architectural and interior images in the brochure are merely simulated Interpretations using computer graphics to enhance the customer's understanding and are not factual images.
- The colour and general appearance of the flooring and wall tiles, sanitary ware & fitting walls, ceilings, windows, doors, internal roads, trees, shrubbery etc. shown in the simulated computer graphics images are taken from the object libraries for the purpose of presentation and prospective buyers of the concerned property are advised to refer to the constructor specifications.
- Additional amenities and or utilities not mentioned or shown in the brochure but may be required as per the law should be deemed to be forming part of the project by the purchaser.
- All rights reserved with the developers to make any changes in the project as deemed necessary and all the members shall abide by such changes.
- GST, Stamp duty, registration charges, or any other charges and taxes as & when levied by government or any of its body shall be borne by purchaser/buyer/legal possession holder.
- This brochure is not to be treated as part of the legal document and is for an easy display of the project.
- Subject to Ahmedabad Jurisdiction only.
- The Brochure is for restricted private circulation only and is not to be considered as a legal document with obligations for specific performance. It is meant for the purpose of conceptual presentation only.



# મેપલ બંગ્લોઝ 2

4 BHK લક્ઝરીયસ બંગ્લોઝ

Developer

**MAPLE BUILDTECH**

Call: 90816 04666 | [www.mapledeveloper.in](http://www.mapledeveloper.in)

Site

**Maple Bungalows 2**

Nr. Lambha Temple, B/s. Gita High School  
Lambha, Ahmedabad-382405.

Architect

**Jharna Nagori**

**Jigar Panchal Architects**

RERA: PR/GJ/AHMEDABAD/AHMEDABAD CITY/AUDA/00000000/000000

Website: [www.gujrera.gujarat.gov.in](http://www.gujrera.gujarat.gov.in)