

# SHREE SAI HARI

1 BHK Luxurious Apartments at Adalaj



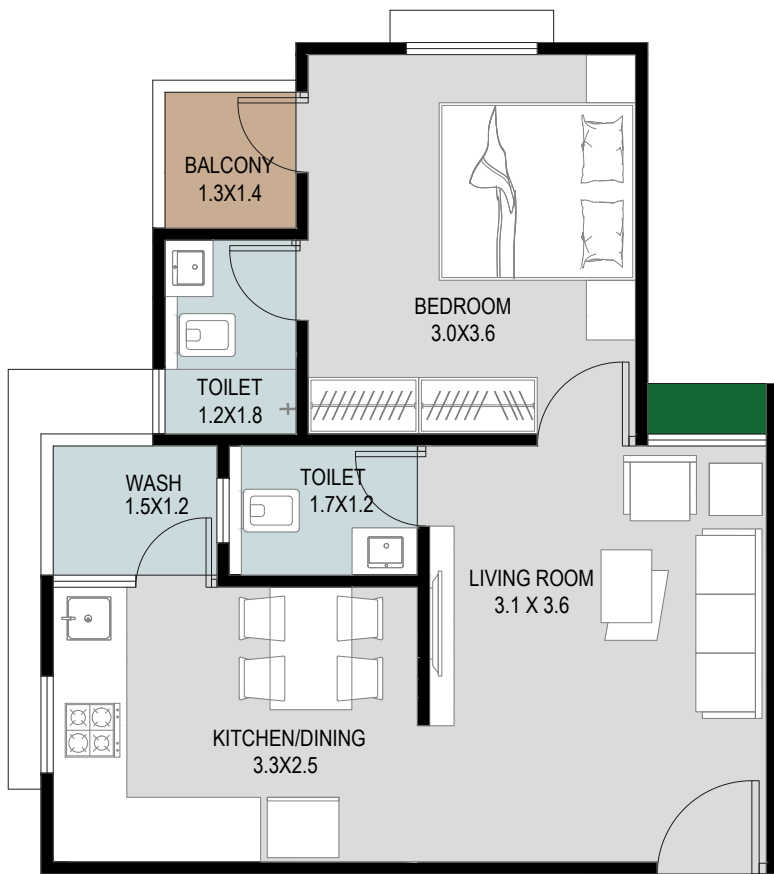




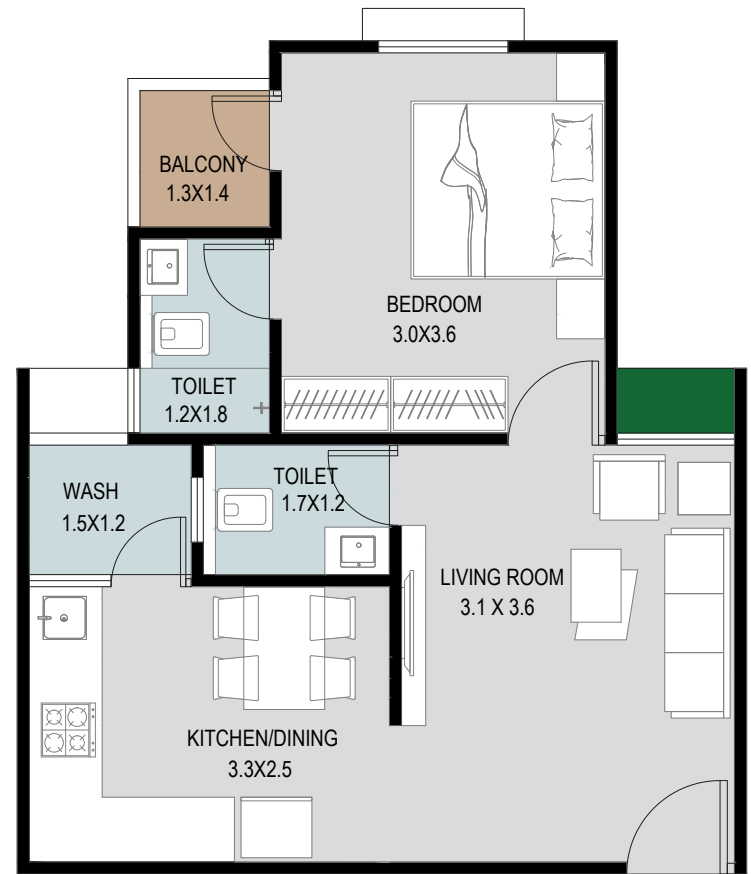
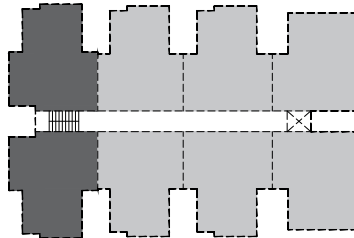
Typical Floor Plan

# SHREE SAI HARI

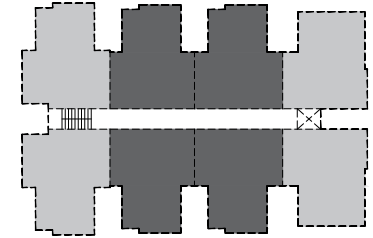
1 BHK Luxurious Apartments at Adalaj

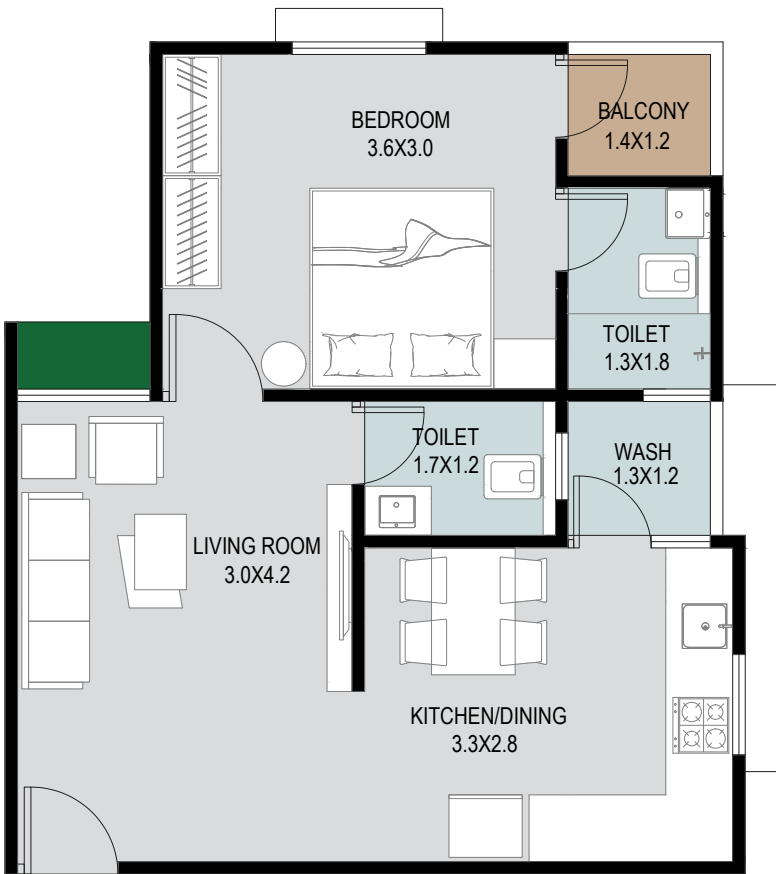


**TYPE - A PLAN**  
**1 BHK**  
**RERA CARPET: 38.36 SQ.MT.**



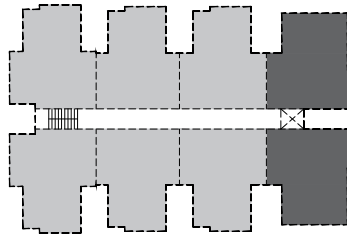
**TYPE - B PLAN**  
**1 BHK**  
**RERA CARPET: 38.36 SQ.MT.**





**TYPE - C PLAN**  
**1 BHK**

**RERA CARPET: 39.82 SQ.MT.**



**ALL DIMENSIONS ARE IN METER.**







## Salient Features:

Low Rise Apartment Building

Elevator for easy Access

Three side Road Access

Ample Parking space

Spacious Balcony

Developed Terrace

Earthquake resistant R.C.C. Structure

Single Tower

Ground cover plantation

Spacious Foyer Area

2 Bathrooms in each apartment

Appropriate Signages and Name plate board

# Specification:

## FLOORING

**Living/Bedrooms/Balcony/  
Kitchen/Dining Area**

Vitrified Tiles

**Kitchen**

Vitrified Tiles, Granite platform with S.S. Sink

**Balcony**

Ceramic / Rustic Tiles

**Doors**

Main Door - Laminated  
Other will be flush doors with oil paint

**Windows**

Sliding Aluminium Windows

**Toilets**

Glazed/Ceramic tiles upto the lintel level  
Counter Basin / Wall Hung Basin  
EWC Couple Closet  
CP ISI Standard Brass Fittings

## ELECTRIFICATION

Concealed Copper wiring with Modular Switches  
MCB Distribution Panel

**COLOR**

Internal: Putty Finish  
External: 100% Acrylic paint

**PLASTER**

Internal: Single Mala plaster  
External: Sand faced Plaster

### Notes:

- Developer reserve rights for any change in plans, elevations, specifications, amenities and other details in comply with the statutory regulations and shall be binding to all members.
- This Brochure is only for advertisement purpose only and it shall not to be treated as part of legal document.







# LOCATION:

Three side Road access

2 minute walk from adalaj vegetable market

2 minute walk from nearest Bank

Surrounded by many religious Temples

2 minute walk from Adalaj ni Vav (WORLD HERITAGE SITE)

nearest HOSPITAL - 10 minutes away

5 minute walk to Government School

AHMEDABAD - MEHSANA Highway within 1 KM

SARKHEJ - GANDHINAGAR Highway within 1 KM





ADALAJ OVERBRIDGE

GANDHINAGAR HIGHWAY

AHMEDABAD - MEHSANA HIGHWAY

TOWARDS LVARASAD

ADALAJ ROAD

ADALAJ LAKE

ADALAJ CIRCLE

ADALAJ NIVAV

KANYA SHALA, ADALAJ

ADALAJ VEGETABLE MARKET

TOWARDS KOKA

CHEHER MATA MANDIR

RAMJI MANDIR

**SITE**

**Developer:**

Kashtbhanjan Dev Developers

**Architect:**

Bhumit Banthia  
B Arch. M Arch. COA  
Neufhaus Design Studio

**Site:**

Beside Cheher mata Mandir, near Adalaj Vav, Adalaj, Gandhinagar, Gujarat

**Contact:**

M: 9227218468,  
M: 7383151138,  
M: 9016359738,  
M: 9426563401

Location QR Code:

