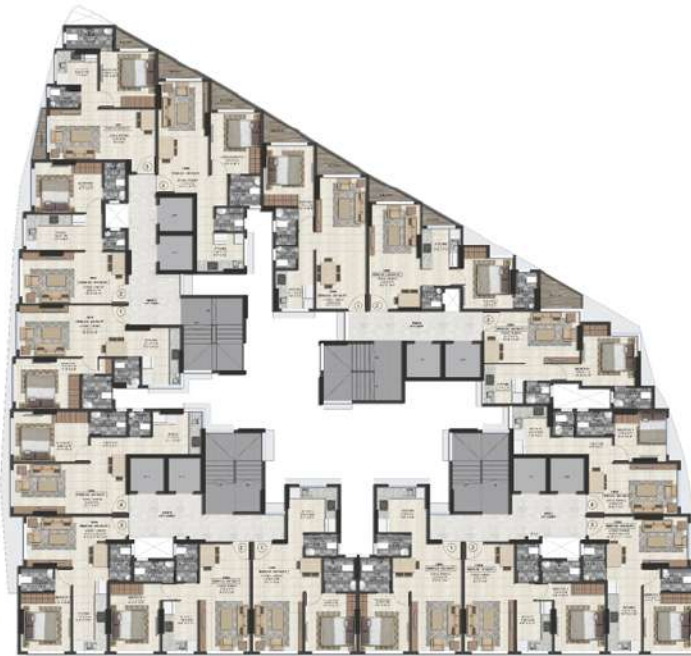




# Internal Specifications

- Premium vitrified flooring
- Anti-skid ceramic glazed tile in the bathroom
- Premium quality C.P Fittings
- Jaquar sanitary ware and fitting
- Branded OBD Paint
- POP/Gypsum finished wall
- Aluminium powder window
- Granite Kitchen Platform
- Laminated Finish doors with teakwood polished frames and brass hinges
- 24\*7 CCTV Surveillance in common areas



TYPICAL FLOOR PLAN

WING A		
FLAT NO	UNIT TYPE	RERA CARPET AREA
1	1BHK	433 SQ. FT.
2	1BHK	427 SQ. FT.
3	1BHK	406 SQ. FT.
4	1BHK	387 SQ. FT.

WING B		
FLAT NO	UNIT TYPE	RERA CARPET AREA
1	1BHK	433 SQ. FT.
2	1BHK	427 SQ. FT.
3	1BHK	406 SQ. FT.
4	1BHK	474 SQ. FT.

WING C		
FLAT NO	UNIT TYPE	RERA CARPET AREA
1	1BHK	446 SQ. FT.
2	1BHK	419 SQ. FT.
3	1BHK	435 SQ. FT.
4	1BHK	391 SQ. FT.

WING D		
FLAT NO	UNIT TYPE	RERA CARPET AREA
1	1BHK	501 SQ. FT.
2	1BHK	420 SQ. FT.
3	1BHK	423 SQ. FT.



Ground Floor Plan



WING A UNIT PLANS



WING B UNIT PLANS



WING C UNIT PLANS







**Project Highlights**

- Contemporary 7-Storeyed Tower
- Grand Designer Entrance Lobby
- Optimally Planned 1 & 2 BHK With Lavish Balcony
- Doorstep Convenience Shopping On Ground Floor

SAYBA  
**ARCADIA**

**Your Gateway To A Dream Life**

Live your life in the lap of spacious 1 & 2 BHK homes nestled in the heart of a city brimming with opportunities. With exclusive Jodi flats crafted to unlock new levels of comfort and luxury, Sayba Arcadia is a contemporary 7-storeyed tower strategically located at the heart of Kurla



## Transport Network

**TRANSPORTATION NETWORKS**

- Kurla Danway Station - 2Mins
- LTT Railway Station - 8Mins
- Sion Railway Station - 8Mins
- Chhatkoper Railway Station - 10Mins
- Vidyanagar Railway Station - 8 Mins
- Airport - 35 Mins
- BKC - 5 Mins
- Bus Stop - 1 Min
- Taxi/autor Stand - 2 Mins
- EEH - 5 Mins
- WEH - 10 Mins

**EDUCATION: SCHOOLS/ COLLEGES**

- Orchid International - 5 Mins
- Mount Litera - 8 Mins
- Anjuman High School / Jr. College - 5 Mins
- Michael High School / Jr. College - 7 Mins
- Holy Cross High School / Jr. College - 15 Mins
- Kohinoor International School - 10 Mins
- Dhruvshah Ambiani American School - 15 Mins

**COMMERCIAL HUBS**

- Equinox Business Park - 2 Mins
- Kanaka Zillion - 5 Mins
- Jio World Center - 10 Mins
- The Capital One BKC - 8 Mins
- Bourse - 8 Mins

**SHOPPING AND MALLS**

- Phoenix Market City - 15mins
- 10mins
- M.H Supermart - 10 Mins
- Green Grocery Vegetable
- Kurla Market - 3 Mins

**LEISURE & ENTERTAINMENT**

- Food Court/ Restaurants - 5 Mins
- Phonexia Pub - 7 Mins
- Bharat Cineplex - 3 Mins
- Kohinoor Turf Park - 8 Mins
- MCA Cricket Ground - 10 Mins

**UPCOMING INFRASTRUCTURE IN KURLA**

- Mumbai Metro Line 3 Colaba - Bandra Kurla Complex
- Metro Line 4
- Metro Line 2B
- Proposed Mumbai - Ahmedabad Bullet Train
- Proposed Mumbai - Pune Hyperloop
- IFC (International Finance Corporation)

**HOSPITALS**

- Kurla Nursing Home - 2 Mins
- Asian Heart Hospital - 10 Mins
- Fauziya Hospital - 10 Mins
- Bhabha Hospital - 7 Mins
- Criticare / Kohinoor Hospital - 10 Mins

**LOCATED IN CLOSE PROXIMITY TO THE**

- City's Biggest Business Hub - BKC
- Airport
- Railway Station
- Bus Stops
- Highways

