

Landmark Living on the Serene



Corporate Address

Flat No 101 & 102, TLR Residency
Opposite Shyam Hospital, Z.P Road,
Hastinapuram, Hyderabad – 500079

sales@sirisampadahomes.com

www.sirisampadahomes.com



Scan this QR code to
view the Website



Scan this QR code to view the site
Google Coordinates

NOTE : This brochure is only a conceptual presentation of the project and not a legal offering.

The promoters reserve the right to make changes in plans, specifications and elevation as deemed fit.







Live the Extraordinary

Land Extent	:	AC 3.22 GTS
Format	:	Triplex Villas
Total Units	:	51
Clubhouse	:	6000 Sft.

If you ask anyone what's their choice of a perfect home, chances are most of them will tell you that it's not an easy feat. However, sometimes, a property ticks all the right boxes pop up – location, design, accessibility and amenities.

Presenting one such property, The Serene, a new luxury residential development by Siri Sampada Homes located at Turkayamjal, RR District. The project gives the excitement of elegant architecture, prestige, and the chance for its residents to enjoy the perks of living in a calm and desirable location.

Serene has created spaces to deliver experiences that enable you to live, work, play, eat, learn, meet, bond, and grow. Because we believe that experiences form memories, and it is our job to help you make memories that evoke joy, contentment, love, camaraderie, or the bliss of solitude.



Breathing in fresh air is like medicine for the soul. There's something about taking a deep breath of fresh air that not only fills the lungs but also the mind with a sense of peace and happiness.

Have you ever just stopped and enjoyed the fresh air around you?

Well, you no more have to stop anywhere now.

With the balanced ventilation, Serene brings in the good air, banishes the bad, and conserves the energy. Surrounded by greenery, the community enables you to live, work, play, eat, learn, meet, bond, grow and everything that you ever dreamed of with a sense of peace.

Serene helps to let your home transform your reality. It believes that experiences form memories, and it is our job to help you make memories that evoke joy, contentment, love, camaraderie, or the bliss of solitude.

A Breath of fresh air, everyday





Amenities



Gym



Banquet Hall



Walking Track



Children's Play Area



Indoor Game Room



Maintenance Room



Yoga Area



Landscaping

Outstanding opportunities at your fingertips

Home is where the amenities are, and for a contemporary lifestyle in a residential township, extensive amenities and conveniences have become prominent.

Open to the skies with a panoramic view of the greenery all around. You can work out at the state of an art gym or discover peace and wellness through yoga and meditation. You are truly spoilt for choice! We have all this and more ready for you. Simply walk in and start playing!

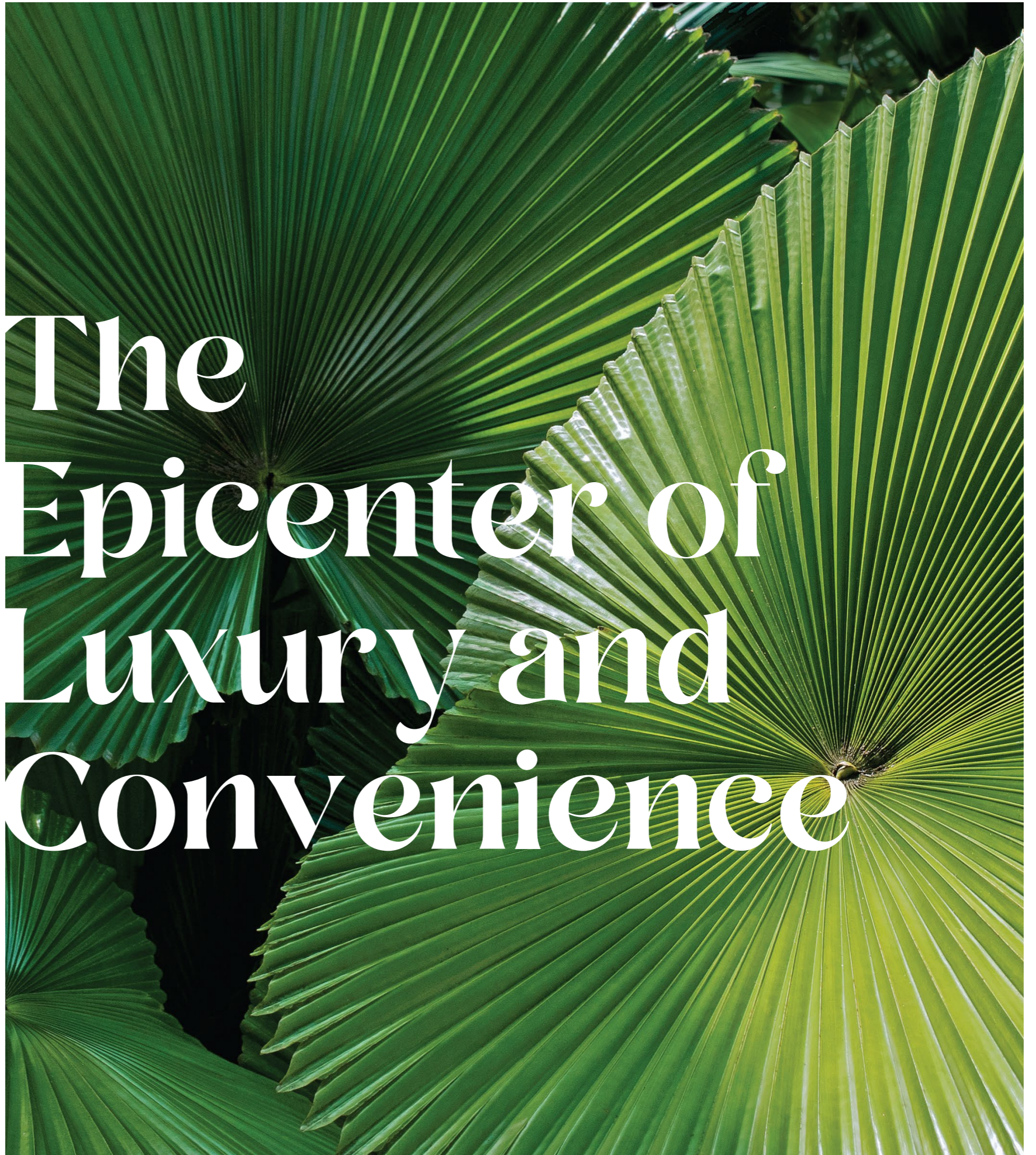


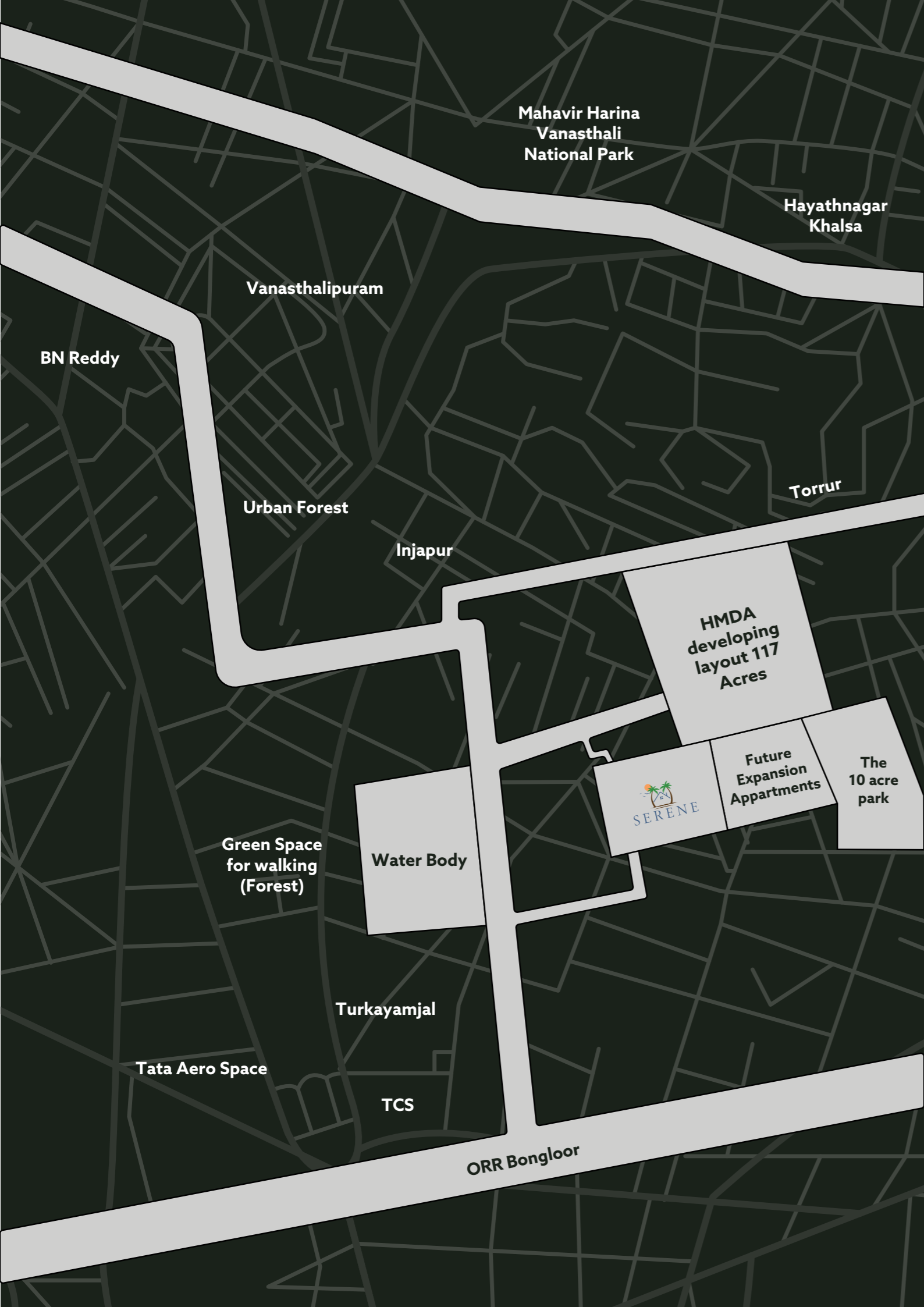
At the Serene, even something as simple as heading up to the rooftop is like going on a mini-vacation. Imagine you are on a luxury staycation as you unwind and rejuvenate. The serene scenery at The Serene promotes relaxation.

With such amenities to look forward to, residents of the community are promised a slice of paradise right in their community. Now, isn't that what a life of luxury is all about?



The Epicerter of Luxury and Convenience





117 Acres of Lush Green

This prime HMDA Approved project at Turkayamjal on Sagar Highway exit No.12 is Hyderabad's newest gem. The master road on the existing highway is planned in terms of the project. What's more, the coveted setting assures you of a serene, suburban living on a truly verdant scale.

Serene is one of the most well-curated layouts which is abutting a 117 acres developed by HMDA, consisting of 1000 plots and a well-planned township with a 10-acre park.

The township is close to IT Parks, Schools and IT park Adibatla. It is also a gateway to the newly coming RR District collectorate, Pharma City, Octopus Campus (Police Department, TATA Aerospace and BDL 3rd Unit.)

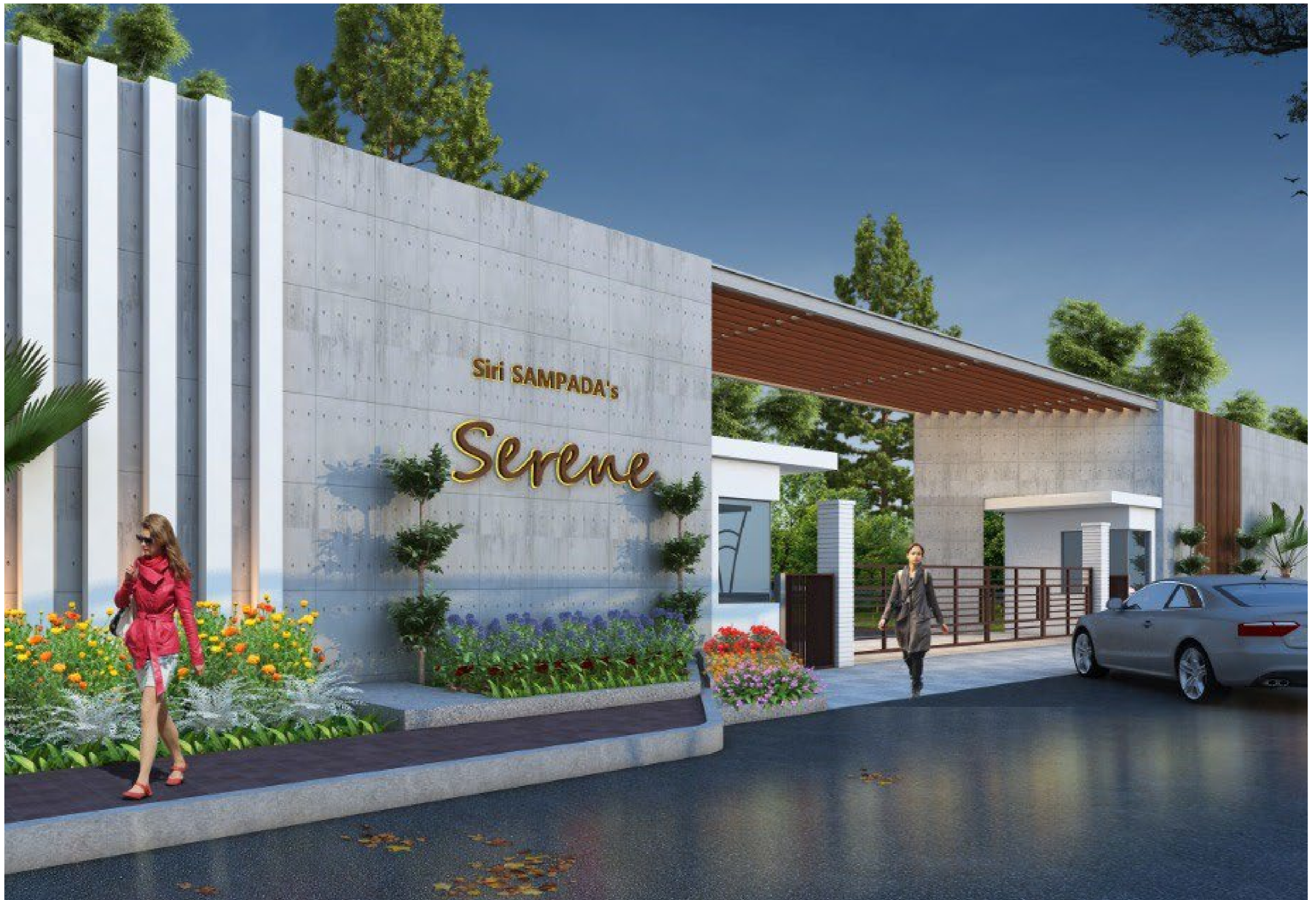


Pragmatically Planned



Based on how most modern apartments these days are almost like the size of a shoebox, trust us when we say that Serene promises ample space – it is what your lifestyle calls for.

The interior space of each villa has been designed considering the optimal usage of space for an enriching experience. Even the little details have been planned with great attention. The features such as size, style, ceiling and flooring are taken into consideration. Ventilation is kept on the list of priorities so that the air in your home facilitates the better movement of air and light in your home.





Legend



- A ENTRANCE PLAZA
- B UTILITIES
- C CLUB
- D PARTY LAWN
- E CHILDREN'S PLAY AREA
- F OPEN SIT-OUT



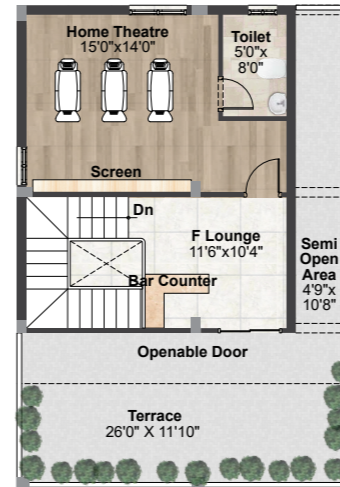
171 EAST

Plot Size **33'3" x 46' 3"**

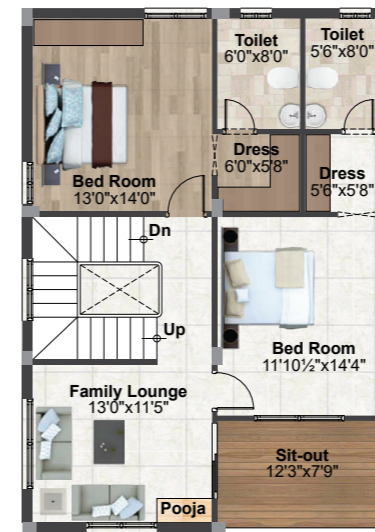
171 East Facing



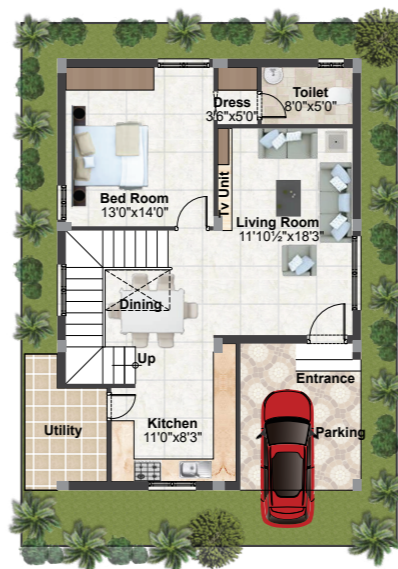
Area Statement	
Ground Floor	1020 Sft.
First Floor	1020 Sft.
Second Floor	759 Sft.
Total Built-up Area	2,799 Sft.



SECOND FLOOR



FIRST FLOOR



GROUND FLOOR



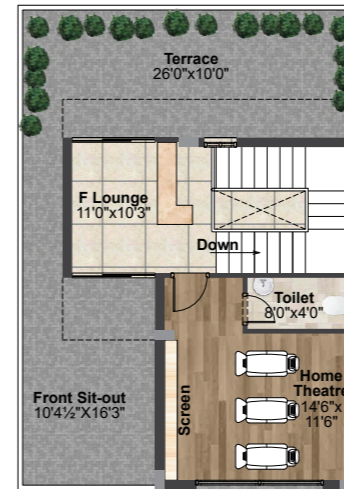
171 WEST

Plot Size **33'3" x 46' 3"**

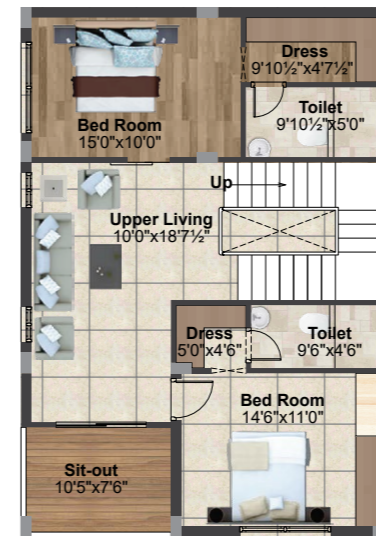
171 West Facing



Area Statement	
Ground Floor	1020 Sft.
First Floor	1020 Sft.
Second Floor	732 Sft.
Total Built-up Area	2,772 Sft.



SECOND FLOOR



FIRST FLOOR



GROUND FLOOR



212 EAST

Plot Size **41'3" x 46' 3"**

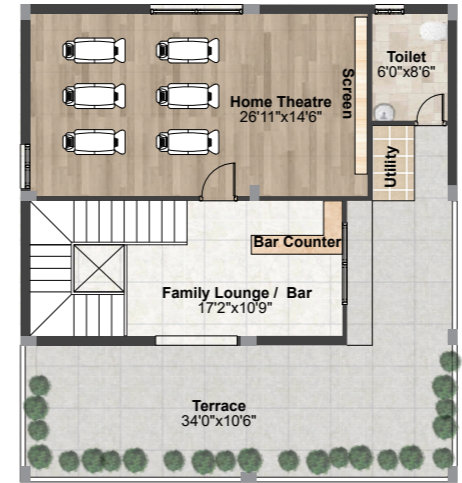


212 East Facing

Area Statement	
Ground Floor	1322 Sft.
First Floor	1322 Sft.
Second Floor	1181 Sft.
Total Built-up Area	3,825 Sft.



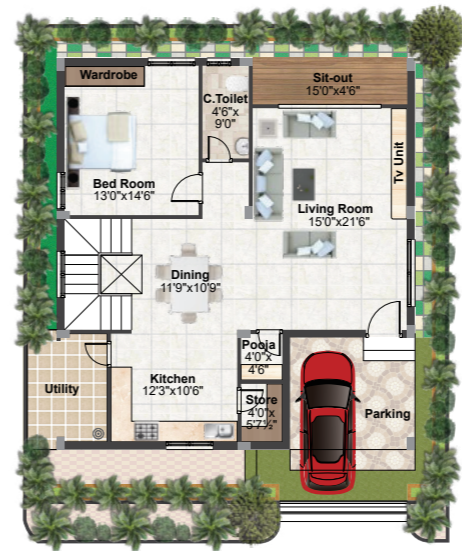
SECOND FLOOR



FIRST FLOOR



GROUND FLOOR



212 WEST

Plot Size **41'3" x 46' 3"**

212 West Facing

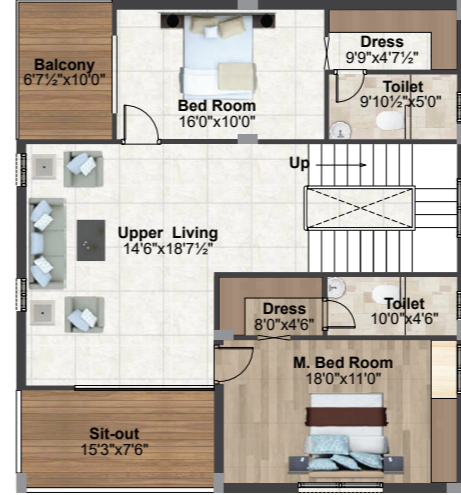
Area Statement	
Ground Floor	1322 Sft.
First Floor	1322 Sft.
Second Floor	875 Sft.
Total Built-up Area	3,519 Sft.



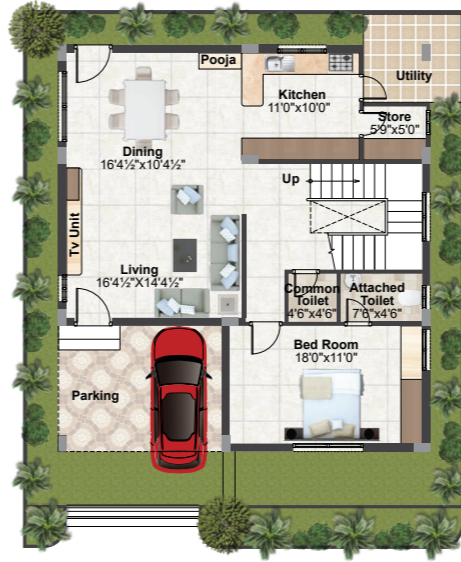
SECOND FLOOR



FIRST FLOOR



GROUND FLOOR







Specifications

Structure

RCC framed structure designed to wind and seismic load

Super Structure

Red bricks for external and internal walls

Plastering

External and internal walls with double coat cement plaster

Doors & Windows

Main door: Wood frame/equivalent with designer door shutter polished with melamine spray polish with Godrej or equivalent make hardware

Internal doors: Hardwood/ Engineered wood frame and flush shutter with veneer on front side with melamine polish and painter rear side

French doors: UPVC sliding door with clear glass

Windows: UPVC sliding windows with clear glass, safety grills and mosquito mesh

Flooring

1000 mm X 1000 mm vitrified tiles of reputed make for living areas

Leather finished granite flooring for staircase

Wood finish vitrified tiles of reputed make for Master bed and Multipurpose room

800 mm X 800mm vitrified tiles of reputed make for other bedrooms and kitchen

Anti skid vitrified tiles of reputed make for bathrooms

Wooden finished vitrified flooring of reputed make for the deck

Full body vitrified tiles for parking area

Plumbing & Sanitary

Polished chrome and sanitary ware fixture of reputed make

European water closet

Shower - single lever diverter with spout and overhead shower

Water Supply

Centralized water distribution by hydro-pneumatic/conventional system for all individual water meters for each villa

Dado

Kitchen: Polished glazed vitrified tiles of reputed make up to 2' above kitchen platform

Bathroom: Vitrified tiles of reputed make up to lintel level

Utility/Wash Area: Vitrified tiles of reputed make up to sill level

Kitchen

Granite for platform with stainless steel sink with faucet

Painting/Cladding

External: Texture/smooth paint with two coats of acrylic exterior emulsion and cladding as per elevation detail

Internal: 2 coats of emulsion paint over smooth putty finish

Staircase railing: SS railing with glass

Power Backup

Power backup for common areas and facilities

Provision for inverter wiring for whole villa

Electrical

Concealed copper wiring of reputed make

Power sockets for AC system and geysers

Power socket for cooking range, chimney, exhaust, refrigerator, microwave oven and water purifier in kitchen

Dish washer and washing machine provision in utility area

Three phase supply for each unit with individual source energy meter

Miniature Circuit Breakers for each distribution board of reputed make

Modular switch boards of reputed make

TV/Telephone

Fiber-to-home for internet

Provision for DTH & TV services in all bedrooms, living room, lounge and multipurpose room

Security System


Sophisticated round the clock security system

Solar fencing throughout the boundary

Water

Rainwater harvesting provided for recharging ground water levels

Drinking water(Krishna/municipal) will be provided



Building
homes
from the
heart

Our Glorious Journey

Since 2004, our aim has been to provide exceptional quality life spaces that enhance the living standards of our customers through serene and strategic locales. We believe in fulfilling our customers' needs and shaping their dreams into perfection. This belief has helped us come a long way and now we are listed amongst the top real estate companies in Hyderabad, Telangana.

Our strength lies in our skills and our dedication to deliver the best quality. We are an end-to-end solution provider for all your housing preferences. Keep showering your trust and love on us as we bring your dreams into existence, while simultaneously fulfilling ours.

Milestones

17

Years of experience

25

Number of projects

Our Projects



Affiliations

MEMBER OF
CREDAI
HYDERABAD



WRG Certification



Banking partner

