

**SWATI**  
**senor**

Ambli Bopal Road, Opp. Swagat Bunglow BRTS Stand  
Near by Shell Petrol Pump, Ahmedabad- 380058



1ST.BASEMENT PLAN





40.00 MT. WIDE T.P.S. ROAD

2ND BASEMENT PLAN





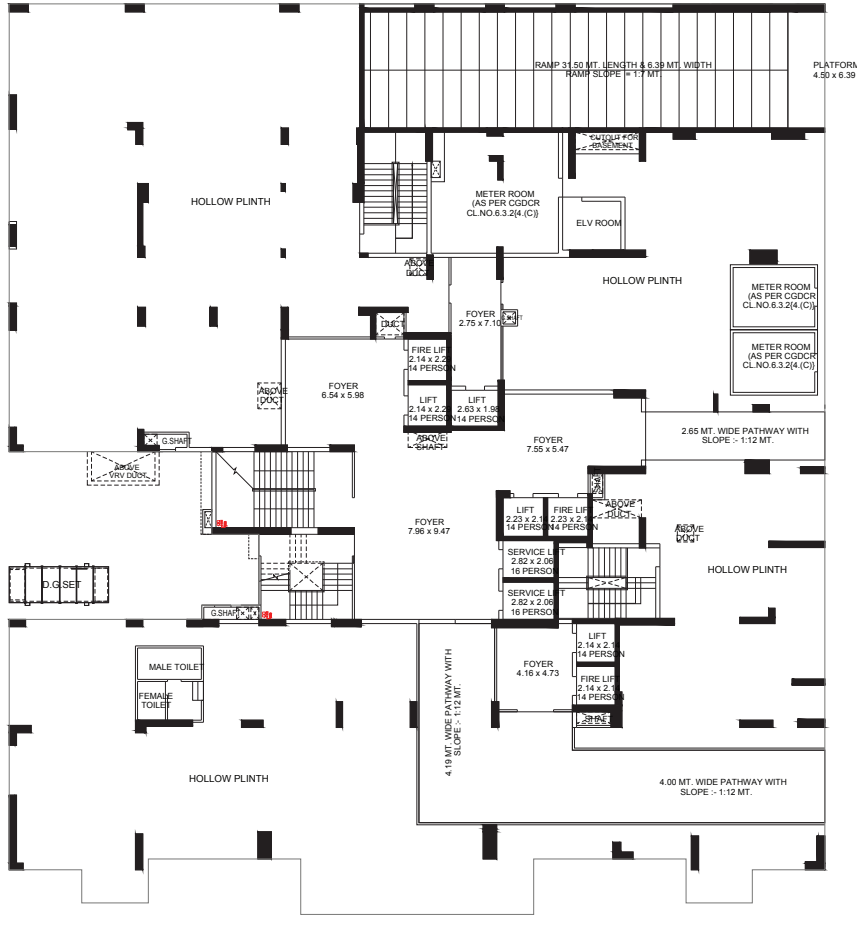
3RD BASEMENT PLAN



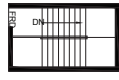
ADJ.F.P.NO. 191  
28.77

ADJ.F.P.NO. 1  
59.91

63.41  
ADJ.F.P.NO. 5/1



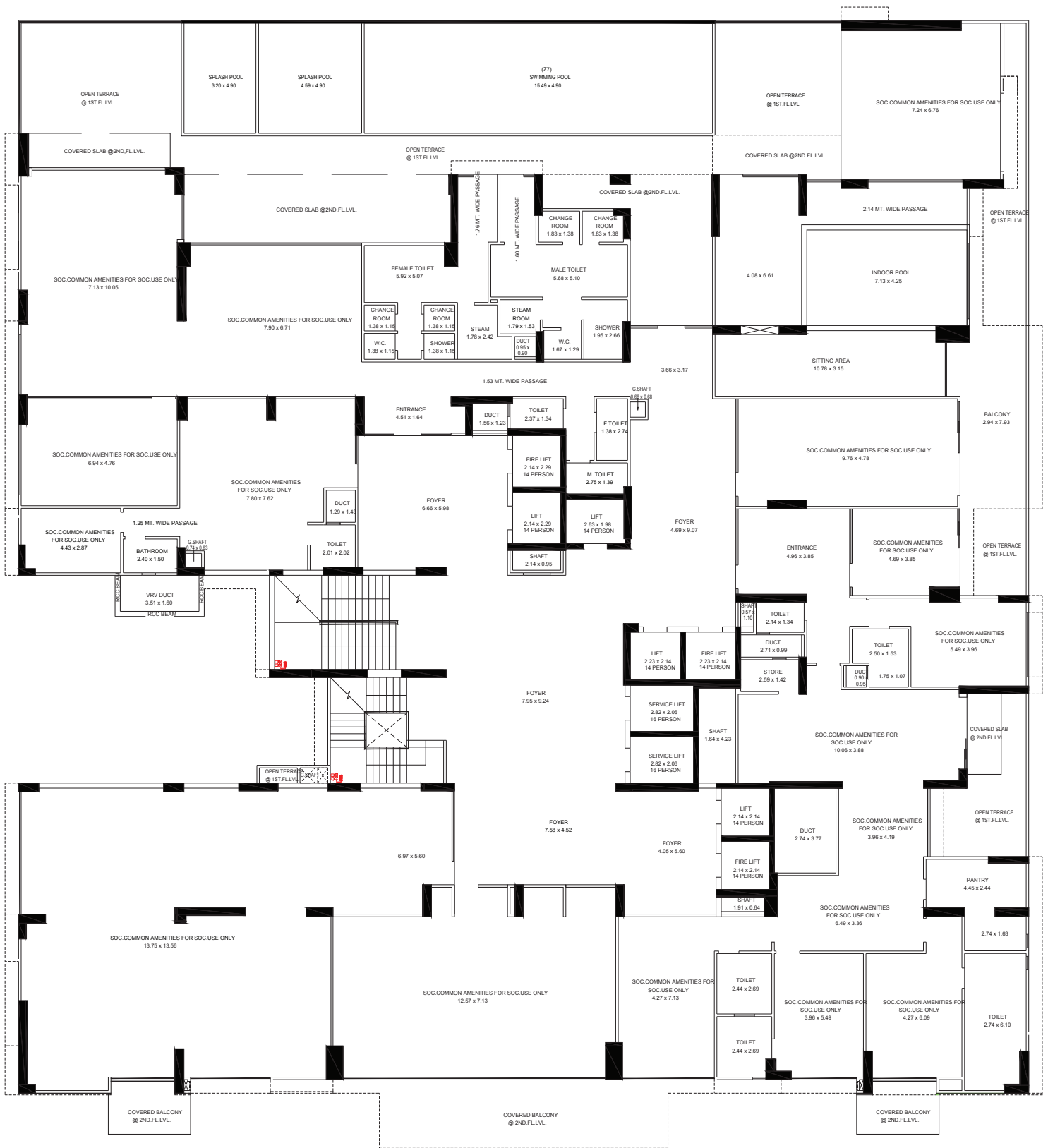
COMMON PLOT  
= 579.33 SQ.MT.



40.00 MT. WIDE T.P.S ROAD

# GROUND FLOOR PLAN





1ST FLOOR PLAN



Typical Floor Plan - 2nd, 4th, 6th, 7th, 8th, 10th to 13th, 15th to 18th

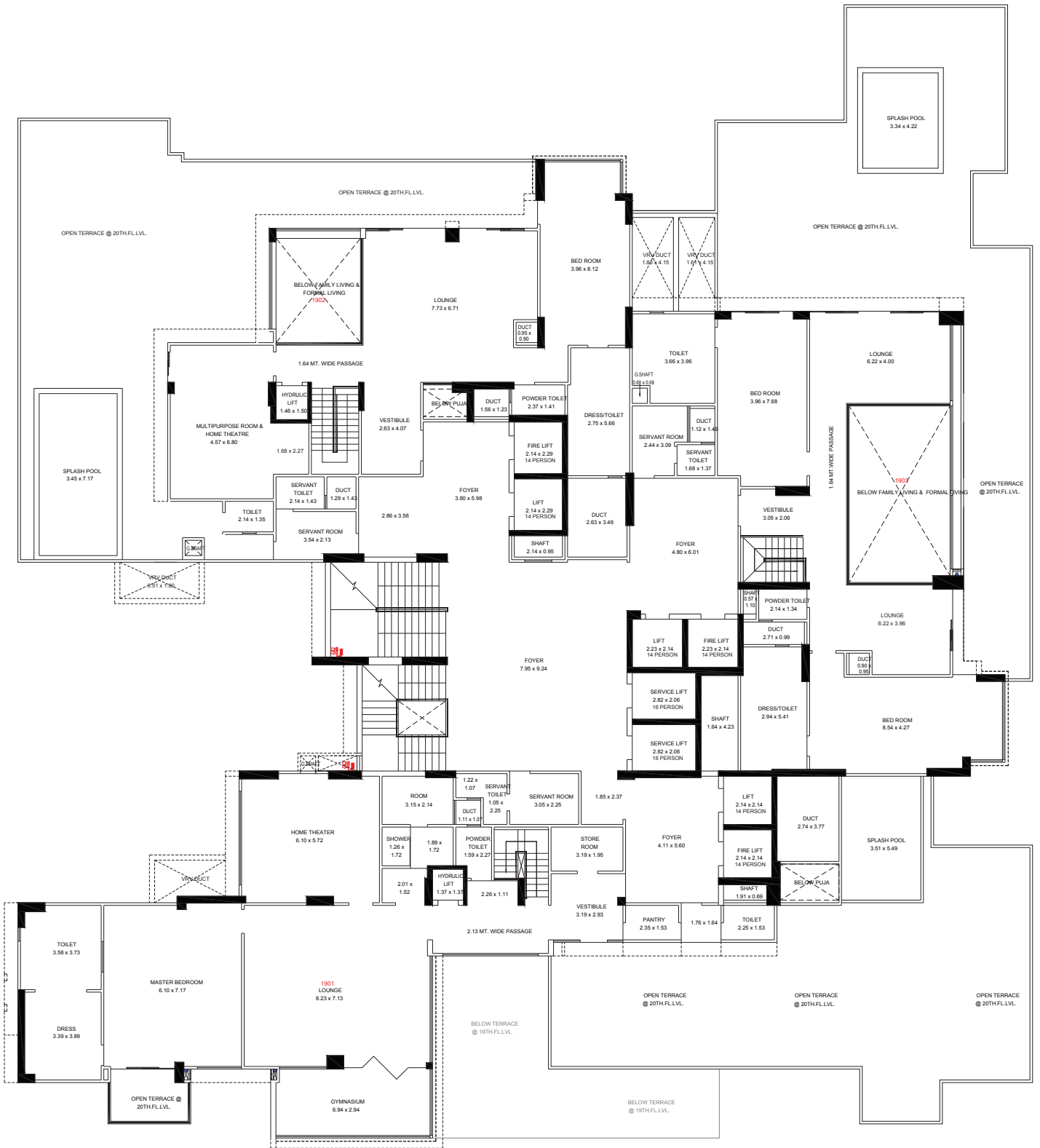


Typical Floor Plan- 3rd, 5th, 9th, 14th

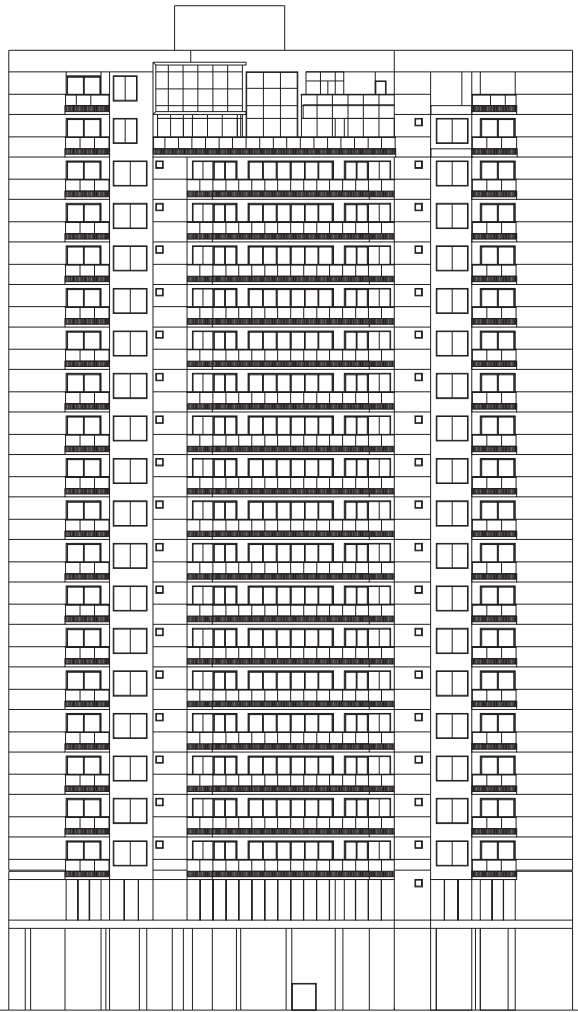




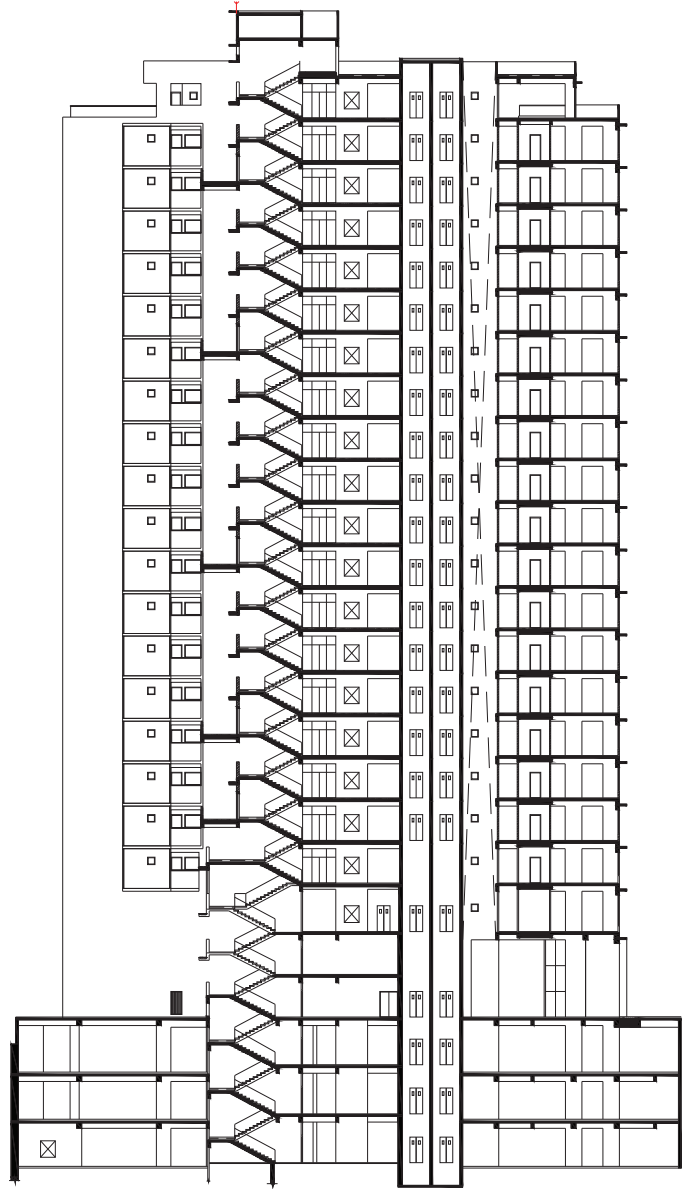
19TH FLOOR PLAN



20TH FLOOR PLAN



ELEVATION



SECTION

# Specifications

Air Conditioned Entrance Foyers

Provision for Centrally Air Conditioned Apartments

Provision for 3 Level Security- Campus Under CCTV Surveillance

Provision for Car Parking with Each Apartment

Provision for Common DTH Connection

Provision for EPABX Connection

Power Generator Backup For Emergency Utility

House Built Around Large Courtyard Facilitating Activities For All Age Groups

Wide Internal R.C.C. Roads with Internal Designed Stone Paving

Lush Green Environs With Beautiful Landscapping & Sit Outs

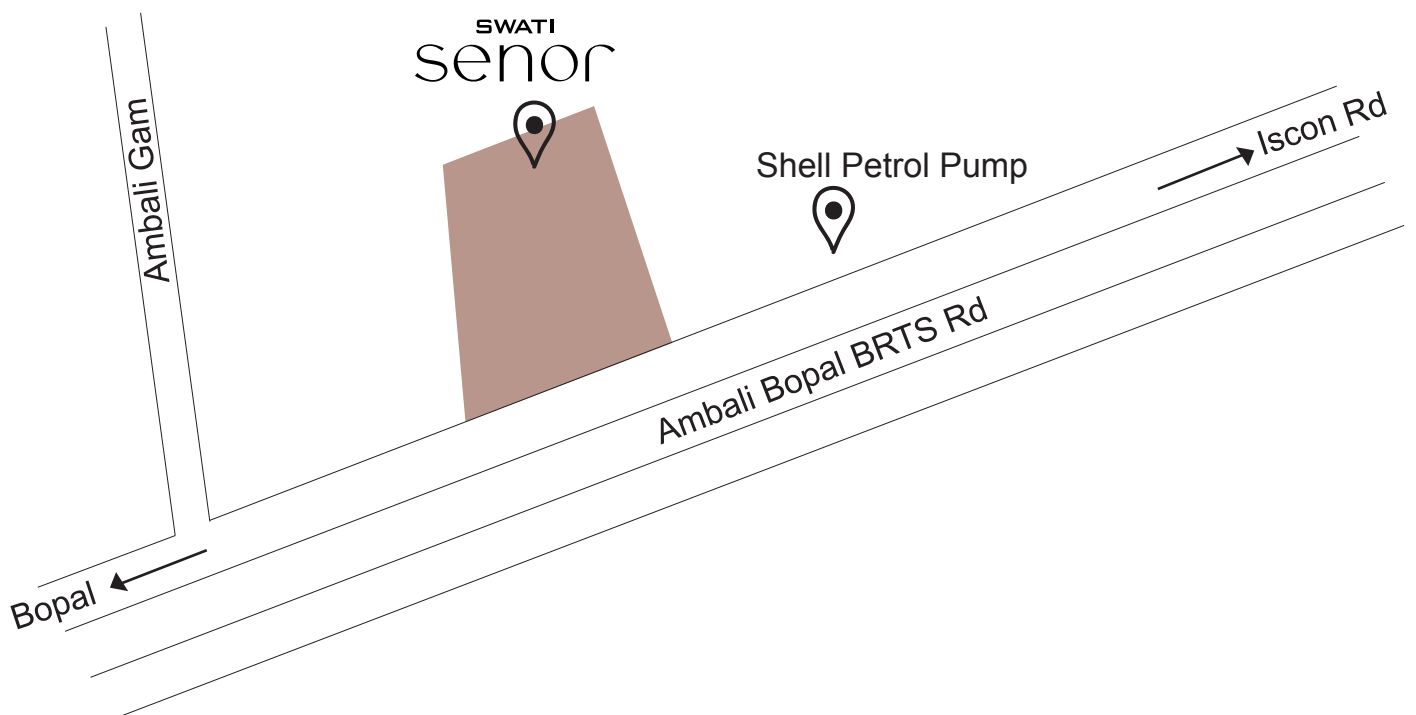
Provision for Vehicle Free Zone

Personal Foyer & Good Lift-To-Apartment Ratio

Architect: ADS Architect Pvt. Ltd.

Engineer: Kinal D. Soni

Project Location:



# Disclaimer

Brochure Terms & Conditions:

All the architectural and interior images in the brochure are merely simulated interpretations using computer graphics to enhance the customer understanding and are not factual images.

The colour and general appearance of the flooring and wall tiles, sanitary ware & fitting walls, ceilings, windows, doors, internal roads, trees, shrubbery etc. shown in the simulated computer graphics images are taken from the object libraries for the purpose of presentation and the prospective buyers of the concerned property are advised to refer to the constructor specifications.

Additional amenities and or utilities not mentioned or shown in the brochure but may be required as per the law should be deemed to be forming part of the project by the purchaser.

All Furniture including wardrobes, other sofa furnishings inter-alia curtains, mattresses, bed, linen, upholstery etc. lights and other electrical fixtures and appliances like air conditioners, refrigerators, TVs, telephones, laptops etc.. any of the equipment household accessories inter-alia crockery and cutlery, rugs, carpets, decorative pieces and wall hangings, wall papers, utensils etc. apparels and all other consumable and movable items shown in the simulated images do not form part of the sale of any property by the developer.

All rights reserved with the developers to make any changes in the project as deemed necessary and all the members shall abide by such changes.

GST, Stamp duty, registration charges, or any other charges and taxes as & when levied by government or any of its body shall be borne by purchaser/buyer/legal possession holder.

This brochure is not to be treated as part of the legal document and is for an easy display of the project Subject to Ahmedabad Jurisdiction only.

The Brochure is for restricted private circulation only and is not to be considered as a legal document with obligations for specific performance. It is meant for the purpose of conceptual presentation only.



Swati Construction Signature 1, 11th Floor, Sarkhej - Gandhinagar Hwy,  
Nr. Divya Bhaskar Office, Gujarat 380051 M: +91 9909040084

RERA Reg. No. \_\_\_\_\_

W: <https://gujrera.gujarat.gov.in>