

The logo features a stylized icon of three horizontal orange bars on the left. To its right, the word "SARAL" is written in a bold, black, sans-serif font, with a small "TM" trademark symbol above the letter "L". The word "AIR" is written in a lighter, grey, sans-serif font to the right of "SARAL".

SARALTM AIR

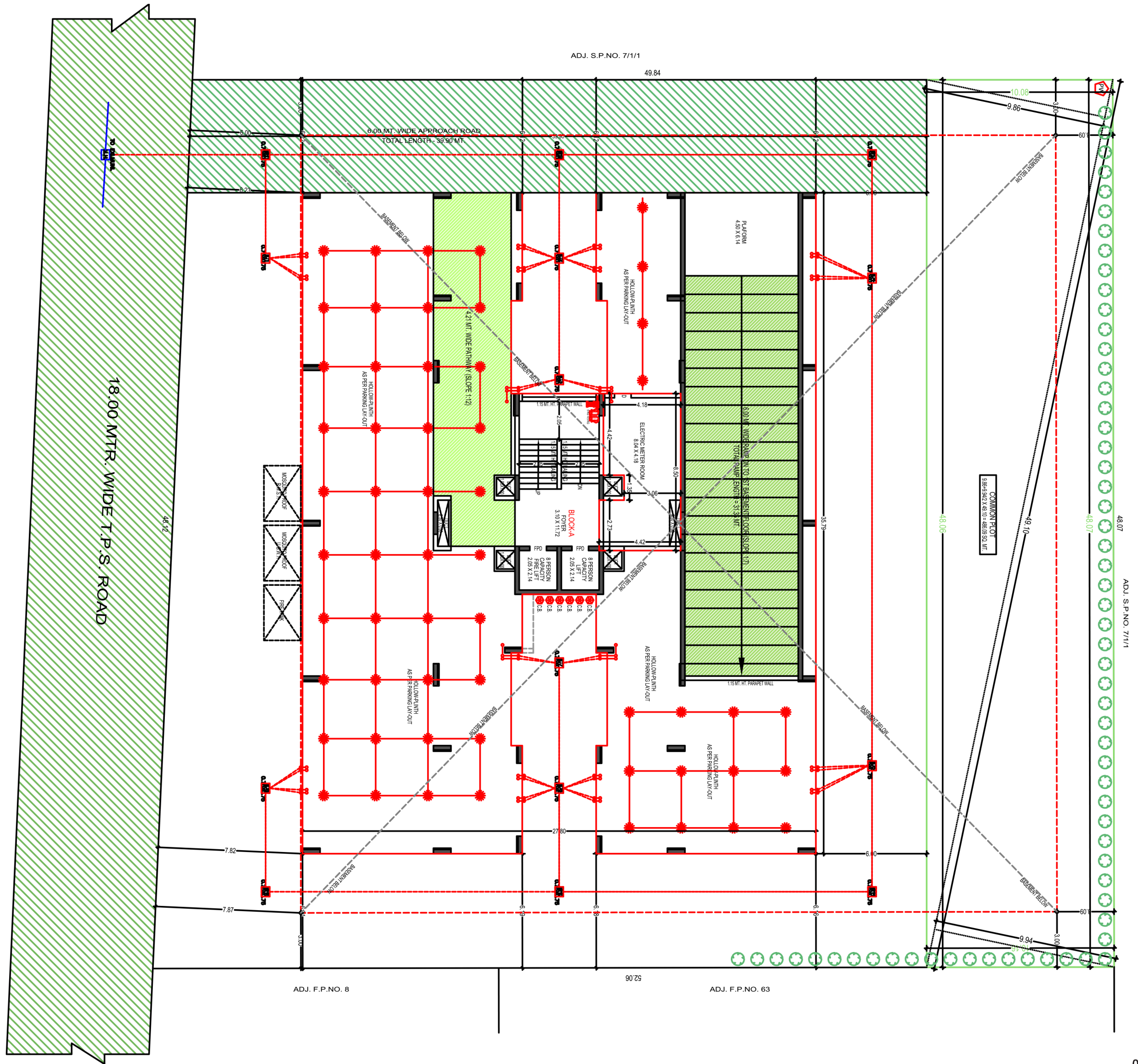
DEVELOPED BY

SARAL
BUILDCON

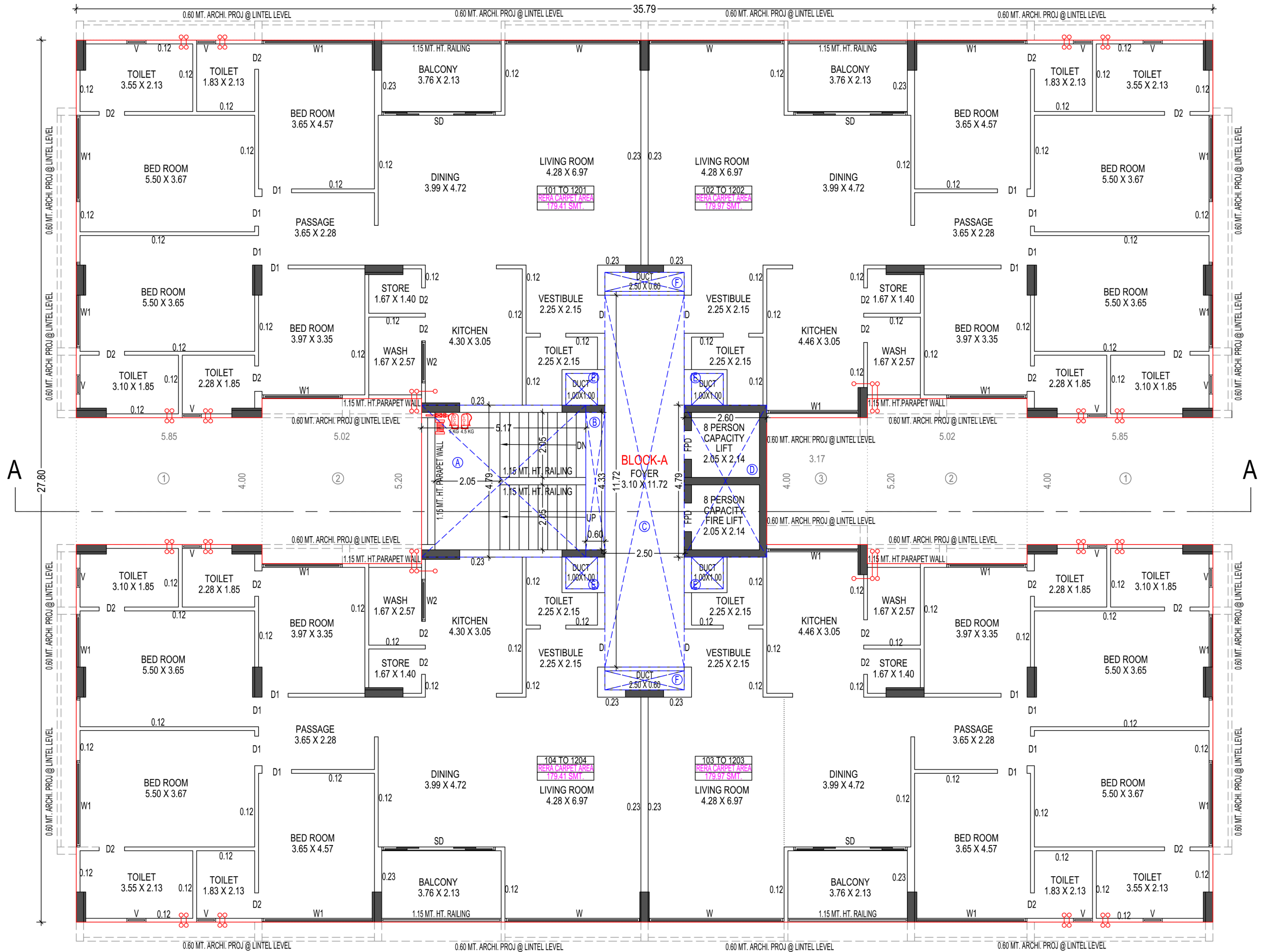
☎ 8799600755



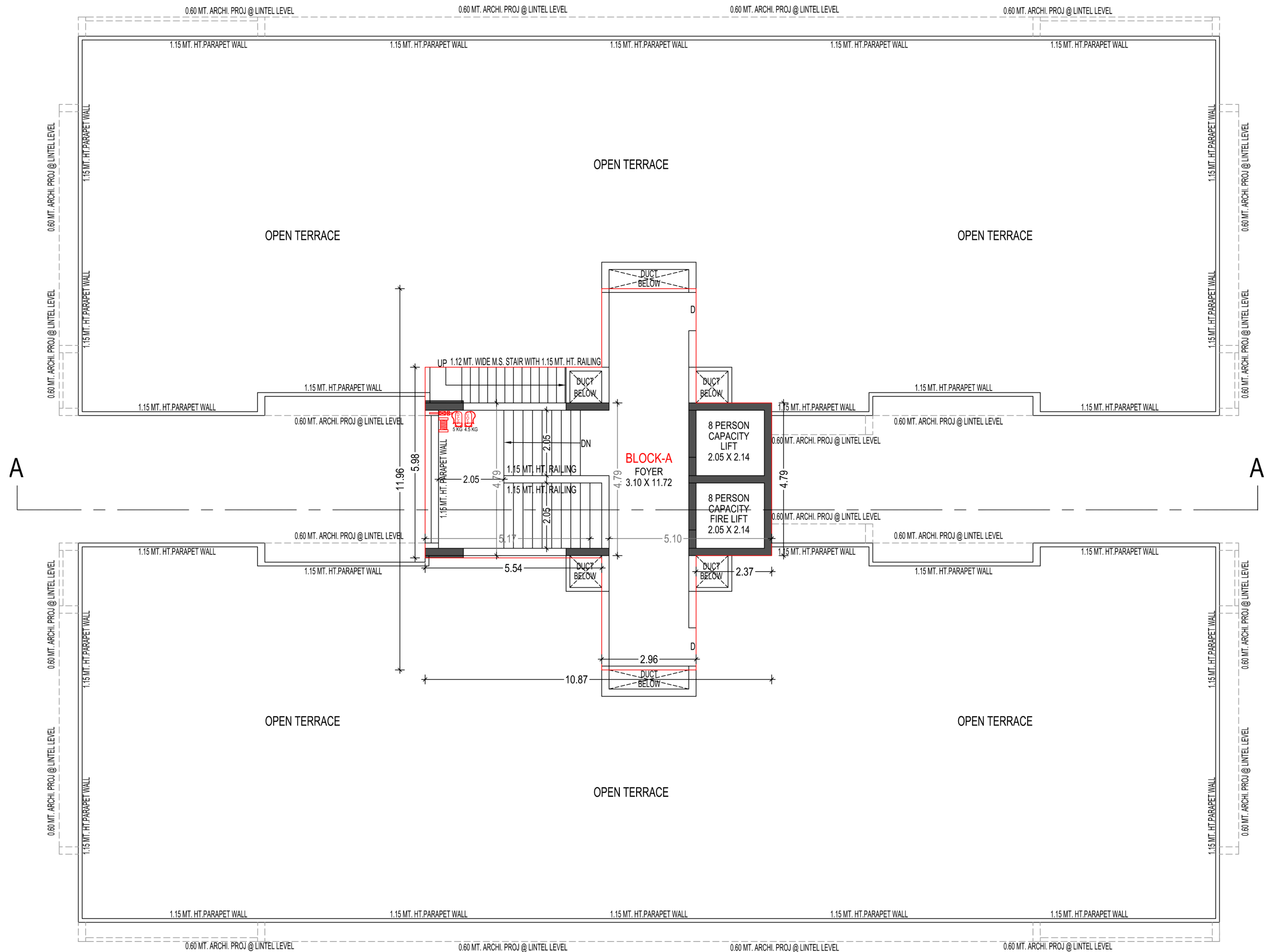
LAYOUT PLAN



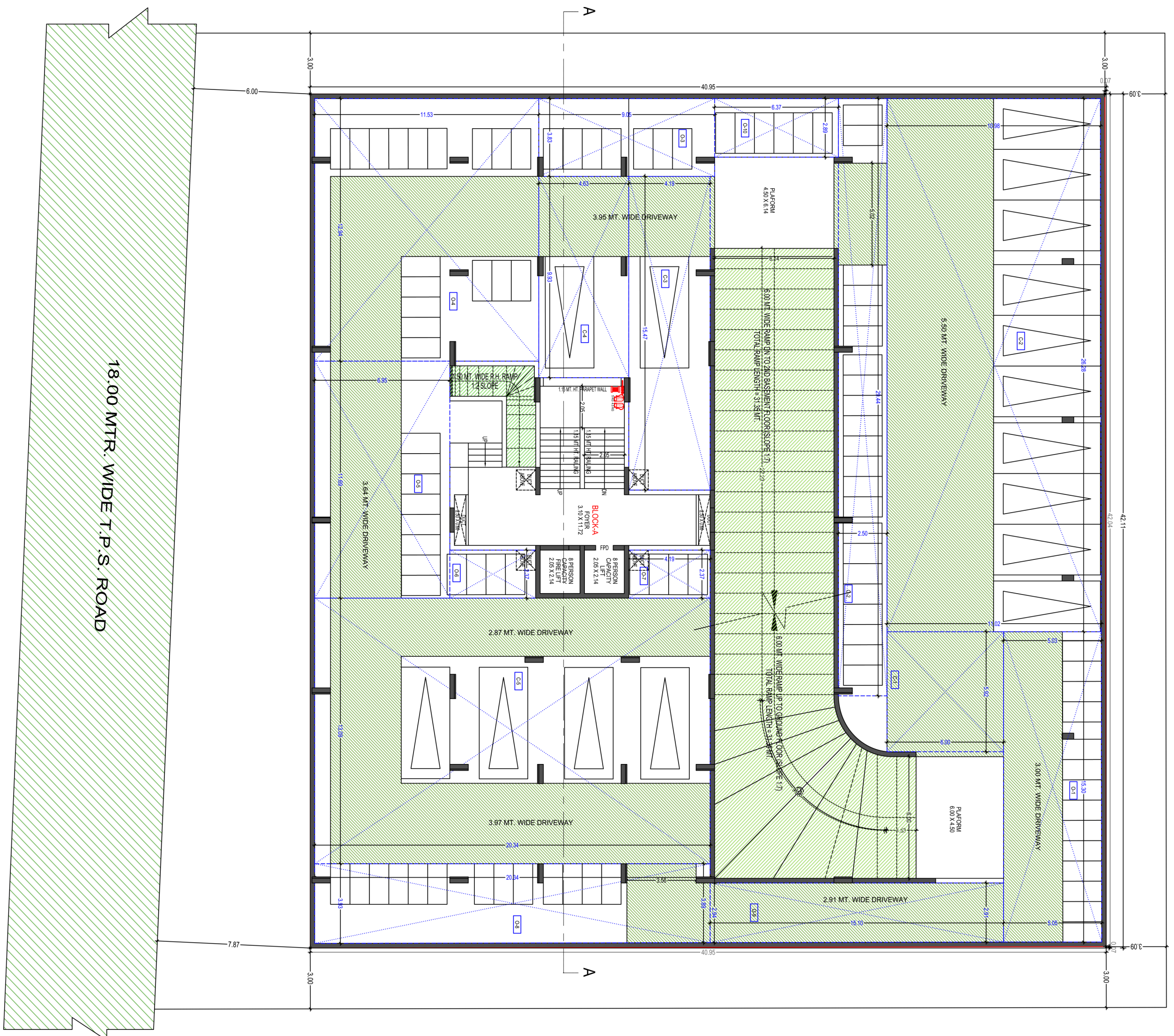
TYPICAL PLAN



TERRACE PLAN



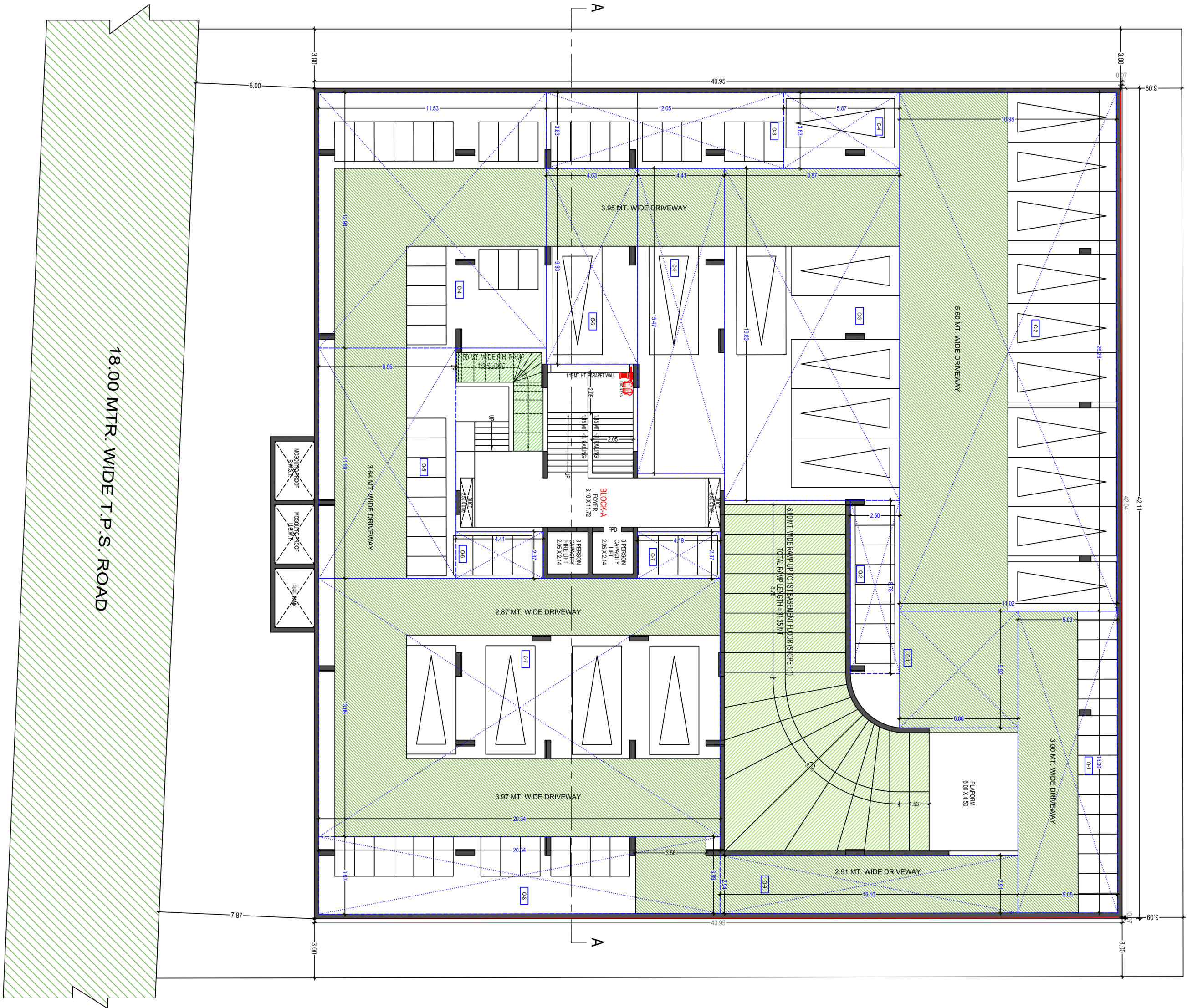
TERRACE FLOOR PLAN



18.00 MTR. WIDE T.P.S. ROAD

BASEMENT 1





BASEMENT 2

18.00 MTR. WIDE T.P.S. ROAD



WALL FINISH

- INTERNAL : SMOOTH FINISH MALA PLASTER WITH PUTTY
- EXTERNAL : DOUBLE COAT SAND FACED PLASTER OR TEXTURE FINISH.

FLOORING

- VITRIFIED TILES FLOORING IN ALL ROOM.

KITCHEN

- STANDING POLISHED NATURAL GRANITE KITCHEN PLATFORM WITH SINK & GLAZED TILES DADO ABOVE THE PLATFORM UP TO LINTEL LEVEL.

DOORS

- DECORATIVE MAIN DOOR HAVING LOCK OF REPUTED COMPANY.
- INTERNAL DOORS OF LAMINATED FLUSH DOORS OR COLOURED FLUSH DOOR.

WINDOWS

- ALUMINUM ANODIZED SECTION SLIDING WINDOWS WITH GLASS & STONE JAMBS.

TOILET

- CERAMIC TILES FLOORING IN ALL TOILETS, GLAZED TILES DADO UP TO LINTEL LEVEL.

PLUMBING

- CONCEALED PLUMBING OF GOOD QUALITY UPVC & CPVC PIPES, C.P. FITTINGS & SANITARY WARE OF REPUTED BRANDS.

ELECTRIFICATION

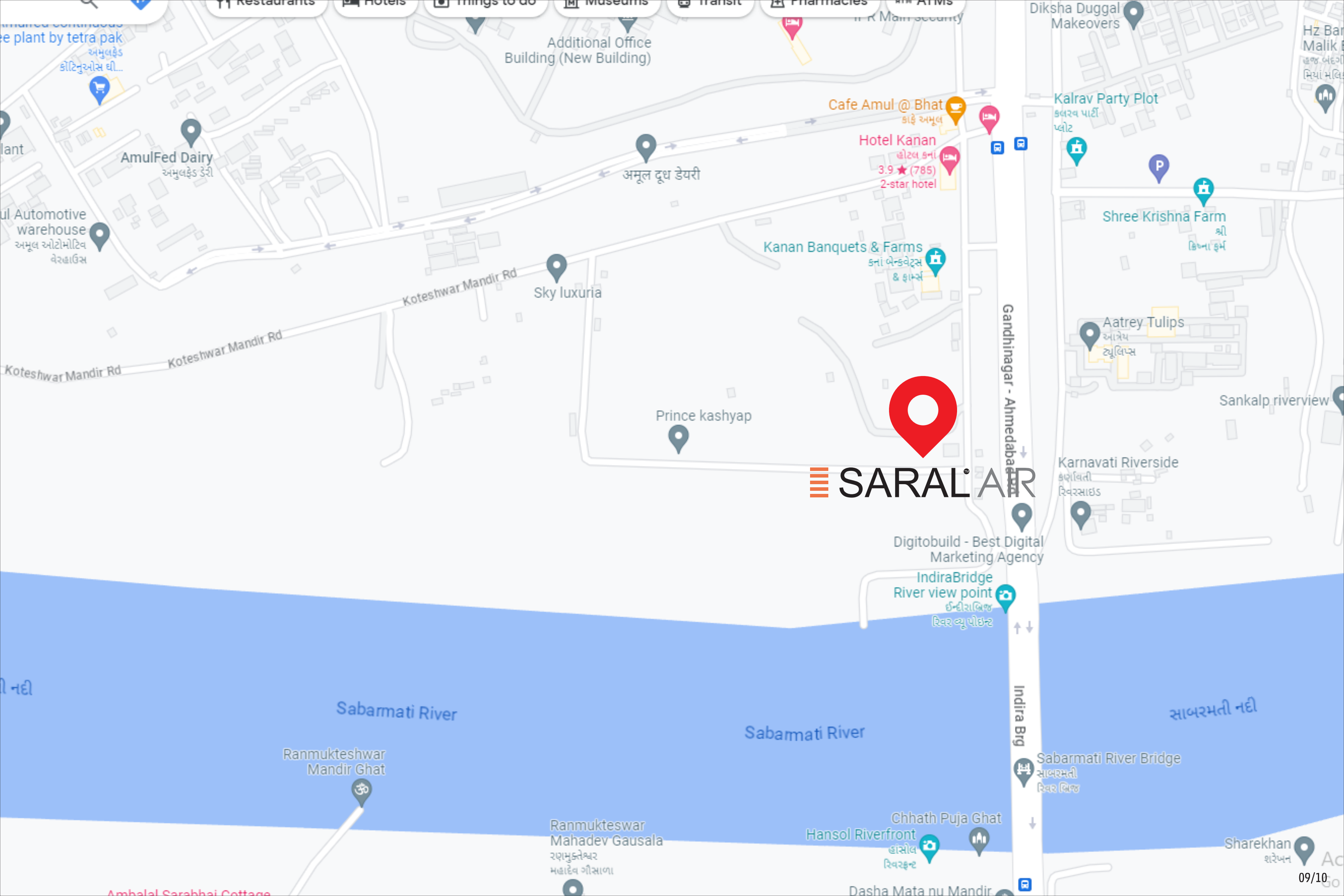
- SINGLE PHASE METER + MCB & ELCB TRIPPER WITH CONCEALED WIRING WITH ADEQUATE POINTS WITH QUALITY FITTINGS.

PAINT

- EXTERIOR PAINTING OF ACRYLIC PAINT.
- INTERNAL WALLS DOUBLE COAT PUTTY FINISH.

LIFTS

- FINE QUALITY FULLY AUTOMATIC LIFTS.



 SARAL AIR

SARAL AIR, NEAR KANAN FARMS TOWARDS THE RIVERFRONT,
BHAT, GANDHINAGAR

☎ 8799600755 ✉ info@saralinfrastucture.com

🌐 saralinfrastucture.com

DEVELOPED BY

**SARAL
BUILDCON**

ARCHITECT

APURVA AMIN
ARCHITECTS

STRUCTURE

SETU[®]
INFRASTRUCTURE

RERA REGISTER NO.

RERA WEBSITE : WWW.GUJRERA.GUJARAT.GOV.IN