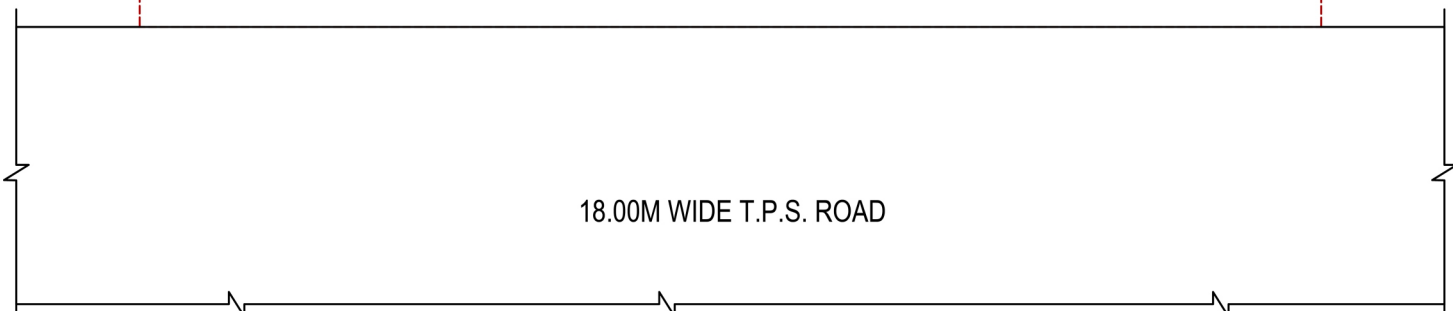
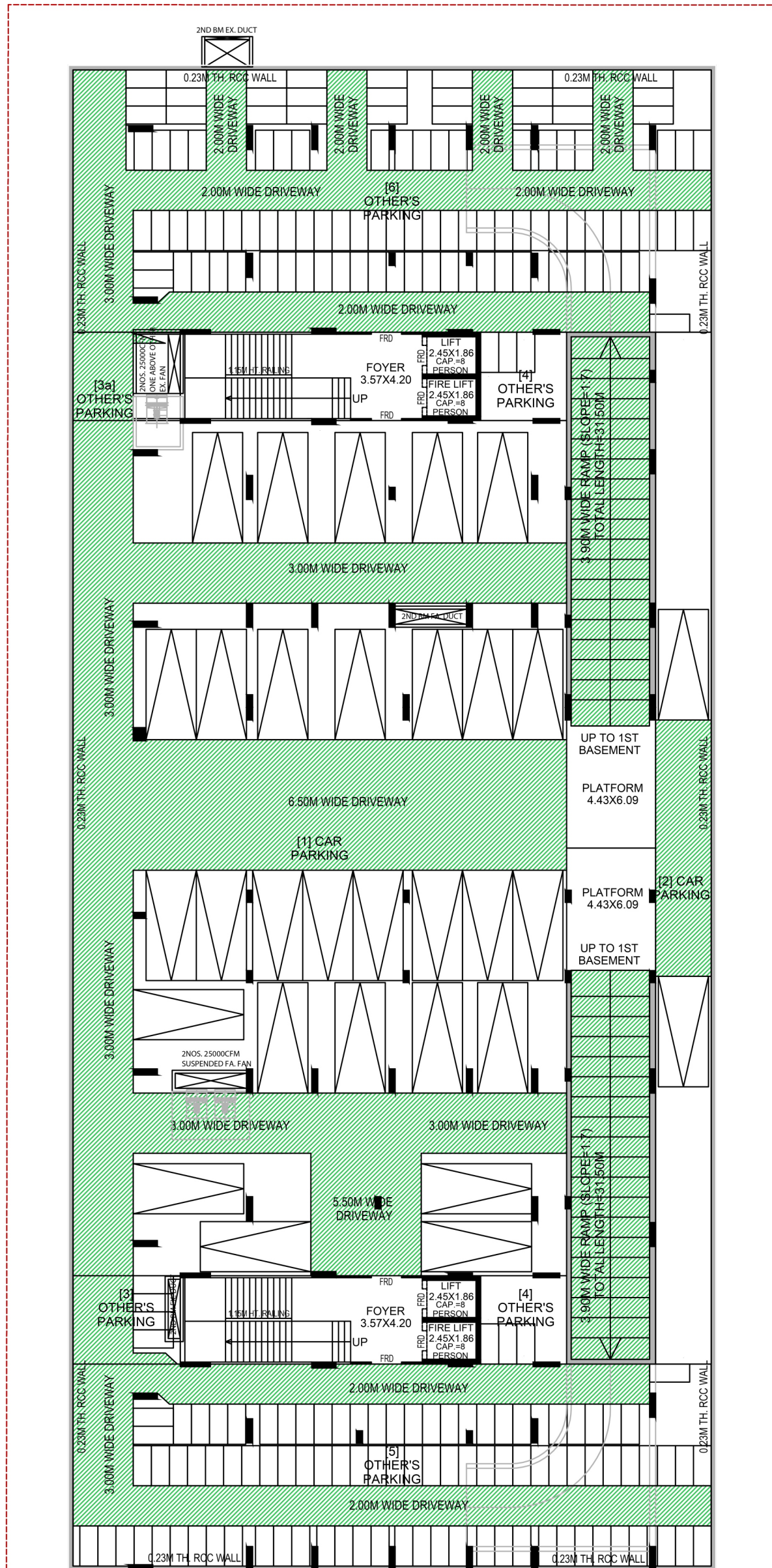


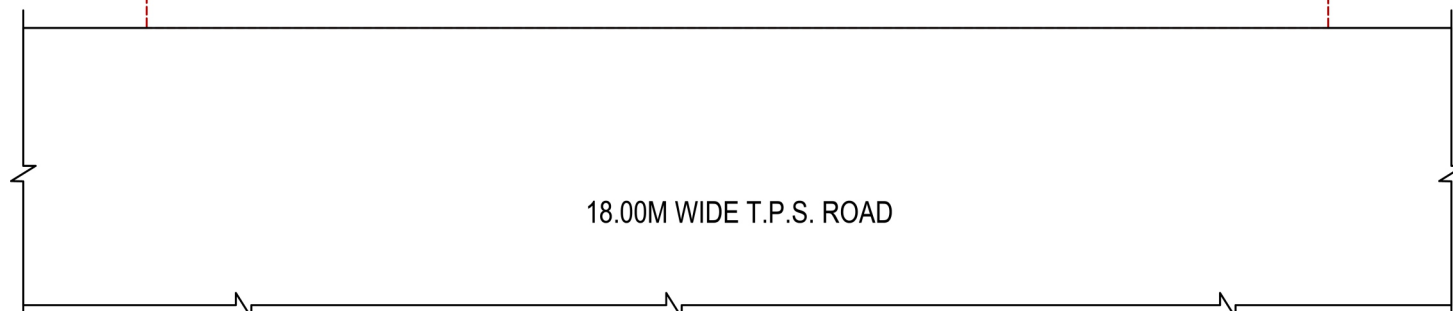
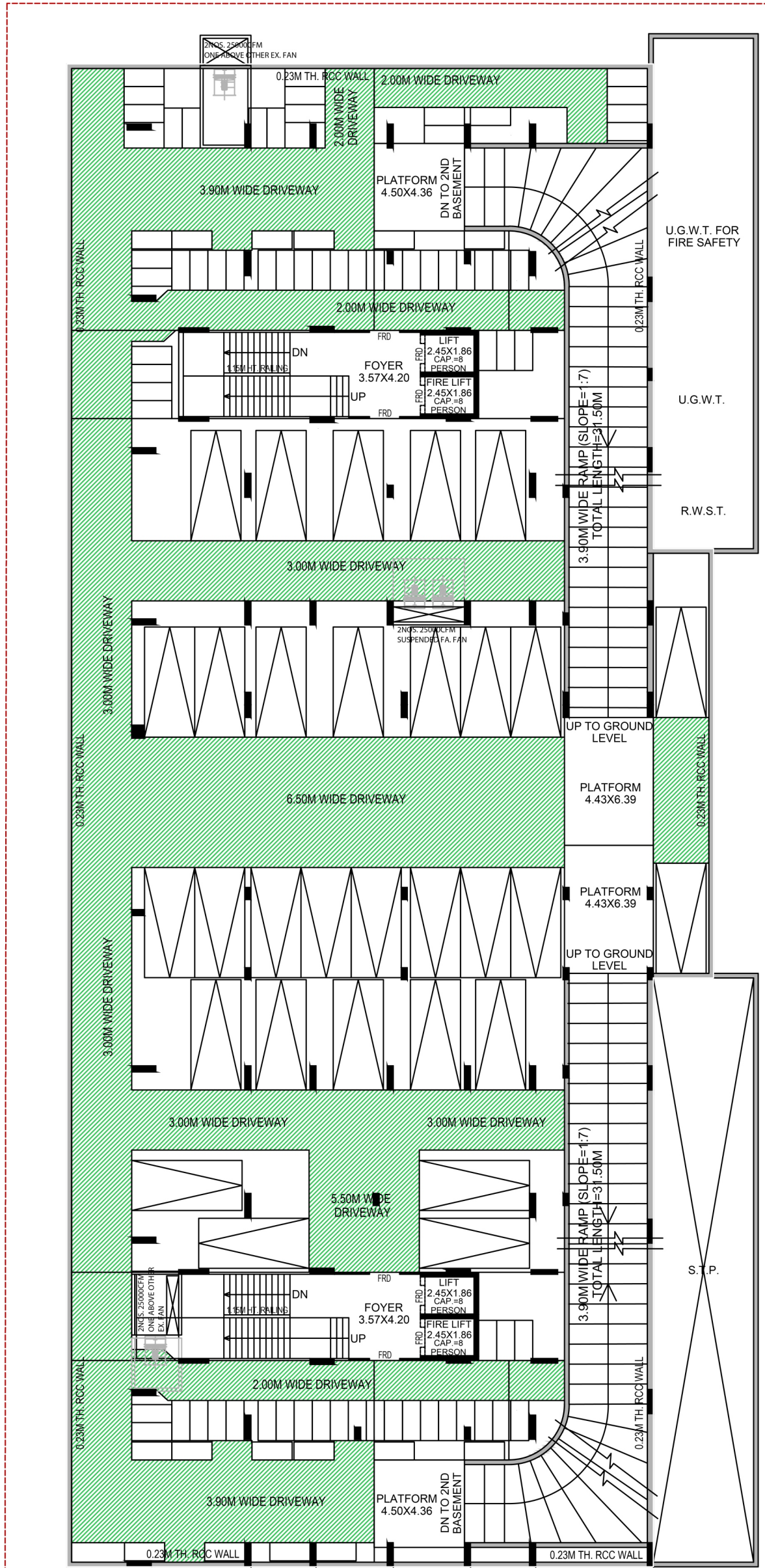
PRAYASAM
^ residency



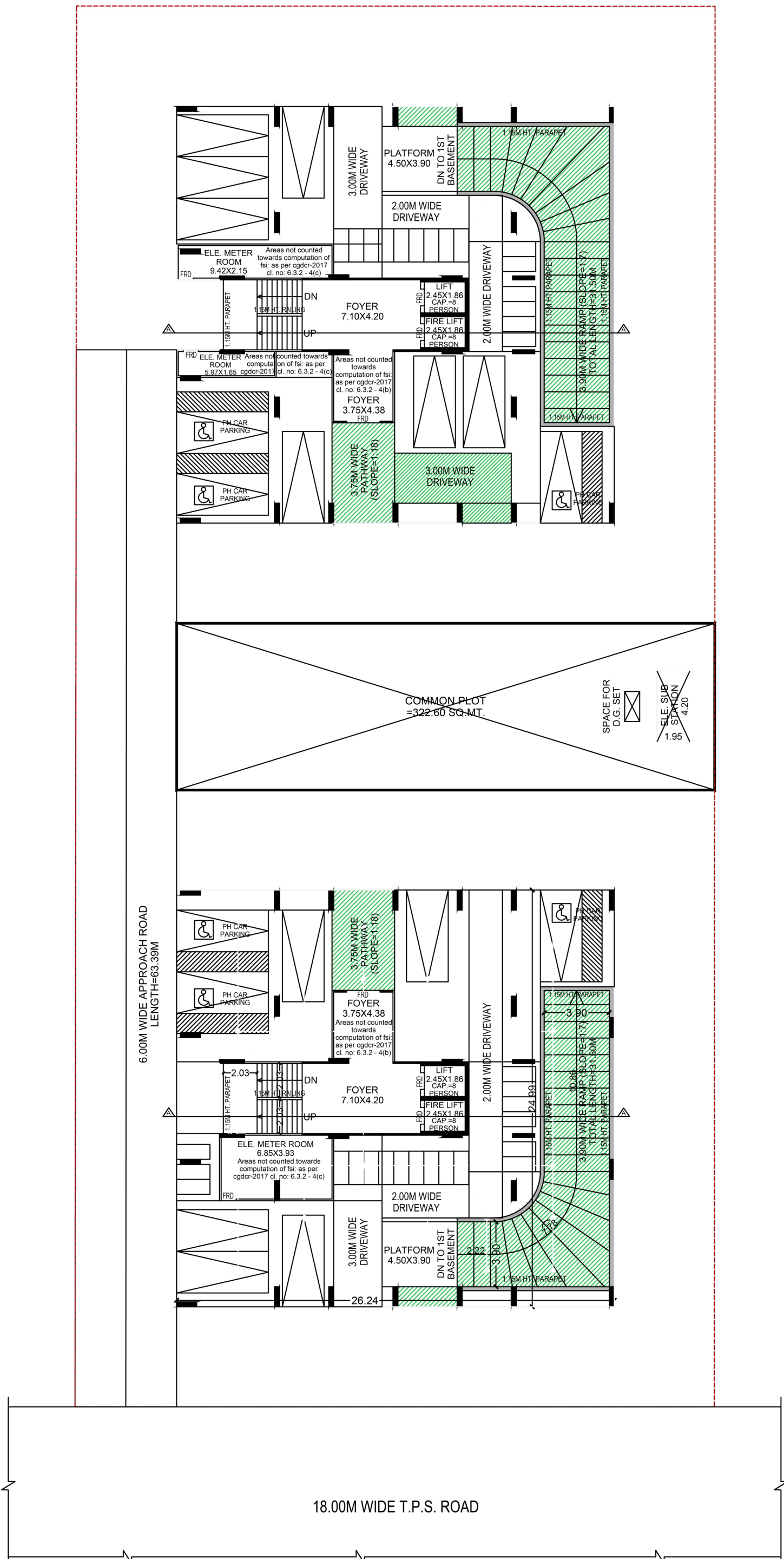
2ND BASEMENT PLAN



1ST BASEMENT PLAN



GROUND FLOOR PLAN



1ST FLOOR PLAN



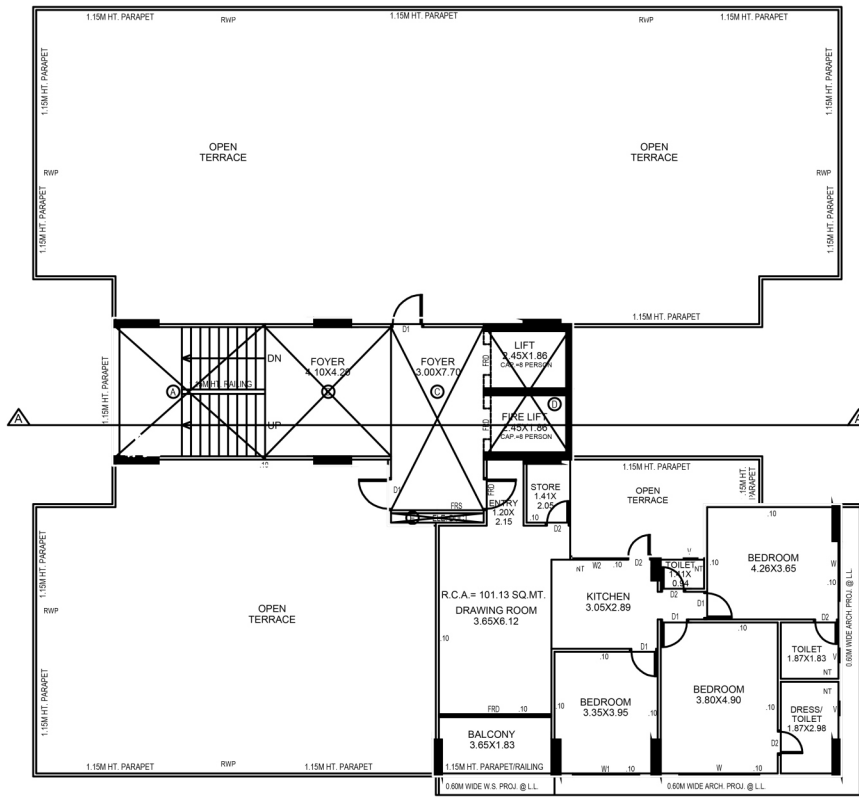
18.00M WIDE T.P.S. ROAD

2ND TO 5TH FLOOR PLAN



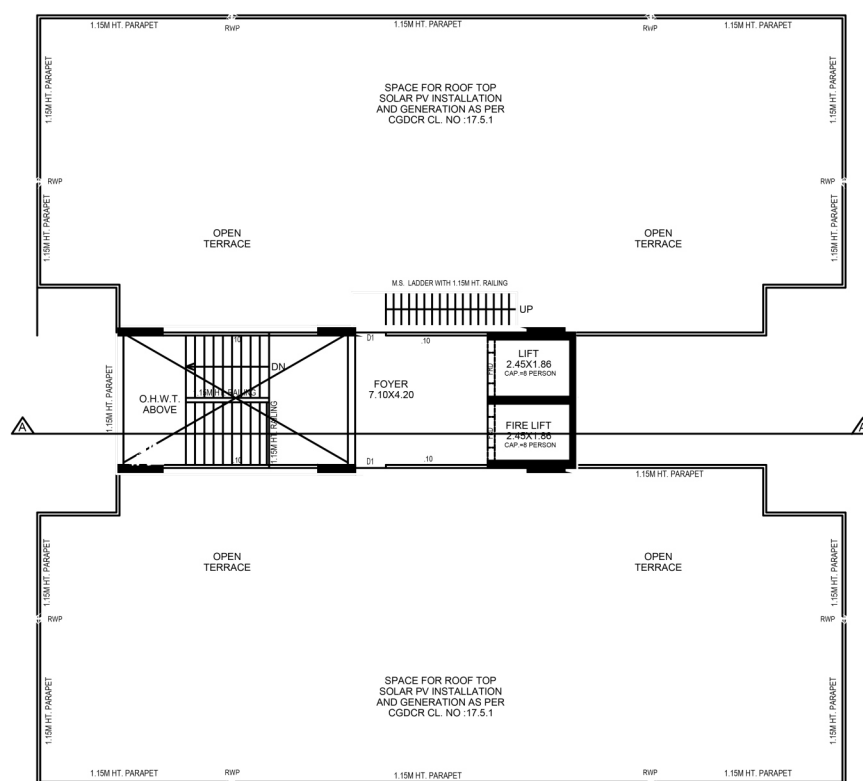
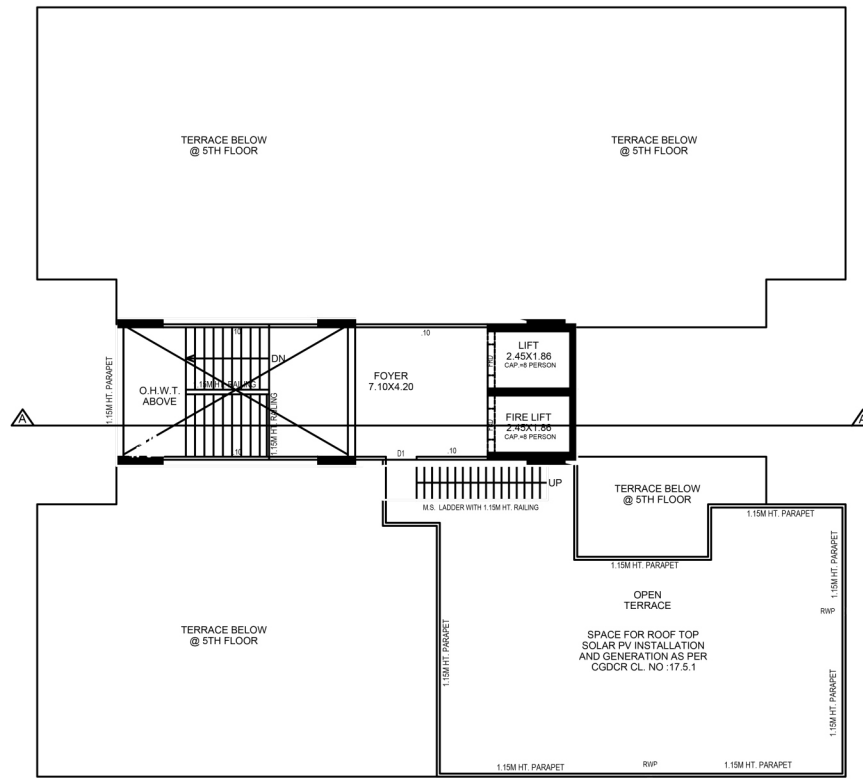
18.00M WIDE T.P.S. ROAD

6TH FLOOR PLAN



18.00M WIDE T.P.S. ROAD

TERRACE FLOOR PLAN



18.00M WIDE T.P.S. ROAD

SPECIFICATION

STRUCTURE

- R.C.C. Moment frame structure, seismically resistant adhering to IS-CODE guidelines.

FLOORING

- Vitrified tiles flooring.

KITCHEN

- Granite platform with Stainless Steel sink.
 - Glazed tiles dado up to lintel level.
- Provision for R. O. point with required electrical & plumbing point.

BATHROOMS/TOILET

- Anti-skid flooring.
 - Glazed tiles dado up to lintel level.
- Quality Bathroom accessories and fittings.

DOORS & WINDOWS

- Laminated flush doors with MS frame.
- Premium quality aluminium section.

WASH AREA

- Anti-skid flooring.
- Provision for washing machine fittings with electrical and plumbing point.

MECHANICAL ELECTRICAL & PLUMBING

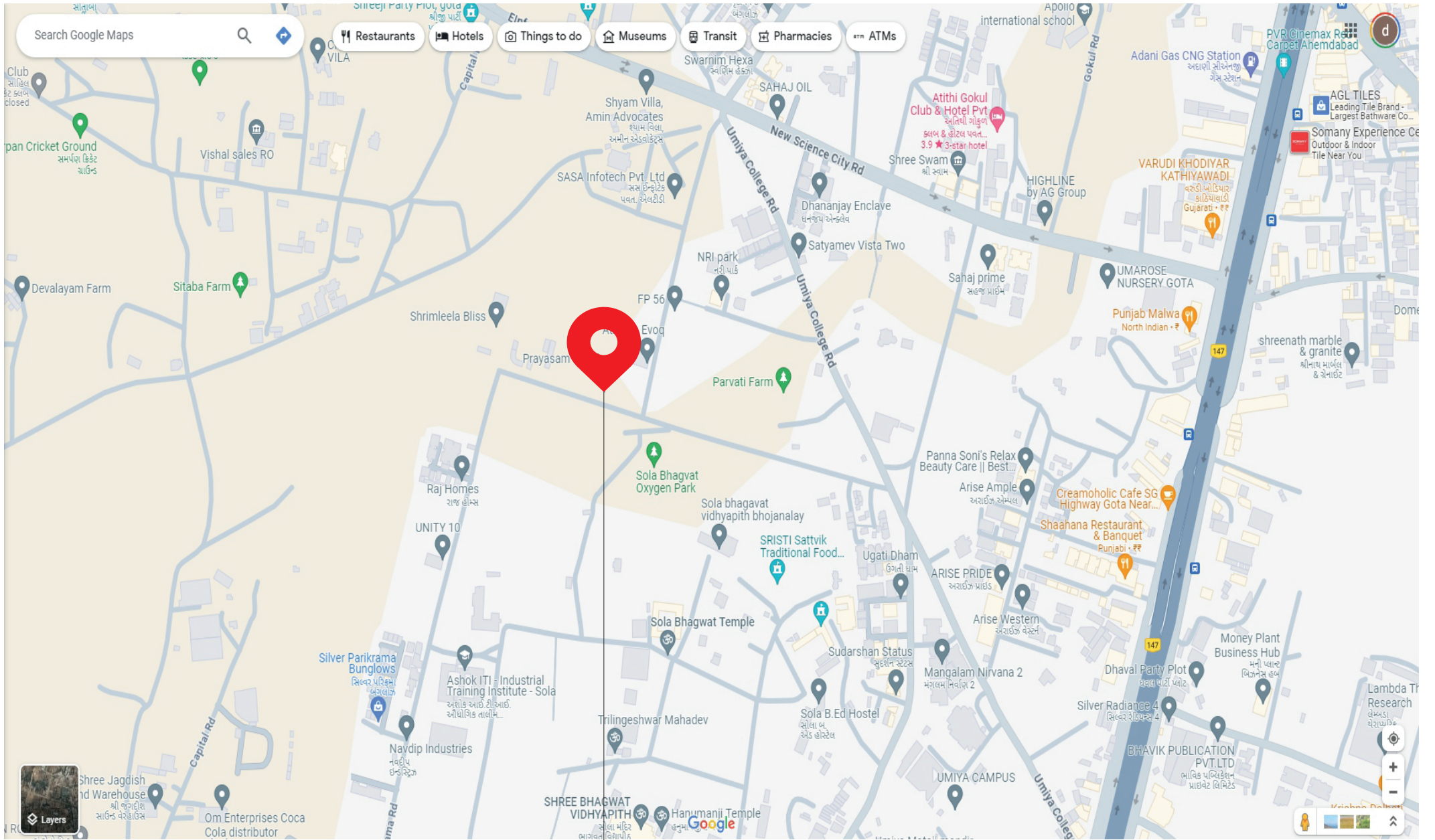
- Concealed copper wiring with M.C.B / E.L.C.B.
- Plenty of electrical sockets with quality switches.
- Quality U.P.V.C. pipes for regular water supply.
 - Quality C.P.V.C. pipes for hot water supply.
 - Quality P.V.C pipe for drain.

TERRACE

- Open terrace with leak proof floor.

PLASTER & PAINTS

- Inside : Single coat mala plaster with wall putty finish.
- Outside : Double coat mala plaster with texture or exterior paint for attractive elevation.



PRAYASAM

residency

PRAYASAM RESIDENCY, B/H. ATLANTIS EVOQ,NR.
UMIYA CIRCLE, NEW SCIENCE CITY ROAD,
AHMEDABAD 380060

☎ 8799581590

PROJECT BY
**PRAYASAM LAND
DEVELOPERS**

ARCHITECT
MANSI SHAH

STRUCTURE
ACHAL PARIKH

RERA REGISTER NO.

RERA WEBSITE : WWW.GUJRERA.GUJARAT.GOV.IN