



A PARADISE FOR LIFETIME

3 Decades Of Construction Excellence

Pratik Group has completed 28 years in the field of real estate. It was founded by Mr. Vasant Manji Bhadra with the clear vision to “Transform the way people perceive quality” in the real estate industry. Over the intervening years this vision continues to be the bedrock of all endeavours. Since its inception Pratik Group is built on rock solid values, benchmark quality standards, uncompromising business ethos, focused customer centric approach, robust engineering, in- house Research & Development & transparency in all spheres of conducting business, which have contributed in making Pratik Group a preferred real estate brand in Navi Mumbai. In the past 28 years since its inception, Pratik Group has completed 21 + residential projects, That includes Pratik Harmony-Rodpali, Pratik Gardens-Kamothe, Pratik Gems-Kamothe, Pratik Heights-Ghansoli, Pratik Corner-Airoli and many more

ENJOY
REAL VALUE
WITH US



Introducing you to a life you've aspired for, and world-class design you've always yearned for. You've lived your version of a lavish life, now experience the real deal...

at 'Pratik Paradise'. With an edge over the rest, and centrally located in the heart of Mumbai. This premium project by Pratik Developers is adorned with every necessary convenience of the city life. Tasteful and luxurious 2 BHK apartments, with distinctive specifications, convenient roadways, railways, proximity of institutions and entertainment hubs, lush green corners, and a Great list of amenities. While you experience the luxury of exclusivity inside Pratik Paradise, the exterior is bound to attract attention and grab eyeballs of the passers by and onlookers.



2 BHK

With Splendid Elevation
of G+18 Storeys



YOGA

GYM

*stock image





CONFERENCE | SOCIETY OFFICE

MULTI ACTIVITY GARDEN

*stock image





CCTV SURVEILLANCE

CAR LIFTS

*stock image



Quality That Matters



Earthquake Resistant
RCC Framed Structure



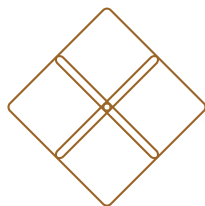
Granite door
frame to kitchen &
toilet doors



Granite window frame
to all windows



Anodized aluminum window
frame and branded glass



Granito (Marbonite)
flooring in all rooms



Granite kitchen
platform with
stainless steel sink



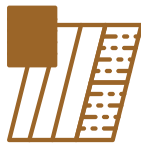
Concealed Copper wiring with
reputed brand modular switches



Concealed plumbing with reputed make fittings



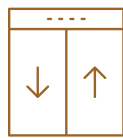
High quality Paint to all Rooms



POP Finished Wall & amp, Ceiling for all Rooms



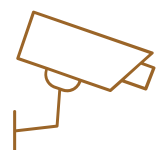
High quality Paint to building's external walls



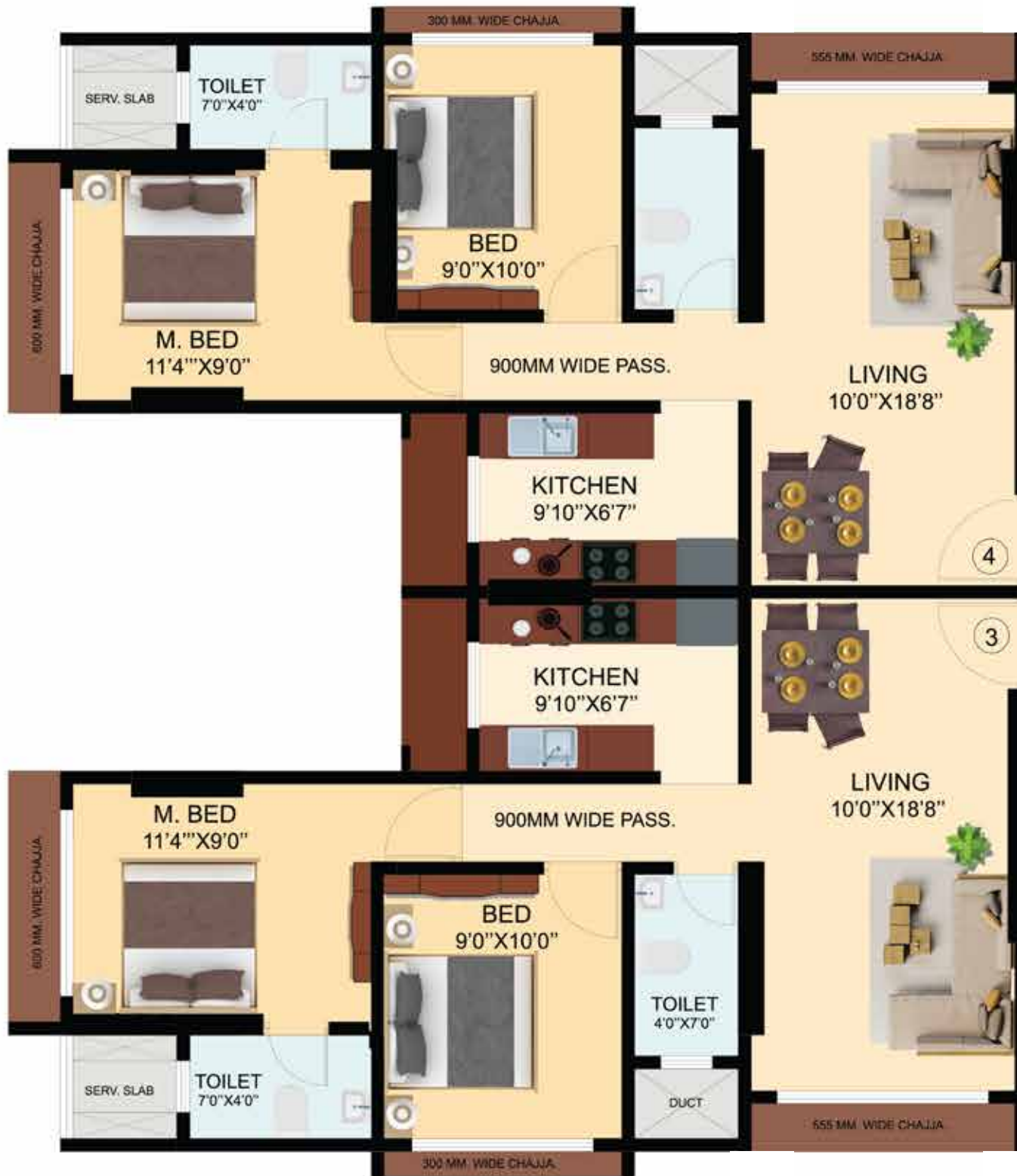
Power backup for elevator & common lights.



Intercom Connectivity

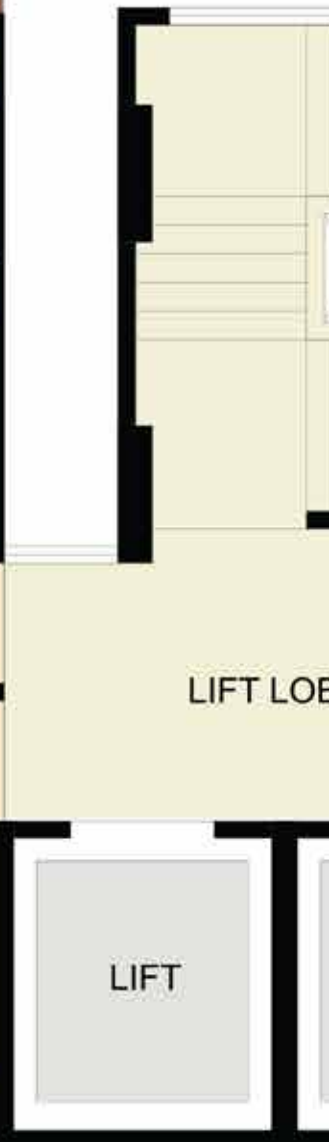


Surveillance Camera





Common Floor Plan





15th Floor Plan





18th Floor Plan



5th Floor Plan



Ground Floor Plan





Every attribute of interiors at Pratik Paradise, is positioned in a way that proves proficient and functional. You enjoy optimum utilisation of demanding clients that finds a true expression here. Provision for modular kitchen, spacious bed rooms and inviting family areas set a welcoming tone. Here, perfect care is taken so that no space is left idle, and is adhering to the vision of utility-based design.



Western Exp. Highway

Nahur

Eastern Exp. Highway

Mumbai-Pune Highway

LLT

Powai Lake

Poddar International School

Meluha The Fern

R City Mall

Vikhroli

Kanjurmarg

Bhandup

Fortis Hospital

D Mar



PRATIK PARADISE



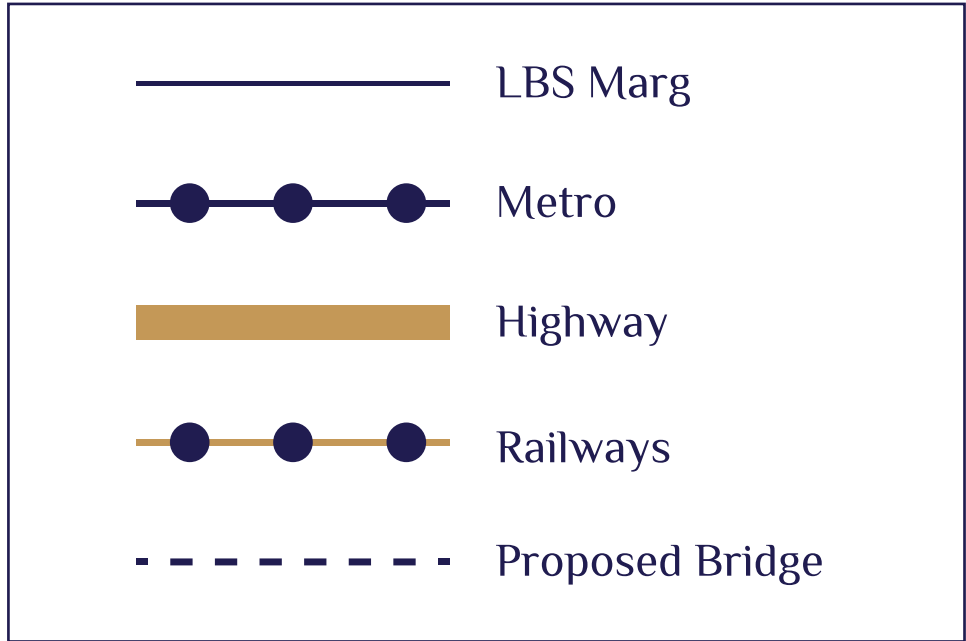
Airport

Metro

LBS Marg

Kurla

Chembur



Proposed Kanjurmarg - Ghansoli Bridge



Malls
3.5 km



Schools
300 m



Airport
11 km



Highways
1 km



Bank
0.5 km



Hospital
4 km



Hotel/Restaurant
4 km



Railway
900 m



LEGACY IN
THE
MAKING.

~ COMPLETED PROJECTS ~



TIMES GROUP



*artistic impression

Pratik Garden (Kamothe)



Pratik Harmony (Roadpali)



Pratik Corner (Airoli)



Pratik Heights (Ghansoli)



Pratik Gems (Kamothe)



**PRATIK
DEVELOPERS**



MAHA Rera No: P51800018598

Office Address : K-49, A.P.M.C, Phase - 2, Market - 1, Sector 19, Vashi,
Navi Mumbai, Maharashtra 400 703

Call : 022 2766 7804 | 022 2780 1034 | Mail : bhadravasant@yahoo.co.in

Site Address: CTS 784, 785 & 775, Datar colony, Near RADAV College,
Bhandup East, Mumbai.

Architect : M/s Tryfort Architects | Rcc Consultants : R.C. Tipnis |

Legal Advisor: Adv. Dinesh Chandra

Contact - +91 98203 01630 | 9892562965 | 93223 44686

The amenities, specifications, facilities, surrounding infrastructure, images and features shown and/or mentioned and the image renders used are purely indicative of the envisaged development and for representational purposes only. Photographs of interiors, surroundings or location are digitally enhanced unless otherwise mentioned. Products, features, light fittings, pictures, images, etc. shown as illustrations are for reference only. The colours, shades of walls, tiles etc. shown in the images are for the purpose of representation only and may vary upon actual construction. All dimensions mentioned in the drawings may vary/differ due to construction contingencies and site conditions. The Jodi flat layouts are indicative and only an artistic representation for purpose and with intent to help better understand and visualise the combinations that are possible. The development of the project shall be in accordance with approvals granted by concerned authorities from time to time