

---

---

# ORACLE SUNRISE

---

---



**VIJAYA BHASKARA  
CONSTRUCTIONS**

GROWING WITH CARE



Oracle  
Sunrise



VBC oracle sunrise - 2 & 3 bhk luxury apartments on Hosa Road. The sunrise here mirrors the opulence of regal lifestyle and the breeze whispers the comforting melodies.



VBC takes great pride in delivering international quality standards to its customers. Celebrate life crafted with exquisite precision and care. The living spaces are carefully designed to please your aesthetic senses. Sit back and relax in that favourite corner of your home-built with the magical aura of opulence.



# MASTER PLAN



## GENERAL/OUTDOOR AMENITIES

- 1 ENTRY/EXIT
- 2 POOL
- 3 GYM
- 4 INDOOR GAMES
- 5 CHILDREN'S PLAY AREA
- 6 MULTI-PURPOSE HALL
- 7 PLAY COURT
- 8 JOGGING TRACK
- 9 ELECTRICAL TRANSFORMER
- 10 BLOCK A
- 11 BLOCK B



# SPECIFICATIONS

## STRUCTURE

- Stilt Floor + 4 Story

## CAR PARKING

- Covered parking in Stilt Levels

## FOYER/LIVING/DINING

- Vitrified / Ceramic tile flooring and skirting
- Tractor emulsion paint for walls & ceiling

## BEDROOMS

- Vitrified tile flooring and skirting
- Tractor emulsion paint for walls & ceiling

## BATHROOM

- Ceramic tile flooring
- Ceramic wall tiling up to ceiling

## KITCHEN

- Ceramic tile flooring
- Tractor emulsion paint for ceiling

## BALCONIES/UTILITIES

- Ceramic tile flooring and skirting
- Tractor emulsion paint for ceiling/false ceiling as per design
- All walls painted in textured paint

## STAIRCASE

- Concrete treads & risers
- Textured paint for walls
- Tractor emulsion paint for ceiling
- MS handrail

## COMMON AREAS

- Ceramic tile/vitrified tile/granite flooring
- Tractor emulsion paint for ceiling/false ceiling as per design
- Granite coping for parapet/MS handrail

## JOINERY

### MAIN DOOR/ BEDROOM DOORS

- Frame - timber
- Architrave - timber
- Shutters - with both sides HDF skin

### BATHROOM DOORS

- Frame - timber
  - Architrave - timber
  - Shutters - with both sides HDF and inside laminate
- All other external doors to be manufactured in aluminium/  
UPVC extruded frames and shutter with panels  
Aluminium glazed windows

## LIFTS

- 3Lifts

## LANDSCAPE

- Designer landscaping

## COMMON FACILITIES

- Swimming pool, Gym, Multipurpose hall, Indoor games,
- Play court, Jogging track

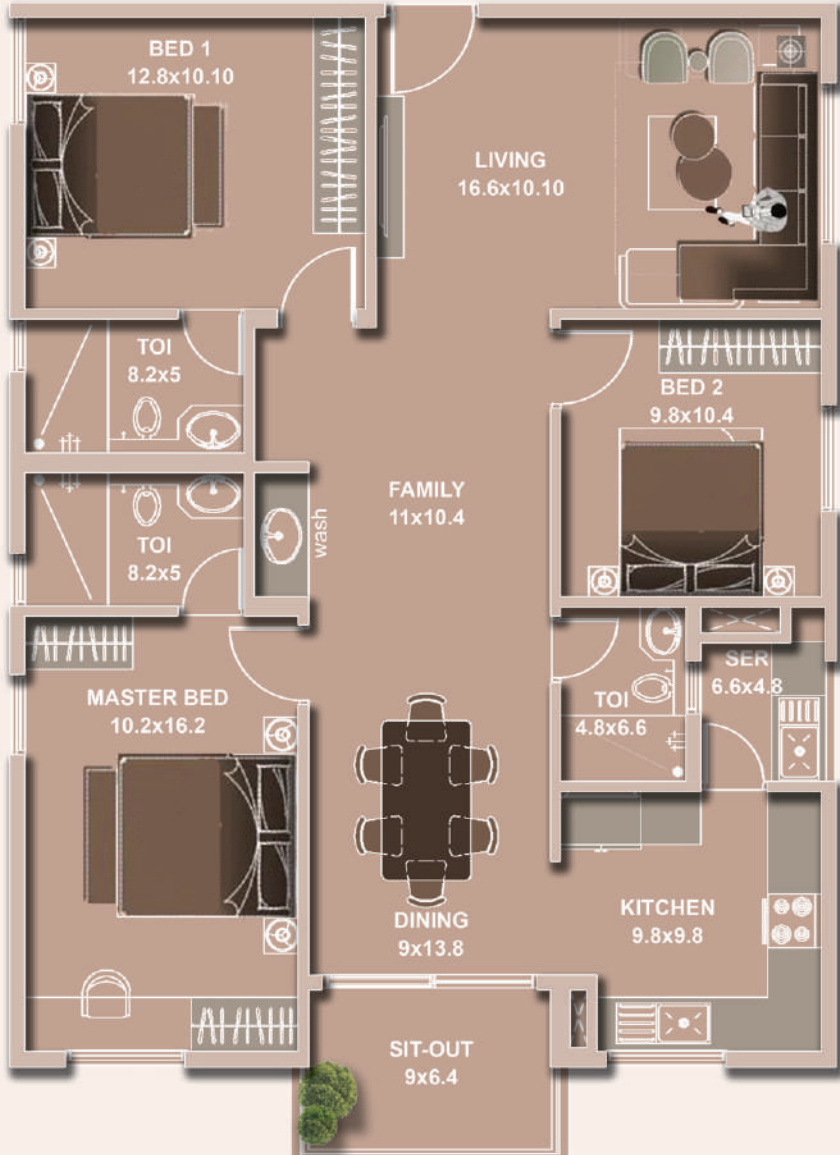
## PLUMBING

- Sanitary fixtures of reputed make in all bathrooms
- Chromium plated fittings in all bathrooms

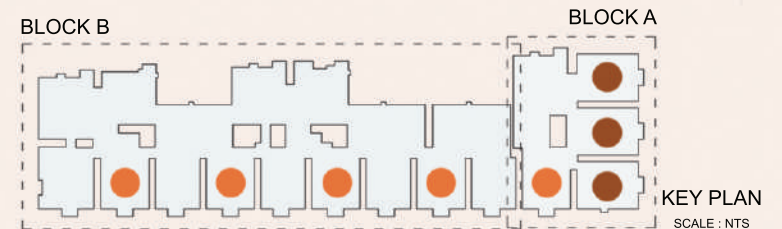
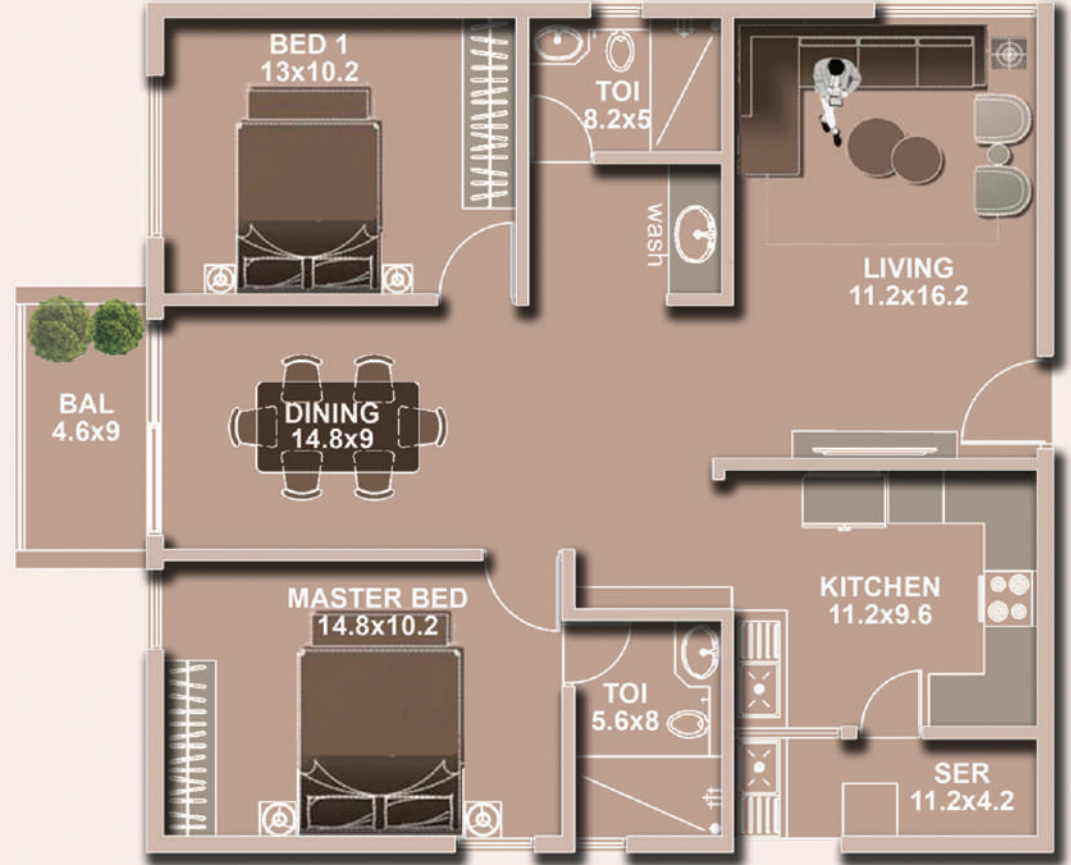
## ELECTRICAL

- Split AC provision in master bedroom and living
- BESCOM supply : 5 KW single phase supply
- Standby power of 1 KW for apartments and 100% power backup for common area facilities
- Television points in living & master bedroom
- Telephone points in living & master bedroom
- Intercom facility from security cabin to each apartment - only point

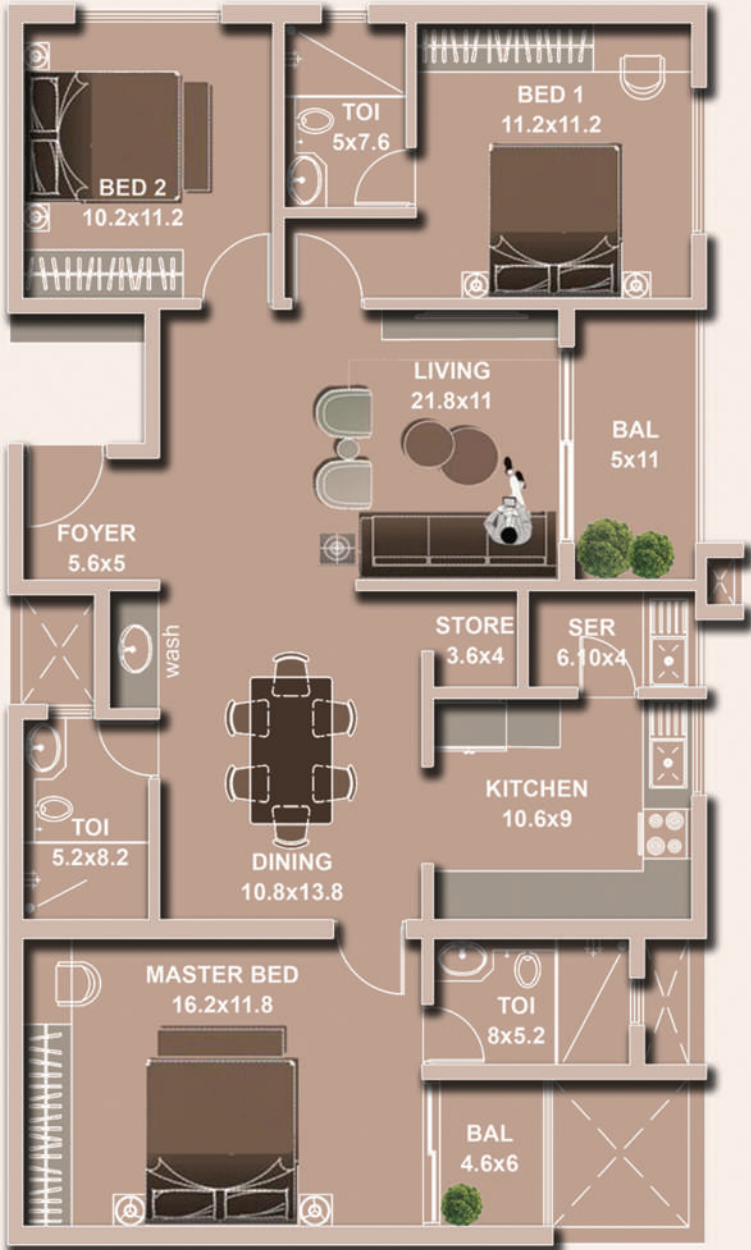
● FLOOR PLAN  
**3BHK**  
**SBA -1541 SqFt**  
**CARPET AREA - 1162 SqFt**



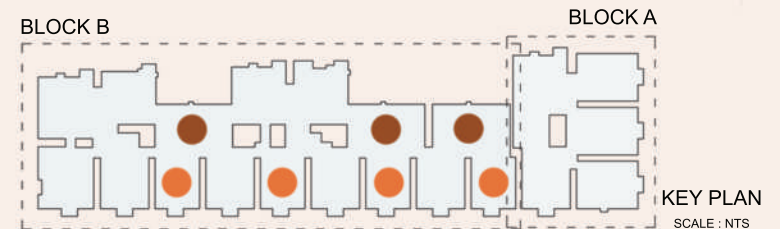
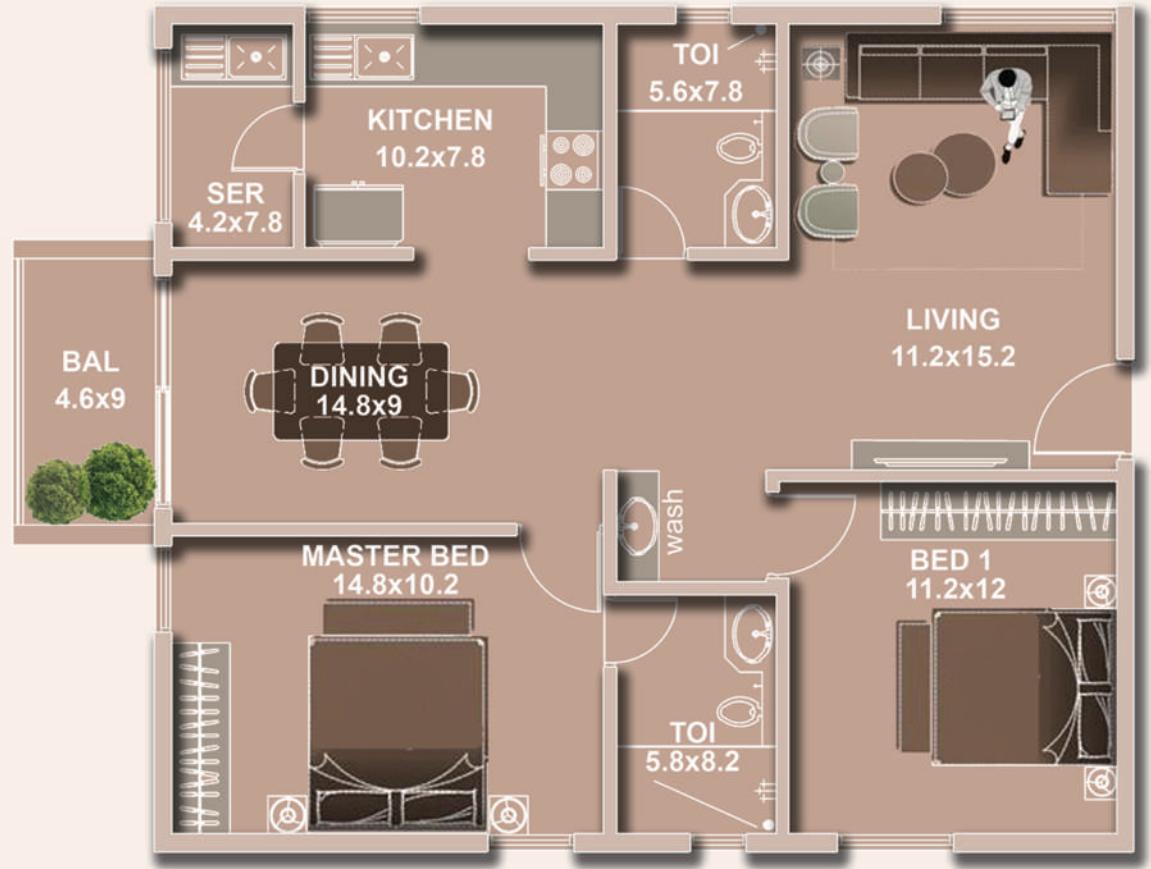
● FLOOR PLAN  
**2BHK**  
**SBA -1332 SqFt**  
**CARPET AREA - 1005 SqFt**



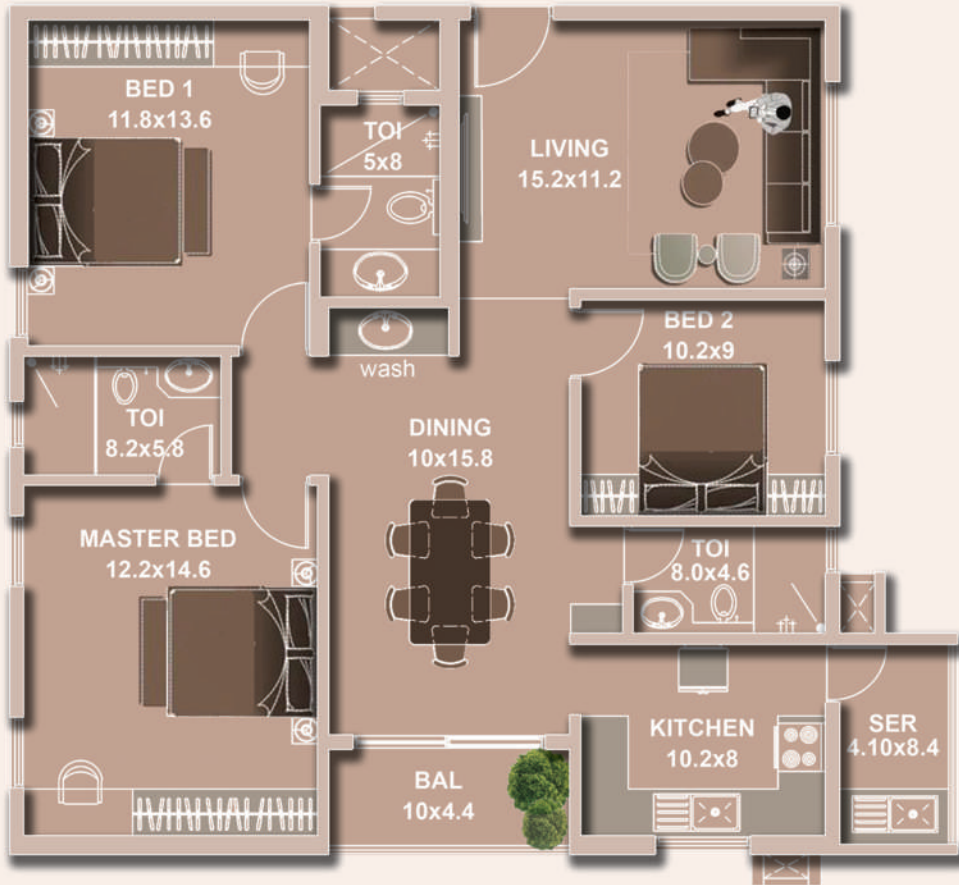
● FLOOR PLAN  
3BHK  
SBA -1589 SqFt  
CARPET AREA - 1199 SqFt



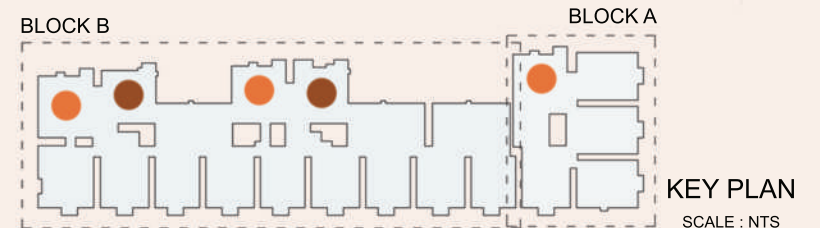
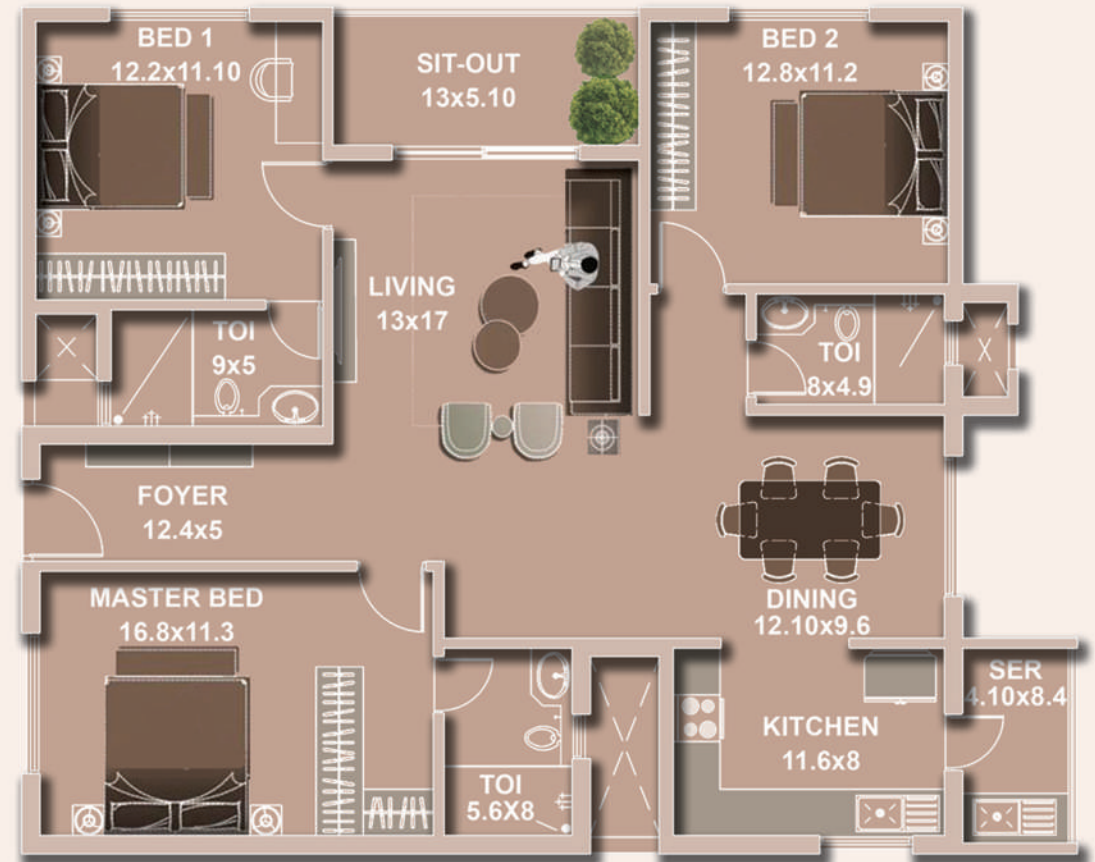
● FLOOR PLAN  
2BHK  
SBA -1232 SqFt  
CARPET AREA - 930 SqFt



● FLOOR PLAN  
3BHK  
SBA -1495 SqFt  
CARPET AREA - 1128 SqFt



● FLOOR PLAN  
3BHK  
SBA -1622 SqFt  
CARPET AREA - 1224 SqFt





# LOCATION MAP



## Educational Institutes

Orchids the International School  
Cambridge School  
Notre Dame Academy  
VIBGYOR high School  
PES University  
Amrita University

## Business Hubs

Infosys  
Biocon  
Wipra  
Behive  
Hustle hub  
Electronic City

## Hospitals

Apollo Hospital  
Manipal Hospital  
Narayana Hrudayalaya  
Spring Leaf Hospital

## Fun and Entertainment

Play arena  
Play factory  
HSR Layout  
Sarjapur

## Contact

email- [marketing@vbcgroup.in](mailto:marketing@vbcgroup.in)

website- [www.vbcgroup.in](http://www.vbcgroup.in)

Ph - 9900928388