



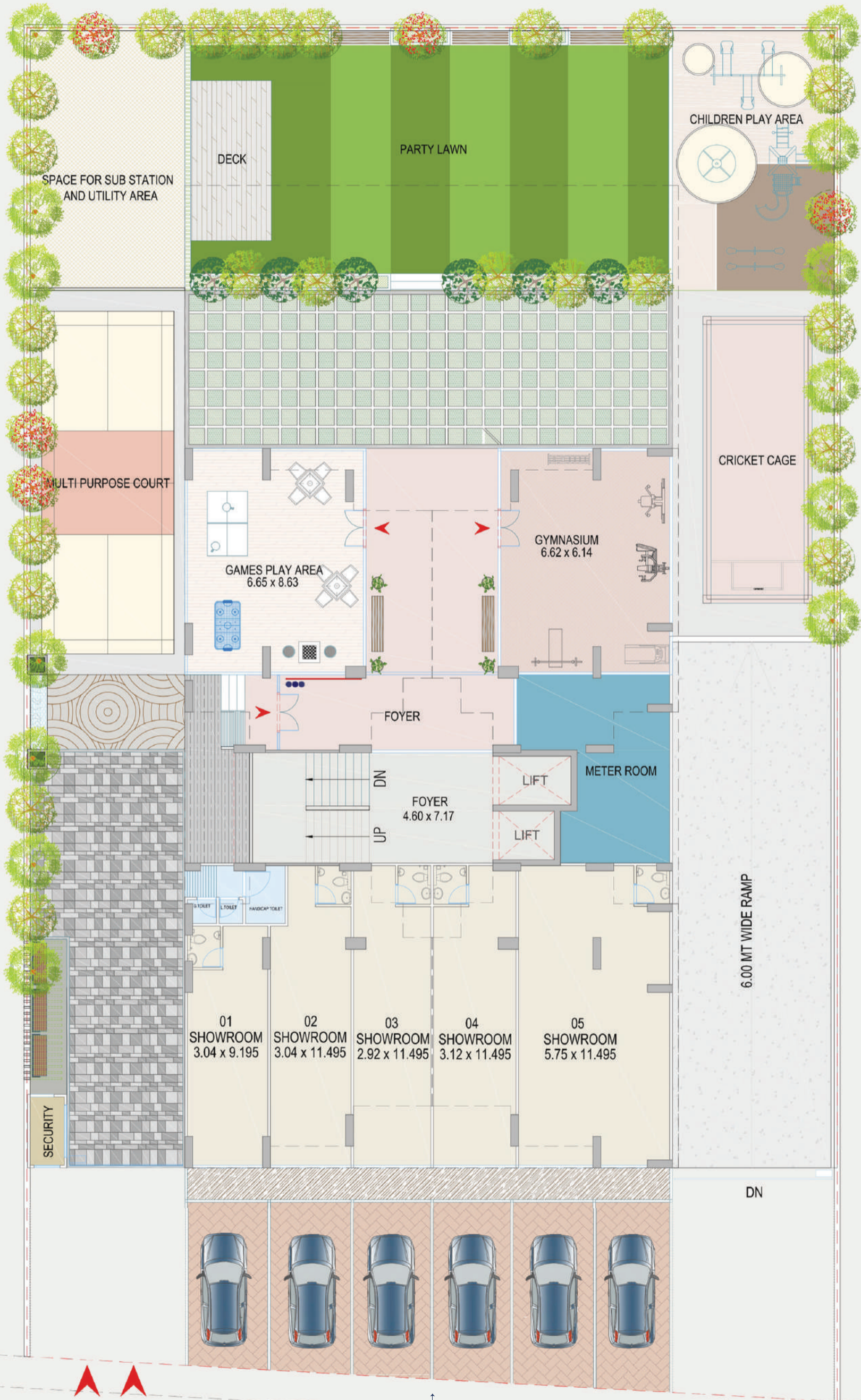
A feeling called

— — — — —  
— — — — —  
**HOME**



THE PORTAL TO A  
**ROYAL REALM.**

# GROUND FLOOR PLAN



36.00 MT WIDE ROAD

Note : All Dimensions are in sq mtr

# FIRST FLOOR PLAN



Note : All Dimensions are in sq mtr

# TYPICAL FLOOR PLAN



Note : All Dimensions are in sq mtr

# 3BHK-A UNIT



Note : All Dimensions are in sq mtr

# 3BHK-B UNIT







# SPECIFICATION

## FLOORING

- ✓ Living/Dining/Kitchen - 800 X 800 mm vitrified tiles
- ✓ Bedroom - 600 X 600 mm vitrified tiles



## KITCHEN

- ✓ Vitrified tiles, granite platform with S.S. sink
- ✓ Kota stone floor in wash area



## BATHROOMS/TOILET

- ✓ Ceramic tiles flooring in all toilets,  
Glazed tiles dado up to lintel level



## DOORS & WINDOWS

- ✓ Decorative main door & other flush door with granite & wooden frame
- ✓ Fully glazed anodized aluminium sliding windows with granite frame



## ELECTRICAL

- ✓ 3 phase Meter MCB & MB Tripper with conceal wiring with adequate points with quality fittings, T.V. & Telephone points in all bedrooms



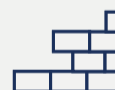
## PLUMBING

- ✓ Concealed plumbing of good quality UPVC & CPVC pipes like Astral or equivalent C.P. fittings of reputed brands like Jaguar or equivalent Sanitaryware of reputed brands



## WALL FINISH

- ✓ Internal: Smooth finish Mala Plaster, white putty of Birla or similar
- ✓ External: Double coat sand faced plaster



## PAINT

- ✓ Internal: Birla White Finish Putty
- ✓ External: Acrylic Paint equivalent to Asian Paints



## LIFT

- ✓ Fully automatic lifts of Omega or equivalent





**Site Address :** Sthapatya Bliss, 36 Mtr Captown Road, Sindhu Bhavan Extension Road, Shilaj, Ahmedabad.

**Office Address :** G 1-2-3, Swar Apartment, Usmanpura, Ahmedabad.

**Phone Number :** +91 90990 00453 | +91 99745 99655

PROJECT BY



ARCHITECT



STRUCTURE



LEGAL ADVISOR



**Rera Number :**

**Rera Website :** [Gujrera.gujarat.gov.in](http://Gujrera.gujarat.gov.in)



A place with  
many **FAMILIES,**  
many **MEMORIES,**  
many **STORIES.**



STHAPATYA BLISS