



SHIVAM MAJESTIC

Comfort & Luxury In Every Space

SHRI MAHAKAL BUILDERS & DEVELOPERS

3 & 4 BHK luxurious flats at very prime location near 7

No. Bus Stand, Railway Colony, Jagatpura, Jaipur

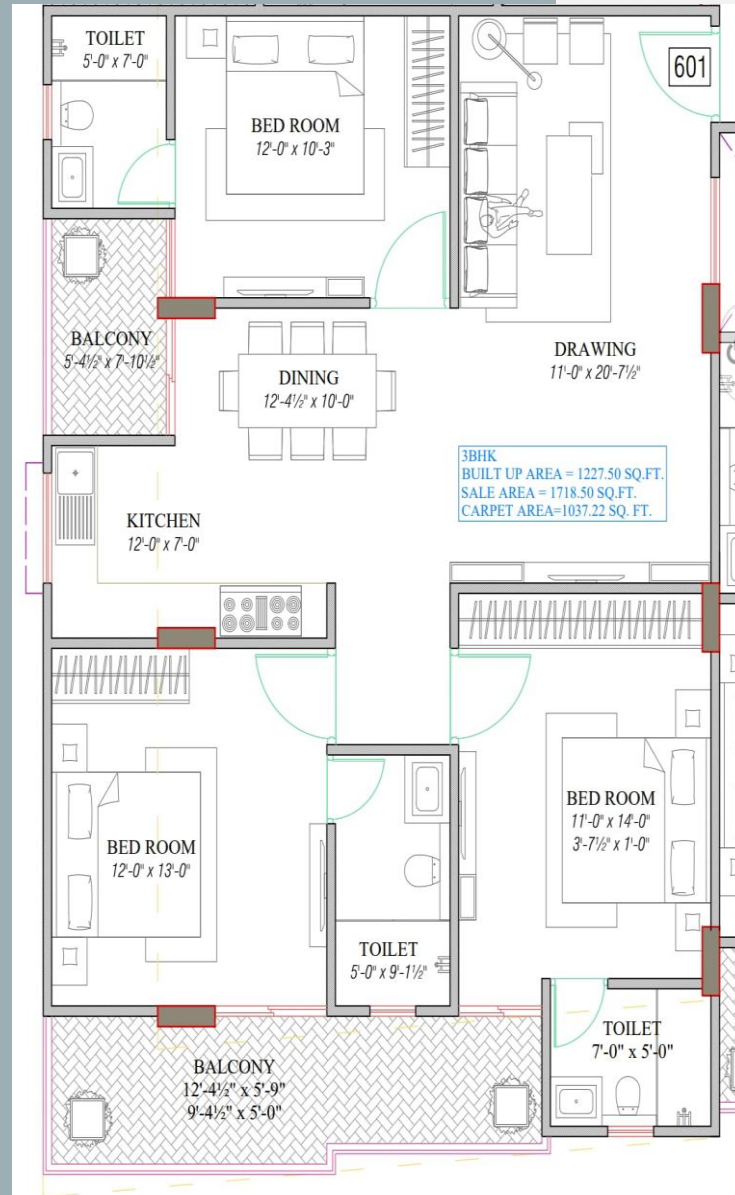
8619198940, 7877241641

AMENITIES

- **Roof Top Walk way**
- **Gated Society**
- **Water Storage / Rain Water Harvesting**
- **Allotted Car parking**
- **Vastu Friendly**
- **JDA and RERA Registered project**
- **A/C Piping**
- **24- h o u r water supply**
- **S.S 8 passenger 2 lifts till rooftop**
- **Swimming Pool**
- **Power Backup for common areas**
- **C.CTV surveillance on each floor**
- **24 hour guard facility**
- **Open terrace GYM**
- **Community Hall**
- **90 % Loanable**
- **Possession Till March 2024**
- **Flexi pay plan availableA ***
- **DTH**
- **WI-FI**
- **T & C Apply***

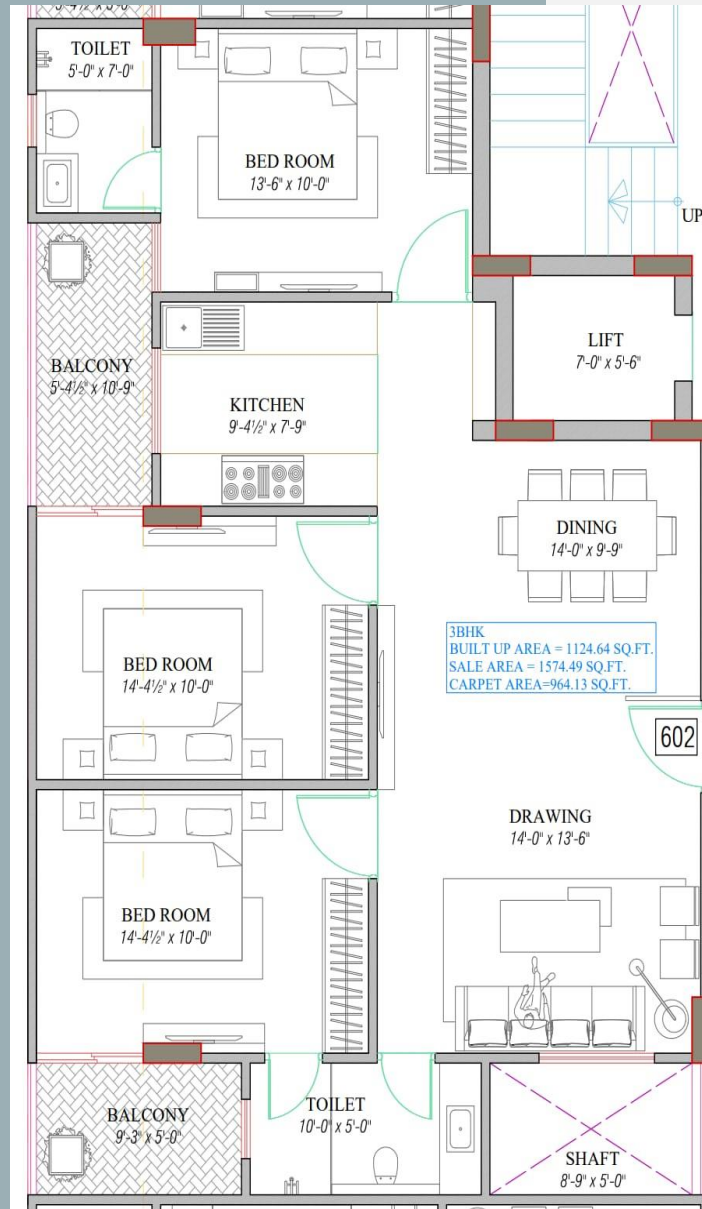
3 BHK
BUILT UP AREA
1227'.50" SQ.FT.
SALABLE AREA 1718'.50"
SQ.FT.
CARPET AREA 1037'.22"
SQ.FT.

2 EXTRA LARGE BALCONY
 BEDROOM 12'-0" X 13'-0"
 BEDROOM 11'-0" X 14'-0"
 BEDROOM 12'-0" X 10'-3"
 KITCHEN 12'-0" X 7'-0"
 DRAWING 11'-0" X 20'-17.5"
 DINING 12'-4.5 X 10'-0"



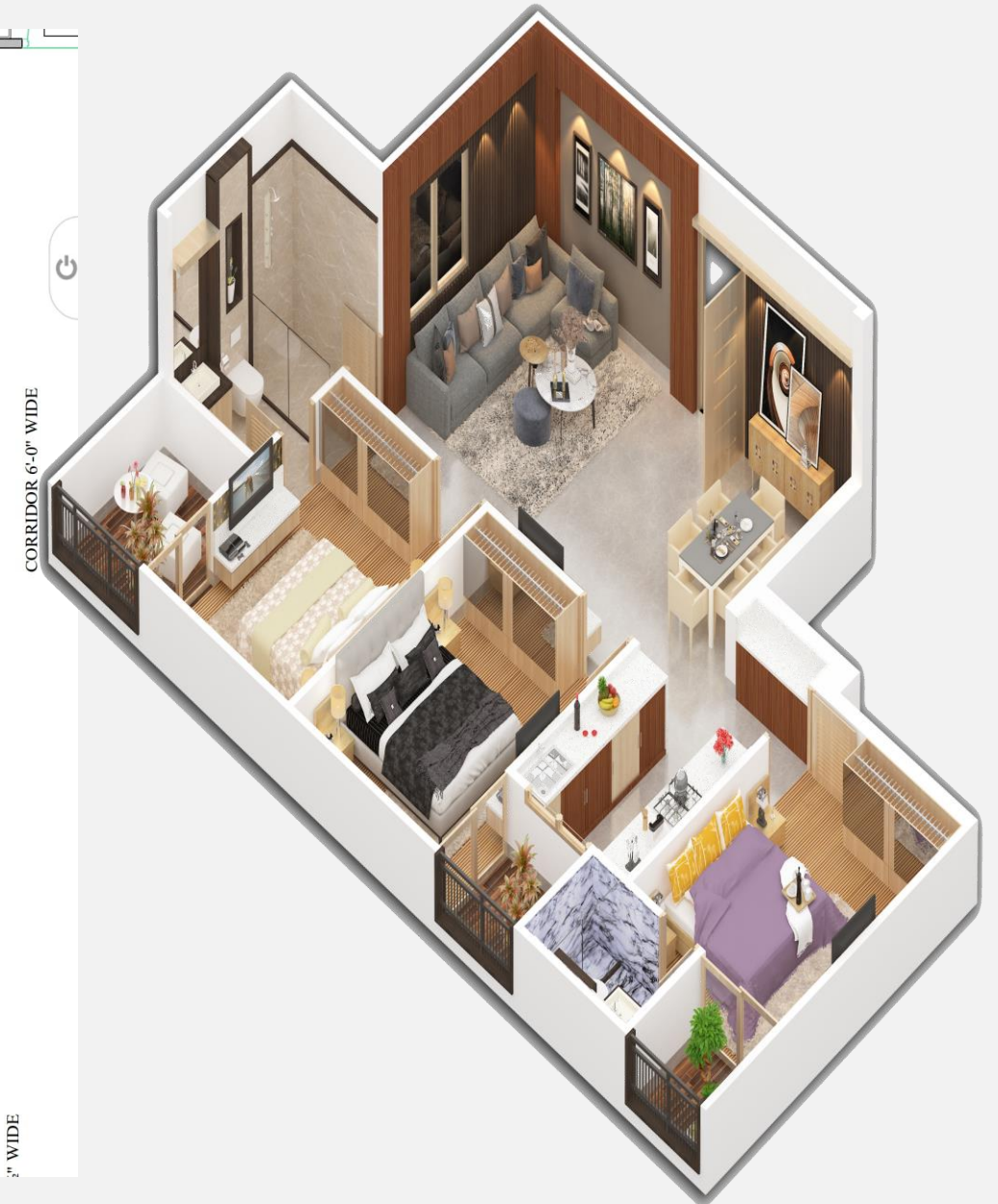
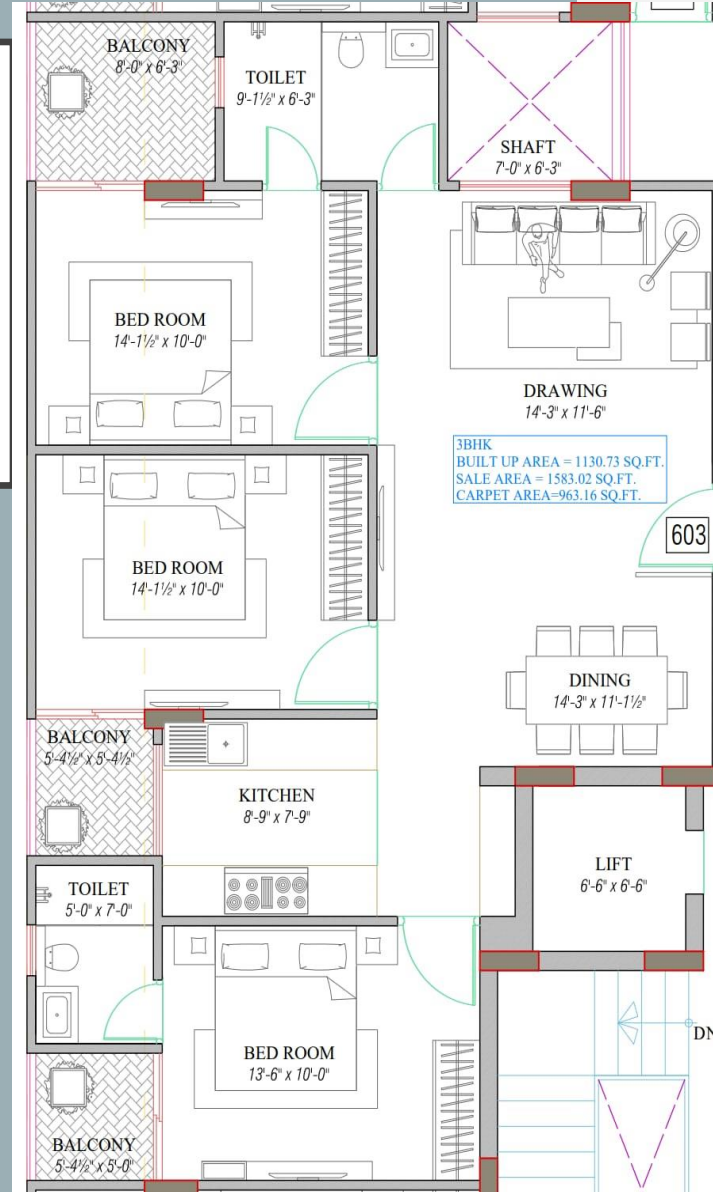
3 BHK
BUILT UP AREA 1124'.64"
SQ.FT.
SALABLE AREA 1574'.49"
SQ.FT.
CARPET AREA 964'.13"
SQ.FT.

2 EXTRA LARGE BALCONY
 BEDROOM 14'-4.5" X 10'-0" (2)
 BEDROOM 13'-6" X 10'-0" (1)
 KITCHEN 9'-4.5" X 7'-9"
 DRAWING 14'.0"X13'-6"
 DINING 14'-0 X 9'-9"



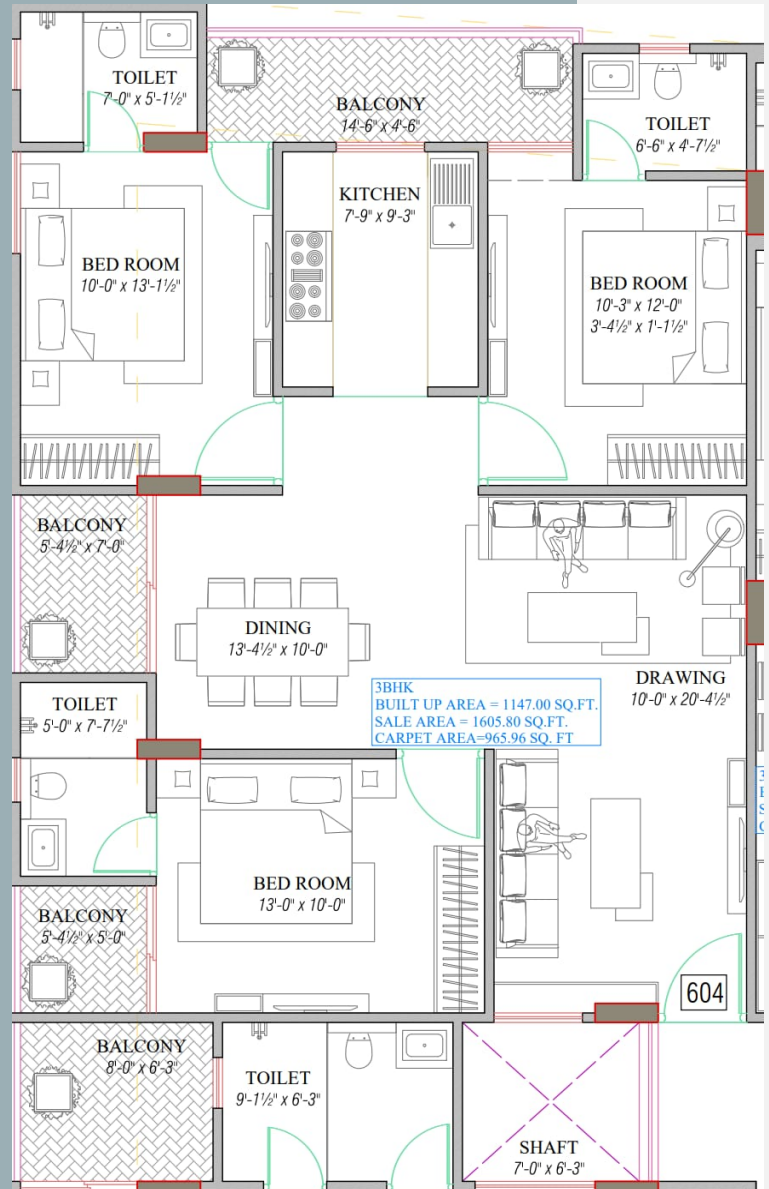
3 BHK
BUILT UP AREA 1130'.73"
SQ.FT.
SALABLE AREA 1583'.02"
SQ.FT.
CARPET AREA 963'.16"
SQ.FT.

3 BALCONY
 BEDROOM 14'-1.5" X 10'-0" (2)
 BEDROOM 13'-6" X 10'-0" (1)
 KITCHEN 8'-9" X 7'-9"
 DRAWING 14'.3"X11'-6"
 DINING 14'-3" X 11'-1.5"



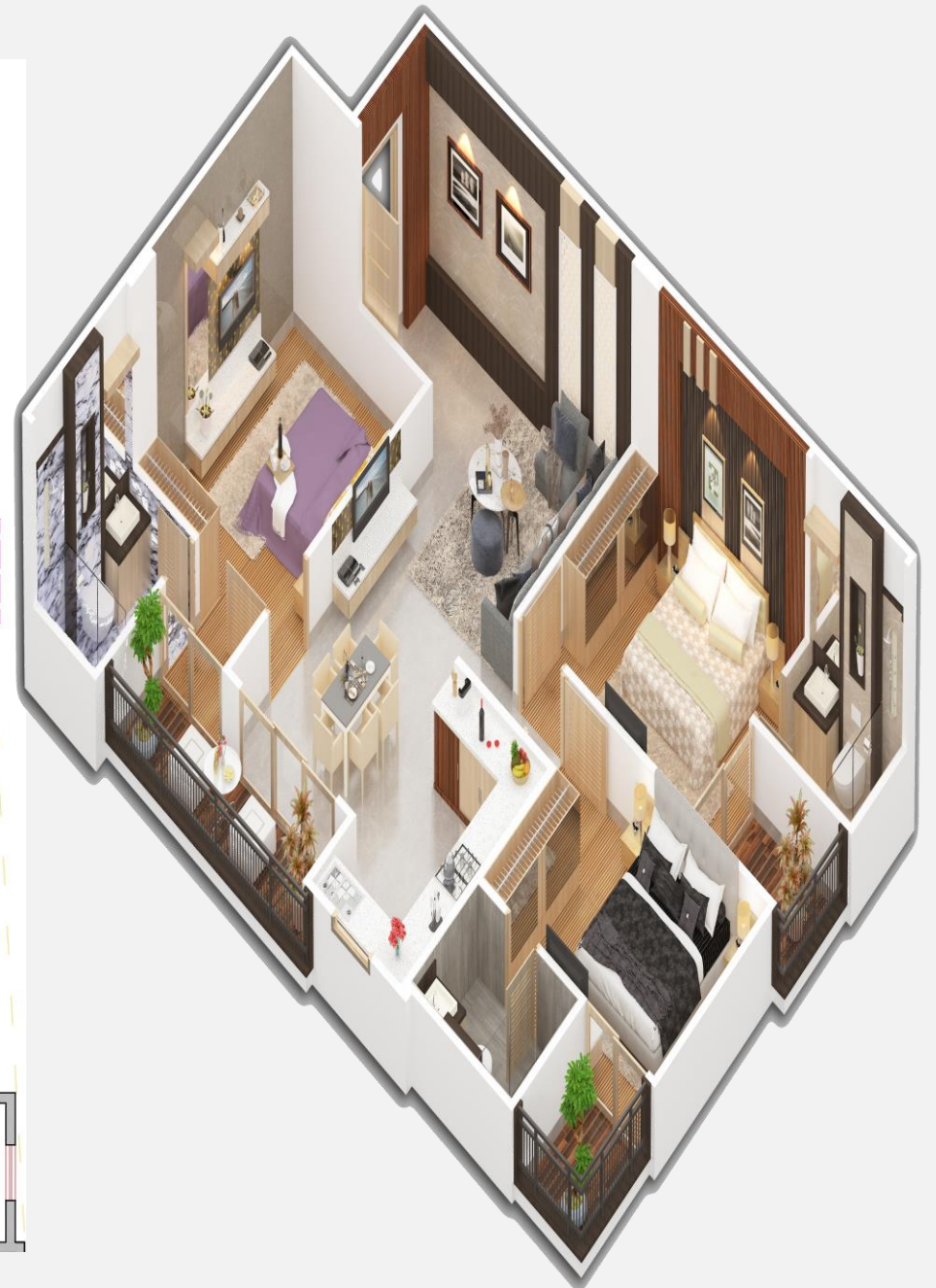
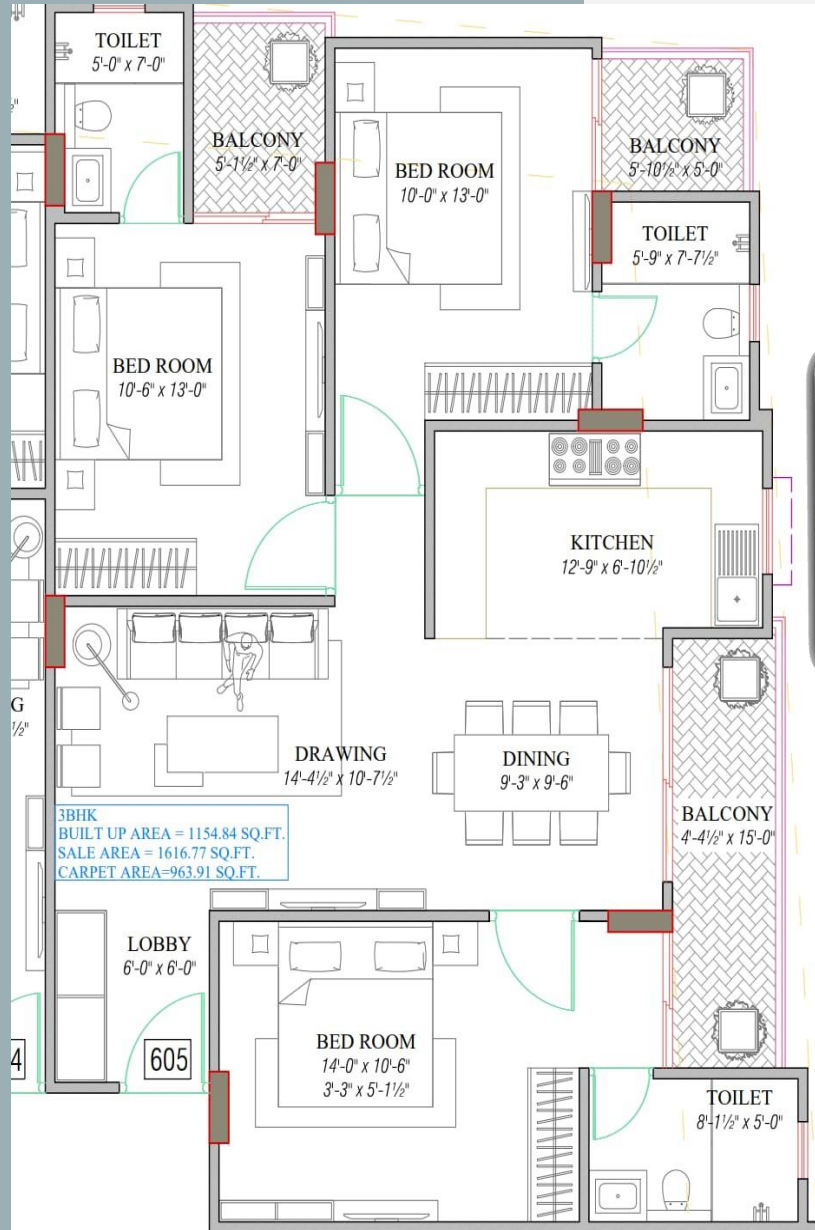
3 BHK
BUILT UP AREA
1147'.00" SQ.FT.
SALABLE AREA
1605'.80" SQ.FT.
CARPET AREA
965'.96" SQ.FT.

4 BALCONY
BEDROOM 10'-0" X 13'-1.5"
BEDROOM 13'-0" X 10'-0"
BEDROOM 10'-3" X 12'-0"
KITCHEN 7'-9" X 9'-3"
DRAWING 10'-3" X 20'-4.5"
DINING 13'-4.5" X 10'-0"



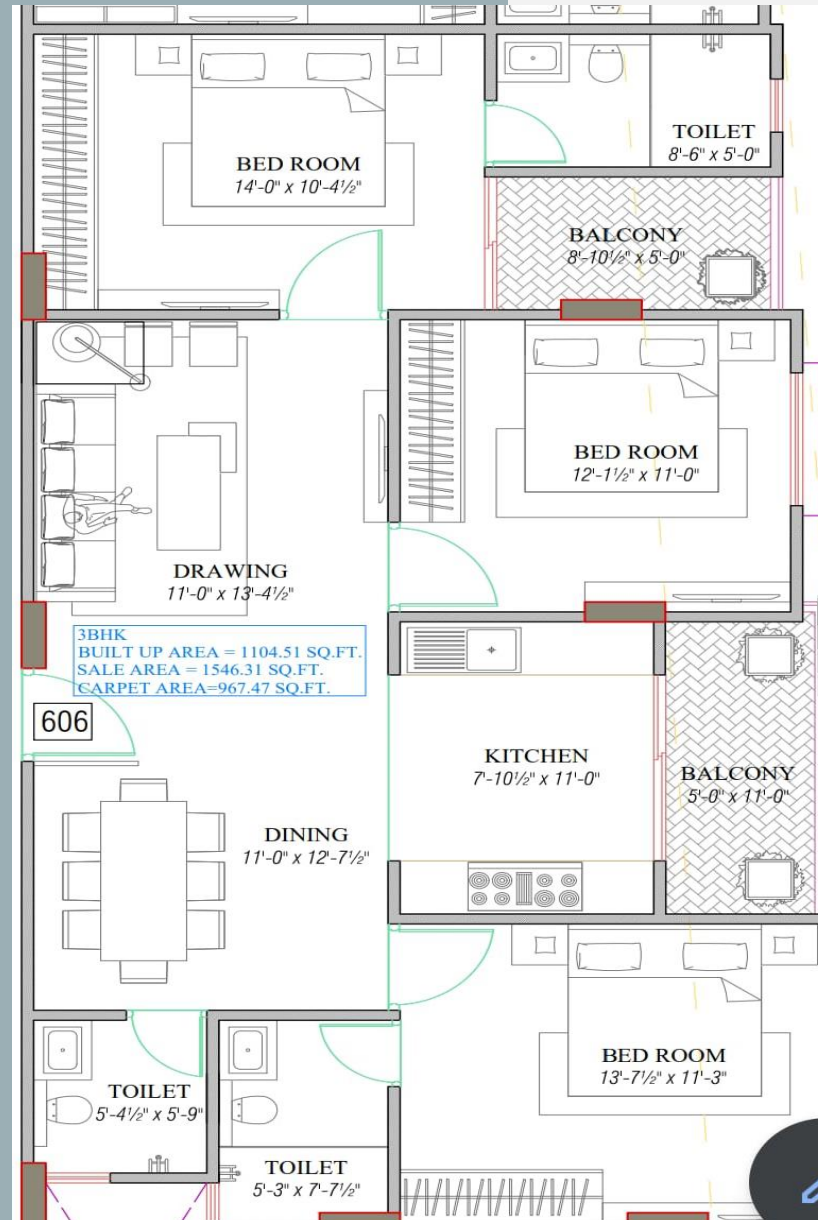
3 BHK
BUILT UP AREA
1154'.84" SQ.FT.
SALABLE AREA
1616'.77" SQ.FT.
CARPET AREA
963'.91" SQ.FT.

3 BALCONY
 BEDROOM 10'-6" X 13'-0"
 BEDROOM 14'-0" X 10'-6"
 BEDROOM 10'-0" X 13'-0"
 KITCHEN 12'-9" X 6'-10.5"
 DRAWING 14'-4.5" X 10'-7.5"
 DINING 9'-3" X 9'-6"



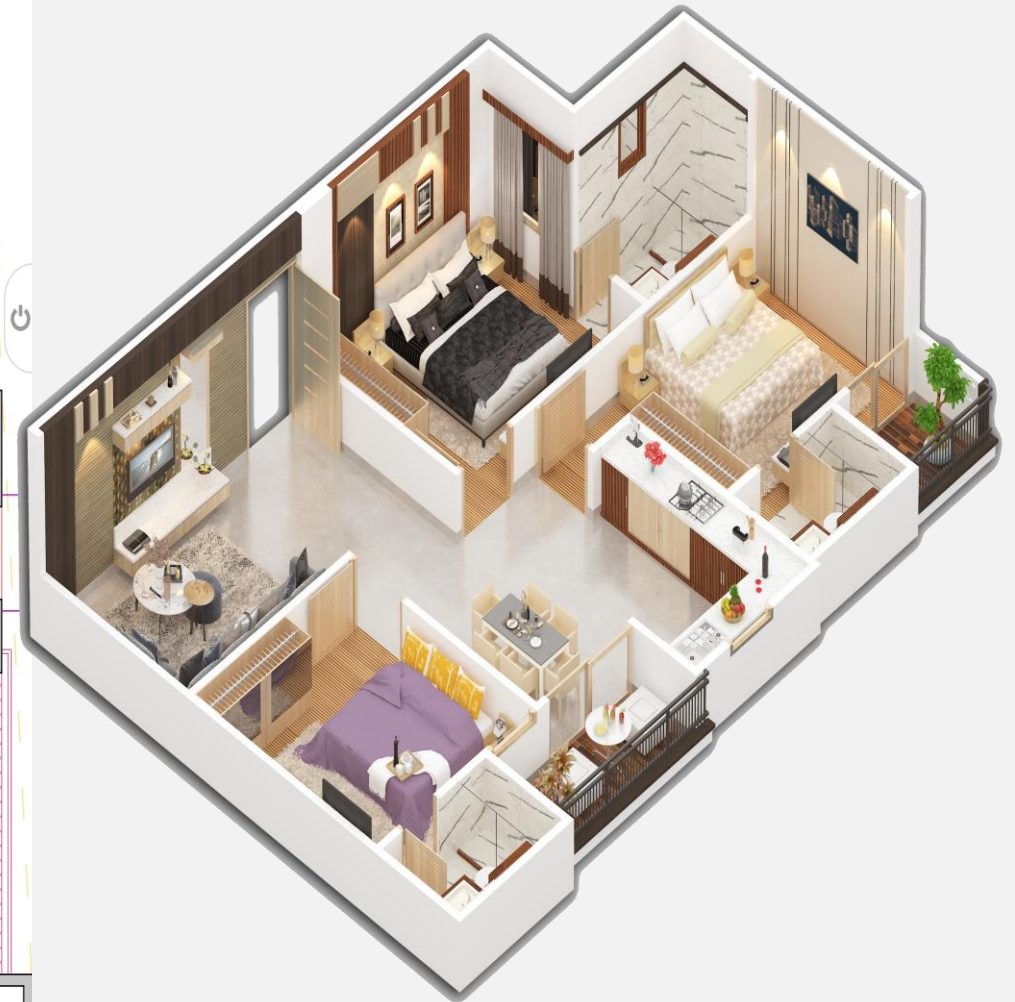
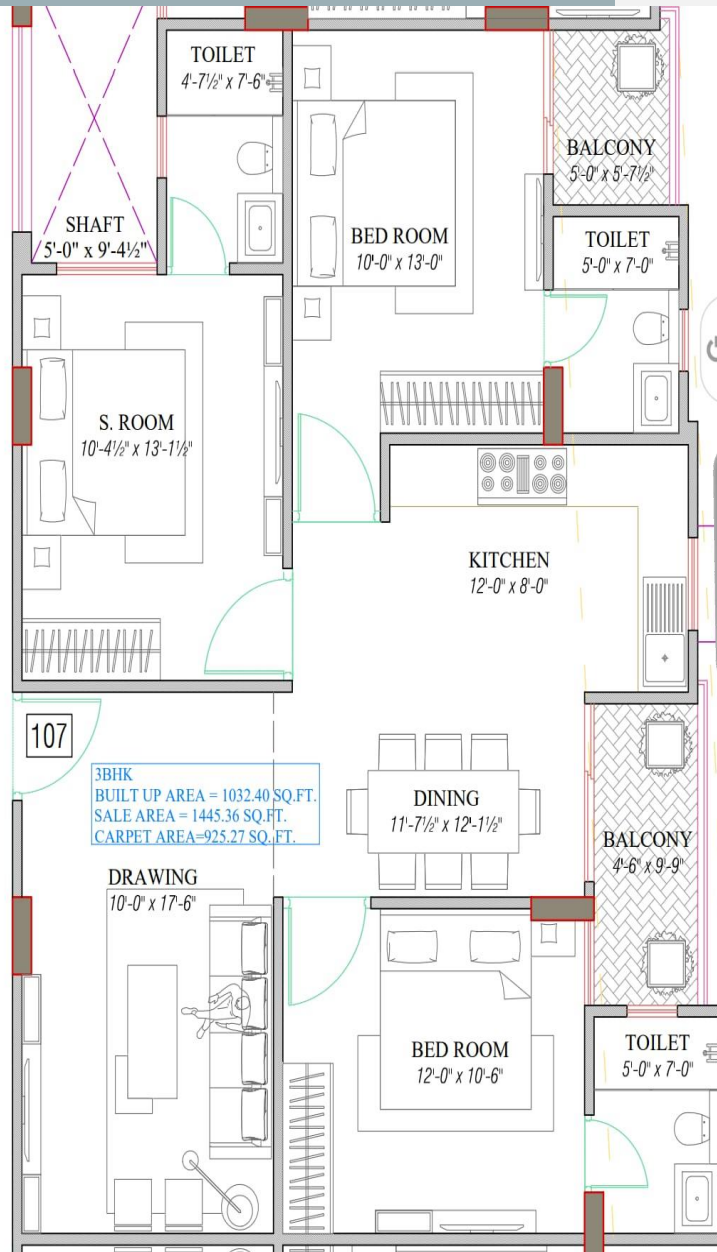
3 BHK
BUILT UP AREA
1104'.51" SQ.FT.
SALABLE AREA
1546'.31" SQ.FT.
CARPET AREA
967'.47" SQ.FT.

2 EXTRA LARGE BALCONY
 BEDROOM 14'-0" X 10'-4.5"
 BEDROOM 12'-1.5" X 11'-0"
 BEDROOM 13'-7.5" X 11'-3"
 KITCHEN 7'-10.5" X 6'-11.0"
 DRAWING 14'-4.5" X 10'-7.5"
 DINING 11'-0" X 13'-4.5"



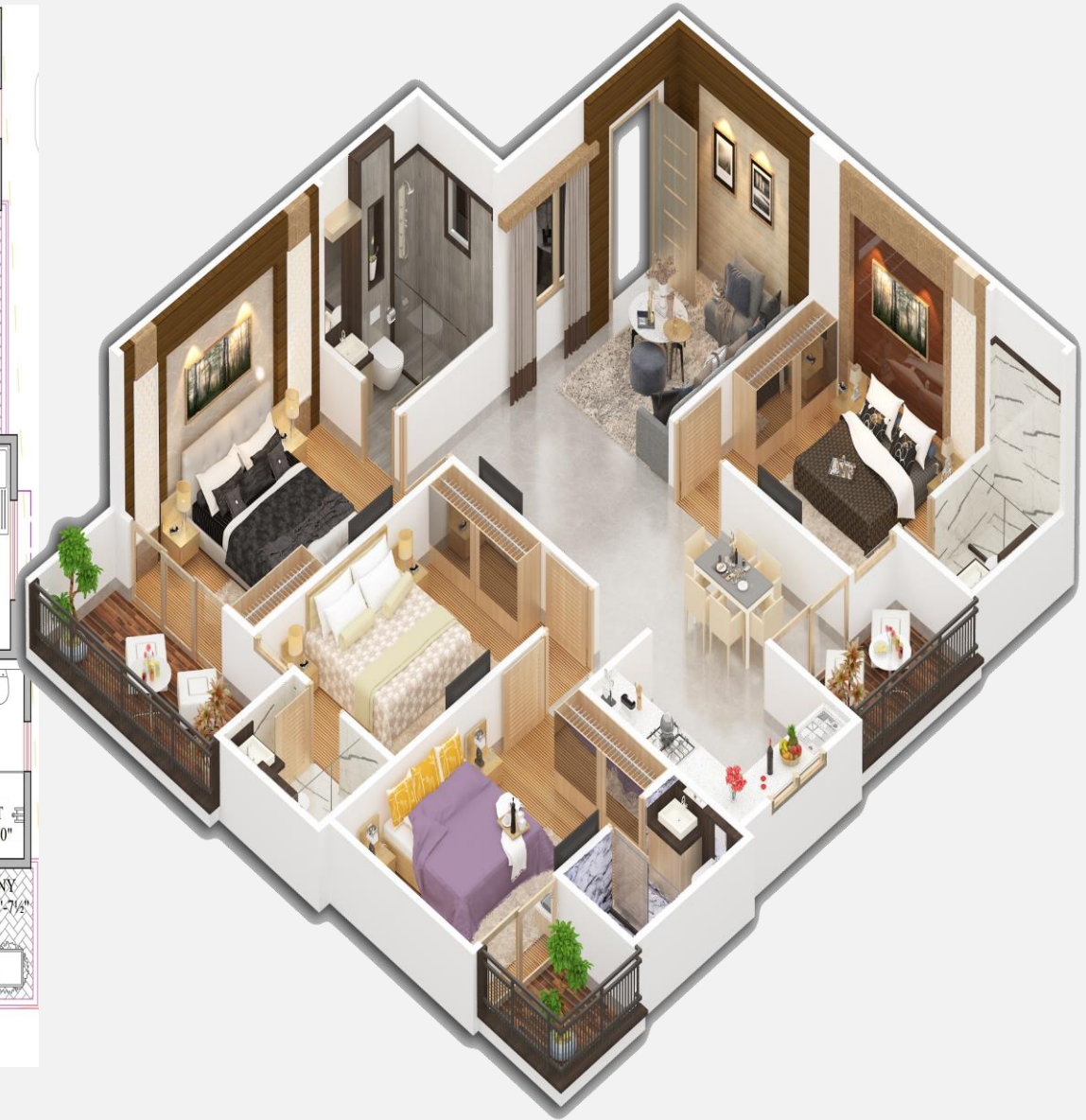
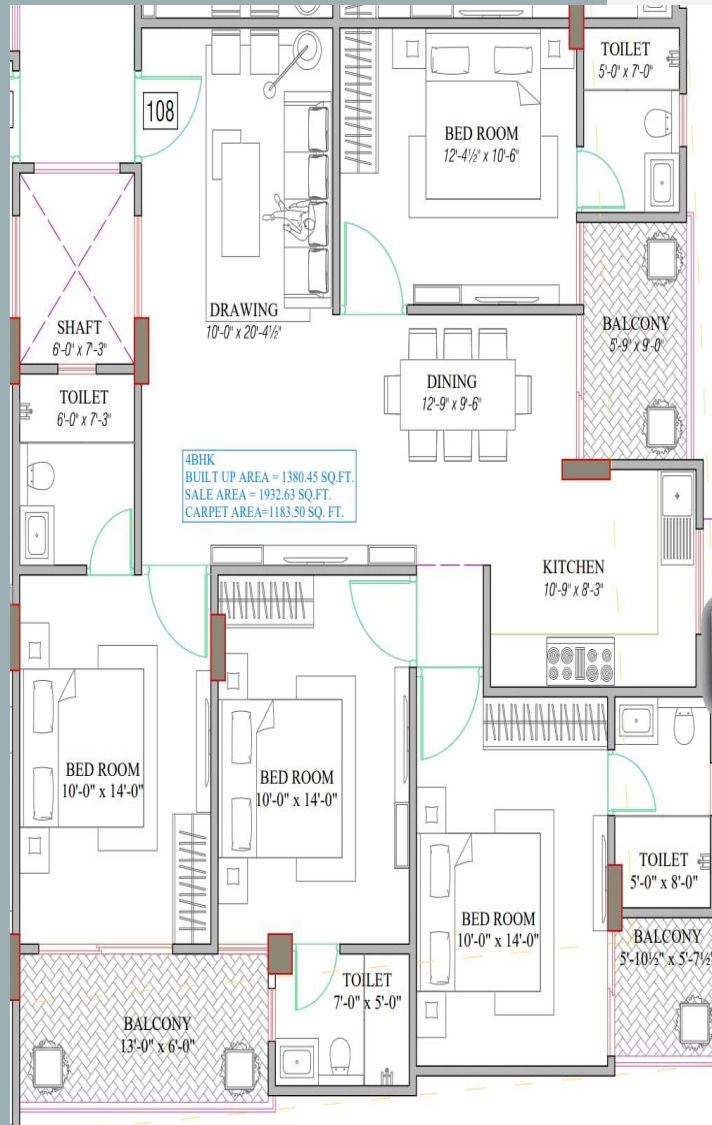
3 BHK
BUILT UP AREA
1032'.40" SQ.FT.
SALABLE AREA
1445'.36" SQ.FT.
CARPET AREA
925'.27" SQ.FT.

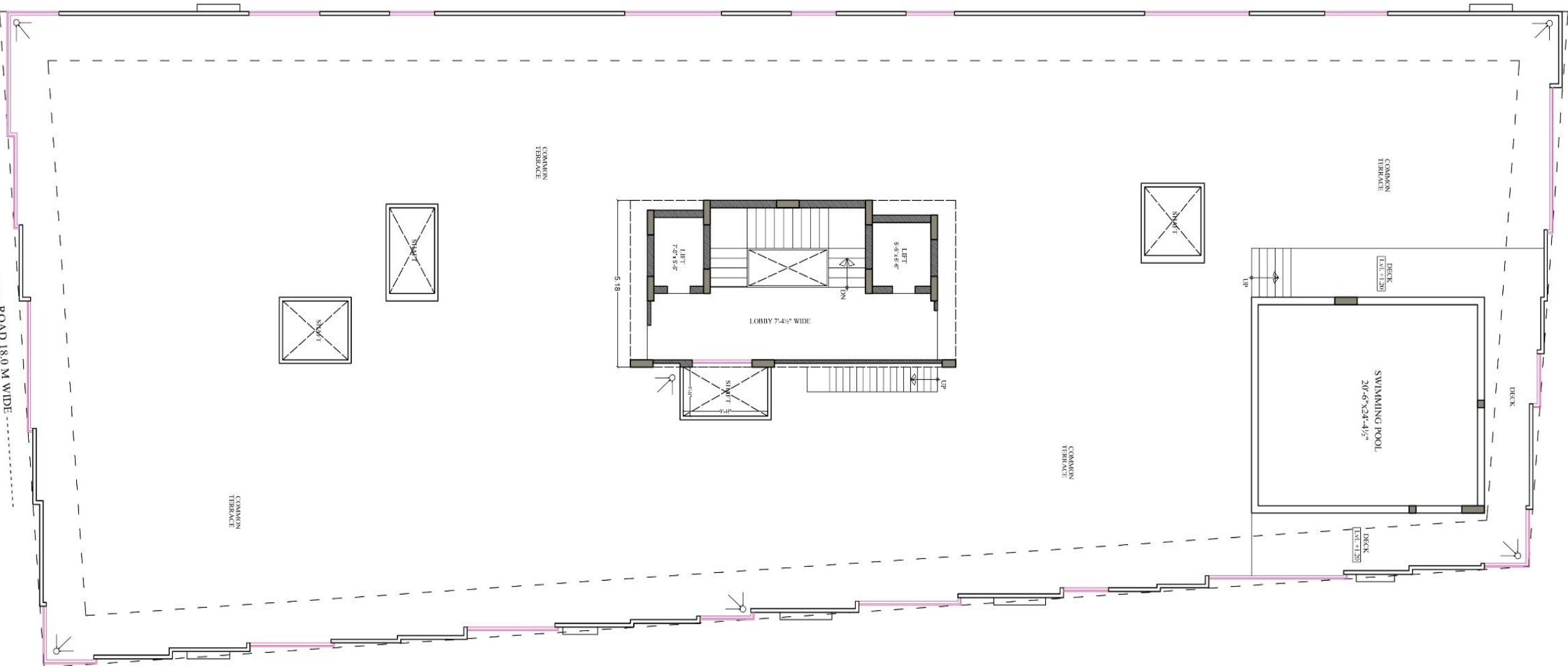
2 EXTRA LARGE BALCONY
BEDROOM 10'-4.5" X 13'-1.5"
BEDROOM 10'-0" X 13'-0"
BEDROOM 12'-0" X 10'-6"
KITCHEN 12'-0 X 8'-0"
DRAWING 10'-0" X 17'-6"
DINING 11'-7.5" X 12'-1.5"



4 BHK
BUILT UP AREA
1380'.45" SQ.FT.
SALABLE AREA
1932'.63" SQ.FT.
CARPET AREA
1183'.50" SQ.FT.

3 EXTRA LARGE BALCONY
 BEDROOM 12'-4.5" X 10'-6" (1)
 BEDROOM 10'-0" X 14'-0" (3)
 KITCHEN 10'-9" X 8'-3"
 DRAWING 10'-0" X 20'-4.5"
 DINING 12'-9" X 9'-6"

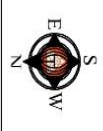




TERRACE PLAN

PROJECT: PROPOSED RESIDENTIAL BUILDING AT EKAL PATTA OF PART OF KHASRA NO. 197 AT REVENUE VILLAGE - TODI RAMJANIPUR, TEH - SANGANER, JAIPUR
 DRAWING: TERRACE PLAN

SCALE: M.S.
 DATE: 09/09/2022
 DRAWN BY: Pashant Raj Sharma
 CHECKED BY: Sri Krishna Sharma



ARCHITECT:
SPACE GRID
 201, Vaidya Park, Sector 17, Gurgaon, Haryana
 Jaipur-302015
 PH: 9011487878/9610114205/006 (0)
 Email: info.spacegrid@gmail.com



ANAND VIHAR, RAILWAY COLONY, JAGATPURA, JAIPUR

CONTACT US

FOR MORE DETAILS

7877241641 8619198940

Reg. Office

Shree Mahakaal Builders & Developers

Cadmax & Mahakaal Builders LLP.

Core Group Of Architects and Developers and Others

99, Braj Puri, Airport Road, Jagatpura, Jaipur

A Project By

इहरी
महाकाल

