

ALASKA

S
K
Y
V
I
E
W

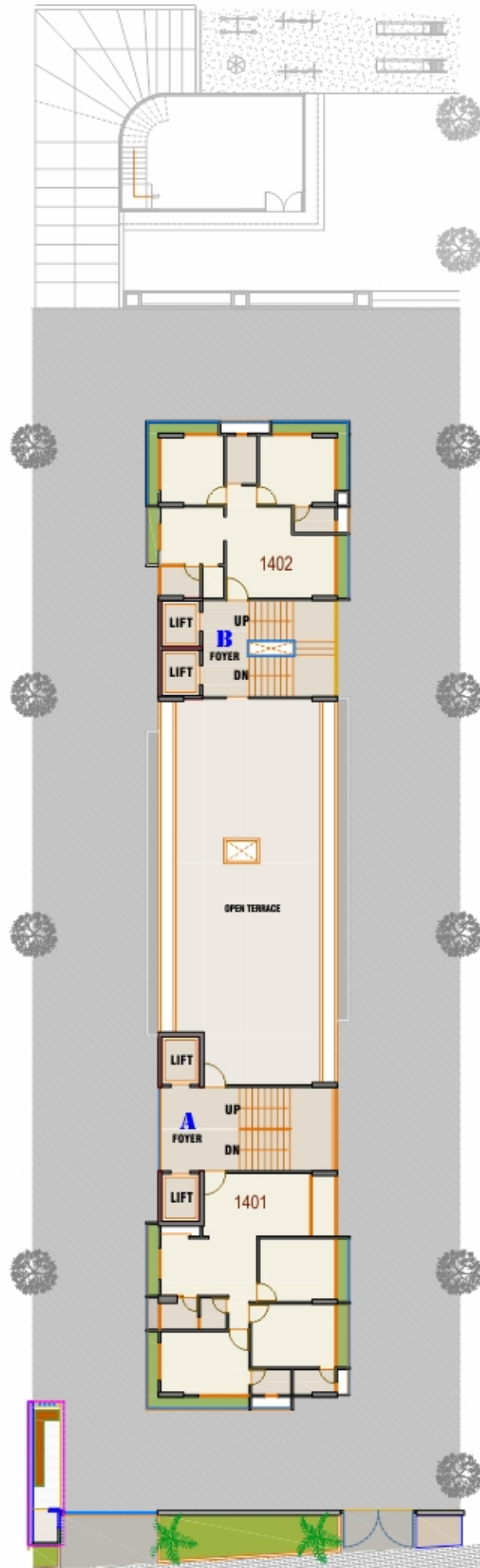


2 & 3 BHK Lifestyle living



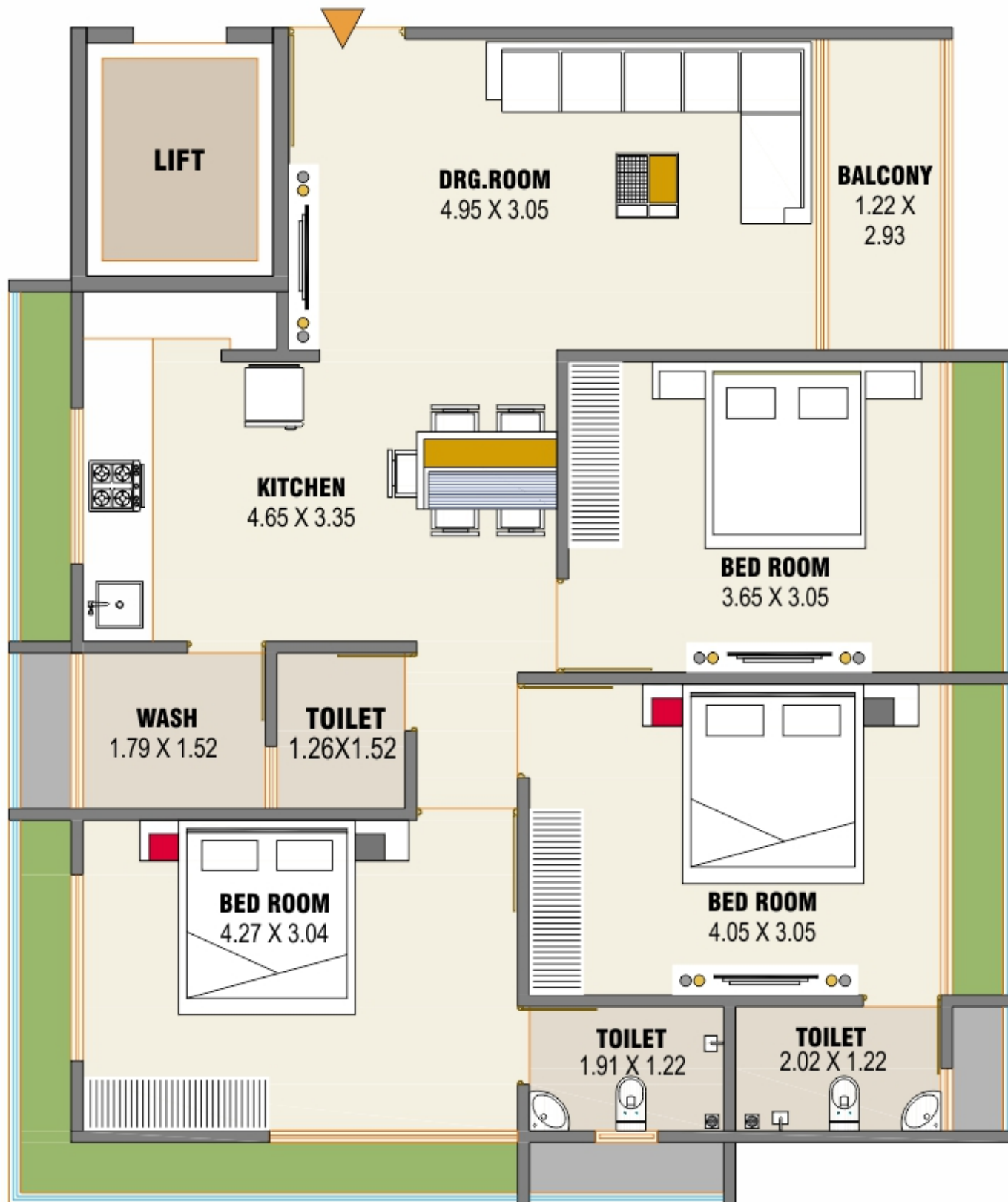


36.00 MT. WIDE T.P.S. ROAD



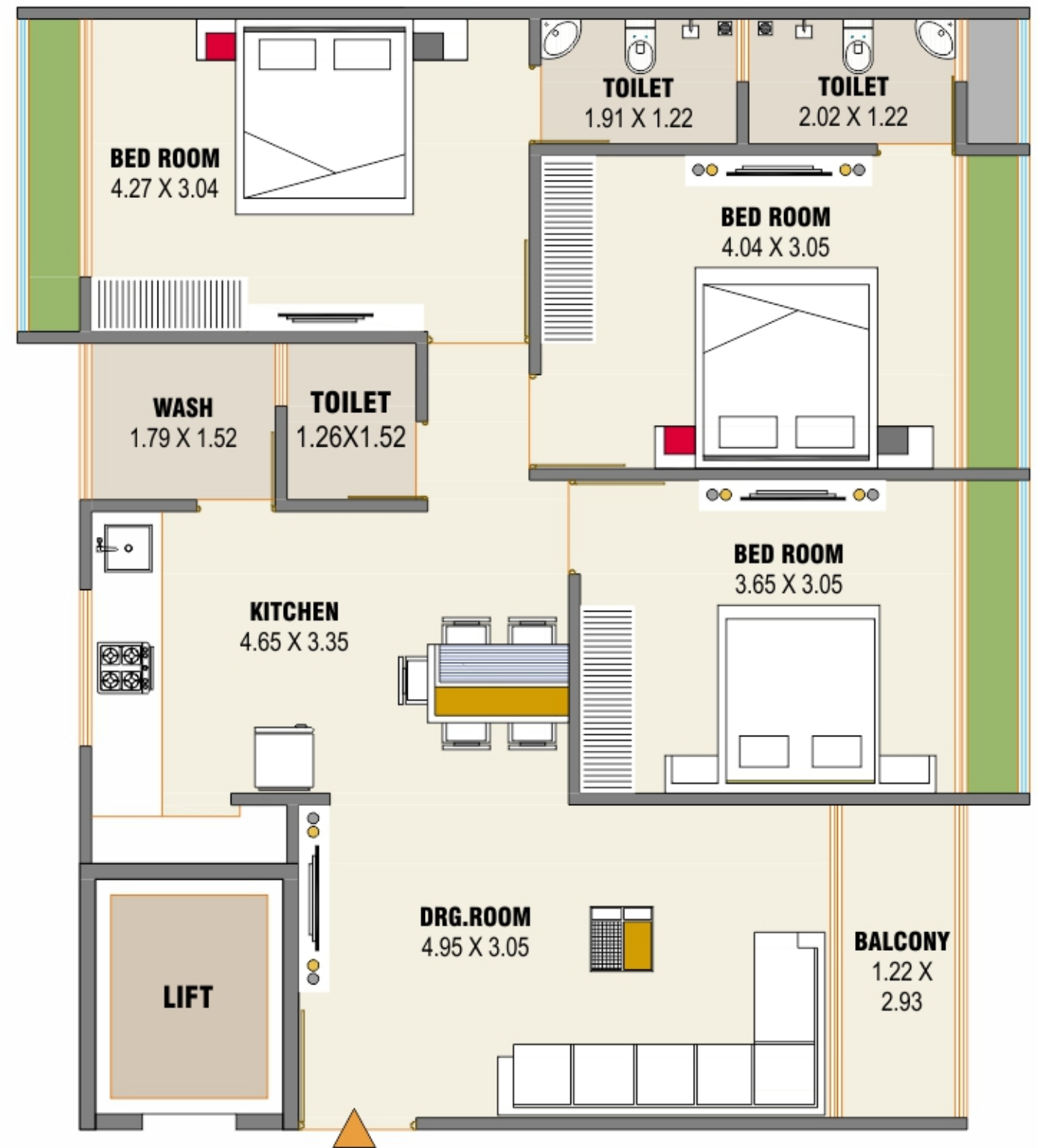
Block_A

3 BHK (Unit 101 to 1401)

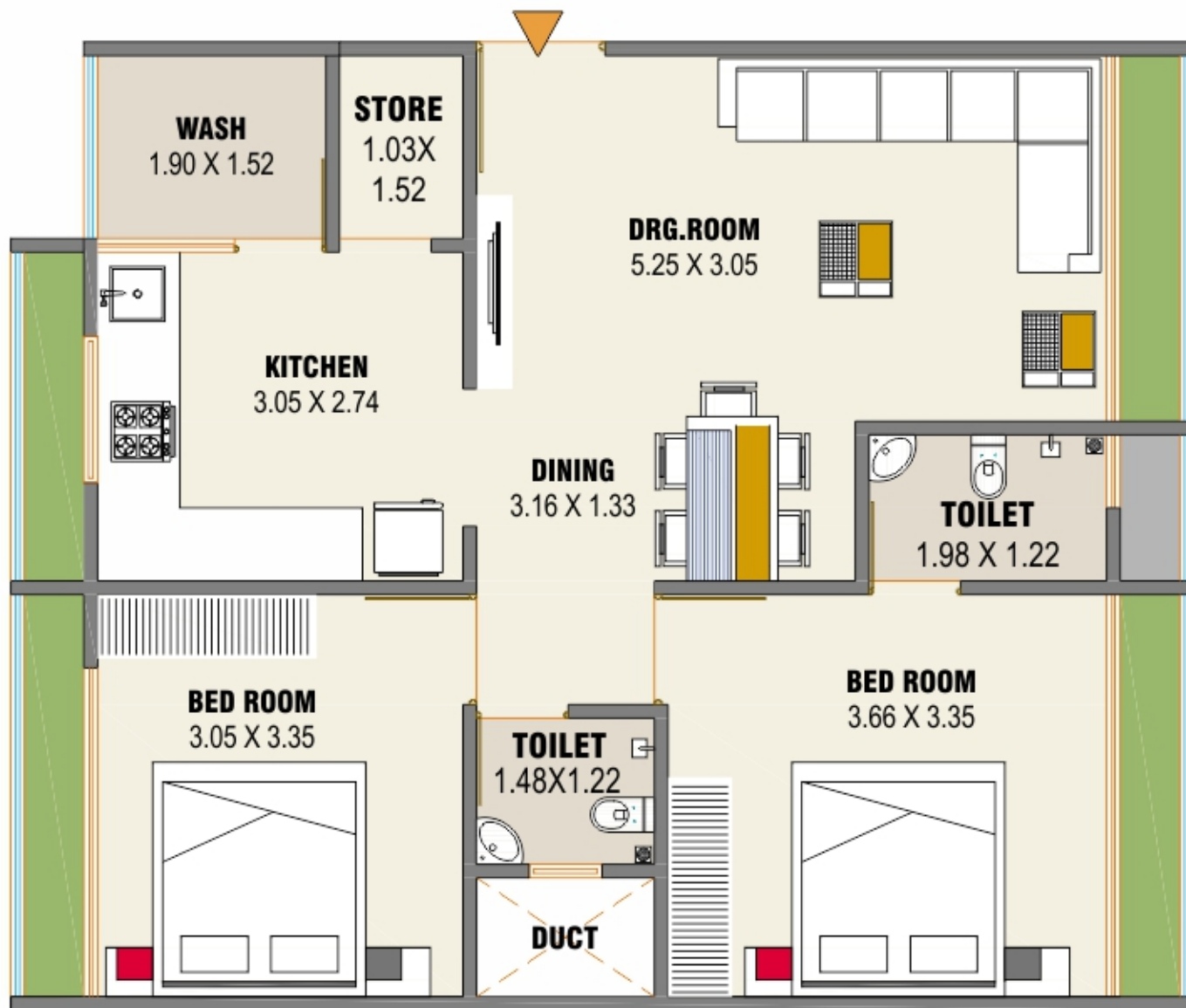
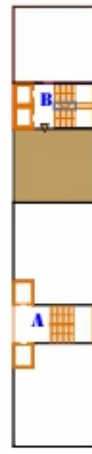


Block_A

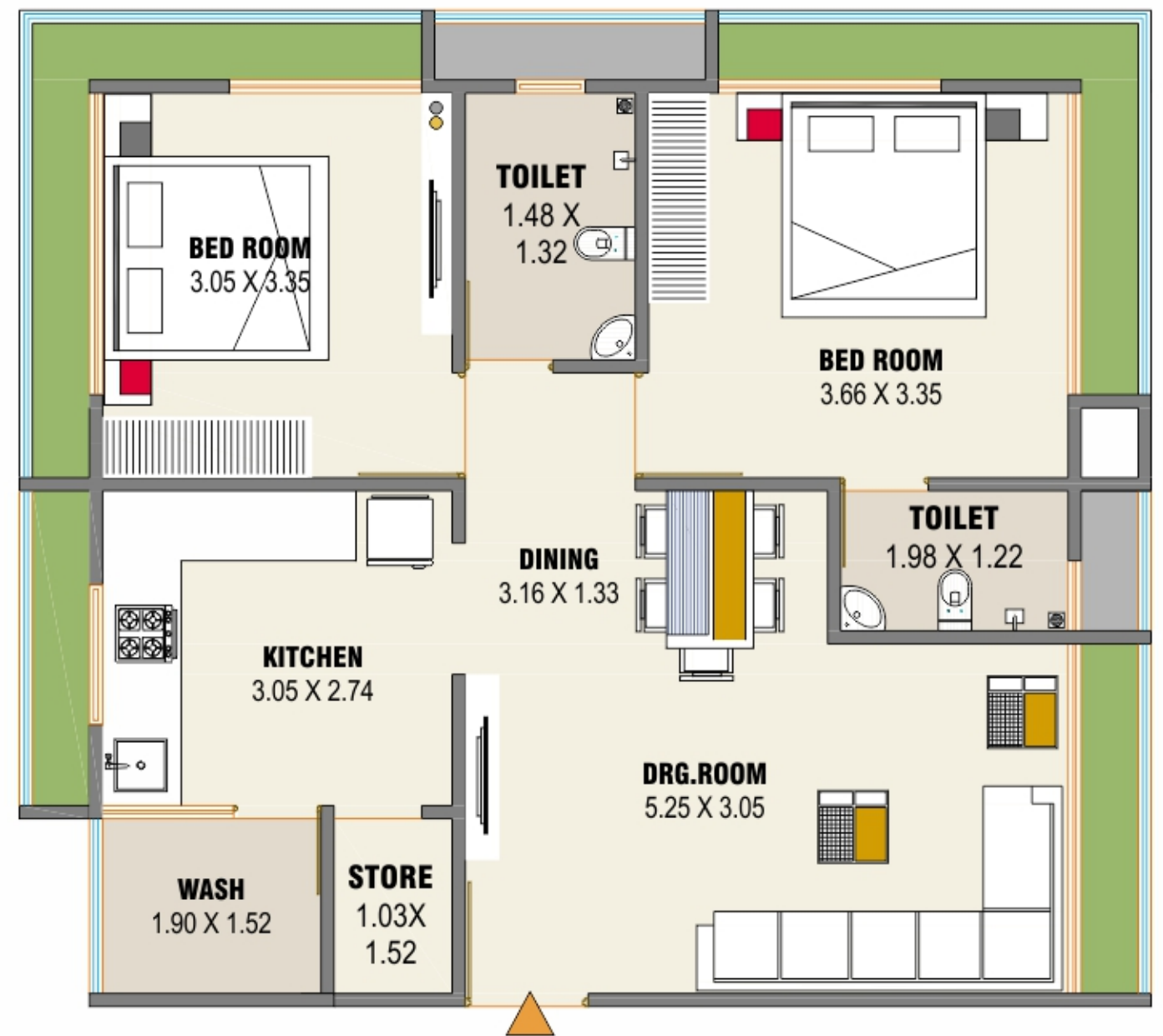
3 BHK (Unit 102 to 1302)



Block_B
2 BHK (Unit 101 to 1301)



Block_B
2 BHK (Unit 102 to 1402)





STRUCTURE

R.C.C. Frame structure / earthquake resistant structure design.



FLOORING

Vitrified tiles for entire flooring in all apartments.



TOILETS

Designer tiles on floor and walls up to lintel level.
Premium quality sanitary ware & bath fittings.



DOOR / WINDOWS

Decorative wooden main entrance door | granite stone frame in toilet.
| fully glazed aluminum domal windows



PLASTER

Internal mala plaster with putty finish / external double coat Plaster with texture.



KITCHEN

Granite top, sandwich platform with s.s sink. Glazed tiles dedo on platform up to lintel level. Store room with granite rack (self)



ELECTRIFICATION

Branded ISI modular switches with concealed branded wiring and adequate number of points. MCB distribution panel.



ELEVATOR

Branded : Automatic branded Elevator.



TERRACE

China mosaic in open terrace & terrace garden for water proofing & heat reduction.



ALASKA SKYVIEW

Near Hillock Hotel, SP Ring Road
Khoraj-Zundal Road, Khoraj,
Gandhinagar - 382421



Scan for Location



RERA No.:
Website: www.gujrera.gujarat.gov.in

DEVELOPER



RR Infra

Move To Your Dream Home

Contact for booking: 72010 10206

ARCHITECT
7 SQUARE
ARCHITECTS