



# આરિયણ *Sky*

**1 & 2 BHK LIVING FLATS & SHOPS**





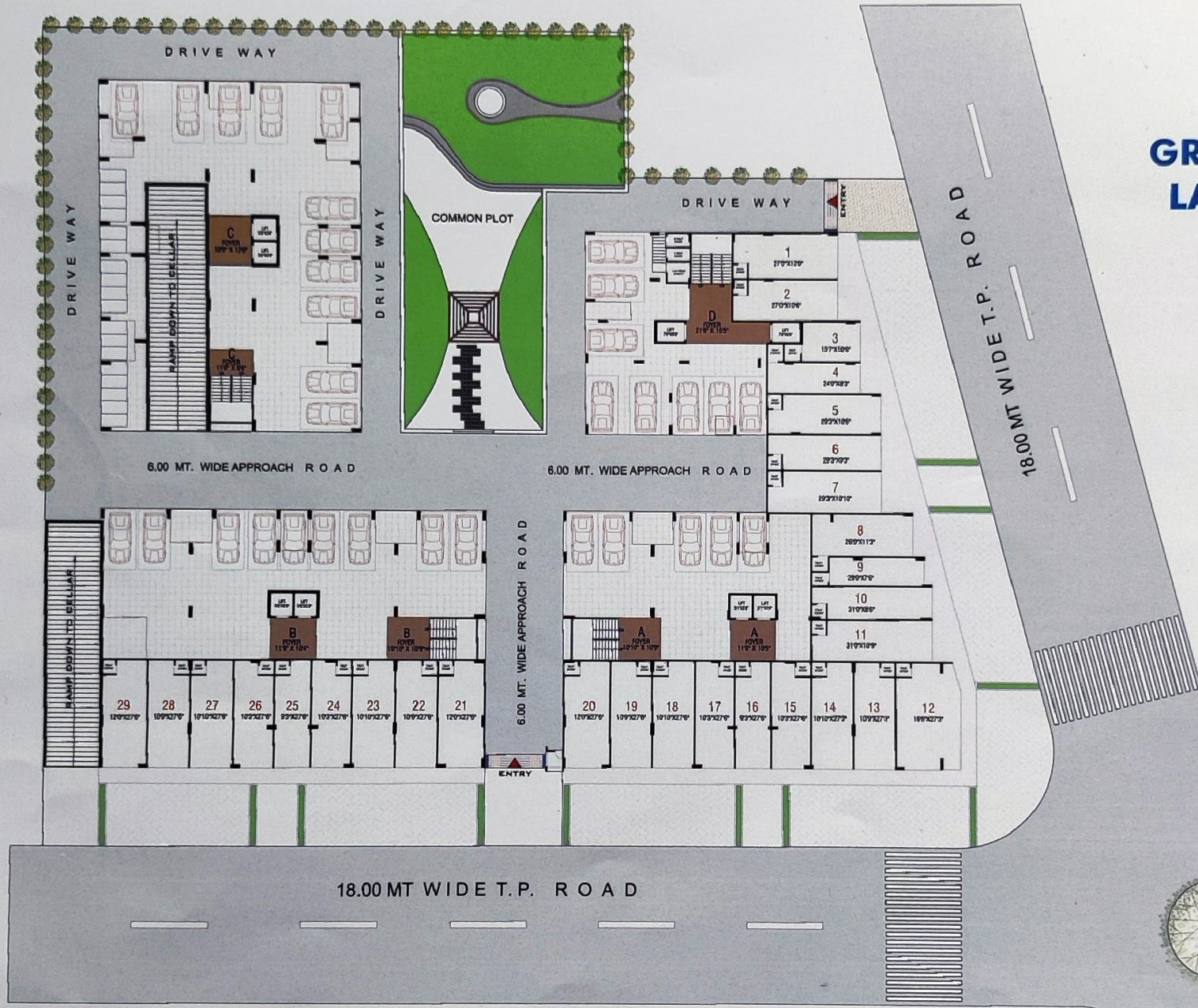








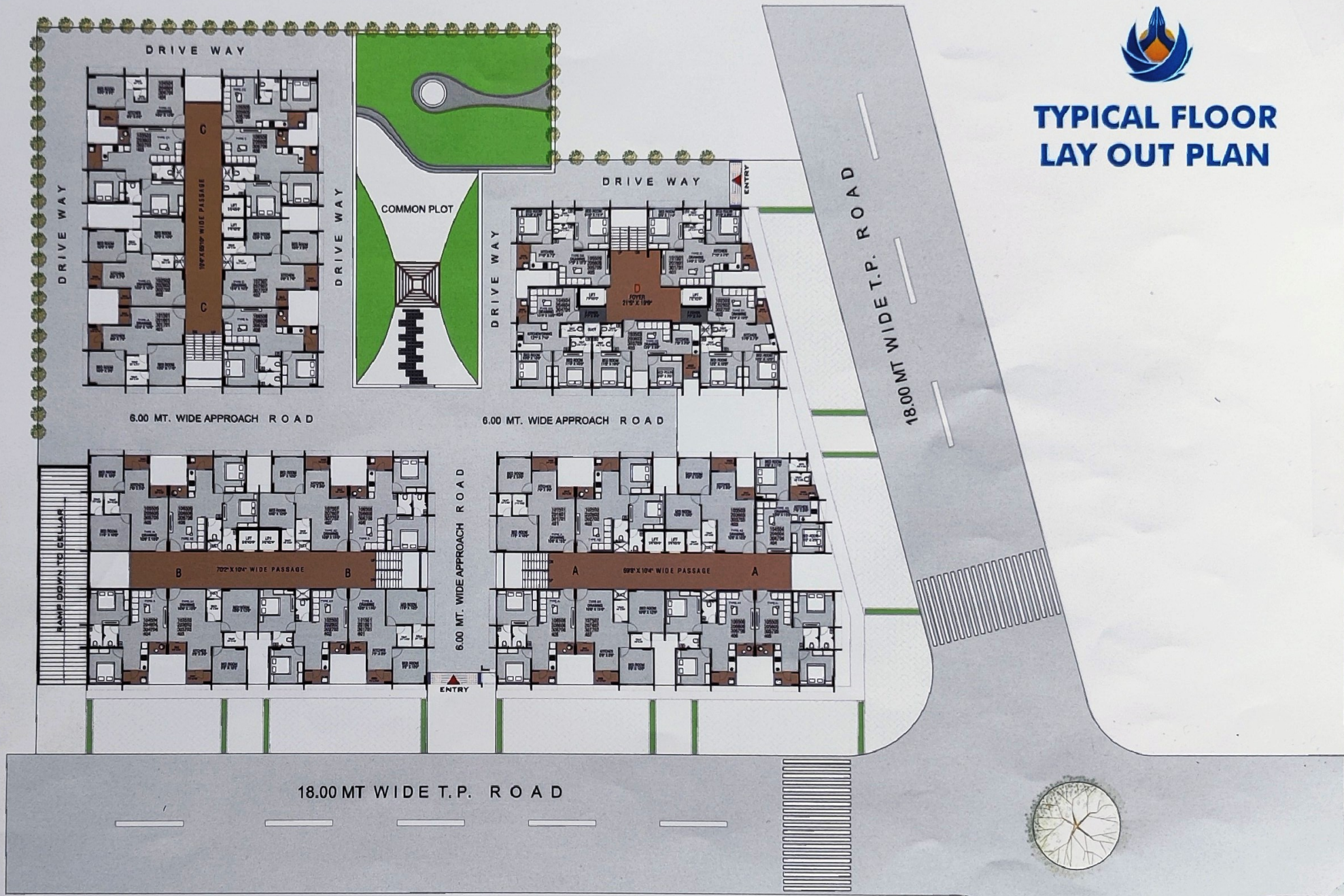
# GROUND FLOOR LAY OUT PLAN







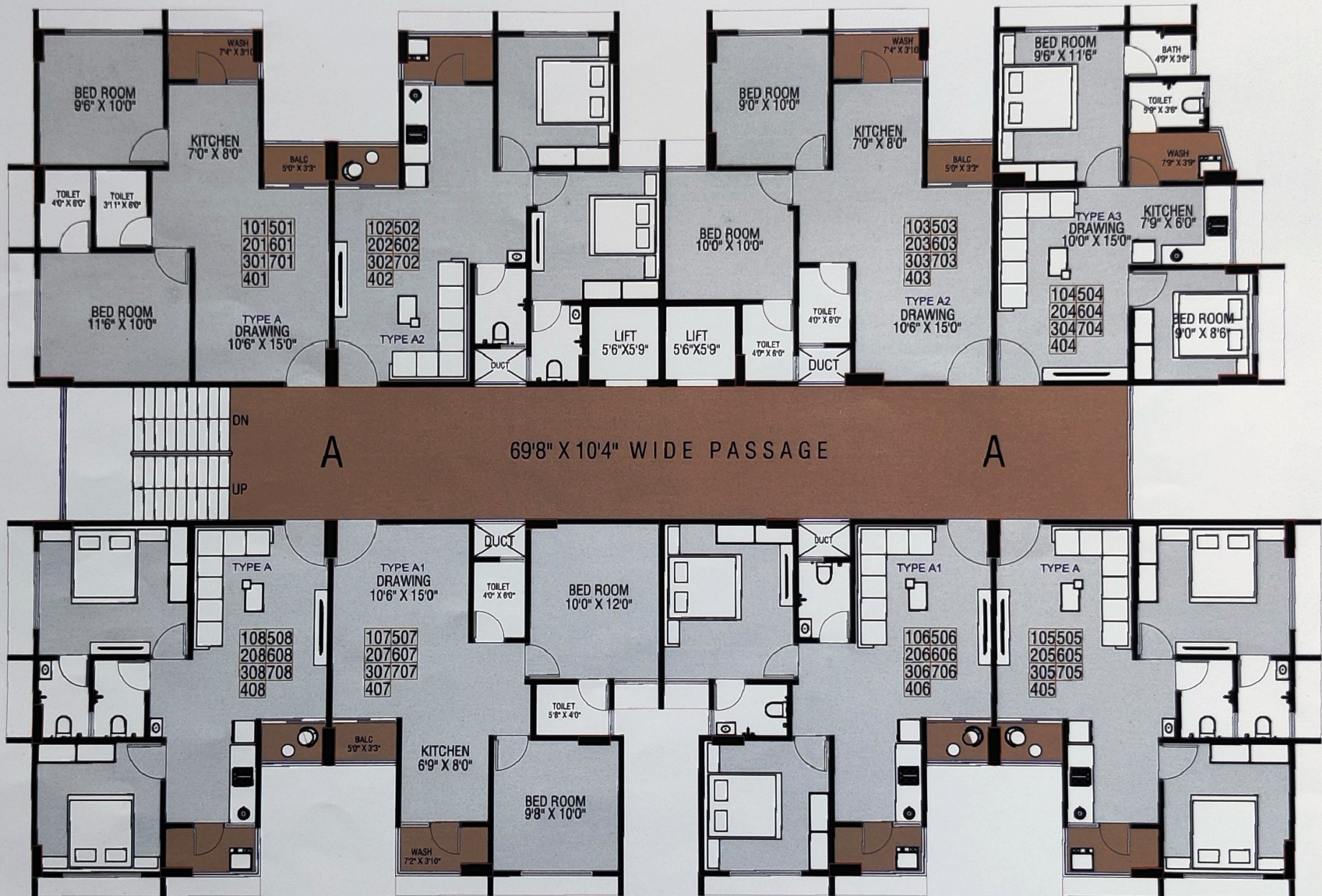
# TYPICAL FLOOR LAY OUT PLAN







# BLOCK - A





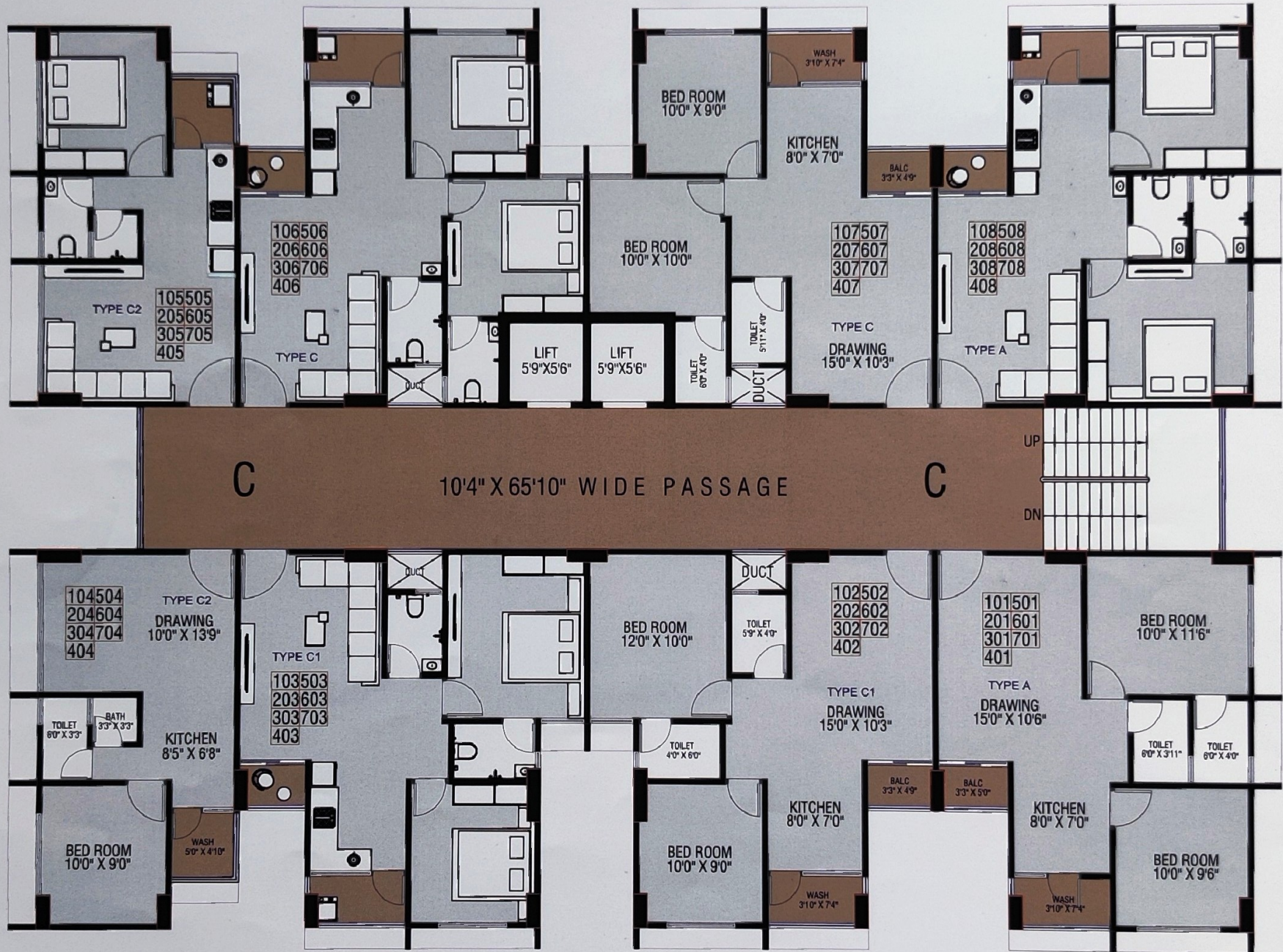
# BLOCK - B







# BLOCK - C











## SPECIFICATION

### FLOORING

- GOOD QUALITY VITRIFIED TILES.

### KITCHEN

- GRANITE PLATFORM TILES DADO UP TO UNTEL LEVEL.

### WASH

- GLAZED TILES DADO UP TO SILL LEVEL.

### TOILET

- STANDARD BRANDING C.P. FITTING & SANITARY FITTING.
- INDIAN W.C. IN COMMON BATHROOM & EUROPEAN W.C. IN M. BEDROOM.

### LIFT

- AUTO DOOR PASSENGER LIFT.

### MAIN DOOR

- ATTRACTIVE MAIN DOOR.
- INTERNAL FLUSH DOOR WITH LAMINATED SHEET.

### WINDOWS

- SLIDING SECTION WITH GRANITE FRAME.
- STANDARD REFLECTION GLASS.

### ELECTRIFICATION

- CONCEALED FITTING WIRING OF STANDARD (ISI MARK) COMPANY WITH MODULAR SWITCHING AN M.C.B. TV.

### INTERIOR FINISH

- SINGLE COAT PLASTER WITH LAPI FINISH.

### TERRACE

- DOUBLE COAT WATER PROOFING WITH CHINA MOSAIC.

### EXTERIOR FINISH

- OUT SIDE DOUBLE COAT PLASTER AND STANDARD EXTERIOR COLOR.

### PLUMBING

- CPVC / UPVC PIPING FOR WATER SUPPLY SYSTEM. OVER HEAD WATER TANK IN EACH BLOCK.





# AARADHANA *Sky*

Inside of Lambha Vatva Canal Road,  
Divin Life School Road,  
Near Kalash-2, Narol(Vatva)-382440.

✉ aaradhanasky@gmail.com

## NOTES:

- This brochure is not as legal part of document but only for easy understanding to customer.
- AMC, GST, Taxes, Power, and legal charges will be extra at the time of the agreement.
- Irregular payment cause for cancellation of the booking.
- All rights are reserved by developers to make any changes in plan, scheme elevation, dimentation and other details there in to comply with statutory regulation shall be binding to all the members.
- Subject to Ahmedabad Jurisdiction.
- Payments infavour of "GANESH INFRA".



Architect Engineer  
AKSHAT THE PRIORITY  
Ahmedabad

Structural Engineer  
AMU  
CONSULTING ENGINEERS  
Ahmedabad





Developers

**GANESH**  
INFRA



**AARADHANA**  
*Sky*

Inside of Lambha Vatva Canal Road, Divin Life School Road,  
Near Kalash-2, Narol(Vatva)-382440.

✉ [aaradhanasky@gmail.com](mailto:aaradhanasky@gmail.com)

CONTACT : 8200005158