

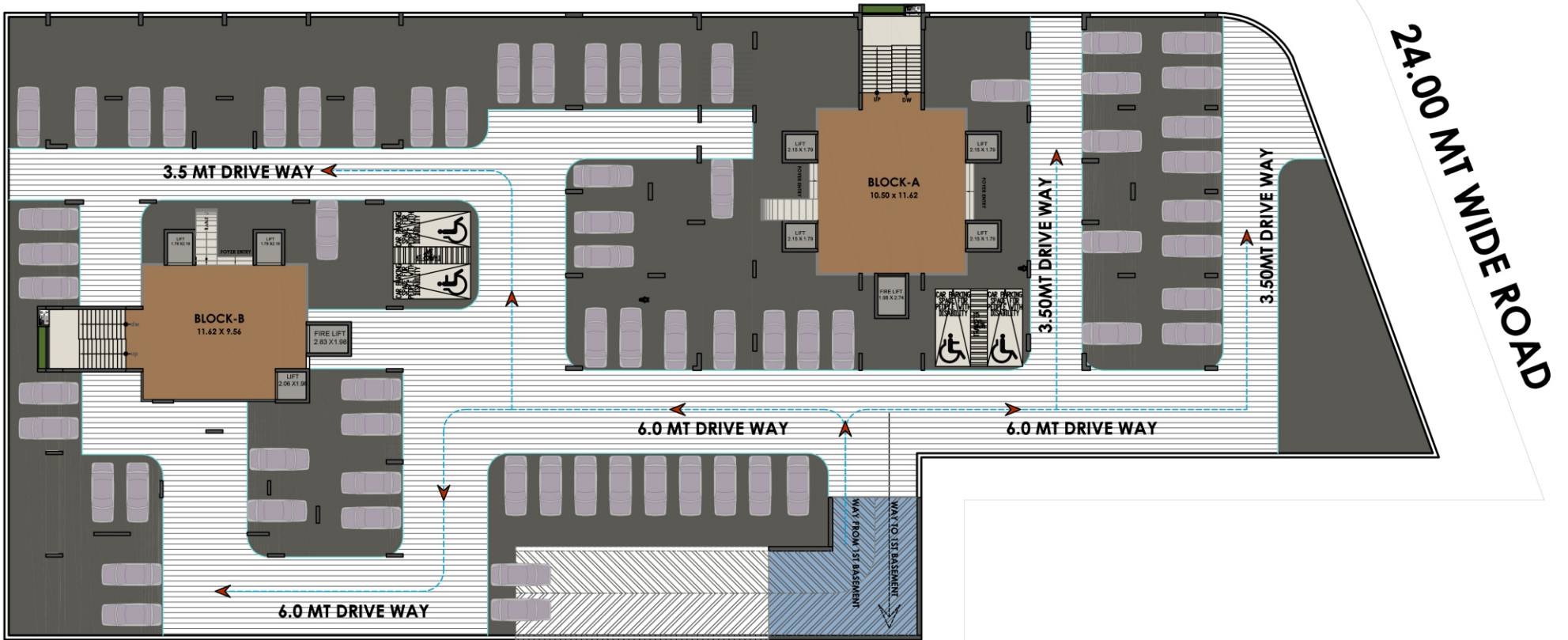


*The*  
**PALLADIA**  
4 & 5 BHK SUPERIOR LIFESTYLE



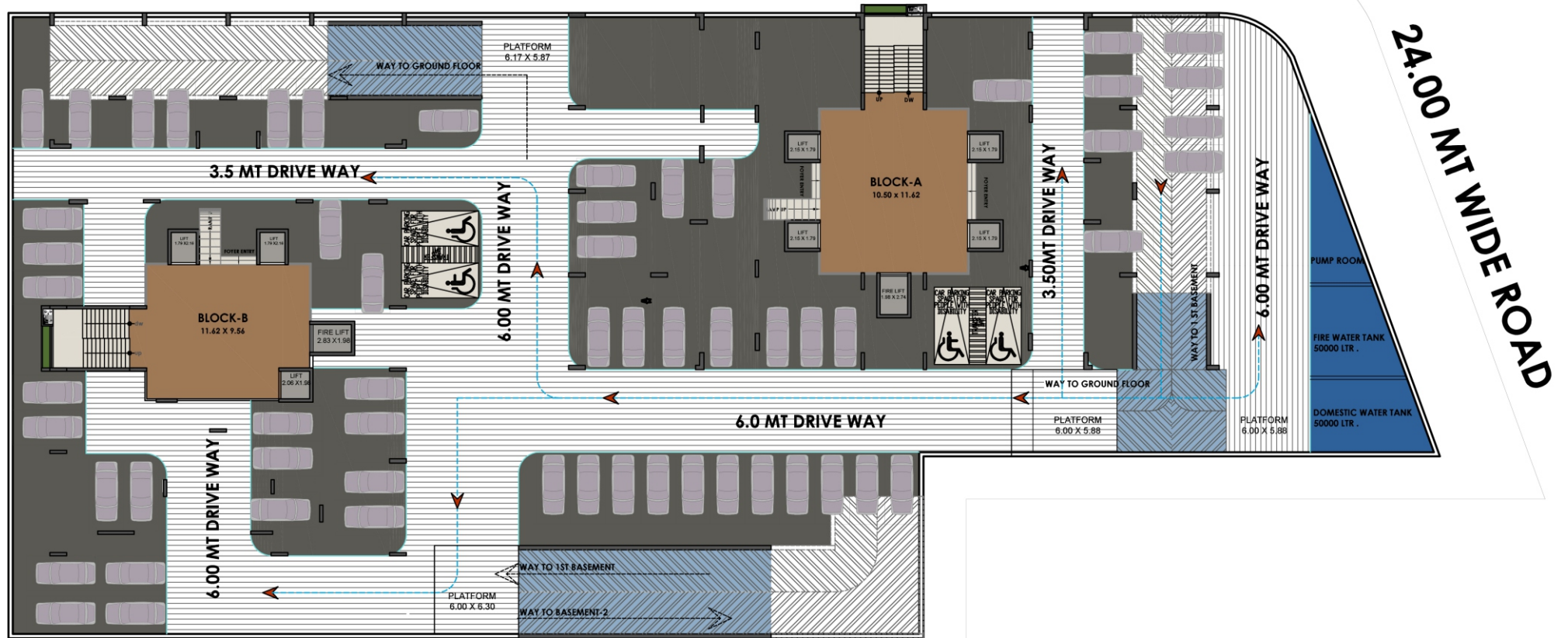


18.00 MT WIDE ROAD



SECOND BASEMENT LAYOUT

# 18.00 MT WIDE ROAD



FIRST BASEMENT LAYOUT

# 18.00 MT WIDE ROAD

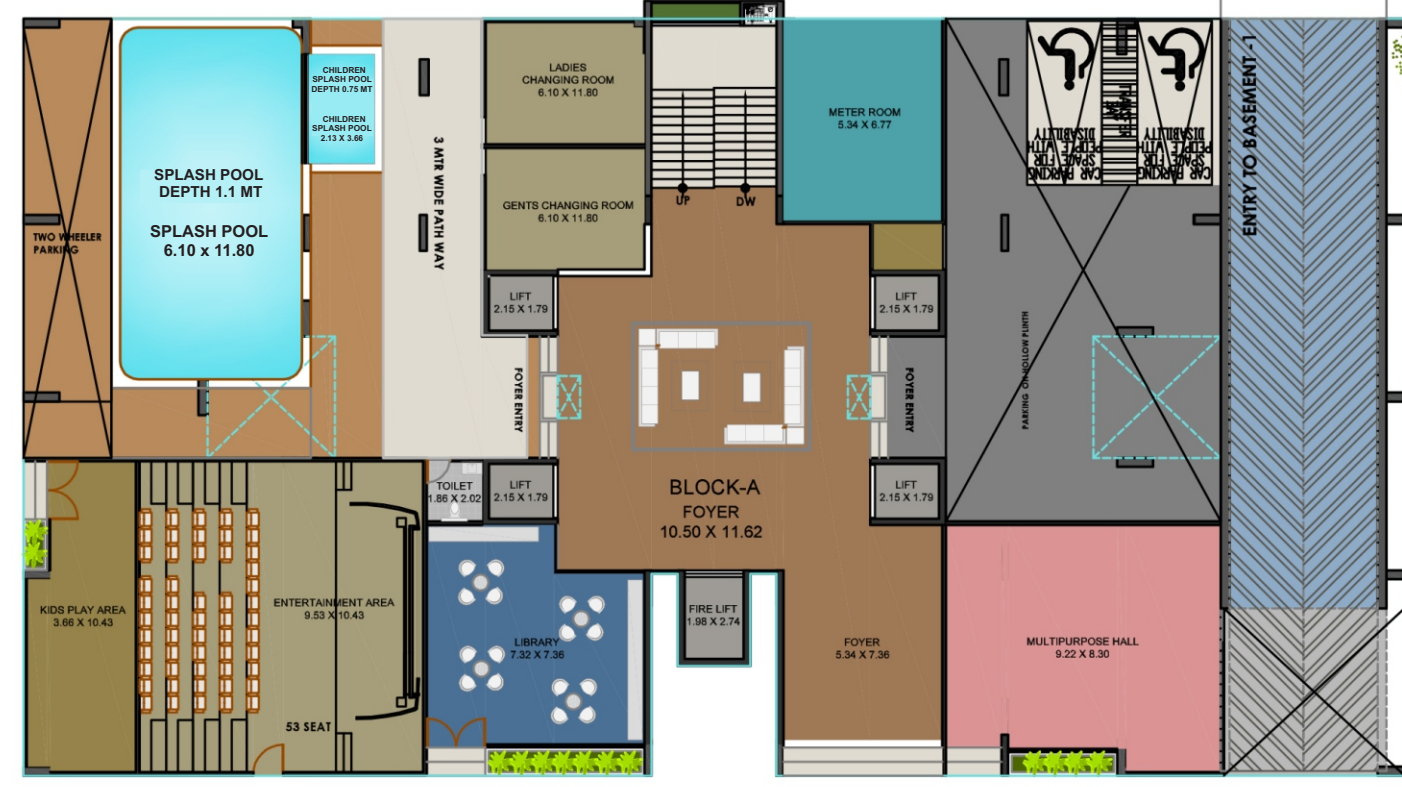
6.00 MT DRIVEWAY

6 MTR PLATFORM

24.00 MT WIDE ROAD

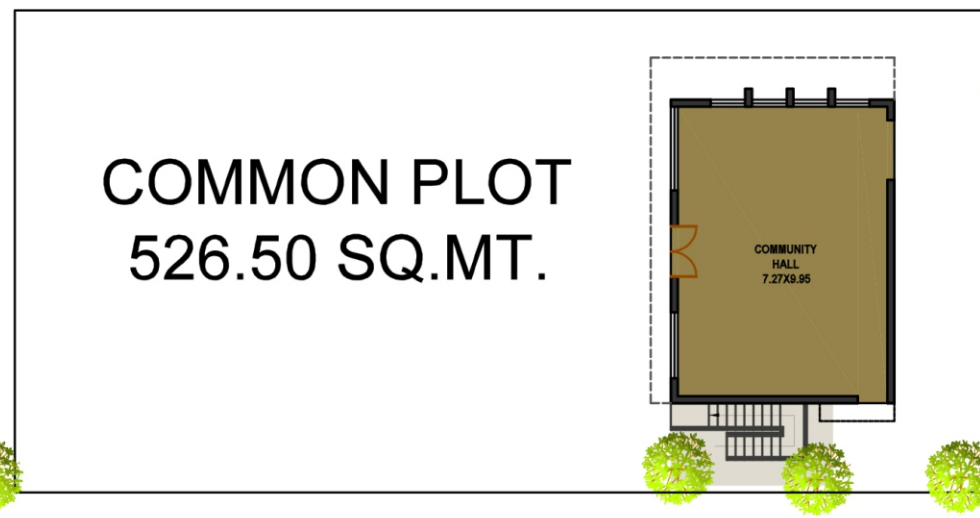
EXIT

SECURITY CABIN



6.00 MT DRIVEWAY

6.00 MT DRIVEWAY



6.00 MT DRIVEWAY

## GROUND FLOOR LAYOUT

# 18.00 MT WIDE ROAD

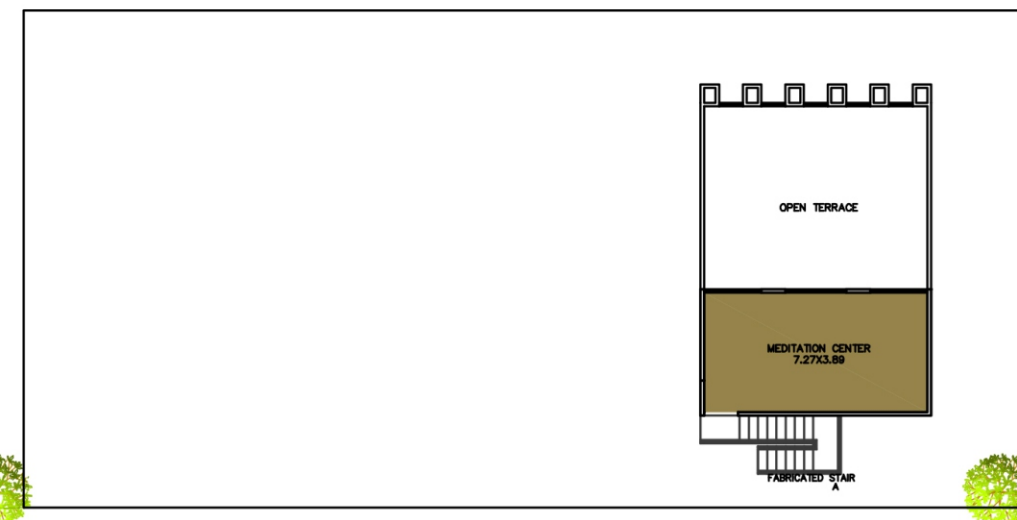
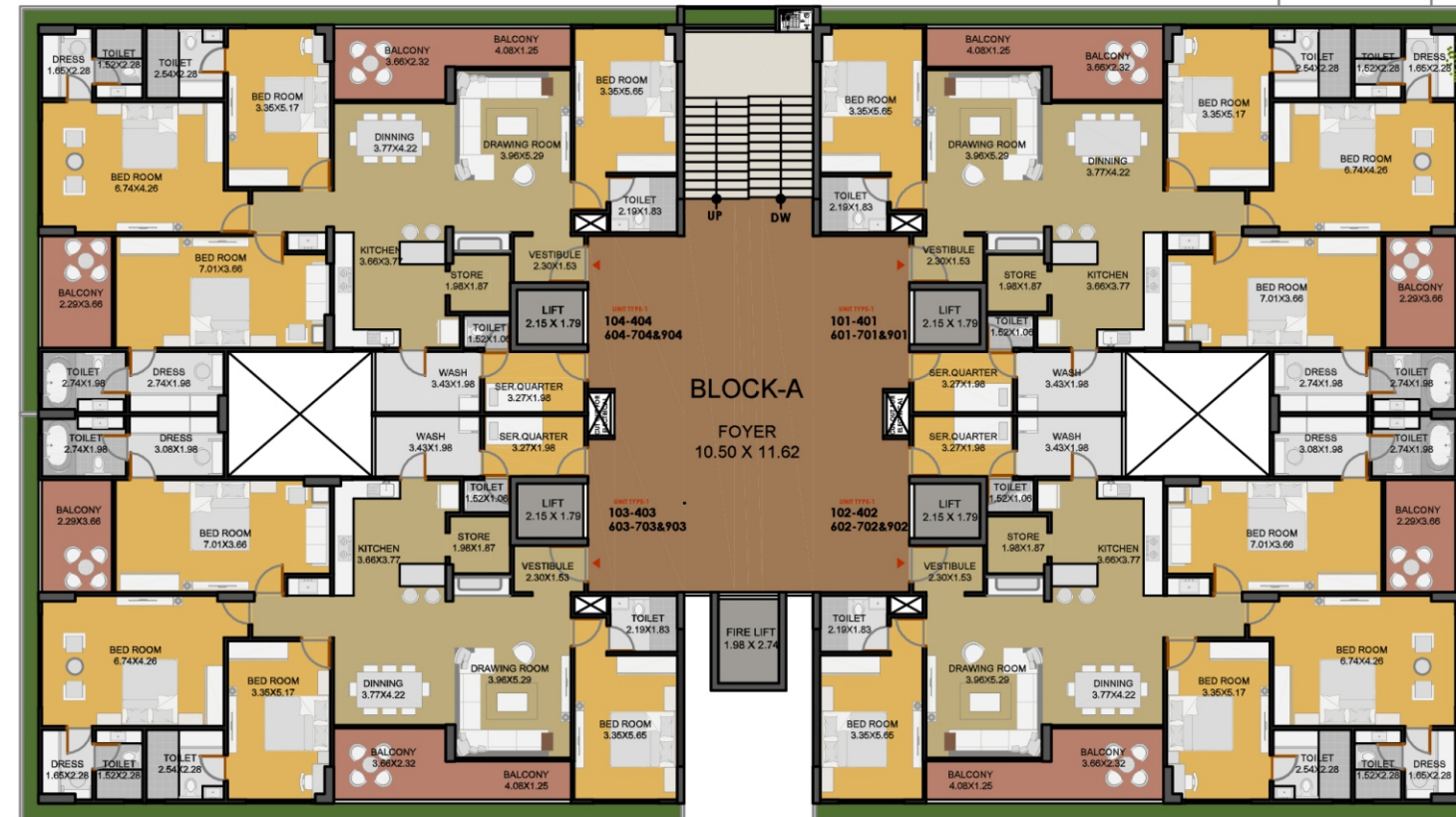
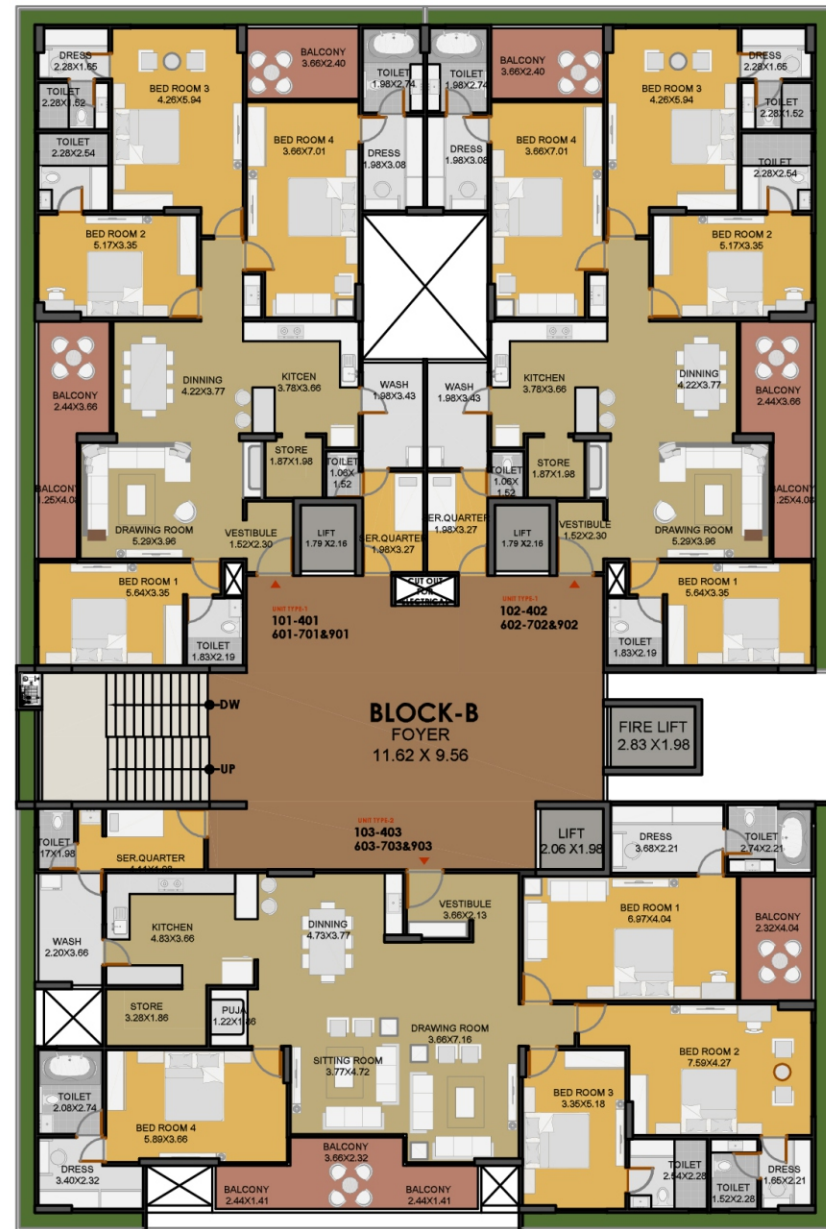
6.00 MT DRIVEWAY

9.00 MT DRIVEWAY

6.00 MT DRIVEWAY

6.00 MT DRIVEWAY

24.00 MT WIDE ROAD



1ST , 2ND , 3RD , 4TH , 6TH , 7TH , 9TH FLOOR

# 18.00 MT WIDE ROAD



REFUGE FLOOR 5TH & 8TH FLOOR PLAN



# 18.00 MT WIDE ROAD

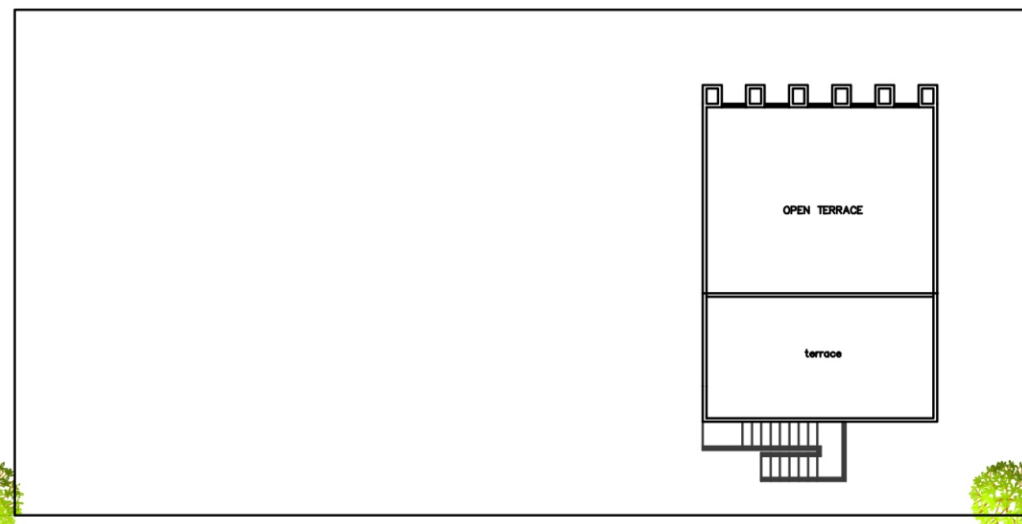
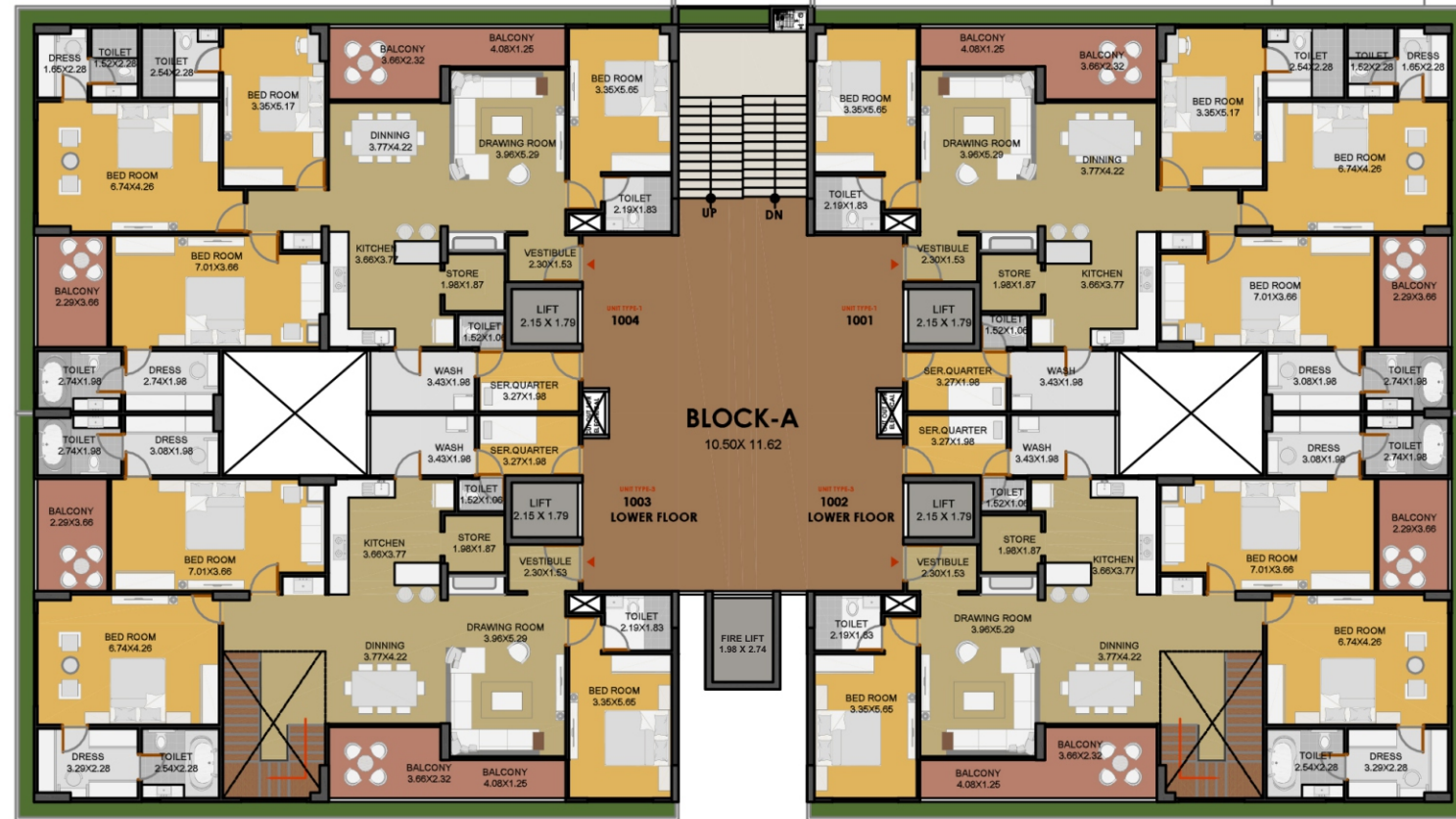
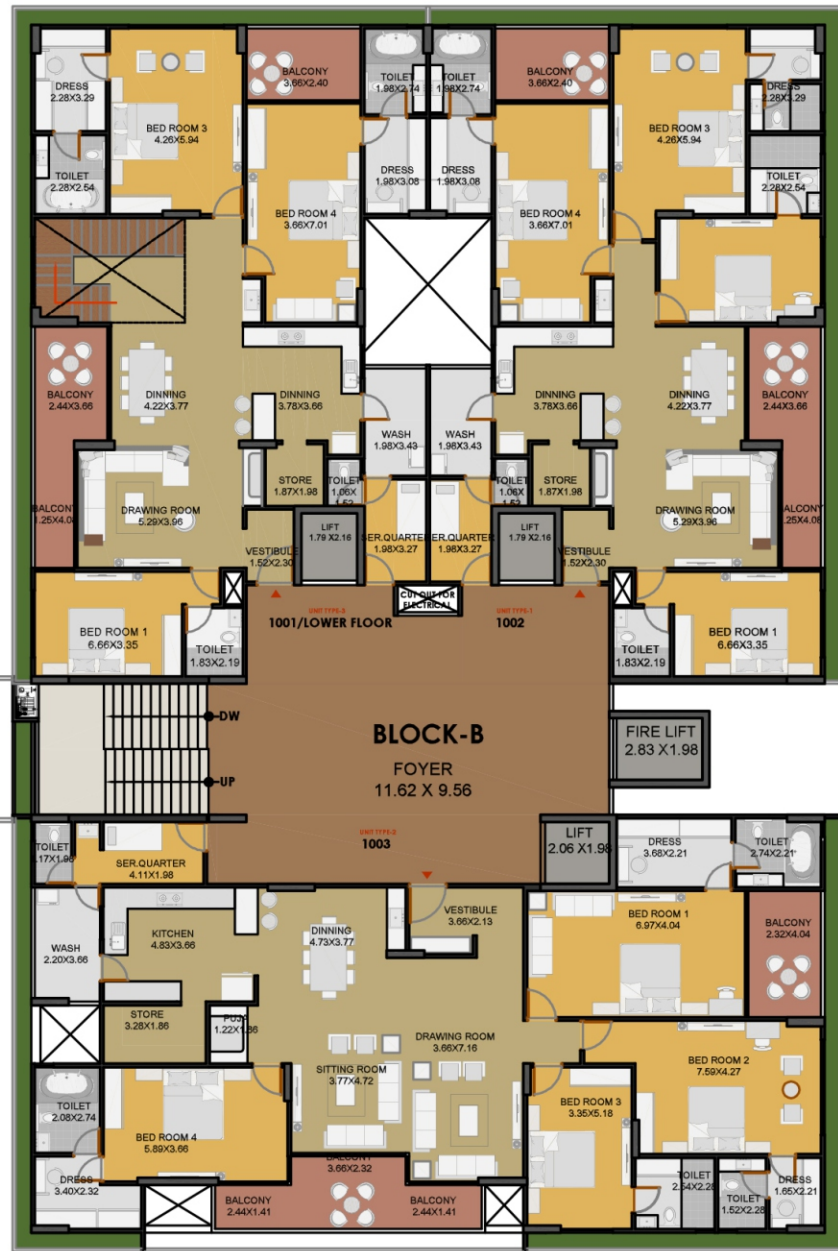
6.00 MT DRIVEWAY

9.00 MT DRIVEWAY

6.00 MT DRIVEWAY

6.00 MT DRIVEWAY

24.00 MT WIDE ROAD



## 10TH FLOOR LAYOUT

# 18.00 MT WIDE ROAD

6.00 MT DRIVEWAY

ENTRY

EXIT

6.00 MT DRIVEWAY

24.00 MT WIDE ROAD

6.00 MT DRIVEWAY

## 11TH FLOOR LAYOUT

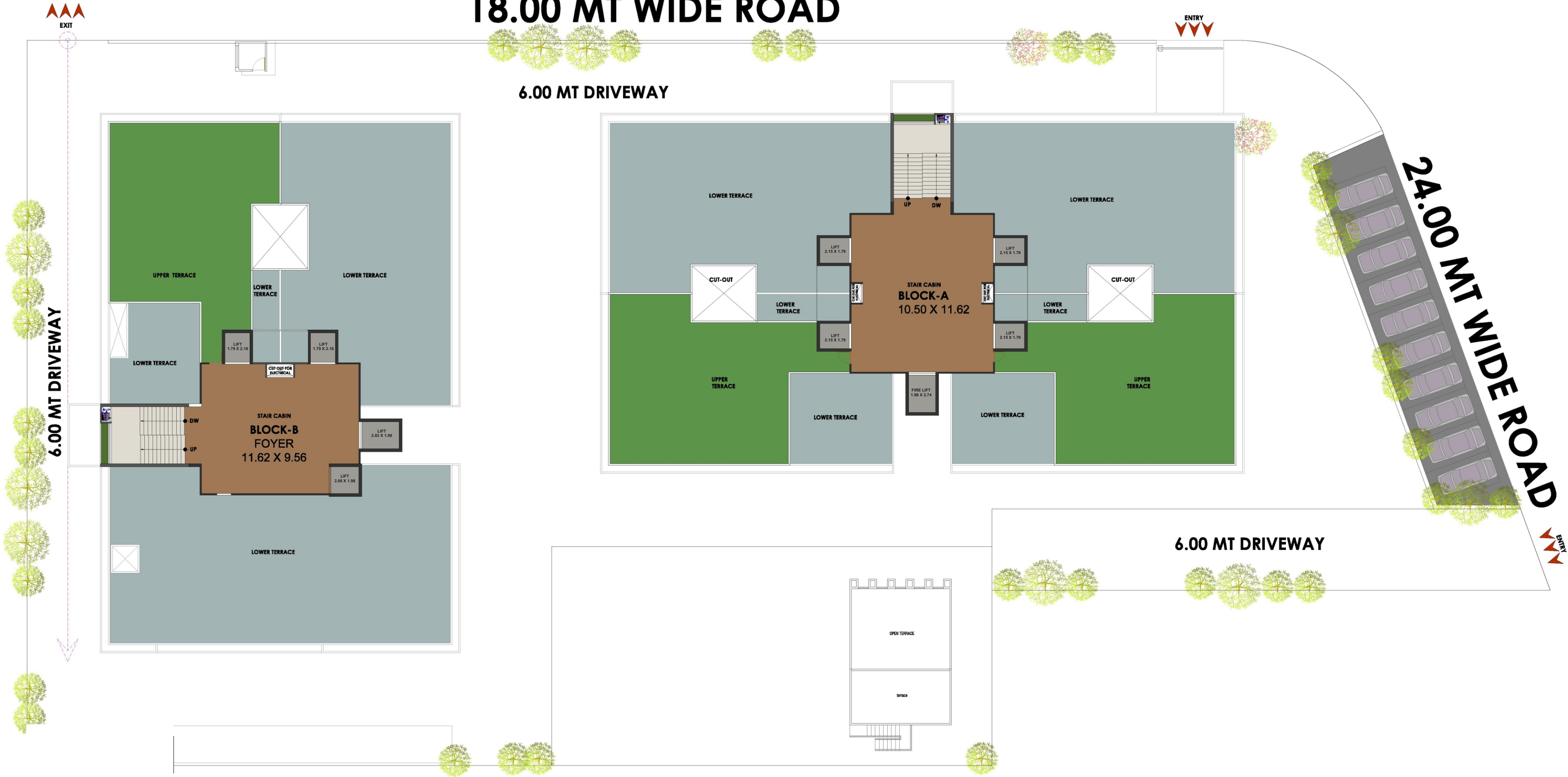


# 18.00 MT WIDE ROAD

6.00 MT DRIVEWAY

ENTRY

24.00 MT WIDE ROAD



## TERRACE LAYOUT

# TYPICAL UNIT PLAN 4 BHK TYPE 2

**BLOCK - B**      **103 TO 1003**



# TYPICAL UNIT PLAN 4 BHK TYPE 1

BLOCK - A	101 TO 1001	102 TO 902	103 TO 903	104 TO 1004
BLOCK - B	101 TO 901	102 TO 1002	-	-

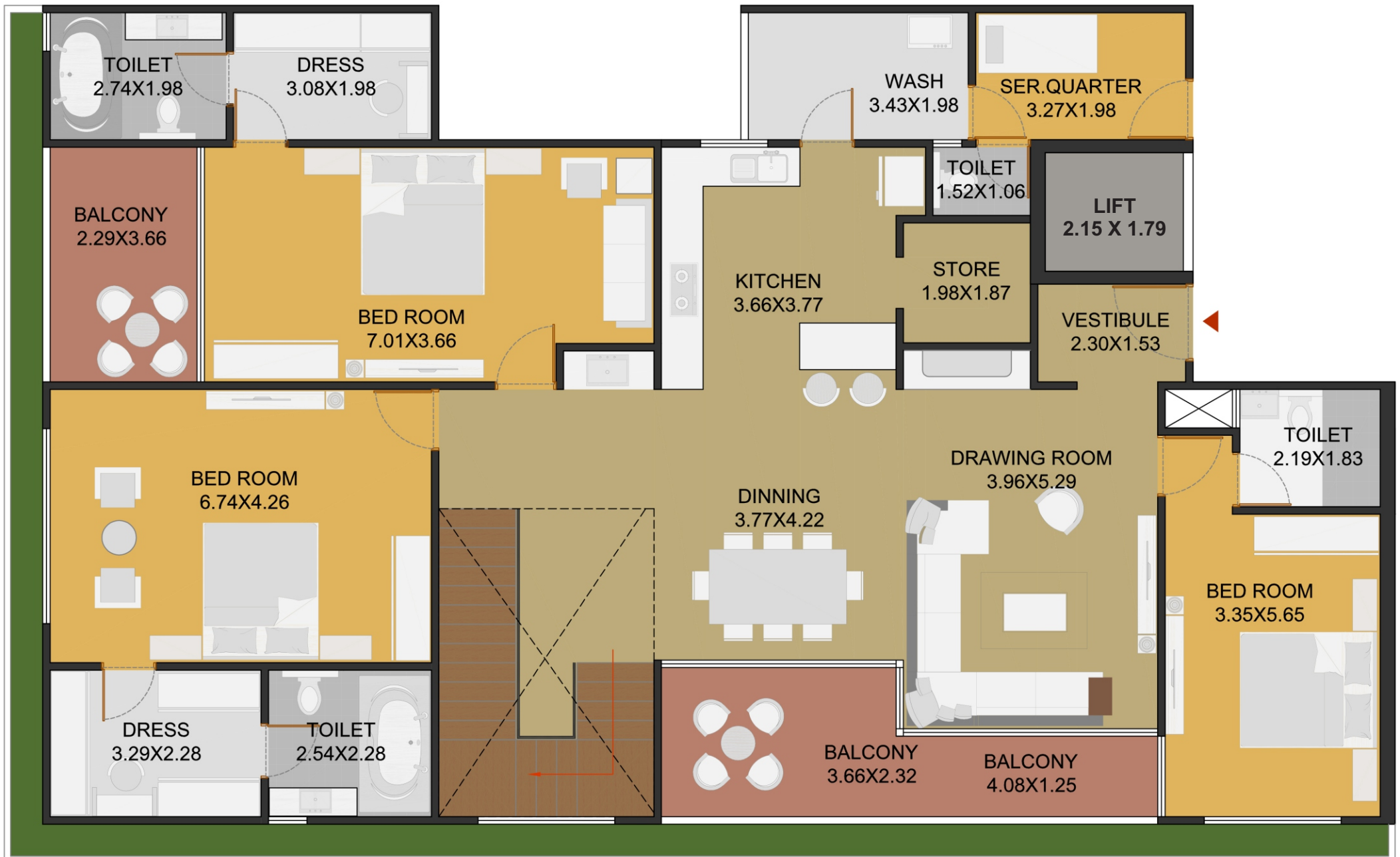


# TYPICAL PENT HOUSE LOWER FLOOR UNIT PLAN

BLOCK - A

1002

1003



# TYPICAL PENT HOUSE UPPER FLOOR UNIT PLAN

BLOCK - A

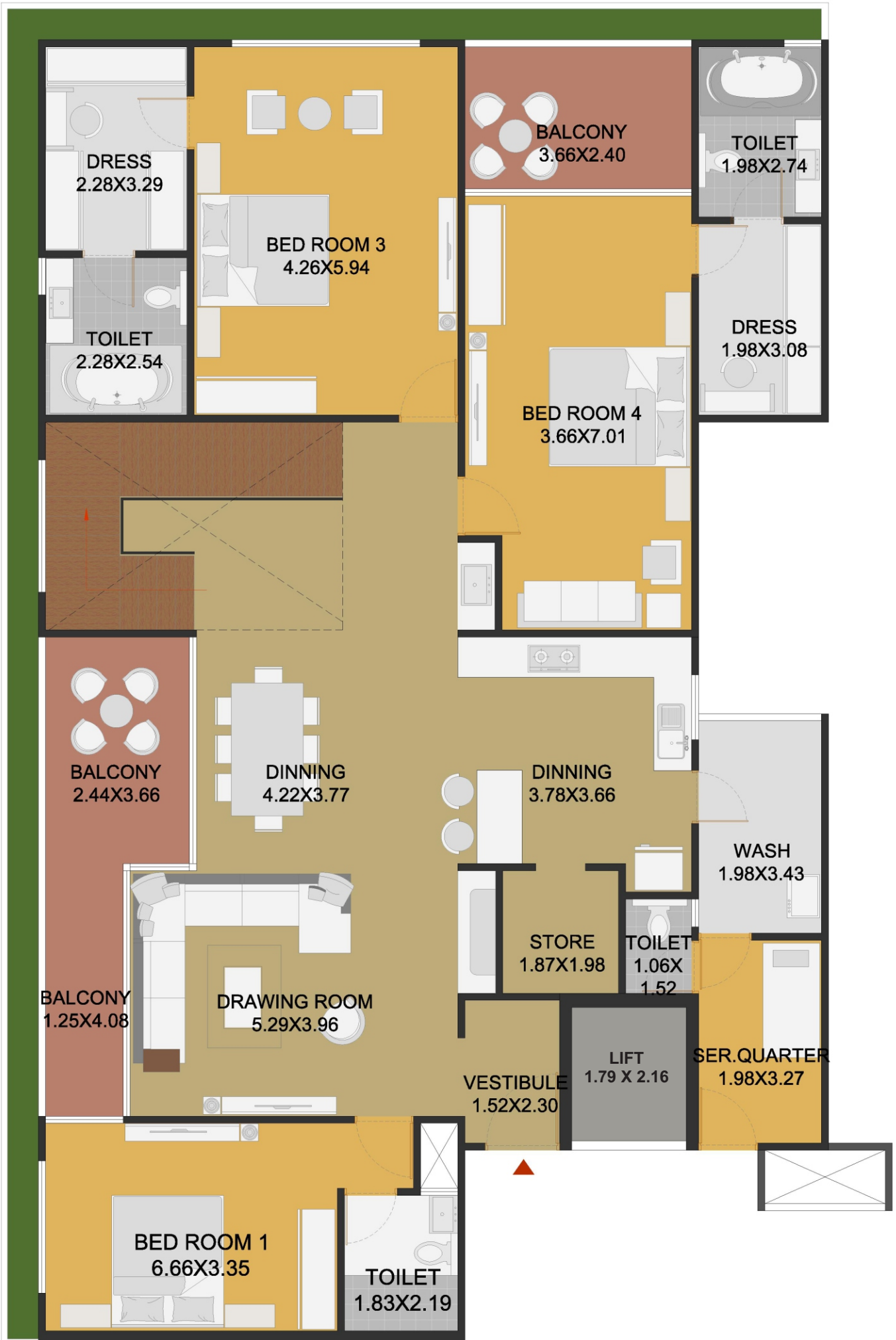
1002

1003



# TYPICAL PENT HOUSE LOWER FLOOR UNIT PLAN

<b>BLOCK - B</b>	<b>1001</b>
------------------	-------------





# TYPICAL PENT HOUSE UPPER FLOOR UNIT PLAN

BLOCK - B	1001	-
-----------	------	---





# The PALLADIA

4 & 5 BHK OPULENT LIVING



## SPECIFICATIONS



### STRUCTURE

- Earthquake resistant structure as per seismic design.



### FINISHES

- Exterior : Double coat male plaster with texture paint.
- Interior : Single coat male plaster with white putty finish.



### FLOORING

- Premium quality tiles flooring in drawing, living and bedrooms. Kota, Marble or Tiles flooring in wash area. Anti-skid flooring in bathrooms.



### DOORS AND WINDOWS

- Decorative main door with wooden framing with laminate or veneer finish. Powder coated/anodized aluminum section windows.



### ELECTRIFICATION

- 3 phase concealed ISI wiring with premium quality modular switches.
- Wi-fi provision in each flat. Provision of earth-leakage circuit breaker.



### PLUMBING AND SANITARY

- Concealed plumbing with premium quality pipes and fittings for water supply and drainage. A common bore-well and distribution system will be installed for continuous water supply. All bath/toilet/sanitary fitting will be of premium brands. Arrangement for washing machine and dishwasher.



### TERRACE

- Open Terrace finished with suitable water-proofing and china mosaic for heat reflection.



### APARTMENT FOYER

- Decorative foyer with name plates and flat numbering.
- Branded automatic lifts with life foyer.



### PARKING AND INTERNAL ROADS

- Ample parking space for all residence and visitors. Distinctively designed internal roads. Decorative lobby with name plates, flat numbers and letter-box for each flat.



### SECURITY

- Secured CCTV surveillance system in entire premises. Video-door-phone-system with intercom system. Entrance gate with security cabin.



## SALIENT FEATURES

- Well planned 4 & 5 BHK flats
- Lift with auto door
- Lower & Upper level parking.
- Exclusive entrance lobby with rich finishing.
- 24/7 Hi - Tech security with CCTV cameras.
- Power backup generator set for common areas, elevators and garden.
- Beautiful landscaping.
- Pleasant sit - outs.
- Attractive children play area.



# KEY PLAN



*The* **PALLADIA**  
4 & 5 BHK OPULENT LIVING

POWER BY:



*The*   
**PALLADIA**  
4 & 5 BHK OPULENT LIVING

**SITE ADDRESS :**

Survey no, 206/002, Opp Shree Rang Nano City,  
Palm Road, Sargasan, Gandhinagar.

**CONTACT :**

+91 91043 67515, 91044 67515

**Email:** [mkbuidcon206@gmail.com](mailto:mkbuidcon206@gmail.com)

**ARCHITECT**



**STRUCTURE**

**BLUE SKYZ**  
BHAVIK PATEL

**RERA NO.:**

**RERA NO.:** [www.gujrera.gujarat.gov.in](http://www.gujrera.gujarat.gov.in)