



Avyanna

- a Project by -



SITE OFFICE ADDRESS - KUMBH INFRASTRUCTURE

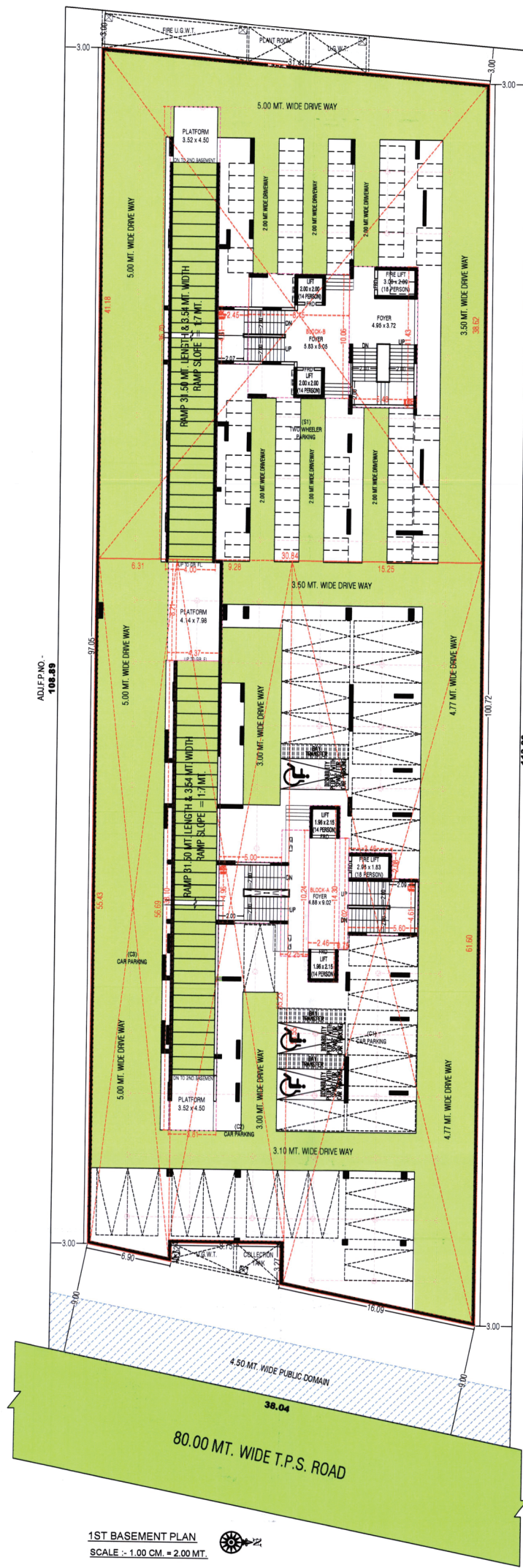
PDPU - K Raheja, 80 Meter Road,
Opp. Koba Metro Station, Koba - Gandhinagar.

Contact Number +91 99 04 88 88 03

Every **STOREY** Tells,
It's Own Unique **STORY.**



Proposed Apartment Scheme at Koba - Gandhinagar



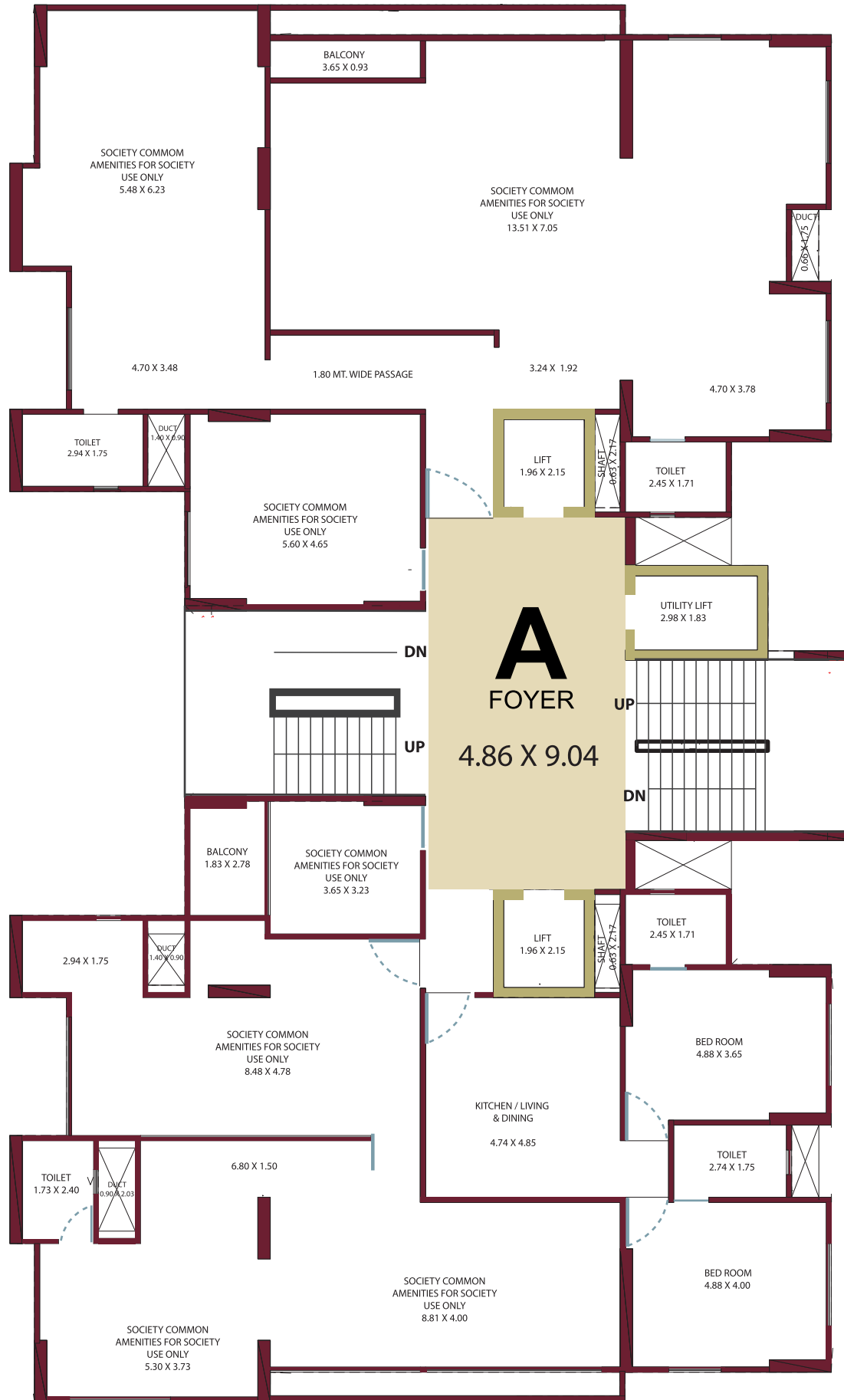
ADJ.F.NO. -
108.89

113.26
ADJ.E.D.M.

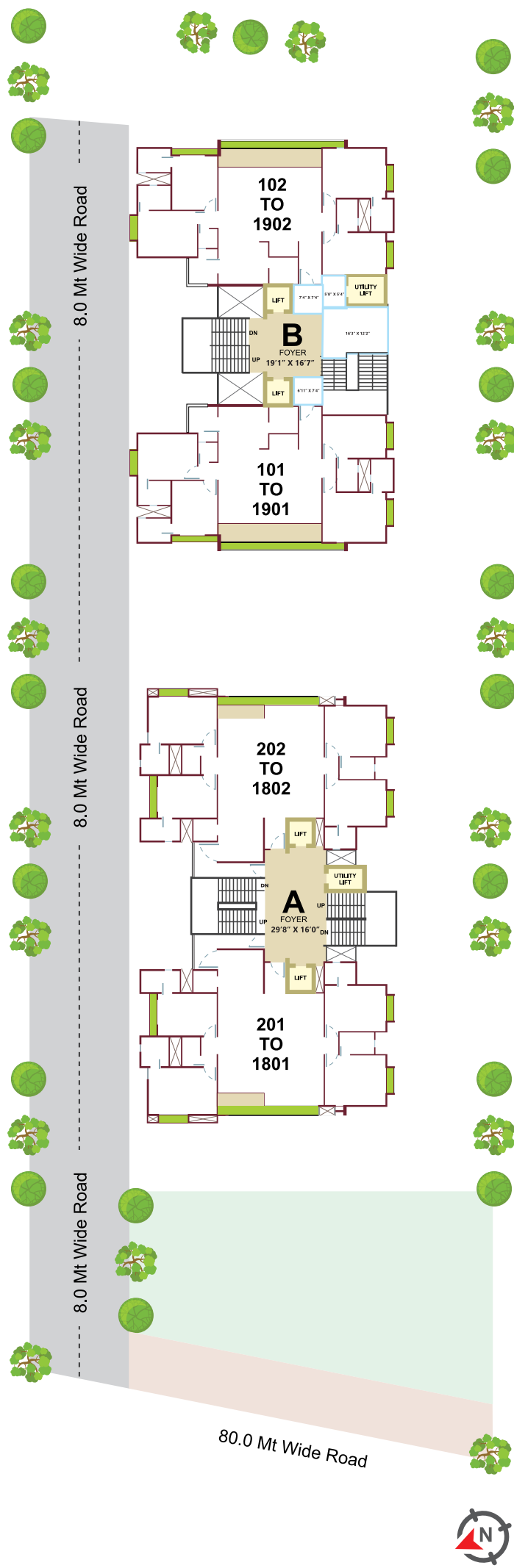
1ST BASEMENT PLAN
SCALE :- 1.00 CM. = 2.00 MT.



TYPE - A BLOCK 4 BHK (1st Floor)



Proposed Apartment Scheme at Koba - Gandhinagar



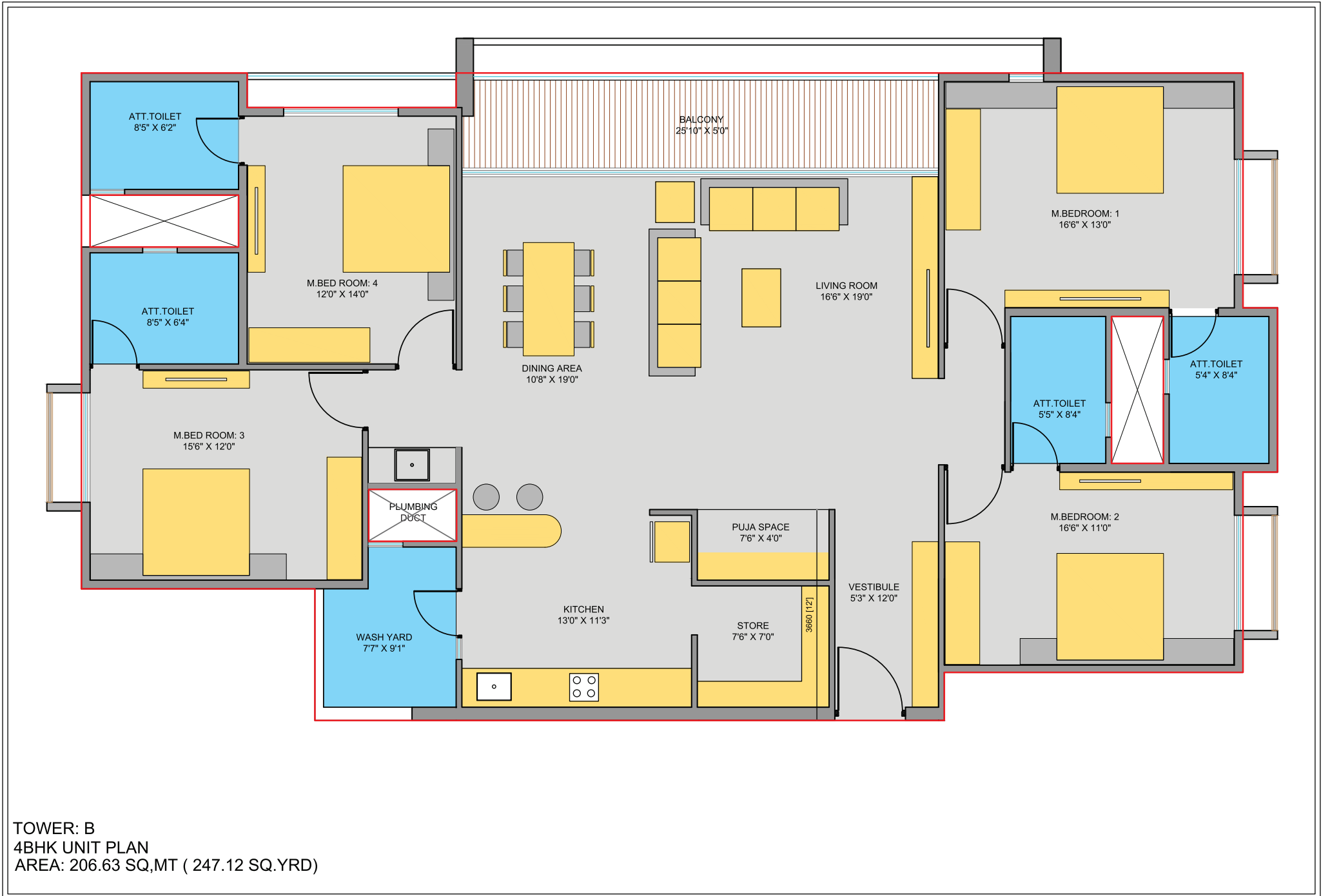
TYPE - A BLOCK 4 BHK

(2nd to 17th Floor)



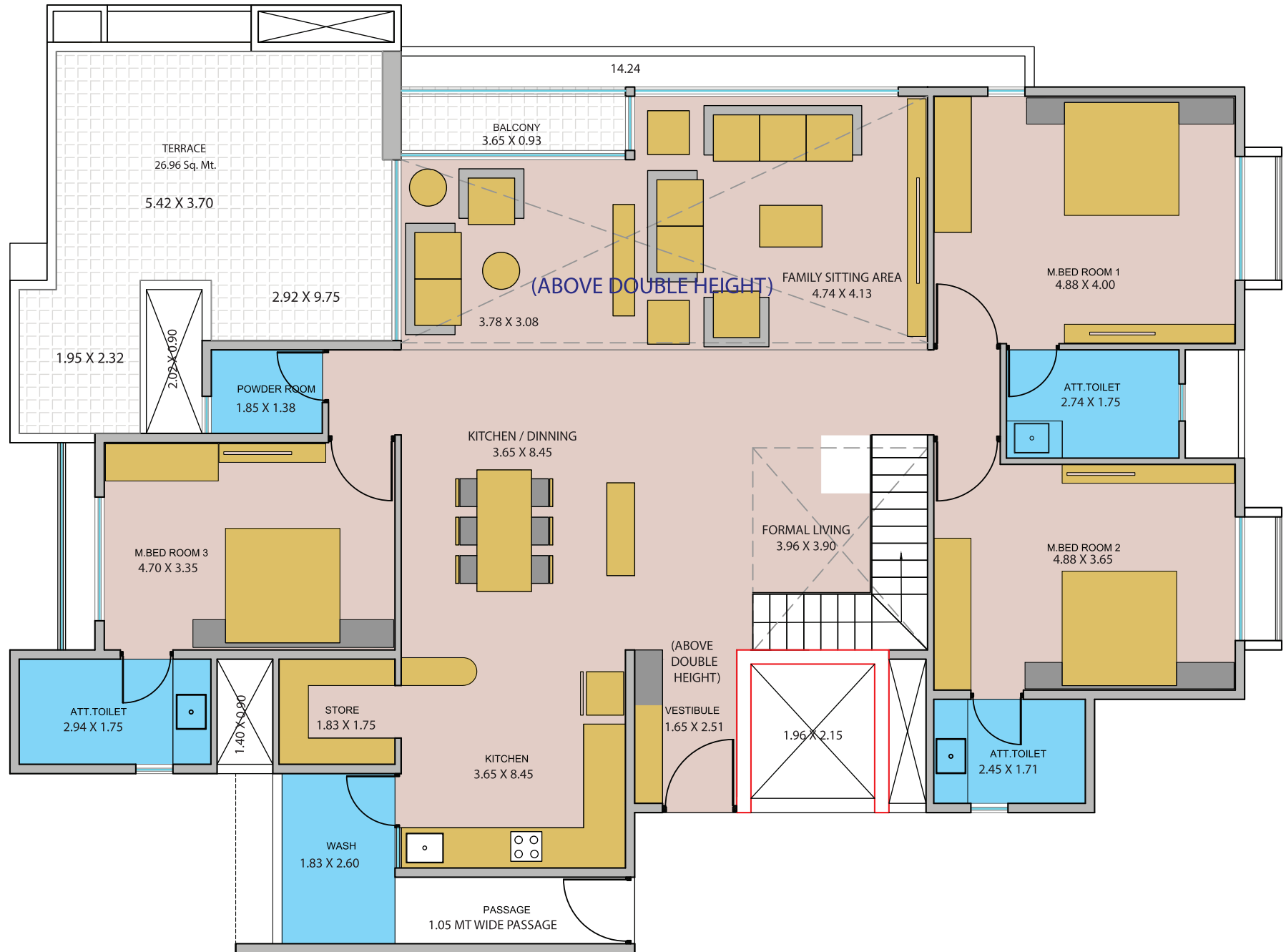
TYPE - B BLOCK 4 BHK

(1st to 18th Floor)



TYPE - A BLOCK 5 BHK PENTHOUSE

(18th Floor - Lower Level)



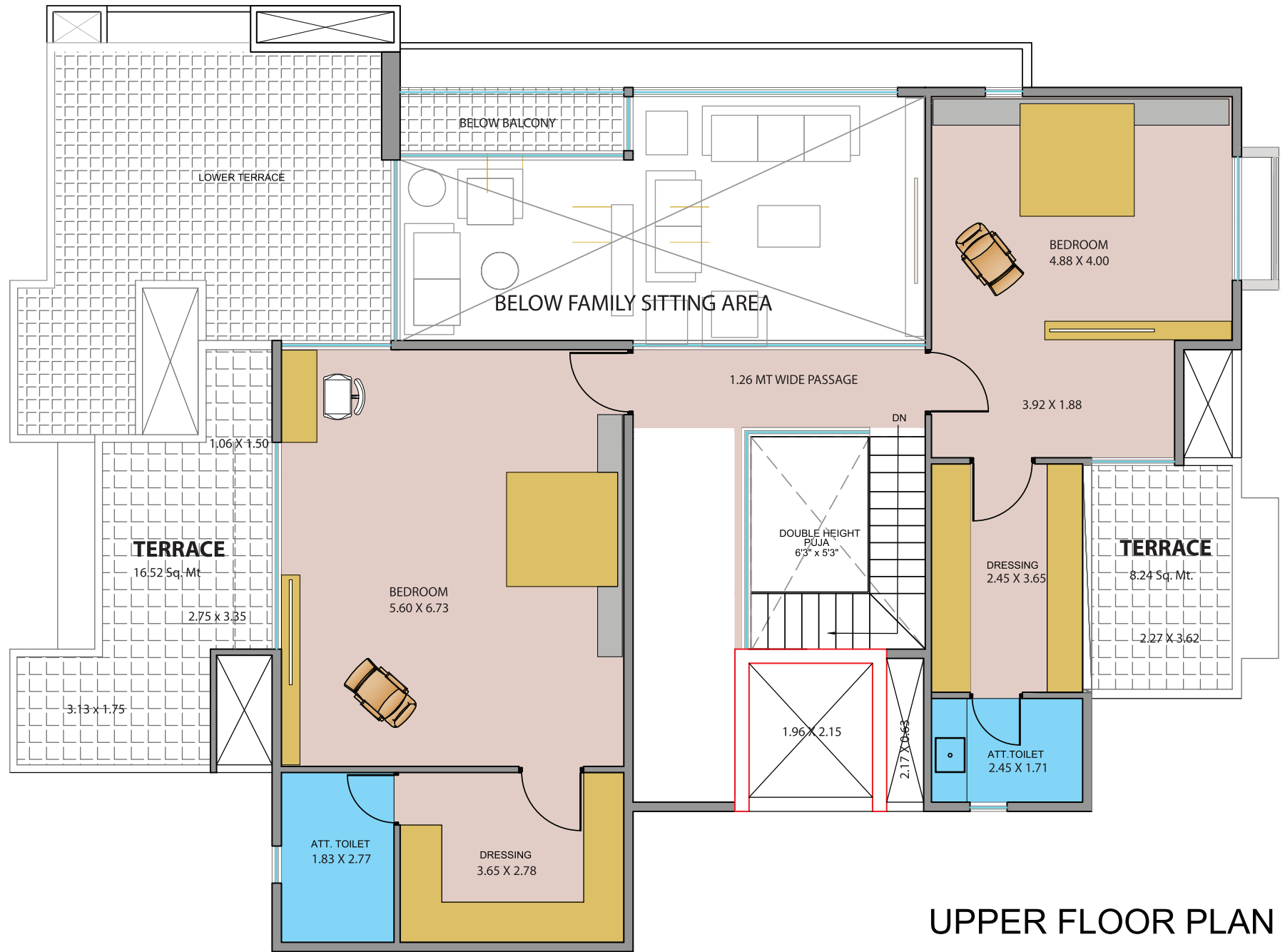
Proposed Apartment Scheme at Koba - Gandhinagar

TOWER: A
5 BHK DUPLEX PLAN

LOWER FLOOR PLAN

TYPE - A BLOCK 5 BHK PENTHOUSE

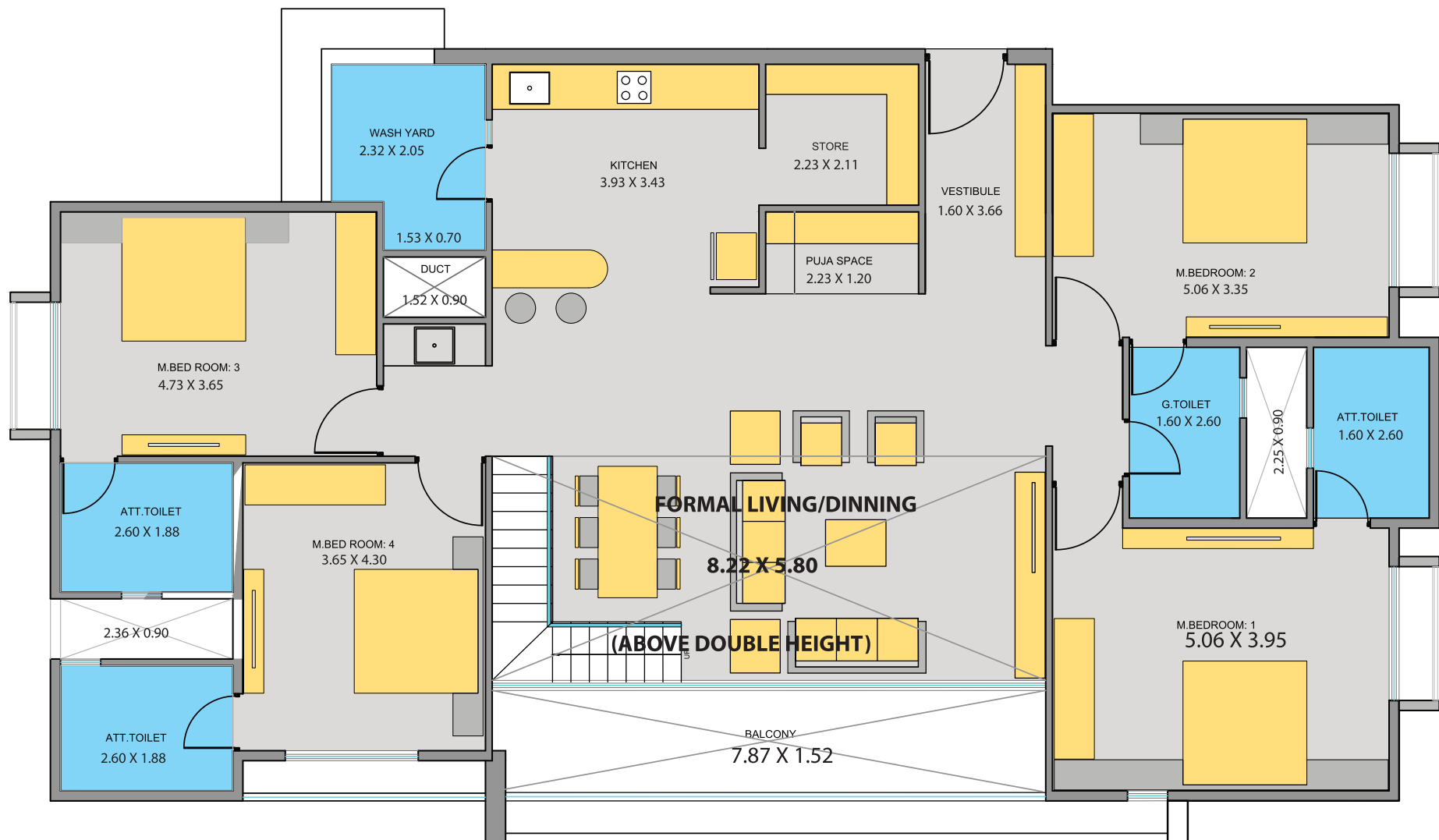
(18th Floor - Upper Level)



UPPER FLOOR PLAN

TYPE - B BLOCK 6 BHK PENTHOUSE

(19th Floor - Lower Level)

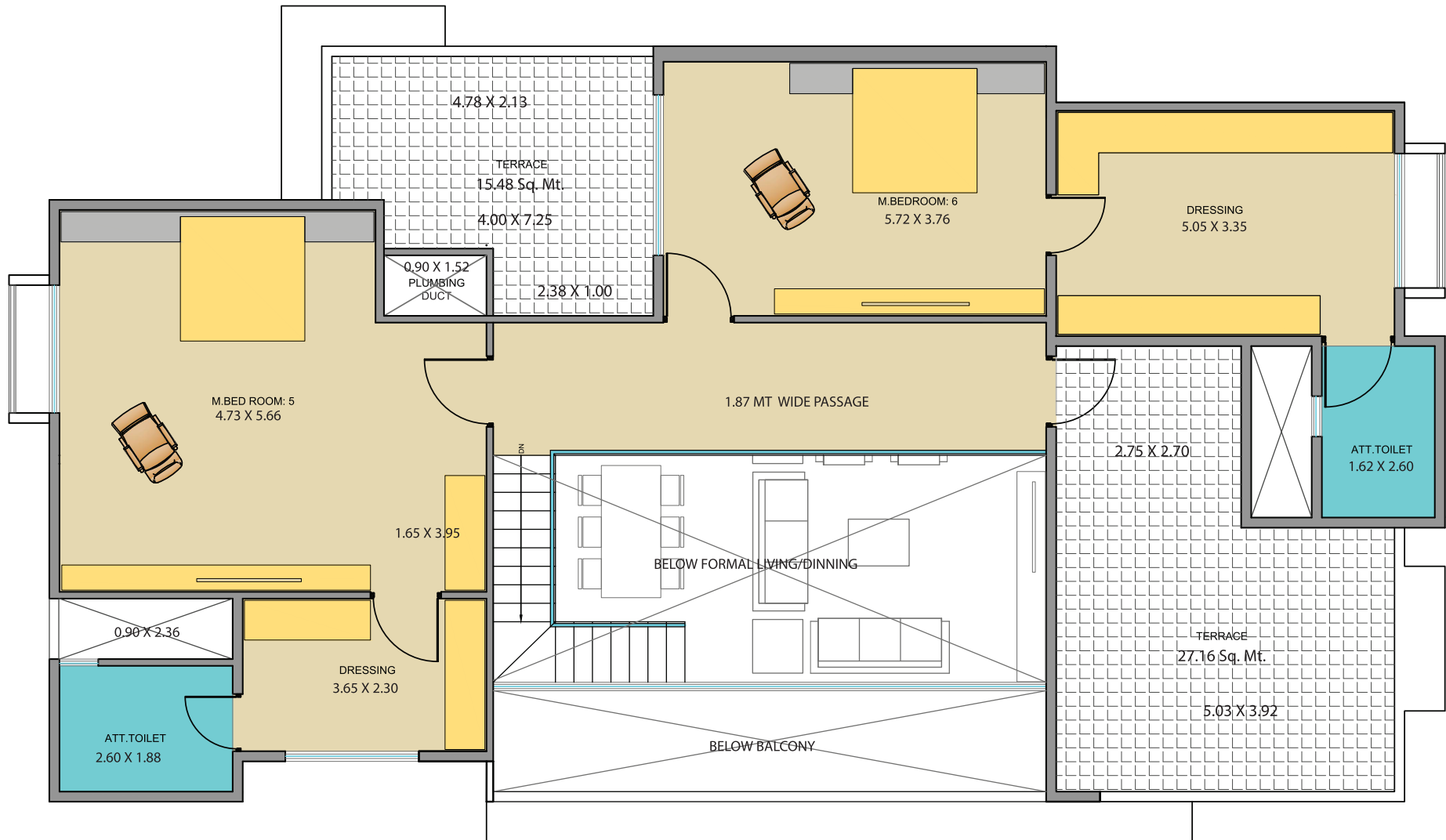


TOWER: B
6 BHK DUPLEX PLAN

LOWER FLOOR PLAN

TYPE - B BLOCK 6 BHK PENTHOUSE

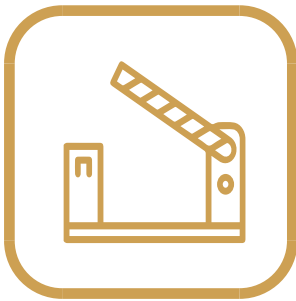
(19th Floor - Upper Level)



UPPER FLOOR PLAN

LIFESTYLE

AMENITIES



GATED
ENTRANCE



DECORATIVE
FOYER



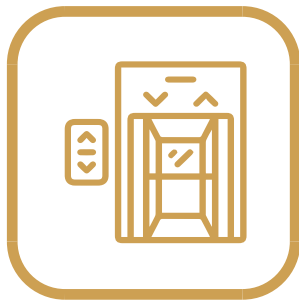
FIRE
SAFETY



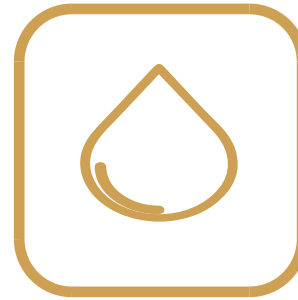
POWER
BACKUP



DESIGNER
COMPOUND WALL



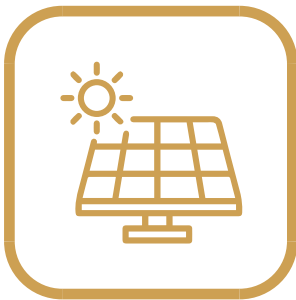
3 AUTOMATIC ELEVATORS
IN EACH BLOCK



24 HOUR
WATER SUPPLY



VASTU
COMPLIANT



SOLAR
PANEL



CCTV
CAMERAS

SPECIFICATION



STRUCTURE

Quality controlled RCC frame structure with best material component.

WALLS

Internal chant masala plaster with double coat Putty and External walls with Mala/Sand faced plaster with Acrylic paint.

FLOORS

Premium quality vitrified tiles in entire apartment.

DOORS & WINDOWS

Laminate finish main door with Brass/ S.S Fittings & all other doors are flush door. Powder coated/Anodized aluminium sliding windows.

BATHROOM

Premium glazed wall tiles up to lintel level. Good quality CP Fittings, Sanitary ware & Accessories. Provision for Geyser.

KITCHEN

Granite Platform with S.S sink. Designer tiles up to lintel level. Stone rack in store. Provision of Water purifier, Gas line, Microwave oven, Refrigerator point.

PLUMBING

Corrosion free and leak proof CPVC/UPVC pipes and fittings. PVC pipes for drainage & rain water.

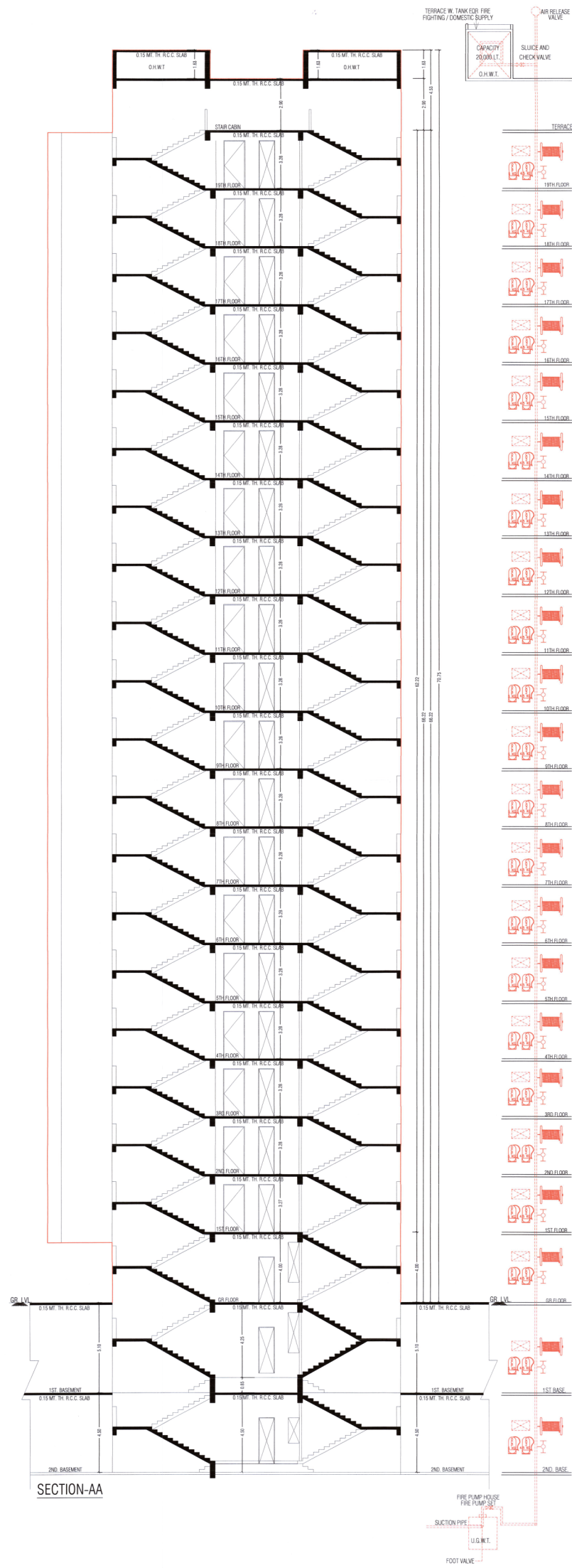
WATER PROOFING

China mosaic/ Ceramic tiles in terrace for water proofing & heat resistance.

ELECTRIFICATION

3 phase concealed copper wiring with modular fittings & ELCB / MCB. Adequate points in all rooms.

Proposed Apartment Scheme at Koba - Gandhinagar



LOCATION MAP



- a Project by -



SITE OFFICE ADDRESS - KUMBH INFRASTRUCTURE

PDPU - K Raheja, 80 Meter Road,
Opp. Koba Metro Station, Koba - Gandhinagar.

Contact Number +91 99 04 88 88 03

Rera No. _____

www.gujrera.gujarat.gov.in

**Disclaimer: The brochure is for internal use, strictly not for marketing purpose.
All specifications, sizes and layouts are tentative & subject to such variations,
additions and modifications as decided by Architects or by the Developers.**