

3 BHK  
HIGHER  
LIVING

SILVER COIN

THE HIGH LIFE AWAITS YOU



# SILVER COIN

THE HIGH LIFE AWAITS YOU

## PROJECT FEATURES

G + 14 Storeyed residential tower with 56 flats

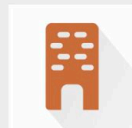
Thoughtfully planned 3 BHK residences

Located amidst the serene surroundings of Paldi

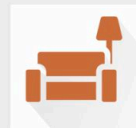
At the central zone of Ahmedabad

## EMBRACE THE GLAMOUR OF FINE LIVING

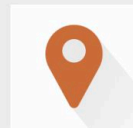
Silver Coin is a home that you've always aspired for your family. Here comfort, luxury and security flawlessly blend with a contemporary lifestyle. It's a benchmark in idyllic living.



Elegant  
Design



Spacious  
Apartments



Excellent  
Location







|

# A MASTERPIECE PROJECT FOR A MODERN LIFE

|

Standing tall like an insignia of class and elegance, these towers are truly exquisite to look at and utterly blissful to inhabit.



SECURITY  
CABIN



CCTV  
SURVEILLANCE



WATER  
SUPPLY



PROVISION FOR  
POWER BACKUP



PROVISION FOR  
SOLAR SYSTEM



FIRE  
SAFETY





SILVER COIN

THE HIGH LIFE AWAITS YOU

INTELLIGENTLY  
PLANNED.  
BEAUTIFULLY BUILT.

A thoughtfully planned residence that anticipates your every desire and elevates your lifestyle. Loaded with finest amenities, it bestows a delightful living experience.

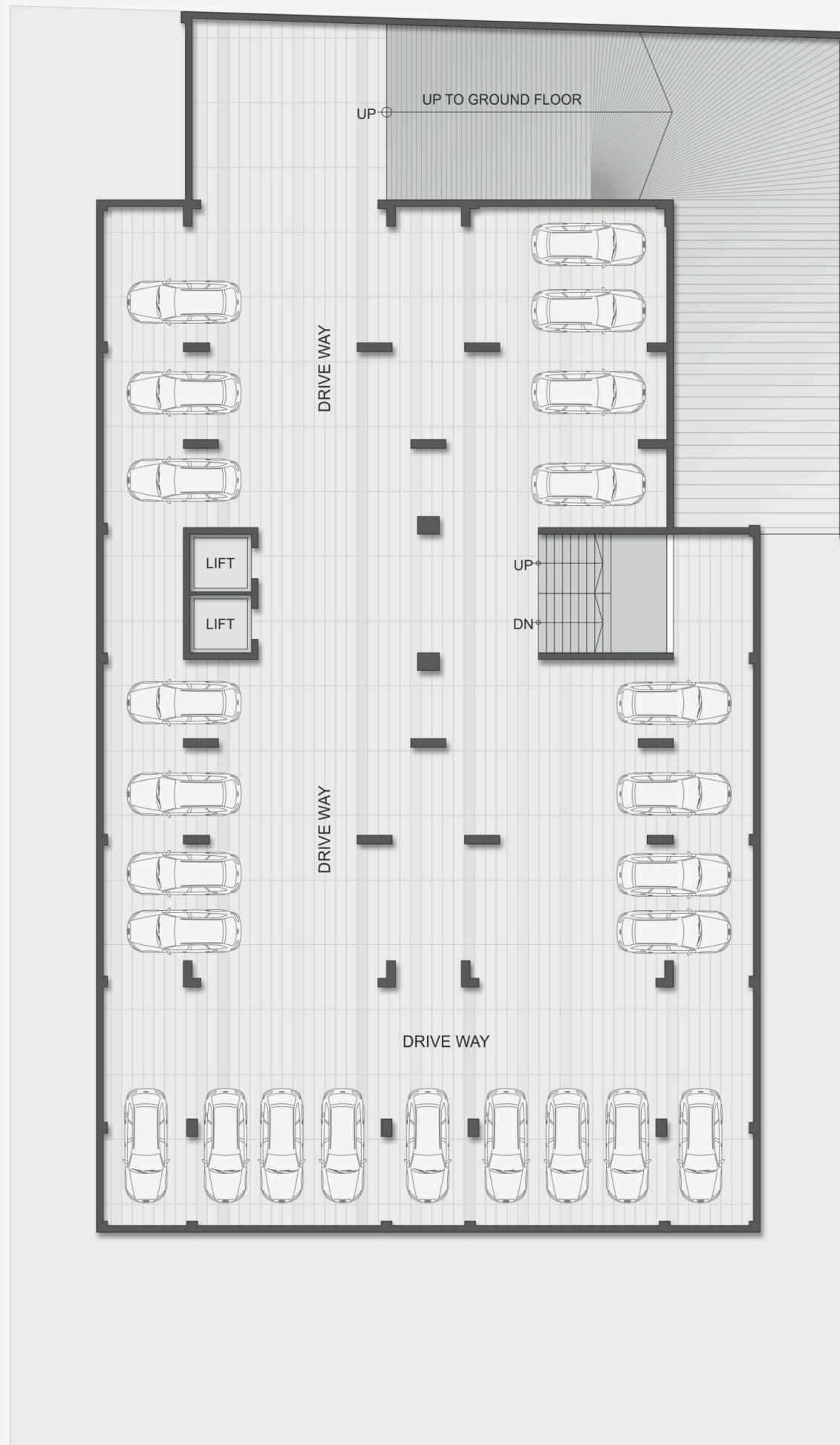


An aerial perspective of a modern, multi-story apartment building with a light beige facade and dark grey accents. The building features balconies with red accents and is surrounded by a dense, lush green landscape with many palm trees. In the foreground, a multi-lane highway with several cars is visible. The overall scene is bright and sunny, suggesting a tropical or subtropical environment.

THIS IS  
AN ADDRESS OF  
YOUR CHOICE

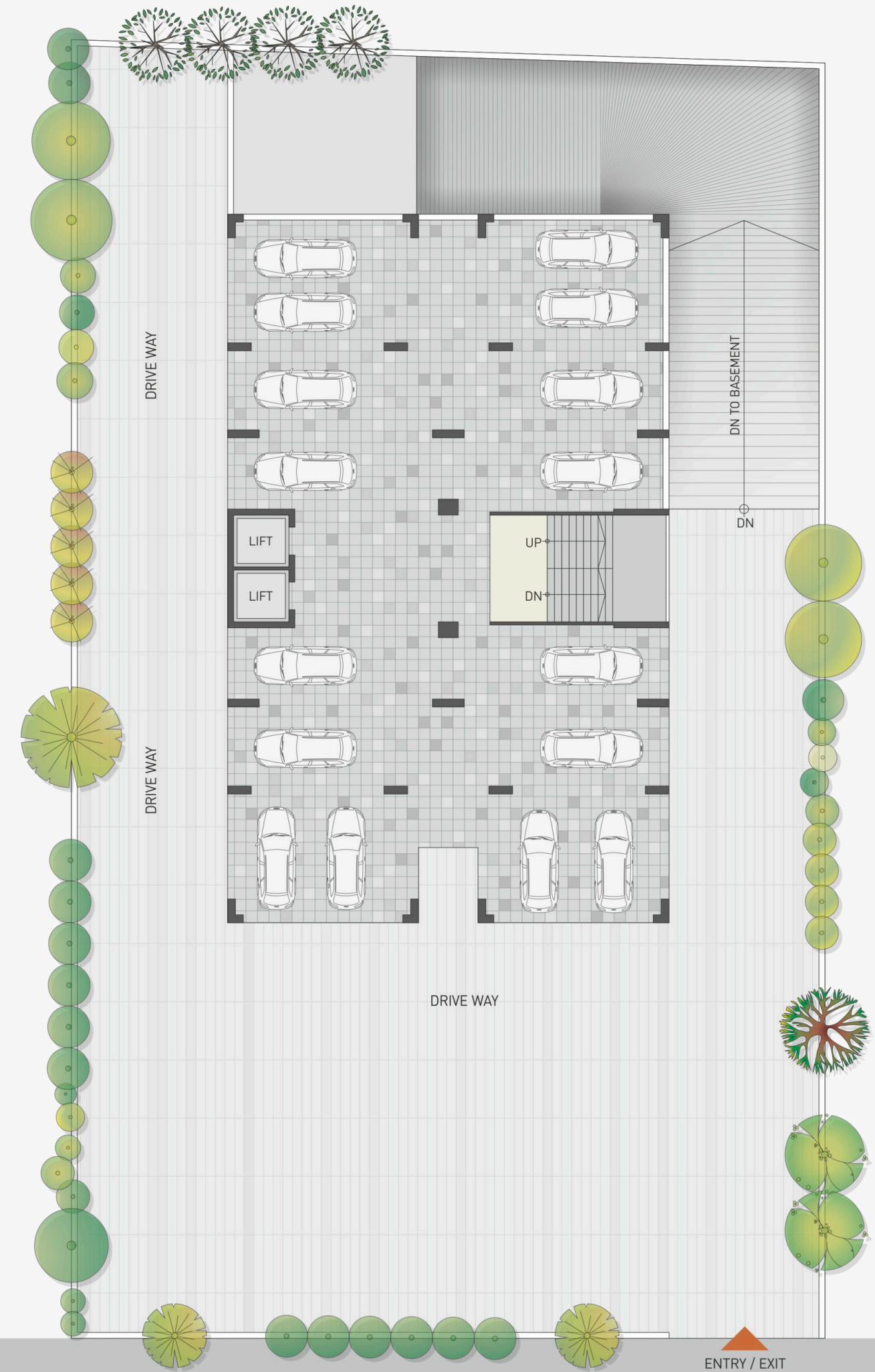


# BASEMENT PLAN



\*Parking displayed is for illustration purpose only.

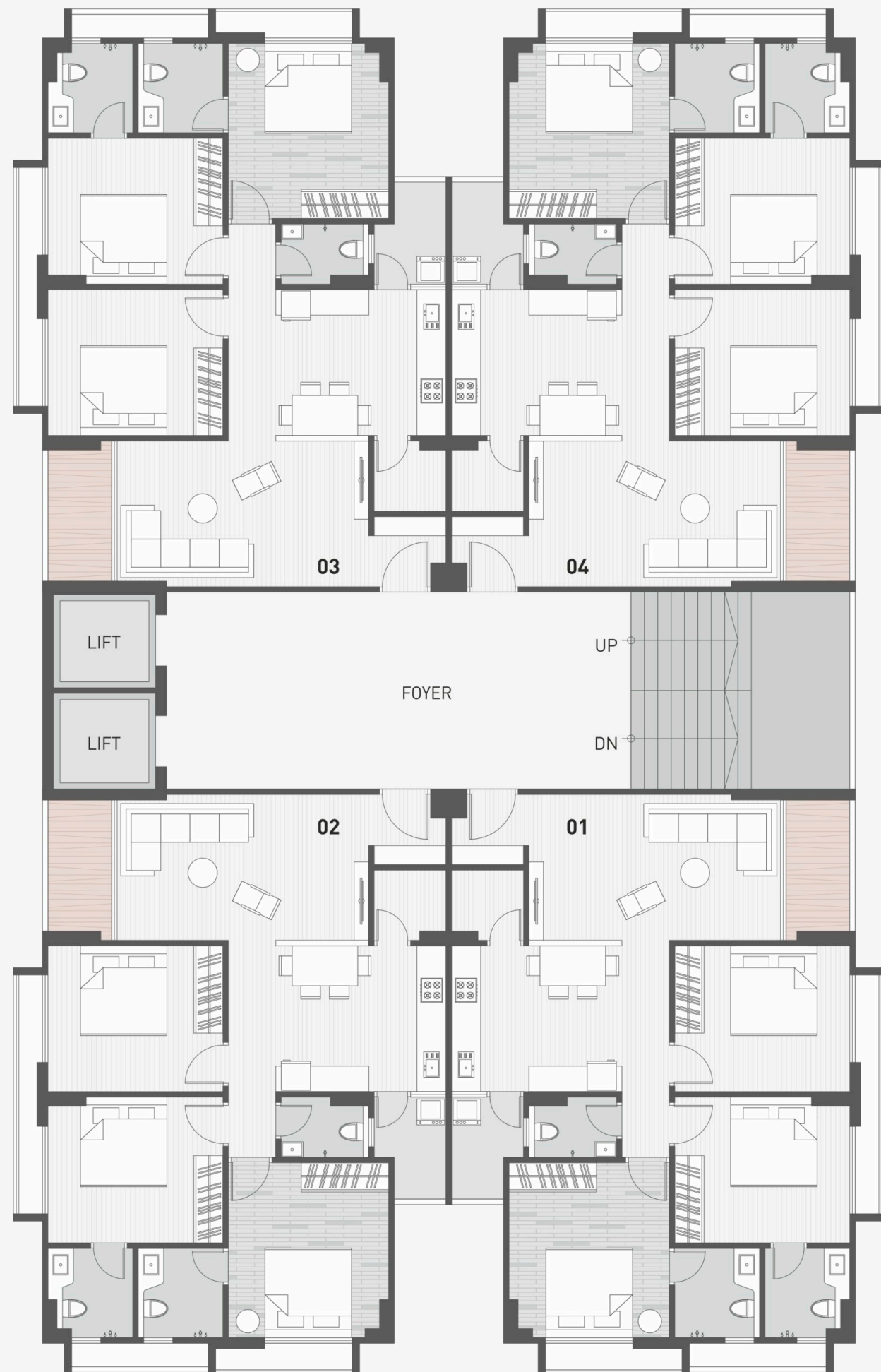
# GROUND FLOOR PLAN



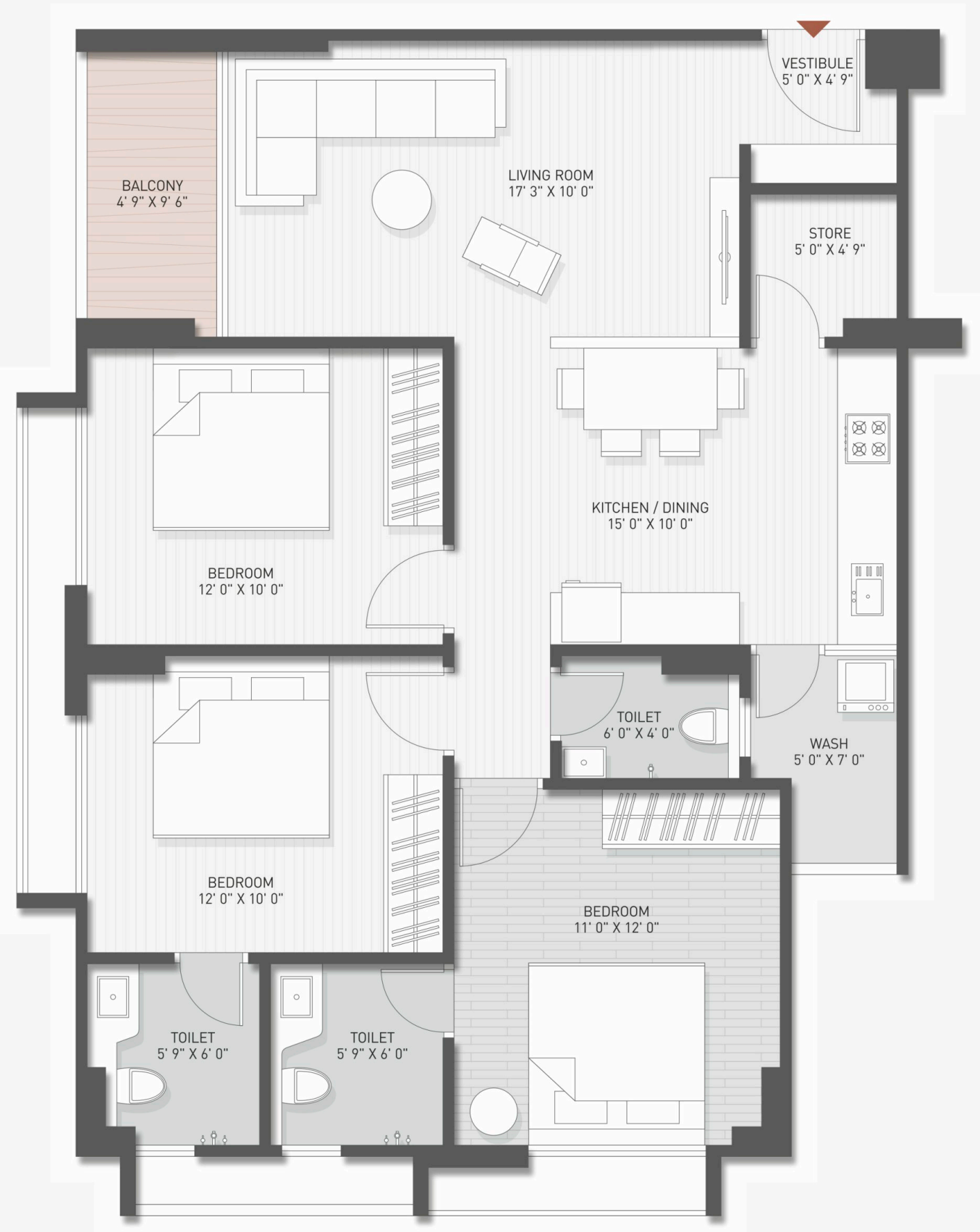
36.60 MT. WIDE T.P. ROAD



TYPICAL FLOOR PLAN



3BHK TYPICAL FLOOR PLAN





# SPECIFICATIONS



**Structure:**  
Earthquake resistant R.C.C. frame structure.



**Flooring:**  
Vitrified tiles in the entire apartment.



**Kitchen:**  
Granite top cooking platform with S.S. sink & glazed tiles dado on platform side wall up to lintel level.



**Doors / Windows:**  
Decorative wooden main entrance door. All other doors of wooden/marble framed with flushed doors. Aluminum windows with powder coating / anodized.



**Toilets:**  
Glazed tiles of leading brand on the floor & dado up to lintel level.



**Plaster:**  
Internal mala plaster with putty finish and external double coat sand face plaster with acrylic water proof paint.



**Plumbing:**  
Concealed plumbing with premium quality bath fitting & sanitary ware.

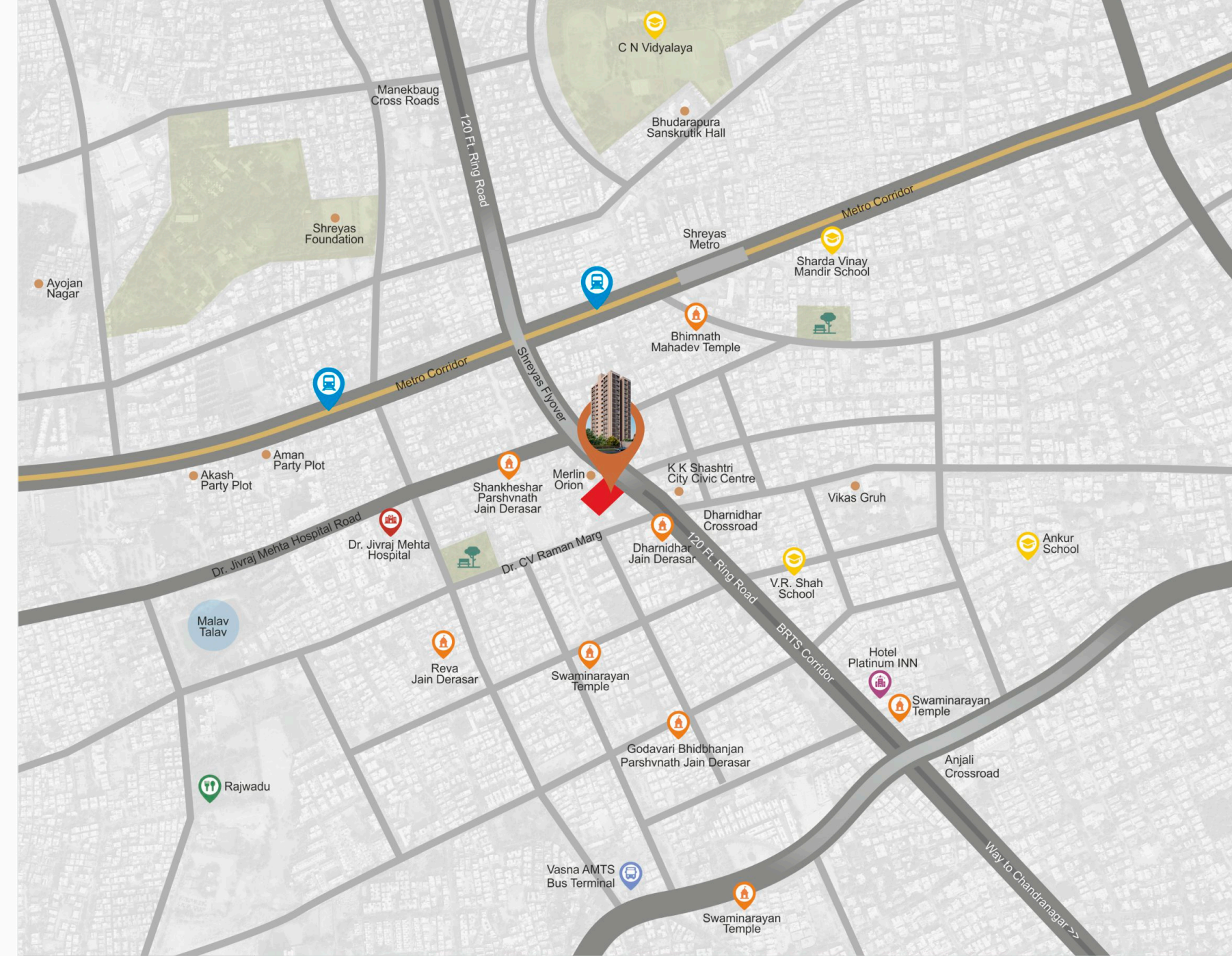


**Electrification:**  
Concealed ISI wiring with exhaust fan and geyser points in all bathrooms. Points for RO, fridge, washing machine, LCD and AC as well as adequate points in all rooms along with modular switches. ELCB / MCB in each apartment.



**Lift:**  
Good quality passenger lifts.

**RULES & REGULATIONS:** • All rights reserved to organizer for any changes in plan & specification. • Irregular payment shall cause cancellation of booking. • Possession of the Apartment shall be delivered only after full payment. • Change in external elevation shall not be permitted. Internal changes shall be done only with prior permission & shall be charged extra in advance. • Details & dimensions in model & brochure are indicative and for the tentative representation only which should not be treated as legal document and/or consumer act. • Variation in shades & sizes likely in Vitrified & Glazed tiles due to constraints of availability & manufacturing. • Any additional charges or duties levied by the Govt./Local authorities during or after the completion of the scheme will be borne by the purchaser. • These images and the artist's impression in the brochure are for presentation purpose only.



## Near By Connectivity



Metro Station



BRTS / AMTS Station



Derasar & Temple



Hospital



Collage / School



Public Garden



Restaurants & Hotels



Shopping Market

## SILVER COIN

THE HIGH LIFE AWAITS YOU

Site Address: Near Jaydeep Tower, Shreyas Flyover, 120 Feet Ring Rd, Paldi, Ahmedabad, Gujarat 380007

For Booking Contact : +91 98980 88054

Email : silvercoindevelopers2023@gmail.com

Rera Reg No. : PR/GJ/AHMEDABAD/AHMEDABAD CITY/Ahmedabad Municipal Corporation/RAA13429/020524/311229  
www.gujrera.gujarat.gov.in

Architect :  
**HEMANT DESAI**  
ARCHITECT & INTERIOR DESIGNER

Structural Engineer :  
**JAYESH DHARVA**  
STRUCTURAL CONSULTANT

MEPF Consultant :  
**MILIND MEHTA**  
RAVI ENGINEERING CORPORATION



Project by

**SILVER COIN**

DEVELOPERS

---

For Booking Contact: +91 98980 88054