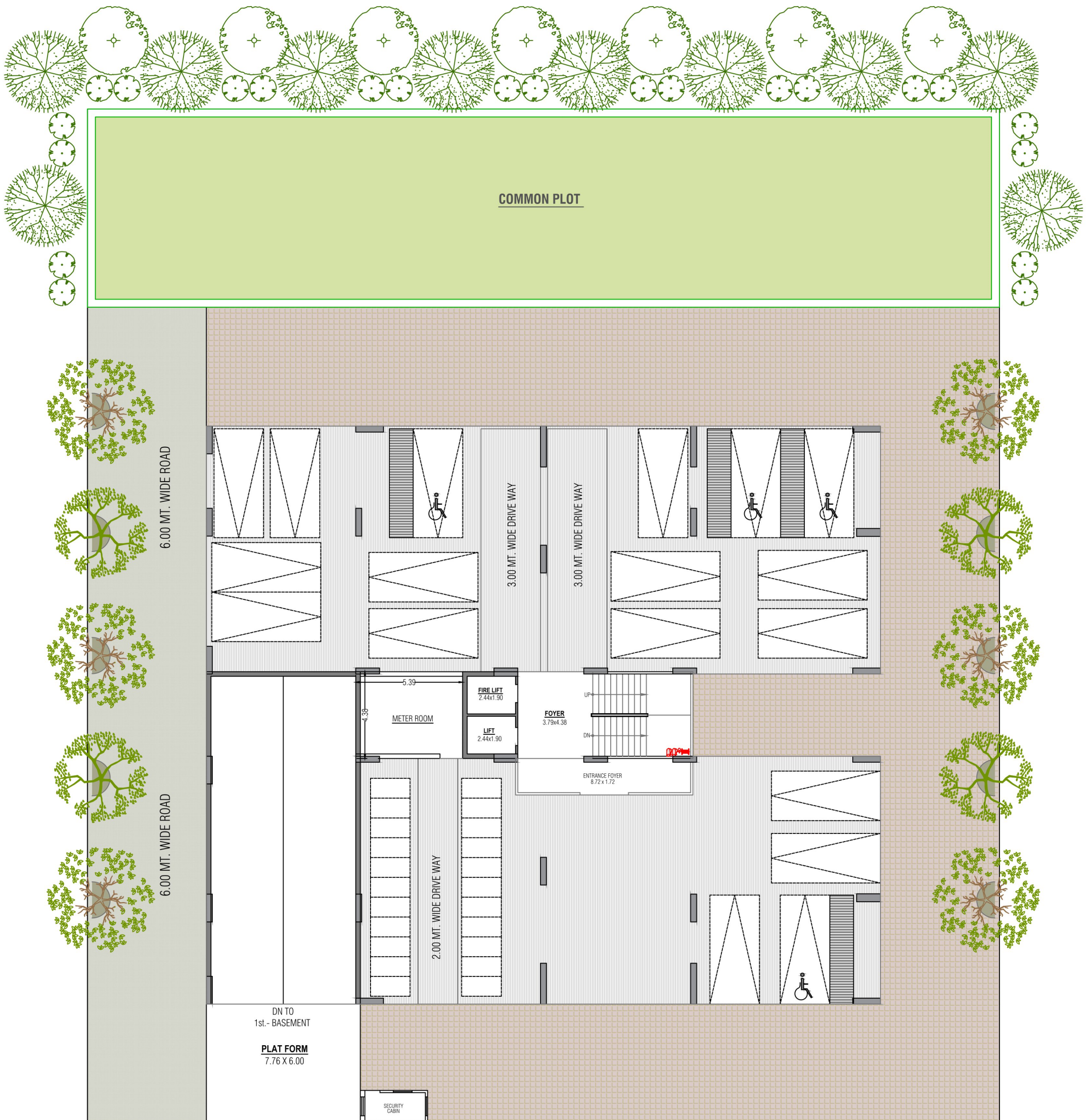


POLARIS 
CALLISTO





GROUND FLOOR

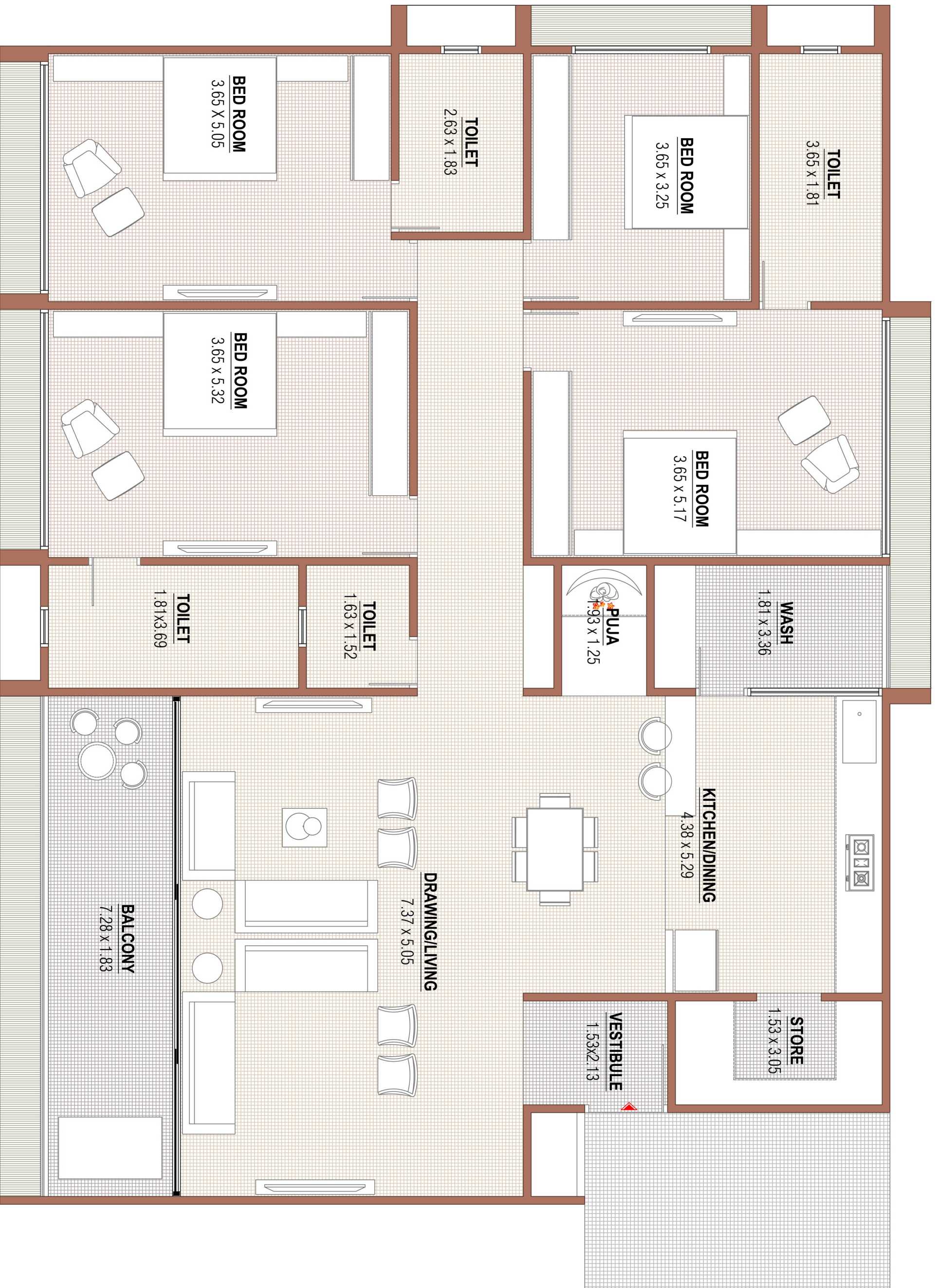


TYPICAL FLOOR



12.00 M WIDE T. P. ROAD

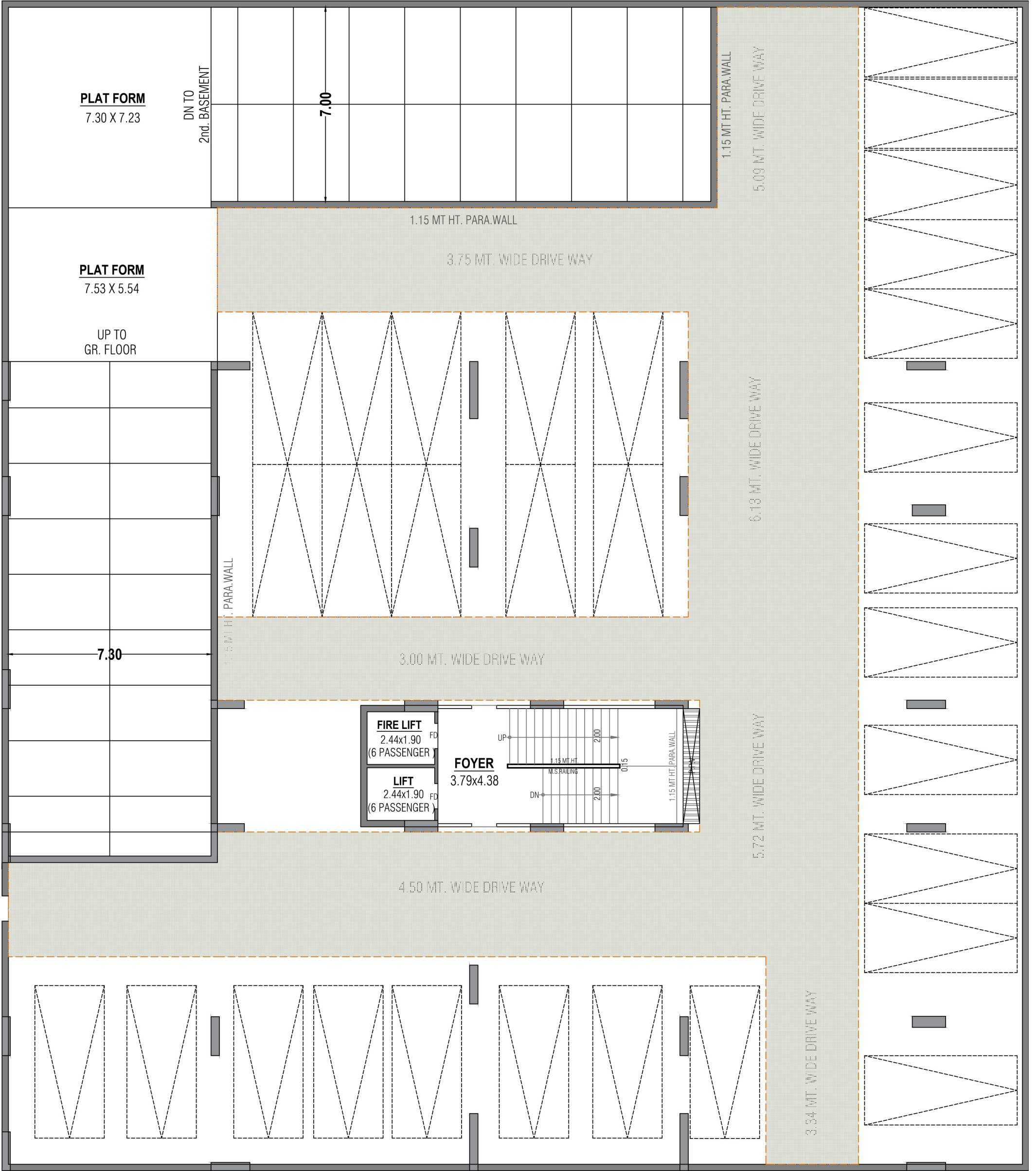
UNIT PLAN - A



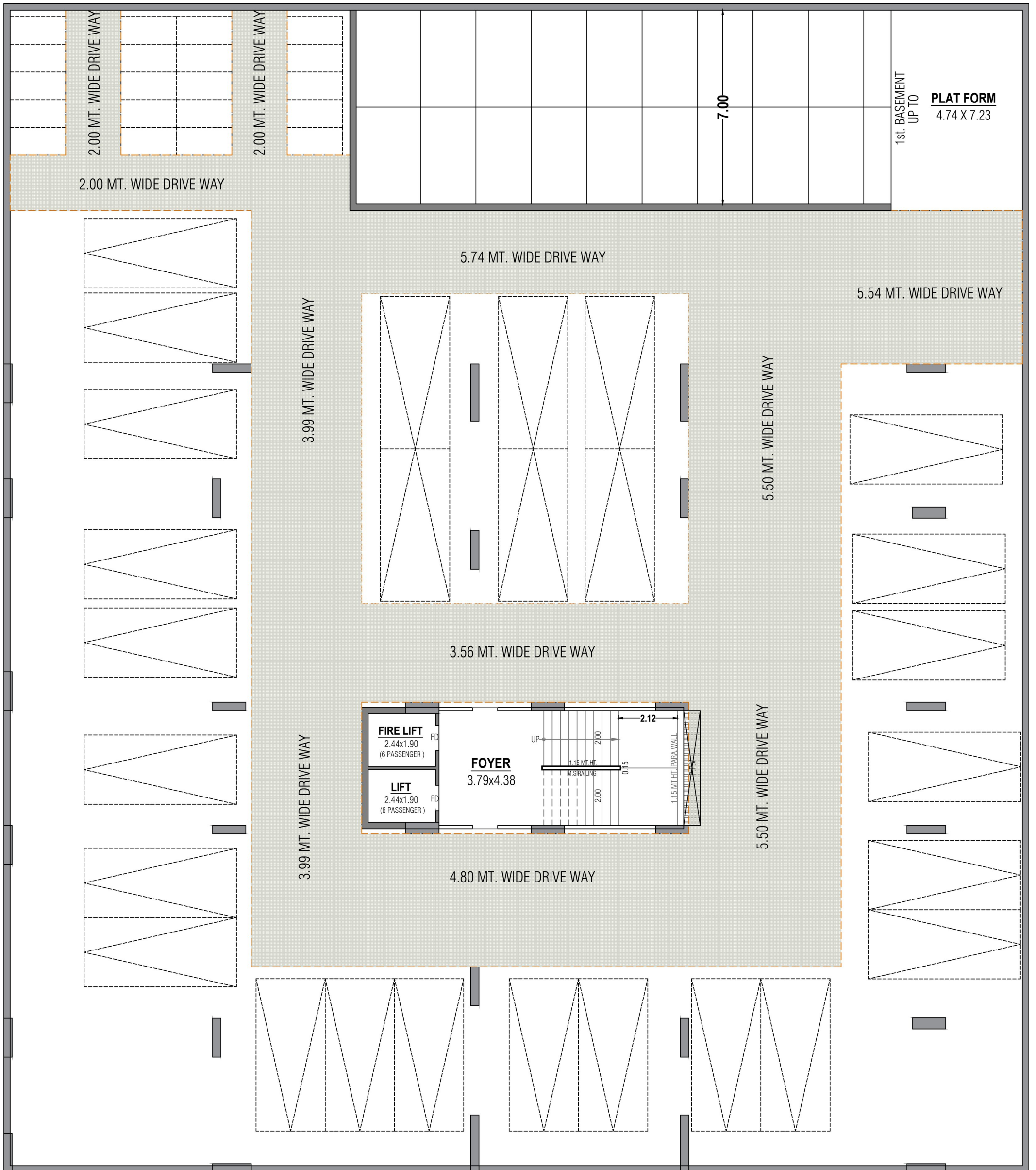
UNIT PLAN - B



BASEMENT - 1



BASEMENT - 2



SPECIFICATION

WALL FINISH

- INTERNAL: SMOOTH FINISH MALA PLASTER WITH PUTTY.
- EXTERNAL: DOUBLE COAT SAND FACED PLASTER OR TEXTURE FINISH.

FLOORING

- VITRIFIED TILES FLOORING IN ALL ROOMS.

KITCHEN

- STANDING POLISHED NATURAL GRANITE KITCHEN PLATFORM WITH SINK & GLAZED TILES DADO ABOVE THE PLATFORM UP TO LINTEL LEVEL.

DOORS

- DECORATIVE MAIN DOOR HAVING LOCK OF REPUTED COMPANY.
- INTERNAL LAMINATED FLUSH DOORS

WINDOWS

- ALUMINIUM SECTION SLIDING WINDOWS WITH GLASS & STONE JAMS.

TOILET

- CERAMIC TILES FLOORING IN ALL TOILETS, GLAZED TILES DADO.

PLUMBING

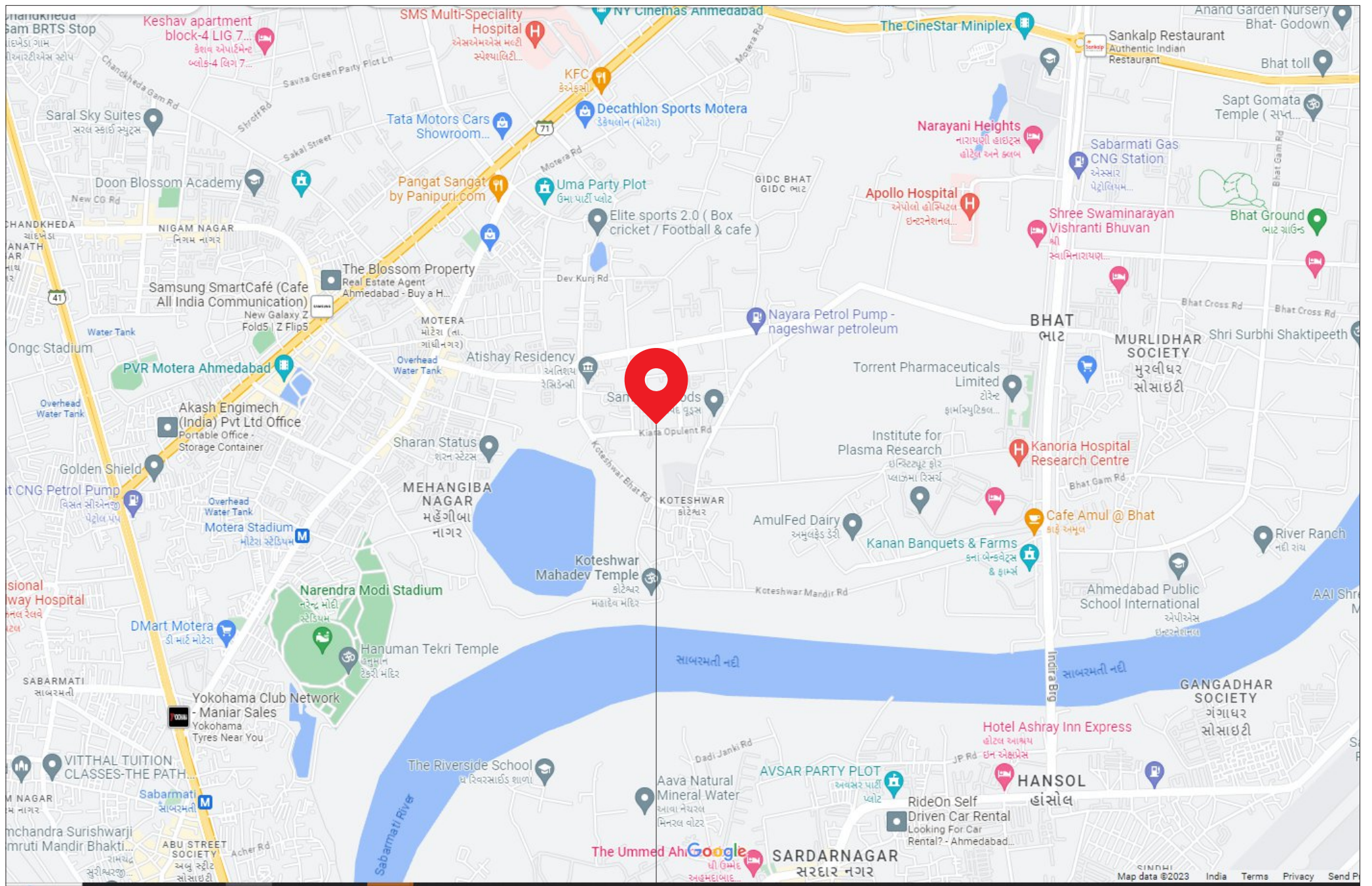
- CONCEALED PLUMBING OF GOOD QUALITY UPVC & CPVC PIPES, C.P. FITTINGS & SANITARY WARE OF REPUTED BRAND.

ELECTRIFICATION

- THREE PHASE METER + MCB & ELCB TRIPPER WITH CONCEALED WIRING AND ADEQUATE POINTS WITH QUALITY FITTINGS.

PAINT

- EXTERIOR ACRYLIC PAINT.
- INTERNAL WALLS PUTTY FINISH.



POLARIS CALLISTO

📍 BESIDE SANGATH NANO, KOTESHWAR - BHAT ROAD,
KOTESHWAR AHMEDABAD - 380 005

CALL : 9978 60 5574/75/76
E MAIL : info@polarisgroup.in

PROJECT BY

POLARIS
CORPORATION

ARCHITECT

SHAPERS360

STRUCTURE
CONSULTANCY

SAKSHAM
CONSULTANTS

RERA REGISTER NO.

RERA WEBSITE : WWW.GUJRERA.GUJARAT.GOV.IN