

BY KAAVYARATNA

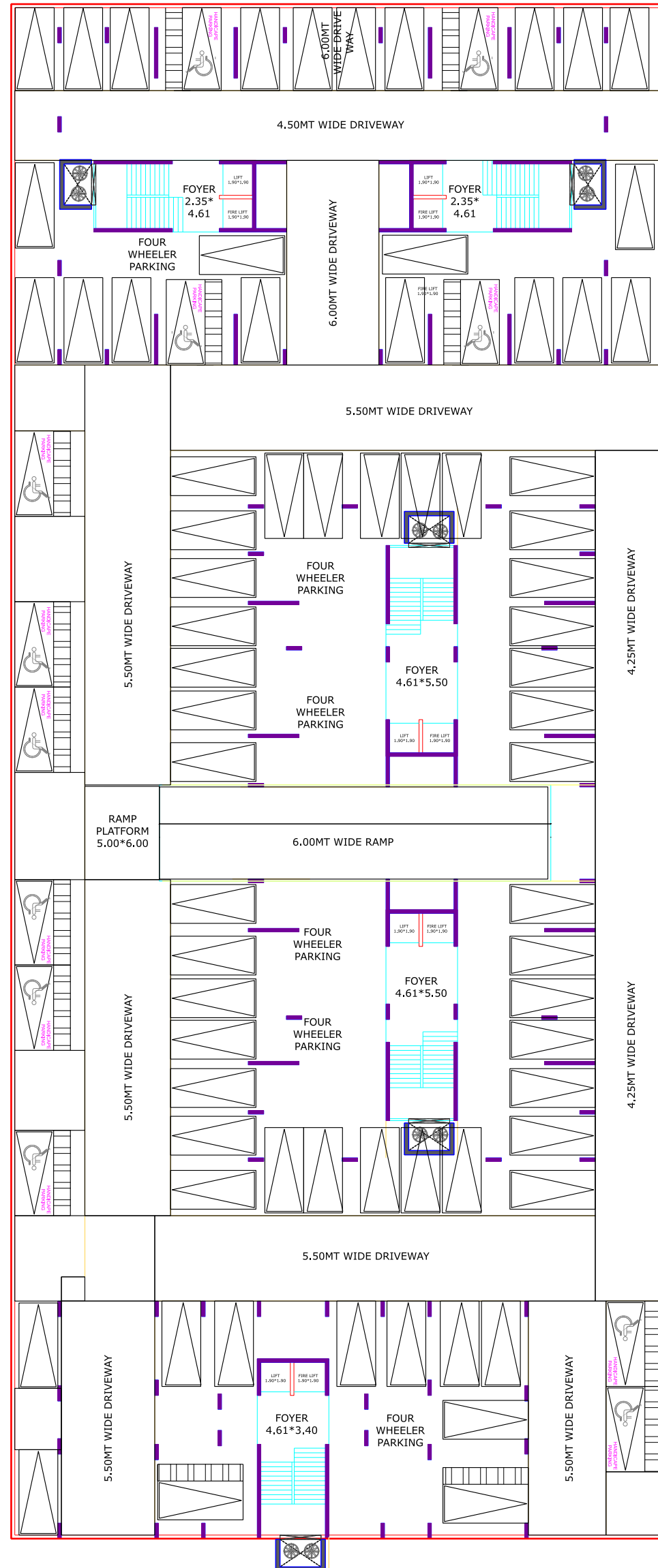
# प्रवेश

2 - 3 BHK IDEAL LIVING

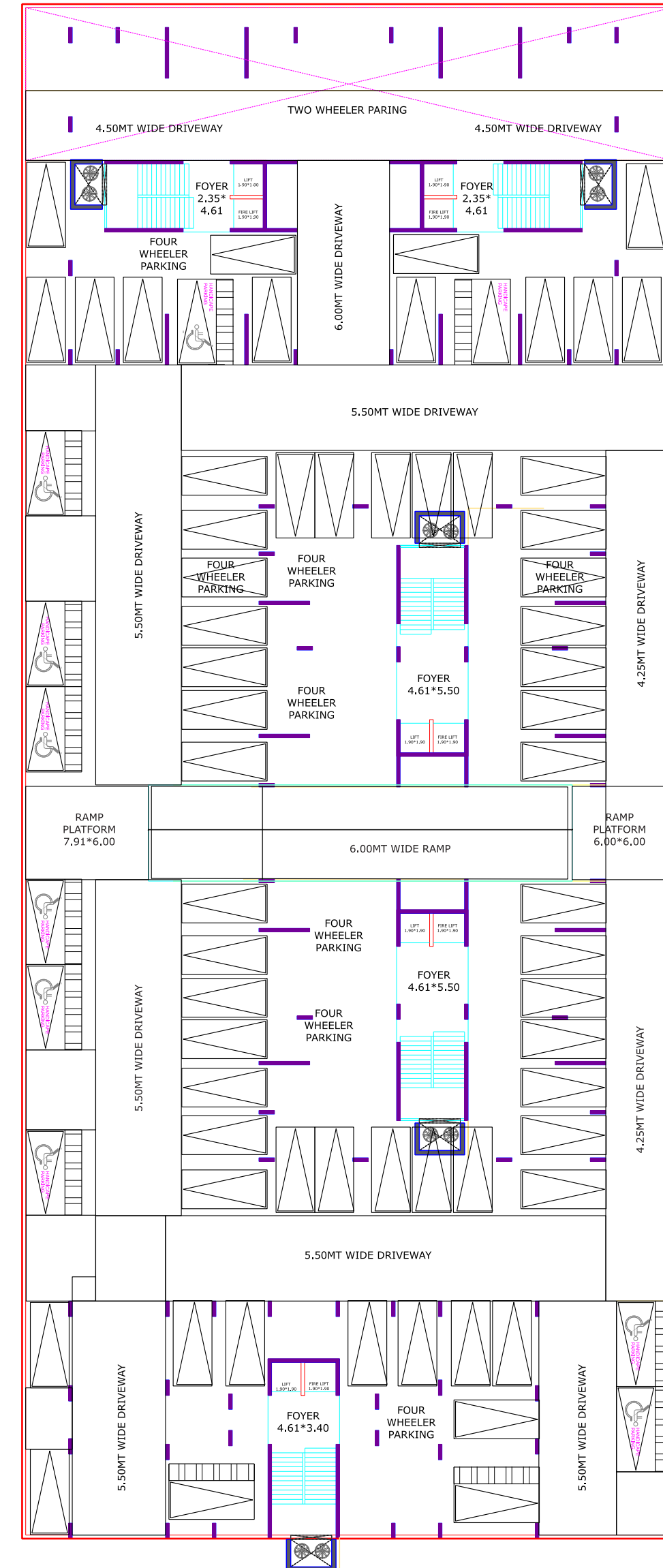




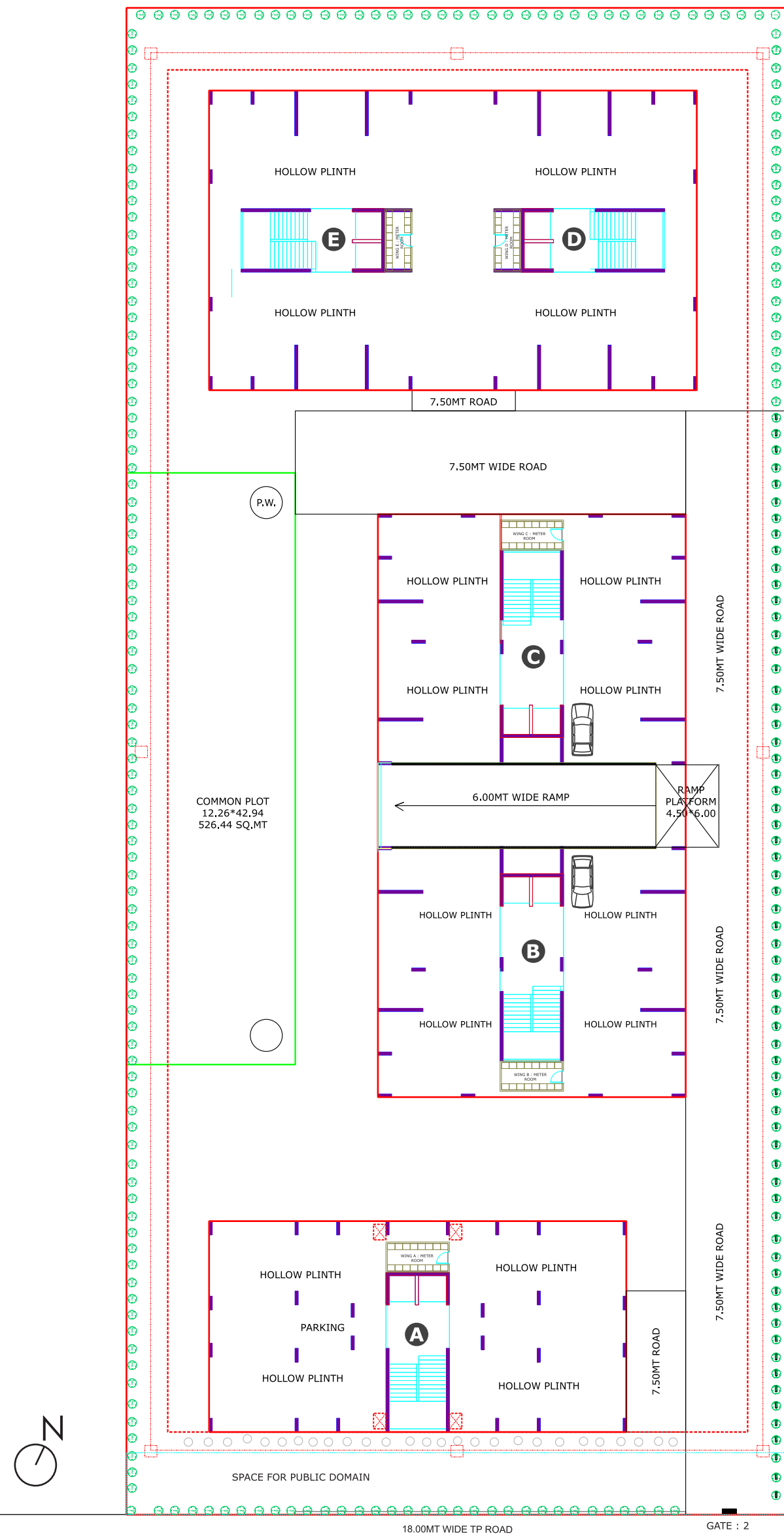
# BASEMENT 02



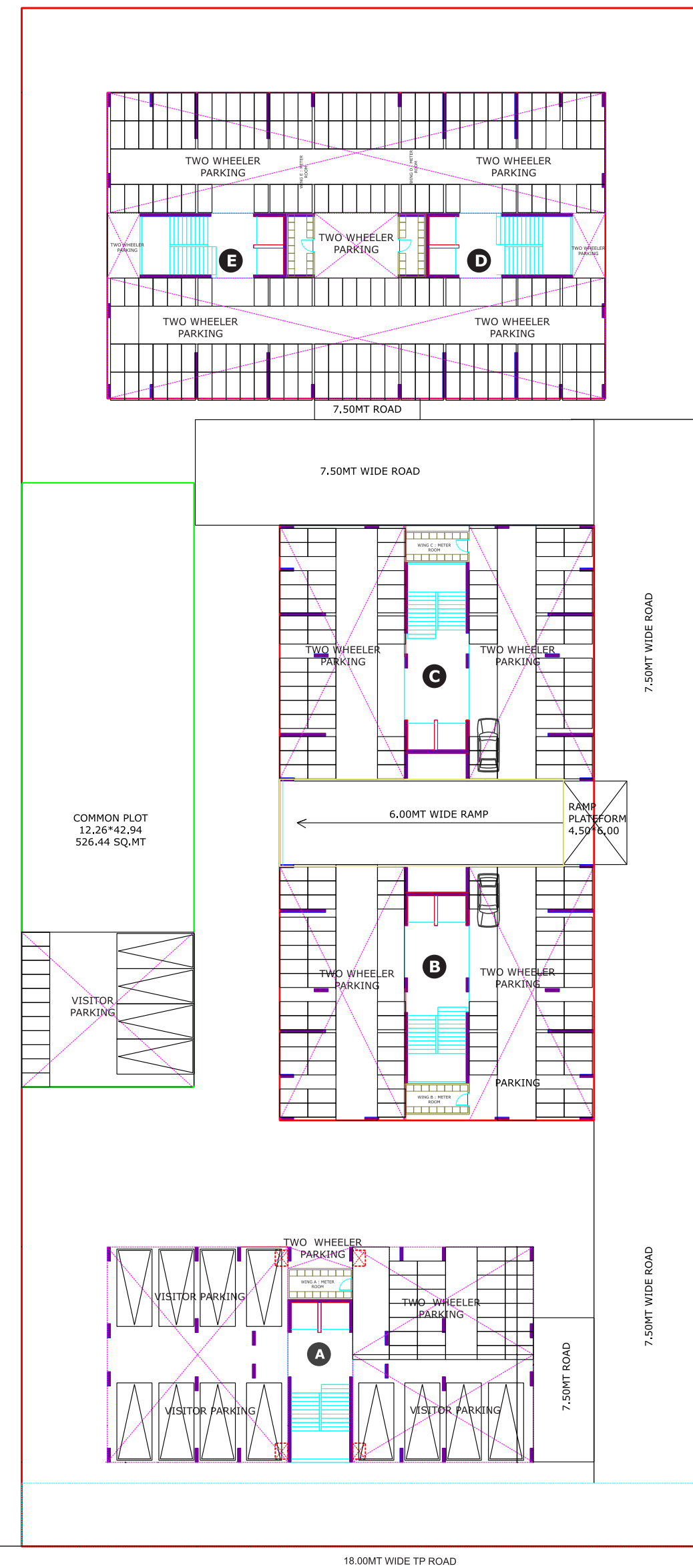
# BASEMENT 01



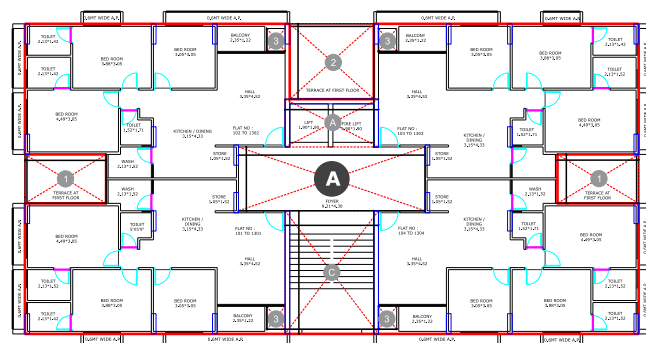
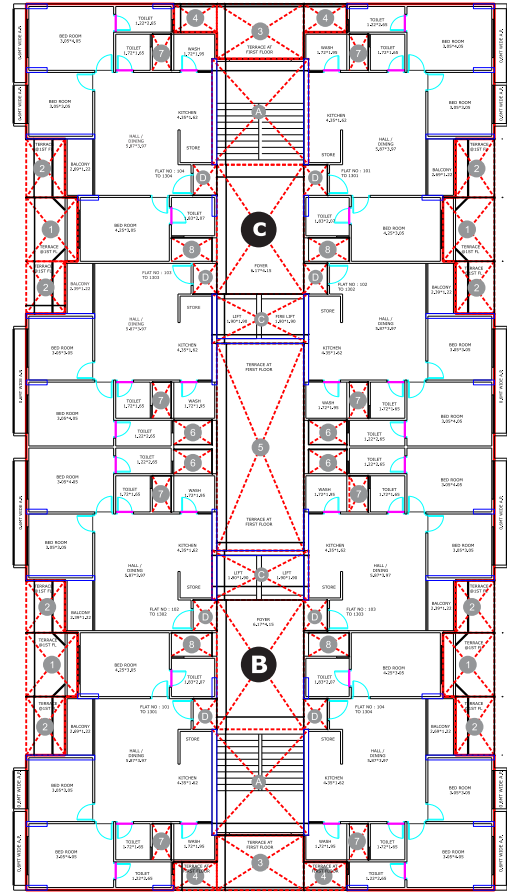
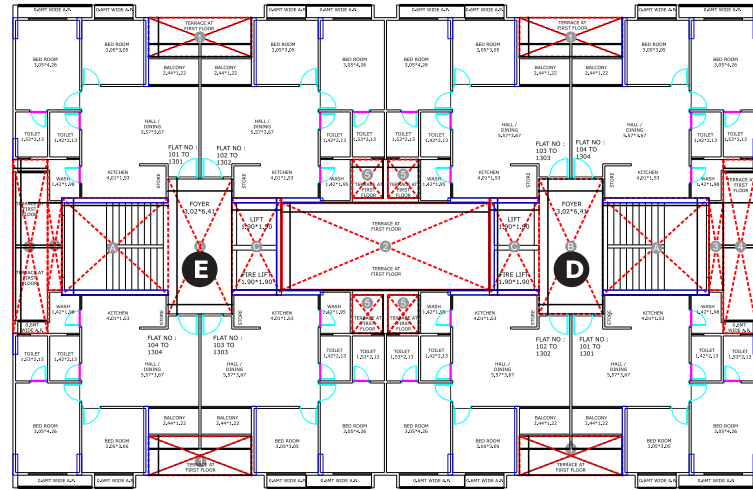
# GROUND FLOOR PLAN



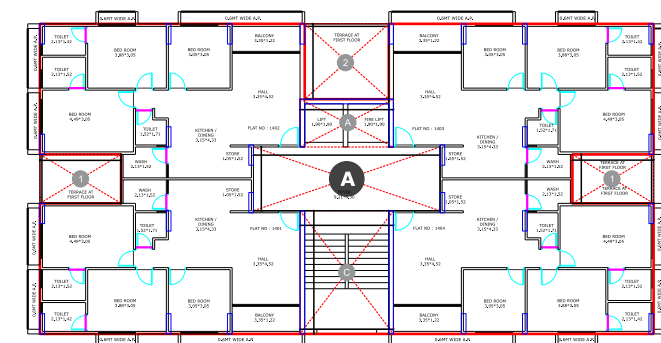
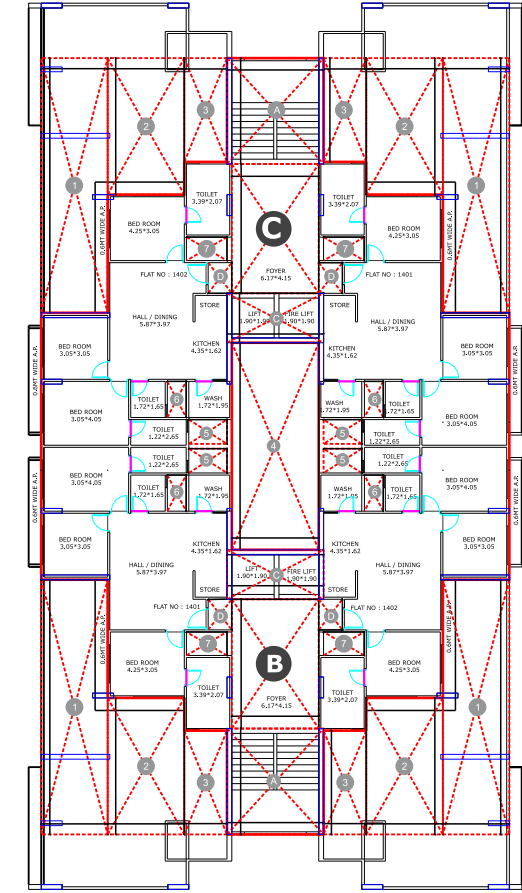
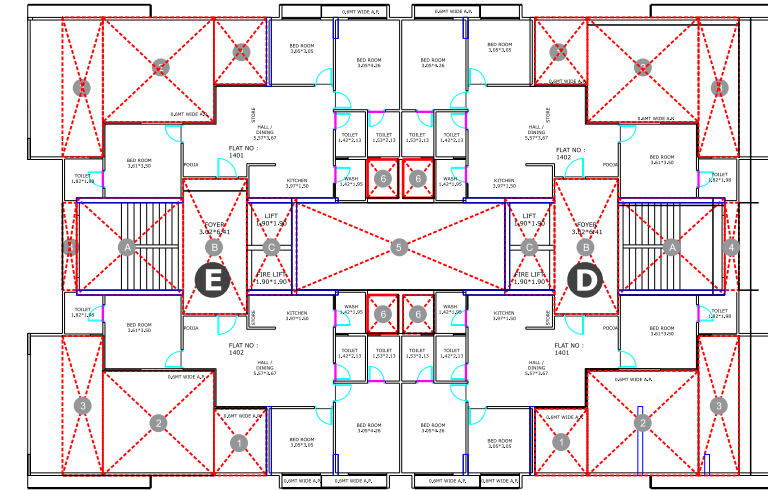
# PARKING LAYOUT PLAN



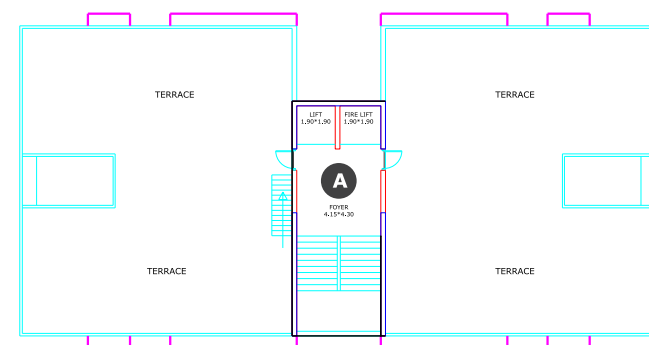
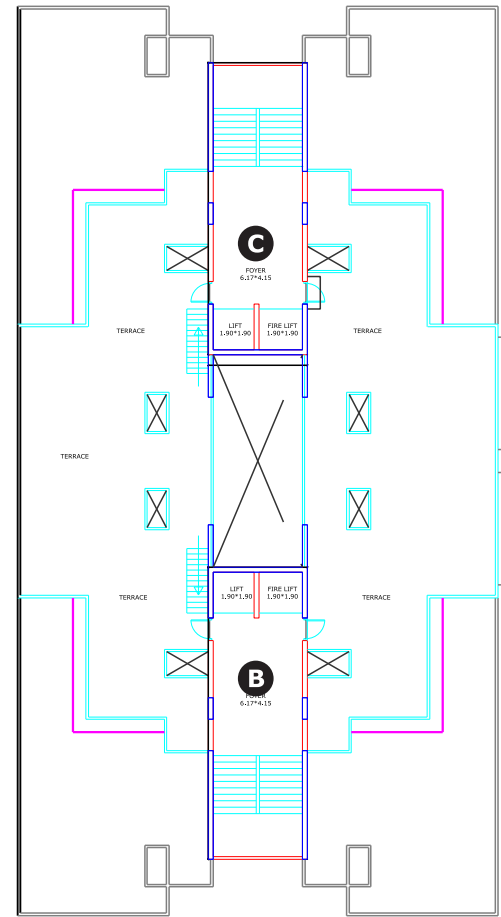
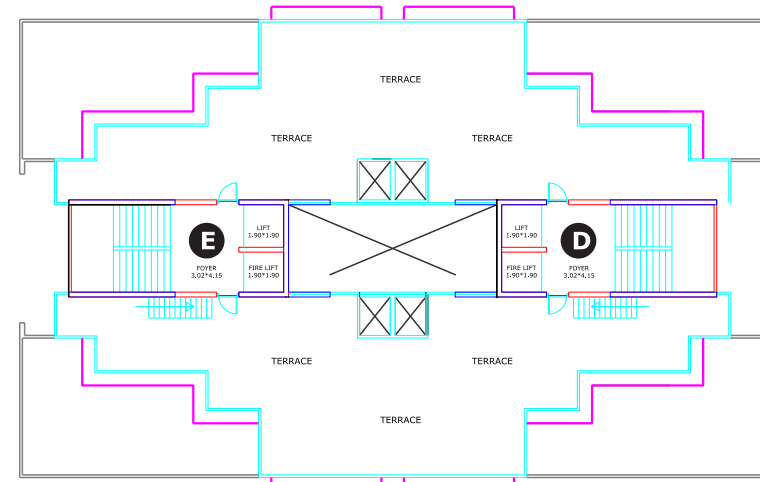
# TYPICAL FLOOR PLAN (1<sup>ST</sup> TO 13<sup>TH</sup>)



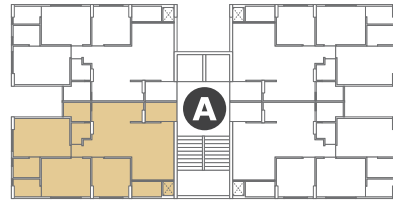
# 14<sup>TH</sup> FLOOR PLAN



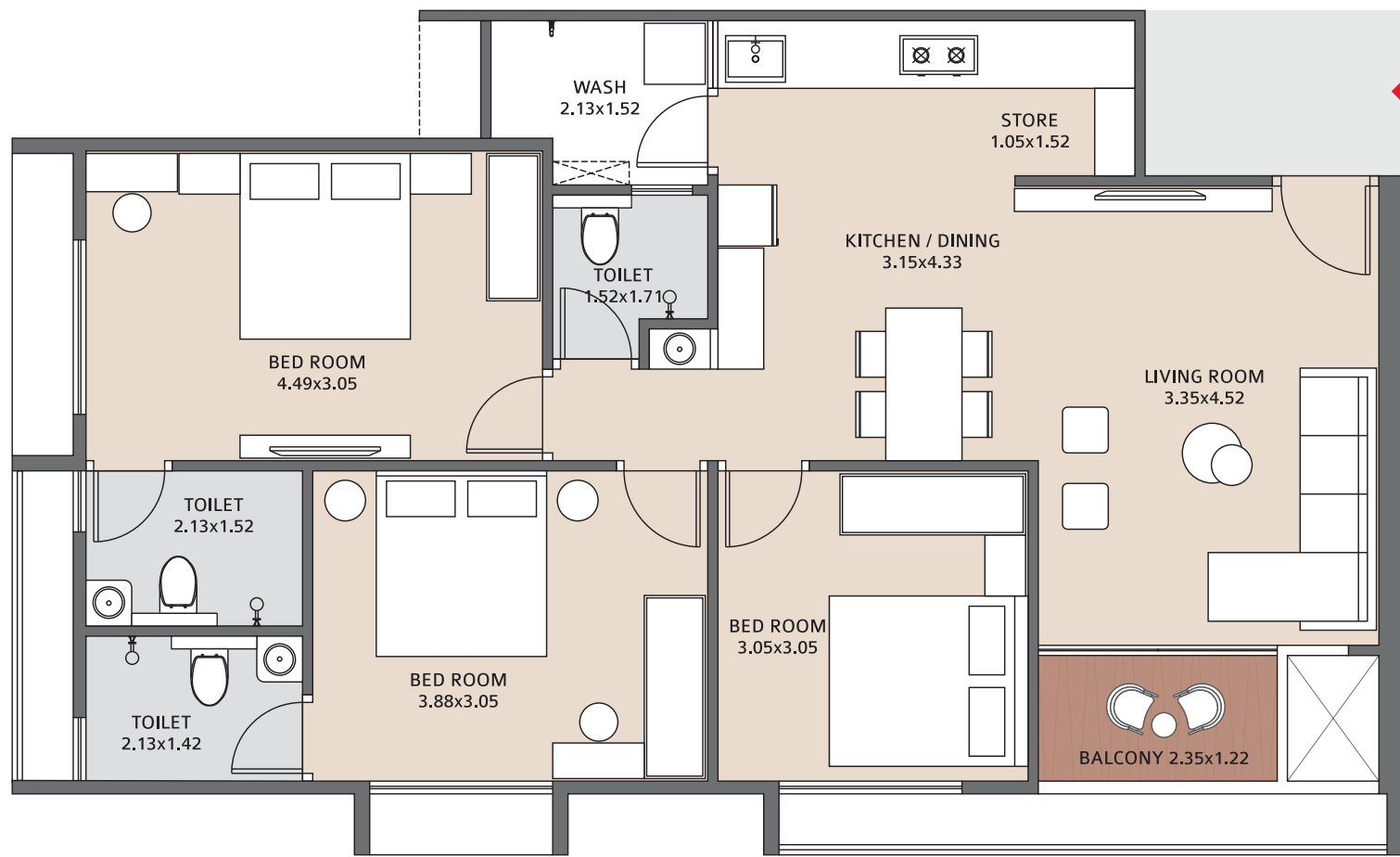
# TERRACE FLOOR PLAN



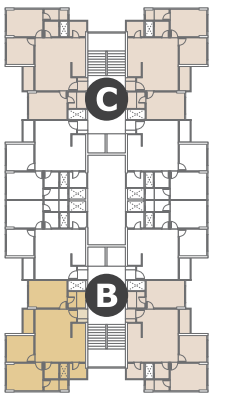
**3 BHK**  
TYPICAL UNIT PLAN  
TYPE - 1



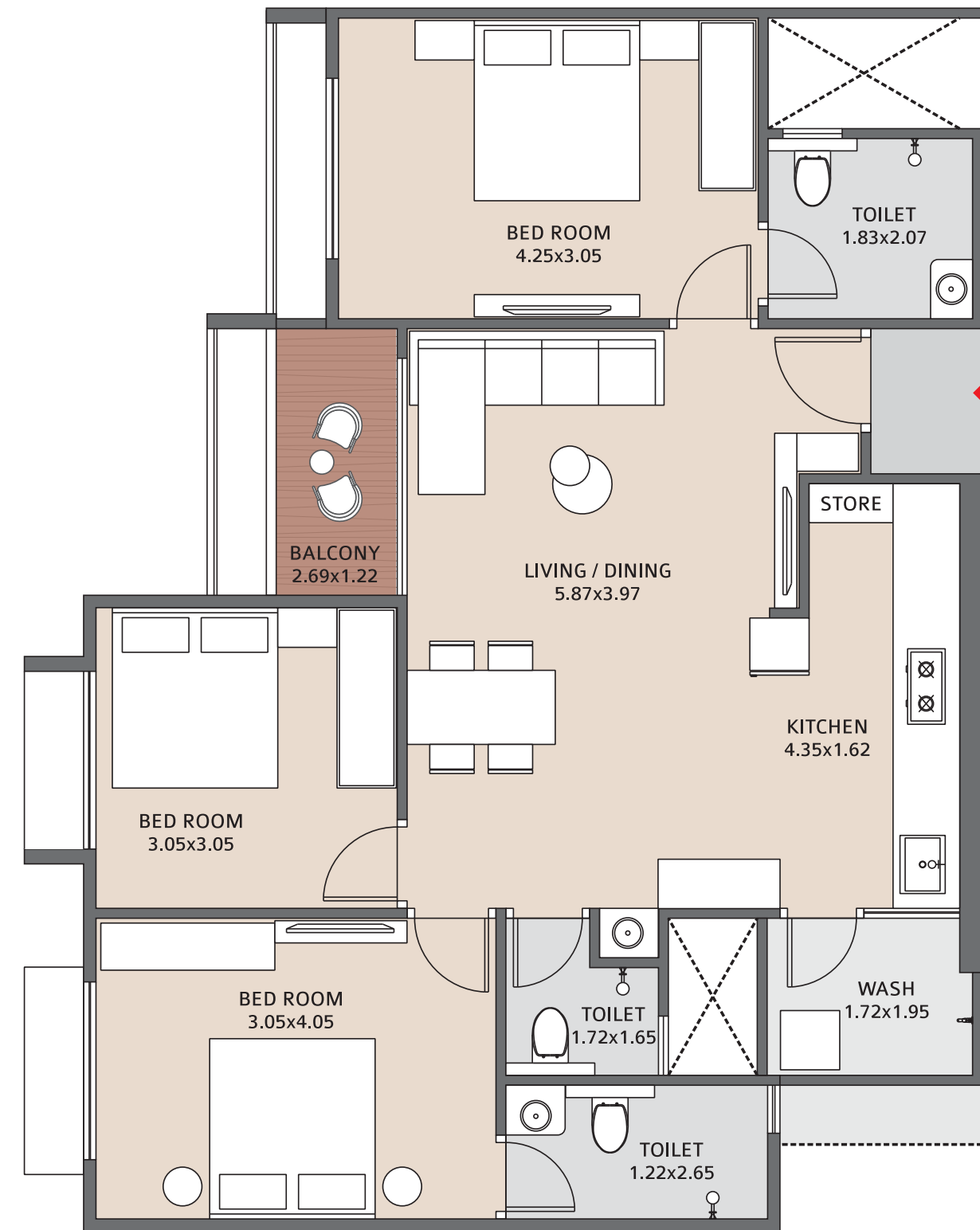
Block A



**3 BHK**  
TYPICAL UNIT PLAN  
TYPE - 2

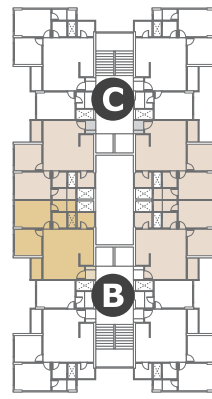


Block B&C

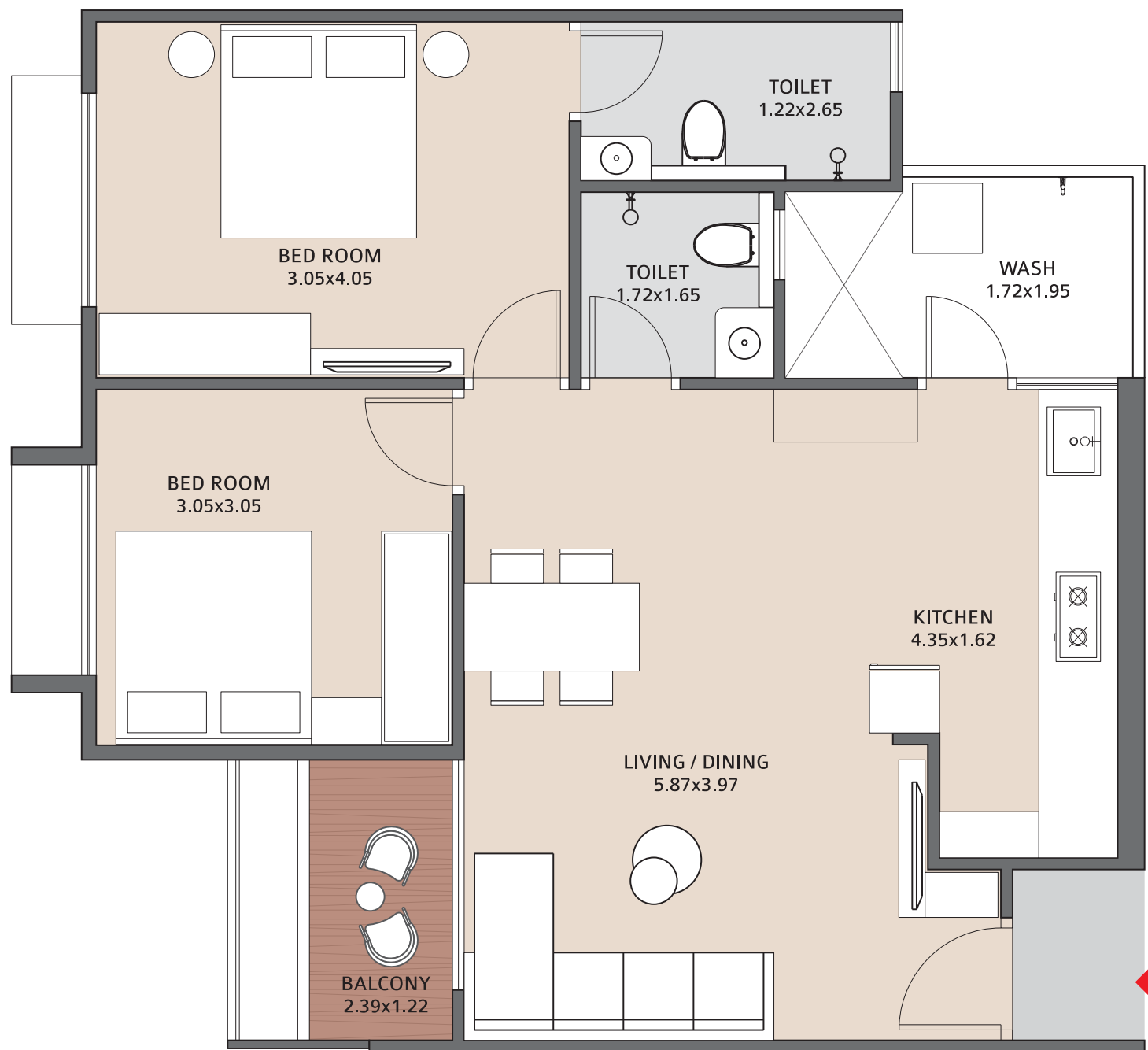




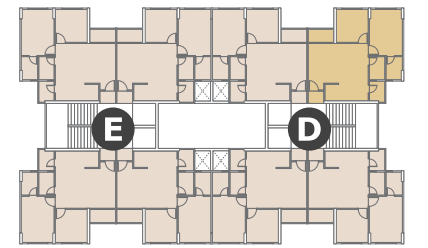
**2 BHK**  
TYPICAL UNIT PLAN  
TYPE - 1



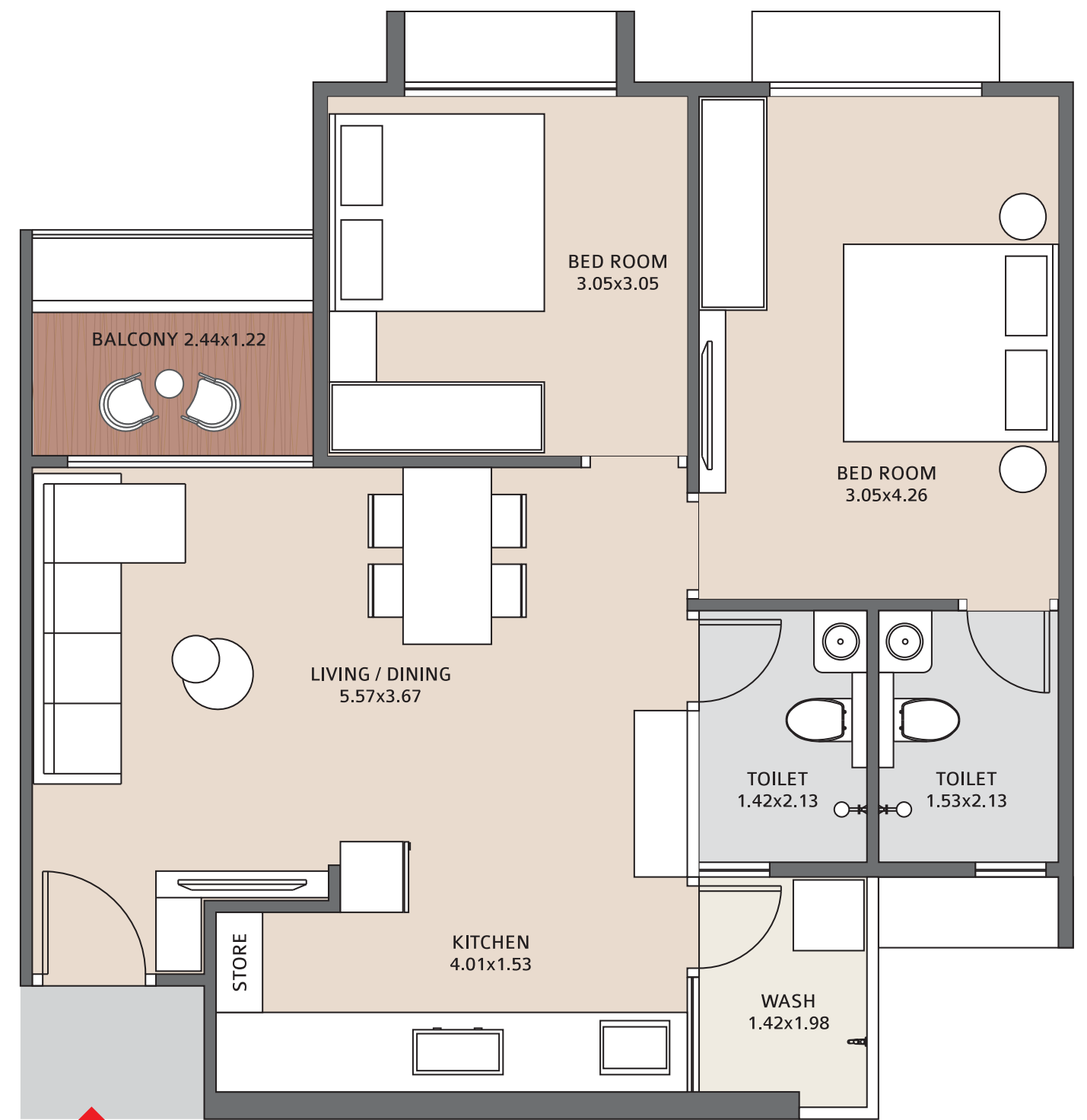
Block B&C



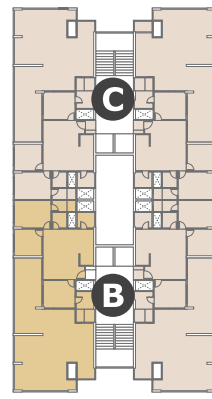
**2 BHK**  
TYPICAL UNIT PLAN  
TYPE - 2



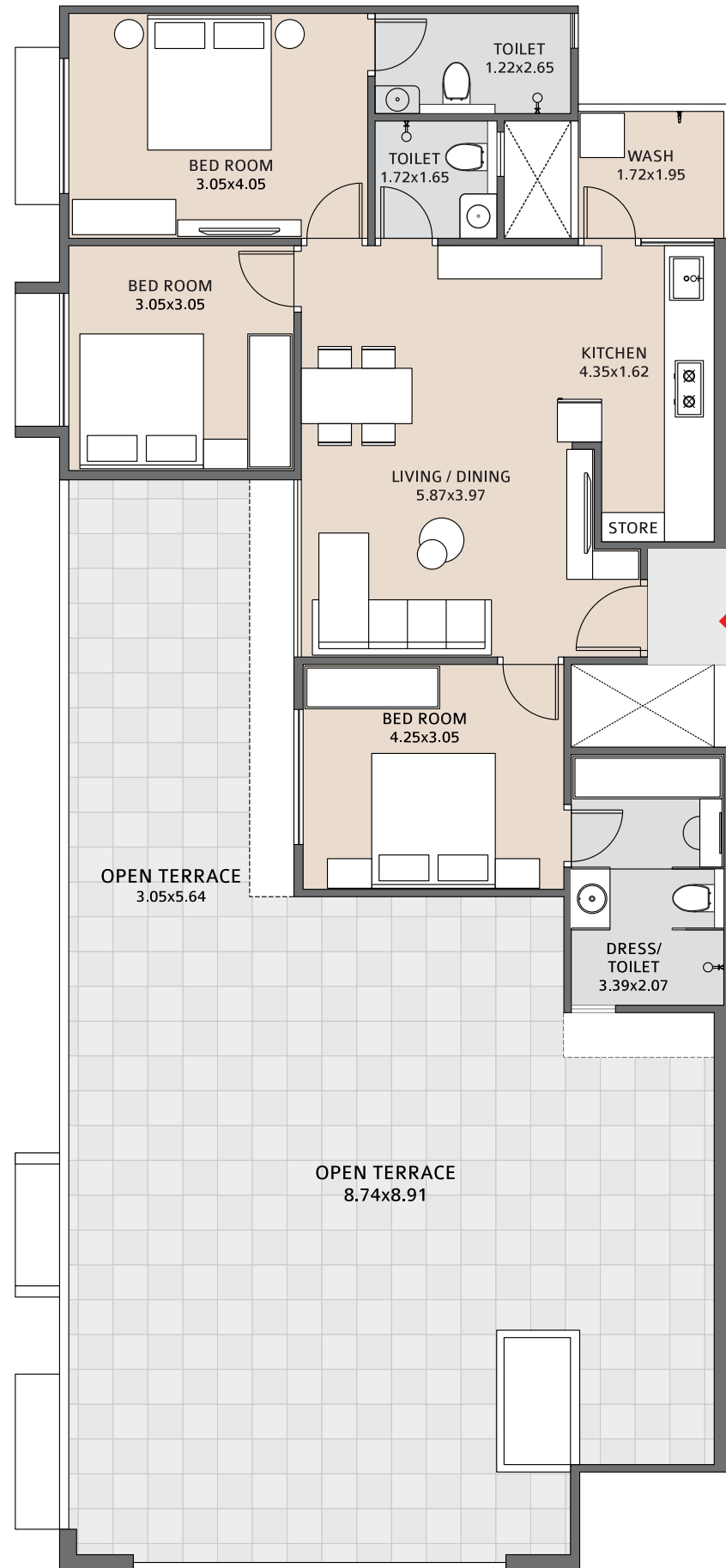
Block D & E



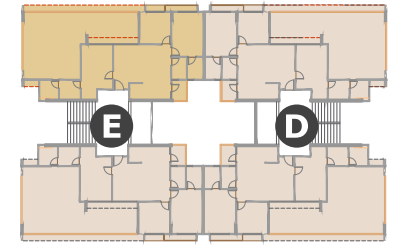
**3 BHK Penthouse**  
TYPICAL UNIT PLAN  
TYPE - 1



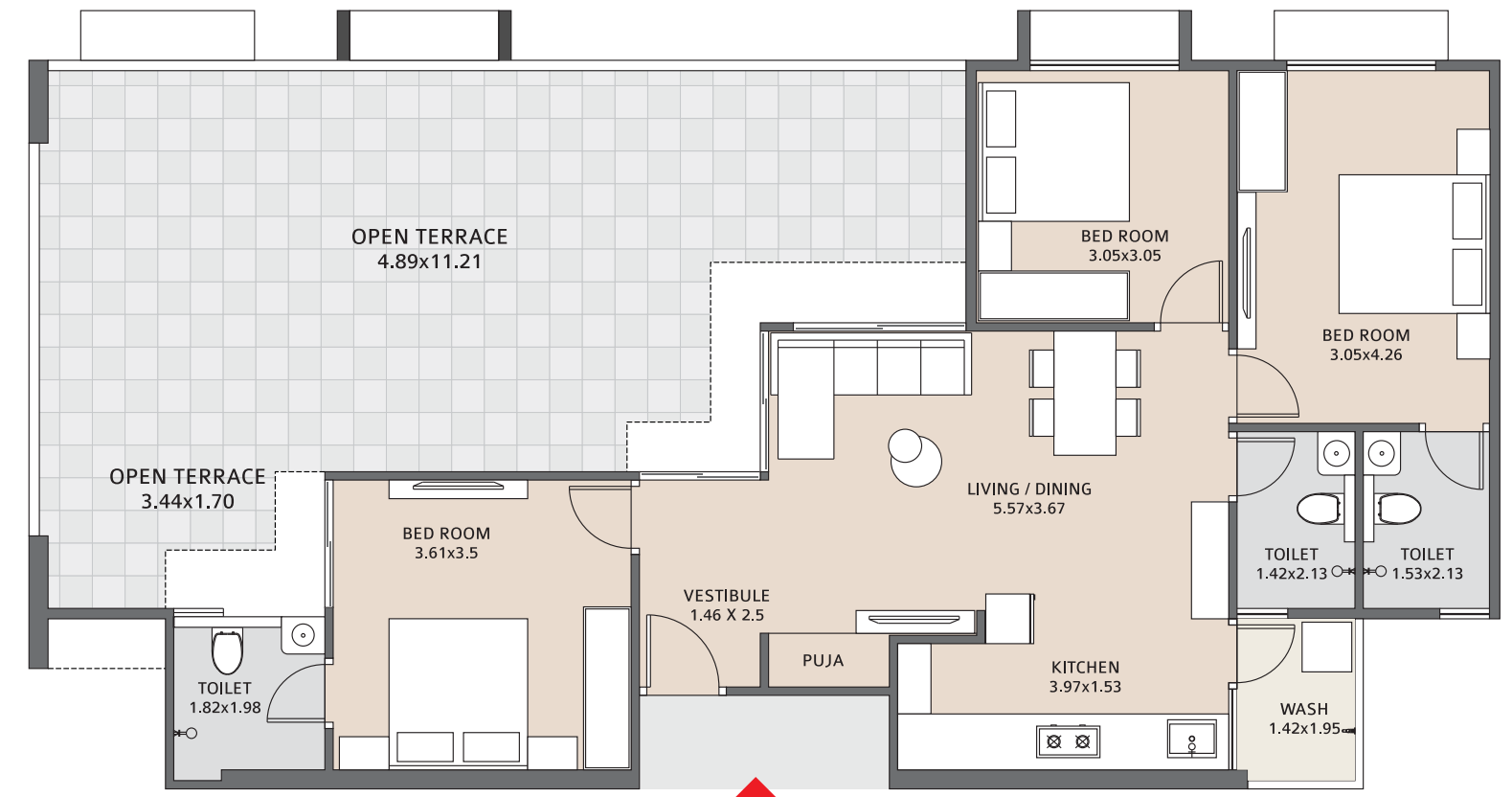
Block B & C



**3 BHK Penthouse**  
TYPICAL UNIT PLAN  
TYPE - 2



Block D&E





## SPECIFICATIONS

### STRUCTURE

**RCC** : Earthquake resistant frame structure

**Masonry** : AAC blocks/ Red bricks/ Flyash bricks

**Plaster** : Internal - single coat mala plaster  
External - Mala/ Tipni plaster

### FLOORING

**Living /Kitchen** : Vitrified tiles (600mm × 600mm) of Kajaria / RAK / Simpolo / Zealtop or equivalent

**Bedrooms** : Vitrified Tiles (600mm × 600mm) of Kajaria / RAK / Simpolo / Zealtop or equivalent

**Balcony** : Rustic Tiles of standard quality

**Bathrooms** : Anti-skid ceramic tiles of standard quality

### DOORS

**Main door** : Laminated pine wood flush door

**Other** : Pine wood flush doors with oil paint

### WINDOWS

Powder coated aluminum sliding windows of National / Sayona / Zindal or equivalent (in Domal sections)

**Glass** : 4/5 mm thk. plain glass of Saint Gobain / MODI / Indo Aasahi

### TOILETS

**Glazed / Ceramic tiles** : Upto beam bottom of standard quality

**Sanitary wares** : Cera, Jaguar, Hindware, Simpolo or equivalent.

**CP fittings** : Jaguar/ Cera/ Hindware / Plumber or equivalent.

**Plumbing/ Piping** : Ashirvad / Astral or equivalent

### ELECTRIFICATION

**Concealed wiring** : Polycab / Havells / Finolex / RR Kabel or equivalent

**Modular switches** : Schneider / Anchor or equivalent

**MCB distribution panel** : Schneider / Havells / or equivalent

**Electrical connection** : 3 KW (Single Phase)

### COLOUR

**Internal** : Putty finish (Birla White or equivalent)

**External** : 100% Acrylic paint (Berger / ICI / Asian / Nerolac or equivalent)


### WATERPROOFING

Brickbat coba waterproofing in all sunk slab

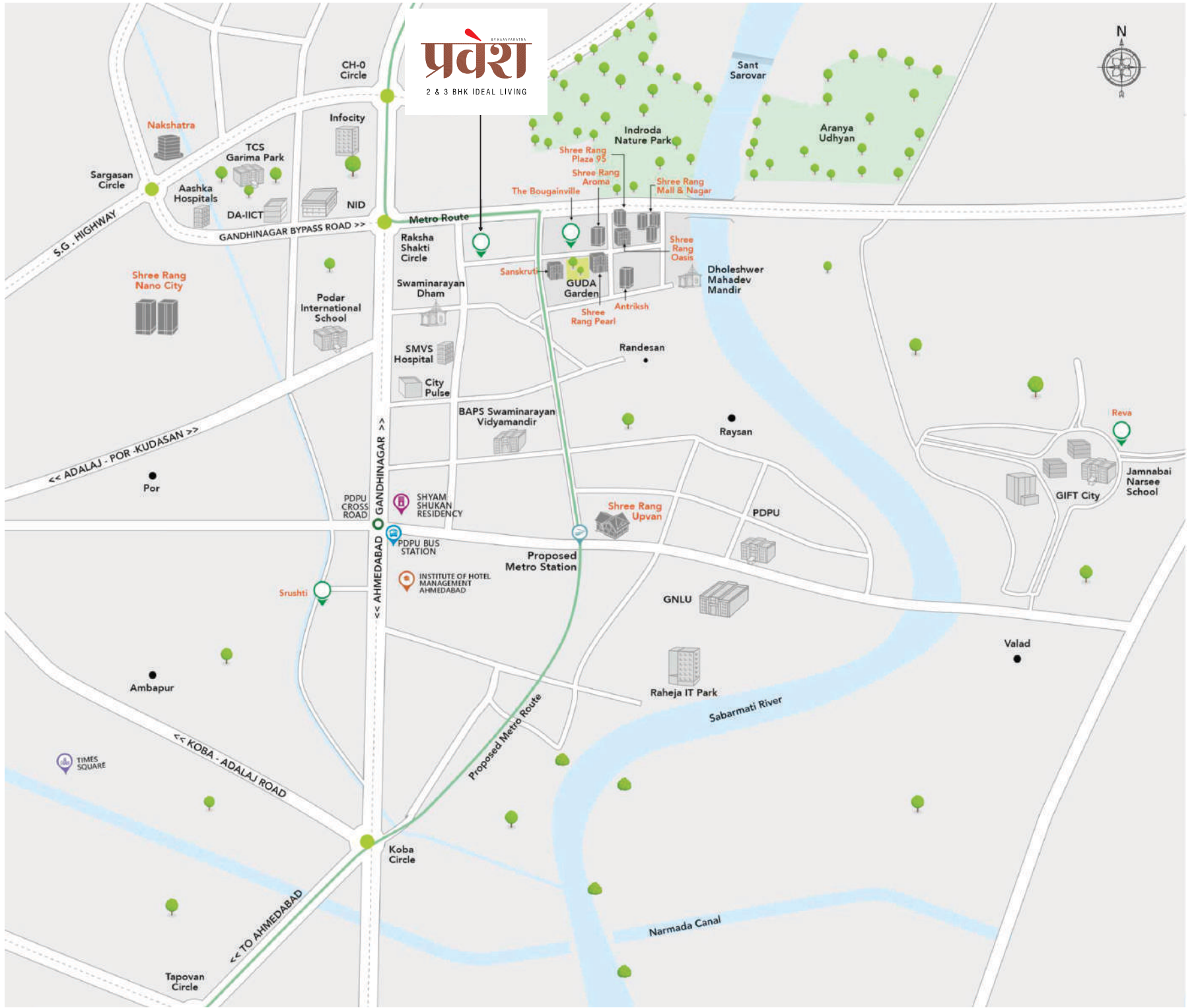
China mosaic / Ceramic tiles waterproofing on terrace

ARCHITECT  
**HKA**  
HK ARCHITECTS

LANDSCAPING  
  
ZENITH DESIGNER STUDIO

STRUCTURAL ENGINEER  
 **SHREEJI**  
STRUCTURALS

MEP  
  
Atomep Enteam  
CONNECT • COOPERATE • CONSERVE  
Atomep Enteam



**Developer : KAAVYARATNA PRAVESH LLP**

Site Address : **PRAVESH BY KAAVYARATNA**  
 Nr. Sanskruti, GIFT CITY Road  
 Randesan, Gandhinagar, Gujarat 382421

Booking Contact : **90992 95244, 90999 19068**  
 Email: [Info@kaavyaratna.com](mailto:Info@kaavyaratna.com) Website: [www.kaavyaratna.com](http://www.kaavyaratna.com)

**Rera Registration No. :**

[www.gujrera.gujarat.gov.in](http://www.gujrera.gujarat.gov.in)