



FUTURE TRENDS

The Valley
Sy.No. 763p & 764p, Airport Viewpoint Road
Exit No 15, Pedda Golconda, Mankhal Village
Maheshwaram Mandal RR (Dist)
Telangana 501 359

Phone: +91 99923 69369
Email: sales@futuretrends.co.in
Website: futuretrends.co.in



FUTURE TRENDS

THE VALLEY

It all started with a daring dream.



What would it take to elevate villa living to new heights?

Perhaps going a few feet below ground.





The vision behind The Valley

The Valley was born out of an audacious dream, brought to life by our founders, Ujwal Kotagiri and MSR Sandeep. A world created from nothingness, a valley sculpted out of the earth. Adorned with gurgling streams, and extending several feet below ground. Armed with their dream, Ujwal and Sandeep then joined forces with two globally-renowned architects, Arun Nalapat and Karl Prinic, to bring The Valley to life.



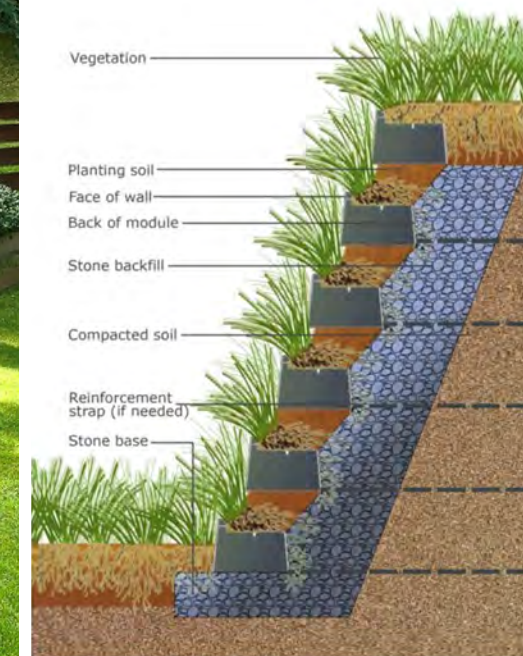
Ujwal Kotagiri
Designated Partner

Since completing his Master's in Engineering Management from UWS, Australia, Ujwal has been an active entrepreneur in the Bay Area startup ecosystem. Now back in India, he successfully commissions renewable power generation assets and invests in large-scale infrastructure. Ujwal's experience with state-of-the-art lifestyle products in the US and Dubai fuels his passion for building world-class urban communities with unmatched design excellence.



MSR Sandeep
Designated Partner

With a Master's in Computer Applications from Madras University and PGDBA from Pondicherry University, Sandeep co-founded Future Trends. Having worked extensively with Fortune 100 corporations, he excels in project management and quality compliance. His long-term vision for Future Trends is to help it become a leader in ultra-luxury communities, known for customer-centricity, value engineering and design innovation.



Arun Nalapat
Principal Architect

Arun Nalapat brings a wealth of experience and an unwavering commitment to design excellence. Educated in India and the US, he honed his craft with renowned firms such as HDR Inc. and BWBR Architects. In 1995, Arun founded Arun Nalapat Architects (ANA), a Bangalore-based practice celebrated for its innovative and sustainable design. ANA's impressive portfolio spans India, the Middle East, and North Africa, earning numerous awards and international recognition.



Karl W. Prinic
Landscape Architect

With over 30 years of international experience, Karl Prinic is a visionary architect who has shaped some of the world's most prestigious resorts, residential and hospitality projects.

From Southern California to Singapore, Karl's creative genius has earned him a stellar reputation. He has collaborated with renowned global brands such as Aman, Mandarin Oriental, Four Seasons, and Ritz Carlton, crafting award-winning properties across 20 countries.



Inspired by New York's Central Park



Masterplan

LEGEND

- | | |
|----------------------|----------------------------|
| 1. Main entrance | 13. Water bodies |
| 2. The Clubhouse | 14. Children's play area |
| 2A. Swimming pool | 15. Bridge over The Valley |
| 3. Party lawn | 16. Viewing pavilion |
| 4. Pet park | 17. Amphitheatre |
| 10. Lawn | 18. Jogging track |
| 11. Services | 19. Valley viewpoint |
| 12. Community spaces | |

FOR FUTURE DEVELOPMENT

- 5. Tennis court
- 6. Pickleball court
- 7. Basketball court
- 8. Volleyball court
- 9. Cricket nets





LEGEND

- | | |
|---------------------------|-------------------------|
| 1. Valley viewpoint | 5. Jogging track |
| 2. Water bodies | 6. Children's play area |
| 3. Community spaces | 7. Viewing pavilion |
| 4. Bridge over The Valley | 8. Amphitheatre |

Valley Living

The life outside

Imagine backyards of wonder and playgrounds of curiosity, spread over 16 acres of land. Endless glades of green, for picnics under the sun. Acres of adventure for the little ones to go bug-chasing and cloud-gazing along murmuring creeks. And not to mention, a sprawling Clubhouse that offers residents endless ways to play, unwind and dine. At The Valley, life flows at its own leisurely pace. In a truly magical place.





Exclusive yet accessible

Featured here, a ramp for the elderly, to access the kids' play area





Dive into the good life

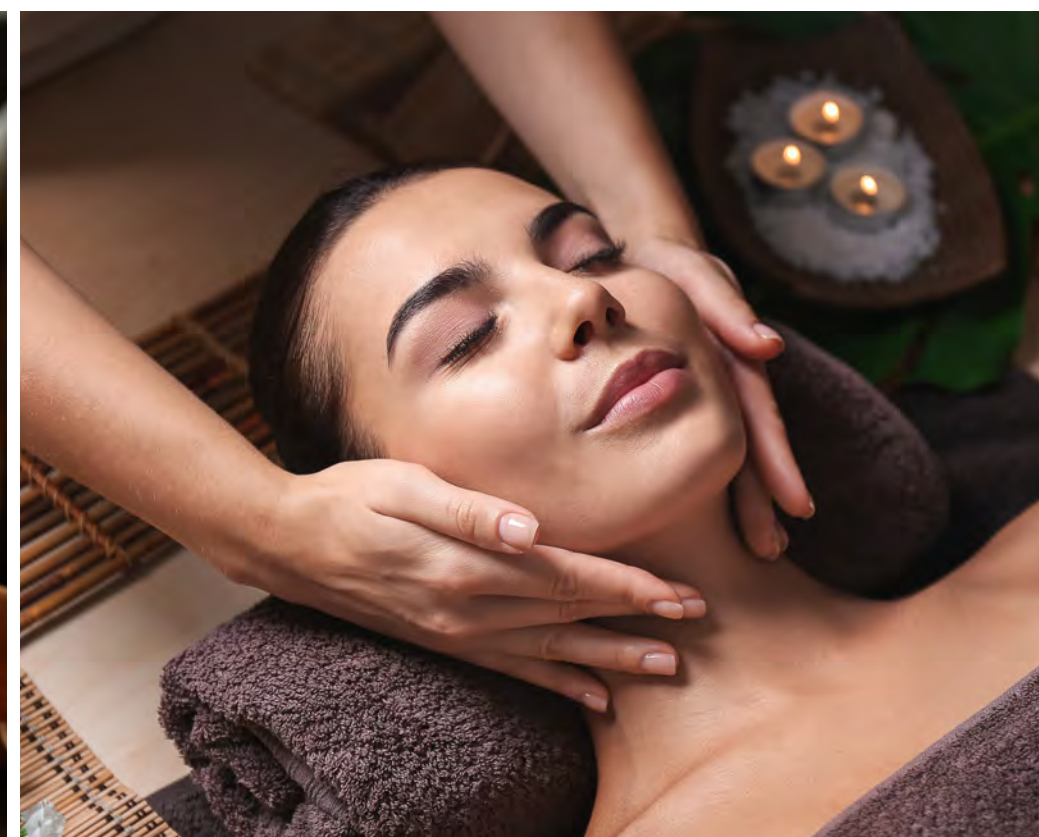
The Clubhouse

The Valley's swanky 30,000 sft Clubhouse offers you endless ways to live it up. Built at the head of the valley, the Clubhouse offers unobstructed views from each of its three floors. Soak up gorgeous views surrounded by water bodies, fountains, parks, play areas and tree-lined courtyards. Sweat it out over squash, badminton or at the sauna and spa. Cool down in our semi-Olympic sized pool. Treat yourself at the poolside restaurants. Burn calories at our world-class gym. Unwind at the meditation centre. Out here, indulgence is a way of life.









Do what you love Love what you do

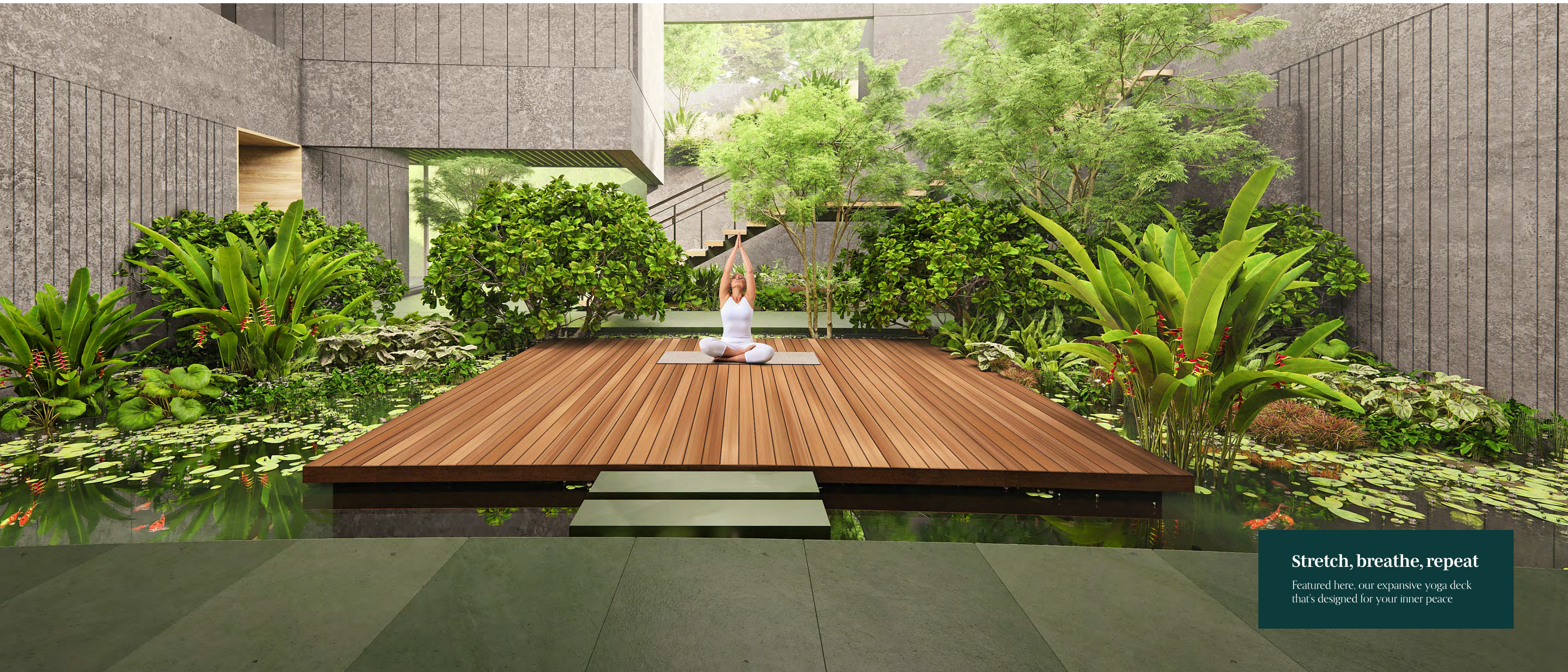
- Restaurants
- Rooftop lounge areas
- Poolside dining
- Banquet hall
- Guest suites
- Business centre
- Meeting rooms
- Spa with steam and sauna
- Gym
- Aerobic studio
- Meditation area
- Badminton court

- Squash court
- Indoor game rooms
- Creche
- Convenience stores
- Pharmacy
- Pools for adults & kids
- Changing rooms
- Outdoor party lawn
- Yoga deck

For future development

- Tennis court
- Basketball court
- Cricket nets
- Pickleball court
- Volleyball court





Stretch, breathe, repeat

Featured here, our expansive yoga deck that's designed for your inner peace



The Cafe



A welcome change

Featured here, the luxurious changing room inside the Clubhouse, offering verdant views



Valley Living

The life inside

The Valley is home to 68 ultra-luxury villas ranging from 6,395 to 10,809 sft in size. Regardless of size, each villa is a cosy cocoon of comfort designed for the future, with provisions for cutting-edge home automation and security, EV-compatible covered car parks and equipped with a host of other world-class amenities. Needless to say, all our villas are 100% vastu compliant as well.



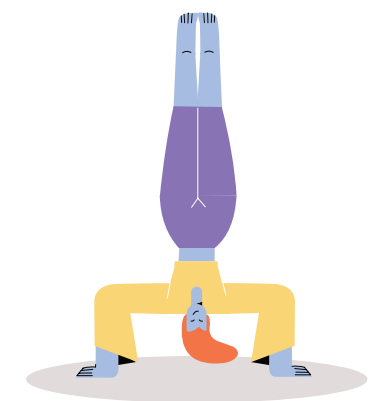


Standard 6,300-6,810 sft villas

A sanctuary called home

After meandering walkways, captivating greens, and endless indulgences, comes a sight even more breathtaking. Your villa.

Our standard villas are designed to pamper you with unrestrained luxury. Each villa is three-storied with 4 super-sized bedrooms, large landscaped decks, sit-outs and balconies, as well as a multipurpose room that can become whatever you want it to be.



Standard villa features and amenities

Bare necessities

- 100% vastu compliant
- Landscaped decks, sit-outs and balconies
- Elaborate planting in upper floors
- Multipurpose spaces that can be converted to a home gym or a private home theatre
- Rooftop lounge bar
- Landscaped open terraces
- Outdoor barbeque kitchen
- Ground floors with double height spaces
- Expansive French windows and doors
- Water bodies
- Boundary walls for each villa for privacy
- Bedrooms designed with provisions for walk-in closets
- Large bathrooms with private landscaped decks and bathtubs
- Covered parking for 3 car parks with provisions for EV charging points
- Air-conditioned kitchen and master bathroom





Palatial 10,809 sft villas

Beyond the ordinary

Our 10,809 sft villas are an ode to refined sophistication. Not to mention, an idyll of excess. 5 capacious bedrooms. 3 swanky floors. Spacious decks and balconies. A private plunge pool for both children and adults. Rooftop lounge bar. Airy bedrooms designed with provisions for walk-in closets. Exceptional baths with private landscaped decks and bathtubs. Covered parking for 4 cars with provision for EV charging. A courtyard with water bodies. The list is endless. The luxuries, limitless.



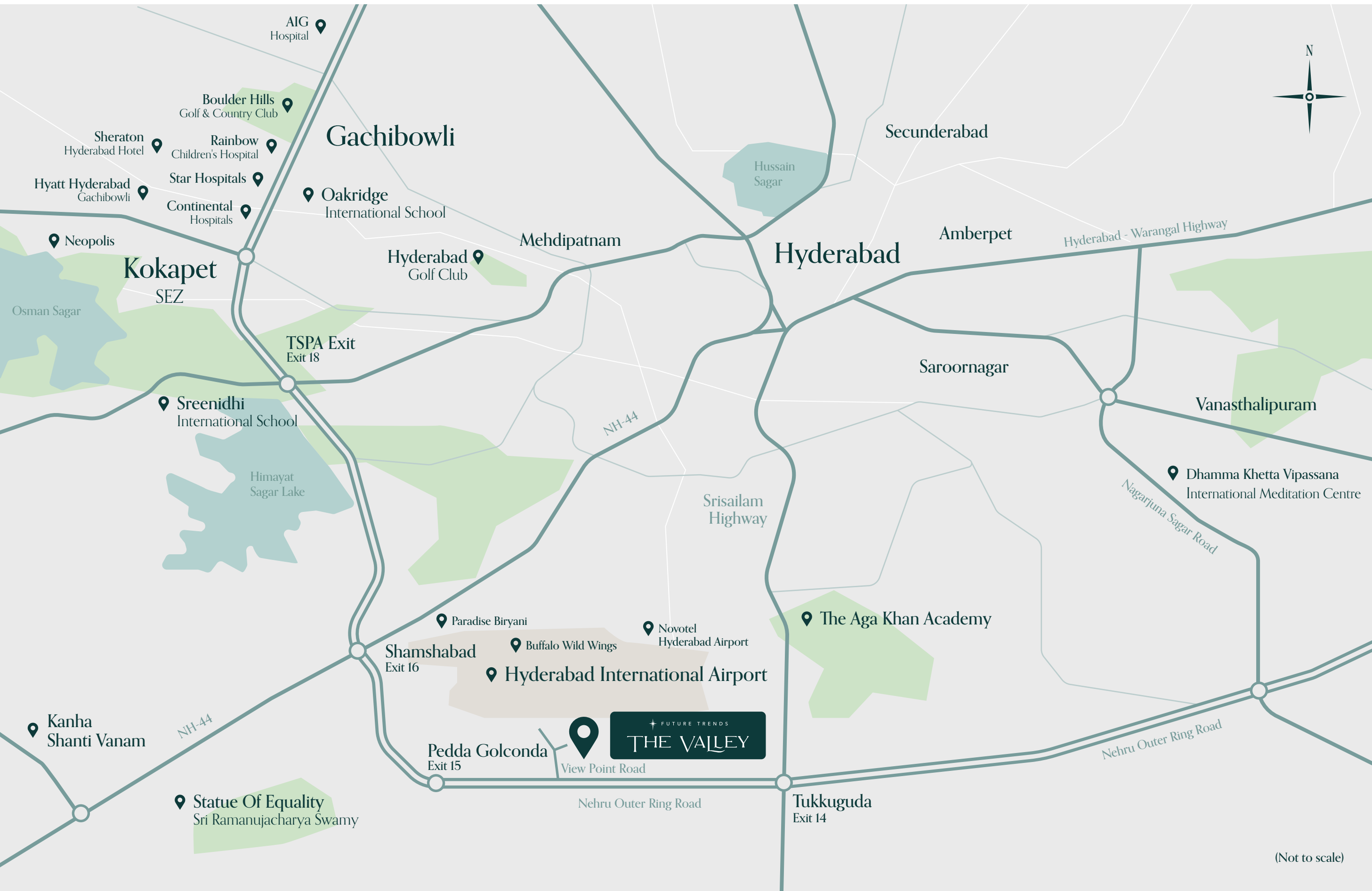
In addition to standard villa features

Extra perks

- Spacious courtyard with sunken seating and water bodies on the ground floor
- Large study
- Large backyard
- Private plunge pool for both children and adults
- Provisions for dry kitchens
- Two WCs in the master bathroom
- 100% vastu compliant
- Landscaped decks, sit-outs and balconies
- Elaborate planting in upper floors
- Multipurpose spaces that can be converted to a home gym or a private home theatre
- Rooftop lounge bar
- Landscaped open terraces
- Outdoor barbeque kitchen
- Ground floors with double height spaces
- Expansive French windows and doors
- Water bodies
- Boundary walls for each villa for privacy
- Bedrooms designed with provisions for walk-in closets
- Large bathrooms with private landscaped decks and bathtubs
- Covered parking for 4 car parks with provisions for EV charging points
- Air-conditioned kitchen and master bathroom





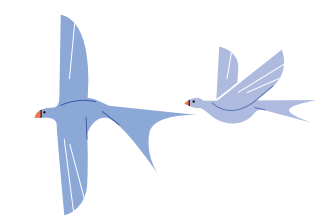


(Not to scale)

An address extraordinaire

A location like no other

Rarely is something so exclusive, and yet so accessible. The Valley is located in the heart of Hyderabad's most future-ready neighbourhood. Which means you're always a quick drive away from schools, restaurants, shopping centres, hospitals, offices, IT parks, GMR Aerocity, and of course, the swanky Hyderabad International Airport itself.



Scan to locate



A future-ready neighbourhood

Conveniently connected

Healthcare

You'll find a cluster of esteemed hospitals, such as Star Hospital, Rainbow Hospital, AIG Hospital, Care Hospital, Omega Hospital, and Continental Hospital, all within a convenient 20-30 minutes' drive.

Education

For those seeking world-class education, Aga Khan International School, Sreenidhi International School, Oakridge, and The Shri Ram Universal School are just 25 minutes away. The Indus school is about 30 minutes away.

Fine dining

Indulge in the culinary delights of fine dining restaurants like Paradise, Buffalo Wild Wings, and The Square. Or step out for an evening of luxury at the Sheraton Hotel, Hyatt Gachibowli, Novotel Airport, and Golconda Resorts.

Landmarks

Explore spiritual spots like the Statue of Equality (9 min), Kanha Shanti Vanam (37 min), and Vipassana International Meditation Centre (35 min). Golf enthusiasts can also conveniently access Boulder Hills Golf & Country Club (28 min), and the Hyderabad Golf Club (35 min).



GMR Aerocity

The Valley offers quick connectivity to GMR Aerocity and the Hyderabad airport via the ORR, Srisailem Highway, and the upcoming metro line that links Madhapur to the airport.

Business parks

Nearby, you'll find the Adibatla Aeronautical Hub, Hardware Park, E-City, and the upcoming Pharma City. The location is also close to the Aerospace & Precision Engineering SEZ and Adibatla. Renowned industry leaders like Tata Boeing Aerospace Ltd, Tata Lockheed Martin, and TCS have already set up bases here.

Tech & financial hub

Hyderabad Pharma City and Hardware Park are easily accessible. Additionally, Fab City and Chandan Valley IP Area, home to companies like Microsoft, Amazon, Kitex Garments, and Welspun, are a quick drive away. You'll also find yourself close to the Plastic Park in Tummalur, and the AMRBL Research and Development Centre. Truly an address for the future.





 FUTURE TRENDS

About the Group

The future of luxury

The brainchild of co-founders Ujwal Kotagiri and MSR Sandeep, The Valley represents our vision to redefine urban living. From the very beginning, our philosophy has been to create spaces that are uniquely imaginative and curiously inventive. By bringing together some of the most creative minds in architecture, design and development, The Valley is the first step on that journey. And the first step towards the future of luxury.

Disclaimer :

This brochure is conceptual in nature and by no means a legal offering. The developer reserves the right to change, delete or add any specification, amenity, or plan mentioned herein, with or without notice. All images shown here are indicative.

TS RERA No. : P02400007021